

WEKIVA PARKWAY CONSTRUCTION

Completing Central Florida's Beltway

QUICK FACTS



PROJECT: WEKIVA PARKWAY (STATE ROAD 429) SECTIONS 2A, 2B & 2C

To help complete Central Florida's beltway, the Central Florida Expressway Authority (CFX) is building its second part of the Wekiva Parkway (State Road 429) – Sections 2A, 2B and 2C. These sections total about five miles and will be located just north of the Kelly Park Road interchange between Round Lake Road, Mount Plymouth Road (County Road 435) and State Road 46.

Section 2B includes a multi-level interchange that will extend the expressway northwest from Ondich Road to the Lake County line. On the east side of the interchange the roadway will extend to just east of Plymouth Sorrento Road.

Section 2A will parallel Haas Road, extending east from the interchange to CR 435, where it will connect to the Florida Department of Transportation's Section 4A.

Section 2C extends the expressway from the Lake County-Orange County line north to a loop interchange at State Road 46 just east of Round Lake Road.

The Wekiva Parkway will feature all electronic tolling and enhanced aesthetics. Toll gantries will be located on Sections 2A and 2C as shown on the project map.

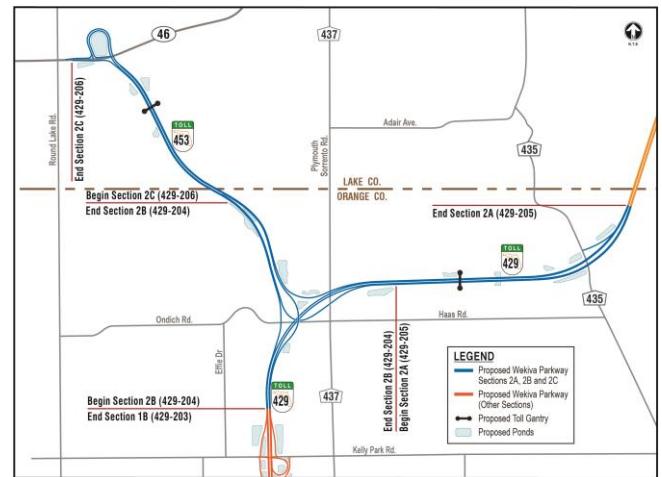
PROJECT LANE CLOSURES & FUTURE TRAFFIC

During construction, temporary lane, ramp and road closures, as well as detours, will be necessary. As always, CFX will take steps to minimize the impact of construction to motorists and adjacent communities.

There will be night and weekend work on this project. Travel notifications will be posted prior to all scheduled lane or roadway closures.

As many as 27,400 vehicles a day are expected to drive this stretch when it opens; more than 78,000 vehicles are expected to travel this portion of the parkway by 2033.

PROJECT MAP (SEE LARGER MAP ON BACK)



WORK ZONE SAFETY

For the safety of motorists and work crews, speed limits will be strictly enforced during construction. Speeding fines are doubled in work zones when workers are present. Drivers are reminded to change lanes for safety when they see Road Rangers assisting other motorists or flashing lights – it's Florida law.

Distracted driving is a major cause of traffic accidents. Even just two seconds of distraction time doubles the chances of an accident. Use your cell phone when stopped and never text while driving. Instead, "Designate a Texter." For details, go to: www.WhosYourDT.com.

PUBLIC INFORMATION

Phone: 407-694-5505

E-mail: info@wekivaparkway.com

Website: www.wekivaparkway.com

Follow us on Facebook and Twitter @WekivaPKWYInfo for current project information.

**QUICK
FACTS**

PROJECT START

Construction starts in January (2B), May (2C) & August (2A) of 2016

ESTIMATED COMPLETION

All three sections are scheduled to be open to traffic in January of 2018.

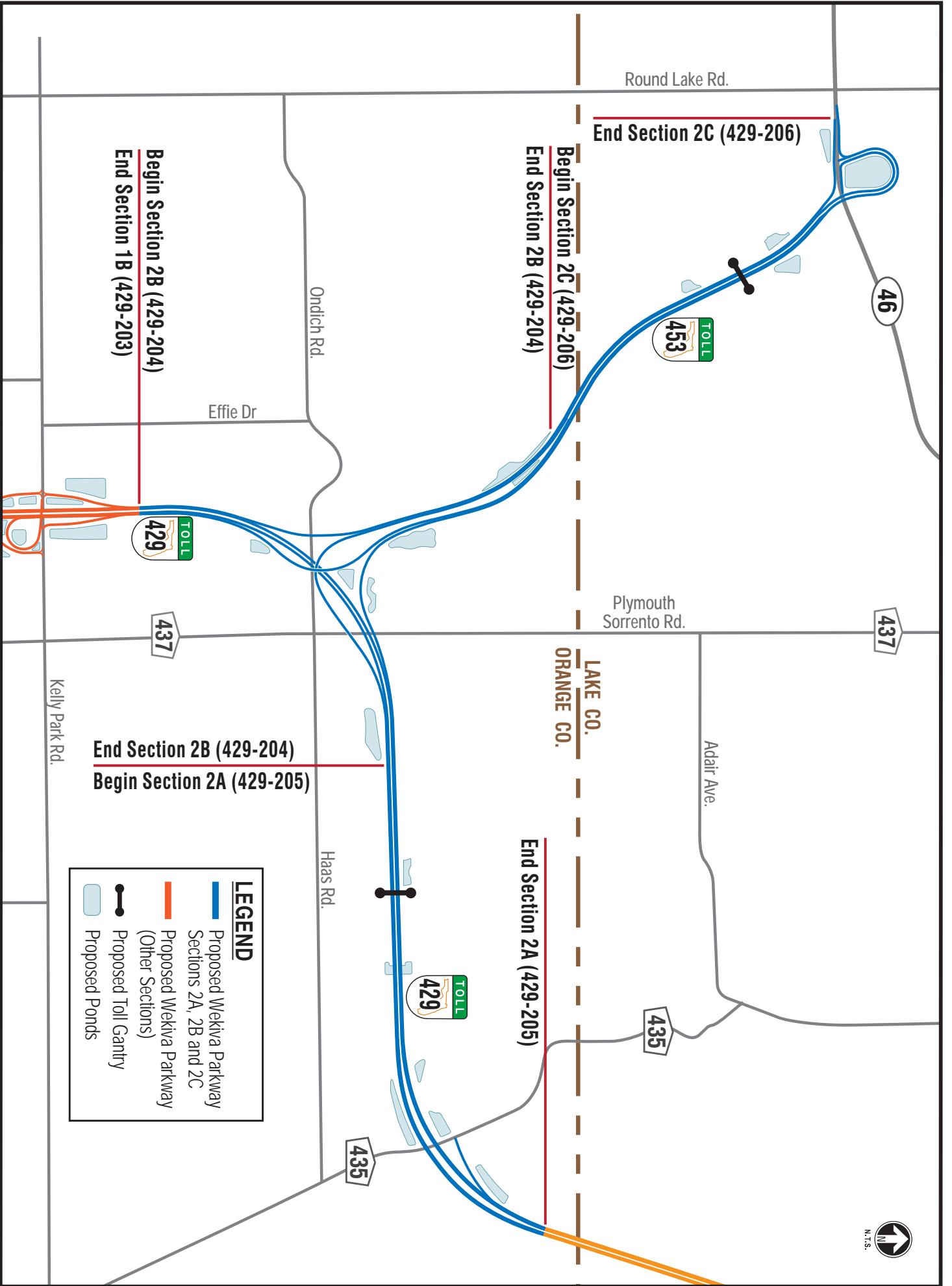
PROJECT COSTS

\$79.6 million (2B), \$49.5 million (2C) & \$38.6 million (2A) for construction

The regional Central Florida Expressway Authority is responsible for the planning, design, construction, operation, and maintenance of a 109-mile limited-access expressway system to serve the four county region. CFX's system includes SR 408 (Spessard L. Holland East-West Expressway), SR 528 (Martin Andersen Beachline Expressway), SR 417 (Central Florida GreeneWay), SR 429 (Daniel Webster Western Beltway), SR 414 (John Land Apopka Expressway) and State Road 451.

Central Florida Expressway Authority: 4974 ORL Tower Road, Orlando, Florida 32807
Phone: 407.690.5000 | Fax: 407.690.5011 | Email: construction@CFXWay.com

**CENTRAL
FLORIDA
EXPRESSWAY
AUTHORITY**



LEGEND

- Proposed Wekiva Parkway Sections 2A, 2B and 2C
- Proposed Wekiva Parkway (Other Sections)
- Proposed Toll Gantry
- Proposed Ponds

