

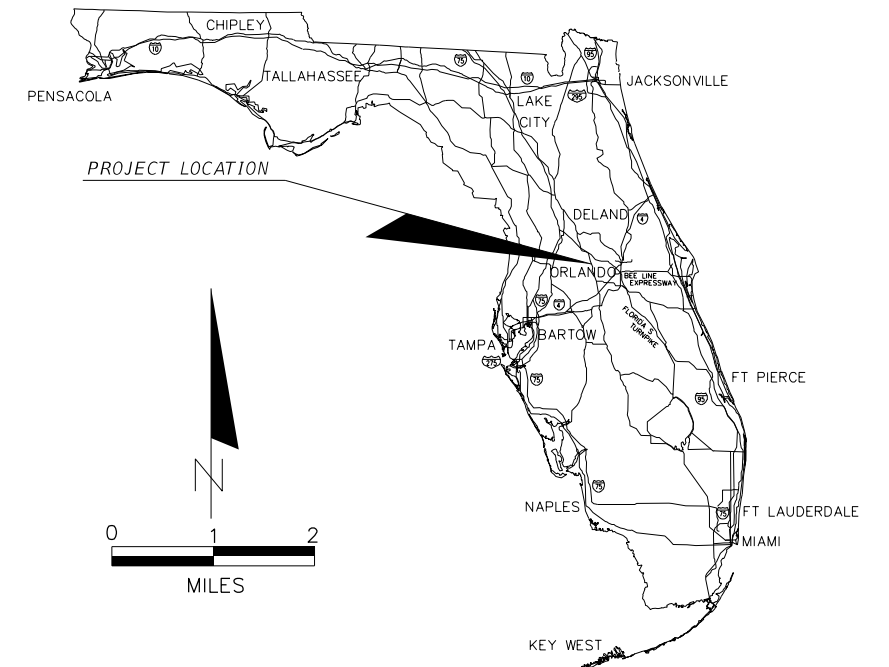
CENTRAL FLORIDA
EXPRESSWAY AUTHORITY

PLANS OF PROPOSED
SR 429 (WEKIVA PARKWAY)

ORANGE AND LAKE COUNTY

CFX PROJECT NUMBER – 429-20X

AESTHETICS PLANS



INDEX OF AESTHETICS PLANS

SHEET NO.	SHEET DESCRIPTION
AP-00	INDEX SHEET
AP-01 – AP-03	AESTHETICS GENERAL NOTES AND INFORMATION
AP-04	AESTHETICS FINISHING SCHEMATICS
AP-05	MATERIAL FINISHES SCHEDULE
AP-06	TRAFFIC RAILING AESTHETICS NOTES/SCHEMATICS
AP-07	LIGHT POLE AESTHETICS REQUIREMENTS
AP-08	MEDALLION AESTHETICS SCHEMATICS
AP-09	TOLL EQUIPMENT STRUCTURE AESTHETICS SCHEMATICS
AP-10	BRIDGE PIER SCHEMATICS – SINGLE COLUMN PIER
AP-11	BRIDGE PIER SCHEMATICS – MULTI-COLUMN PIER
AP-12 – AP-16	BRIDGE ELEVATIONS
AP-17	MISCELLANEOUS WALL SCHEMATICS
AP-18 – AP-20	PRECAST COLUMN SCHEMATICS

CENTRAL FLORIDA EXPRESSWAY
AUTHORITY MEMBERS

WELTON G. CADWELL	CHAIRMAN
S. SCOTT BOYD	VICE CHAIRMAN
BRENDA CAREY	SECRETARY/TREASURER
BUDDY DYER	EX-OFFICIO, CITY OF ORLANDO MAYOR
FRED HAWKINS, JR.	BOARD MEMBER
TERESA JACOBS	EX-OFFICIO, ORANGE COUNTY MAYOR
WALTER A. KETCHAM, JR.	BOARD MEMBER
JAY MADARA	BOARD MEMBER
SHAWN "MICHAEL" SCHEERINGA	BOARD MEMBER

PLANS PREPARED BY:

Dewberry
DEWBERRY ENGINEERS INC.
520 SOUTH MAGNOLIA AVENUE
ORLANDO, FL 32801
CERTIFICATE OF AUTHORIZATION 8794

NOTE: THE SCALE OF THESE PLANS MAY
HAVE CHANGED DUE TO REPRODUCTION.

KEY SHEET REVISIONS		
DATE	BY	DESCRIPTION

AESTHETICS PLANS
LANDSCAPE ARCHITECT
OF RECORD: DAVID W. LARSEN

R.L.A. NO.: 0001153

FISCAL YEAR	SHEET NO.
14	AP-00

CFX PROJECT MANAGER: GLENN M. PRESSIMONE, P.E.

GENERAL NOTES

1. AESTHETICS PLANS ARE DIAGRAMMATIC AND FOR ILLUSTRATIVE AND DESCRIPTIVE PURPOSES ONLY. REFER TO BRIDGE AND ROADWAY PLANS FOR PROJECT SPECIFIC DIMENSIONAL REQUIREMENTS AND DETAILS.
2. THE CONTRACTOR IS RESPONSIBLE FOR VERIFYING ALL DIMENSIONS AND ADJUSTING LAYOUT OF AESTHETIC COMPONENTS TO CONFORM TO BRIDGE AND WALL CONSTRUCTION PLANS DIMENSIONS AND REQUIREMENTS.
3. ALL MANUFACTURERS FINISHES, PATTERNS, AND COLORS ARE AS SHOWN, OR SHALL BE APPROVED BY THE AUTHORITY. REFER TO MATERIALS AND FINISHES SCHEDULE FOR MORE INFORMATION.
4. THE CONTRACTOR SHALL PROVIDE SUBMITTALS AND SAMPLES FOR ALL NECESSARY MATERIALS, COMPONENTS, AND ACCESSORIES, INCLUDING COLOR, FINISH, ETC. FOR REVIEW AND APPROVAL BY THE AUTHORITY.
5. ALL COLORS ARE FEDERAL STANDARD 595B (JULY 1994) COLORS OR SHERWIN WILLIAMS (SW) COLORS, UNLESS OTHERWISE NOTED. REFER TO COLOR SCHEDULE FOR MORE INFORMATION.

ARCHITECTURAL PRECAST NOTES (ALL PRECAST EXCLUDING MSE WALL PANELS AND COPINGS)

1. ALL JOINT SEALERS SHALL CONFORM TO THE SPECIFICATIONS AND MATCH SELECTED COLOR THEME.
2. AFTER PROJECT AWARD, CONTRACTOR SHALL FABRICATE UP TO SIX (6) SAMPLES (5' X 5') OF APPROPRIATE THICKNESS TO ILLUSTRATE CONFORMANCE WITH QUALITY, FINISH, AND SURFACE TEXTURE OF MOCK-UP SAMPLE. SAMPLE(S) SHALL BE REVIEWED AND APPROVED BY THE AUTHORITY PRIOR TO CONSTRUCTION.
3. CAULK ALL HORIZONTAL JOINTS AFTER COATING APPLICATION. ALL CAULKS AND SEALANTS SHALL MATCH THE COLOR OF THE SURROUNDING MATERIAL AS CLOSELY AS POSSIBLE, AS DETERMINED BY THE AUTHORITY.
4. PROVIDE PRECAST SAMPLES ON CONSTRUCTION SITE AT CEI TRAILER OR AS DIRECTED BY CEI.
5. ONCE AUTHORITY APPROVAL IS OBTAINED, THE CONTRACTOR SHALL REMOVE AND DISPOSE OF SAMPLE(S) AT NO COST TO THE AUTHORITY.
6. THE COST OF ALL MATERIALS, LABOR, EQUIPMENT AND INCIDENTALS TO FURNISH AND INSTALL THE ARCHITECTURAL PRECAST SAMPLES SHALL BE INCIDENTAL TO THE CONTRACT UNIT PRICE FOR THE MSE PAY ITEM.
7. THE COST OF ALL MATERIALS, LABOR, EQUIPMENT AND INCIDENTALS TO FURNISH, INSTALL, COAT, AND CAULK THE ARCHITECTURAL PRECAST SHALL BE INCIDENTAL TO THE TO THE CONTRACT UNIT PRICE FOR THE ARCHITECTURAL PRECAST PAY ITEM.

CAST STONE MEDALLION NOTES

1. CAST STONE CUSTOM LOGO MEDALLIONS SHALL BE:
 PINEAPPLE GROVE DESIGNS:
 SCULPTSTONE MEDALLIONS
 CUSTOM PANELS - TOLL 429 SHIELD / CUSTOM LOGO
 MEDALLION SIZES
 CUSTOM MOLD A - 36" x 36" TOLL 429 SHIELD / CUSTOM LOGO
 CUSTOM MOLD B - 72" x 72" TOLL 429 SHIELD / CUSTOM LOGO
 COLOR - ALLUVIAL SAND

 ADDRESS:
 151 COMMERCE ROAD
 BOYNTON BEACH, FL 33426
 PHONE: (800) 771-4595
 PHONE: (561) 588-8920
 FAX: (561) 586-0845
 HTTP://WWW.PINEAPPLEGROVE.COM
2. CAST STONE CUSTOM LOGO MEDALLIONS ARE TO BE FURNISHED AND INSTALLED BY THE CONTRACTOR. REFER TO MATERIALS AND FINISHES SCHEDULE AND PLANS FOR MORE INFORMATION ABOUT SIZE, COLOR, AND LOCATION ETC.
3. IF MEDALLIONS MUST BE STORED UPON DELIVERY, THE CONTRACTOR SHALL BE RESPONSIBLE FOR ENSURING THAT ALL MATERIALS ARE SECURE AND FULLY PROTECTED FROM THE ELEMENTS.
4. INSTALL MEDALLIONS PER MANUFACTURER SPECIFICATIONS.
5. REFER TO SPECIAL PROVISIONS FOR ADDITIONAL INFORMATION.
6. THE COST OF EACH CUSTOM MOLD(S) FOR CAST STONE LOGO MEDALLIONS SHALL BE INCIDENTAL TO THE ARCHITECTURAL PRECAST PAY ITEM.
7. THE COST OF ALL MATERIALS, LABOR, EQUIPMENT AND INCIDENTALS TO FURNISH AND INSTALL THE CAST STONE LOGO MEDALLIONS SHALL BE INCIDENTAL TO THE CONTRACT UNIT PRICE FOR THE ARCHITECTURAL PRECAST PAY ITEM.

SIDEWALK NOTES

1. SIDEWALKS UNDER BRIDGES SHALL BE COLORED WITH LITHOCHROME COLOR HARDENER #A-53 ARIZONA TAN OR AUTHORITY APPROVED EQUAL. COLOR HARDENER SHALL BE PER MANUFACTURER'S RECOMMENDATIONS. SUBMIT TWO SAMPLE PANELS FOR REVIEW AND AUTHORITY APPROVAL. PROVIDE JOINT SEALER TO MATCH HARDENER. SAMPLES TO BE LOCATED ON PROJECT SITE AT A LOCATION DETERMINED BY THE AUTHORITY.
2. ONCE AUTHORITY APPROVAL IS OBTAINED, THE CONTRACTOR SHALL REMOVE AND DISPOSE OF SAMPLE(S) AT NO COST TO THE AUTHORITY.
3. THE COST OF ALL MATERIALS, LABOR, EQUIPMENT AND INCIDENTALS TO FURNISH AND INSTALL THE COLORED SIDEWALKS SHALL BE INCIDENTAL TO THE CONTRACT UNIT PRICE FOR THE SIDEWALK PAY ITEM.

BEAM GRATING NOTES

1. GRATING GRIDS SHALL NOT PASS A 2" SPHERE AND A 1" MAXIMUM GAP SHALL BE MAINTAINED BETWEEN THE GRATING AND THE BRIDGE STRUCTURE. GRATING SHALL BE SECURELY FASTENED AND BRACED AS NECESSARY IN ORDER TO RESIST WIND LOAD. BRACING SHALL BE BLACK IN COLOR. REFER TO STRUCTURE PLANS FOR ADDITIONAL REQUIREMENTS.

MSE WALL/FORMLINER NOTES

1. ALL WALLS SHALL USE 5' X 5' PANELS ONLY.
2. RADIUS FOR CURVED WALLS SHALL BE AS SHOWN IN PLANS (MIN. 100' RADIUS).
3. CONTRACTORS ARE REQUIRED TO VIEW AUTHORITY APPROVED FORMLINER MOCK-UP PANEL PRIOR TO BIDDING. ALL CONSTRUCTED FEATURES SHALL MATCH AUTHORITY APPROVED MOCK-UP PANEL. FOR ACCESS TO THE AUTHORITY APPROVED FORMLINER MOCK-UP PANEL, CONTACT:
 PHILLIP MORAW/RALPH DELEON
 SEMINOLE PRECAST MANUFACTURING, INC.
 PHONE: (386) 668-7745
4. AFTER PROJECT AWARD, CONTRACTOR SHALL FABRICATE UP TO SIX (6) SAMPLES (5' X 5') OF APPROPRIATE THICKNESS TO ILLUSTRATE CONFORMANCE WITH QUALITY, FINISH, AND SURFACE TEXTURE OF MOCK-UP SAMPLE. SAMPLE(S) SHALL BE REVIEWED AND APPROVED BY THE AUTHORITY PRIOR TO CONSTRUCTION.
5. MOCK-UP SAMPLES SHALL BE DELIVERED TO PROJECT SITE AT CEI CONSTRUCTION TRAILER OR AS DIRECTED BY CEI.
6. ONCE AUTHORITY APPROVAL IS OBTAINED, THE CONTRACTOR SHALL REMOVE AND DISPOSE OF SAMPLE(S) AT NO COST TO THE AUTHORITY.
7. ALL FORMLINED CONCRETE SHALL BE COLORED BY SPECIAL STAINING PROCESS. REFER TO SPECIAL PROVISION - APPLYING COLOR STAIN SYSTEM NOTES FOR MORE INFORMATION.
8. REFER TO WALL COLOR SCHEDULE FOR SELECTED COLOR SCHEME.
9. REFER TO SPECIAL PROVISIONS FOR MORE INFORMATION REGARDING REQUIREMENTS, SUBMITTALS, MATERIALS, SEQUENCING, CARE AND PLACEMENT OF ELASTOMERIC FORMLINERS.
10. THE COST OF ALL MATERIALS, LABOR, EQUIPMENT AND INCIDENTALS TO FURNISH AND INSTALL THE FORMLINED CONCRETE SAMPLES SHALL BE INCIDENTAL TO THE CONTRACT UNIT PRICE FOR THE MSE WALL PAY ITEM.
11. THE COST OF ALL MATERIALS, LABOR, EQUIPMENT AND INCIDENTALS TO FURNISH AND INSTALL THE FORMLINED CONCRETE COLOR STAIN COATING SHALL BE INCIDENTAL TO THE CONTRACT UNIT PRICE FOR THE ELEMENT BEING COATED.



FORMLINER MOCK-UP PANEL

APPLYING COLOR STAIN SYSTEM

1. NO COLOR STAINING SHALL BE APPLIED TO A SIMULATED STONE SURFACE/FORMLINED CONCRETE UNTIL 30 DAYS AFTER PRECASTING.
2. CLEAN SURFACE PRIOR TO APPLICATION OF STAIN MATERIALS TO ASSURE THAT SURFACE IS FREE OF LATENCY, DIRT, DUST, GREASE, EFFLORESCENCE, PAINT, OR OTHER FOREIGN MATERIAL. FOLLOW MANUFACTURER'S INSTRUCTIONS FOR SURFACE PREPARATION. DO NOT SANDBLAST.
3. REFER TO SPECIAL PROVISIONS FOR MORE INFORMATION REGARDING REQUIREMENTS, SUBMITTALS, MATERIALS, SEQUENCING, AND OTHER CONCRETE STAINING REQUIREMENTS.
4. THE COST OF ALL MATERIALS, LABOR, EQUIPMENT AND INCIDENTALS TO PREPARE, CLEAN AND COAT THE WALL USING THE SHERWIN WILLIAMS/H+C COLOR STAIN COATING SYSTEM SHALL BE INCIDENTAL TO THE CONTRACT UNIT PRICE FOR THE ELEMENT BEING COATED.

SIMULATED STONE FORMLINER

1. REFER TO THE SPECIAL PROVISIONS FOR MORE INFORMATION REGARDING REQUIREMENTS, SUBMITTALS, MATERIALS, SEQUENCING, AND CONSTRUCTION OF SIMULATED STONE FORMLINERS.
2. FORMLINERS SHALL BE MANUFACTURED BY:
 CUSTOMROCK FORMLINERS
 202 WEST 7TH STREET
 ST. PAUL, MINNESOTA 55116
 PHONE: (651) 699-1345
 FAX: (651) 699-1830
 E-MAIL: INFO@CUSTOMROCK.COM
3. THE COST OF SPECIFIED FORMLINERS SHALL BE INCIDENTAL TO THE CONTRACT UNIT PRICE FOR THE ELEMENT REQUIRING THE FORMLINER.

REVISIONS						GEORGE C. NOON, P.E. P.E. LICENSE NUMBER 57854 DEWBERRY BOWYER-SINGLETON 520 SOUTH MAGNOLIA AVENUE ORLANDO, FL 32801 CERTIFICATE OF AUTHORIZATION 8794	DRAWN BY:	CENTRAL FLORIDA EXPRESSWAY AUTHORITY			SHEET TITLE:	REF. DWG. NO.	
DATE	BY	DESCRIPTION	DATE	BY	DESCRIPTION		CHECKED BY:	ROAD NO.	COUNTY	FINANCIAL PROJECT ID	AESTHETICS GENERAL NOTES AND INFORMATION	SHEET NO.	
							DESIGNED BY:	SR 429	ORANGE	429-203			PROJECT NAME:
							CHECKED BY:						

MISCELLANEOUS ELEMENTS AND SIGNS

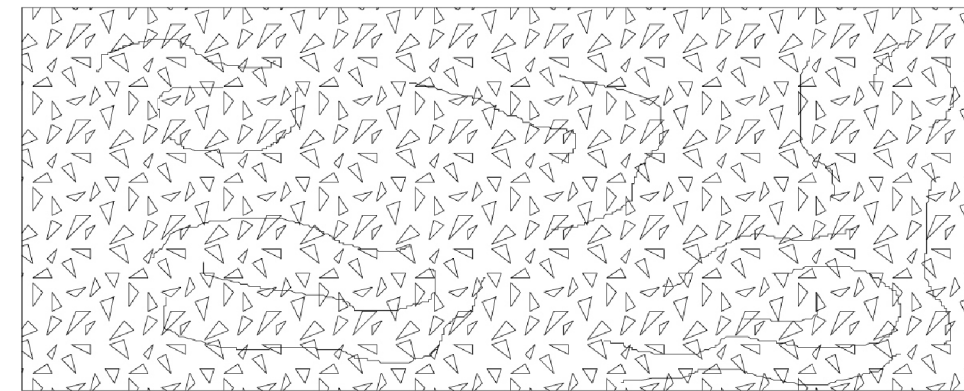
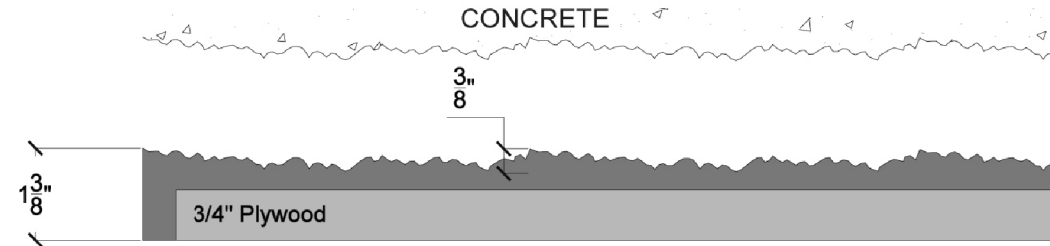
- ALL ITS CABINETS, LIGHT POLES AND FIXTURES, TOLL GANTRY TRUSSES, BEAM GRATING, AND TOLL GANTRY BUILDING ROOFS SHALL BE A SEMI-GLOSS 'THERMOSET POWDER COAT PAINT FINISH' FEDERAL COLOR NUMBER #20062 - DARK BRONZE. SUBMIT SAMPLE FOR AUTHORITY APPROVAL PRIOR TO FABRICATION.
- PROPOSED GROUND MOUNTED SINGLE AND MULTI-POST SIGN ASSEMBLIES SHALL BE PAINTED. ALL PROPOSED POSTS, ATTACHMENT HARDWARE AND BACK OF SIGN PANELS SHALL BE PAINTED BLACK BY EACH COMPONENT FABRICATOR. THE BLACK PAINT SHALL BE A SEMI-GLOSS 'THERMOSET POWDER COAT PAINT FINISH', FEDERAL COLOR NUMBER 27038. THE BACK OF PANEL STICKER CONTAINING THE OWNER AND FABRICATION INFORMATION SHALL BE APPLIED AFTER PAINTING PROCESS IS COMPLETED. SAMPLES FROM EACH COMPONENT FABRICATOR SHALL BE SUBMITTED FOR APPROVAL BY THE AUTHORITY PRIOR TO FABRICATION.
- THE COST OF ALL MATERIALS, LABOR, EQUIPMENT AND INCIDENTALS TO PROVIDE 'THERMOSET POWDER COAT PAINT FINISH' SHALL BE INCIDENTAL TO THE CONTRACT UNIT PRICE FOR THE ELEMENT BEING COATED.

GENERAL COATING AND STAINING NOTES

- CONCRETE FINISH SHALL BE IN ACCORDANCE WITH THE SPECIFICATIONS AND SPECIAL PROVISIONS, UNLESS OTHERWISE NOTED.
- ALL EXPOSED SURFACES SHALL RECEIVE TREATMENT AS SHOWN IN THE PLANS. SURFACES SHALL BE CLEANED IN ACCORDANCE WITH THE SPECIFICATIONS PRIOR TO RECEIVING TREATMENT. THE COST FOR CLEANING AND COATING SURFACES SHALL BE INCIDENTAL TO THE CONTRACT UNIT PRICE OF THE ELEMENT BEING COATED.
- CLASS V FINISH SHALL BE SHERWIN WILLIAMS TEXTURE COATING B97 SERIES.
- ALL CLASS V SURFACES SHALL RECEIVE TWO MATCHING PIGMENTED LAYERS OF COATINGS. THE TWO PIGMENTED LAYERS SHALL CONSIST OF THE FOLLOWING:
 - FIRST PIGMENTED COATING - SHERWIN WILLIAMS B97 SERIES CLASS V COATING
 - SECOND MATCHING PIGMENTED COATING - SHERWIN WILLIAMS DTM ACYLIC B66-200 SERIES
- THE APPLIED COATING THICKNESS AND CURE TIME SHALL BE AS RECOMMENDED BY THE MANUFACTURER.
- THE CLASS V FINISH COATING SHALL CONSIST OF LIGHT SANDBLAST TEXTURE, UNLESS OTHERWISE NOTED.
- ALL SIMULATED STONE SURFACES/FORMLINED CONCRETE (MSE PANELS, ARCHITECTURAL PRECAST PANELS, CAST IN PLACE WALLS) SHALL BE COLORED BY A SPECIAL STAINING PROCESS. REFER TO SPECIAL PROVISIONS AND STAINING NOTES FOR REQUIREMENTS RELATED TO STAINING.
- STAIN SHALL BE SHERWIN WILLIAMS/H+C AS DISTRIBUTED BY SHERWIN WILLIAMS.
- CONTRACTOR SHALL SCHEDULE A PRE-COATING MEETING WITH THE AUTHORITY TWO WEEKS PRIOR TO COATING. CONTRACTOR SHALL PREPARE AN EXHIBIT TO SHOW THEIR PLAN FOR PAINTING/STAINING THE VARIOUS COMPONENTS WITH COLORS, FINISHES, AND MATERIALS CLEARLY DEFINED.
- THE COST OF ALL MATERIALS, LABOR, EQUIPMENT AND INCIDENTALS TO PREPARE, CLEAN AND COAT USING THE SHERWIN WILLIAMS TEXTURE COATING SYSTEM AND SPECIAL COLOR STAIN PROCESS SHALL BE INCIDENTAL TO THE CONTRACT UNIT PRICE FOR THE ELEMENT BEING COATED.

**Pattern #T304
Fractured Granite**

customrock
FORMLINER



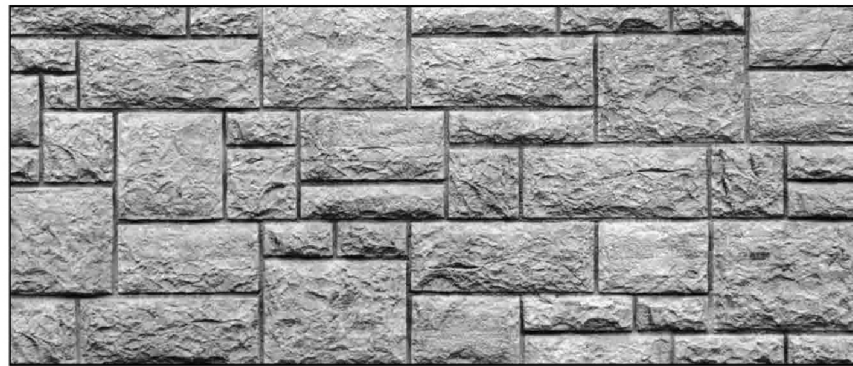
REVISIONS						GEORGE C. NOON, P.E. P.E. LICENSE NUMBER 57854 DEWBERRY BOWYER-SINGLETON 520 SOUTH MAGNOLIA AVENUE ORLANDO, FL 32801 CERTIFICATE OF AUTHORIZATION 8794	DRAWN BY:	CENTRAL FLORIDA EXPRESSWAY AUTHORITY			SHEET TITLE:	REF. DWG. NO.
DATE	BY	DESCRIPTION	DATE	BY	DESCRIPTION		CHECKED BY:	ROAD NO.	COUNTY	FINANCIAL PROJECT ID	AESTHETICS GENERAL NOTES AND INFORMATION	
							DESIGNED BY:				PROJECT NAME:	
							CHECKED BY:	SR 429	ORANGE	429-203	SR 429 (WEKIVA PARKWAY)	SHEET NO. AP-02

customrock

FORMLINER

Pattern #1501-R2 Large Sandstone Ashlar

Elastomeric/Urethane Formliner



Specifications:

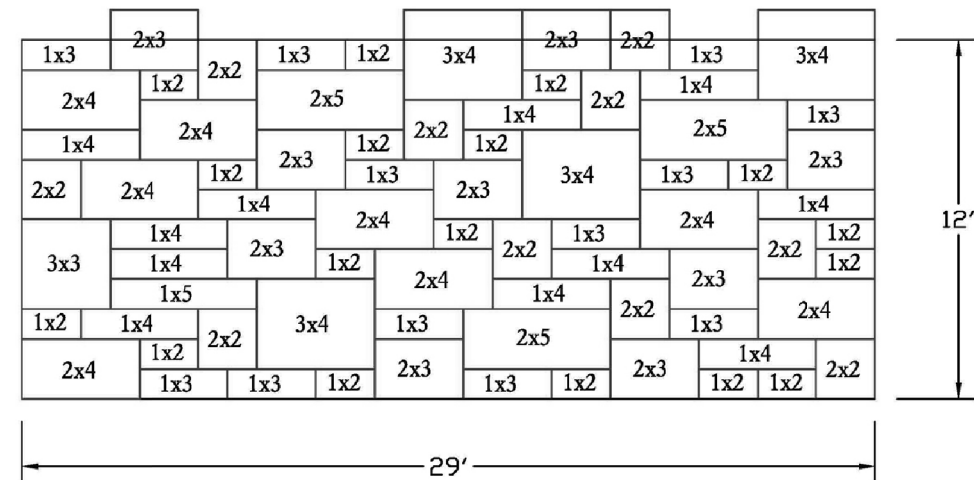
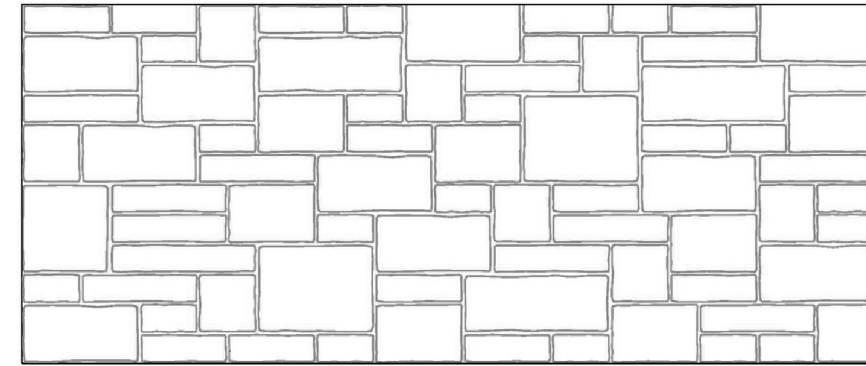
Maximum relief	2"
Average relief	1 5/8"
Liner thickness	3"
<small>Includes internal plywood backing</small>	
Stone size	12" - 60"

Stone sizes approximate

customrock

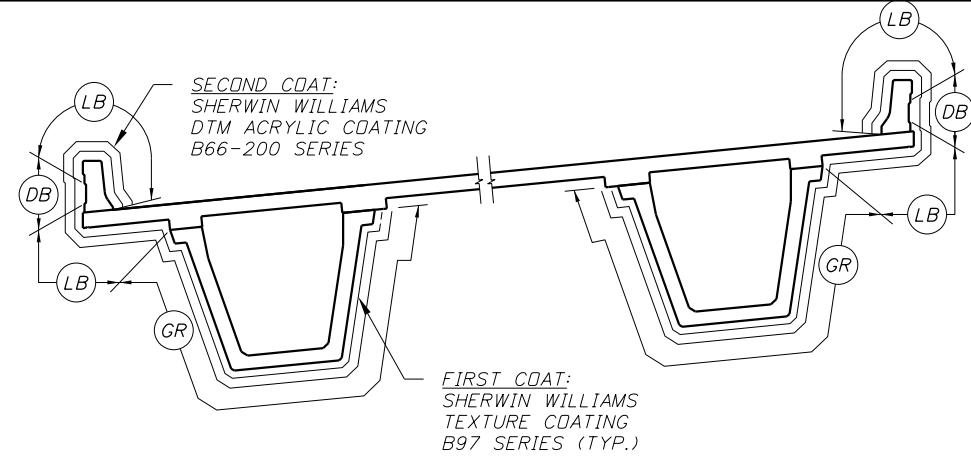
FORMLINER

Pattern #1501-R2 Large Sandstone Ashlar

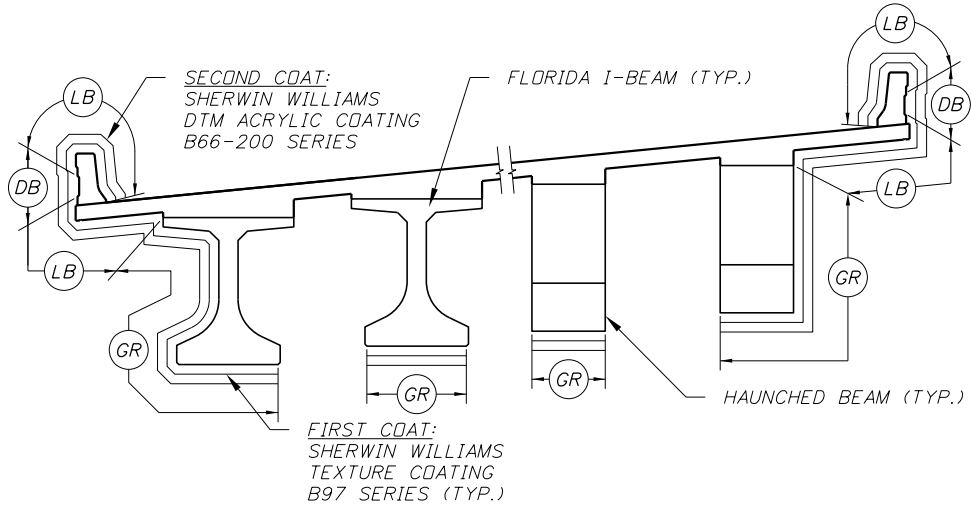


Sample Layout

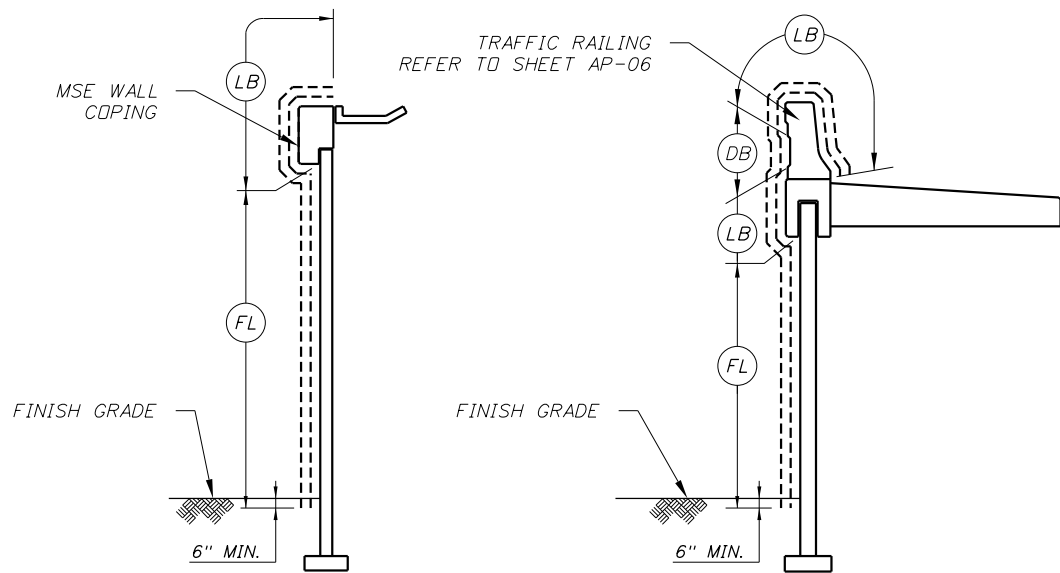
REVISIONS						GEORGE C. NOON, P.E. P.E. LICENSE NUMBER 57854 DEWBERRY BOWYER-SINGLETON 520 SOUTH MAGNOLIA AVENUE ORLANDO, FL 32801 CERTIFICATE OF AUTHORIZATION 8794	DRAWN BY:	CENTRAL FLORIDA EXPRESSWAY AUTHORITY			SHEET TITLE:		REF. DWG. NO.
DATE	BY	DESCRIPTION	DATE	BY	DESCRIPTION		CHECKED BY:	ROAD NO.	COUNTY	FINANCIAL PROJECT ID	AESTHETICS GENERAL NOTES AND INFORMATION		
							DESIGNED BY:	SR 429	ORANGE	429-203	SR 429 (WEKIVA PARKWAY)		SHEET NO.
							CHECKED BY:						AP-03



SURFACE FINISH SCHEMATICS - U-BEAM BRIDGE

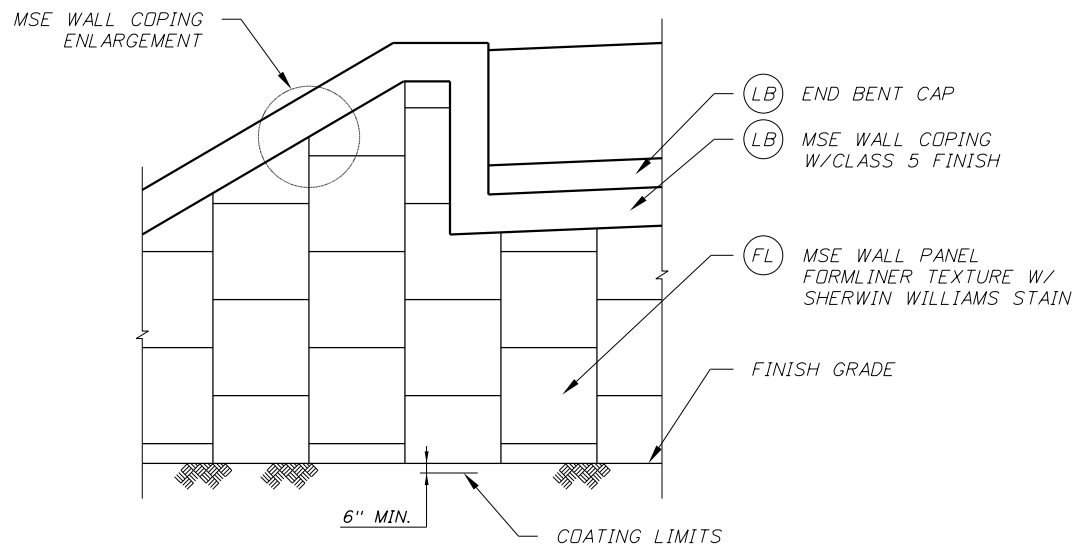


**SURFACE FINISH SCHEMATICS - FLORIDA I-BEAM/
HAUNCHED BEAM BRIDGE**

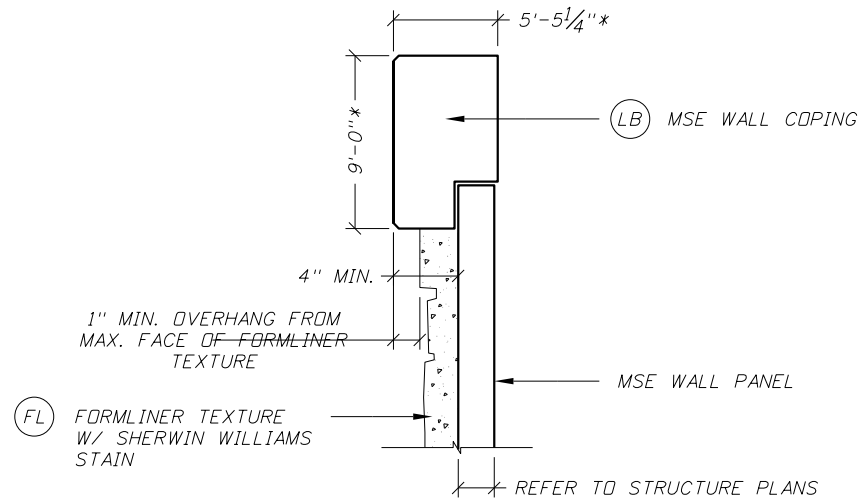


**MSE WALL & COPING
SECTION AT BRIDGE**

**MSE WALL SECTION
WITH CRASH BARRIER**

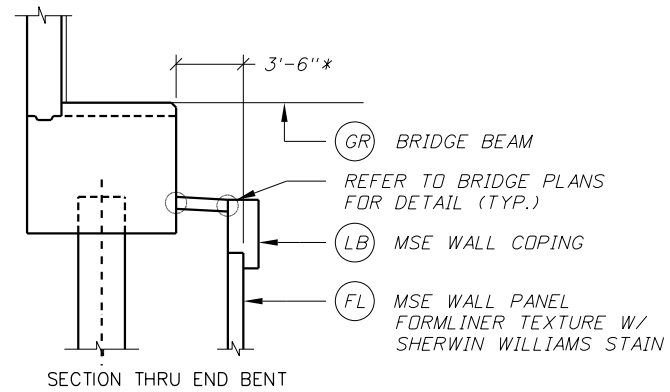


END BENTS & MSE WALLS



MSE WALL COPING ENLARGEMENT

NOTE: ** REFER TO BRIDGE/STRUCTURE PLANS FOR SPECIFIC DIMENSIONS.



CONCRETE SLOPE PAVEMENT ENLARGEMENT

** REFER TO BRIDGE/STRUCTURE PLANS FOR SPECIFIC DIMENSIONS.

COATING NOTES

- SURFACES SHALL BE CLEANED IN ACCORDANCE WITH SPECIFICATIONS PRIOR TO TREATMENT.
- AFTER SURFACE PREPARATION OF AND BEFORE COATING APPLICATION TO CONCRETE SURFACES, TEST FOR PRESENCE OF CAPILLARY MOISTURE USING ASTM D 4263 OR OTHER METHOD APPROVED BY THE AUTHORITY.
- ALL EXPOSED SURFACES SHALL RECEIVE TREATMENT AS SHOWN IN THE PLANS.
- THE CLASS V COATING SHALL BE SHERWIN WILLIAMS TEXTURE COATING B97 SERIES AND SHALL BE APPLIED IN ACCORDANCE WITH SPECIFICATION SECTION 400-15.2.6 TO THE PORTIONS OF THE ELEMENTS SHOWN HEREIN.
- ALL CLASS V SURFACES SHALL RECEIVE TWO (2) MATCHING PIGMENTED LAYERS OF SHERWIN WILLIAMS COATING. THE TWO PIGMENTED COATING LAYERS SHALL CONSIST OF THE FOLLOWING:
 - FIRST PIGMENTED COATING - SHERWIN WILLIAMS B97 SERIES CLASS V COATING
 - SECOND MATCHING PIGMENTED COATING - SHERWIN WILLIAMS DTM ACRYLIC B66-200 SERIES
- THE APPLIED COATING THICKNESS AND CURE TIME SHALL BE AS RECOMMENDED BY THE MANUFACTURER.
- APPLIED FINISH COLOR COATING FOR ALL CONCRETE ELEMENTS SHALL BE IN ACCORDANCE WITH SPECIFICATION SECTION 400-15.2.6 OR AS SPECIFIED HEREIN.
- THE CLASS V FINISH COATING SHALL CONSIST OF A LIGHT SANDBLAST TEXTURE IN ACCORDANCE WITH THE SPECIFICATIONS UNLESS OTHERWISE NOTED.
- THE COST OF ALL MATERIALS, LABOR, EQUIPMENT, AND INCIDENTALS NECESSARY TO PREPARE, CLEAN AND APPLY FINISH COATINGS TO ALL REQUIRED ELEMENTS SHALL BE INCIDENTAL TO THE CONTRACT UNIT PRICE FOR THE ELEMENT BEING COATED.

SHERWIN WILLIAMS COATING SCHEDULE		
LOCATIONS: CAST-IN-PLACE CONCRETE, ARCHITECTURAL PRECAST PANELS, WALL COPING, SLOPE PAVEMENT, TRAFFIC RAILINGS, BRIDGE BEAMS, TOLL GANTRY TRUSSES, LIGHT POLES		
KEY	COLOR NAME	ID #
LB	LIGHT BROWN	FEDERAL COLOR #33690
DB	DARK BROWN	FEDERAL COLOR #33446
GR	DARK GREEN	FEDERAL COLOR #34227
BR	DARK BRONZE	FEDERAL COLOR #20062

FORMLINER TEXTURE COLOR SCHEDULE	
LOCATIONS: CAST-IN-PLACE CONCRETE, ARCHITECTURAL PRECAST PANELS, WALL PANELS	
COLOR NAME	ID #
LIGHT BEIGE	FEDERAL COLOR #33510 BASE COAT ENTIRE SURFACE
ROADSIDE	SW-2195 RATIO: 50-60%
STONE CUTTER	SW-2124 RATIO: 10-20%
SPANISH MOSS	SW-2070 RATIO: 100% (WASH COAT)

REVISIONS					
DATE	BY	DESCRIPTION	DATE	BY	DESCRIPTION

GEORGE C. NOON, P.E.
P.E. LICENSE NUMBER 57854
DEWBERRY | BOWYER-SINGLETON
520 SOUTH MAGNOLIA AVENUE
ORLANDO, FL 32801
CERTIFICATE OF AUTHORIZATION 8794

DRAWN BY:	CENTRAL FLORIDA EXPRESSWAY AUTHORITY		
CHECKED BY:	ROAD NO.	COUNTY	FINANCIAL PROJECT ID
DESIGNED BY:	SR 429	ORANGE	429-203
CHECKED BY:			

SHEET TITLE:	AESTHETICS FINISHING SCHEMATICS		REF. DWG. NO.
PROJECT NAME:	SR 429 (WEKIVA PARKWAY)		SHEET NO.
			AP-04

MATERIAL FINISHES SCHEDULE

KEY	DESCRIPTION	MANUFACTURER	PATTERN/FINISH	COLOR	SPECIFICATIONS
(A1) (A2)	CAST-IN-PLACE CONCRETE	ON-SITE CONTRACTOR	SHERWIN WILLIAMS COATING	A1: LIGHT BROWN (FEDERAL ID #33690) A2: DARK BROWN (FEDERAL ID #33446)	REFER TO GENERAL NOTES, SHEETS AP-01/AP-02
(B)	CAST-IN-PLACE FORMLINER	CUSTOMROCK	CUSTOMROCK #1501-R2 2" MAX. RELIEF	REFER TO FORMLINER COLOR SCHEDULE	REFER TO MSE WALL/FORMLINER NOTES, SHEETS AP-01/AP-02
(C1) (C2)	ARCHITECTURAL PRECAST PANEL	TBD	SHERWIN WILLIAMS COATING	C1: LIGHT BROWN (FEDERAL ID #33690) C2: DARK BROWN (FEDERAL ID #33446)	REFER TO ARCHITECTURAL PRECAST NOTES, SHEETS AP-01/AP-02
(D1) (D2)	ARCHITECTURAL PRECAST FORMLINER	TBD	D1: CUSTOMROCK #1501-R2, 2" MAX. RELIEF D2: CUSTOMROCK #T304, 3/8" MAX. RELIEF	D1: REFER TO FORMLINER COLOR SCHEDULE D2: DARK BROWN (FEDERAL ID #33446)	REFER TO MSE WALL/FORMLINER NOTES, SHEETS AP-01/AP-02
(E)	CUSTOM LOGO MEDALLION (CAST STONE)	PINEAPPLE GROVE DESIGNS	SCULPTSTONE MEDALLION, 3'-0" x 3'-0" x 2" THICK AND 6'-0" x 6'-0" x 3" THICK CUSTOM LOGO TO BE PROVIDED	ALLUVIAL SAND	REFER TO CAST STONE MEDALLION NOTES, SHEETS AP-01/AP-02, AND SPECIAL PROVISIONS
(F)	MECHANICALLY STABILIZED EARTH (MSE) WALL PANEL	TBD	CUSTOMROCK #1501-R2 2" MAX. RELIEF	REFER TO FORMLINER COLOR SCHEDULE	REFER TO MSE WALL/FORMLINER NOTES, SHEETS AP-01/AP-02
(G)	MECHANICALLY STABILIZED EARTH (MSE) COPING	TBD	SHERWIN WILLIAMS COATING	LIGHT BROWN FEDERAL ID #33690	REFER TO GENERAL NOTES, SHEETS AP-01/AP-02
(H1) (H2)	CHAIN LINK FENCE	TBD	VINYL COATED	BLACK	H1: STRAIGHT, H2: CURVED TOP; PER FDOT STANDARDS REFER TO ROADWAY/STRUCTURE PLANS FOR LOCATIONS
(I)	TOLL EQUIPMENT STRUCTURE TRUSS	TBD	THERMOSET POWDER COAT	DARK BRONZE FEDERAL ID #20062	REFER TO FDOT SPECIFICATIONS 560 AND 975 AND SHEET AP-02
(J)	GUARDRAIL	N/A	GALVANIZED	N/A	PER FDOT STANDARDS
(K)	LIGHT POLE/FIXTURE	TBD	THERMOSET POWDER COAT	DARK BRONZE FEDERAL ID #20062	REFER TO FDOT SPECIFICATIONS 560 AND 975 AND SHEET AP-02
(L)	BRIDGE BEAM	N/A	REFER TO STRUCTURES PLANS	DARK GREEN FEDERAL ID #34227	
(M)	BEAM GRATING	CHERRY HILL FABRICATION, INC. OR AUTHORITY APPROVED EQUAL	ALUMINUM MESH MINIMUM 2" X 2" SQUARE OPENING, 1/2" DEPTH	BLACK FEDERAL ID #27038	
(N)	COLOR CONCRETE PAVING	L.M. SCOFIELD OR AUTHORITY APPROVED EQUAL	BANDS - TROWEL FINISH FIELDS - BROOM FINISH, REFER TO PLANS	LITHACHROME COLOR HARDENER, #53 ARIZONA TAN OR AUTHORITY APPROVED EQUAL	REFER TO SPECIFICATIONS AND SHEETS AP-01 AND AP-21
	SIGN POSTS	N/A	THERMOSET POWDER COAT	BLACK FEDERAL ID #27038	SINGLE AND MULTI-POST SIGNS, REFER TO SHEET AP-02 AND SPECIAL PROVISIONS
	TOLL GANTRY EQUIPMENT BUILDING ROOF	TBD	THERMOSET POWDER COAT	DARK BRONZE FEDERAL ID #20062	
	ITS CABINETS	TBD	THERMOSET POWDER COAT	DARK BRONZE FEDERAL ID #20062	

CONTACT LIST

1. LOGO ACCENTS
PINEAPPLE GROVE DESIGN
P.O. BOX 1121
BOYNTON BEACH, FL 33425
PHONE: (800) 771-4595
FAX: (561) 586-0845
WWW.PINEAPPLEGROVE.COM

2. COATINGS
SHERWIN WILLIAMS
ANY DISTRIBUTOR
PHONE: (800) 4-SHERWIN
PHONE: (800) 474-3794

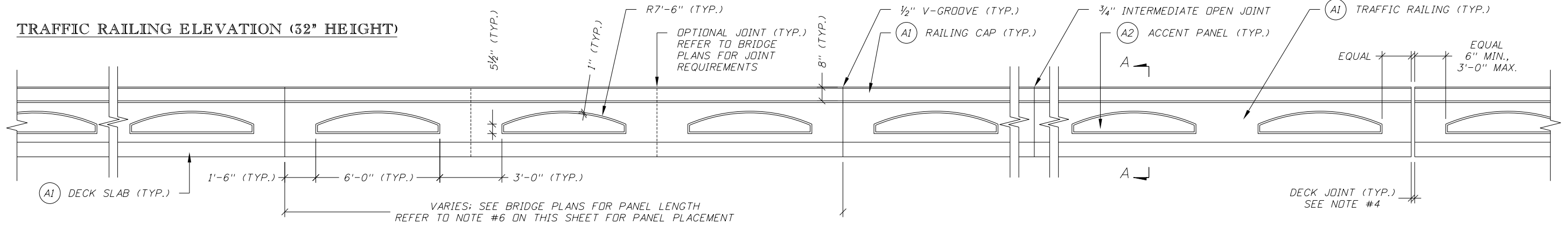
3. FORMLINER
CUSTOMROCK
2020 WEST 7TH STREET
ST. PAUL, MN 55116
PHONE: (651) 699-1345
FAX: (651) 699-1830
WWW.CUSTOMROCK.COM

4. COLOR CONCRETE
L.M. SCOFIELD COMPANY
OR AUTHORITY APPROVED EQUAL
4155 SCOFIELD ROAD
DOUGLASVILLE, GA 30134
PHONE: (770) 920-6000
FAX: (770) 920-6066
WWW.SCOFIELD.COM

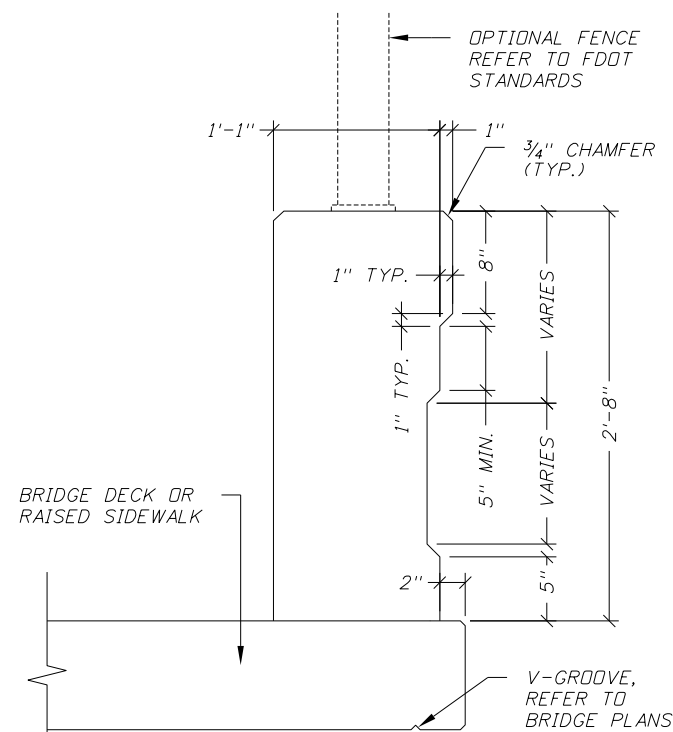
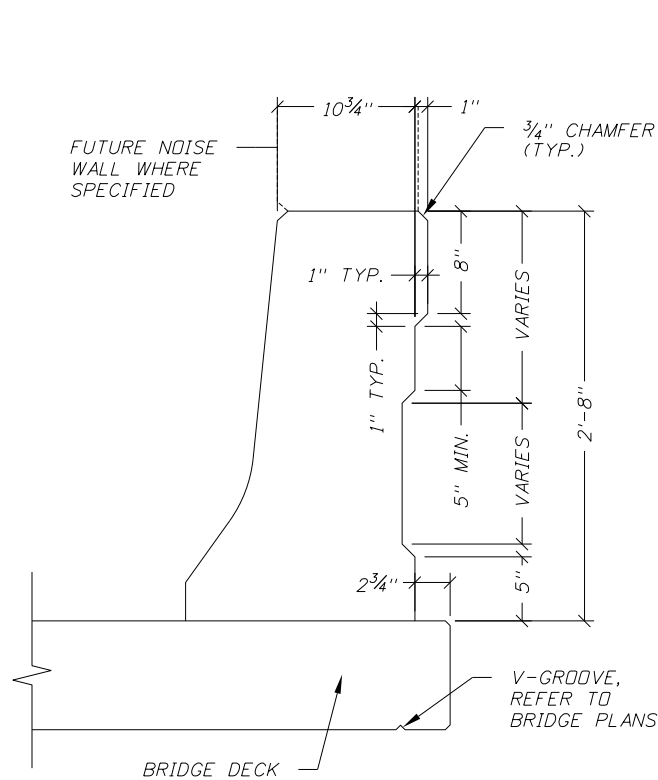
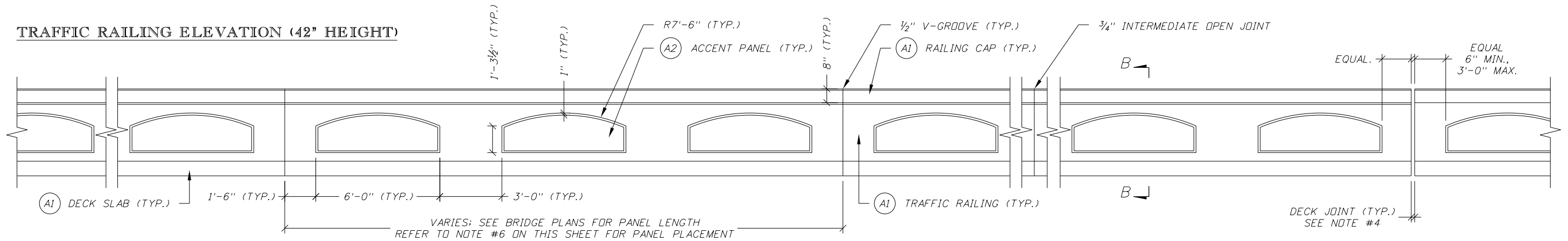
5. BEAM GRATING
CHERRY HILL FABRICATION, INC.
OR AUTHORITY APPROVED EQUAL
PO BOX 247
UPPER FALLS, MD 21156
PHONE: (410) 538-5200
FAX: (410) 538-5388
WWW.CHERRYHILLFAB.COM

REVISIONS						GEORGE C. NOON, P.E. P.E. LICENSE NUMBER 57854 DEWBERRY BOWYER-SINGLETON 520 SOUTH MAGNOLIA AVENUE ORLANDO, FL 32801 CERTIFICATE OF AUTHORIZATION 8794	DRAWN BY:			CENTRAL FLORIDA EXPRESSWAY AUTHORITY			SHEET TITLE:		REF. DWG. NO.		
DATE	BY	DESCRIPTION	DATE	BY	DESCRIPTION		CHECKED BY:			ROAD NO. COUNTY FINANCIAL PROJECT ID			PROJECT NAME:		SHEET NO.		
							SR 429			ORANGE			429-203		SR 429 (WEKIVA PARKWAY)		AP-05
							3/25/2015			4:35:11 PM							

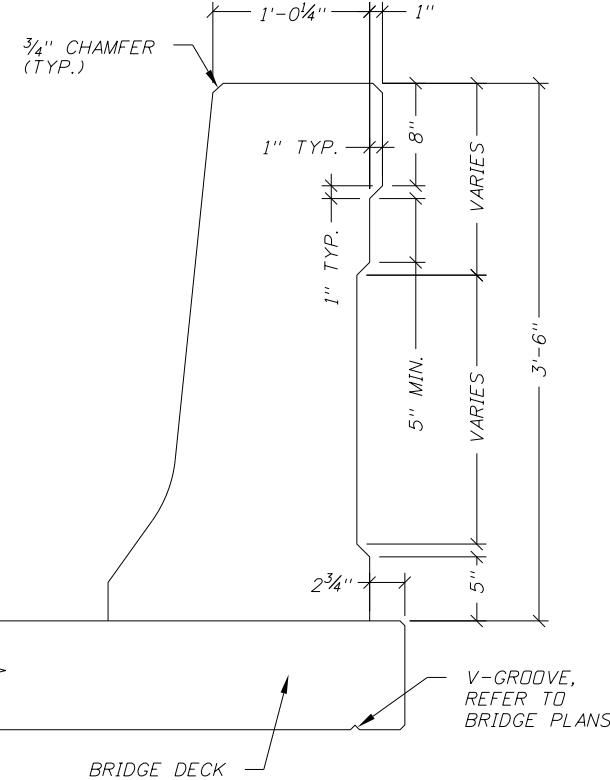
TRAFFIC RAILING ELEVATION (32" HEIGHT)



TRAFFIC RAILING ELEVATION (42" HEIGHT)



SECTION A-A

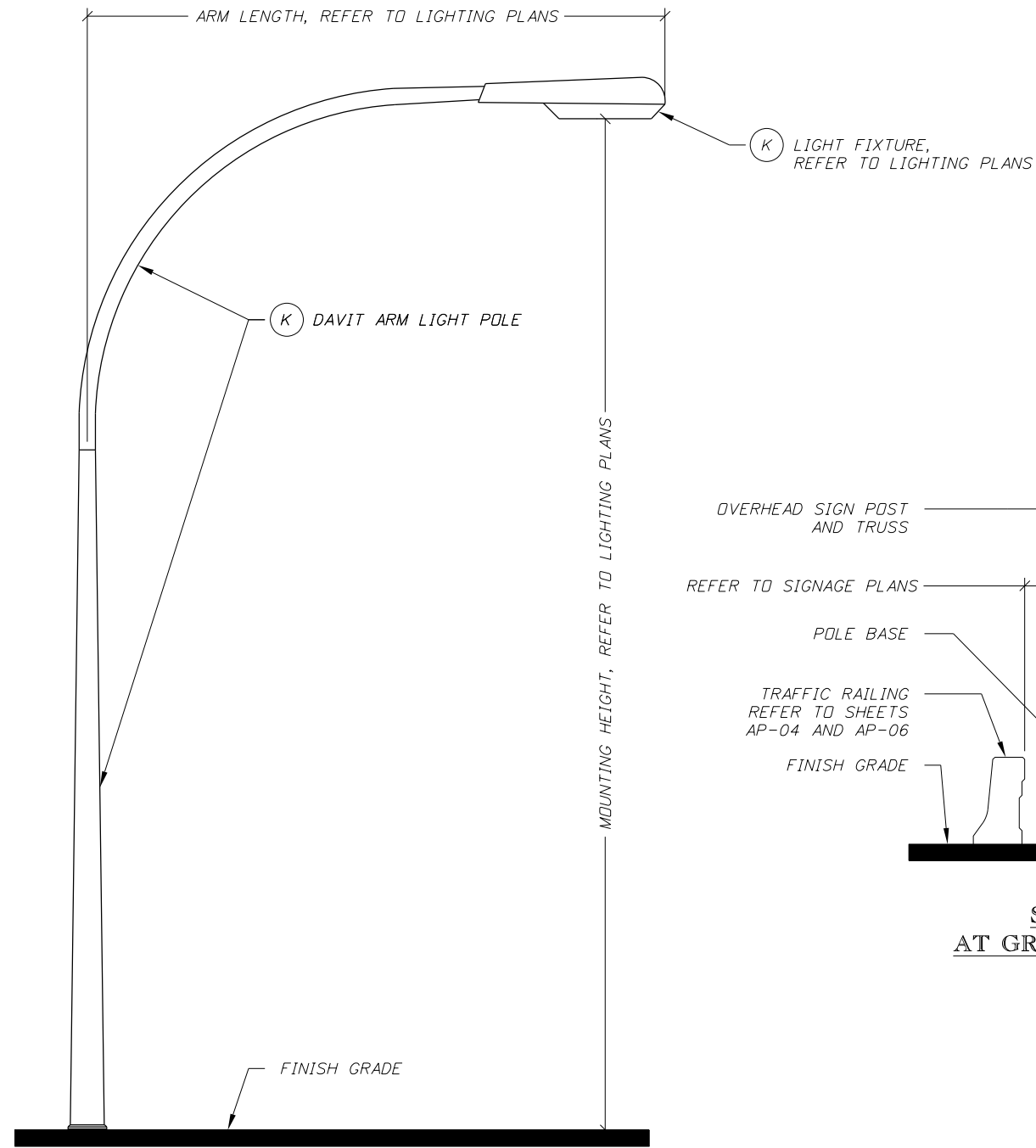


SECTION B-B

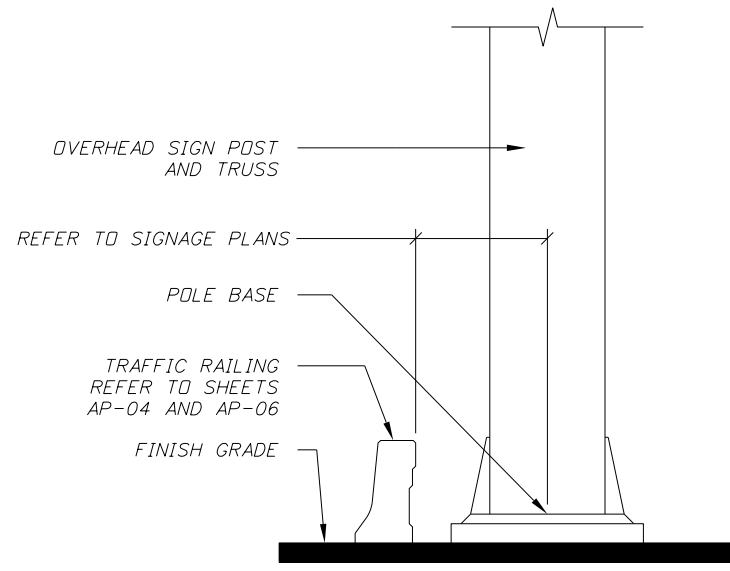
TRAFFIC RAILING NOTES

1. SEE STANDARD INDICES 420, 423, 425 AND 5210 FOR ADDITIONAL DETAILS.
2. REFER TO SHEET AP-04 FOR SURFACE TREATMENTS.
3. THE ARCHITECTURAL TRAFFIC RAILING TREATMENTS SHALL BE USED ON THE OUTSIDE OF ALL BRIDGES.
4. SEE BRIDGE PLANS FOR LOCATION AND ORIENTATION OF DECK JOINTS. OPEN BARRIER JOINTS AT DECK JOINT LOCATIONS SHALL MATCH THE DIMENSION OF THE DECK JOINT.
5. CONTRACTOR SHALL CONSIDER LOCATION OF REQUIRED DECK EXPANSION JOINTS (REFER TO STRUCTURES PLANS) IN PLACEMENT OF TRAFFIC RAILING TO ENSURE CONSISTENT AESTHETIC TREATMENT ACROSS ALL BRIDGE SPANS AND APPROACH SLABS.
6. RAILING ARCH PANELS SHALL BE PLACED STARTING FROM THE CENTER OF THE BRIDGE SPAN SO THAT ANY ADJUSTMENTS TO PANEL LENGTH ARE MADE AT THE ABUTMENT ENDS ADJACENT TO THE BRIDGE JOINT(S).
7. ON MULTI-SPAN BRIDGES, THE BRIDGE JOINT MAY BIFURCATE THE CENTER OF AN ARCH PANEL IF REQUIRED. THE TRAFFIC RAILING ON BOTH SIDES OF THE JOINT SHALL BE EQUAL.
8. SHOP DRAWINGS SHALL BE SUBMITTED TO CEI FOR REVIEW AND APPROVAL. SHOP DRAWINGS SHALL INCLUDE DIMENSION OF PANELS, REINFORCEMENT (INCLUDING TRANSITIONS AT APPROACH SLABS), ELEVATION ILLUSTRATING PLACEMENT OF ARCHES, BRIDGE EXPANSION JOINTS/TRAFFIC RAILING TRANSITIONS AND ANY OTHER PERTINENT DATA NECESSARY FOR THE CONSTRUCTION OF THE ARCHITECTURAL TRAFFIC RAILING BARRIERS.
9. REFER TO BRIDGE/STRUCTURES PLANS FOR SPECIFIC REQUIREMENTS RELATED TO TRAFFIC RAILING JOINTING. JOINTS WILL VARY BASED ON PROPOSED RAILING TYPES.

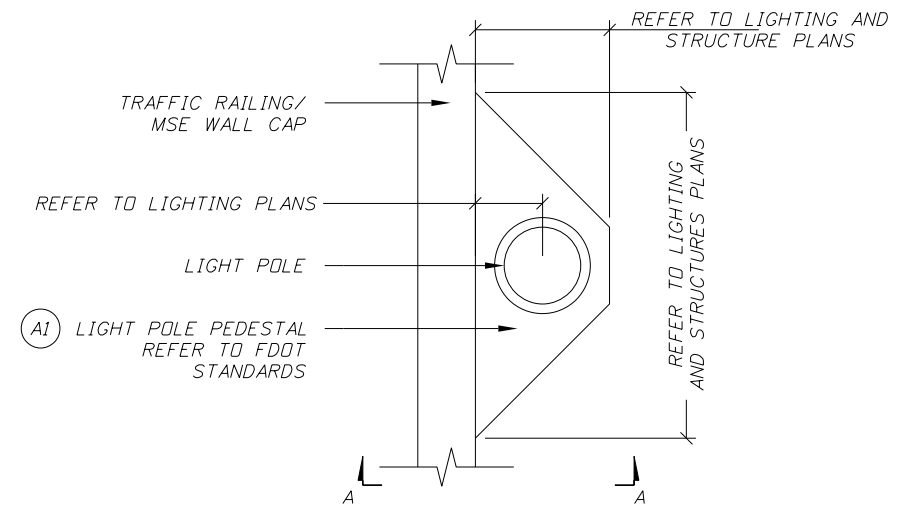
REVISIONS						GEORGE C. NOON, P.E. P.E. LICENSE NUMBER 57854 DEWBERRY BOWYER-SINGLETON 520 SOUTH MAGNOLIA AVENUE ORLANDO, FL 32801 CERTIFICATE OF AUTHORIZATION 8794	DRAWN BY:			SHEET TITLE: TRAFFIC RAILING AESTHETICS NOTES/SCHEMATICS	REF. DWG. NO.	
DATE	BY	DESCRIPTION	DATE	BY	DESCRIPTION		CENTRAL FLORIDA EXPRESSWAY AUTHORITY					
							ROAD NO.	COUNTY	FINANCIAL PROJECT ID			PROJECT NAME:
							SR 429	ORANGE	429-203			SR 429 (WEKIVA PARKWAY)
						3/25/2015 4:35:12 PM jmorales			AP-06			



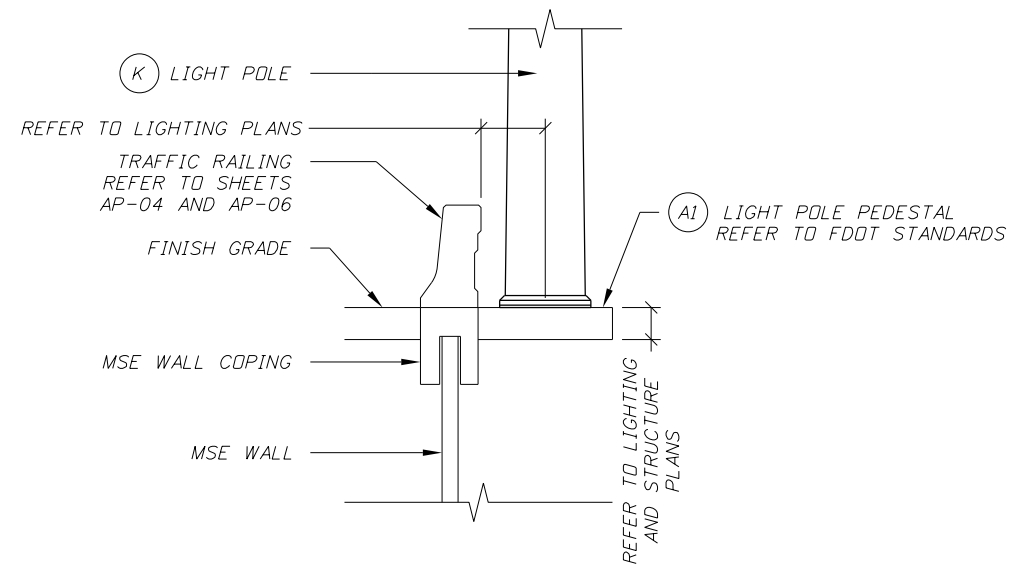
LIGHT POLE ELEVATION



SIGN POST AT GRADE MOUNTING



BRIDGE DECK / MSE WALL LIGHTING SUPPORT PLAN VIEW



BRIDGE DECK / MSE WALL LIGHTING SUPPORT SECTION A-A

NOTES

1. REFER TO LIGHTING PLANS FOR SPECIFIC FIXTURE, POLE, AND OVERALL LIGHTING REQUIREMENTS.

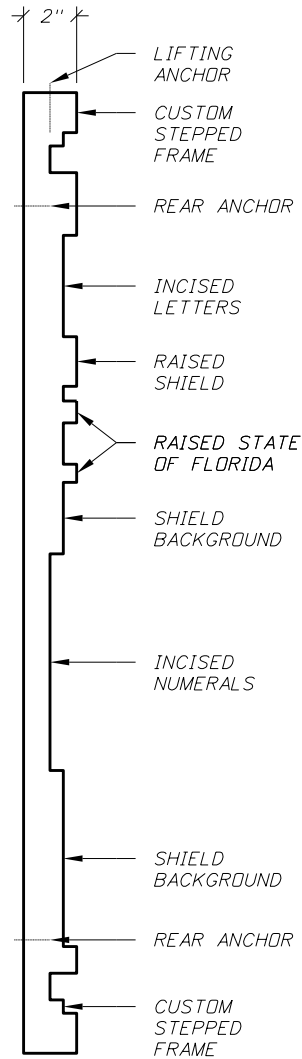
REVISIONS						GEORGE C. NOON, P.E. P.E. LICENSE NUMBER 57854 DEWBERRY BOWYER-SINGLETON 520 SOUTH MAGNOLIA AVENUE ORLANDO, FL 32801 CERTIFICATE OF AUTHORIZATION 8794	DRAWN BY:	CENTRAL FLORIDA EXPRESSWAY AUTHORITY			SHEET TITLE:	REF. DWG. NO.
DATE	BY	DESCRIPTION	DATE	BY	DESCRIPTION		CHECKED BY:					
							DESIGNED BY:	ROAD NO.	COUNTY	FINANCIAL PROJECT ID	PROJECT NAME:	SHEET NO.
							CHECKED BY:	SR 429	ORANGE	429-203	SR 429 (WEKIVA PARKWAY)	AP-07



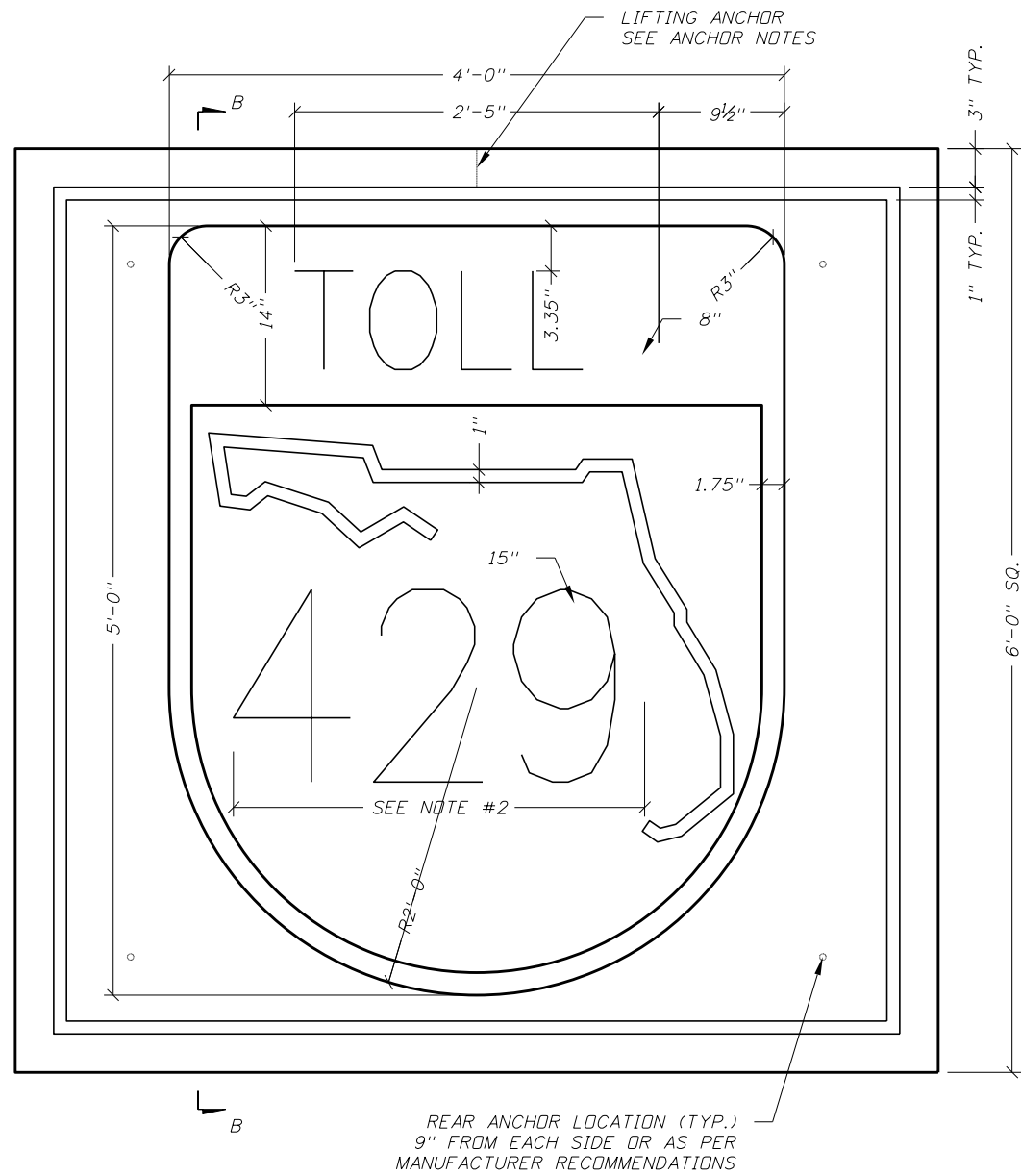
REAR ANCHOR LOCATION (TYP.)
4.25" FROM EACH SIDE OR AS PER
MANUFACTURER RECOMMENDATIONS

MEDALLION A: 5'-0" X 5'-0"

** OPTIONAL CFX LOGO MEDALLION TO BE DETERMINED



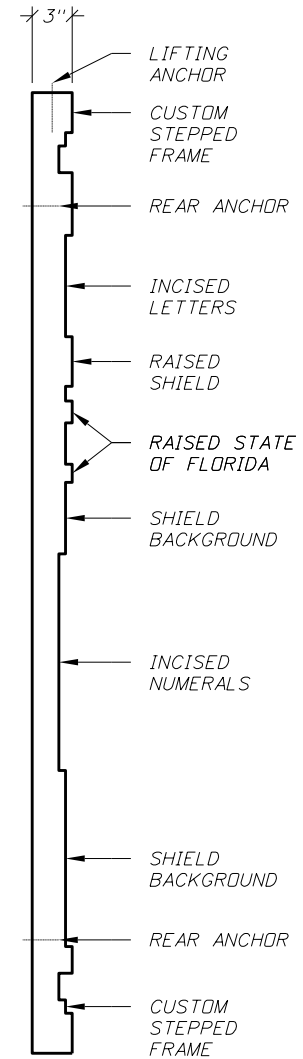
SECTION A-A



REAR ANCHOR LOCATION (TYP.)
9" FROM EACH SIDE OR AS PER
MANUFACTURER RECOMMENDATIONS

MEDALLION B: 6'-0" X 6'-0"

** OPTIONAL CFX LOGO MEDALLION TO BE DETERMINED



SECTION B-B

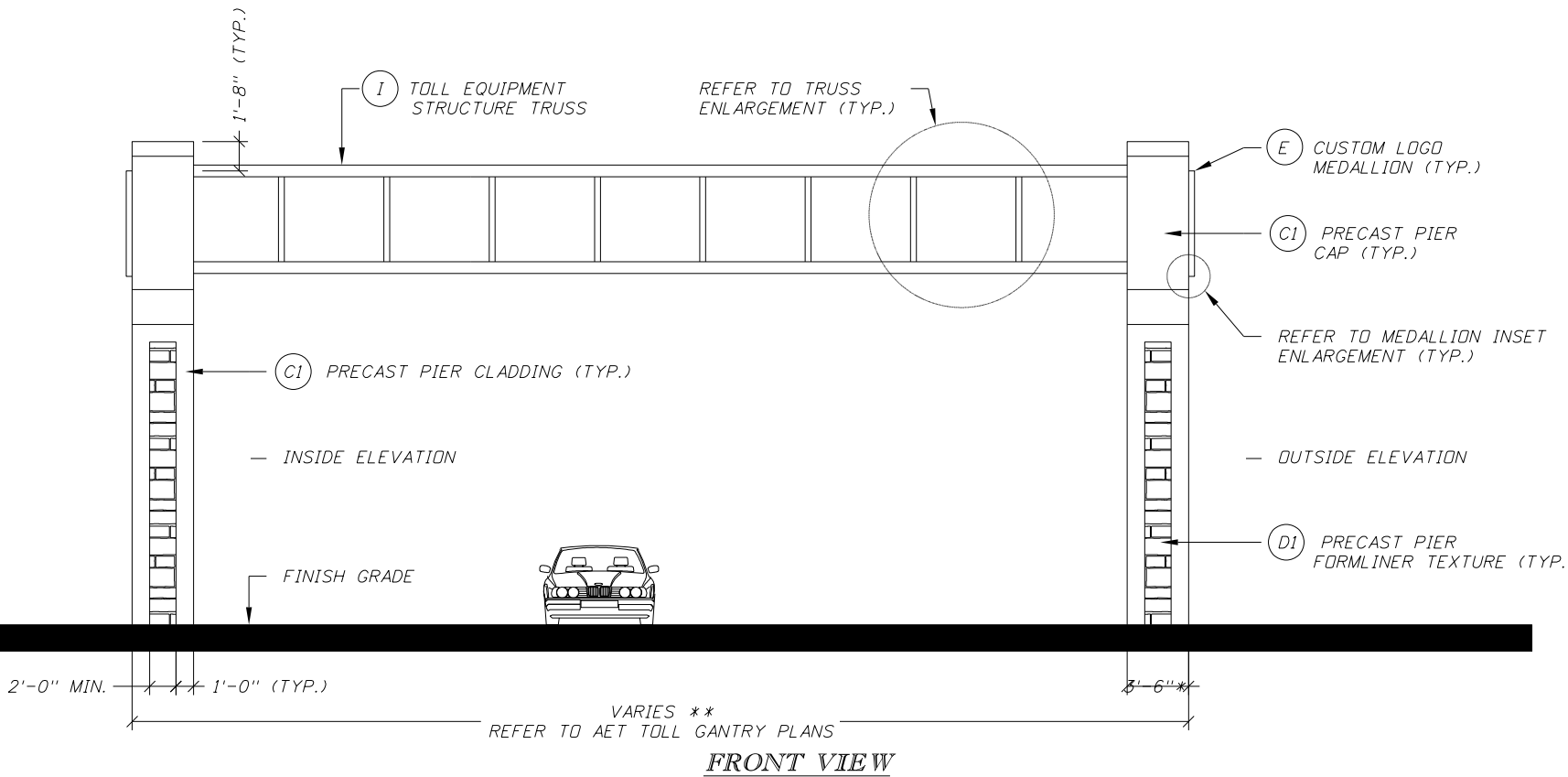
GENERAL NOTES

1. CONTRACTOR TO SUBMIT SHOP DRAWINGS FOR MEDALLION DETAILS.
2. FABRICATOR SHALL USE STANDARD HORIZONTAL SPACING FOR NUMERALS WITHIN A ROUTE SHIELD WHEN POSSIBLE. FABRICATOR SHALL OPTICALLY ADJUST NUMERAL SPACING AS NEEDED TO PREVENT OVERLAP ONTO THE STATE OUTLINE OR SHIELD BORDER.
3. FONT STYLE FOR LETTERS AND NUMERALS SHALL MATCH CFX STANDARDS AS CLOSELY AS POSSIBLE.
4. 1/2" MINIMUM TOLERANCE REQUIRED IN SURROUNDING OPENING DIMENSIONS. REFER TO MANUFACTURER'S SPECIFICATIONS AND SPECIAL PROVISIONS FOR MORE INFORMATION.

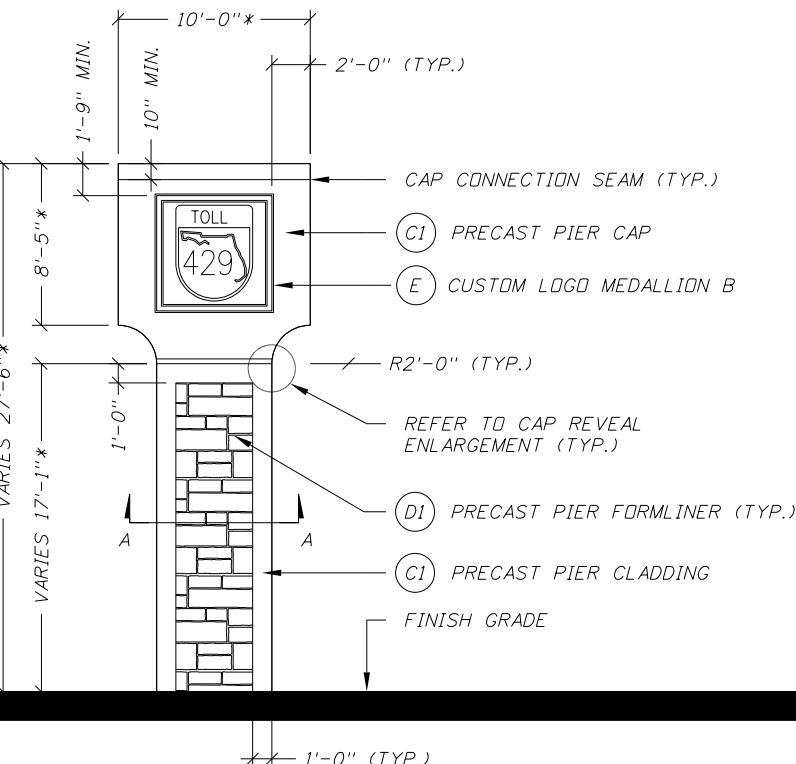
ANCHOR NOTES

3. LIFTING ANCHOR TO BE STAINLESS STEEL COIL LOOP INSERT. REFER TO MANUFACTURER'S SPECIFICATIONS FOR MORE INFORMATION.
4. REAR ANCHORS TO BE STAINLESS STEEL FLARED THIN SLAB COIL INSERT. REFER TO MANUFACTURER'S SPECIFICATIONS AND SPECIAL PROVISIONS FOR MORE INFORMATION.

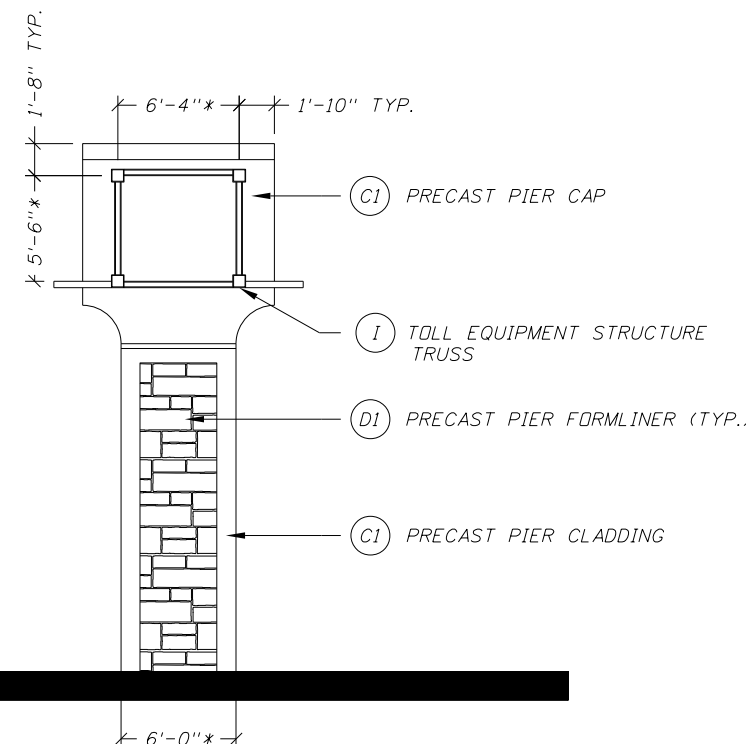
REVISIONS						GEORGE C. NOON, P.E. P.E. LICENSE NUMBER 57854 DEWBERRY BOWYER-SINGLETON 520 SOUTH MAGNOLIA AVENUE ORLANDO, FL 32801 CERTIFICATE OF AUTHORIZATION 8794	DRAWN BY:			CENTRAL FLORIDA EXPRESSWAY AUTHORITY			SHEET TITLE:		REF. DWG. NO.
DATE	BY	DESCRIPTION	DATE	BY	DESCRIPTION		CHECKED BY:			PROJECT NAME:			SHEET NO.		
							DESIGNED BY:	ROAD NO.	COUNTY	FINANCIAL PROJECT ID	SR 429 (WEKIVA PARKWAY)			AP-08	
							CHECKED BY:	SR 429	ORANGE	429-203					



FRONT VIEW



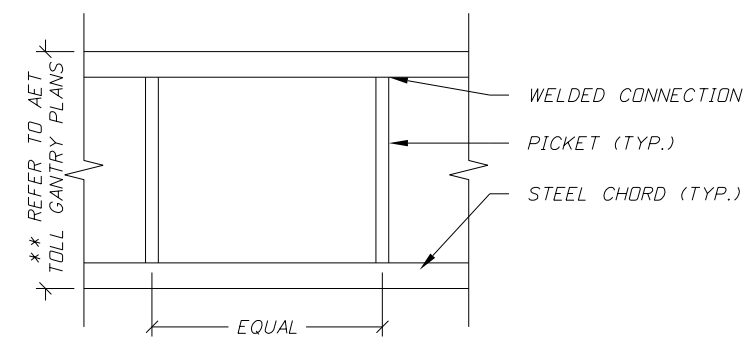
OUTSIDE ELEVATION



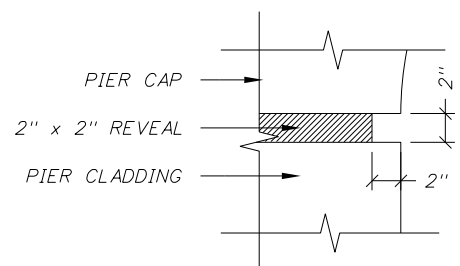
INSIDE ELEVATION

NOTES

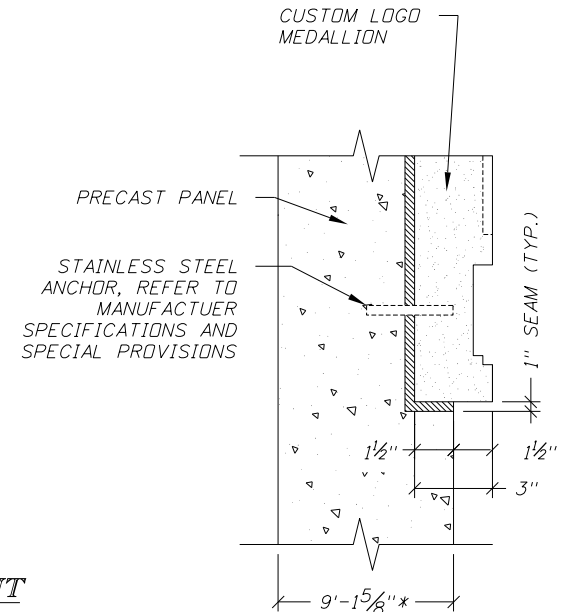
1. REFER TO SHEETS AP-01 THROUGH AP-03 FOR GENERAL NOTES.
2. REFER TO SHEET AP-04 FOR COATING SCHEDULE (TYP.).
3. REFER TO SHEET AP-05, MATERIAL FINISHES SCHEDULE, FOR MORE INFORMATION.
4. CAP CONNECTION SEAM SHALL BE CAULKED AND FINISHED TO MATCH COLOR OF PRECAST PIER CAP.



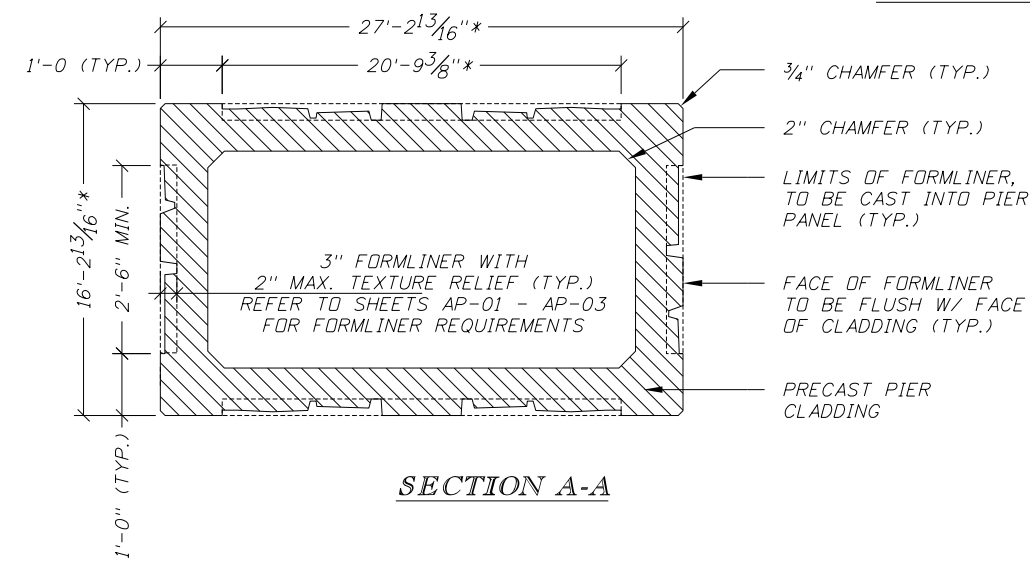
TRUSS ENLARGEMENT



CAP REVEAL ENLARGEMENT



MEDALLION INSET ENLARGEMENT



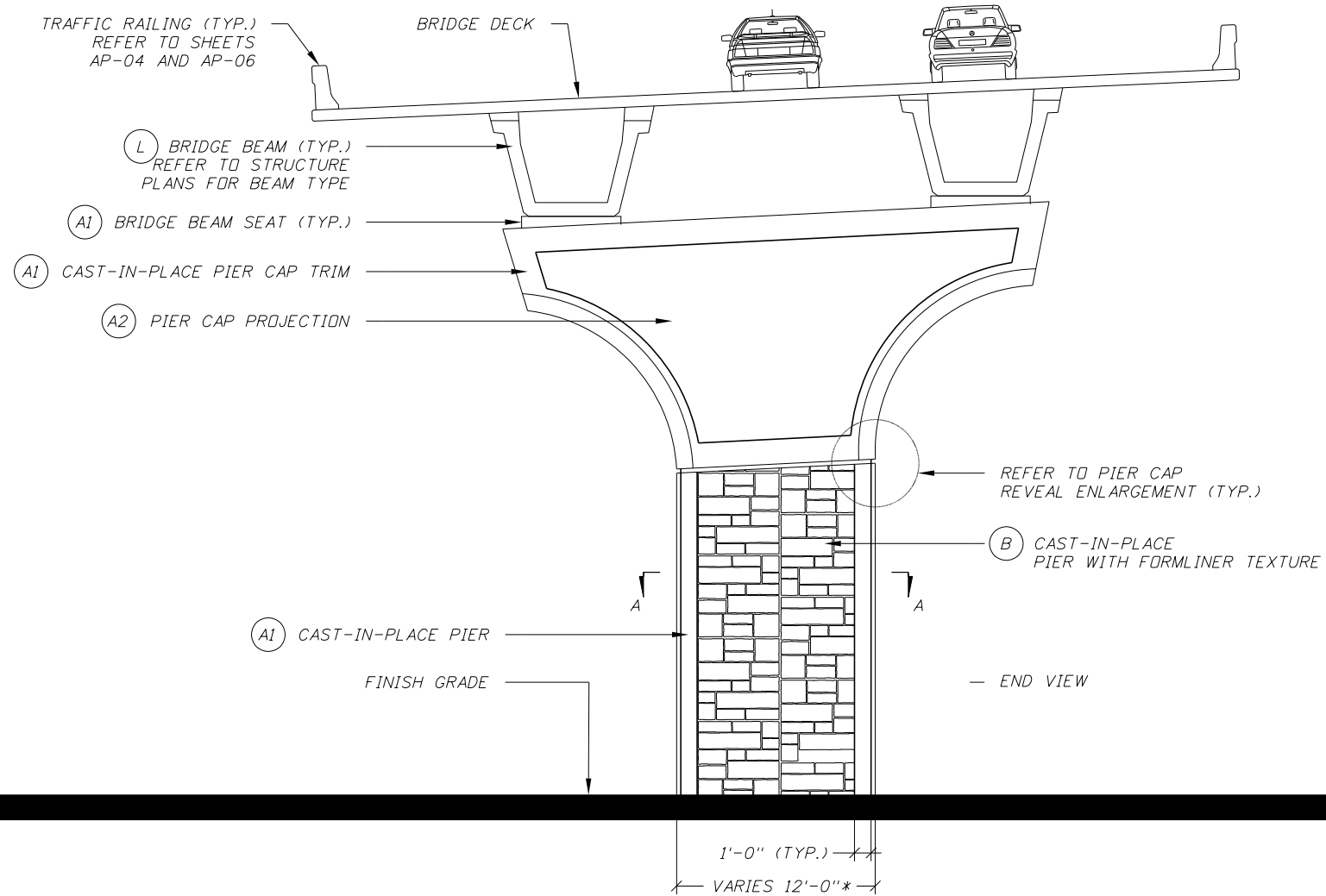
SECTION A-A

** ELEVATIONS SHOWN ARE SCHEMATICS FOR ILLUSTRATIVE PURPOSES ONLY. REFER TO AET TOLL FACILITY PLANS FOR SPECIFIC DIMENSIONS AND ADDITIONAL REQUIREMENTS FOR ALL TOLL EQUIPMENT ELEMENTS.

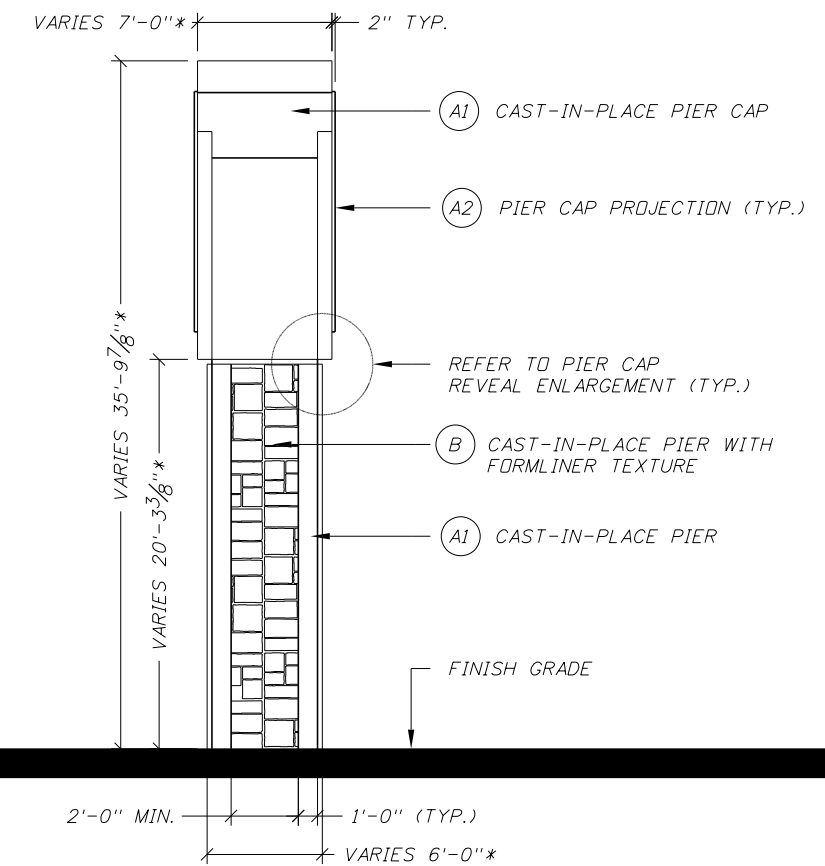
REVISIONS						GEORGE C. NOON, P.E. P.E. LICENSE NUMBER 57854 DEWBERRY BOWYER-SINGLETON 520 SOUTH MAGNOLIA AVENUE ORLANDO, FL 32801 CERTIFICATE OF AUTHORIZATION 8794	DRAWN BY:	CENTRAL FLORIDA EXPRESSWAY AUTHORITY			SHEET TITLE:	REF. DWG. NO.
DATE	BY	DESCRIPTION	DATE	BY	DESCRIPTION		CHECKED BY:	ROAD NO.	COUNTY	FINANCIAL PROJECT ID	TOLL EQUIPMENT STRUCTURE AESTHETICS SCHEMATICS	
							DESIGNED BY:	SR 429	ORANGE	429-203	PROJECT NAME:	SHEET NO.
							CHECKED BY:				SR 429 (WEKIVA PARKWAY)	AP-09

NOTES

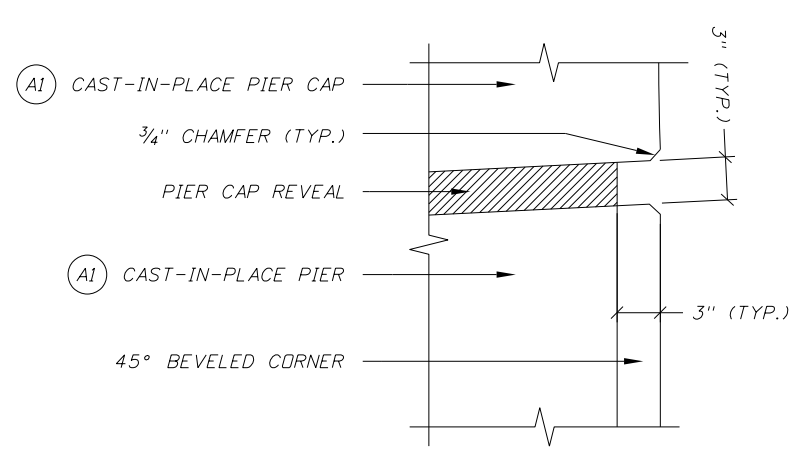
1. REFER TO SHEET AP-01 FOR GENERAL REQUIREMENTS.
2. REFER TO SHEET AP-04 FOR COATING SCHEDULE (TYP.).



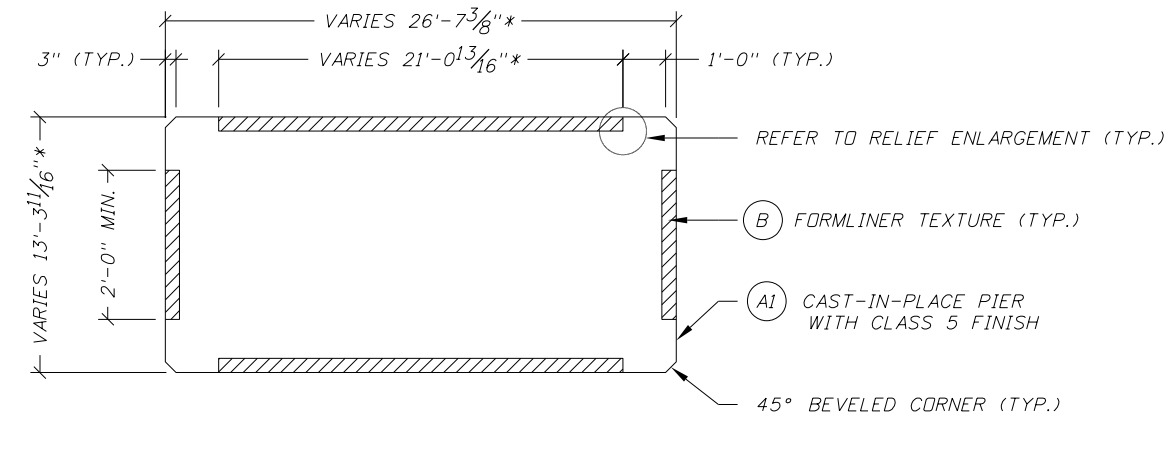
PIER ELEVATION



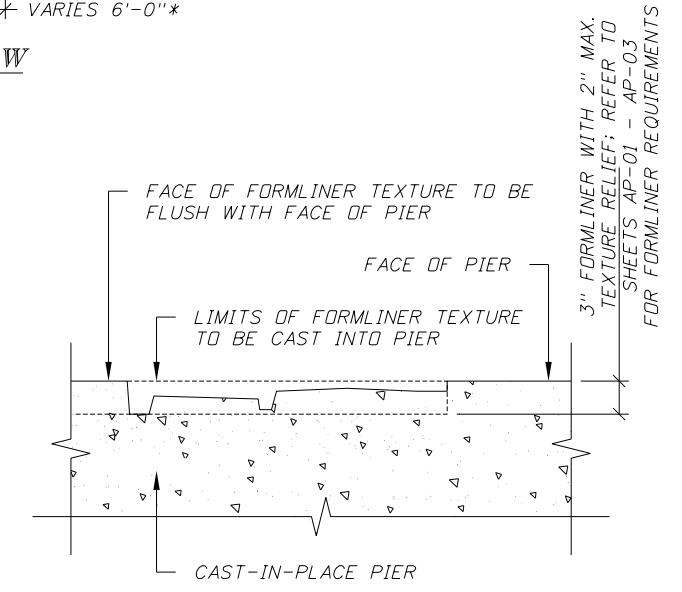
END VIEW



PIER CAP REVEAL ENLARGEMENT



SECTION A-A



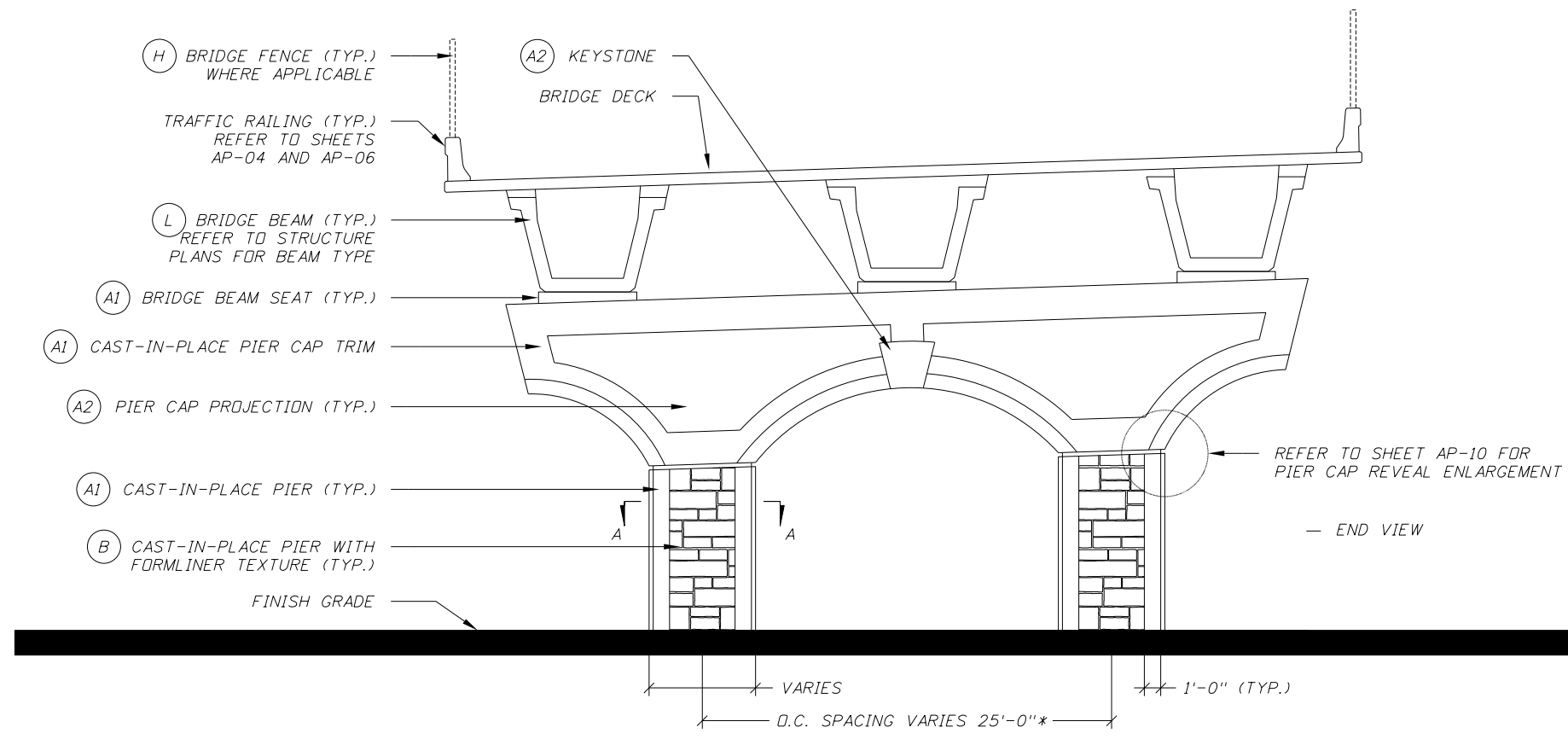
RELIEF ENLARGEMENT

** REFER TO STRUCTURE PLANS FOR PIER GEOMETRY DETAILS AND SPECIFIC DIMENSIONS FOR ALL PIER ELEMENTS (PIER, CAP, CAP PANELS, KEYSTONE, ETC.)

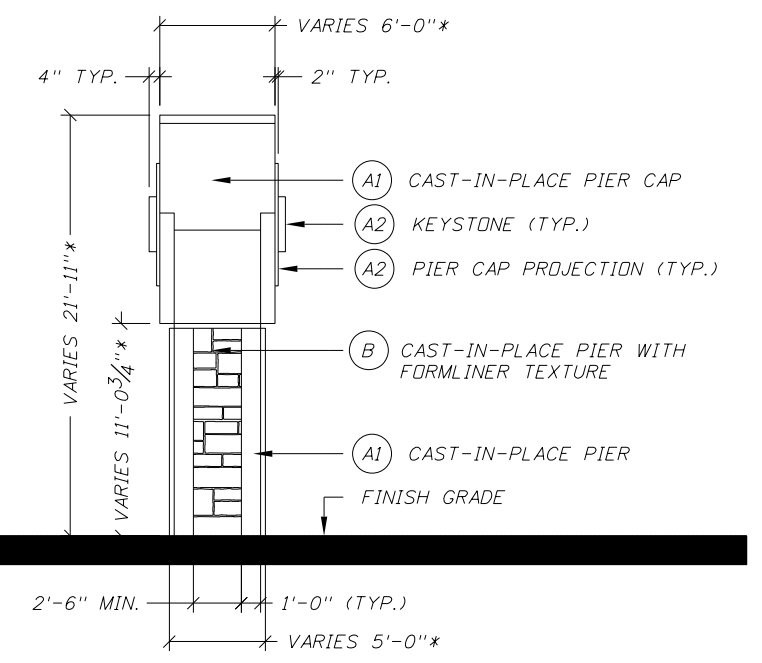
REVISIONS						GEORGE C. NOON, P.E. P.E. LICENSE NUMBER 57854 DEWBERRY BOWYER-SINGLETON 520 SOUTH MAGNOLIA AVENUE ORLANDO, FL 32801 CERTIFICATE OF AUTHORIZATION 8794	DRAWN BY: CHECKED BY: DESIGNED BY: CHECKED BY:	CENTRAL FLORIDA EXPRESSWAY AUTHORITY			SHEET TITLE: BRIDGE PIER SCHEMATICS SINGLE COLUMN PIER	REF. DWG. NO.		
DATE	BY	DESCRIPTION	DATE	BY	DESCRIPTION			ROAD NO.	COUNTY	FINANCIAL PROJECT ID			PROJECT NAME: SR 429 (WEKIVA PARKWAY)	SHEET NO. AP-10
								SR 429	ORANGE	429-203				

NOTES

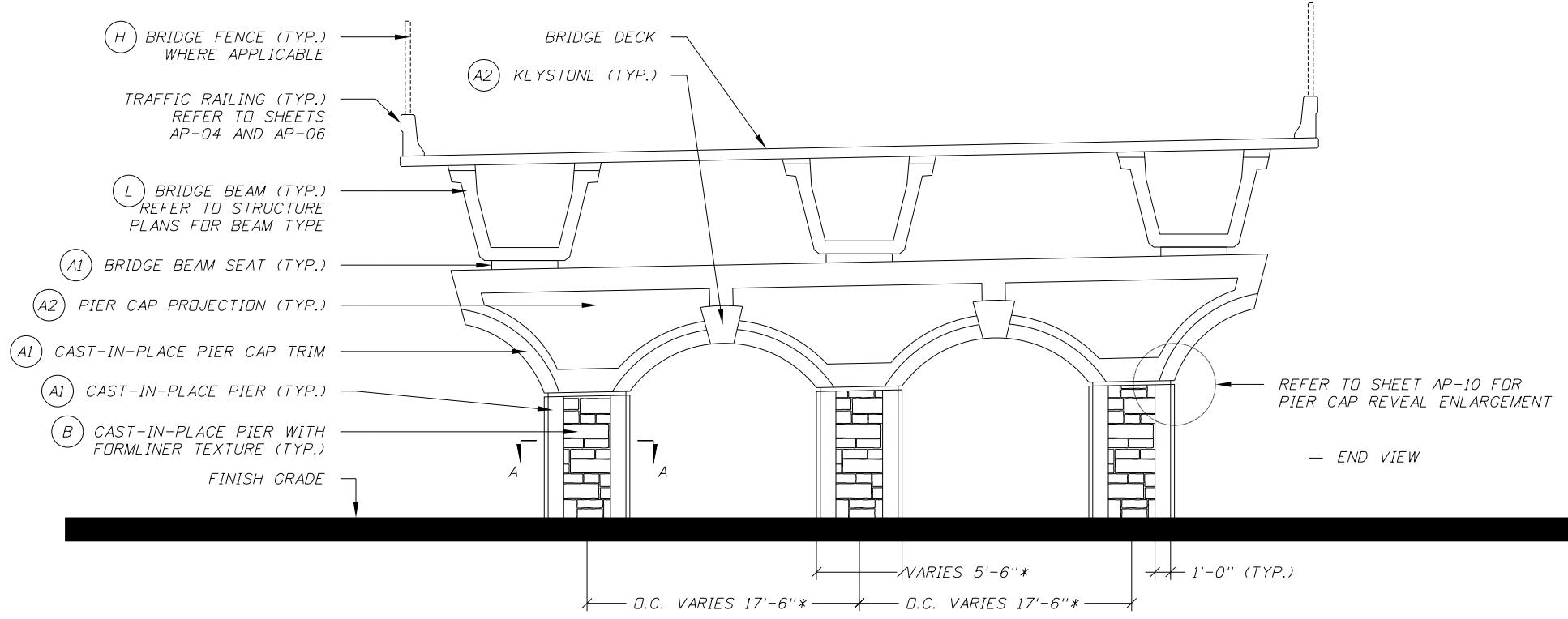
1. REFER TO SHEET AP-01 FOR GENERAL REQUIREMENTS.
2. REFER TO SHEET AP-04 FOR COATING SCHEDULE (TYP.).



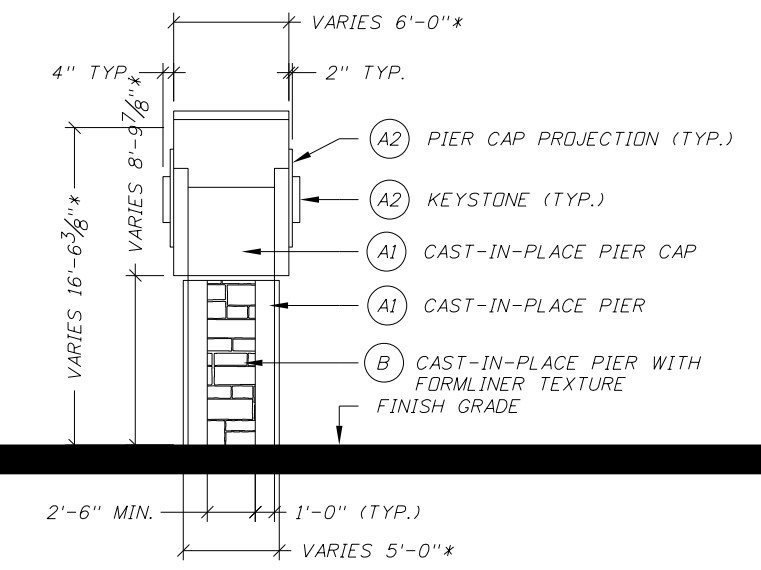
DOUBLE COLUMN PIER ELEVATION



END VIEW



TRIPLE COLUMN PIER ELEVATION



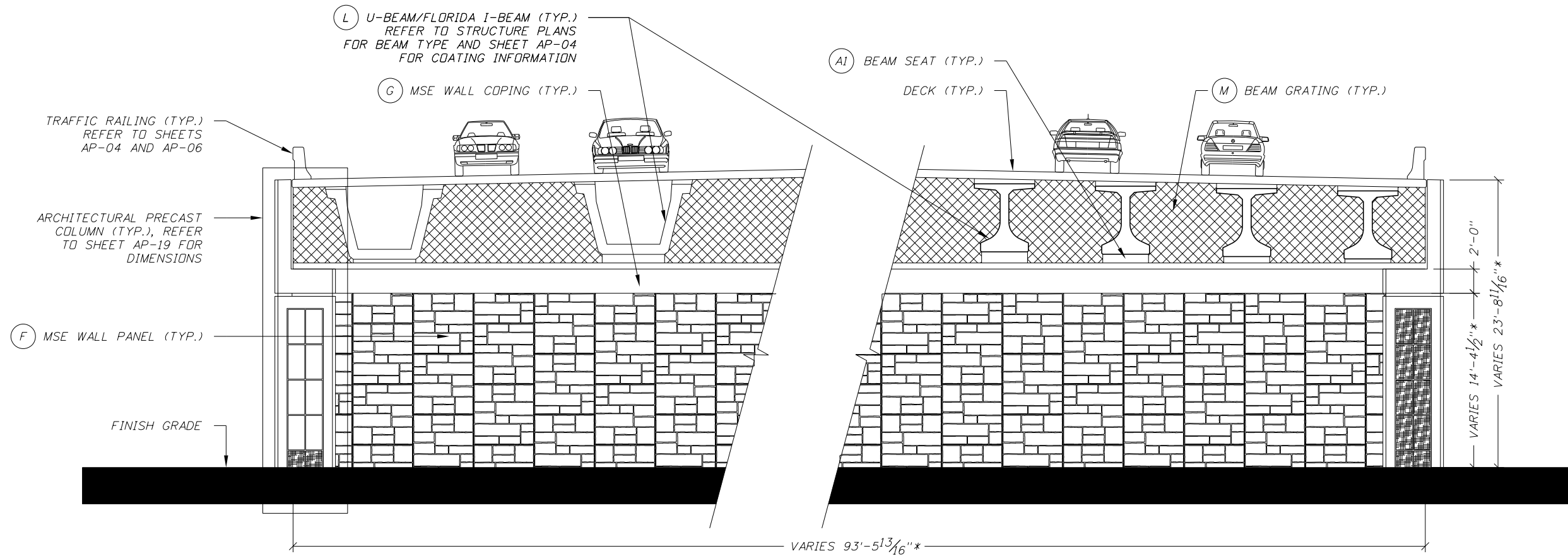
END VIEW

** REFER TO STRUCTURE PLANS FOR PIER GEOMETRY DETAILS AND SPECIFIC DIMENSIONS FOR ALL PIER ELEMENTS (PIER, CAP, CAP PANELS, KEYSTONE, ETC.)

REVISIONS						GEORGE C. NOON, P.E. P.E. LICENSE NUMBER 57854 DEWBERRY BOWYER-SINGLETON 520 SOUTH MAGNOLIA AVENUE ORLANDO, FL 32801 CERTIFICATE OF AUTHORIZATION 8794	DRAWN BY:	CENTRAL FLORIDA EXPRESSWAY AUTHORITY			SHEET TITLE:	REF. DWG. NO.	
DATE	BY	DESCRIPTION	DATE	BY	DESCRIPTION		CHECKED BY:	ROAD NO.	COUNTY	FINANCIAL PROJECT ID	BRIDGE PIER SCHEMATICS MULTI-COLUMN PIER		
							DESIGNED BY:	SR 429	ORANGE	429-203	PROJECT NAME:	SR 429 (WEKIVA PARKWAY)	SHEET NO.
							CHECKED BY:					AP-11	

NOTES

1. REFER TO STRUCTURE PLANS FOR SPECIFIC DIMENSIONS.
2. REFER TO SHEET AP-04 FOR COATING INFORMATION.
3. REFER TO SHEET AP-05 FOR MATERIAL FINISHES SCHEDULE.
4. BRIDGE COLUMNS MAY VARY BASED ON BRIDGE HEIGHTS. REFER TO SHEETS AP-18 AND AP-19 FOR APPROPRIATE COLUMN APPLICATION.



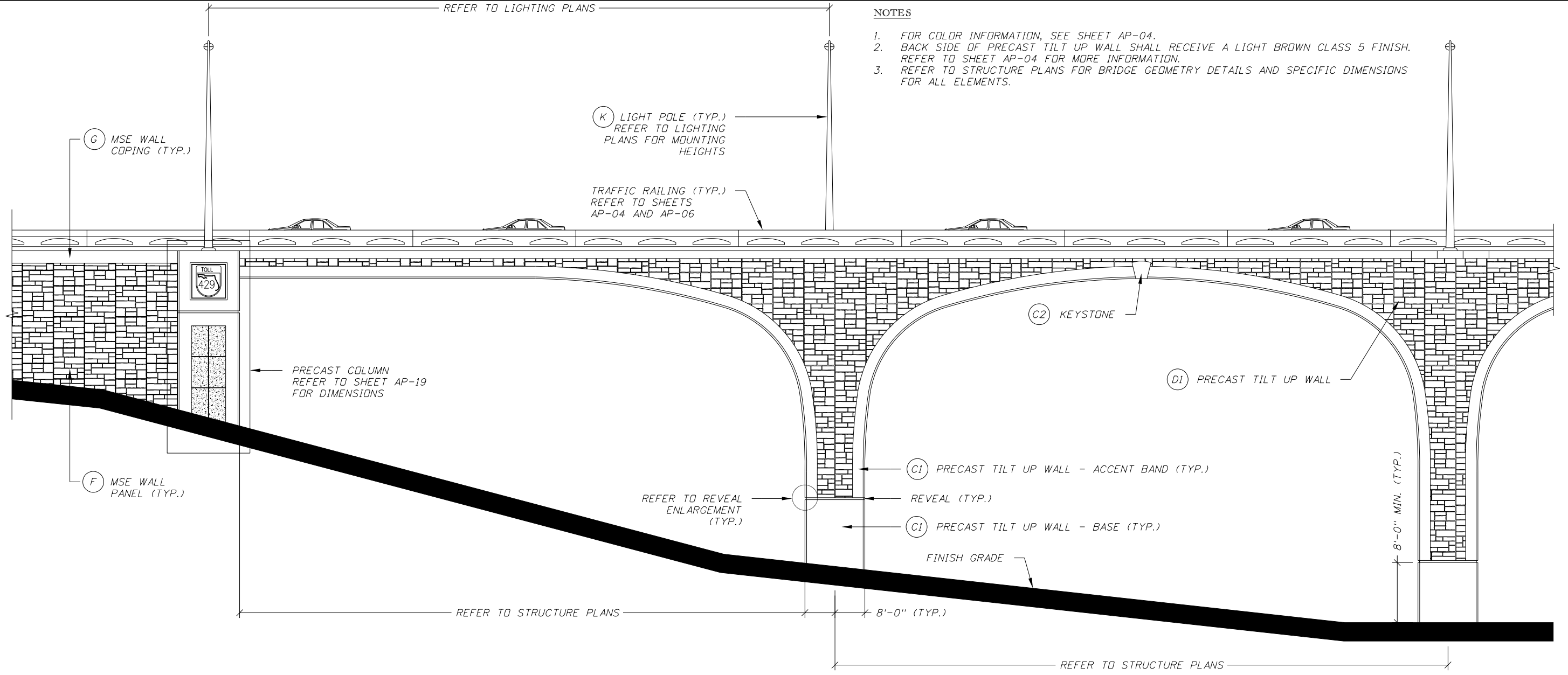
UNDERBRIDGE ELEVATION (TYPICAL)

** REFER TO STRUCTURE PLANS FOR BRIDGE GEOMETRY DETAILS AND SPECIFIC DIMENSIONS FOR ALL BRIDGE ELEMENTS.

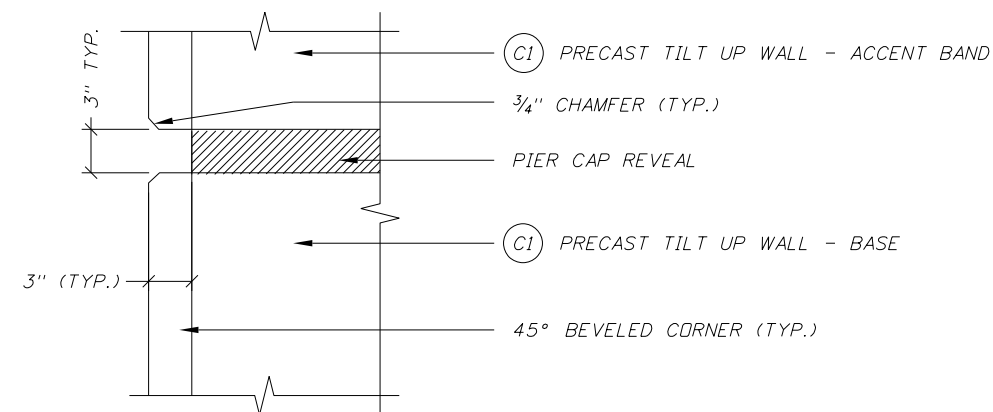
REVISIONS						GEORGE C. NOON, P.E. P.E. LICENSE NUMBER 57854 DEWBERRY BOWYER-SINGLETON 520 SOUTH MAGNOLIA AVENUE ORLANDO, FL 32801 CERTIFICATE OF AUTHORIZATION 8794	DRAWN BY:	CENTRAL FLORIDA EXPRESSWAY AUTHORITY			SHEET TITLE:	REF. DWG. NO.
DATE	BY	DESCRIPTION	DATE	BY	DESCRIPTION		CHECKED BY:	BRIDGE ELEVATIONS				
							DESIGNED BY:	ROAD NO.	COUNTY	FINANCIAL PROJECT ID	PROJECT NAME:	SHEET NO.
							CHECKED BY:	SR 429	ORANGE	429-203	SR 429 (WEKIVA PARKWAY)	AP-15

NOTES

1. FOR COLOR INFORMATION, SEE SHEET AP-04.
2. BACK SIDE OF PRECAST TILT UP WALL SHALL RECEIVE A LIGHT BROWN CLASS 5 FINISH. REFER TO SHEET AP-04 FOR MORE INFORMATION.
3. REFER TO STRUCTURE PLANS FOR BRIDGE GEOMETRY DETAILS AND SPECIFIC DIMENSIONS FOR ALL ELEMENTS.

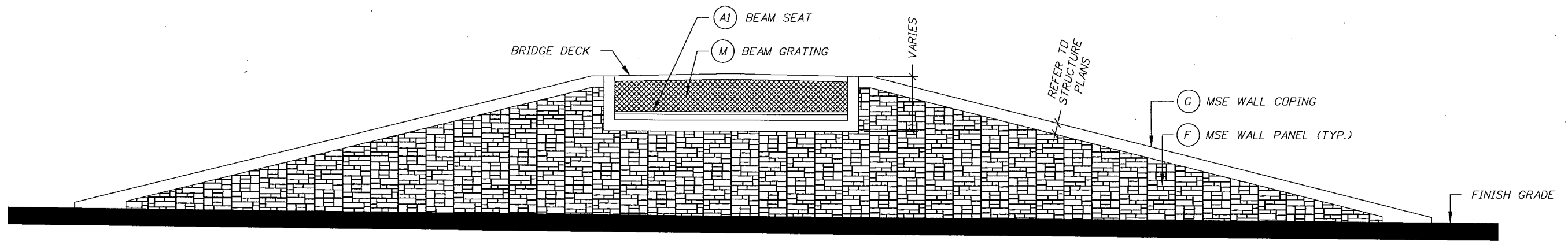


LOW AREA / LAKE VICTOR ELEVATION



REVEAL ENLARGEMENT

REVISIONS						GEORGE C. NOON, P.E. P.E. LICENSE NUMBER 57854 DEWBERRY BOWYER-SINGLETON 520 SOUTH MAGNOLIA AVENUE ORLANDO, FL 32801 CERTIFICATE OF AUTHORIZATION 8794	DRAWN BY:	CENTRAL FLORIDA EXPRESSWAY AUTHORITY			SHEET TITLE:	REF. DWG. NO.
DATE	BY	DESCRIPTION	DATE	BY	DESCRIPTION		CHECKED BY:				BRIDGE ELEVATIONS	
							DESIGNED BY:	ROAD NO.	COUNTY	FINANCIAL PROJECT ID	PROJECT NAME:	SHEET NO.
								SR 429	ORANGE	429-203	SR 429 (WEKIVA PARKWAY)	AP-16



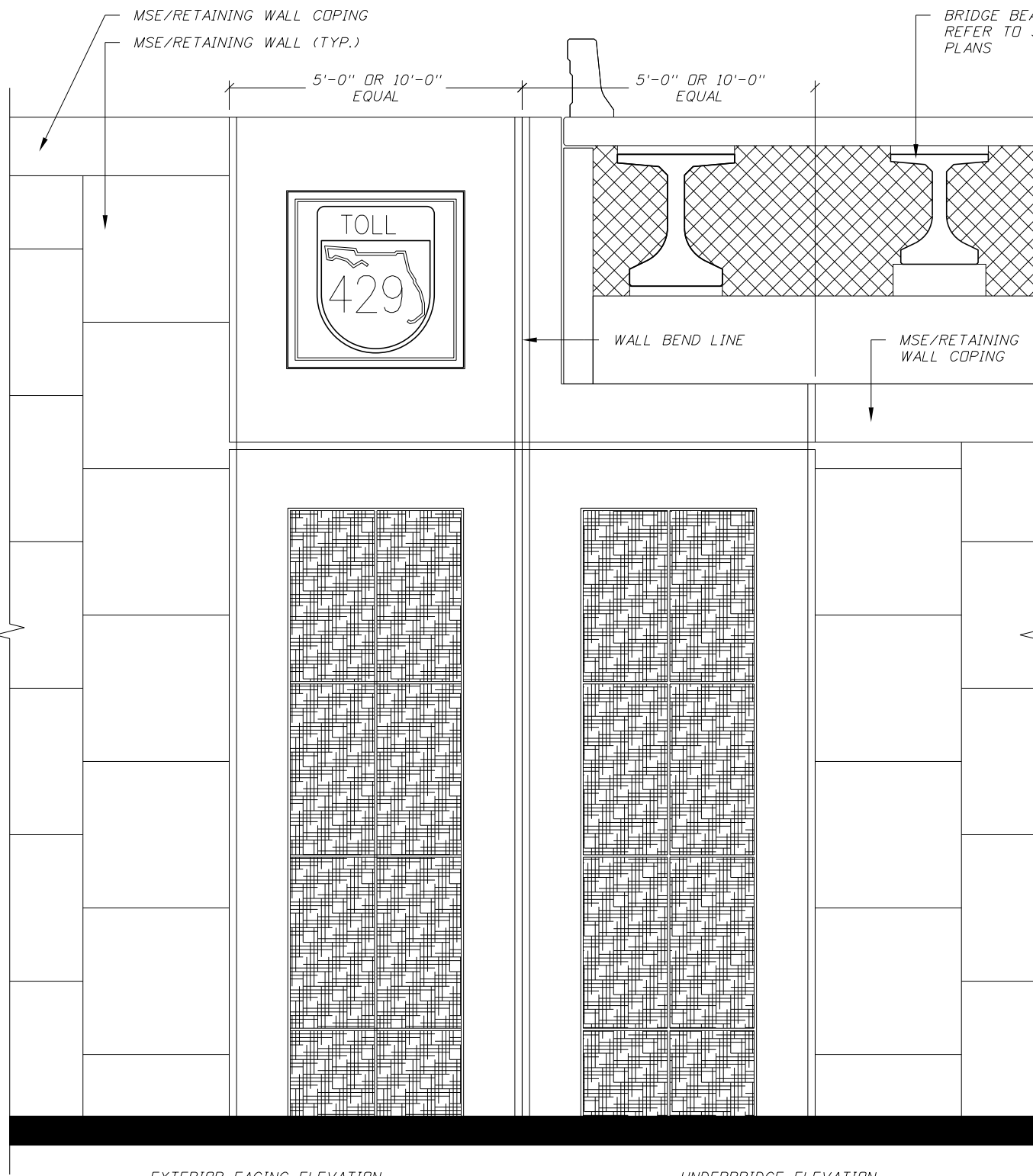
UNDERBRIDGE MSE WALL

BRIDGE NOS. 750842, 750843, 750844, 750845, 750846 & 750847

REVISIONS						GEORGE C. NOON, P.E. P.E. LICENSE NUMBER 57854 DEWBERRY BOWYER-SINGLETON 520 SOUTH MAGNOLIA AVENUE ORLANDO, FL 32801 CERTIFICATE OF AUTHORIZATION 8794	DRAWN BY:	CENTRAL FLORIDA EXPRESSWAY AUTHORITY			SHEET TITLE:	REF. DWG. NO.
DATE	BY	DESCRIPTION	DATE	BY	DESCRIPTION		CHECKED BY:	ROAD NO.	COUNTY	FINANCIAL PROJECT ID	PROJECT NAME:	SHEET NO.
							SR 429	ORANGE	429-203	SR 429 (WEKIVA PARKWAY)	AP-17	

MEDALLION PLACEMENT NOTES

ELEVATION - RIGHT SIDE COLUMN: SR 429 CUSTOM MEDALLION
 ELEVATION - LEFT SIDE COLUMN: OPTIONAL CFX LOGO CUSTOM MEDALLION
 UNDERBRIDGE ELEVATION - BOTH COLUMNS: NO CUSTOM MEDALLION

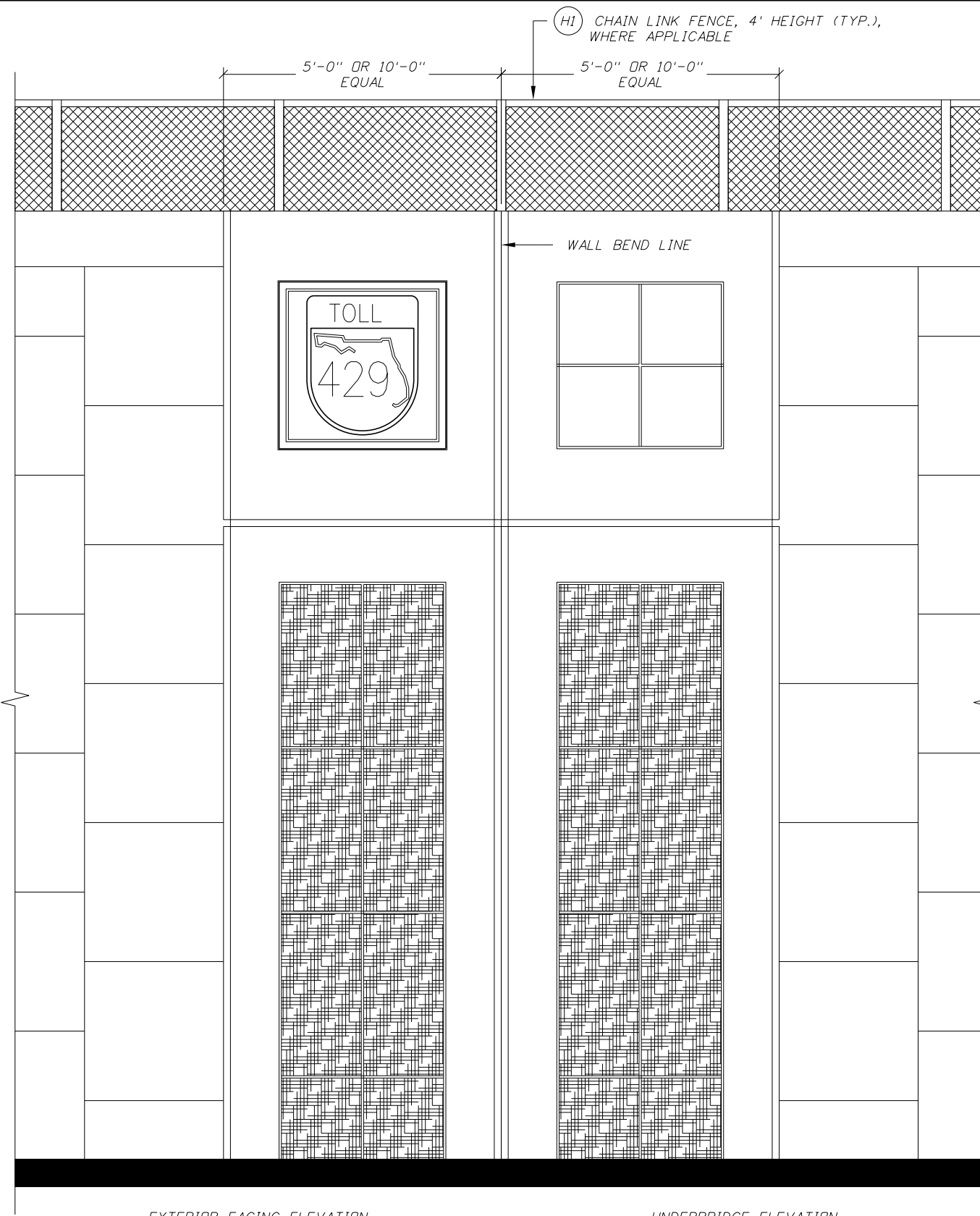


EXTERIOR FACING ELEVATION

UNDERBRIDGE ELEVATION

COLUMN ELEVATION AT BRIDGE END BENT (TYP.)

** ELEVATIONS SHOWN ARE SCHEMATICS FOR ILLUSTRATIVE PURPOSES ONLY.
 REFER TO SHEETS AP-19 AND AP-20 FOR SPECIFIC COLUMN DIMENSIONS AND REQUIREMENTS.



EXTERIOR FACING ELEVATION

UNDERBRIDGE ELEVATION

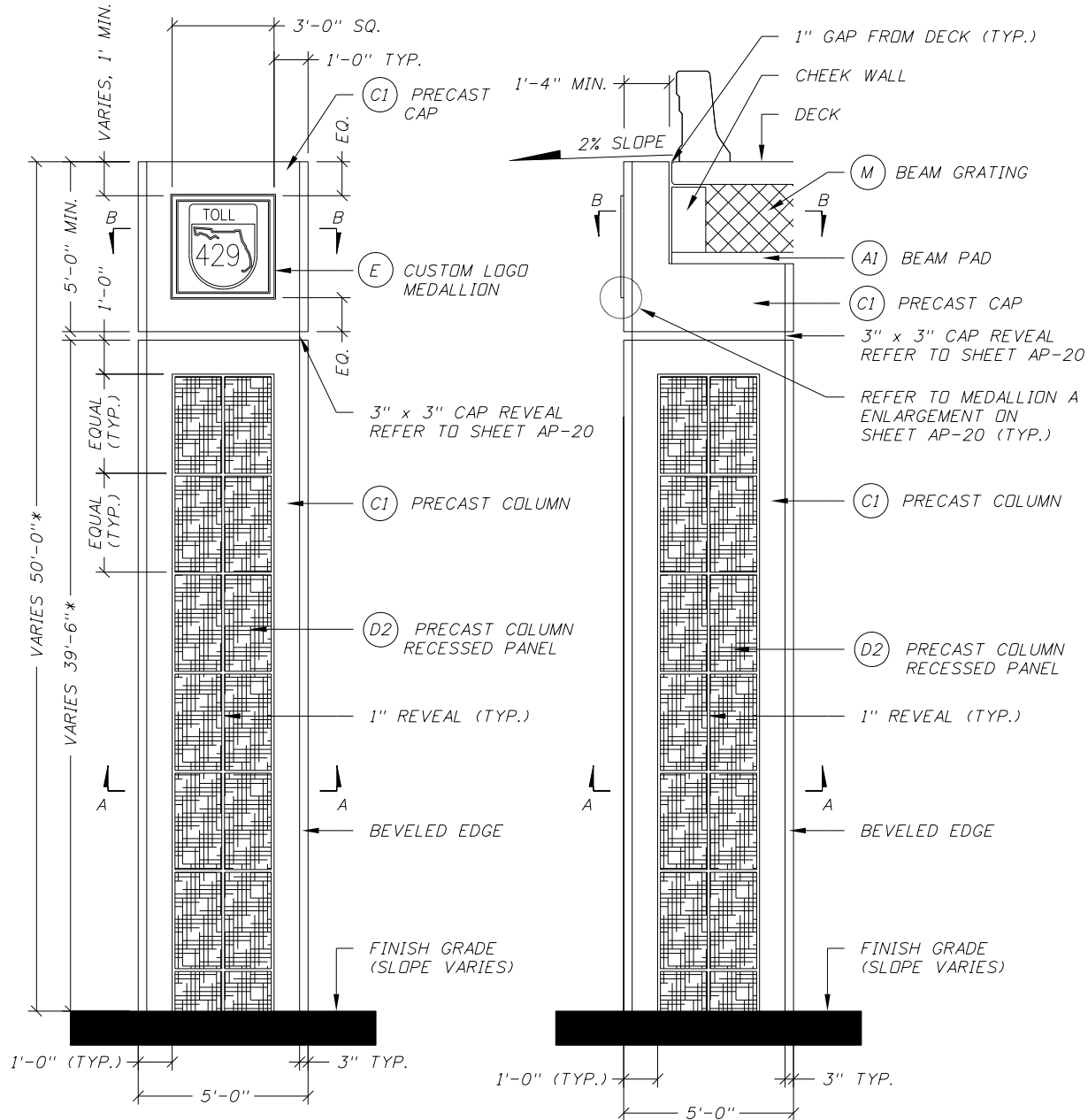
COLUMN ELEVATION ON MSE/RETAINING WALL (TYP.)

** ELEVATIONS SHOWN ARE SCHEMATICS FOR ILLUSTRATIVE PURPOSES ONLY.
 REFER TO SHEETS AP-19 AND AP-20 FOR SPECIFIC COLUMN DIMENSIONS AND REQUIREMENTS.

REVISIONS						GEORGE C. NOON, P.E. P.E. LICENSE NUMBER 57854 DEWBERRY BOWYER-SINGLETON 520 SOUTH MAGNOLIA AVENUE ORLANDO, FL 32801 CERTIFICATE OF AUTHORIZATION 8794	DRAWN BY: CHECKED BY: DESIGNED BY: CHECKED BY:	CENTRAL FLORIDA EXPRESSWAY AUTHORITY			SHEET TITLE: PRECAST COLUMN SCHEMATICS SR 429 (WEKIVA PARKWAY)	REF. DWG. NO.
DATE	BY	DESCRIPTION	DATE	BY	DESCRIPTION			ROAD NO.	COUNTY	FINANCIAL PROJECT ID		SHEET NO.
								SR 429	ORANGE	429-203		AP-18

NOTES

1. REFER TO STRUCTURE PLANS FOR BEAM TYPES.
2. REFER TO SHEETS AP-01, AP-02, AP-04, AND AP-05 FOR COATING REQUIREMENTS.
3. REFER TO SHEET AP-20 FOR SECTIONS AND ENLARGEMENTS.



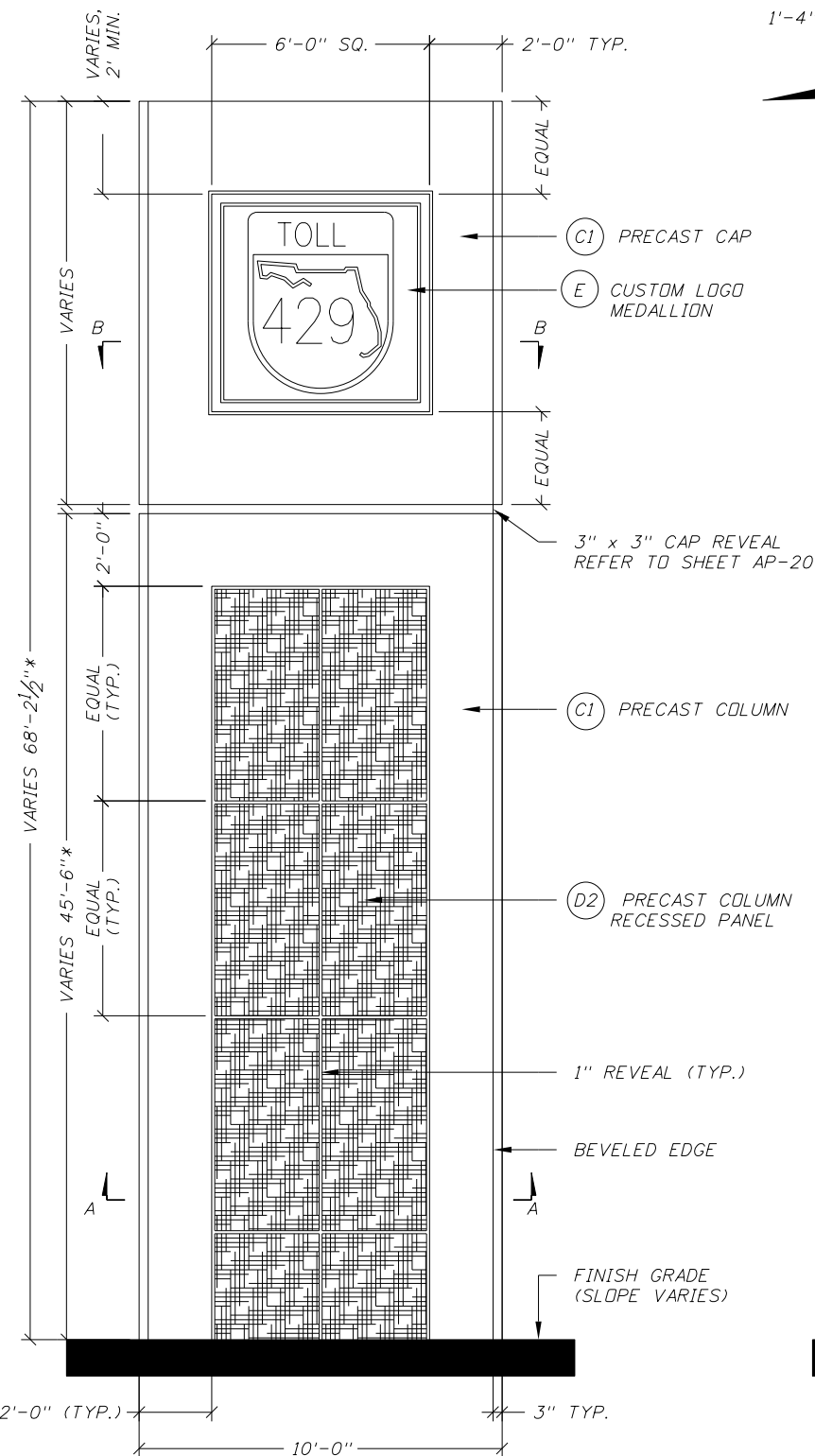
ELEVATION

UNDERBRIDGE ELEVATION

PRECAST COLUMN - 5' WIDTH

** FOR BRIDGE HEIGHTS 25' OR LESS

** REFER TO ENGINEERING PLANS FOR SPECIFIC DIMENSIONS AND REQUIREMENTS.

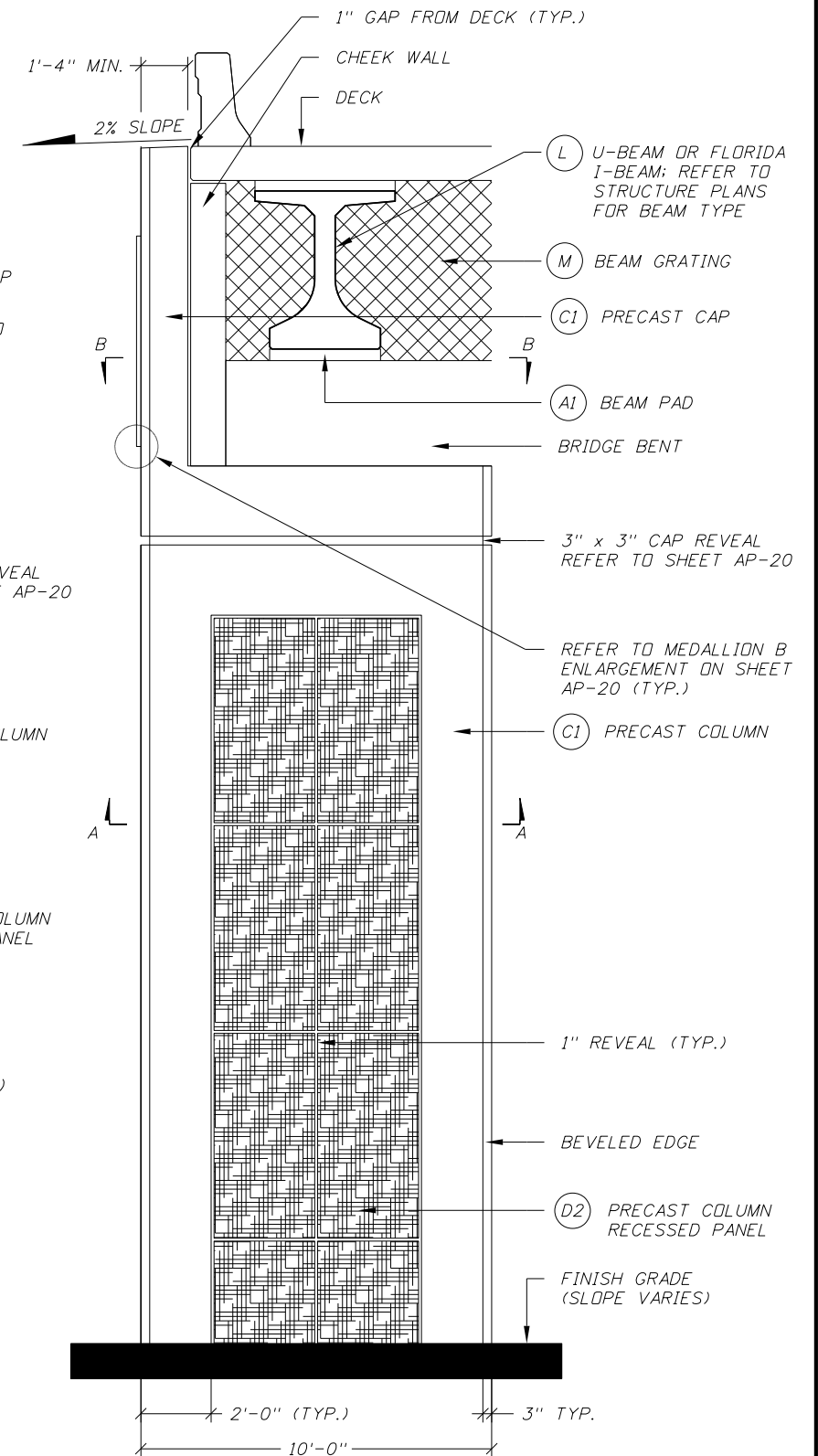


ELEVATION

UNDERBRIDGE ELEVATION

PRECAST COLUMN - 10' WIDTH

** FOR BRIDGE HEIGHTS OVER 25'

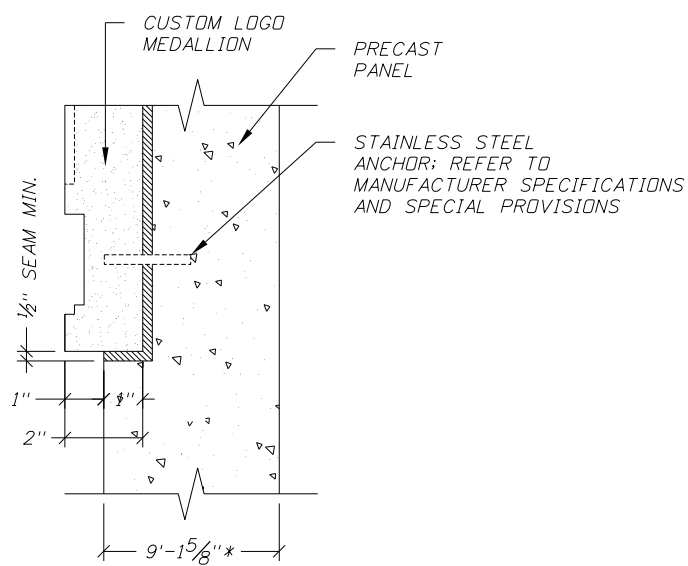


REVISIONS					
DATE	BY	DESCRIPTION	DATE	BY	DESCRIPTION

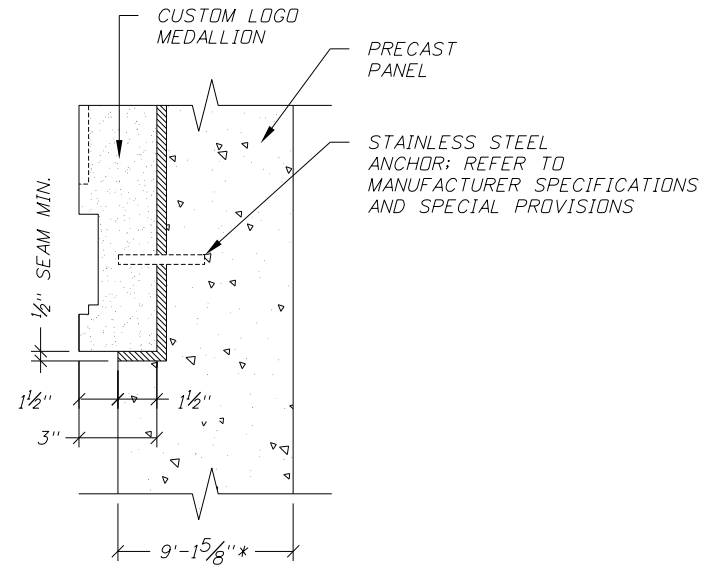
GEORGE C. NOON, P.E.
 P.E. LICENSE NUMBER 57854
 DEWBERRY | BOWYER-SINGLETON
 520 SOUTH MAGNOLIA AVENUE
 ORLANDO, FL 32801
 CERTIFICATE OF AUTHORIZATION 8794

DRAWN BY:	CENTRAL FLORIDA EXPRESSWAY AUTHORITY		
CHECKED BY:	ROAD NO.	COUNTY	FINANCIAL PROJECT ID
DESIGNED BY:	SR 429	ORANGE	429-203
CHECKED BY:			

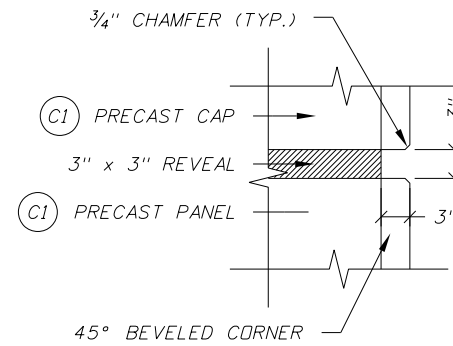
SHEET TITLE:	PRECAST COLUMN SCHEMATICS	REF. DWG. NO.	
PROJECT NAME:	SR 429 (WEKIVA PARKWAY)	SHEET NO.	AP-19



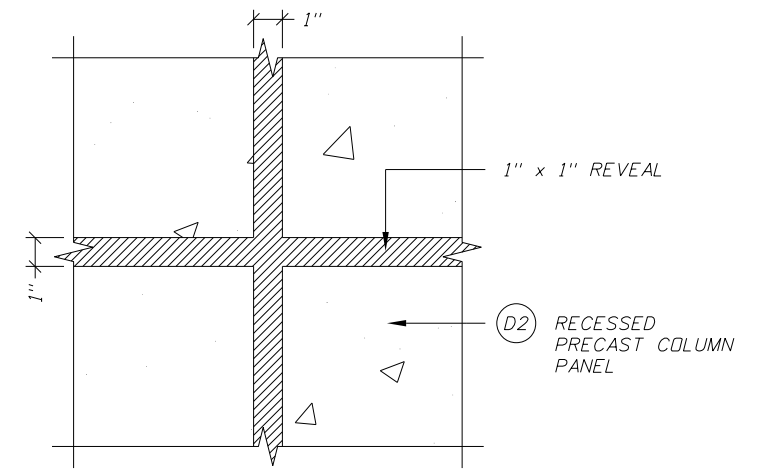
MEDALLION A ENLARGEMENT



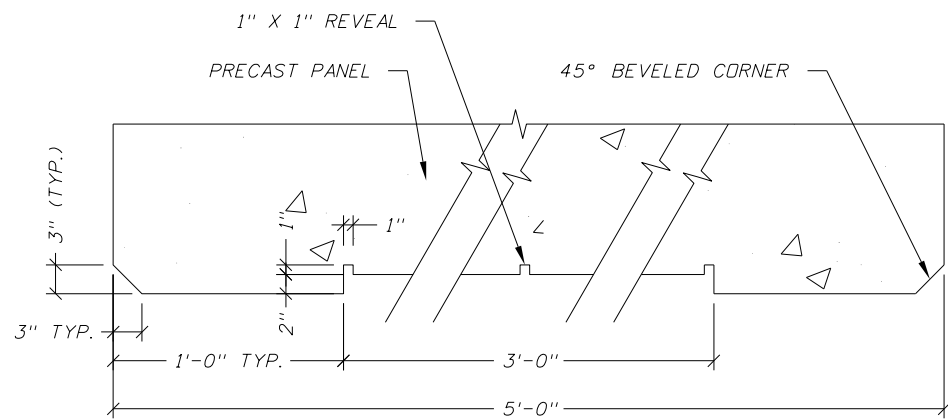
MEDALLION B ENLARGEMENT



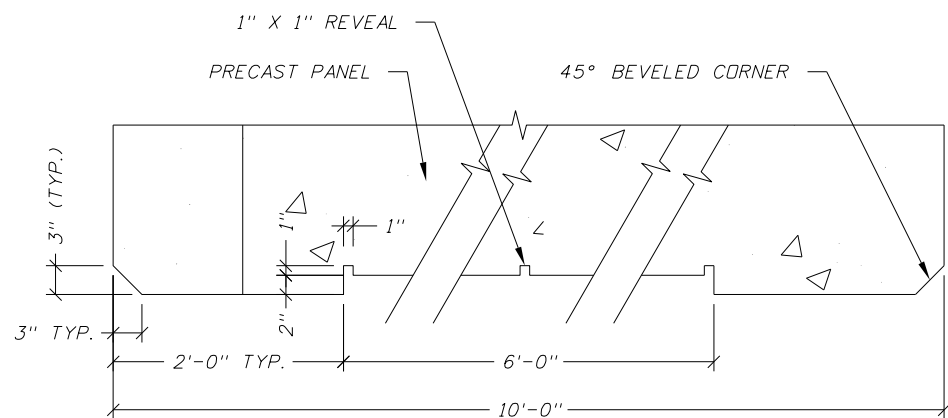
CAP REVEAL



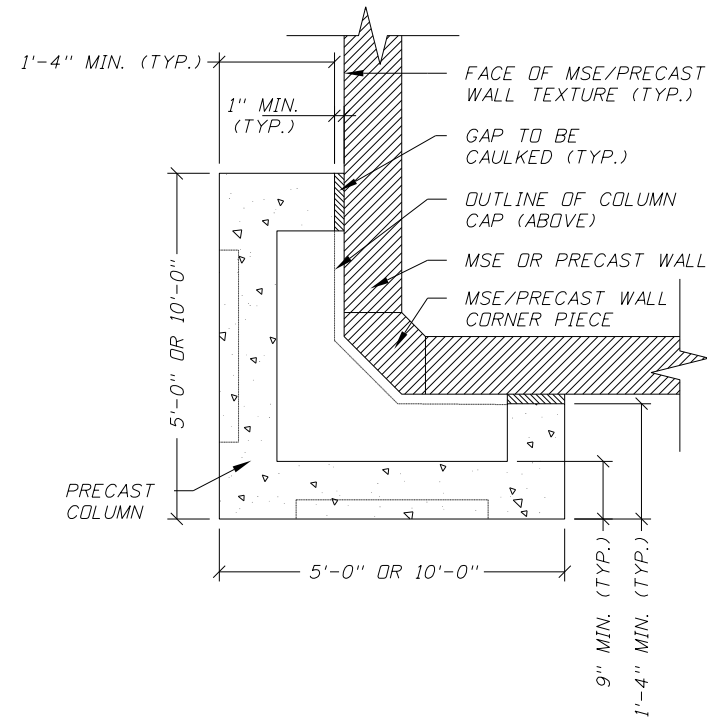
1" REVEAL



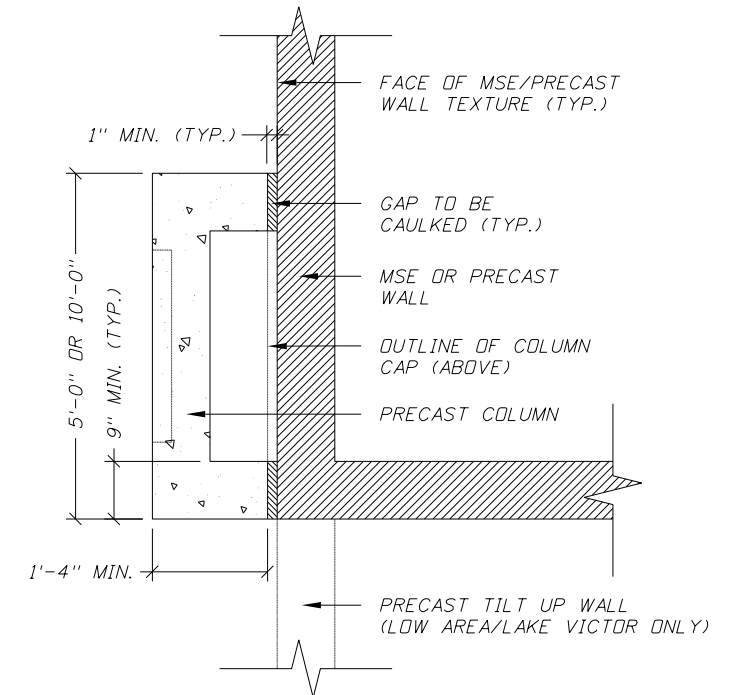
SECTION A-A - 5' WIDTH



SECTION A-A - 10' WIDTH



VIEW B-B - TYPICAL



VIEW B-B - SINGLE SIDED

NOTES

1. REFER TO SHEETS AP-01, AP-02, AP-04, AND AP-05 FOR ADDITIONAL REQUIREMENTS.
2. REFER TO SPECIAL PROVISIONS AND SHEET AP-08 FOR MEDALLION DIMENSIONS AND REQUIREMENTS.

** REFER TO ENGINEERING PLANS FOR SPECIFIC DIMENSIONS AND REQUIREMENTS.

REVISIONS						GEORGE C. NOON, P.E. P.E. LICENSE NUMBER 57854 DEWBERRY BOWYER-SINGLETON 520 SOUTH MAGNOLIA AVENUE ORLANDO, FL 32801 CERTIFICATE OF AUTHORIZATION 8794	DRAWN BY: CHECKED BY: DESIGNED BY: CHECKED BY:	CENTRAL FLORIDA EXPRESSWAY AUTHORITY			SHEET TITLE: PRECAST COLUMN SCHEMATICS PROJECT NAME: SR 429 (WEKIVA PARKWAY)	REF. DWG. NO. SHEET NO. AP - 20
DATE	BY	DESCRIPTION	DATE	BY	DESCRIPTION			ROAD NO.	COUNTY	FINANCIAL PROJECT ID		
								SR 429	ORANGE	429-203		