

**CENTRAL
FLORIDA
EXPRESSWAY
AUTHORITY**

CONCEPT, FEASIBILITY & MOBILITY STUDY OF THE NORTHEAST CONNECTOR EXPRESSWAY EXTENSION

**ENVIRONMENTAL ADVISORY GROUP
Kick-Off Meeting
June 26, 2018**



Project No. 599-215
Contract No. 001209

Concept, Feasibility & Mobility Study

This meeting, project, or study is being conducted without regard to race, color, national origin, age, sex, religion, disability or family status. Persons wishing to express their concerns relative to compliance by the Central Florida Expressway Authority (CFX) with Title VI may do so by contacting:

Joseph Passiatore
CFX General Counsel
4974 ORL Tower Road
Orlando, FL 32807
407-690-5000

Joe.Passiatore@CFXWay.com

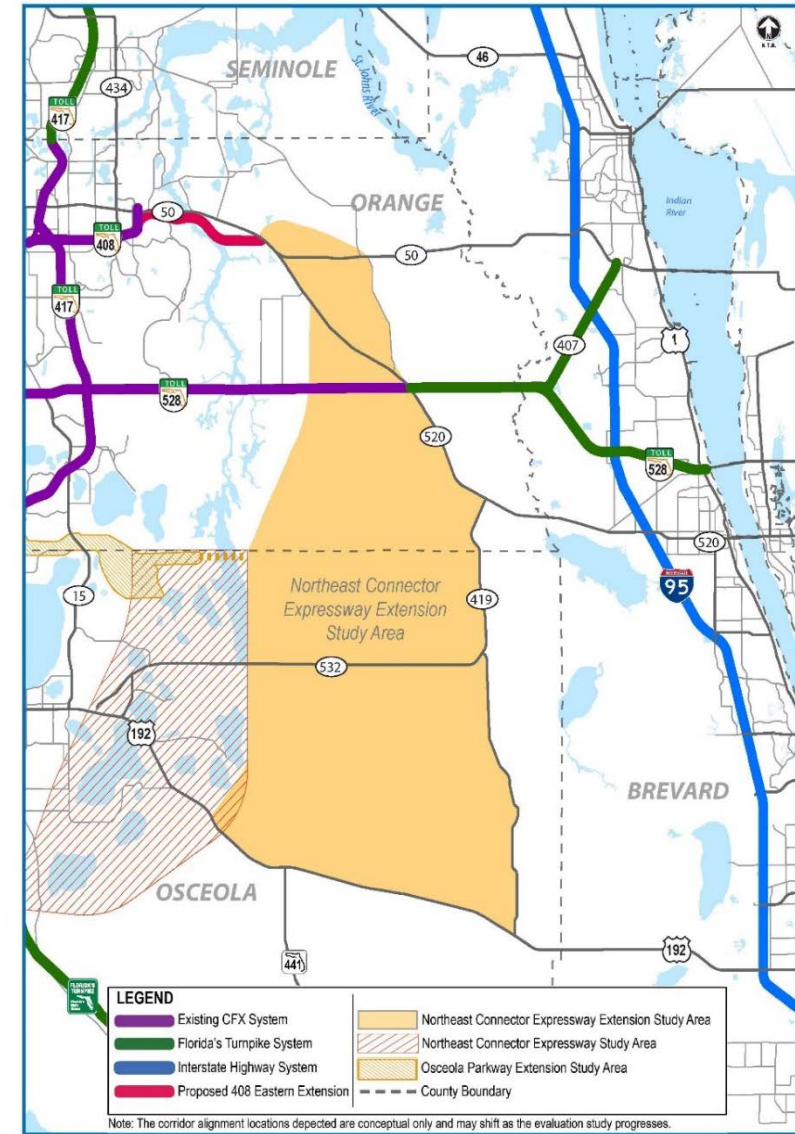
All inquiries or complaints will be handled according to CFX procedure and in a prompt and courteous manner.

Agenda

- ◆ Introductions
- ◆ Overview
- ◆ Background and History
- ◆ Regional Context
- ◆ Study Status to Date



Study Overview



Study Process

Data Collection

**Review Existing
Plans**

**Stakeholder and
Public Input**

**Develop and Evaluate
Alternatives**

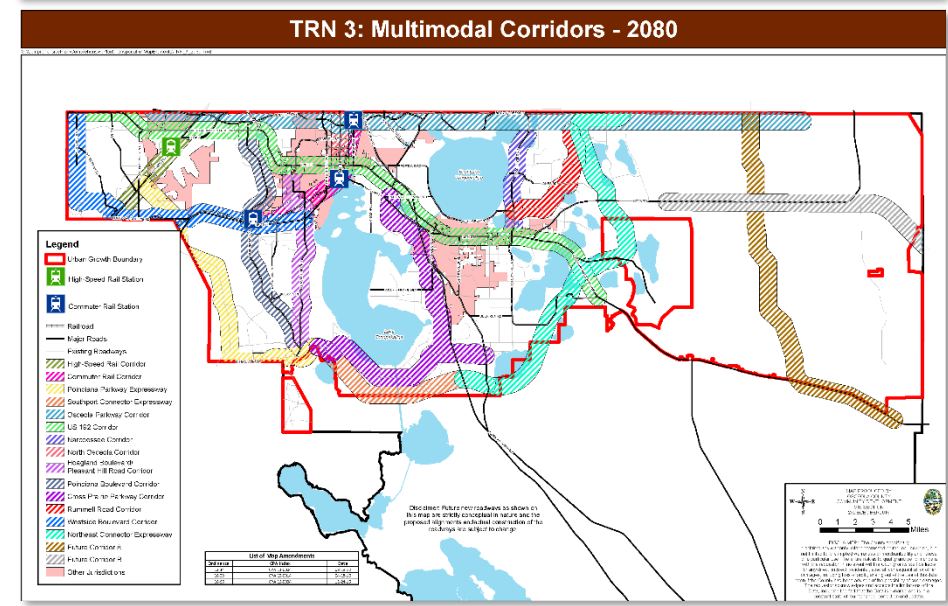
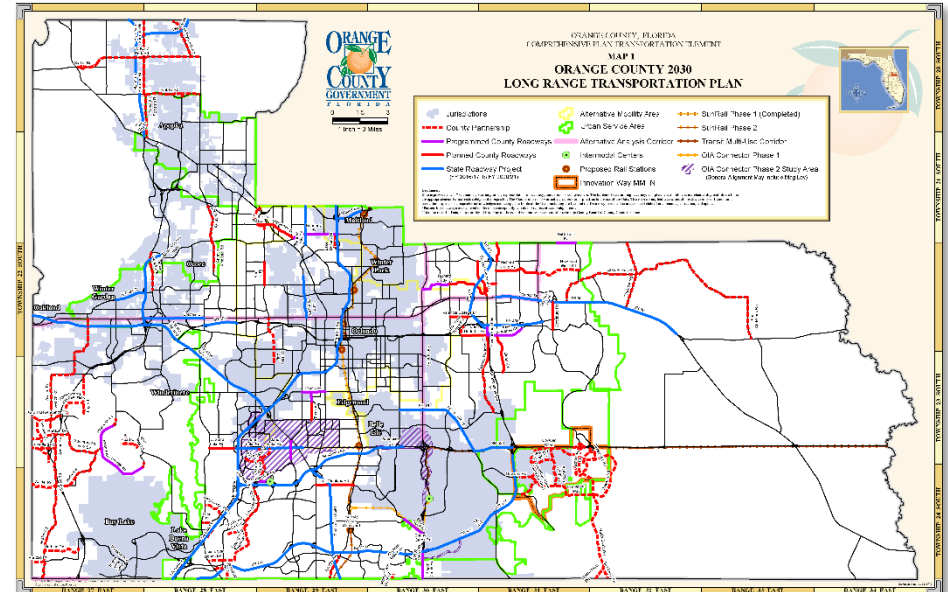
**Concept and
Feasibility Report**



Purpose and Need

- ◆ Traditional factors:
 - Capacity and mobility needs
 - Safety
 - Systems continuity
 - Consistency with adopted plans and programs
 - Social demands and economic development

- ◆ Unique factors:
 - Study area largely undeveloped
 - Year 2080 plan for land-use, transportation and conservation in Osceola County
 - Zonal structure and socio-economic data not well-defined
 - Land-use restrictions/limitations east of Econ River in Orange County



Project Goals

IMPROVE

connections to east-west corridors

- SR 408 Eastern Extension
- SR 520
- SR 528
- US 192

ENHANCE

mobility of growing population and economy

- Long-term planning efforts
- ECFC Task Force
- Northeast District
- North Ranch Sector Plan

PROVIDE

for incorporation of transit options

- Local, state and regional plans
 - CFX Master Plan
 - ECFC Task Force
 - Osceola County
 - MPO Alliance
- Close coordination with future land-use development

PROMOTE

regional north-south connectivity

- Current and long-term
 - OCX Master Plan
 - Northeast Connector Expressway
 - Future corridors

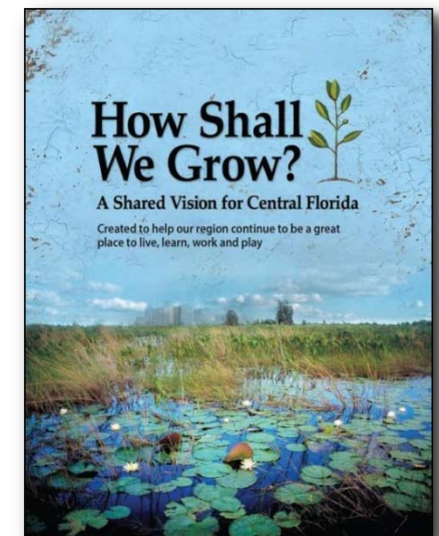
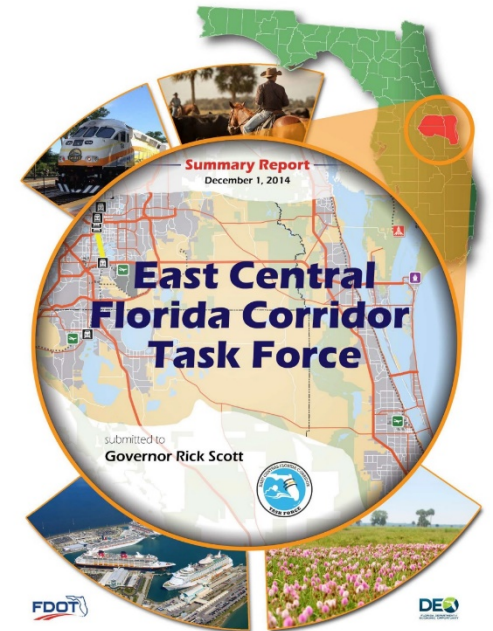
Project Schedule

Task/Activity	2018												2019			
	Feb	Mar	Apr	May	Jun	Jul	Aug	Sept	Oct	Nov	Dec	Jan	Feb	Mar	Apr	
Notice to Proceed	★															
Review Existing Studies/Reports																
Additional Data Collection/Analysis																
EAG Project Kickoff Meeting					★											
Needs Analysis																
Develop Alternatives																
Concept, Feasibility and Mobility Report-Draft																
EAG Pre-Public Workshop Meeting																
Refine Alternatives																
Public Information Workshop																
Concept, Feasibility and Mobility Report-Final																
CFX Board Review																
Study Complete																

- ◆ NTP – February 2018
- ◆ 15-Month schedule
- ◆ Stakeholder coordination
- ◆ EAG meetings
- ◆ Public Information Workshop
- ◆ Coordinate with ongoing studies

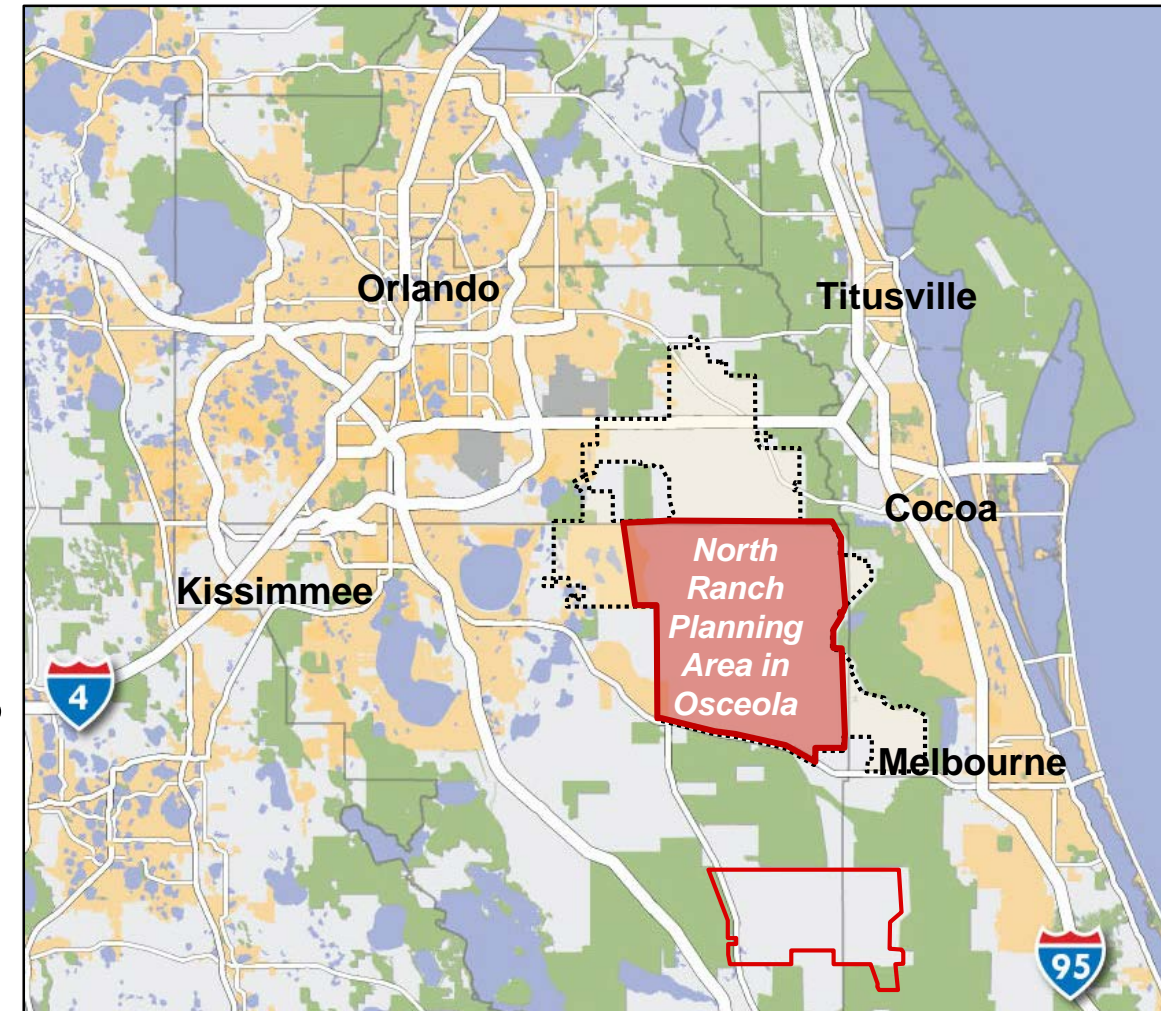
Background and History

- ◆ East Central Florida Corridors Task Force
 - Executive order by Governor Scott
 - Advance statewide corridor initiative in East Central Florida
 - Collaborative effort between FDOT and regional partners
 - Envision, plan and expand major corridors over the next 50 years
- ◆ Relationship to How Shall We Grow? (HSWG)
- ◆ Develop corridors in phases:
 - Expand existing corridors such as SR 50, SR 528, SR 520 and US 192
 - Develop new east-west corridors
 - Develop new north-south corridors
- ◆ Potential growth in the region centered on Deseret Ranch



Background and History

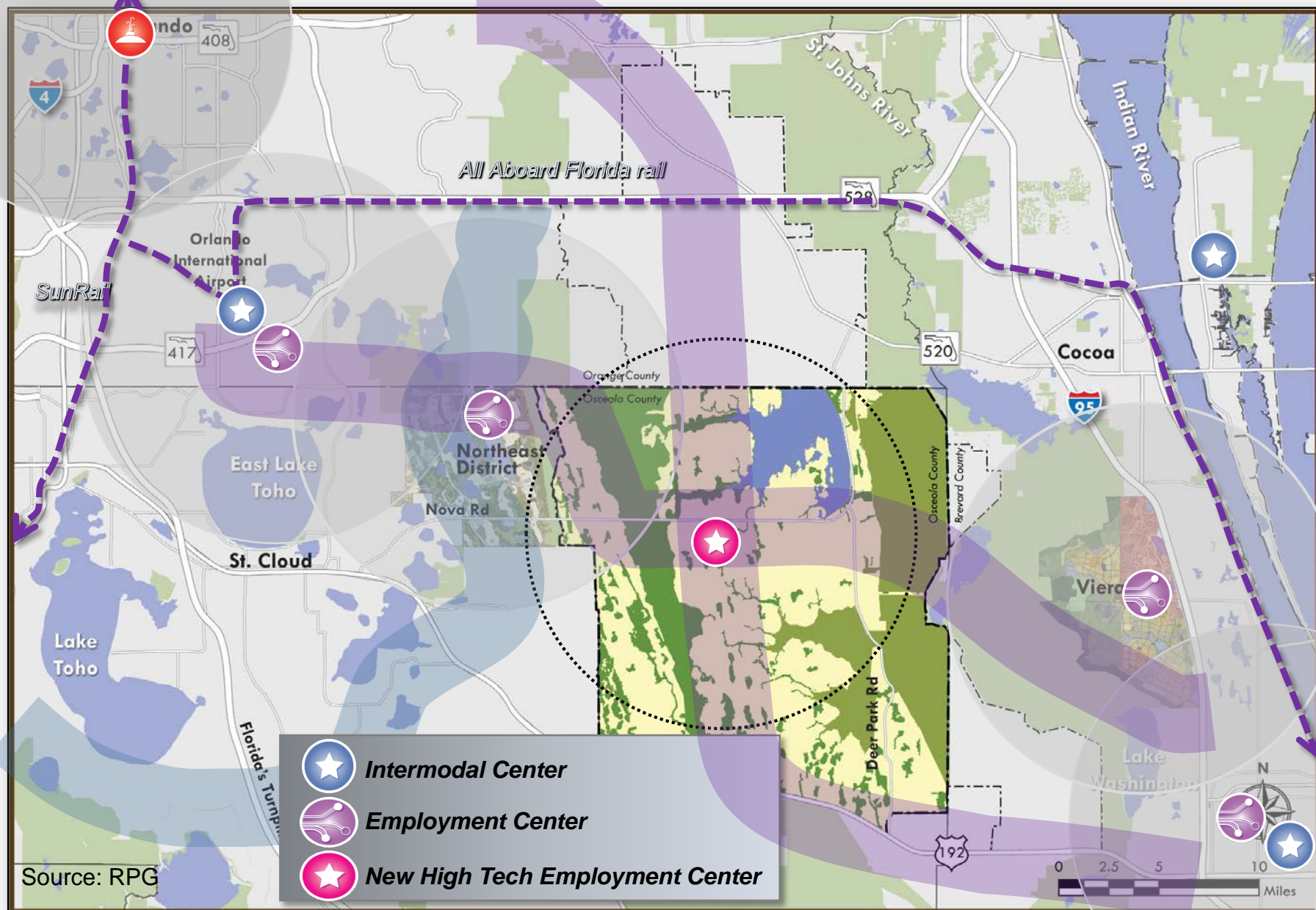
- ◆ Deseret Ranch
 - Nearly 300,000 acres in Orange, Osceola and Brevard counties
 - Agricultural use focused on cattle
- ◆ North Ranch Sector Plan
 - Adopted September 2015
 - Included in Osceola County Comp Plan
 - Land planning for 133,000 acres
 - Nearly 500,000 people in year 2080
 - Development anticipated to begin after 2045
- ◆ Directly influenced HSWG, CFWI and ECFC Task Force



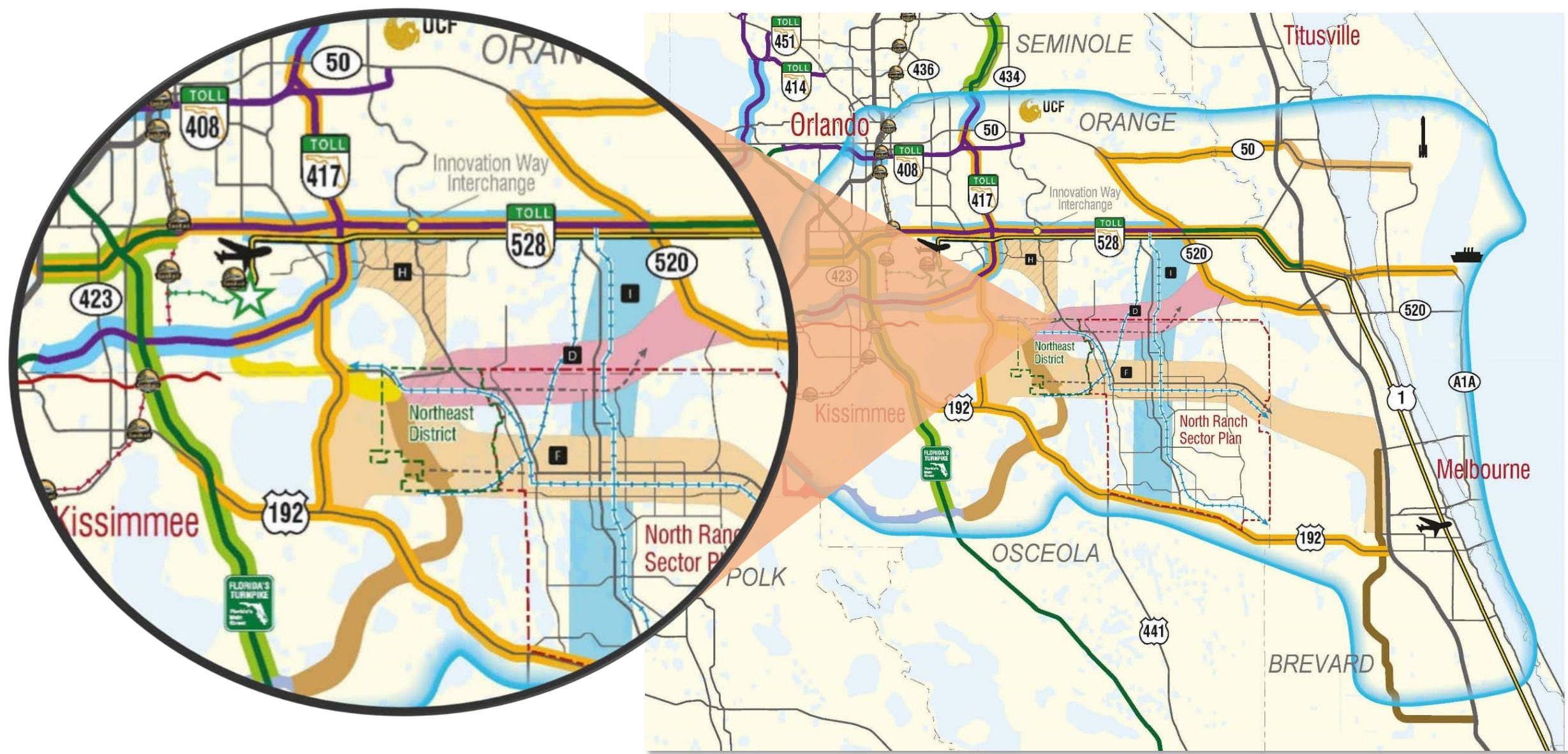
Source: RPG

Regional Context

- ◆ Regional building blocks – existing and planned centers and commute sheds
- ◆ Potential center and commute shed
- ◆ Existing and planned rail alignments
- ◆ Planned expressways
- ◆ Potential multi-modal corridors

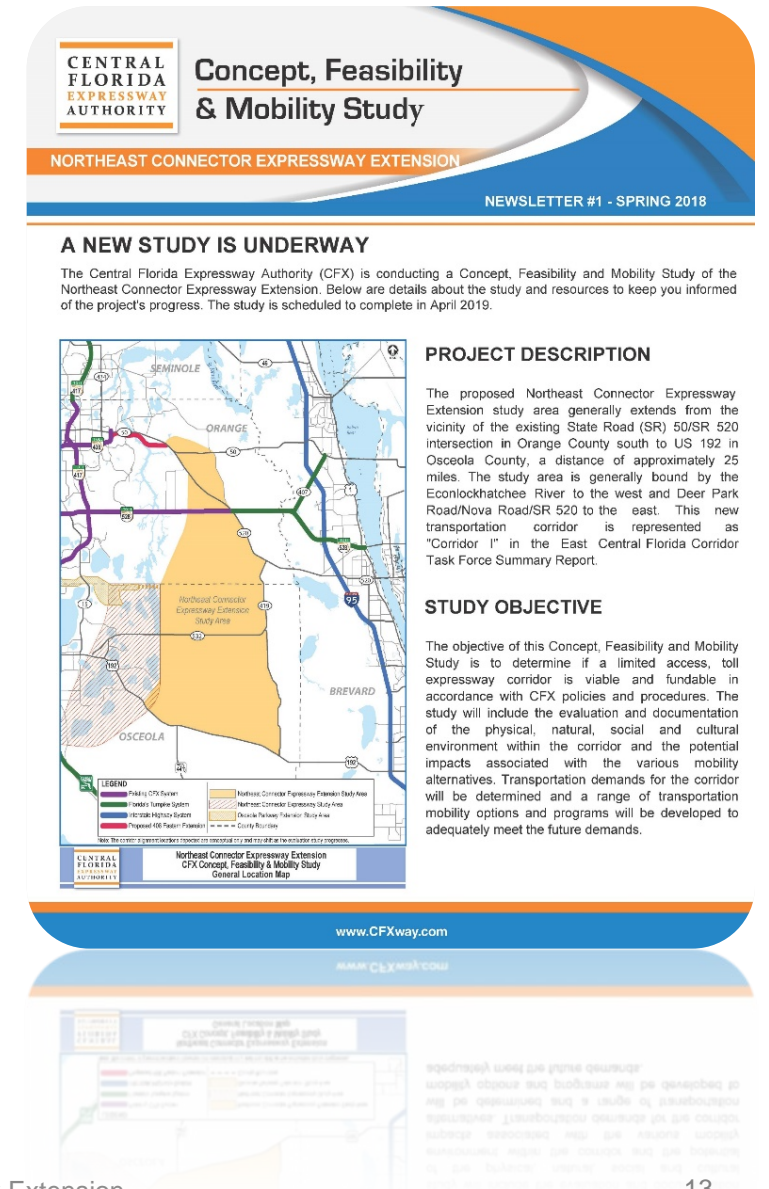


Regional Context



Project Status

- ◆ Document Reviews ✓
- ◆ Public Involvement Plan ✓
 - Kickoff letters, materials, website ✓
 - Property owner list ✓
- ◆ Project Team Bi-Weekly Meetings *On going*
- ◆ Stakeholder Meetings *On going*
 - Osceola County ✓
 - Brevard County ✓
 - Orange County ✓
- ◆ Draft Purpose and Need *On going*
- ◆ Environmental Data Collection ✓
- ◆ Preliminary Corridor Alternative(s) *On going*
- ◆ Concept Development *On going*



Environmental Considerations

- ◆ Corridor-level screening with desktop analysis and limited field reconnaissance
 - To be evaluated in more detail if the project moves into a PD&E Study
- ◆ Identify natural resources
 - Wetlands, listed species, public and conservation lands, wildlife corridors
- ◆ Identify potential fatal flaws

STATEWIDE

- Florida Forever projects (FNAI)
- Florida Managed Areas (FNAI)
- Focal Natural Communities (FNAI)
- Cooperative Land Cover (FNAI)
- Topography (FGDL)
- Mitigation banks (FGDL)
- Ecological Regions of North America (USEPA)
- Outstanding Florida Waters (FDEP)
- Wildlife Observation database (FWC)
- Breeding Bird Atlas (FWC)
- Bald eagle nests (FWC)
- Florida black bear records (FWC)
- Florida scrub-jay territories (FWC)
- Wood stork colonies (USFWS)
- Species richness for rare & imperiled wildlife (FWC)
- Potential habitat models for rare & imperiled wildlife (FWC)
- Biodiversity hot spots (FWC)
- Strategic Habitat Conservation Areas (Cox et al. 1994)
- CLIP (FNAI, USFWS)
- Critical Linkages (FEGN)
- Priority wetlands for listed species of wetland-dependent wildlife (FWC)
- Integrated Wildlife Habitat Ranking System (FWC)
- Land-Use Intensity Index (FWC)

REGIONAL

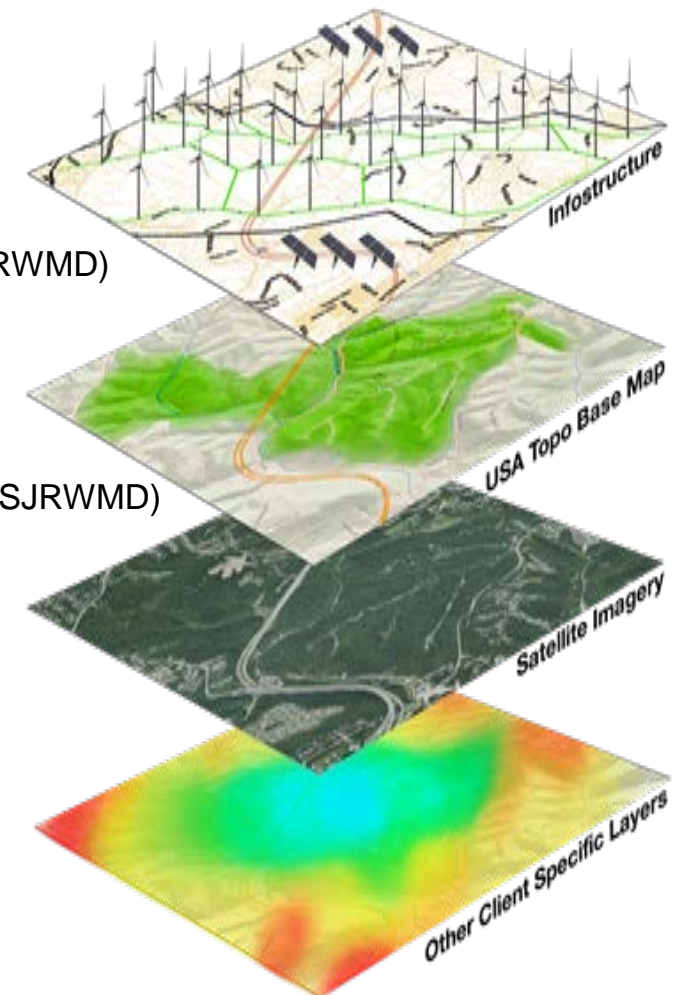
- Drainage basins (FDEP)
- Watersheds (FDEP)
- 2004, 2008 land-use/land cover (SJRWMD)
- Regulatory easements (SJRWMD)
- MyRegion Conservation Plan

LOCAL

- ELSP (Orange County)
- Econlockhatchee regulatory buffers (SJRWMD)
- North Ranch Sector Plan

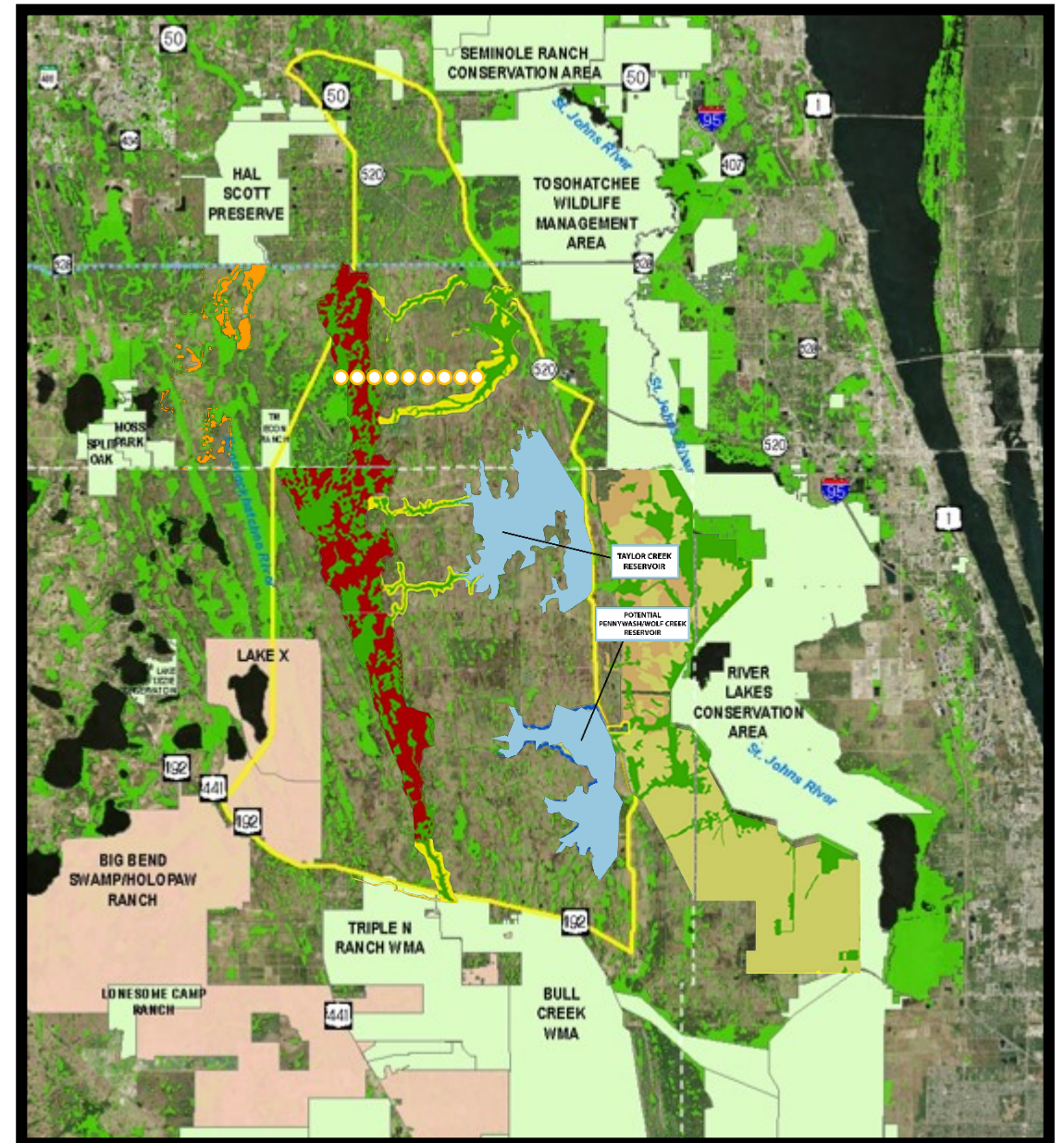
SITE SPECIFIC

- Field Reconnaissance
- Photo-interpretation
- T&E occurrence records

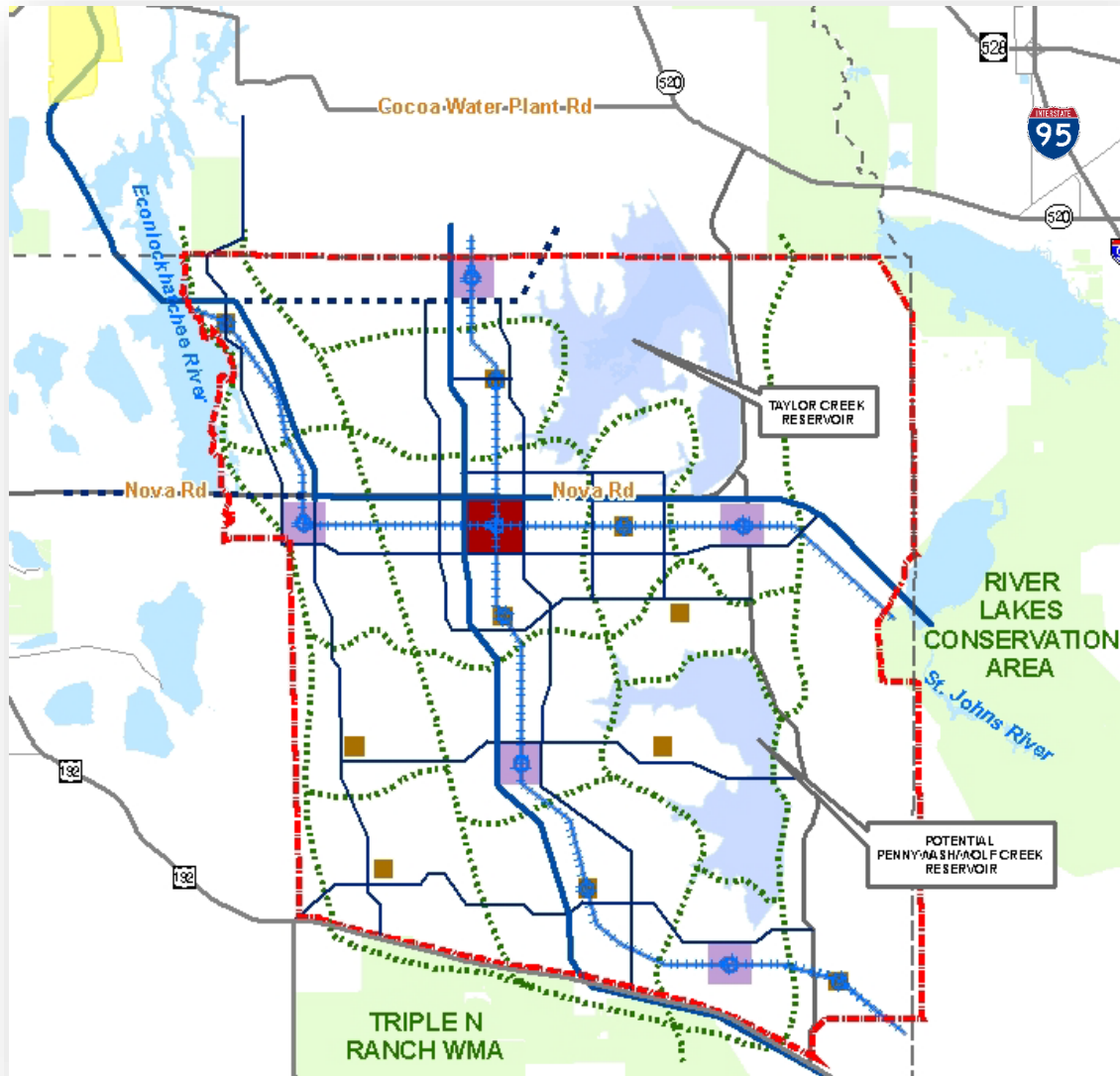


Environmental Framework

- ◆ Public lands, mitigation banks
- ◆ City of Cocoa wellfield
- ◆ Regional conservation plan
- ◆ Wetlands
- ◆ Environmental Land Stewardship Program, Econ protections
- ◆ Reservoirs
- ◆ Wildlife corridors
- ◆ Econ wetland/upland mosaic
- ◆ Landscape linkages



North Ranch Sector Plan

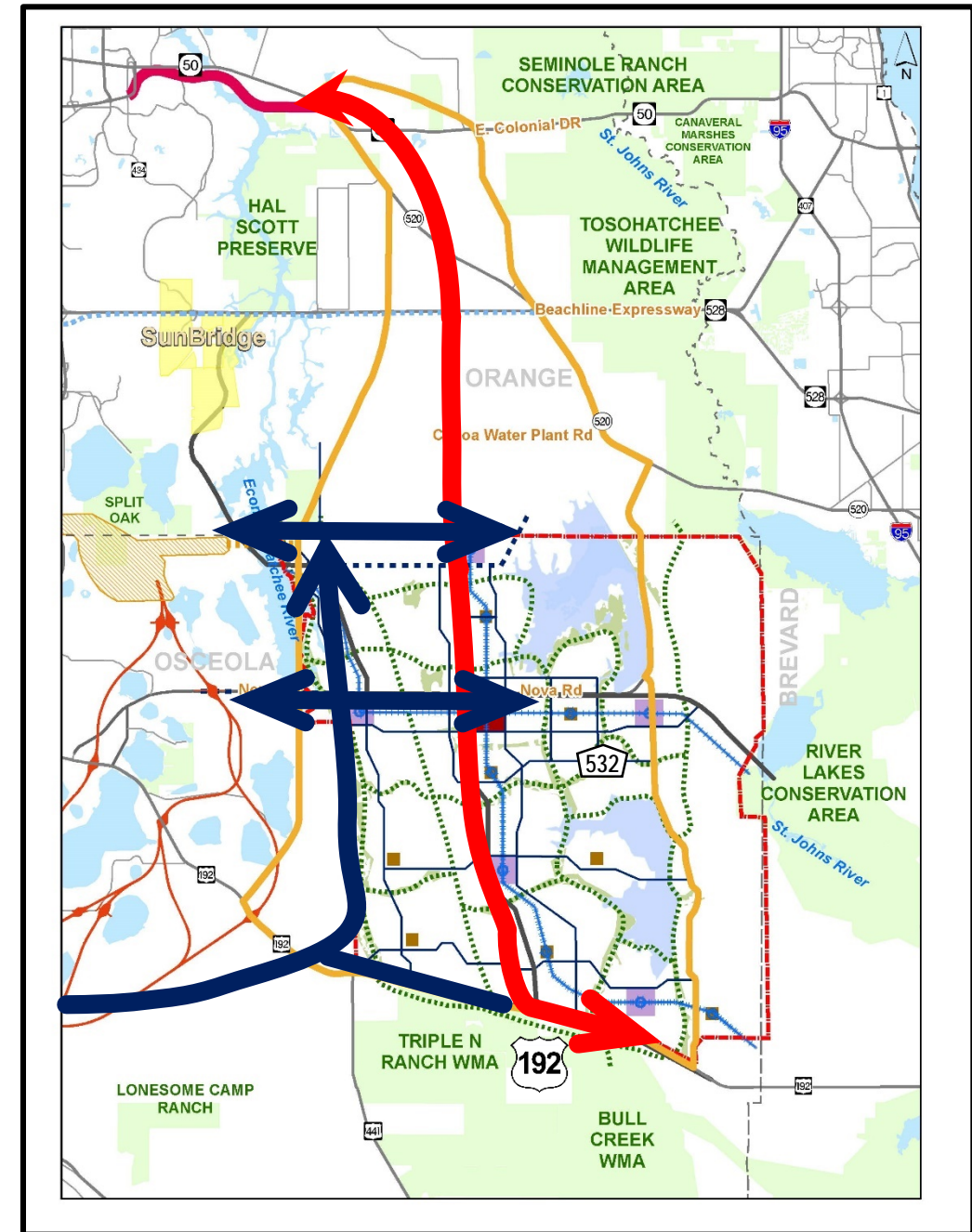


Adopted by Osceola County

- ◆ September 21, 2015
- ◆ Ordinance No. 2015-73
- ◆ Comp Plan Amendment CPA14-005
- ◆ Year 2080 planning horizon
 - Land use
 - Transportation
 - Environmental conservation
- ◆ Additional 500,000 residents

Corridor Options

- ◆ North Ranch Corridor
- ◆ Task Force “Corridor I”
- ◆ Northern project limit
- ◆ Northeast Connector Expressway alternative
- ◆ East-West connections



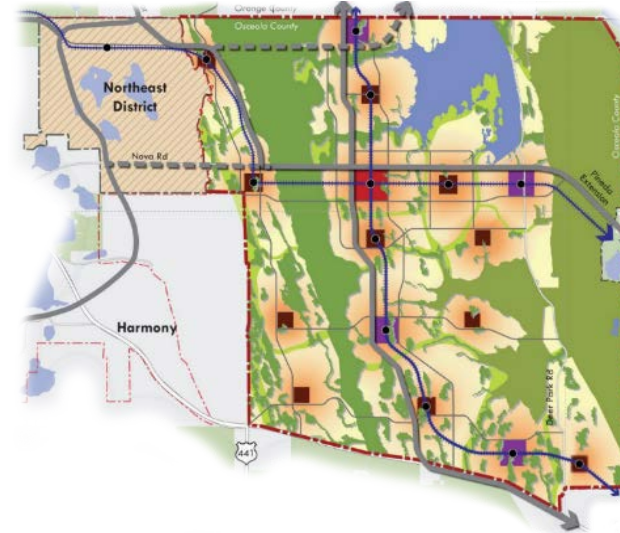
Concept Development

- ◆ Mobility program alternatives
 - Evaluate potential effects to social, natural, physical, cultural features
 - Economic and engineering feasibility
 - Mobility and capacity levels of service
- ◆ Conceptual design
 - Mainline and interchanges
 - Access requirements
 - Connections to existing and planned facilities
- ◆ Right-of-Way needs for preferred alternative
 - Foundation for potential right-of-way agreement(s)
 - Document specific corridor in long-range plans
- ◆ Coordination with:
 - Adjacent projects
 - Project stakeholders



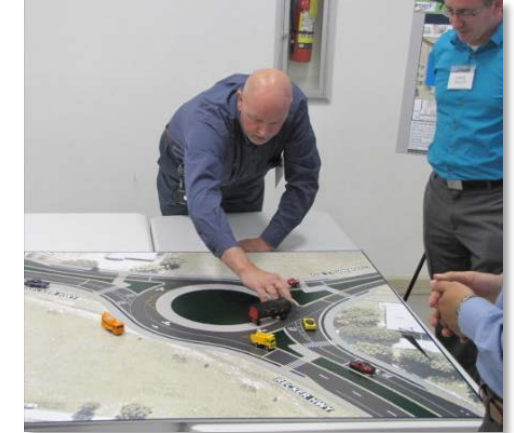
Transit Considerations

- ◆ Establish transit need
- ◆ Coordinate with regional partners
 - Central Florida MPO
 - ▶ Regional Transit Study
 - Osceola County
 - ▶ North Ranch Transit Plan
- ◆ Flexibility to plan for the future
 - Park and Ride
 - Station locations
- ◆ Consistent with CFX Master Plan



Public Involvement

- ◆ Public Involvement Program (PIP)
- ◆ Public information workshop
- ◆ Maintain mailing list databases
- ◆ Meeting materials
- ◆ Limited English Proficiency (LEP)
- ◆ Stakeholder coordination



Stakeholder Outreach

◆ Stakeholders include:

- CFX
- Orange County
- Osceola County
- Brevard County
- FDOT District 5
- MetroPlan Orlando
- Space Coast TPO
- City of Cocoa
- City of St. Cloud
- Deseret Ranches



Agency Coordination

- ◆ Regulatory agency meetings
 - Environmental Advisory Group
 - Individual meetings with agencies
- ◆ Assessment of resource impacts
- ◆ Mitigation strategies

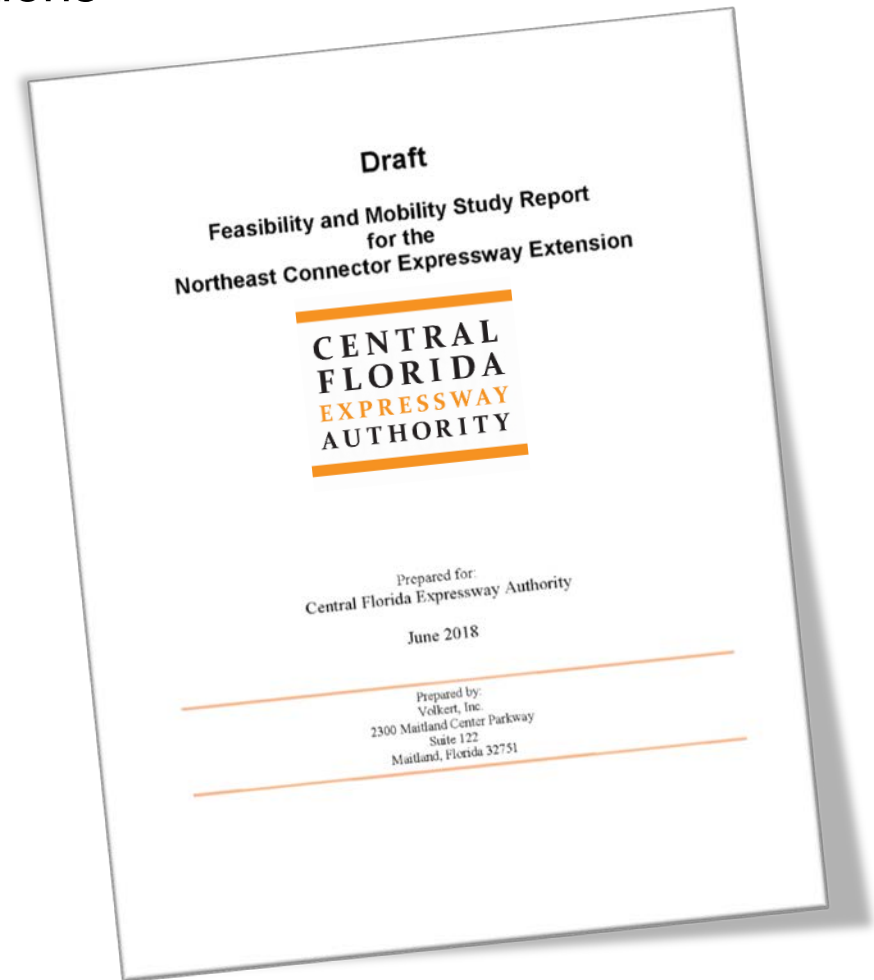


**US Army Corps
of Engineers.**



Documentation

- ◆ Concept, Feasibility and Mobility Study Report
 - Document the analysis, conclusions and recommendations
- ◆ Incorporate findings into local adopted plans
 - Orange and Osceola County Comp Plans
 - Long-Range Transportation Plans
- ◆ Background for future studies
- ◆ Foundation for future right-of-way agreement(s)
- ◆ Study complete: Early Spring 2019



Thank You Questions?

Project website:

<https://www.cfxway.com/agency-information/plans-studies/project-studies/northeast-connector-expressway-extension/>

For More Information, Contact:

Kathy Putnam

Public Involvement Coordinator

Email: conceptstudies@cfxway.com

Hotline: 407-802-3210

