



**CENTRAL
FLORIDA
EXPRESSWAY
AUTHORITY**

**FEASIBILITY / PROJECT DEVELOPMENT & ENVIRONMENT STUDY
LAKE / ORANGE COUNTY CONNECTOR (US 27 TO SR 429)
ENVIRONMENTAL ADVISORY GROUP MEETING NO. 1
JULY 30, 2018**

Title VI Compliance

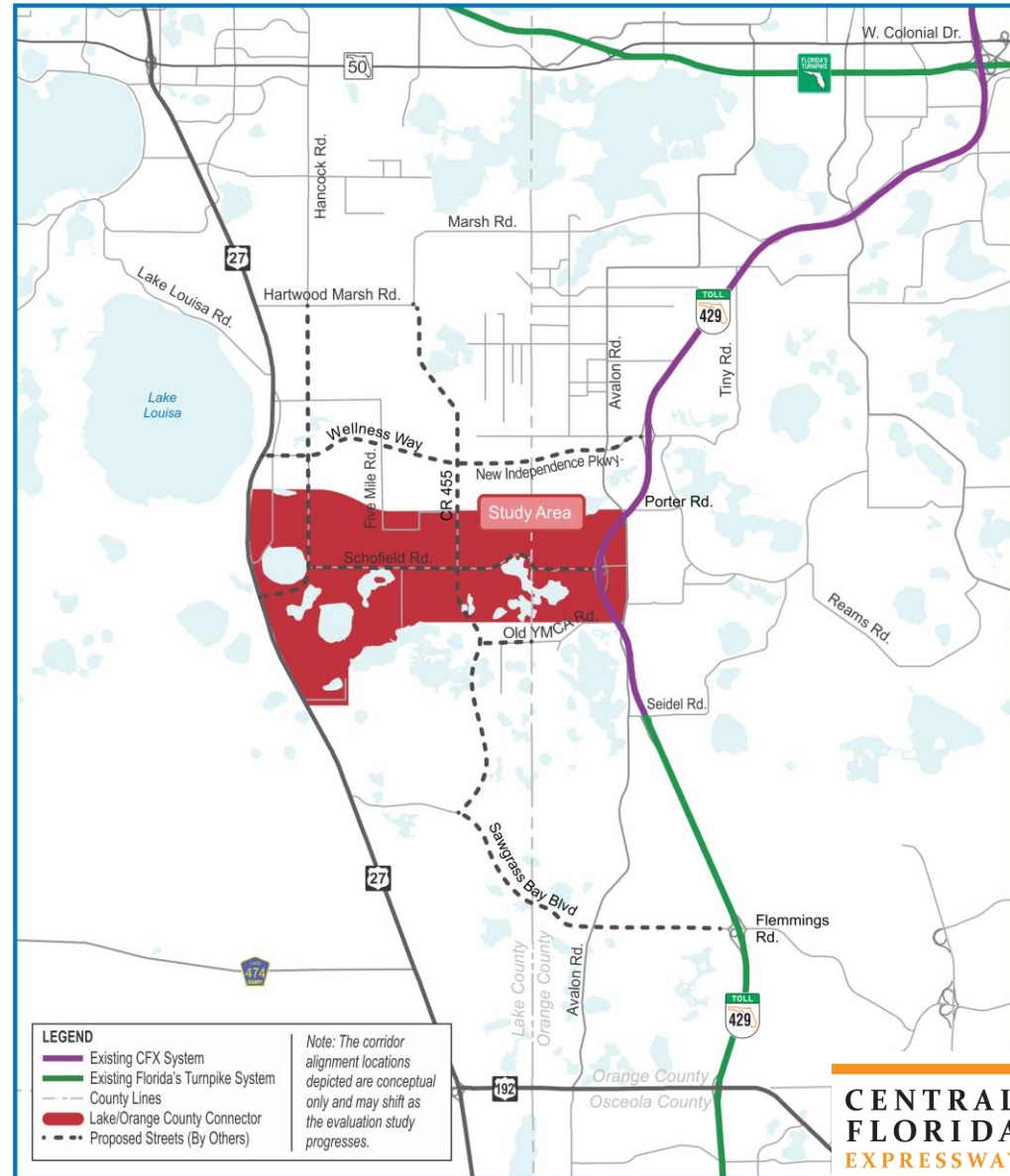
This meeting, project, or study is being conducted without regard to race, color, national origin, age, sex, religion, disability or family status. Persons wishing to express their concerns relative to compliance by the Central Florida Expressway Authority (CFX) with Title VI may do so by contacting:

Kathy Putnam
Public Involvement Coordinator
4974 ORL Tower Road
Orlando, FL 32807
407-802-3210
LakeOrangeStudy@CFXway.com

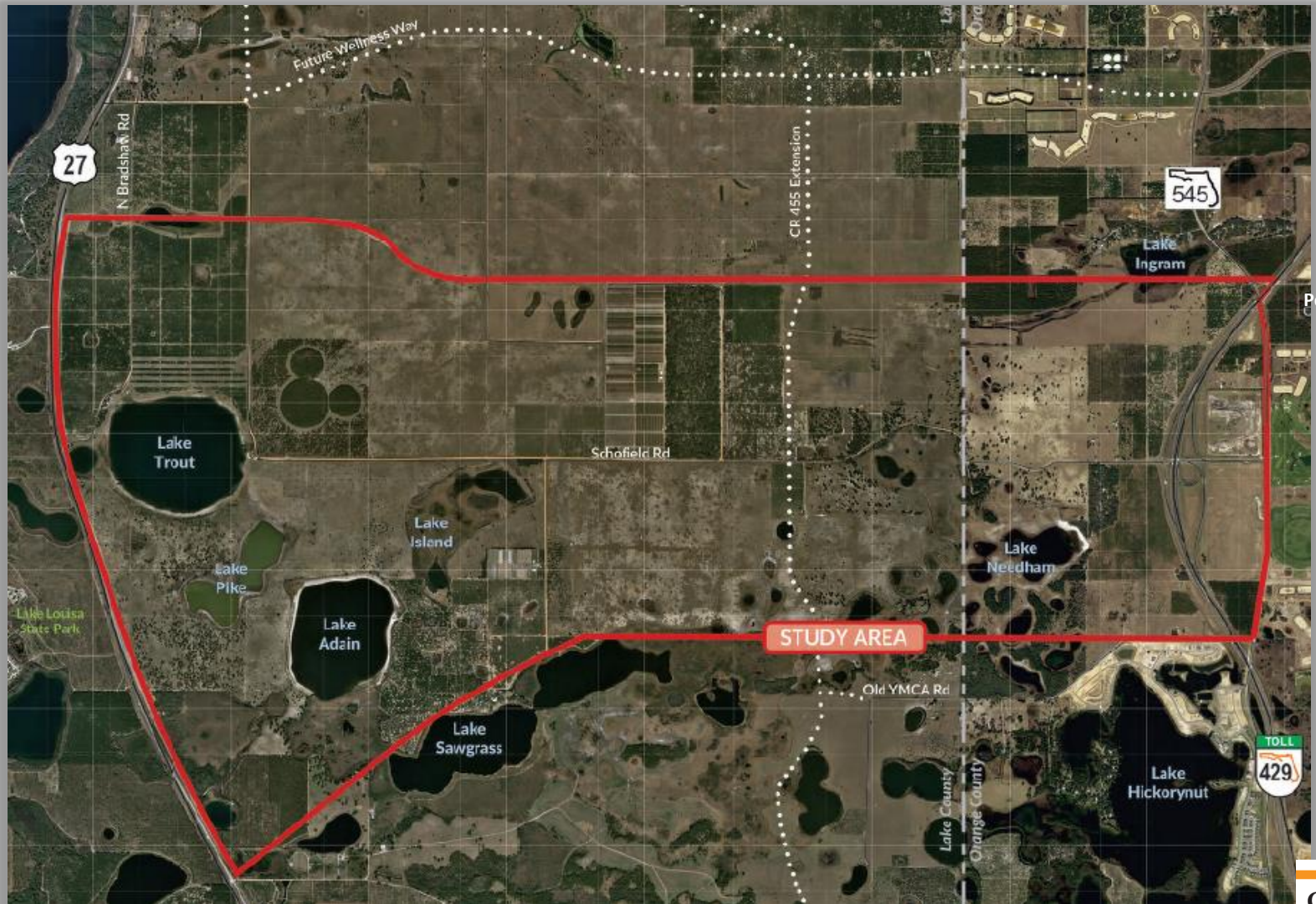
All inquiries or complaints will be handled according to CFX procedure and in a prompt and courteous manner.

Study Objective

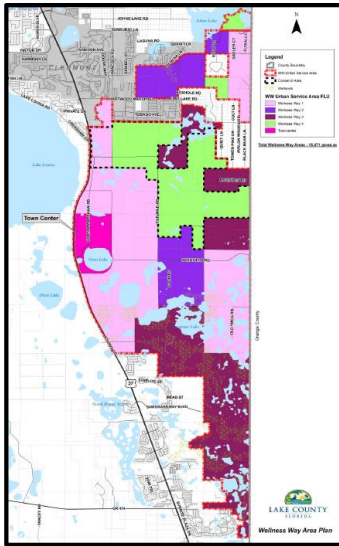
- Determine if a Lake/Orange County Connector is viable and fundable.
- New interchanges proposed at US 27 and CR 455's future extension.



Study Area

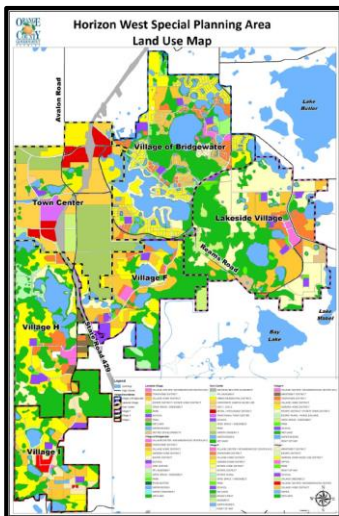


Future Land Use



Wellness Way Area Plan

- Significant economic development potential
- Five future land use categories – Wellness Way 1, 2, 3, 4 and the Town Center



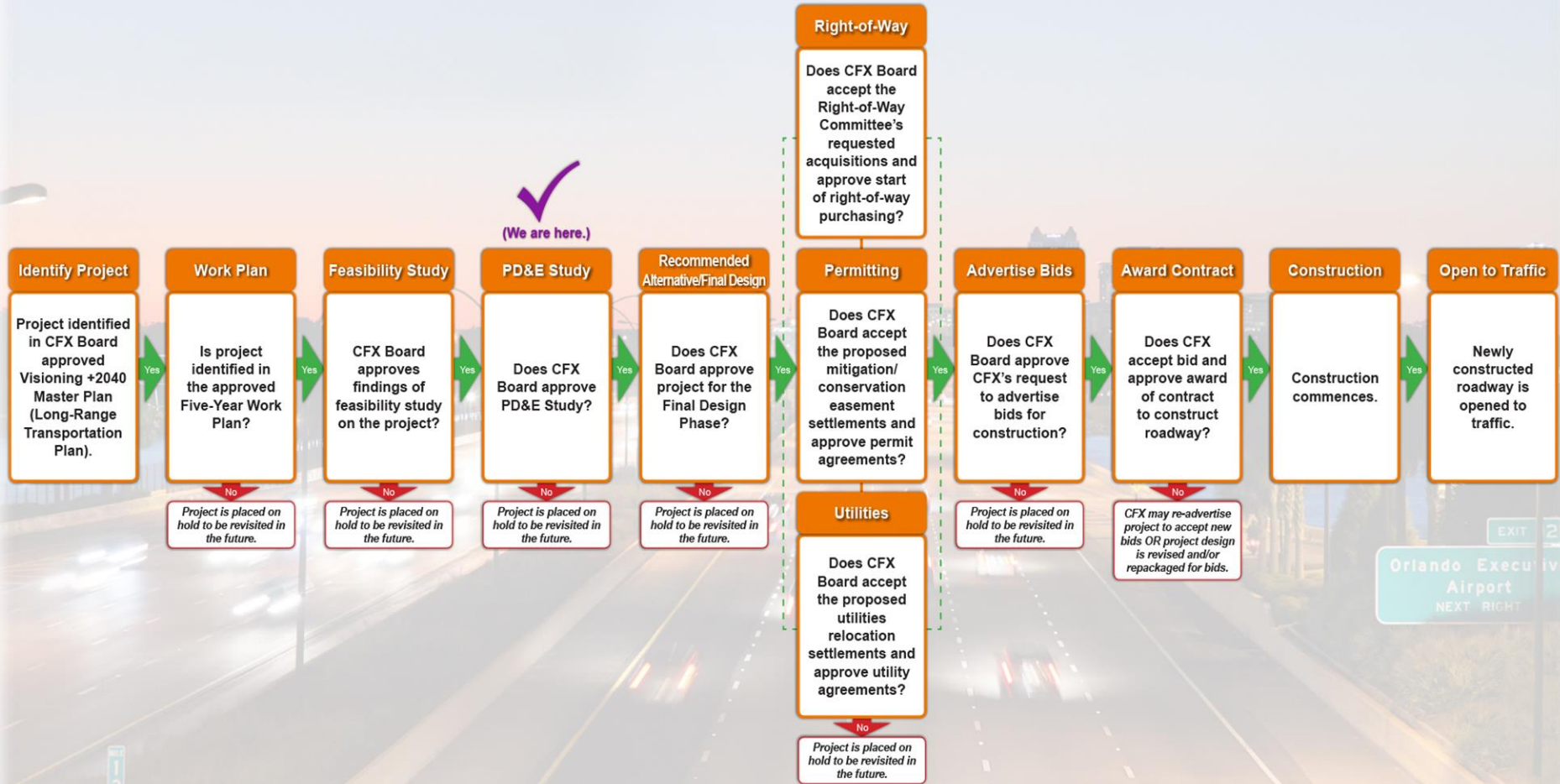
Horizon West Special Planning Area

- Fast-growing master-planned community
- Anticipated build-out of 40,000 dwelling units

Project Needs

- 1 Improved connections between area roads
- 2 Future transportation demand
- 3 Consistency with local & regional plans
- 4 Economic viability & job creation
- 5 Intermodal opportunities
- 6 Evacuation & emergency services

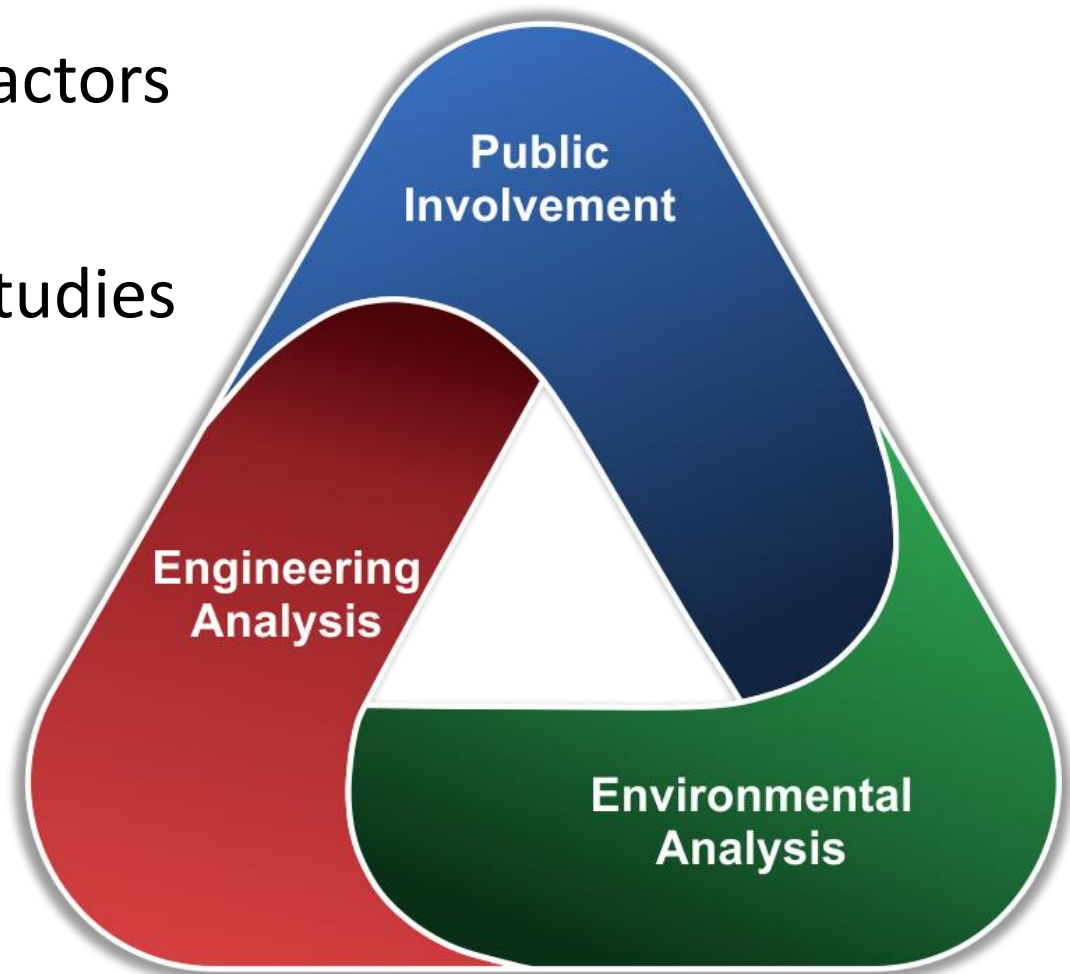
CFX Project Development Process



EXIT 28
Orlando Executive Airport
NEXT RIGHT

Current Phase – PD&E Study

- Considers several factors and impact
- Builds upon prior studies
- Elicits public input
- Evaluates multiple alignments



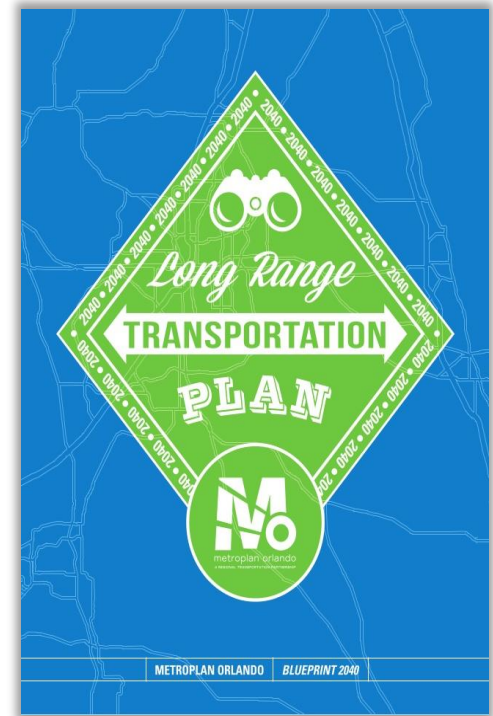
Project History – Identify Project



CFX



Lake-Sumter MPO



MetroPlan Orlando

Project History – Feasibility Study

SR 408 Western Extension Concept Development and Feasibility Study (2002)

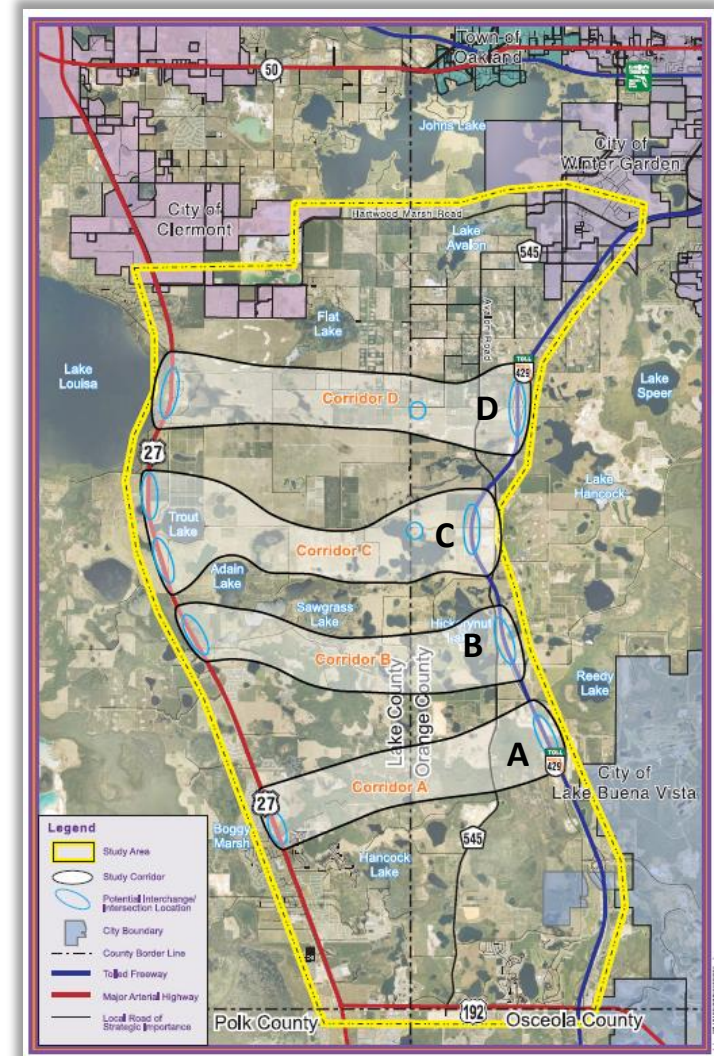
- Four corridors identified in CFX study
- Southern Corridor highlighted



Project History – Feasibility Study

Concept Development and Evaluation Study for a potential SR 429 to US 27 Connector (2007)

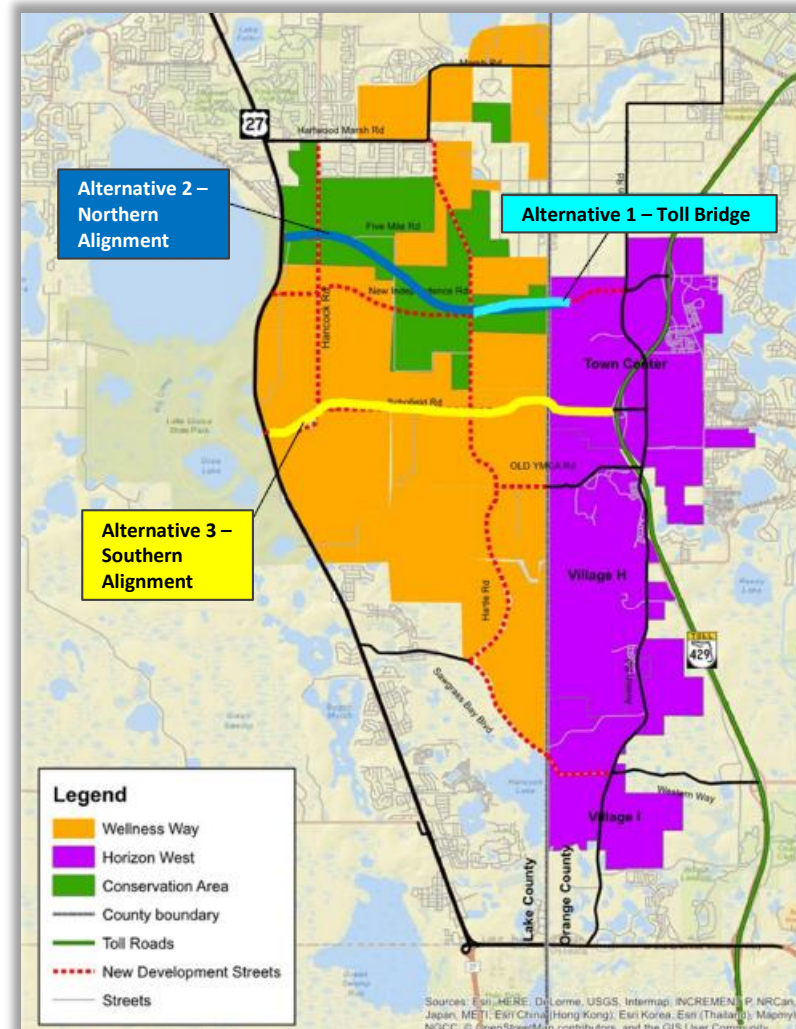
- Area south of Hartwood Marsh Road and north of US 192
- Three viable corridors
- Corridor C impact on Horizon West Town Center



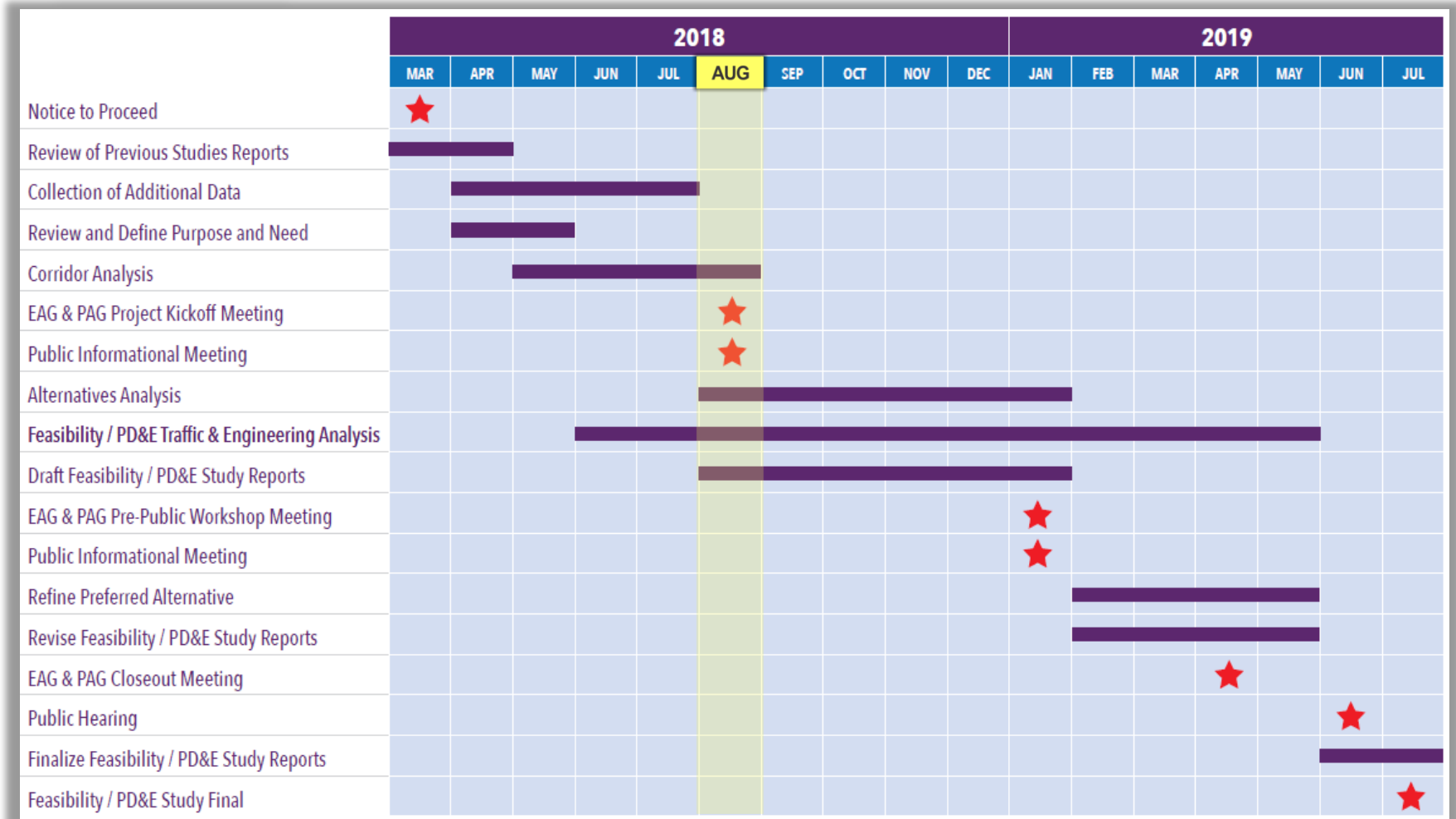
Project History – Feasibility Study

Lake/Orange Connector Preliminary Traffic & Revenue Study Report (2017)

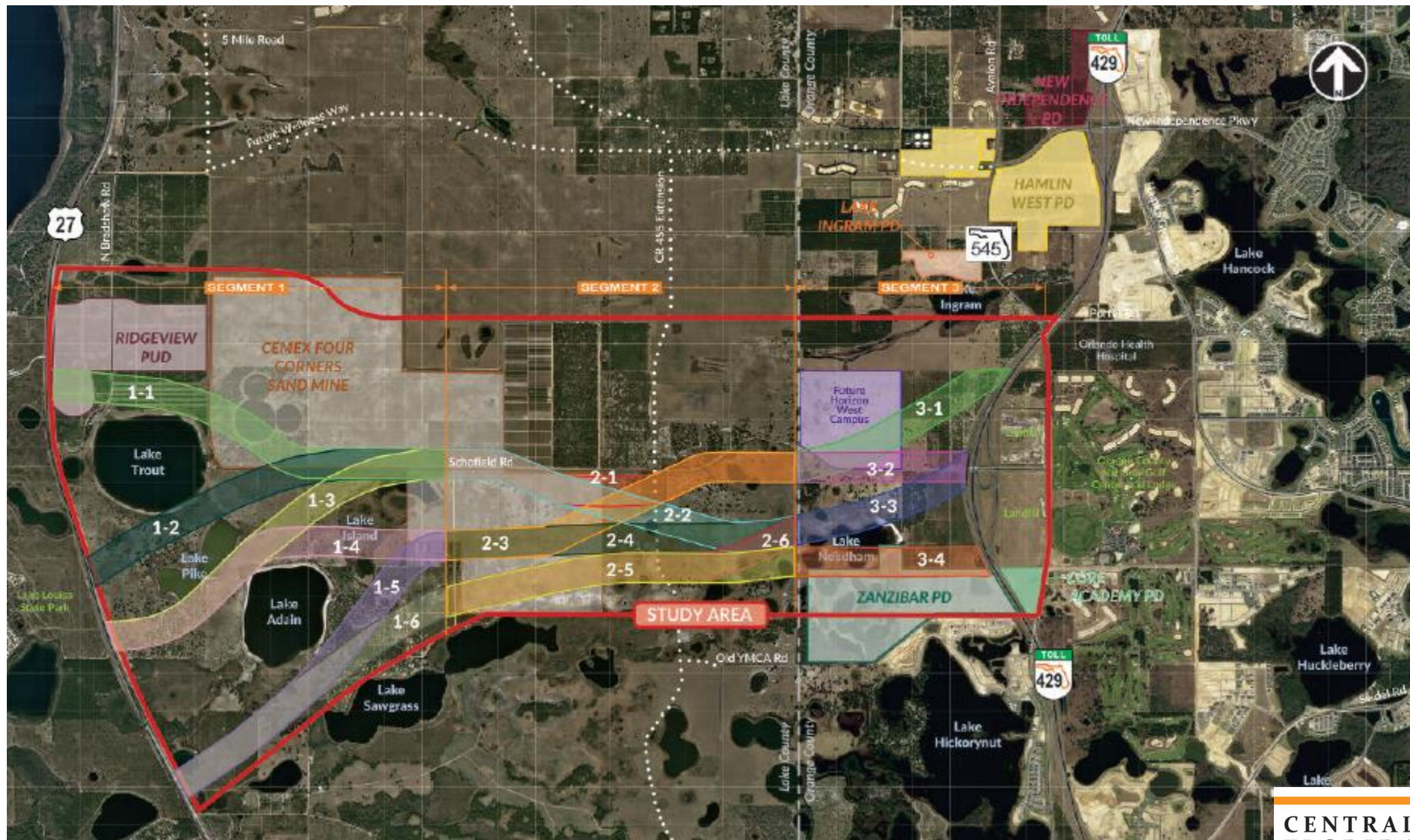
- Compared toll revenue opportunities
- Found potential in Southern Alignment
- Prompted current study



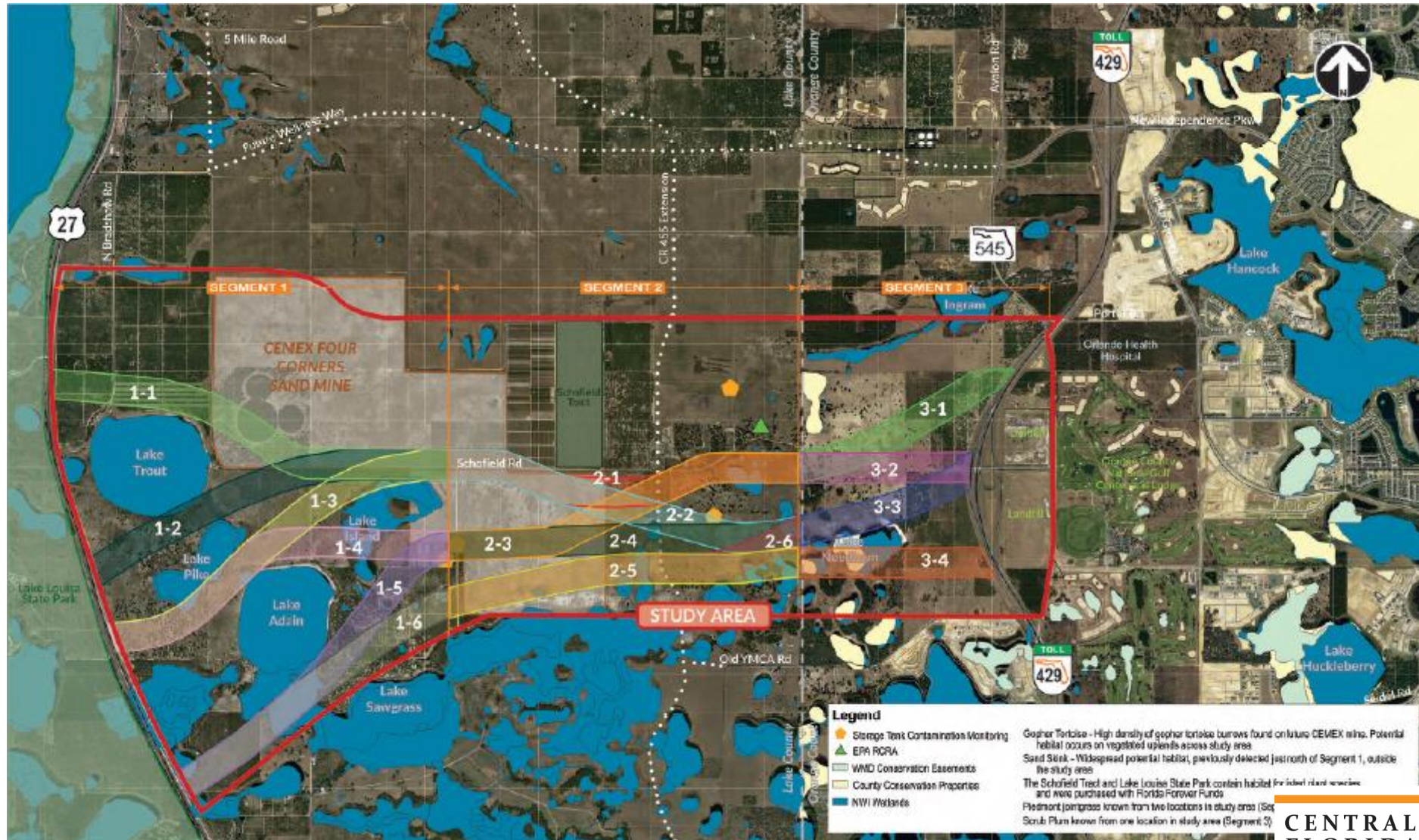
Schedule



Corridor Analysis – Social Constraints Map



Corridor Analysis – Environmental Constraints Map



Corridor Analysis – Evaluation Criteria

Engineering Evaluation Criteria

Major Utility Conflicts
Geometric Considerations
Floodplain Encroachment
Traffic Considerations

Socio-Economic Evaluation Criteria

Approved Planned Unit Developments
Historical/Archaeological Resources
Parks/Recreational Facilities
Right-of-Way Impacts

Environmental Evaluation Criteria

Wetlands
Wildlife and Habitat
Conservation Lands/Mitigation Banks
Contamination

Corridor Analysis - Public Involvement

Public input opportunities:

- Project Advisory Group meeting
- Environmental Advisory Group meeting
- Stakeholder and agency meetings/presentations
- Public Informational Meeting
- Project website, hotline, Facebook page



Next Steps

- Public Informational Meeting - August 30th
- Corridor and alternatives analysis
- Post presentation & meeting materials

Open Discussion

- The Environmental Advisory Group (EAG) is a special advisory resource.
- The EAG is comprised of a diverse group of stakeholders that will provide input regarding local needs, concerns and potential physical, natural, social and cultural impacts that will be crucial in the evaluation of corridor and alternative alignments.
- The 2nd EAG meeting is anticipated to occur in early 2019.



For More Information:

Kathy Putnam

Public Involvement Coordinator

Phone: 407-802-3210

Email: LakeOrangeStudy@CFXway.com

www.CFXway.com