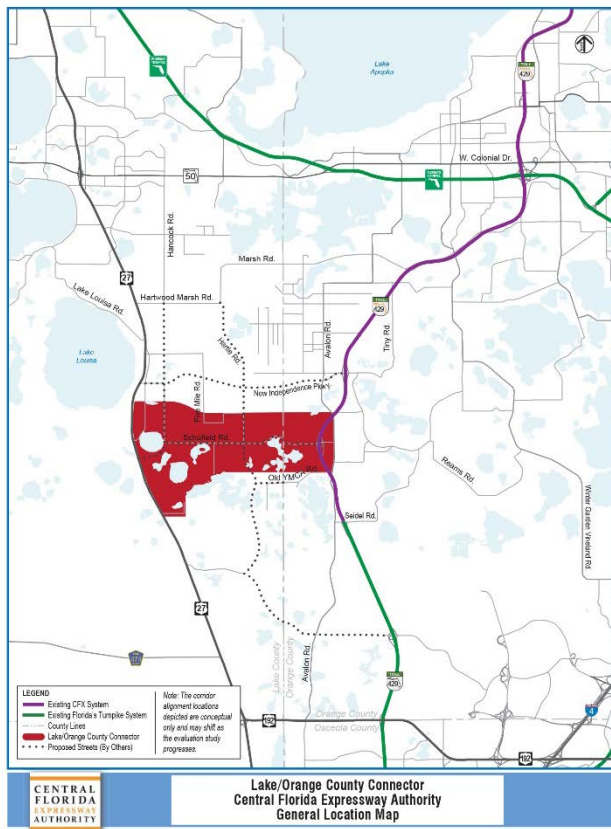


LAKE / ORANGE COUNTY CONNECTOR (US 27 TO SR 429) ENVIRONMENTAL ADVISORY GROUP (EAG) MEETING #1 SUMMARY

Date/Time: Monday, July 30, 2018; 1:30 p.m. – 3:00 p.m.

Location: Central Florida Expressway Authority (CFX), 4974 ORL Tower Road, Orlando, FL 32807, Board Room

Attendees: Ten EAG members and eight staff members attended. Six EAG members participated via GoToMeeting. See sign-in sheets attached.



I. Notifications

Invitation letters were emailed to 61 members of the EAG on July 9, 2018.

II. Welcome

Nicole Gough of Dewberry, CFX's General Engineering Consultant (GEC), called the meeting to order at 1:34 p.m. and welcomed everyone. She gave a brief introduction about the meeting and provided safety, housekeeping and Title VI information. She also mentioned that the meeting was being recorded and there were members participating via GoToMeeting. Attendees introduced themselves and the organizations they represented.

III. Presentation

Will Sloup, Consultant Project Manager with Metric Engineering, presented the following information:

- **Study Objective**

The Lake/Orange County Connector PD&E study will determine if a limited access facility between US 27 in south Lake County and SR 429 in west Orange County is viable and fundable in accordance with CFX policies and procedures. New interchanges are proposed at US 27 and the future extension of CR 455 in Lake County. The existing Schofield Road interchange with SR 429 in Orange County will remain but be modified to accommodate free-flow traffic movements between SR 429 and the proposed Lake/Orange County Connector.



- **Study Area**

At the present time, the study area is generally undeveloped. The study area lies within Lake County and Orange County and the limits are generally described as: Porter Road on the north; SR 429 on the east; Old YMCA Road on the south; and US 27 on the west. (Presented on the slide was a map of the study area which was also available in the room as a 40" x 64" display board.)

- **Future Land Use**

The study area falls within the Wellness Way Area Plan and the Horizon West Special Planning Area.

The Wellness Way Area Plan has been recognized for many years as an area that has significant potential for economic development in southeast Lake County. It's comprised of approximately 15,471 acres in southeast Lake County. The anticipated build out of 16,531 units will generate over 26,839 jobs.

Horizon West is a fast-growing, master-planned community in southwest Orange County. This is highlighted by the fact that Horizon West’s share of all approved single-family building permits within Orange County has steadily increased since 2002 and comprised more than 50% of issued permits in 2015. The study area falls within the Town Center and Village H (Hickory Nut) of Horizon West. The Town Center will be a regional employment center with a projected employment force of over 27,000.

- **Project Needs**

The need for a transportation project arises from deficiencies, issues or concerns that currently exist or are expected to occur within the study area. In short, the need establishes the rationale for pursuing a project. There are six project needs that serve as justification for the proposed Lake / Orange County Connector:

1. Improve connections between area roads.
2. Accommodate future transportation demand.
3. Provide consistency with local and regional plans.
4. Support economic viability and job creation.
5. Support intermodal opportunities.
6. Enhance evacuation and emergency services.

- **CFX Project Development Process**

CFX follows a project development and environment, or PD&E, process for new alignment expansion projects. At the conclusion of the PD&E study one of two things can occur - the proposed project can either move forward into the final design phase or be placed on hold to be revisited in the future.

- **Current Phase – PD&E Study**

Simply stated, the PD&E Study will determine if there is an engineering and environmentally feasible alternative to meet the project needs. Using the results of previous studies as a foundation, a feasible corridor for the proposed toll road will be identified. Several alignments within the corridor will then be developed and evaluated to identify a preferred alternative. The PD&E study and Final Design phases are funded in CFX’s Five-Year Work Plan. Design funds are indicated as placeholder in fiscal years 2021/22 and 2022/23 until the CFX Governing Board approves the results of this PD&E Study.

- **Project History – Identify Project**

The Lake / Orange County Connector is identified in the 2040 Master Plan and was also identified in previous Master Plans (2025, 2030 and 2035) as the “Wellness Way Corridor”. It is also identified in Lake County and Orange County Long Range Transportation Plans.

- **Project History – Feasibility Study**

In 2002, CFX studied the feasibility of a limited access toll road to connect US 27 on the west with Florida’s Turnpike and the then newly constructed SR 429. Based on the concepts that

were developed, the study concluded that only the Southern Corridor offered any long-term opportunity for CFX participation. The Southern Corridor was in the general area of Schofield Road.

Again in 2007, CFX studied the feasibility and viability of a potential US 27 to SR 429 expressway connection within an area south of Hartwood Marsh Road and north of US 192. The study identified Corridors A, C and D as the three overall viable corridors. In the end Corridor C, which paralleled Schofield Road, was not recommended due to potential impacts to the planned Horizon West Town Center at the eastern terminus.

In 2017, CFX completed a preliminary traffic and revenue analysis of three alignments. The “Southern Alignment”, located in the general area of Schofield Road, was found to provide the greatest potential for revenue generation and a recommendation was made to move forward with a Feasibility/PD&E Study.

- **Schedule**

The study began in May 2018 with a 15-month schedule. In August we will be finalizing corridor analysis, the analysis that will help identify the most feasible corridors. We will then proceed to alternatives analysis which will help identify a preferred alternative. Three PAG/EAG meetings will be held throughout the course of the study. Today we are discussing corridors, the next time we meet will discuss several alternative alignments, and the final time we meet we will focus on the preferred alternative.

- **Corridor Analysis – Social Constraints Map**

We have separated the study area into three segments and have developed several 800’ wide corridors. This resulted in a total of 16 corridor segments that we are able to evaluate in different combinations to create a direct link between US 27 and SR 429. These corridors were then mapped against known constraints. (Presented on the slide was the Social Constraints Map which was also available in the room as a 40” x 64” display board.)

- **Corridor Analysis – Environmental Constraints Map**

(Presented on the slide was the Environmental Constraints Map which was also available in the room as a 40” x 64” display board.)



- **Corridor Analysis - Evaluation Criteria**

The corridors will be evaluated to determine how well the six project needs are satisfied. The corridors will also be evaluated based on engineering, environmental and socio-economic criteria that were tailored to fit the characteristics of the study area. Evaluation matrices will be developed, based on these criteria, to facilitate the comparison of corridors.

IV. Presentation, continued

To conclude the presentation Kathy Putnam, CFX's Public Involvement Coordinator, presented the following information:

- **Corridor Analysis - Public Involvement**

Public involvement is critical throughout the study process. Multiple opportunities to provide input are being provided. Comments received during corridor analysis will be used to refine the project needs, corridor constraints and evaluation criteria. The results of the corridor analysis will be summarized in an Alternatives Corridor Evaluation Report which will be made available for public review.



- **Next Steps**

We will continue to solicit public input on the corridor alternatives with a Public Informational Meeting scheduled to occur on August 30th from 5:30 pm to 7:30 pm at the Clermont Arts & Recreation Center in Clermont. The meeting will be held in an open house format. After this meeting the corridor analysis will be finalized and the study team will begin alternatives analysis. Following today's meeting the PowerPoint presentation, meeting summary and meeting materials will be posted to the study website and Facebook page. The presentation will also be emailed to the PAG & EAG members.

V. Questions & Discussion

Nicole Gough invited questions and discussion on the presentation and/or project study.

- **Lex Veech, property owner:** Asked for clarification on the 2007 study...was corridor C removed from consideration? It was out and now it's back in? **Jazlyn Heywood with Metric Engineering** responded that the study identified three viable corridors, A, C and D. In the end the report did not recommend corridor C due to potential impacts to the planned Horizon West Town Center at the eastern terminus. Yes, this study is once again considering Corridor C. The study team is coordinating with Orange County staff, property owners and developers to minimize and/or avoid impacts to the planned Horizon West Town Center.
- **Beth Jackson, Orange County – Environmental Protection Division:** There are significant environmental constraints, particularly around Schofield: Gopher tortoise, sand skink, several threatened and endangered plant species are present. "Site 6" is utilized for gopher tortoise relocation (for Water Conserv II) – quasi-regulated area mostly to the north. There was a brief discussion regarding utilities and the need to coordinate with Woodward & Curran.

- **Aldin Mathews, Lake Louisa State Park:** What do the colors (for each corridor) represent? Any specific hierarchy? **Will Sloup** with **Metric Engineering** replied that they are just colors to distinguish different segments and corridors. **Aldin Mathews** continued that there should be some consideration to the entrance at the state park (intersection) with many visitors and a number of R/Vs navigating the area, etc.



- **William “Bill” Graf, South Florida Water Management District (SFWMD):** If you meet water management districts rules, you can get a permit. You appear to be within Water Conserv II area. There may be an opportunity for a Water Conserv II partnership. The project will obviously create more impervious area. A partnership could reduce pondage.
- **James Hollingshead, St. Johns River Water Management District (SJRWMD):** I would also ask that you explore other opportunities for stormwater RSD (Regional Sewer District). Any irrigation should be reclaimed or stormwater.
- **Chris Matson, Florida Department of Environmental Protection District 3:** We have done some review of various interchange potentials for section 1 on the map. From an environmental point of view i.e. noise, light: segments 1-5, 1-6 are preferred.
- **Casey Lyons, Florida Department of Transportation District Five (GoToMeeting):** By tying into US 27, traffic could be relocated onto our facility...how much traffic going into our road? I would suggest coordination with FDOT to augment our capacity on US 27. **Will Sloup** added that traffic forecasting is going on now and as soon as it becomes available they will coordinate with FDOT.
- **Cammie Dewey, SJRWMD (GoToMeeting):** These alignments cross over both water management districts. Orange County is SFWMD, Lake County is SJRWMD.

There were no more comments, so Nicole Gough thanked everyone for attending and providing input. The meeting concluded at 2:00 p.m.

END OF SUMMARY

This meeting summary was prepared by Kelly Hiden, Public Involvement Coordinator with The Valerin Group, Inc. It is not verbatim, but is a summary of the meeting activities and overall discussion. If you feel something should be added or revised, please contact Kelly Hiden by email at kelly@valeringroup.com or by telephone 407-508-0839 within five days of receipt of this summary.

EAG members present:

John Classe – Reedy Creek Improvement District
William Graf – South Florida Water Management District (SFWMD)
Mark Griffin – City of Clermont
Ron Hart – Lake County Water Authority
James Hollingshead – St. Johns River Water Management District (SJRWMD)
Beth Jackson – Orange County, Environmental Protection Division
Aldin Mathews – Florida Park Service, Lake Louisa State Park
Chris Matson – Florida Department of Environmental Protection (FDEP), District 3
Brandon Matulka - Lake County, Agency for Economic Prosperity
Lee Pulham – Reedy Creek Improvement District
Lex Veech – property owner

GoToMeeting Attendees:

Casey Lyon – Florida Department of Transportation (FDOT) District Five
Ginny Jones – Florida Division of Historic Resources
Kathy Pagan – Lake County
Richard Mospens – Florida Fish and Wildlife Conservation Commission (FWC)
Cammie Dewey - St. Johns River Water Management District (SJRWMD)
Zakia Williams - US Fish and Wildlife

Staff

Brian Hutchings – CFX
Jonathan Williamson – Dewberry
Merissa Evans – Dewberry
Nicole Gough - Dewberry
Will Sloup – Metric Engineering
Jazlyn Heywood – Metric Engineering
Kathy Putnam – Quest Corporation of America
Kelly Hiden – The Valerin Group

SIGN IN

Lake / Orange County Connector Feasibility / Project Development & Environment (PD&E) Study
ENVIRONMENTAL ADVISORY GROUP - MEETING NO. 1

CFX Project No.: 599-225

CFX Headquarters, 4974 ORL Tower Rd, Orlando, FL 32807

July 30, 2018 1:30 p.m. – 3:30 p.m.

Name	Organization	Address	City/State/Zip	Email Address	Initials
Mary Hamilton	Lake County	315 W. Main Street, #411	Tavares, FL 32778	mhamilton@lakecountyfl.gov	
Ron Hart	Lake County Water Auth.	27351 S.R. 19	Tavares, FL 32778	rhart@lcwa.org	RH
Thomas Hawkins	1000 Friends of Florida	P. O. Box 5948	Tallahassee, FL 32314-5984	friends@1000fof.org	
Jason Hight	Florida Fish and Wildlife Conservation Commission	Farris Bryant Building 620 S. Meridian Street	Tallahassee, FL 32399-1600	jason.hight@myfwc.com	
Jeff Holland	Reedy Creek Improvement District (RCID)	P. O. Box 10170	Lake Buena Vista, FL 32830	jholland@rcid.org	
James Hollingshead	St. Johns River Water Management District	601 S. Lake Destiny Road Suite 200	Maitland, FL 32751	jhollingshead@sjrwmd.com	JH
Marjorie Holt	Sierra Club of Florida	Florida Regional Office 1990 Central Avenue	St. Petersburg, FL 33712	marjorieholt@earthlink.net	
Beth Jackson	Orange County - Environmental Protection Division	800 Mercy Drive, Suite 4	Orlando, FL 32808	beth.jackson@ocfl.net	B. Jackson
Kacee Johnson	FL Dept of Environmental Protection	3900 Commonwealth Blvd.	Tallahassee, FL 32399	kacee.l.johnson@dep.state.fl.us	
Ginny Jones	FL Dept of State - Div of Historical Resources	RA Gray Building 500 S. Bronough Street	Tallahassee, FL 32399-0250	ginny.jones@dos.myflorida.com	Attended by phone & Go to Meeting
Wil Kitchings	FL Dept of Agriculture - Florida Forest Service, Orange County	8431 S Orange Blossom Trail	Orlando, FL 32809	wil.kitchings@freshfromflorida.com	
Charles Lee	Audubon Society - Central Florida	1101 Audubon Way	Maitland, FL 32751	chlee2@earthlink.net	
Casey Lyon	FDOT - District Five	719 S. Woodland Blvd.	DeLand, FL 32720	casey.lyon@dot.state.fl.us	Attended by phone & Go to Meeting

Handwritten checkmarks in the left margin, one for each row of the sign-in table.

SIGN IN

Lake / Orange County Connector Feasibility / Project Development & Environment (PD&E) Study

ENVIRONMENTAL ADVISORY GROUP - MEETING NO. 1

CFX Project No.: 599-225

CFX Headquarters, 4974 ORL Tower Rd, Orlando, FL 32807

July 30, 2018 1:30 p.m. – 3:30 p.m.

Name	Organization	Address	City/State/Zip	Email Address	Initials
Laurie Ann MacDonald	Defenders of Wildlife - Florida	433 Central Avenue - Ste 200	St. Petersburg, FL 33701	laurie.macdonald@defenders.org	
David Mahnken	Water Conserv II w/E Sciences	17498 McKinney Road	Winter Garden, FL 34787	dmahnken@esciencesinc.com	
Patricia Martin	The Nature Conservancy	Florida Field Office 2500 Maitland Center Pkwy. Suite 311	Maitland, FL 32751	tricia_martin@tnc.org	
Richard Mospens	Florida Fish and Wildlife Conservation Commission	Farris Bryant Building 620 S. Meridian Street	Tallahassee, FL 32399-1600	richard.mospens@myfwc.com	Attended by phone & Go to meeting
Keith Mousel	FL Dept of Agriculture - Florida Forest Service, Lake County	Withlacoochee Forestry Center 15019 Broad Street	Brooksville, FL 34601	keith.mousel@freshfromflorida.com	
Reinier Munguia	Audubon Society – Lake Region	115 Lameraux Road	Winter Haven, FL 33884	president@lakeregionaudubon.org	
Bill Parkins	Ridge Rangers	1630 Royce Ranch Avenue	Lake Placid, FL 33852	ridgerangers@myfwc.com	
Timothy Parsons	FL Dept of State - Div of Historical Resources	RA Gray Building 500 S. Bronough Street	Tallahassee, FL 32399-0250	timothy.parsons@dos.myflorida.com	
Andrew Philips	US Army Corps of Engineers, Jacksonville District	Jacksonville District P. O. Box 4970	Jacksonville, FL 32232-0019	andrew.w.philips@usace.army.mil	
John Puhek	Sierra Club of Florida	Florida Regional Office 1990 Central Avenue	St. Petersburg, FL 33712	flsquirrel@aol.com	
Lee Pulham	Reedy Creek Improvement District (RCID)	P. O. Box 10170	Lake Buena Vista, FL 32830	lpulham@rcid.org	LP
Linda Reeves	FL Dept of Environmental Protection	3900 Commonwealth Blvd.	Tallahassee, FL 32399	linda.reeves@dep.state.fl.us	
Jennifer Rubiello	Environment Florida	3110 1st Avenue, Ste 2000	Orlando, FL 32809		

Handwritten checkmarks and initials in the left margin, including a large 'L' and 'M'.

SIGN IN

Lake / Orange County Connector Feasibility / Project Development & Environment (PD&E) Study
ENVIRONMENTAL ADVISORY GROUP - MEETING NO. 1

CFX Project No.: 599-225

CFX Headquarters, 4974 ORL Tower Rd, Orlando, FL 32807

July 30, 2018 1:30 p.m. – 3:30 p.m.

Name	Organization	Address	City/State/Zip	Email Address	Initials
Scott Sanders	Florida Fish and Wildlife Conservation Commission	Farris Bryant Building 620 S. Meridian Street	Tallahassee, FL 32399-1600	scott.sanders@myfwc.com	
Tom Shupe	Florida Fish and Wildlife Conservation Commission	Farris Bryant Building 620 S. Meridian Street	Tallahassee, FL 32399-1600	tom.shupe@myfwc.com	
Scott Spaulding	Friends of Lake Louisa State Park	7305 U.S. Hwy. 27	Clermont, FL 34714	scott.spaulding@dep.state.fl.us	
Alex Stigliano	Florida Trail Association	5415 SW 13th Street	Gainesville, FL 32608	alex@floridatrail.org	
Joseph Sullivan	Florida Highway Administration (FHWA) - FL	400 W. Washington Street - Suite 4200	Orlando, FL 32801	Joseph.Sullivan@dot.gov	
Neal Thomas	Orange County Environmental Protection Division	800 Mercy Drive, Suite 4	Orlando, FL 32808	neal.thomas@ocfl.net	
David Turner	Florida Fish and Wildlife Conservation Commission	Farris Bryant Building 620 S. Meridian Street	Tallahassee, FL 32399-1600	david.turner@myfwc.com	
Randy Turner	US Army Corps of Engineers, Jacksonville District	Jacksonville District P. O. Box 4970	Jacksonville, FL 32232-0019	randy.l.turner@usace.army.mil	
Bill Walsh	FDOT District Five	719 S. Woodland Blvd.	DeLand, FL 32720	william.walsh@dot.state.fl.us	
J. Dennis Westrick Mark Griffin	City of Clermont	685 W. Montrose Street	Clermont, FL 34711	jwestrick@clermontfl.org M Griffin	MG
Zakia Williams	US Fish and Wildlife Service (USFWS)	North Florida Ecological Services Field Office 7915 Baymeadows Way, Suite 200	Jacksonville, FL 32256-7517	zakia_williams@fws.gov	Attended by phone Go to Meeting

SIGN IN

Lake / Orange County Connector Feasibility / Project Development & Environment (PD&E) Study
 ENVIRONMENTAL ADVISORY GROUP - MEETING NO. 1
 CFX Project No.: 599-225
 CFX Headquarters, 4974 ORL Tower Rd, Orlando, FL 32807
 July 30, 2018 1:30 p.m. – 3:30 p.m.

Name	Organization	Address	City/State/Zip	Email Address	Initials
John Wrublik	US Fish and Wildlife Service (USFWS)	North Florida Ecological Services Field Office 7915 Baymeadows Way, Suite 200	Jacksonville, FL 32256-7517	john_wrublik@fws.gov	
BRANDON MATUIKA	LCBCC	20763 US 27	Groveland FL	brmatulka@lakecountyfl.gov	
Chris Matson	FDEP - District 3 DRP	1800 Wekiwa Circle Apopka, FL	Apopka, FL	christopher.matson@dep.state.fl.us	
ALDWIN MATHEWS	FPS - LAKE LOUISA STATE PARK	7305 US 27, ORANGE	CLERMONT, FL 34714	ALDWIN.MATHEWS@dep.state.fl.us	
Alex VEECH	Property Owner	9650 AVELLINO AVE #801	ORANGE, FL 32219	RVB3@ymail.com	
Kathy Fagan	Lake County				

Attended by phone
*Go to Meeting

STAFF SIGN IN SHEET


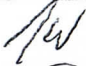
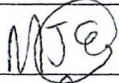



Lake / Orange County Connector Feasibility / Project Development & Environment (PD&E) Study

ENVIRONMENTAL ADVISORY GROUP - MEETING NO. 1

CFX Project No.: 599-225

CFX Headquarters, 4974 ORL Tower Rd, Orlando, FL 32807

July 30, 2018 1:30 p.m. – 3:30 p.m.

Name	Organization	Email Address	Initials
Joseph Berenis	Central Florida Expressway Authority	Joseph.Berenis@CFXWay.com	
Will Hawthorne	Central Florida Expressway Authority	William.Hawthorne@CFXWay.com	
Brian Hutchings	Central Florida Expressway Authority	Brian.Hutchings@CFXWay.com	
Glenn Pressimone	Central Florida Expressway Authority	Glenn.Pressimone@CFXWay.com	
Keith Jackson	Dewberry	KJackson@dewberry.com	
Kevin Knudsen	Dewberry	KKnudsen@dewberry.com	
Jonathan Williamson	Dewberry	JWilliamson@dewberry.com	
Merissa Evans	Dewberry	MEvans@dewberry.com	
Nicole Gough	Dewberry	NGough@dewberry.com	
Will Sloup	Metric Engineering	William.Sloup@metriceng.com	
Rob Myers	Metric Engineering	Rob.Myers@metriceng.com	
Gabriela Garcia	Metric Engineering	Gabriela.Garcia@metriceng.com	
Jazlyn Heywood	Metric Engineering	Jazlyn.Heywood@metriceng.com	
Om Prakash Kanike	CDMSmith	kanikeo@cdmsmith.com	
Carleen Flynn	CDMSmith	flynncm@cdmsmith.com	

STAFF SIGN IN SHEET

Lake / Orange County Connector Feasibility / Project Development & Environment (PD&E) Study
 ENVIRONMENTAL ADVISORY GROUP - MEETING NO. 1
 CFX Project No.: 599-225
 CFX Headquarters, 4974 ORL Tower Rd, Orlando, FL 32807
 July 30, 2018 1:30 p.m. – 3:30 p.m.

Name	Organization	Email Address	Initials
Kevin Plenzler	Fishkind & Associates	kevinp@fishkind.com	
Kathy Putnam	Quest Corporation of America	Kathy.Putnam@qcausa.com	KP
Kelly Hiden	The Valerin Group, Inc.	Kelly@valerin-group.com	KH