



**CENTRAL  
FLORIDA**  
EXPRESSWAY  
AUTHORITY

**FEASIBILITY / PROJECT DEVELOPMENT & ENVIRONMENT STUDY**  
**LAKE / ORANGE COUNTY CONNECTOR (US 27 TO SR 429)**  
**PROJECT ADVISORY GROUP MEETING NO. 1**  
**JULY 30, 2018**

# Title VI Compliance

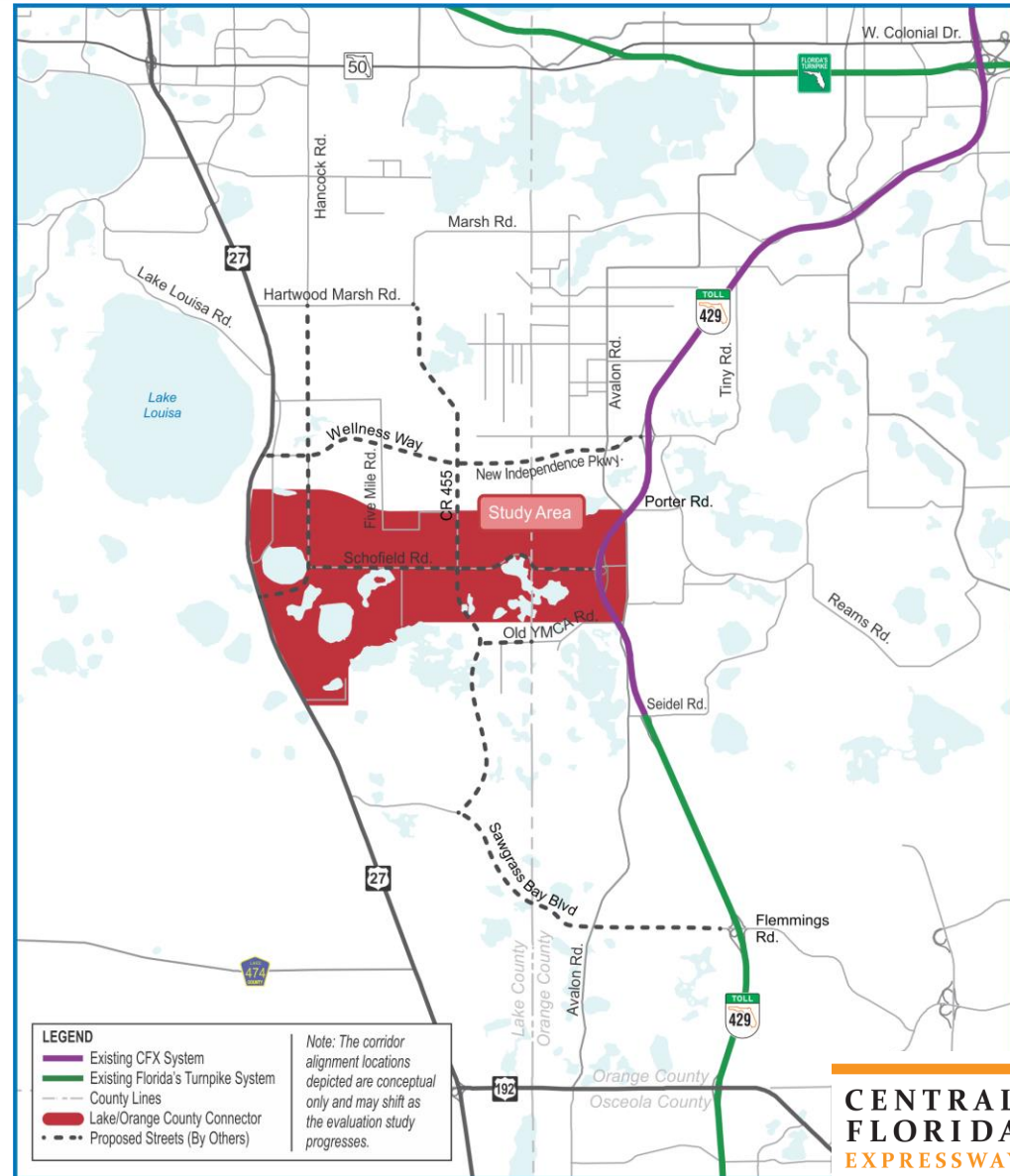
This meeting, project, or study is being conducted without regard to race, color, national origin, age, sex, religion, disability or family status. Persons wishing to express their concerns relative to compliance by the Central Florida Expressway Authority (CFX) with Title VI may do so by contacting:

Kathy Putnam  
Public Involvement Coordinator  
4974 ORL Tower Road  
Orlando, FL 32807  
407-802-3210  
[LakeOrangeStudy@CFXway.com](mailto:LakeOrangeStudy@CFXway.com)

All inquiries or complaints will be handled according to CFX procedure and in a prompt and courteous manner.

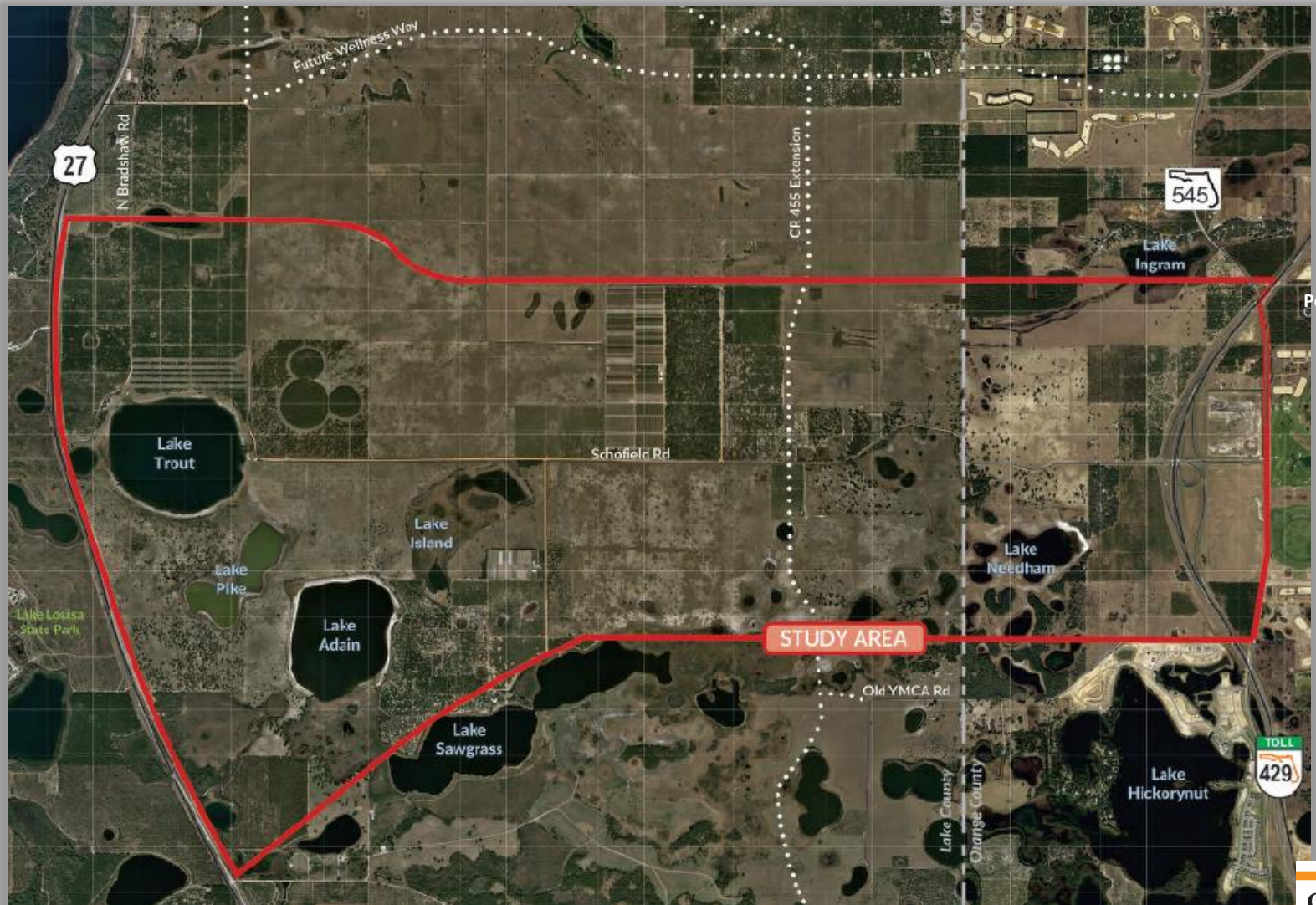
# Study Objective

- Determine if a Lake/Orange County Connector is viable and fundable.
- New interchanges proposed at US 27 and CR 455's future extension.

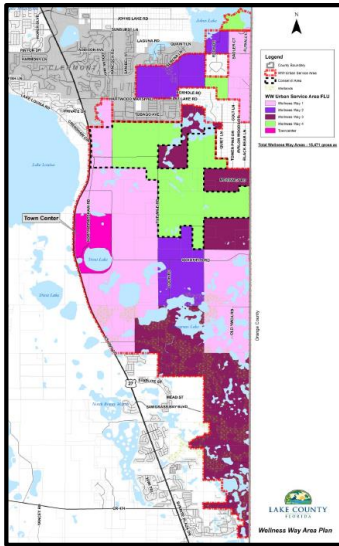




# Study Area

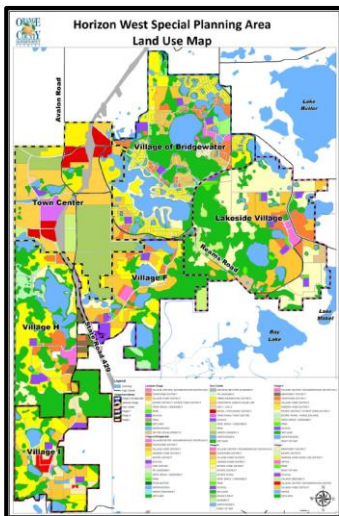


# Future Land Use



## Wellness Way Area Plan

- Significant economic development potential
- Five future land use categories – Wellness Way 1, 2, 3, 4 and the Town Center



## Horizon West Special Planning Area

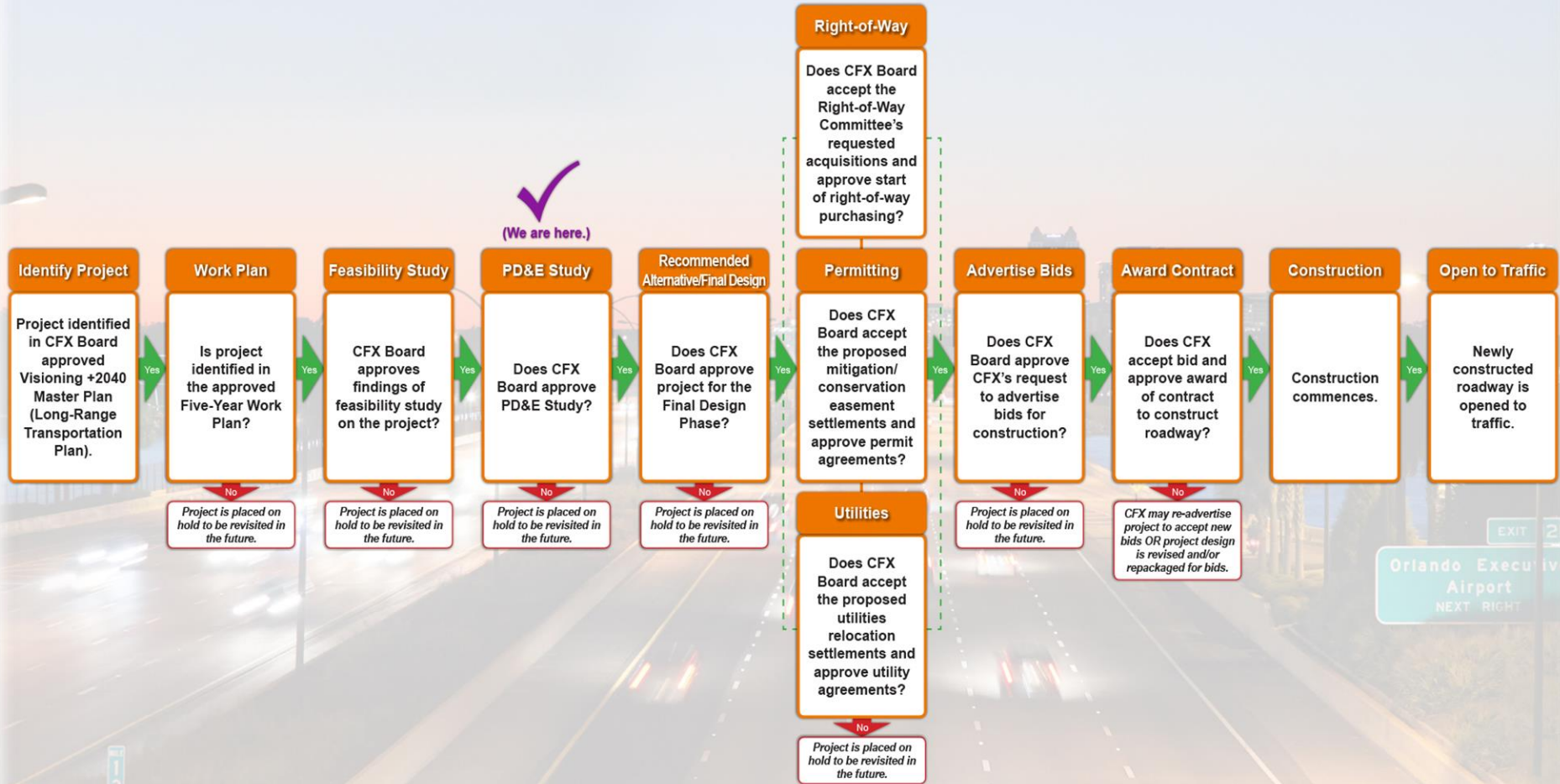
- Fast-growing master-planned community
- Anticipated build-out of 40,000 dwelling units

# Project Needs

- 1 Improved connections between area roads
- 2 Future transportation demand
- 3 Consistency with local & regional plans
- 4 Economic viability & job creation
- 5 Intermodal opportunities
- 6 Evacuation & emergency services



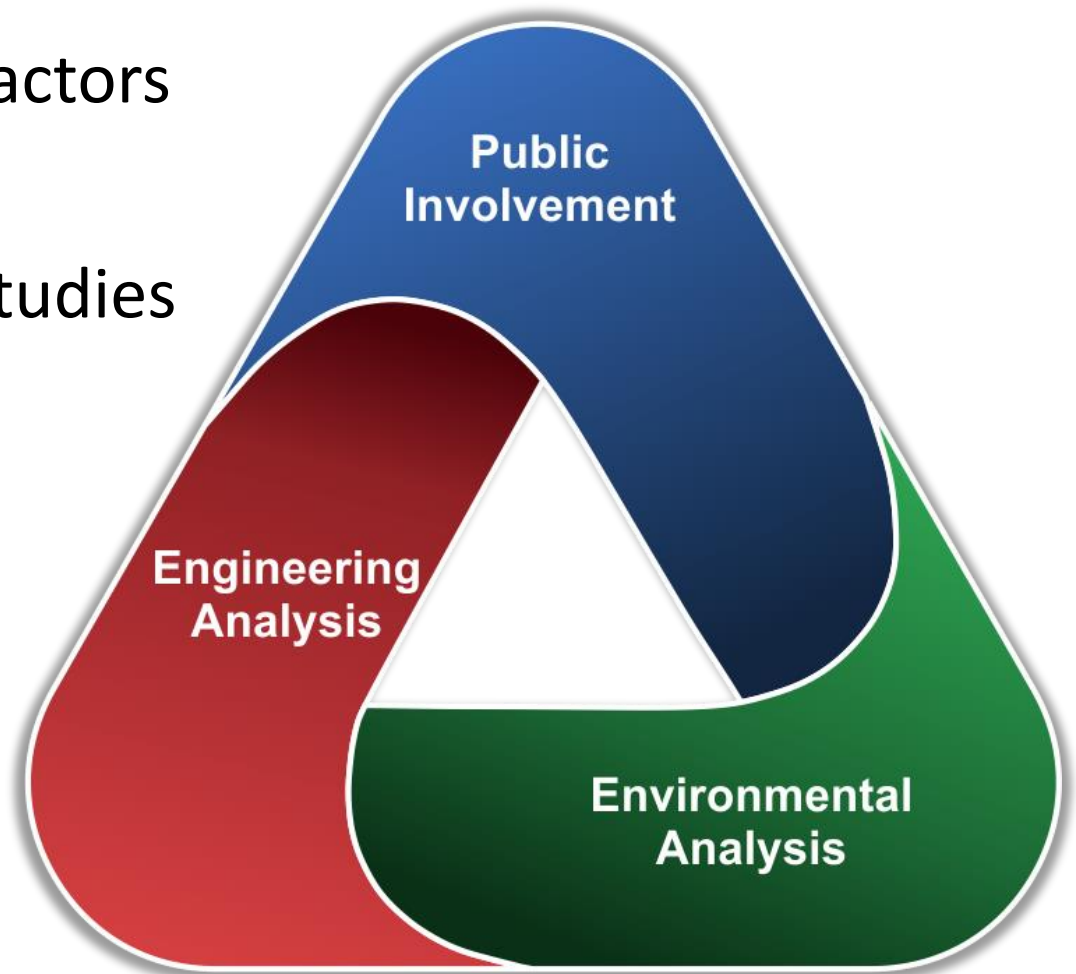
# CFX Project Development Process



EXIT 28  
Orlando Executive Airport  
NEXT RIGHT

# Current Phase – PD&E Study

- Considers several factors and impact
- Builds upon prior studies
- Elicits public input
- Evaluates multiple alignments





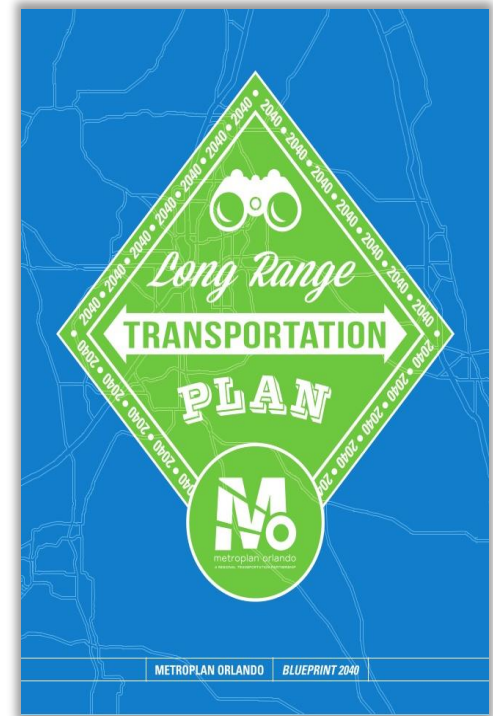
# Project History – Identify Project



CFX



Lake-Sumter MPO

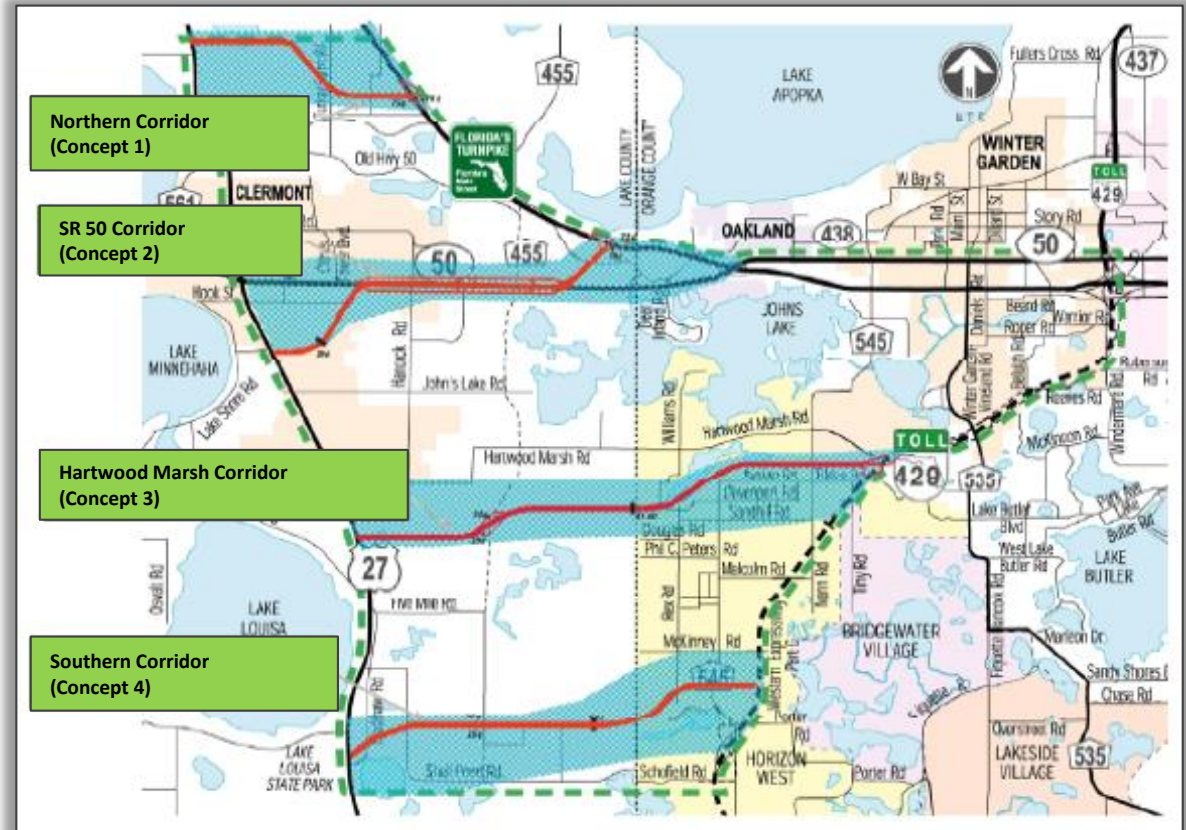


MetroPlan Orlando

# Project History – Feasibility Study

## SR 408 Western Extension Concept Development and Feasibility Study (2002)

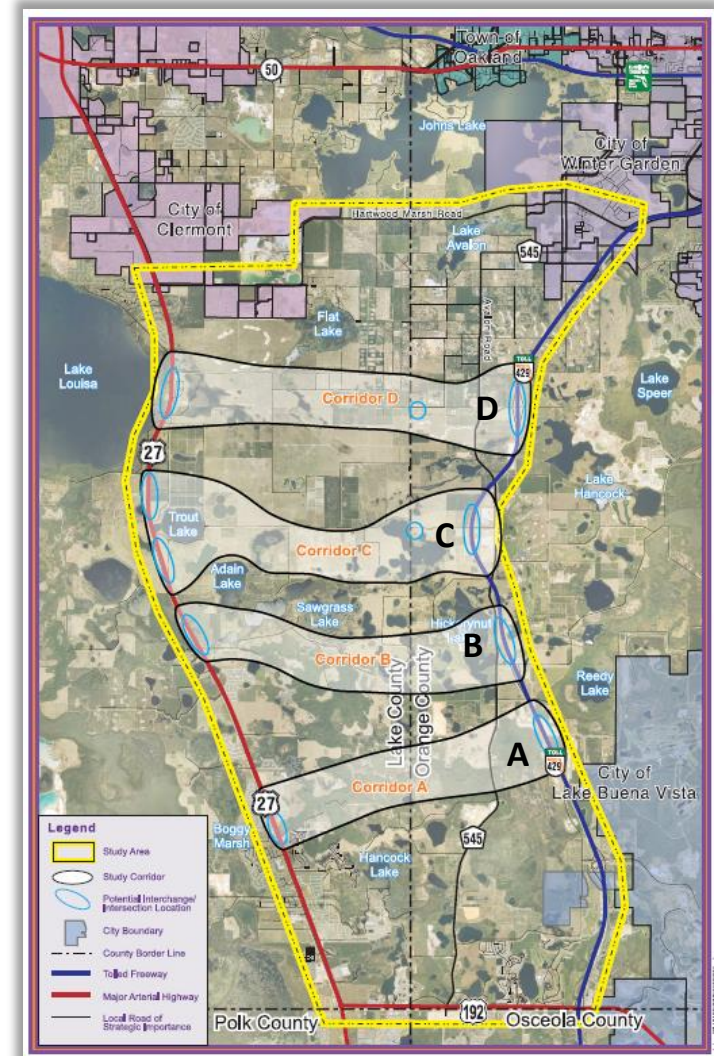
- Four corridors identified in CFX study
- Southern Corridor highlighted



# Project History – Feasibility Study

## Concept Development and Evaluation Study for a potential SR 429 to US 27 Connector (2007)

- Area south of Hartwood Marsh Road and north of US 192
- Three viable corridors
- Corridor C impact on Horizon West Town Center

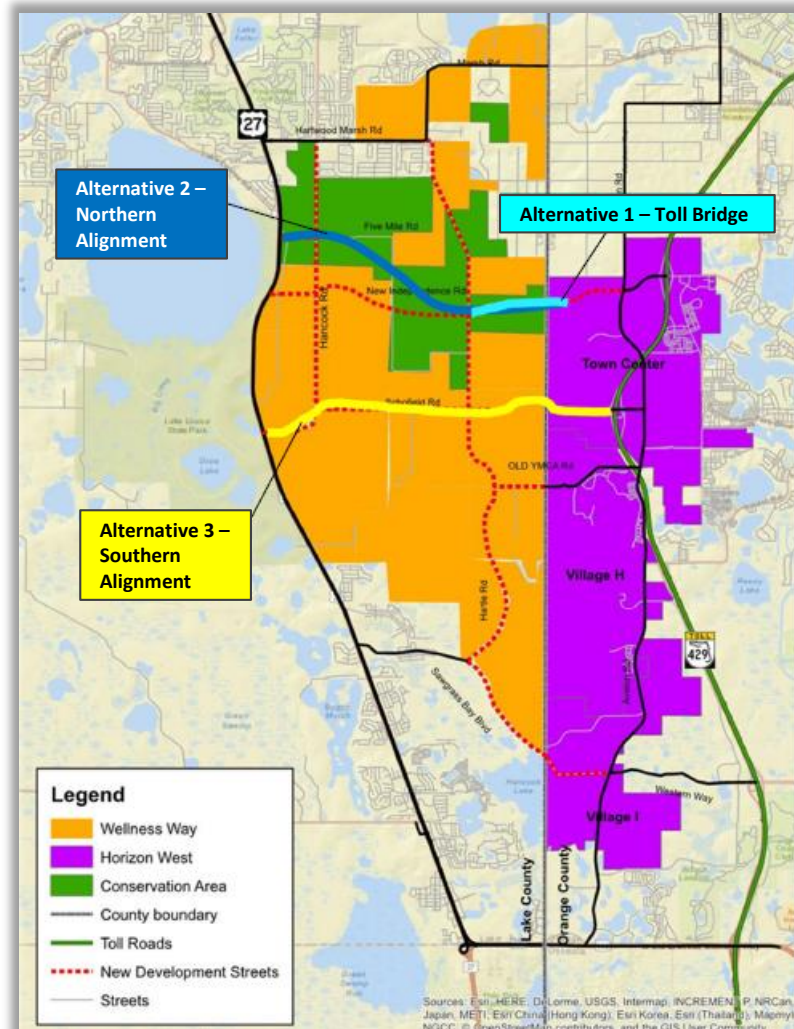




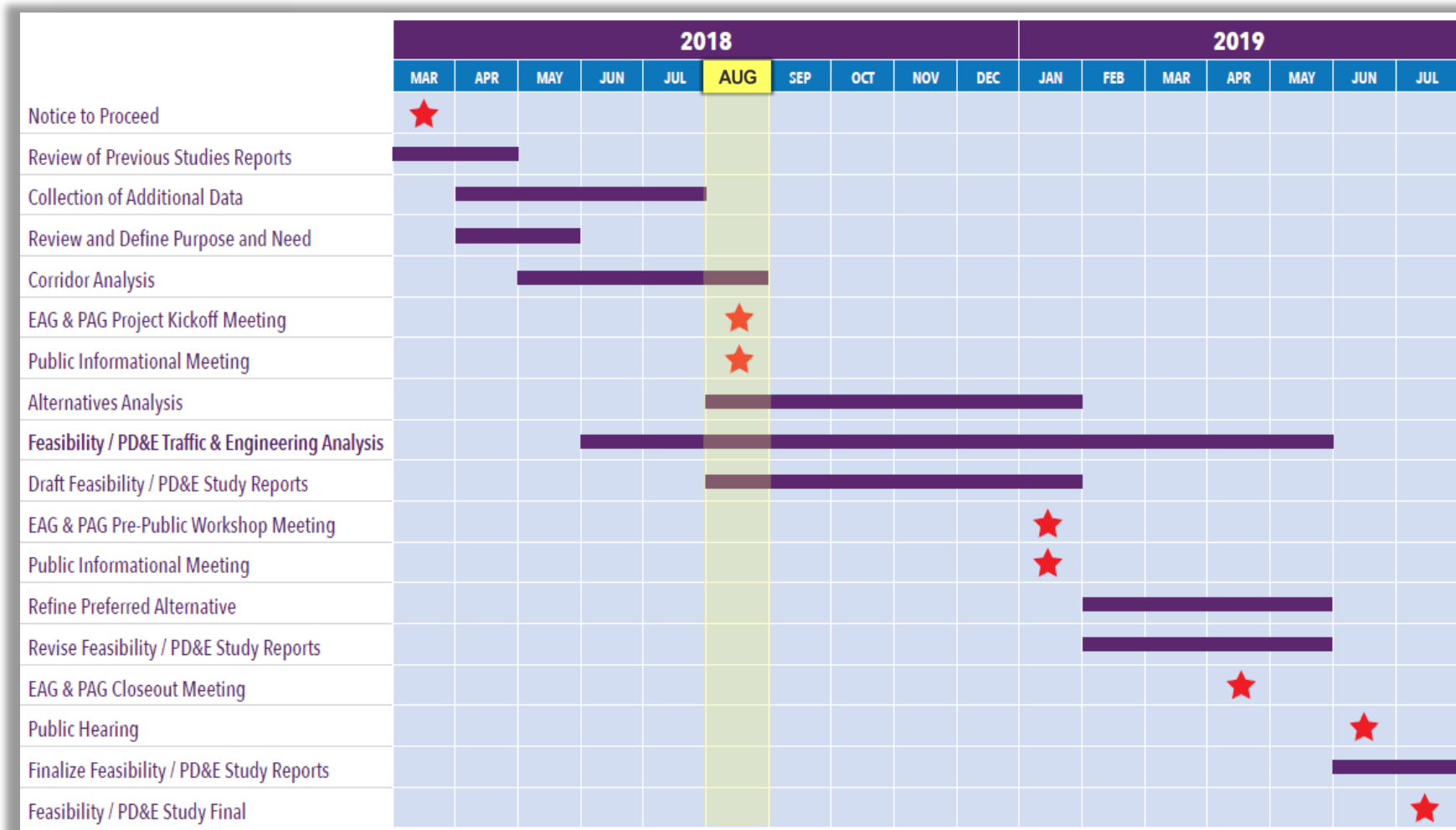
# Project History – Feasibility Study

## Lake/Orange Connector Preliminary Traffic & Revenue Study Report (2017)

- Compared toll revenue opportunities
- Found potential in Southern Alignment
- Prompted current study

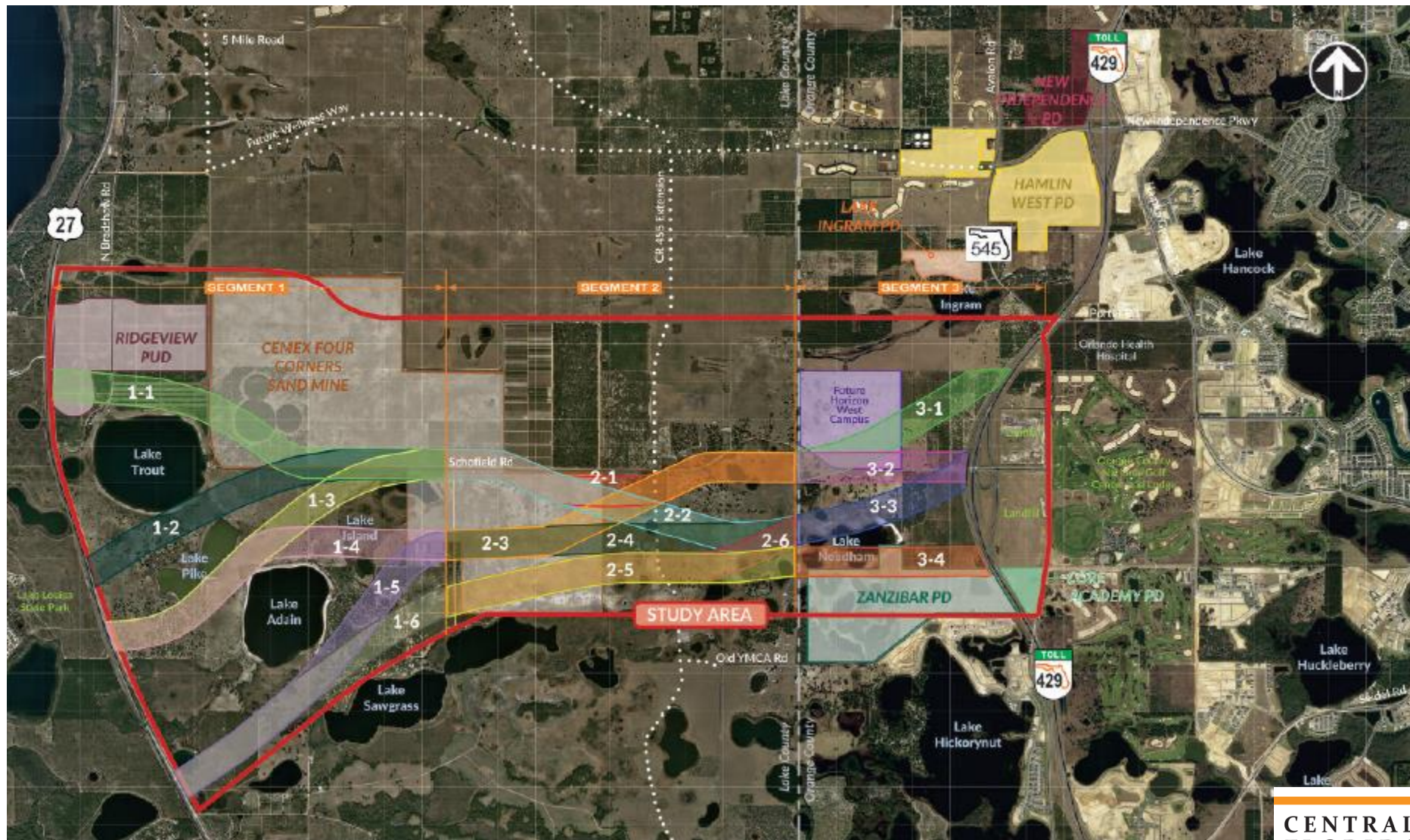


# Schedule



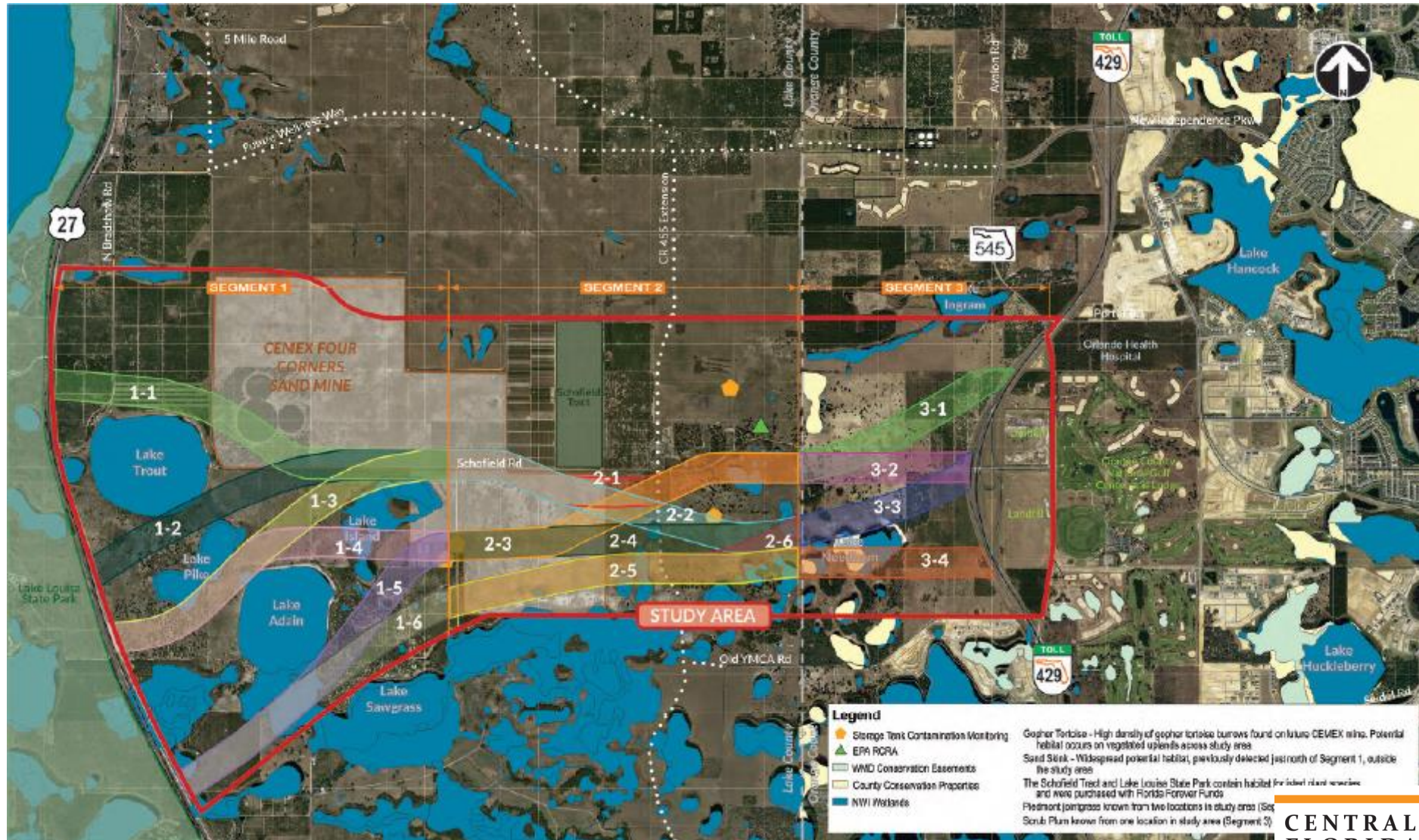


# Corridor Analysis – Social Constraints Map





# Corridor Analysis – Environmental Constraints Map



# Corridor Analysis – Evaluation Criteria

## Engineering Evaluation Criteria

Major Utility Conflicts  
Geometric Considerations  
Floodplain Encroachment  
Traffic Considerations

## Socio-Economic Evaluation Criteria

Approved Planned Unit Developments  
Historical/Archaeological Resources  
Parks/Recreational Facilities  
Right-of-Way Impacts

## Environmental Evaluation Criteria

Wetlands  
Wildlife and Habitat  
Conservation Lands/Mitigation Banks  
Contamination

# Corridor Analysis - Public Involvement

Public input opportunities:

- Project Advisory Group meeting
- Environmental Advisory Group meeting
- Stakeholder and agency meetings/presentations
- Public Informational Meeting
- Project website, hotline, Facebook page





# Next Steps

- Public Informational Meeting - August 30<sup>th</sup>
- Corridor and alternatives analysis
- Post presentation & meeting materials

# Open Discussion

- The Project Advisory Group (PAG) is a special advisory resource.
- The PAG is comprised of a diverse group of stakeholders that will provide input regarding local needs, concerns and potential physical, natural, social and cultural impacts that will be crucial in the evaluation of corridor and alternative alignments.
- The 2<sup>nd</sup> PAG meeting is anticipated to occur in early 2019.



# For More Information:

**Kathy Putnam**

Public Involvement Coordinator

Phone: 407-802-3210

Email: [LakeOrangeStudy@CFXway.com](mailto:LakeOrangeStudy@CFXway.com)

**[www.CFXway.com](http://www.CFXway.com)**