

CONCEPT, FEASIBILITY & MOBILITY STUDY OF THE NORTHEAST CONNECTOR EXPRESSWAY EXTENSION

**ENVIRONMENTAL ADVISORY GROUP
Meeting #2
December 20, 2018**

Project No. 599-215
Contract No. 001209

Concept, Feasibility & Mobility Study

This meeting, project, or study is being conducted without regard to race, color, national origin, age, sex, religion, disability or family status. Persons wishing to express their concerns relative to compliance by the Central Florida Expressway Authority (CFX) with Title VI may do so by contacting:

Joseph Passiatore
CFX General Counsel
4974 ORL Tower Road
Orlando, FL 32807
407-690-5000

Joe.Passiatore@CFXWay.com

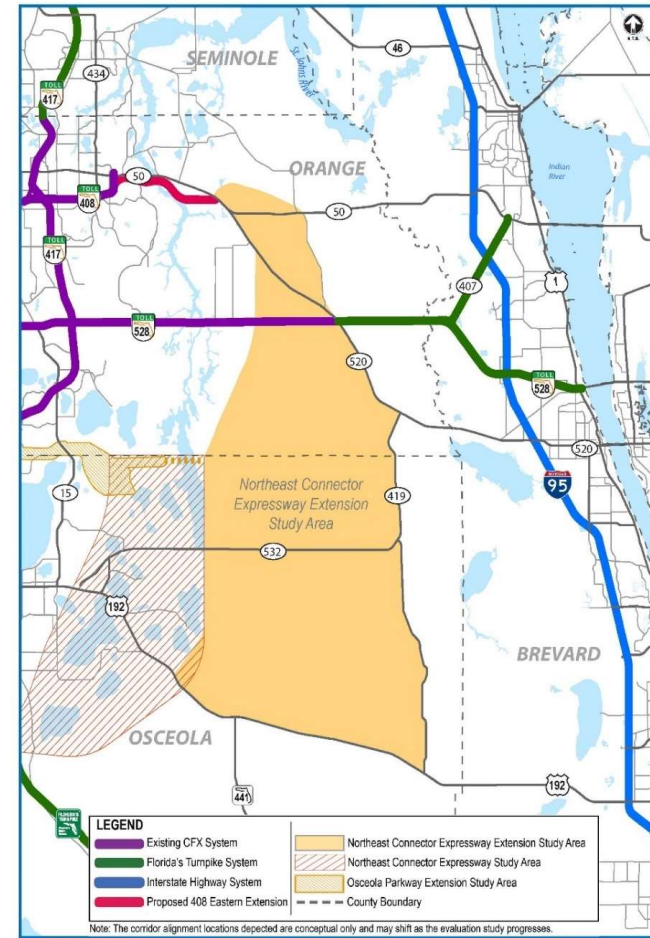
All inquiries or complaints will be handled according to CFX procedure and in a prompt and courteous manner.

Agenda

- ◆ Introductions
- ◆ Project Overview
- ◆ Background and History
- ◆ Project Status to Date



Project Overview



Study Process

Data Collection

Review Existing
Plans

Stakeholder and
Public Input

Develop and Evaluate
Alternatives

Concept and
Feasibility Report



Project Goals

IMPROVE

connections to existing corridors

- SR 50
- SR 520
- SR 528
- US 192

ENHANCE

mobility of growing population and economy

- Long-term planning efforts
 - ECFC Task Force
- Northeast District
- North Ranch Sector Plan
- Harmony
- Viera

PROVIDE

for incorporation of transit options

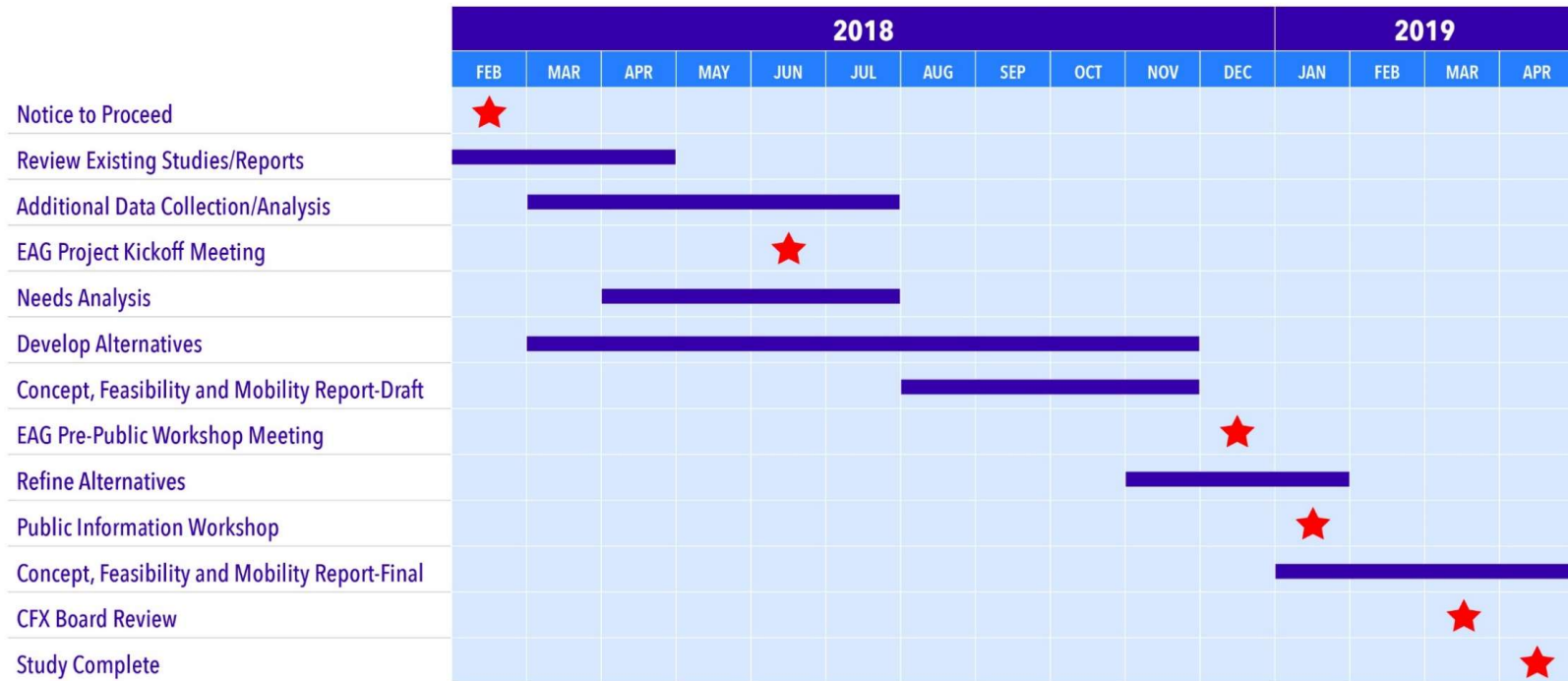
- Local, state and regional plans
 - CFX Master Plan
 - ECFC Task Force
 - Osceola County
 - MPO Alliance
- Close coordination with future land-use development

PROMOTE

regional system connectivity

- Current and long-term
 - OCX Master Plan
 - Northeast Connector Expressway
 - Future corridors

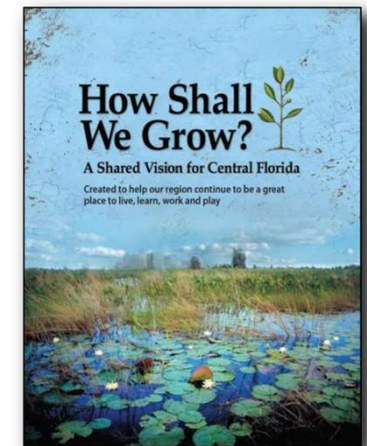
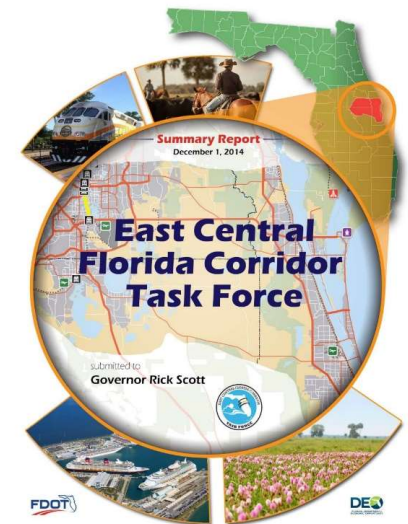
Project Schedule



- ◆ NTP – February 2018
- ◆ 15-month schedule
- ◆ Stakeholder coordination
- ◆ EAG meetings
- ◆ Public Information Workshop
- ◆ Coordinate with ongoing studies

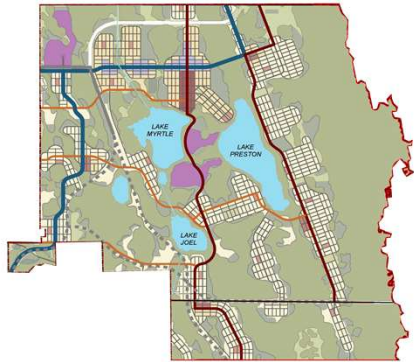
Background and History

- ◆ East Central Florida Corridors Task Force
 - Executive order by Governor Scott
 - Advance statewide corridor initiative in East Central Florida
 - Collaborative effort between FDOT and regional partners
 - Envision, plan and expand major corridors over the next 50 years
- ◆ Relationship to How Shall We Grow? (HSWG)
- ◆ Develop corridors in phases:
 - Expand existing corridors such as SR 50, SR 528, SR 520 and US 192
 - Develop new east-west corridors
 - Develop new north-south corridors
- ◆ Potential growth in the region centered on Deseret Ranch
 - North Ranch Master Plan adopted in September 2015



Land Use Considerations

Northeast District



North Ranch



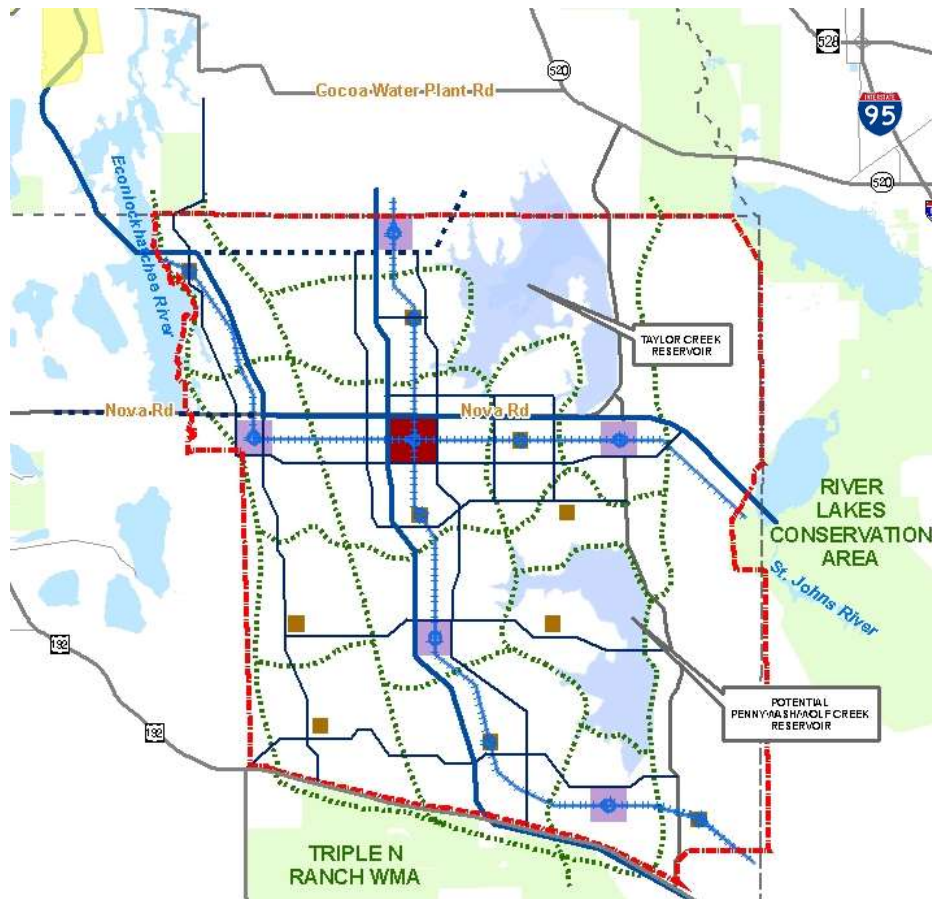
Harmony



Planned Developments

- ◆ Northeast District
 - 19,130 acres
- ◆ North Ranch Master Plan
 - 132,989 acres
- ◆ Harmony
 - 11,031 acres

North Ranch Master Plan

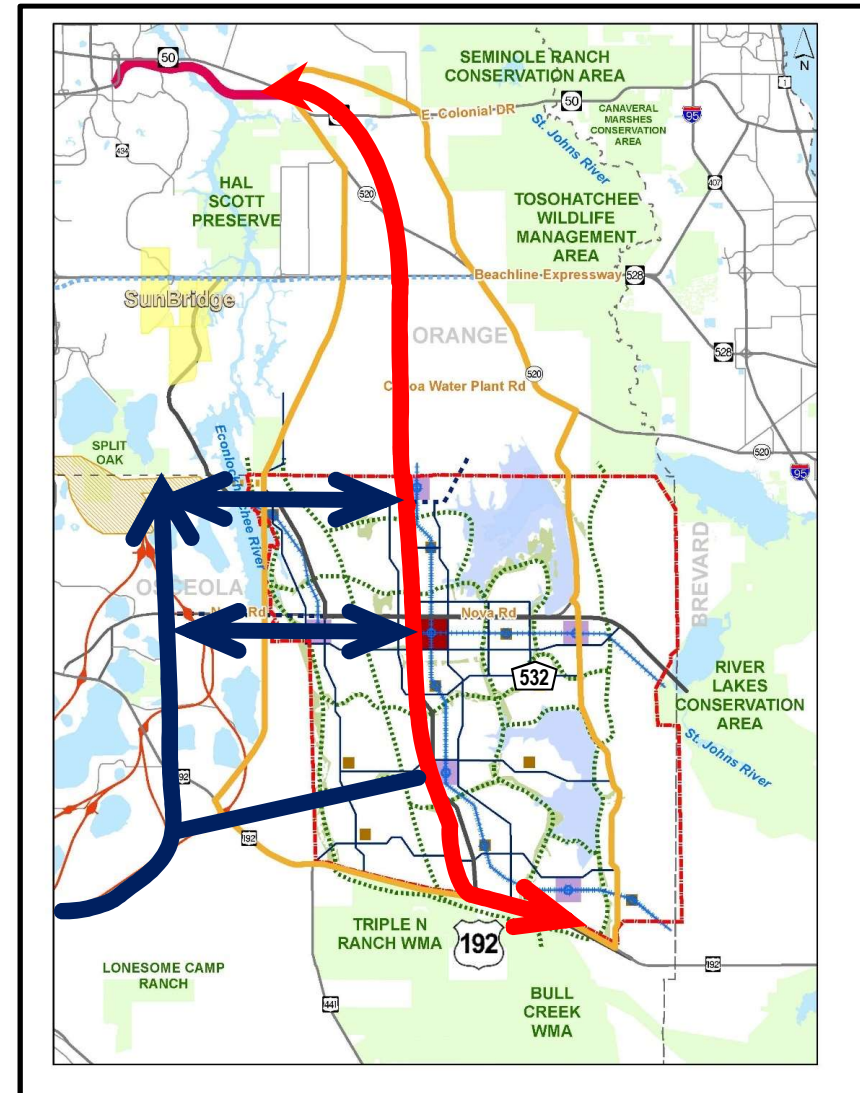


Transportation Framework

- ◆ Limited access facilities
- ◆ Multi-modal corridors
 - Roadway, bike, ped, transit
- ◆ Commuter rail
- ◆ Greenways and trails

Corridor Options

- ◆ North Ranch Corridor
- ◆ Task Force “Corridor I”
- ◆ Northern project limit
- ◆ Northeast Connector Expressway
- ◆ East-West connections



Stakeholder Outreach

- ◆ CFX
- ◆ Orange County
- ◆ Osceola County
- ◆ Brevard County
- ◆ FDOT
 - District 5
 - Florida's Turnpike Enterprise
- ◆ MetroPlan Orlando
- ◆ Space Coast TPO
- ◆ City of Cocoa
- ◆ Deseret Ranches
- ◆ Viera
- ◆ Harmony

CENTRAL
FLORIDA
EXPRESSWAY
AUTHORITY



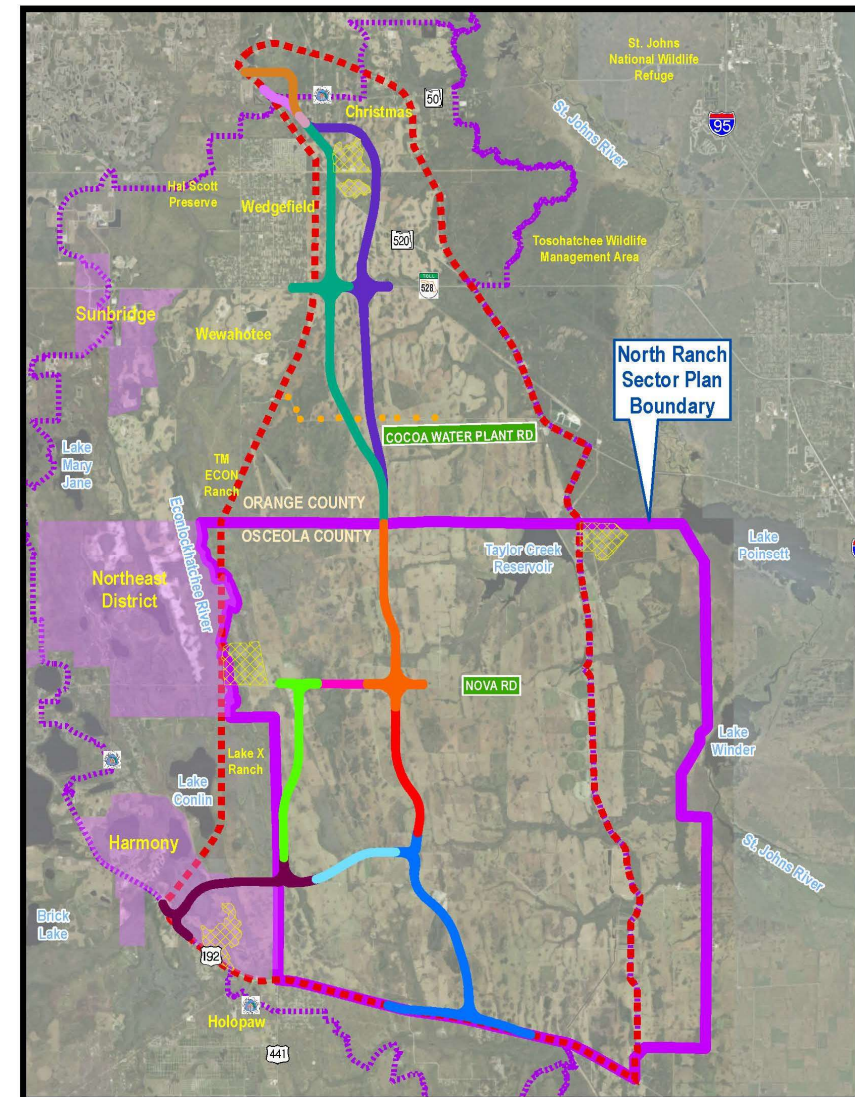
EAG Input to Date

- ◆ Consider broader context of wildlife corridors and movement
- ◆ Add Caracara to list of species
- ◆ Minimize/avoid environmental lands in Orange County
- ◆ Consider effects/impacts of east-west connections
- ◆ Independent utility from NEC
- ◆ Future travel demand and traffic
 - With and without NEC
- ◆ Identify overpasses/crossovers upfront
- ◆ Need to get SJRWMD input
- ◆ Seems more logical to extend NEC
- ◆ Identify agencies involved in controlled-burning and consider smoke corridors
- ◆ Glad to see trails are being considered
 - Also consider underpasses for trail crossings

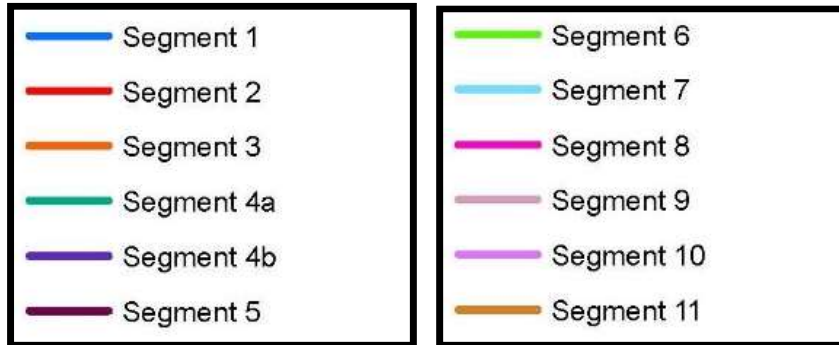


Corridor Segments

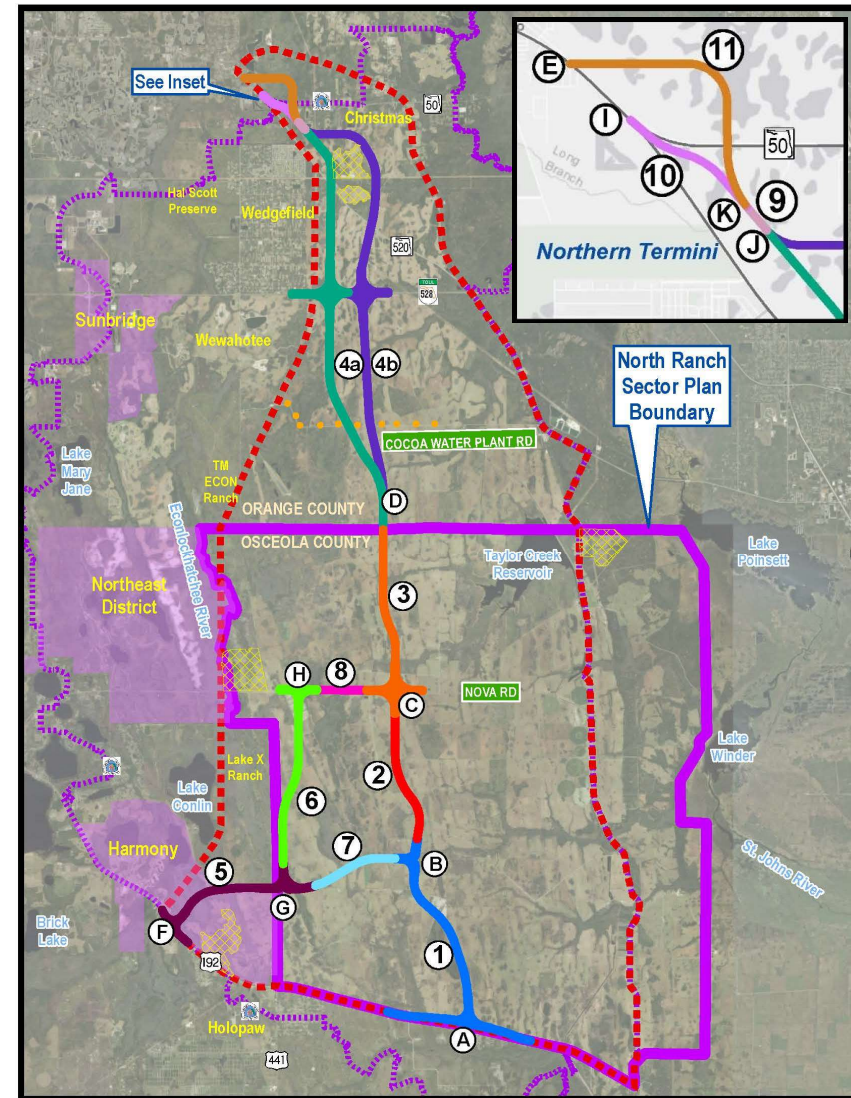
- ◆ Project orientation is north-south
 - US 192 to SR 50/SR 520
 - Consistent with North Ranch and Task Force
- ◆ Alternative US 192 terminus at Harmony
 - Flexibility to connect to NEC and Turnpike
- ◆ Connections to future corridors
 - Osceola Parkway
 - Corridor F (Nova Road) to I-95
- ◆ Alternative alignments in Orange County
 - Minimize/avoid impacts to human and natural environment
- ◆ Northern terminus options
 - SR 408 East Extension (CFX)
 - Colonial Parkway (FTE)
- ◆ Interchange locations
 - US 192, Corridor F (Nova Road), SR 528
 - Segment to segment where needed



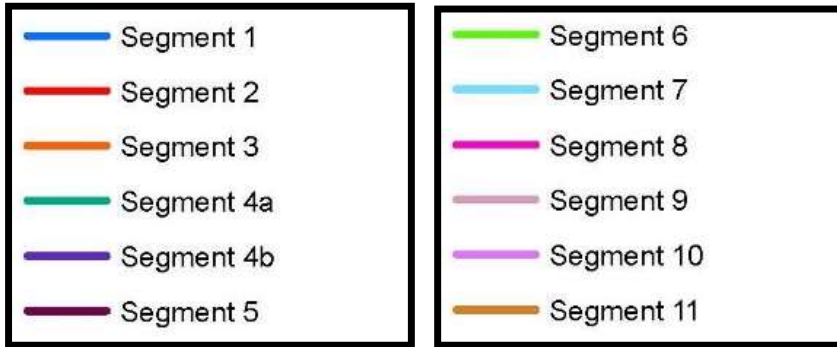
Corridor Segments



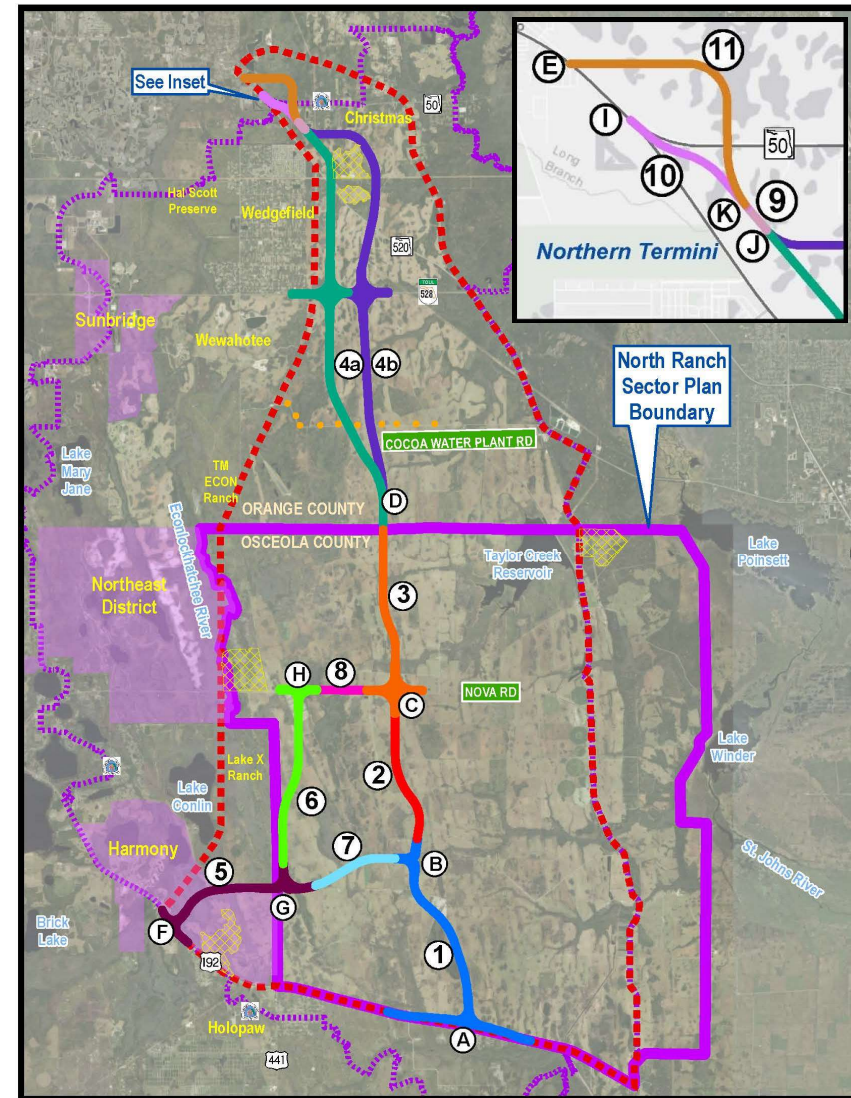
Segment	From	To
1	US 192 (Node A)	Node B
2	Node B	Nova Rd (Node C)
3	Nova Rd (Node C)	North of Osceola Co. Line (Node D)
4a	North of Osceola Co. Line (Node D)	Node J
4b	North of Osceola Co. Line (Node D)	Node J
5	US 192 / NEC Interchange (Node F)	Node G
6	Node G	Node H
7	Node G	Node B
8	Node H	Node C
9	Node J	Node K
10	Node K	Node I
11	Node K	Node E



Corridor Alternatives

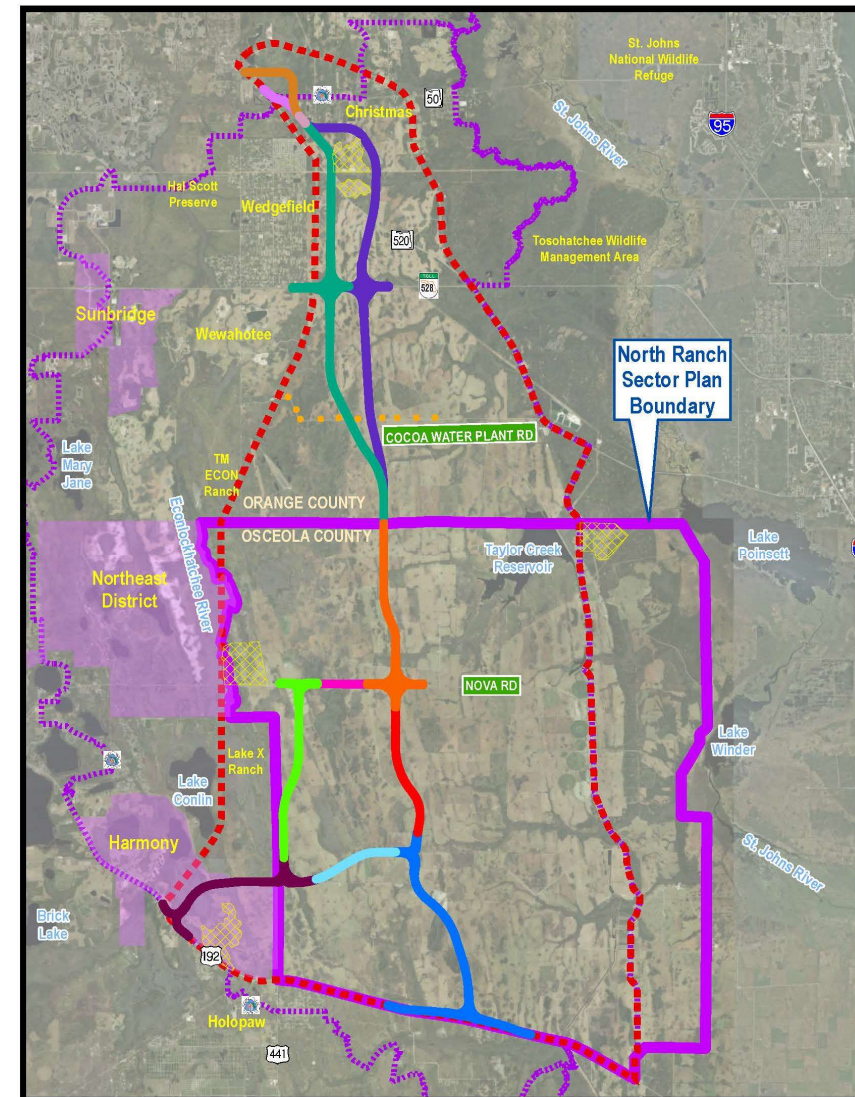


	Segments										
Alternative 1	1	2	3	4a	9	10					
Alternative 2	1	2	3	4a	9	11					
Alternative 3	1	2	3	4b	9	10					
Alternative 4	1	2	3	4b	9	11					
Alternative 5	5	6	8	3	4a	9	10				
Alternative 6	5	6	8	3	4a	9	11				
Alternative 7	5	6	8	3	4b	9	10				
Alternative 8	5	6	8	3	4b	9	11				
Alternative 9	5	7	2	3	4a	9	10				
Alternative 10	5	7	2	3	4a	9	11				
Alternative 11	5	7	2	3	4b	9	10				
Alternative 12	5	7	2	3	4b	9	11				



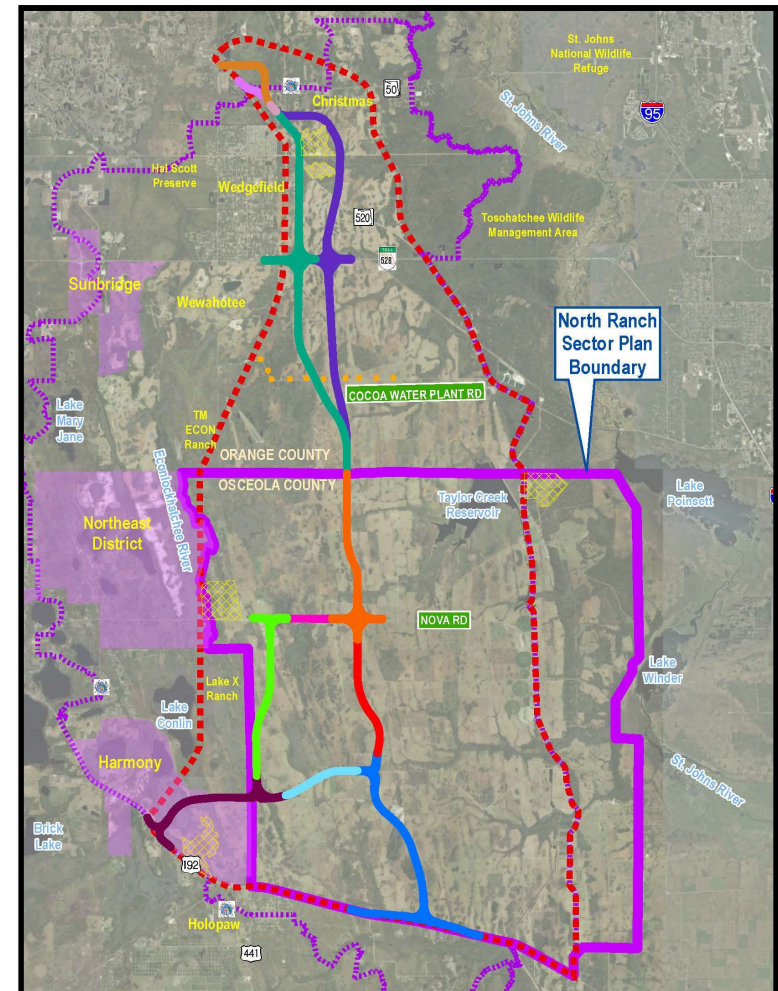
Corridor Alternatives

- ◆ Project length: 37 to 41.5 miles
- ◆ Right-of-way: 2,785 to 3,090 acres
- ◆ Wetlands: 460 to 855 acres
- ◆ Floodplains: 790 to 1,450 acres
- ◆ Conservation areas: 72 to 345 acres
- ◆ Federal-listed species
 - Crested caracara, Florida scrub jay, red cockaded woodpecker, Everglade snail kite, Florida grasshopper sparrow, wood stork, eastern indigo snake
- ◆ State-listed species
 - Gopher tortoise, Sherman's fox squirrel, Southeastern American kestrel, burrowing owl, wading birds



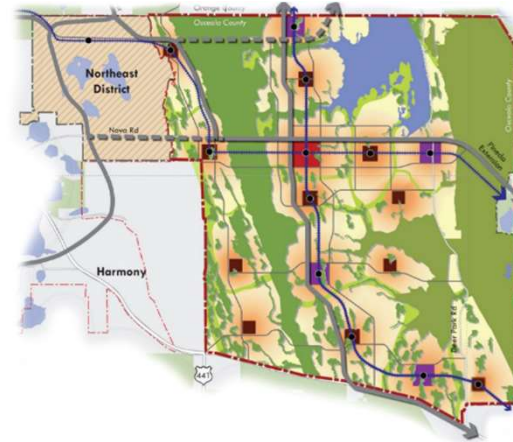
Concept Development

- ◆ Conceptual design
 - Mainline: 500-foot wide right-of-way (R/W)
 - Interchanges: R/W consistent with other system interchanges for planning purpose
 - Grade-separations (Bridges)
 - ▶ North Ranch Transportation Framework
 - ▶ Cross roads, natural features
 - Connections to existing and planned facilities
- ◆ Right-of-way needs for study alternatives
 - Foundation for future studies
 - Potential right-of-way agreement(s)
 - Documentation in long-range plans
- ◆ Continued coordination
 - Adjacent projects
 - Agency stakeholders



Transit Considerations

- ◆ Regional Coordination
 - Central Florida MPO Alliance
 - ▶ Regional Transit Study
 - Osceola County
 - ▶ North Ranch Transit Plan
- ◆ Plan for the future
 - Park and Ride lots
 - Station locations
- ◆ Consistent with CFX Master Plan



Upcoming Public Meetings

◆ January 22, 2019

- Wedgfield K-8 School
3835 Bancroft Blvd
Orlando, FL 32833
- 5:30 p.m. – 7:30 p.m.



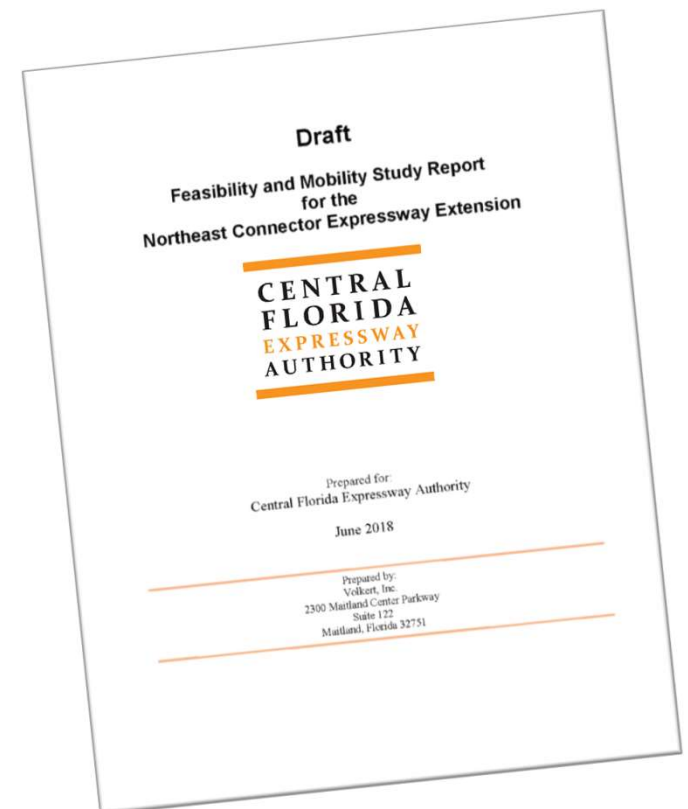
◆ January 24, 2019

- Harmony High School
3601 Arthur J Gallagher Blvd
St. Cloud, FL 34771
- 5:30 p.m. – 7:30 p.m.



Study Report

- ◆ Concept, Feasibility and Mobility Study Report
 - Document the analysis, conclusions and recommendations
- ◆ Incorporate findings into local adopted plans
 - Orange and Osceola County Comp Plans
 - Long-Range Transportation Plans
- ◆ Background for future studies
- ◆ Foundation for establishing future right-of-way requirements
- ◆ Study complete: Early Spring 2019



Thank You Questions?

Project website:

<https://www.cfxway.com/agency-information/plans-studies/project-studies/northeast-connector-expressway-extension/>

For More Information, Contact:

Kathy Putnam

Public Involvement Coordinator

Email: conceptstudies@cfxway.com

Hotline: 407-802-3210

