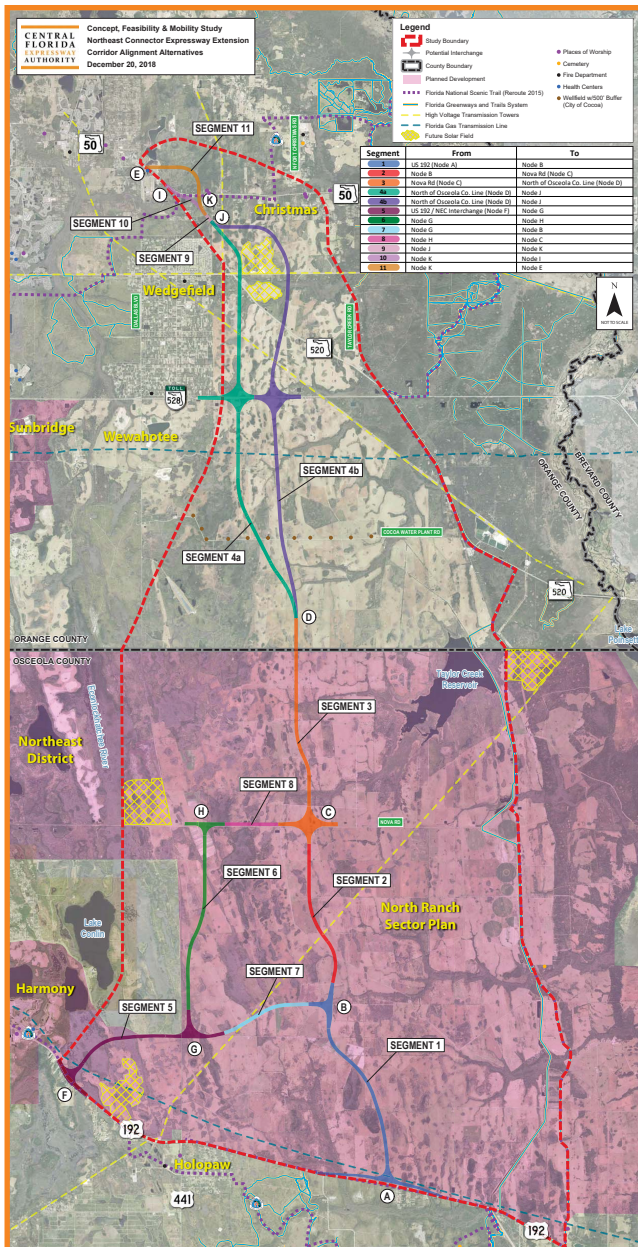


## NEW STUDY CONSIDERS FUTURE CONNECTIVITY NEEDS

Since February 2018 the Central Florida Expressway Authority (CFX) has been conducting a Concept, Feasibility and Mobility Study of the Northeast Connector Expressway Extension. The purpose of the study is to address transportation demand and mobility in eastern Orange and Osceola counties in the year 2045 and beyond. The study is scheduled to finish in April 2019.



## PROJECT DESCRIPTION

The proposed Northeast Connector Expressway Extension study area generally extends from US 192 in Osceola County to the existing State Road 50/SR 520 intersection in Orange County, a distance of approximately 30 miles. The study area is generally bound by the Econlockhatchee River to the west and Deer Park/Nova Road/SR 520 to the east.

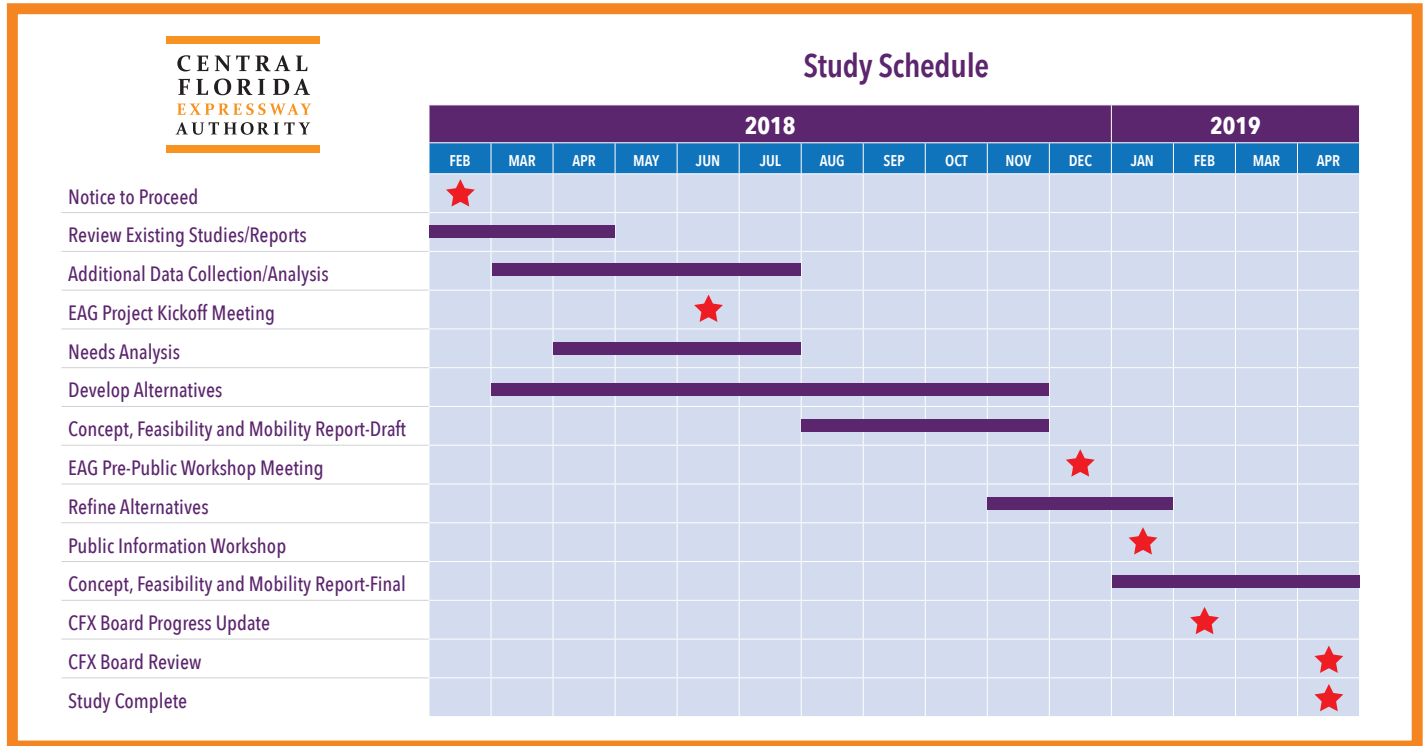
## CORRIDOR ALIGNMENT ALTERNATIVES

The study has identified several potential corridor alignment alternatives as shown in the Table below. These alternatives were developed based on the initial evaluation of potential environmental and social constraints associated with the various corridor alignment segments.

Alternative	Segments											
	1	2	3	4a	9	10	11	12	13	14	15	16
Alternative 1	1	2	3	4a	9	10						
Alternative 2	1	2	3	4a	9	11						
Alternative 3	1	2	3	4b	9	10						
Alternative 4	1	2	3	4b	9	11						
Alternative 5	5	6	8	3	4a	9	10					
Alternative 6	5	6	8	3	4a	9	11					
Alternative 7	5	6	8	3	4b	9	10					
Alternative 8	5	6	8	3	4b	9	11					
Alternative 9	5	7	2	3	4a	9	10					
Alternative 10	5	7	2	3	4a	9	11					
Alternative 11	5	7	2	3	4b	9	10					
Alternative 12	5	7	2	3	4b	9	11					

# GOALS OF THE PROJECT

The goal of the Northeast Connector Expressway Extension is to enhance regional connectivity and mobility by providing connections between existing and future east-west corridors within the study area. These corridors include SR 50 (Colonial Drive), SR 408 (Spessard L. Holland Expressway), SR 520, SR 528 (Martin B. Andersen Beachline Expressway), and US 192 (E. Irlo Bronson Memorial Highway).



Visit the study  
webpage at:  
<https://bit.ly/2PAsOwJ>

## PARTICIPATING IN THE STUDY

Public involvement is an integral part of the assessment process. Substantial coordination with stakeholders has taken place, as well as two meetings of the Environmental Advisory Group. Public Workshops are scheduled for:

**Tuesday, January 22, 2019**  
5:30 p.m. - 7:30 p.m.  
Wedgefield K8 Gymnasium  
3835 Bancroft Blvd.  
Orlando, FL 32833

**Thursday, January 24, 2019**  
5:30 p.m. - 7:30 p.m.  
Harmony High School Cafeteria  
3601 Arthur J. Gallagher Blvd.  
St. Cloud, FL 34771

**TO FIND OUT MORE ABOUT THE STUDY, CONTACT:** **Kathy Putnam**  
Public Involvement Coordinator  
Phone: (407) 802-3210  
Email: [ConceptStudies@CFXway.com](mailto:ConceptStudies@CFXway.com)

**CENTRAL FLORIDA EXPRESSWAY AUTHORITY**  
4974 ORL Tower Road  
Orlando, FL 32807  
Phone: (407) 690-5000  
Fax: (407) 690-5011  
Email: [Info@CFXway.com](mailto:Info@CFXway.com)

 @CFXConceptStudies

*Public participation is solicited without regard to race, color, national origin, age, sex, religion, disability or family status. Para más información en español acerca del proyecto, por favor comuníquese con Alicia Arroyo al 407-509-0231 o por correo electrónico [Alicia.Arroyo@QCAusa.com](mailto:Alicia.Arroyo@QCAusa.com).*