

The logo for the Central Florida Expressway Authority is centered in the upper half of the image. It consists of a white rectangular box with an orange horizontal bar at the top and another at the bottom. Inside the box, the words "CENTRAL FLORIDA" are stacked above "EXPRESSWAY", which is above "AUTHORITY". "EXPRESSWAY" is written in orange, while the other words are in black. The background of the entire slide is a photograph of a multi-level concrete highway interchange under a clear blue sky, with a grassy embankment on the right side.

CENTRAL
FLORIDA
EXPRESSWAY
AUTHORITY

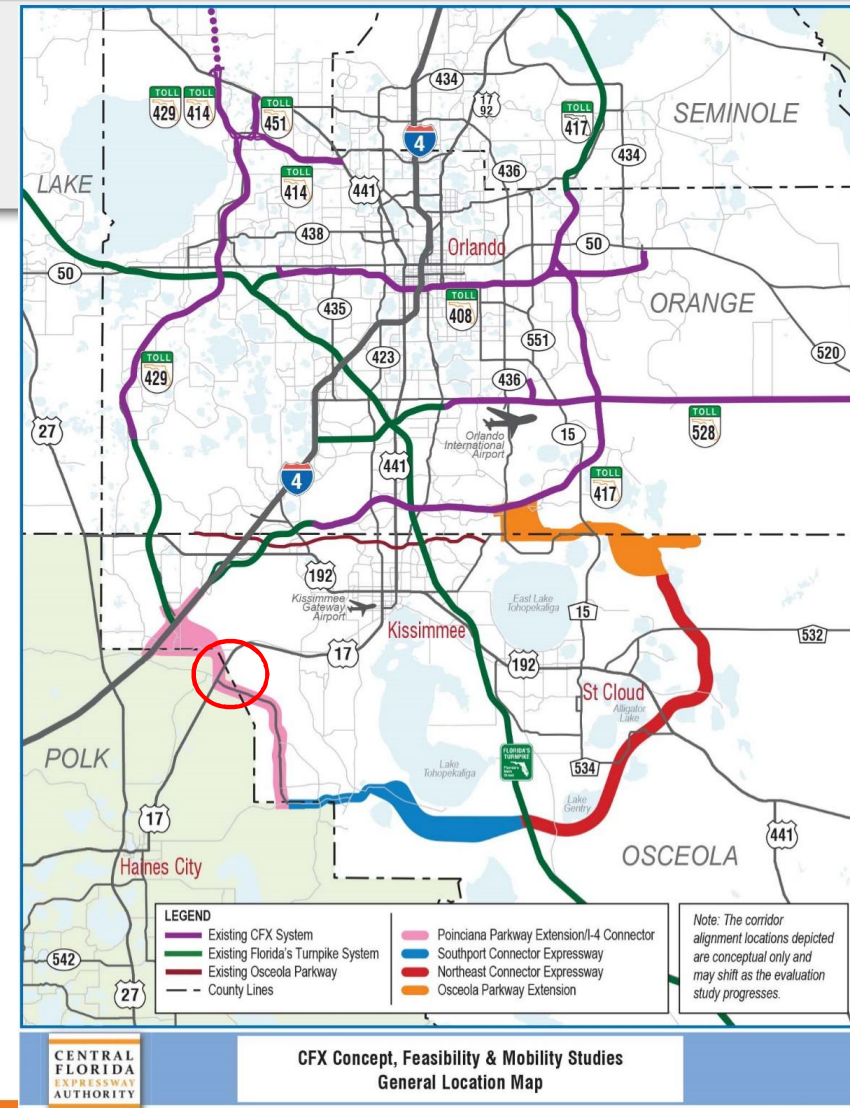
Poinciana Parkway Extension
Project Development & Environment Study

Polk County Agenda Review Workshop

— April 12, 2019 —

Background

- 2005 – Osceola County Comprehensive Plan: New corridors around growth boundary
- 2012 – Osceola County Expressway Authority (OCX): 2040 Master Plan
- 2016 – Poinciana Parkway Connected to US 17/92
- March 2018 – CFX finished Feasibility Studies
 - Authorized Poinciana Parkway Extension PD&E study for first phase to CR 532
- July 2018 – PD&E Study began



PD&E Study Methodology

- Follow FDOT PD&E Manual
- Analyze and document potential impacts
 - Physical
 - Natural
 - Social
 - Cultural



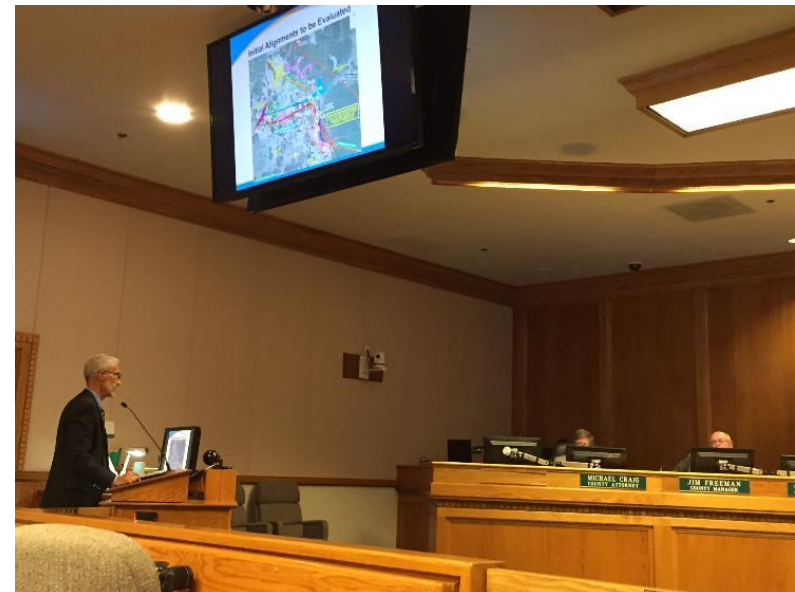
Coordination with Polk County

Concept, Feasibility & Mobility Study

- 7-19-2017 – Project Advisory Group
- 8-8-2017 – Polk County Board of County Commissioners
- 2-1-2018 – Project Advisory Group

PD&E Study

- 7-26-2018 – Polk TPO TAC
- 8-9-2018 – Polk TPO Board
- 8-15-2018 – Project Advisory Group
- 10-19-2018 – FDOT District 1 and Polk TPO
- 11-1-2018 – Polk County Staff
- 2-19-2019 – Project Advisory Group
- 3-28-2019 – Polk County Staff



Public Involvement

- Environmental & Project Advisory Groups
- Public Meetings
 - Kick-off Meeting: September 25, 2018
 - Alternatives Meeting: March 14, 2019
 - Public Hearing: August/September 2019
- Board Presentations – CFX, Osceola and Polk Board of County Commissioners
- Stakeholder Meetings
- CFX Study Webpage & Study Facebook Page

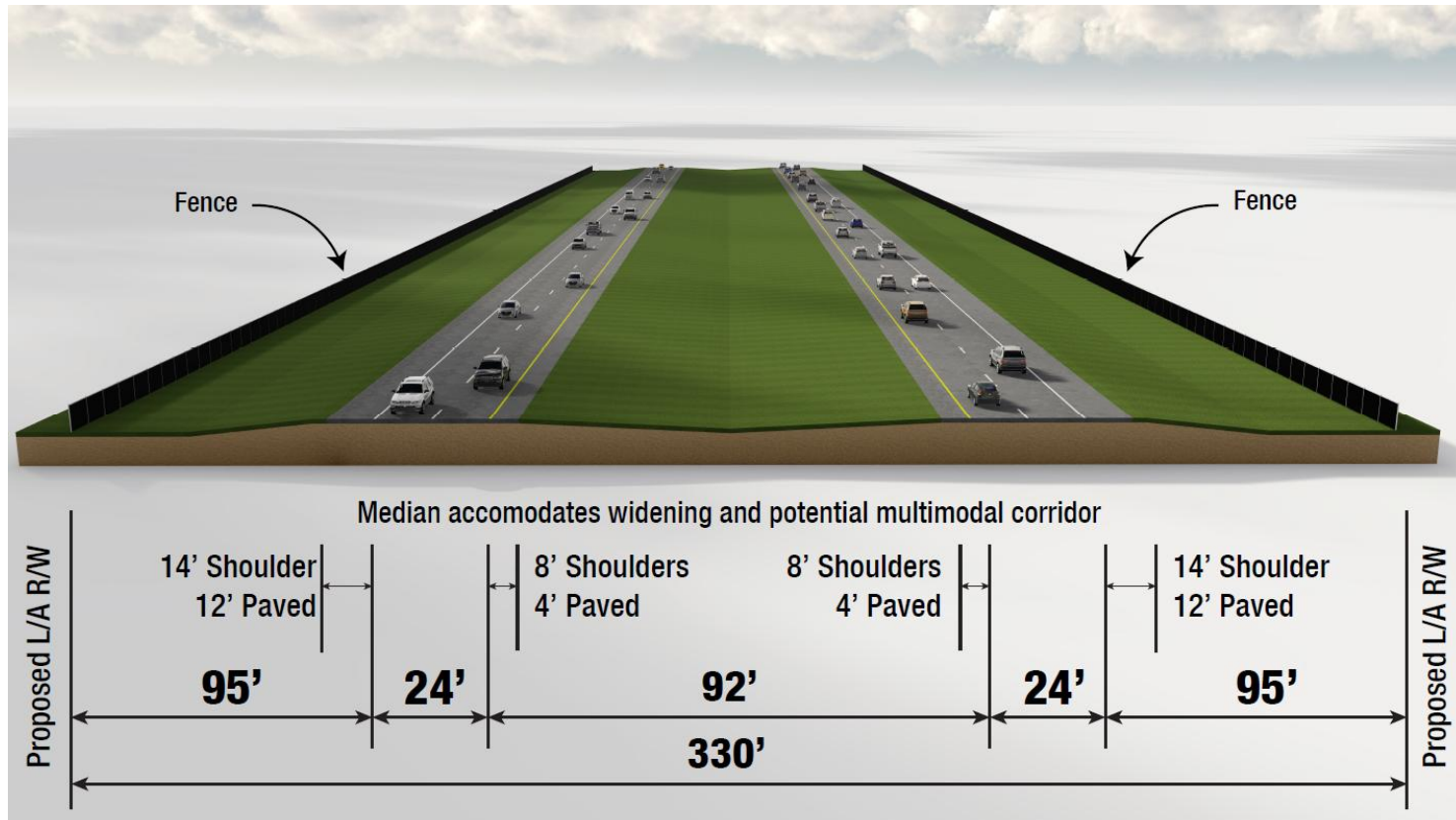


Stakeholder Outreach

- Cassidy Homes
- Loughman Community
- Reunion East CDD

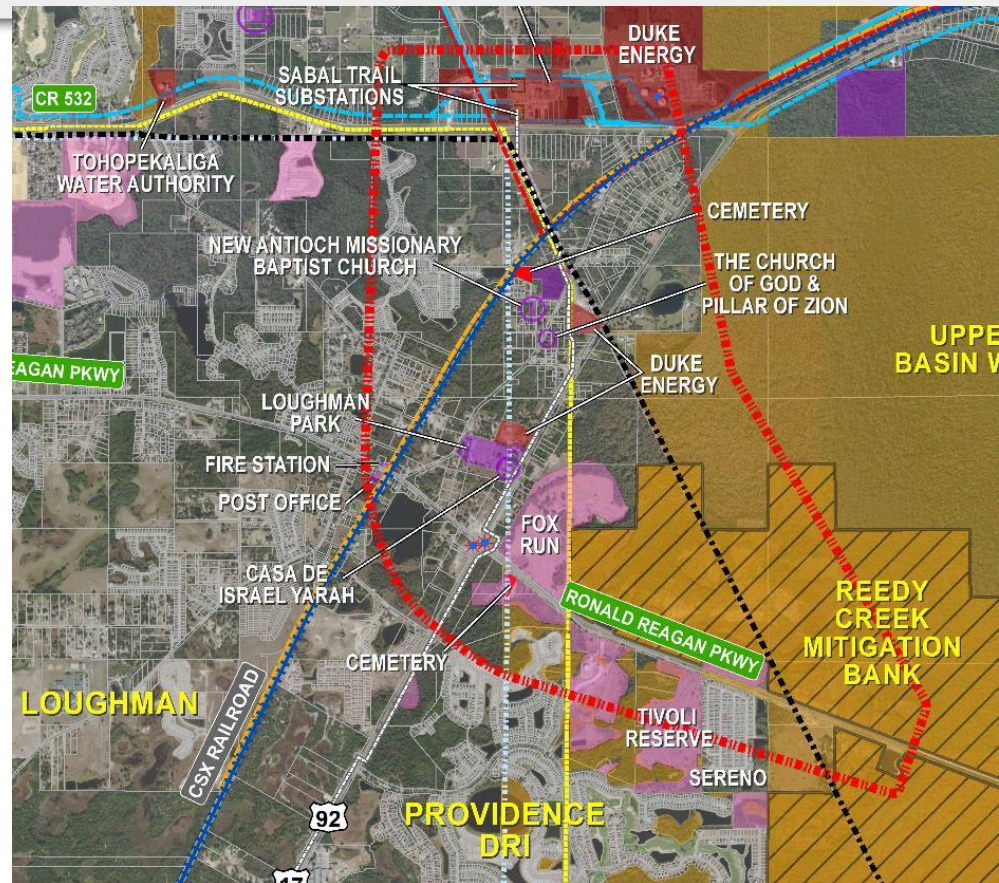


Poinciana Parkway Extension Typical Section



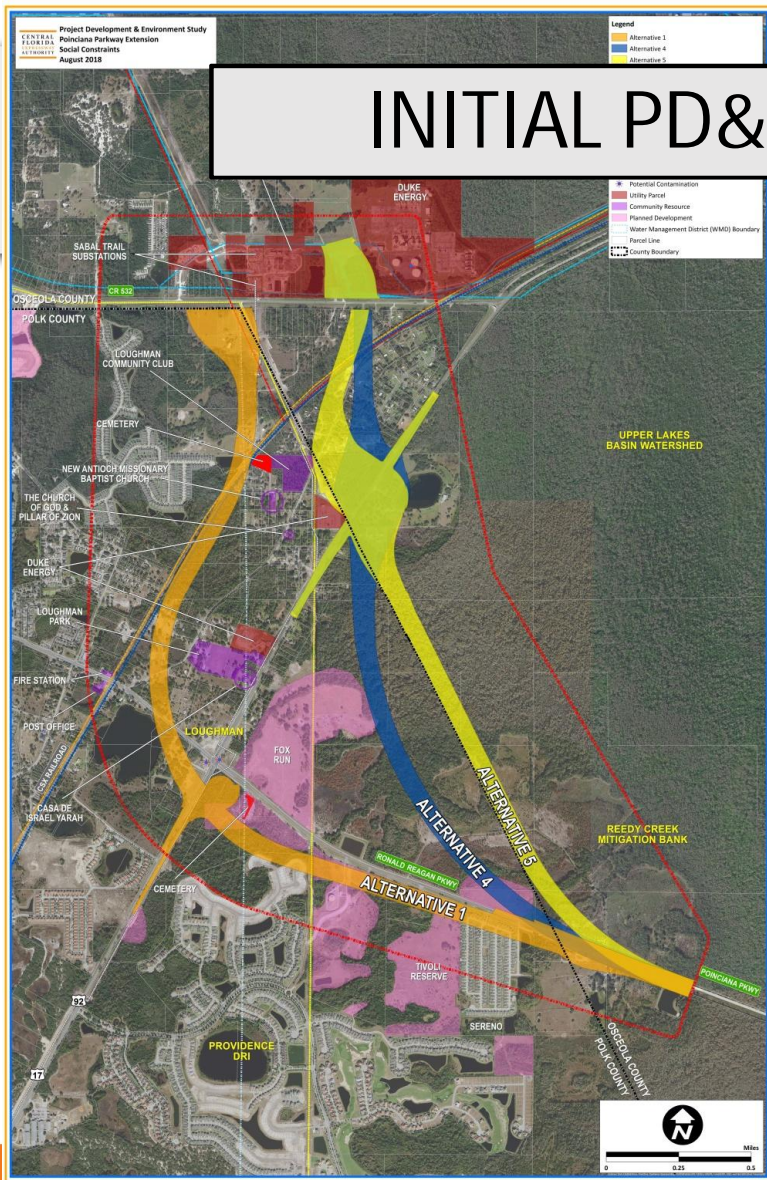
Poinciana Parkway Extension Constraints

- Mitigation Bank
- Wetlands
- Cemeteries
- Places of Worship
- Loughman Park
- Loughman Community
- Power Substations
- Gas Transmission Substations
- Businesses and Residences

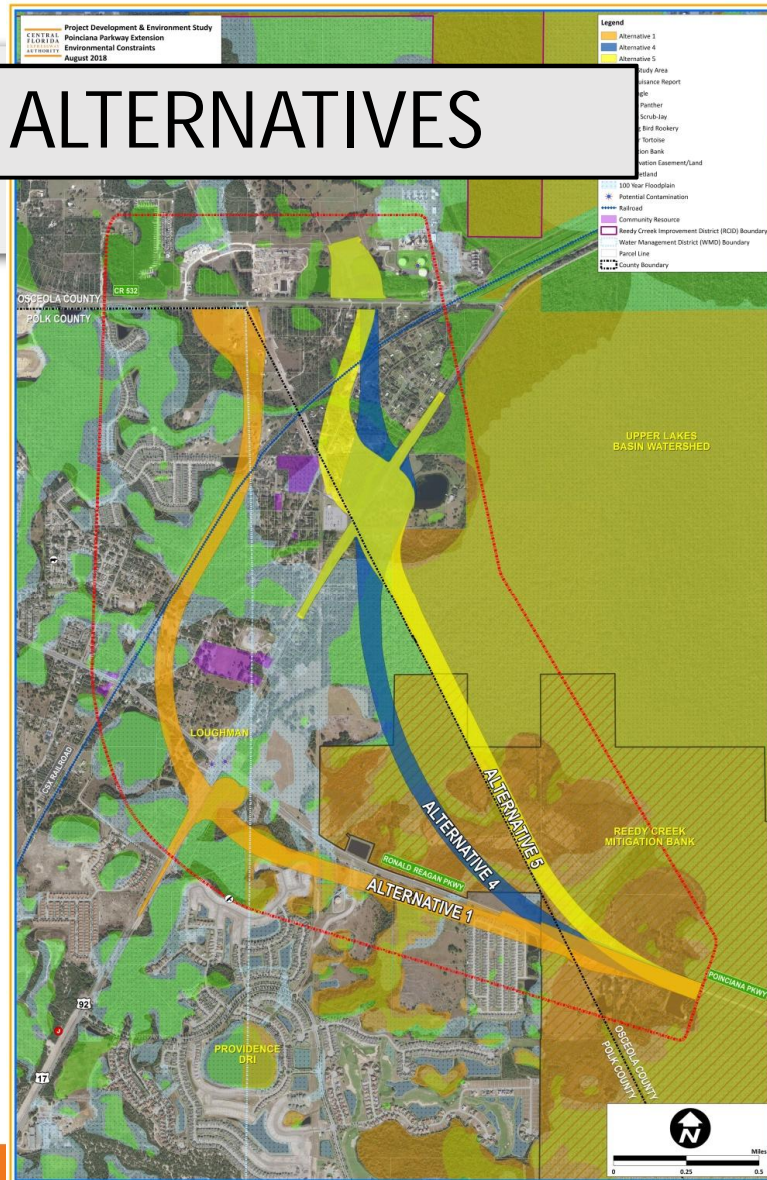


INITIAL PD&E ALTERNATIVES

Social Constraints

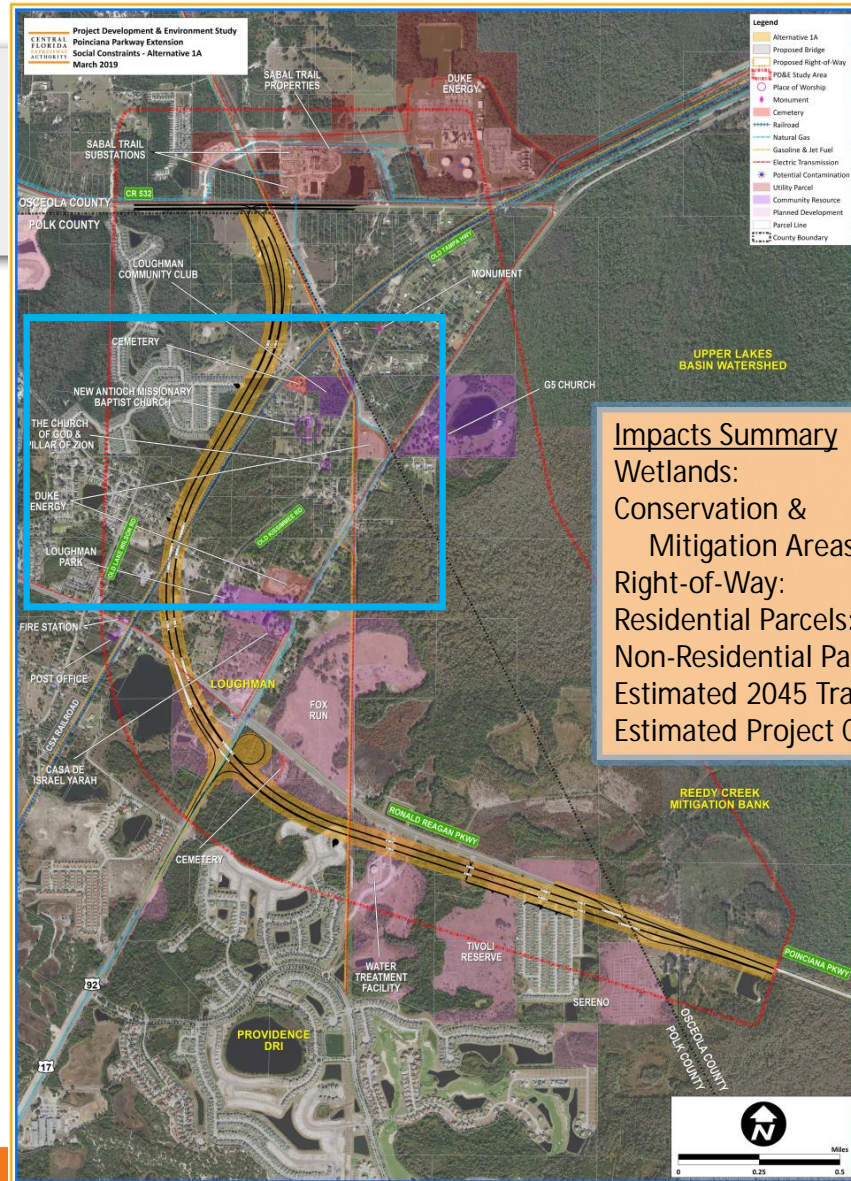
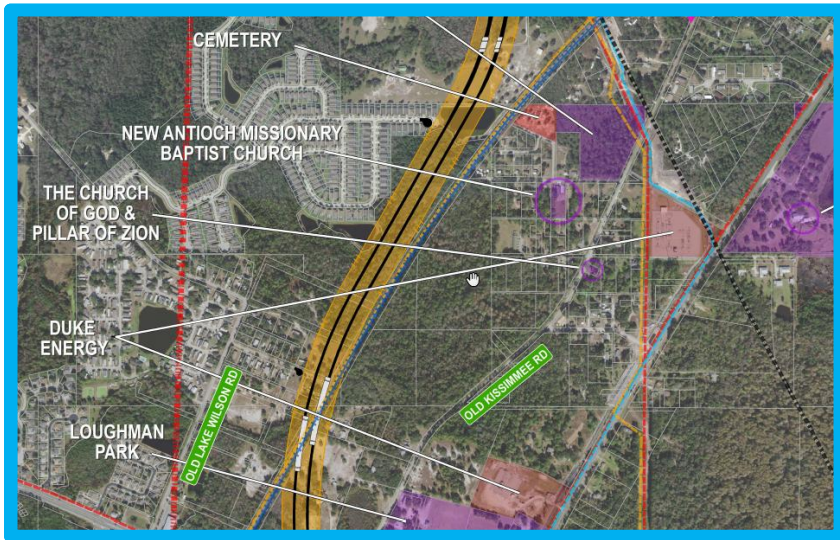


Environmental Constraints



Alternative 1A (Refinement of Alternative 1)

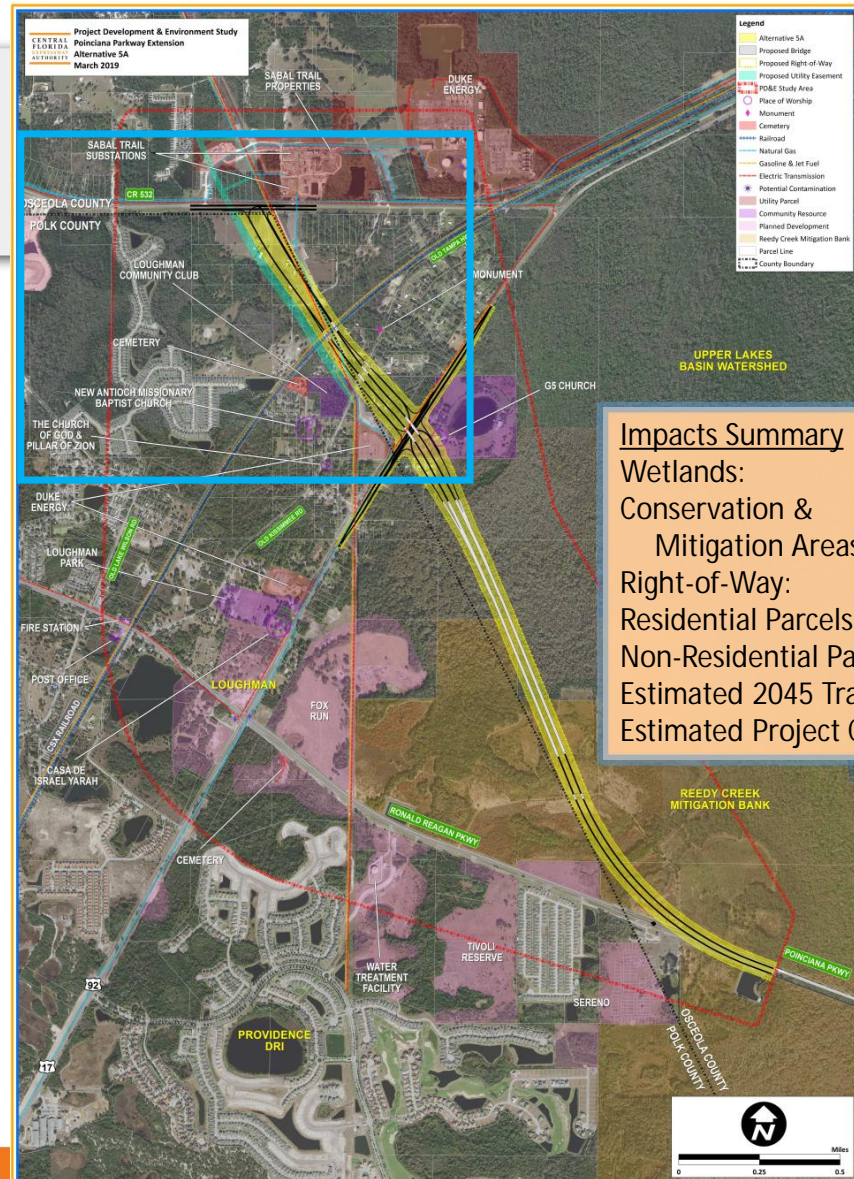
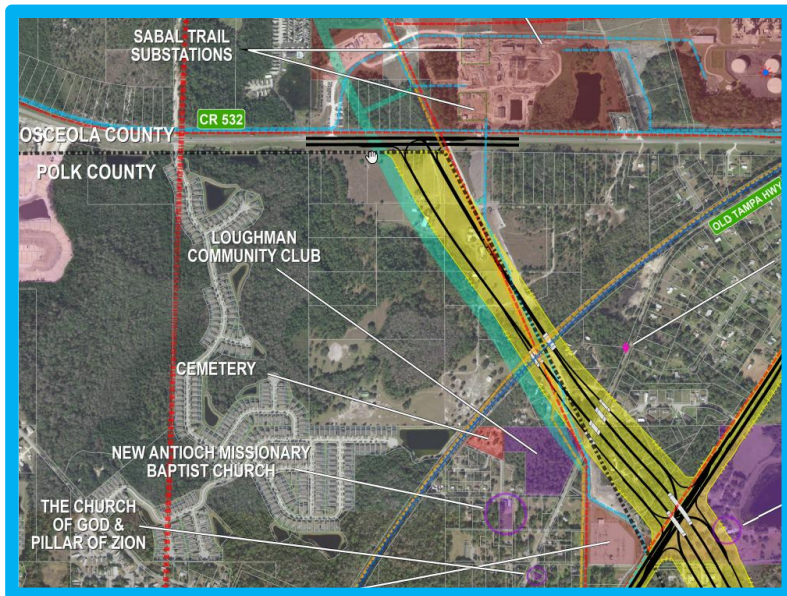
- Move expressway to west side of railroad tracks
 - Less impacts to existing residents



<u>Impacts Summary</u>	
Wetlands:	54 Acres
Conservation & Mitigation Areas:	39 Acres
Right-of-Way:	142 Acres
Residential Parcels:	123 Parcels
Non-Residential Parcels:	24 Parcels
Estimated 2045 Traffic:	18,000 Vehicles
Estimated Project Cost:	\$295 Million

Alternative 5A (Refinement of Alternative 5)

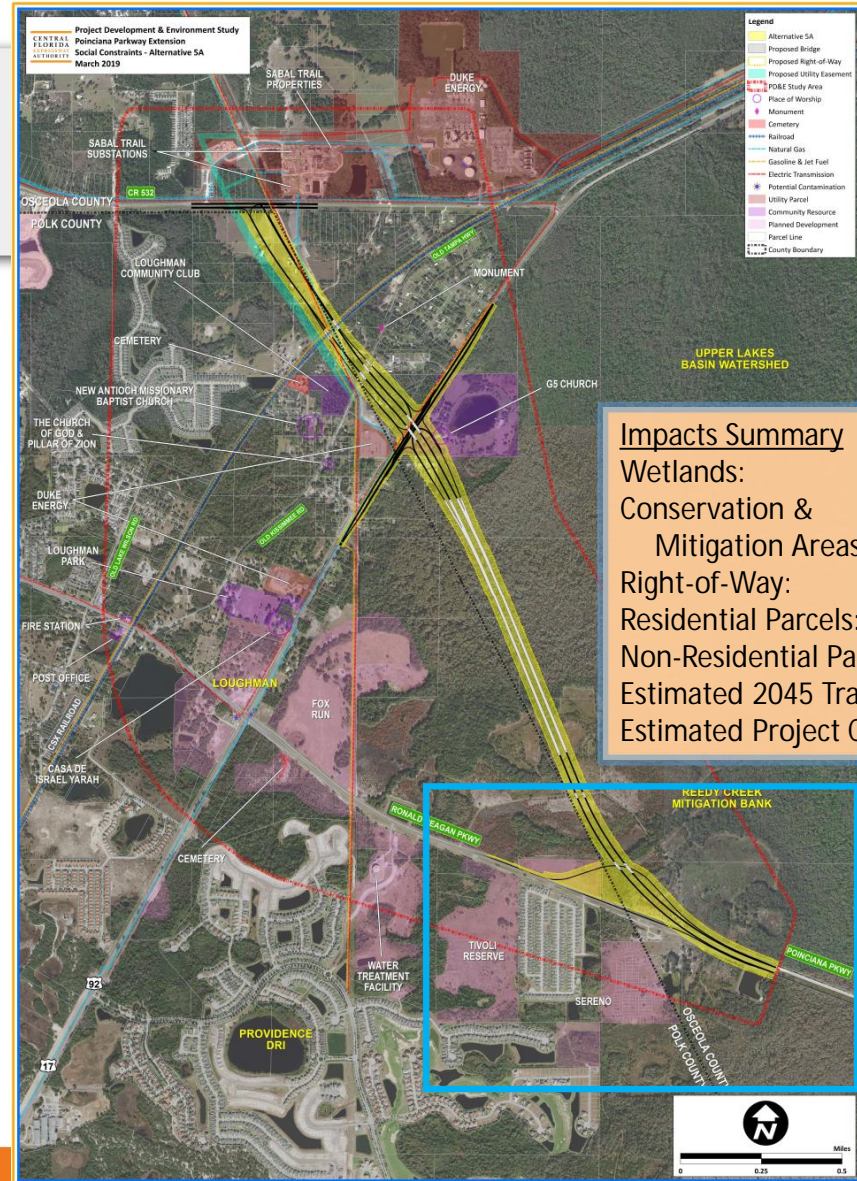
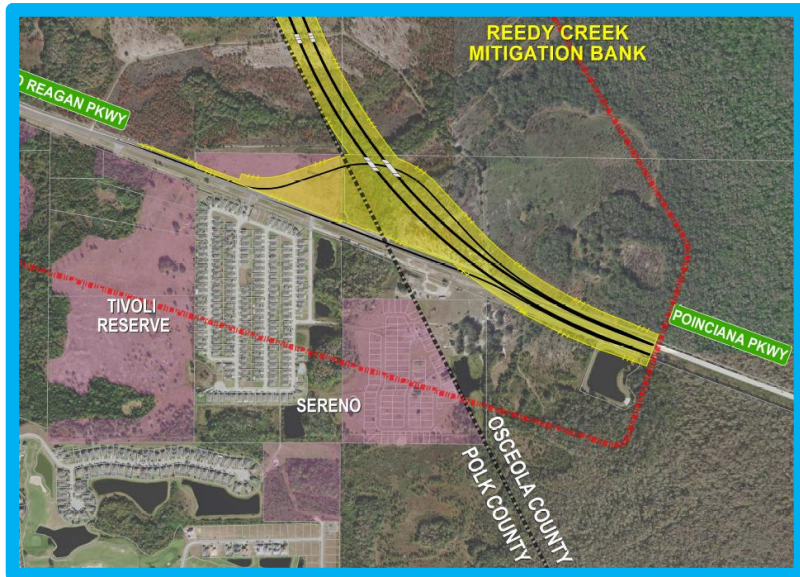
- Shift connection to CR 532 west to bridge over railroad tracks and get down to CR 532



<u>Impacts Summary</u>	
Wetlands:	66 Acres
Conservation & Mitigation Areas:	80 Acres
Right-of-Way:	131 Acres
Residential Parcels:	52 Parcels
Non-Residential Parcels:	8 Parcels
Estimated 2045 Traffic:	24,800 Vehicles
Estimated Project Cost:	\$275 Million

Alternative 5A (Refinement of Alternative 5)

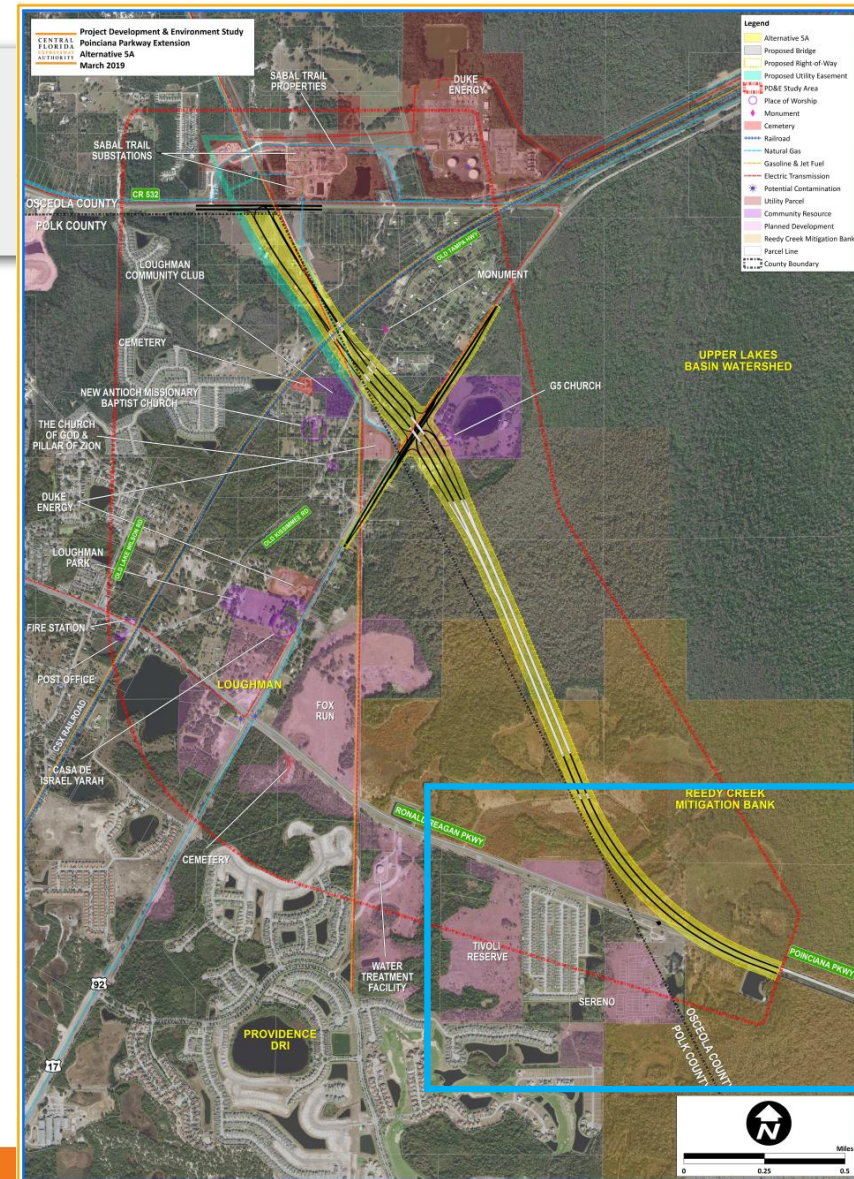
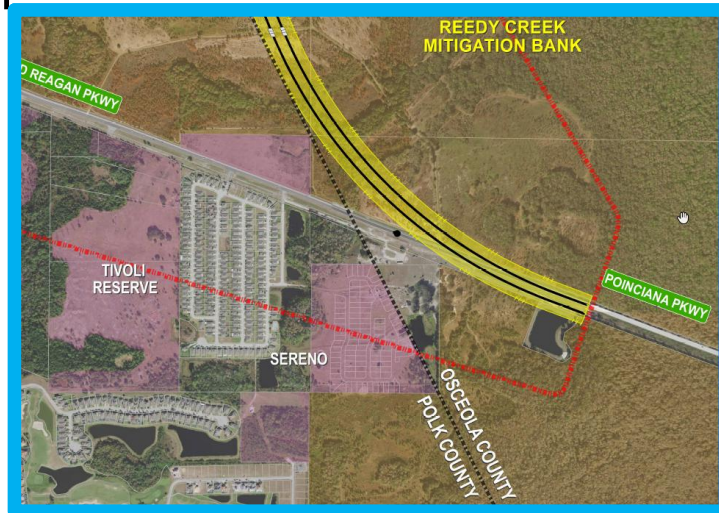
- Evaluate slip ramps to Ronald Reagan Parkway



Impacts Summary	
Wetlands:	68 Acres
Conservation & Mitigation Areas:	90 Acres
Right-of-Way:	148 Acres
Residential Parcels:	87 Parcels
Non-Residential Parcels:	13 Parcels
Estimated 2045 Traffic:	15,200 Vehicles
Estimated Project Cost:	\$309 Million

Alternative 5A

- Bridge over railroad tracks
- No slip ramps
- Lowest social impacts
- Lower natural impacts
- Lowest cost
- Highest traffic



Next Steps

- Receive input on our conclusions
 - Polk County
 - Osceola County
 - CFX Board
- Finalize engineering and environmental analysis
- Prepare engineering and environmental reports
- Conduct Public Hearing in Fall 2019
- Present findings to CFX Board for their decision in Fall 2019

Comments & Questions

For more information contact:
Mary Brooks
Public Involvement Coordinator
407-802-3210

Projectstudies@CFXway.com

CFX web address:

www.CFXway.com

Shortened study web address:

<https://goo.gl/VBpNhr>

Project Development & Environment (PD&E) Study: Poinciana Parkway Extension

Study Documents

Environmental Advisory Group (EAG)

Project Advisory Group (PAG)

Public Meetings

- [Project Schedule](#)
- [Project Development Process](#)
- [Project Fact Sheet](#)
- [Poinciana Parkway Extension PD&E Public Meeting #1 Notice: Sep. 25, 2018](#)
- [Poinciana Parkway Extension PD&E Public Meeting Presentation: Sep. 25, 2018](#)
- [Poinciana Parkway Extension PD&E Study Board Outlined](#)
- [Poinciana Parkway Extension PD&E Study Environmental Board](#)
- [Poinciana Parkway Extension PD&E Study Social Board](#)
- [Final Summary for Poinciana Parkway Extension PD&E Study EAG Meeting on Aug. 15, 2018](#)
- [Final Summary for Poinciana Parkway Extension PD&E Study PAG Meeting on Aug. 15, 2018](#)
- [Final Summary for Poinciana Parkway Extension PD&E Study Kick-Off Public Meeting on September 25, 2018](#)