

The background of the cover is a photograph of a bridge at dusk. The bridge spans across a body of water, with its lights reflecting on the surface. The sky is a deep blue, and the water is calm, showing clear reflections of the bridge and the sky. There are some reeds or grasses in the foreground, partially submerged in the water.

CENTRAL FLORIDA **EXPRESSWAY AUTHORITY**

Final Utility Assessment Report
May 2019

Lake/Orange County Connector (US 27 to SR 429)
Feasibility/Project Development & Environment Study
CFX Project No. 599-225

TABLE OF CONTENTS

1.0	INTRODUCTION	1-1
1.1	PROJECT DESCRIPTION.....	1-1
1.2	PURPOSE & NEED.....	1-1
1.2.1	Purpose	1-1
1.2.1.1	Project Background	1-3
1.2.2	Need.....	1-5
1.2.2.1	System Connectivity/Linkage.....	1-5
1.2.2.2	Anticipated Transportation Demand	1-6
1.2.2.3	Consistency with Local and Regional Plans	1-7
1.2.2.4	Economic Viability and Job Creation	1-9
1.2.2.5	Support Intermodal Opportunities.....	1-9
1.2.2.6	Evacuation and Emergency Services	1-9
2.0	PREFERRED ALTERNATIVE	2-1
2.1	PROJECT SEGMENTATION	2-1
2.2	DESCRIPTION OF THE PREFERRED ALTERNATIVE	2-3
3.0	EXISTING UTILITIES	3-1
4.0	MITIGATION RECOMMENDATIONS	4-1

LIST OF FIGURES

<u>Figure</u>	<u>Page Number</u>
Figure 1-1 - Project Location	1-2
Figure 1-2 - Western Extension Study Corridors	1-3
Figure 1-3 - SR 429 to US 27 Connector Study Corridors	1-4
Figure 2-1 - Segmental Breakdown	2-2
Figure 2-2 - Preferred Alternative	2-4
Figure 2-3 - Preferred Alternative Typical Section	2-5

LIST OF TABLES

<u>Table</u>	<u>Page Number</u>
Table 1-1 – Local Planning Consistency	1-8
Table 3-1 - Existing Utilities	3-2

APPENDICES

Appendix A Potential Utility Conflicts

Appendix B Utility Responses

1.0 INTRODUCTION

1.1 Project Description

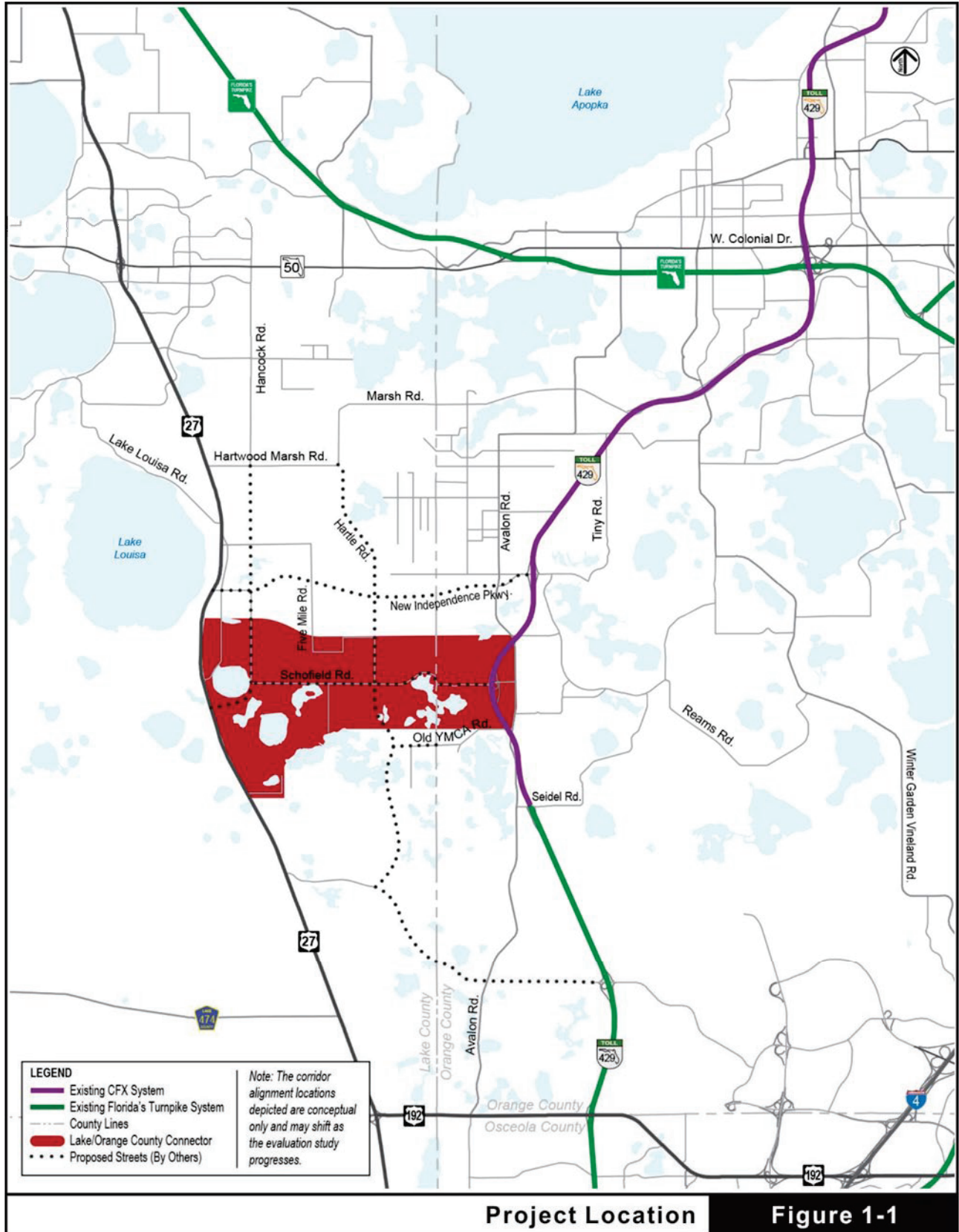
The proposed Lake/Orange County Connector is a strategic transportation investment aimed at supporting existing and future growth in south Lake and west Orange counties. It has been identified as a system expansion project need in the last four consecutive Central Florida Expressway Authority (CFX) master plans, the most current being the 2040 CFX Master Plan. The Orlando-Orange County Expressway Authority (OOCEA), now CFX, completed the 2007 SR 429 to US 27 Connector Concept Development and Evaluation Study which developed various viable corridors/alternatives and identified an unmet need for an east-west connection between US 27 and SR 429. This study will confirm the feasibility of the connector and will conduct a Project Development and Environment (PD&E) Study on defined alignments. **Figure 1-1** illustrates the location of the project.

1.2 Purpose & Need

1.2.1 Purpose

The purpose of the Lake/Orange County Connector PD&E Study is to develop a proposed improvement strategy that is technically sound, environmentally sensitive and publicly acceptable. As with every PD&E Study, emphasis has been placed on the development, evaluation and documentation of detailed engineering and environmental studies including data collection, conceptual design, environmental analyses, project documentation and the preparation of a Preliminary Engineering Report (PER).

SECTION 1 – INTRODUCTION

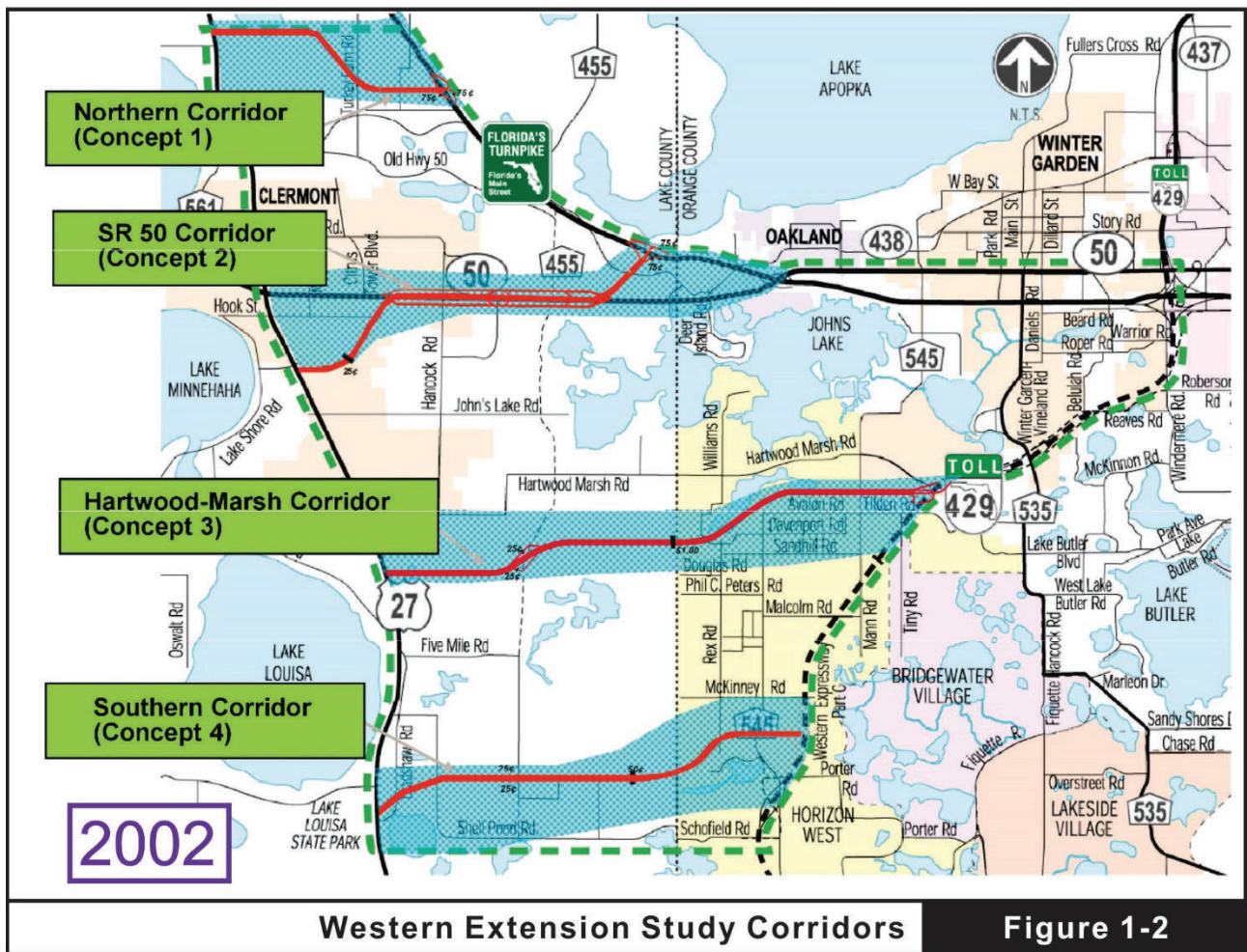


Project Location

Figure 1-1

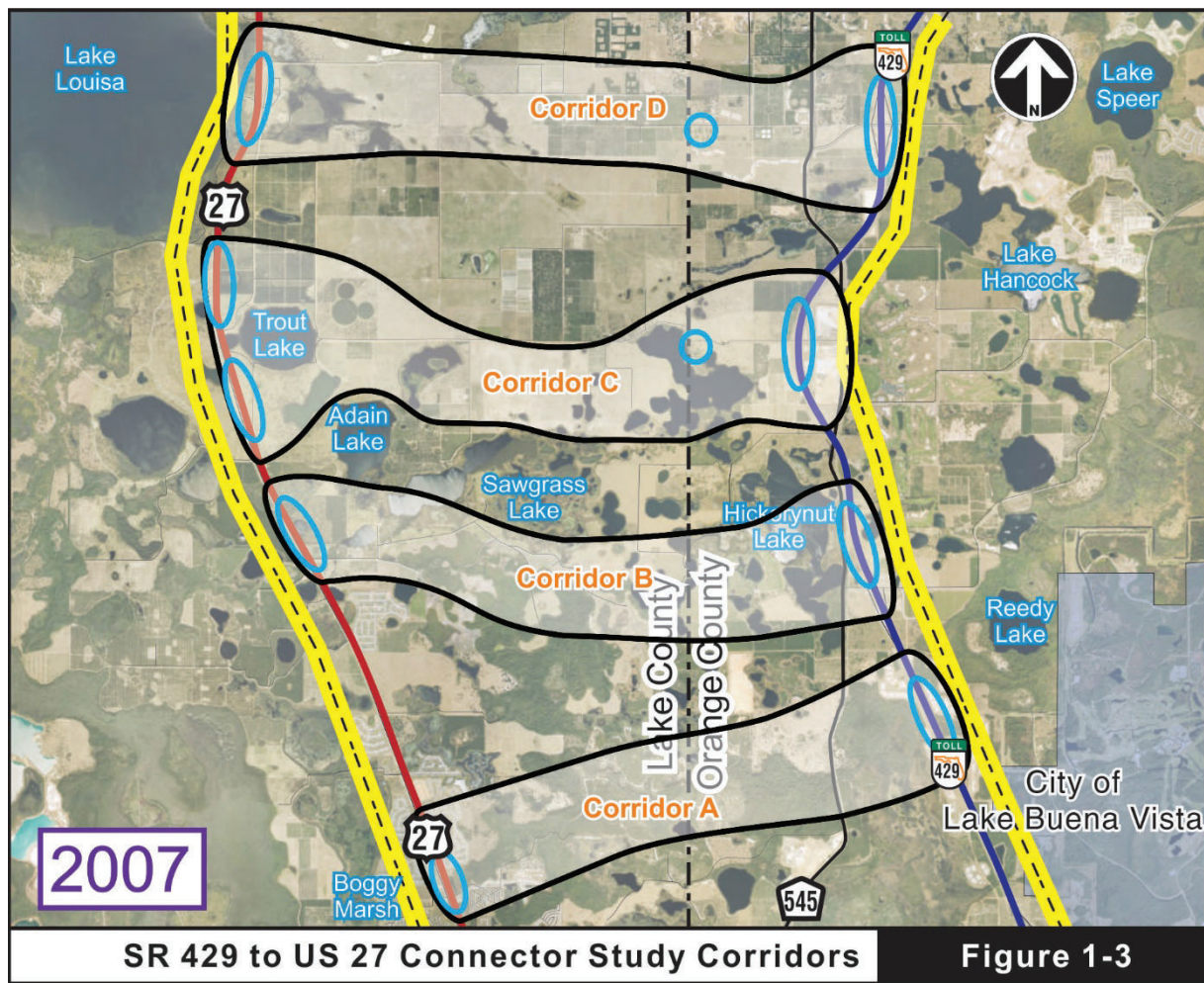
1.2.1.1 Project Background

The vision of this critical east-west corridor has been documented in prior concept studies. In 2002, the OOCEA first investigated the potential to extend SR 408 (East-West Expressway) to the west to address the transportation needs of west Orange and east Lake counties. A report titled “Western Extension Concept Development and Feasibility Study” was prepared which investigated the feasibility of a limited-access toll road. Four primary corridors were identified (see **Figure 1-2**): a “Northern Corridor”, a “SR 50 Corridor”, a “Hartwood-Marsh Corridor” and a “Southern Corridor”. The study concluded that only the “Southern Corridor” connecting SR 429 with US 27 in the general area of Schofield Road offered any long-term opportunity for Expressway Authority participation.



SECTION 1 – INTRODUCTION

In 2007, a Concept Development and Evaluation Study for a potential SR 429 to US 27 Connector was prepared by the OOCEA. The purpose of the study was to determine the feasibility and viability of a potential SR 429 to US 27 expressway connection within an area south of Hartwood Marsh Road and north of US 192. Four distinct corridors were investigated (see **Figure 1-3**). The study found that Corridor B was not viable due to significant wetland and surface water impacts and relatively low traffic attraction. Corridor A (the southernmost option) had the largest traffic attraction but extended through an environmentally sensitive area while Corridor D (the northernmost option) had the lowest traffic attraction. Corridor C, which generally traversed the area adjacent to Schofield Road within the central portion of the study area, offered a potential balance between traffic attraction and minimization of environmental impacts.



1.2.2 Need

There are six project needs that serve as justification for the proposed improvements. These needs are: 1) Provide improved system connectivity/linkage; 2) Accommodate anticipated transportation demand; 3) Provide consistency with local and regional plans; 4) Support economic viability and job creation; 5) Support intermodal opportunities; and 6) Enhance evacuation and emergency service. The following sections describe the needs in more detail.

1.2.2.1 System Connectivity/Linkage

System linkage is defined as linking two or more existing transportation facilities or types of modal facilities between geographic areas or regional traffic generators.

Figure 1-1 illustrates the existing roadway network within the vicinity of the proposed project. There are two major north-south facilities serving the project area, SR 429, a four-lane limited-access rural toll road at the eastern project terminus and US 27, a four-lane divided rural arterial at the western project terminus. In the east-west direction, SR 50, a six-lane urban arterial facility located approximately 7 miles to the north, and US 192, a six-lane urban divided arterial located approximately 7 miles south, connect Lake County to the Orlando urban core. These existing east-west facilities not only serve through traffic but also provide significant local access, thus limiting their ability to provide effective overall mobility.

At the present time, the east-west connectivity within the study area is deficient with Schofield Road, an unpaved 20-foot wide rural facility, providing the only connection between US 27 on the west and SR 429 on the east. A new limited-access, direct connection expressway facility would not only provide the much-needed connectivity in the area but would also significantly improve regional mobility and travel time.

A PER was completed in 2016 for Wellness Way, a new four-lane divided arterial extending from US 27 and connecting to New Independence Parkway in the vicinity of SR 429. It should be noted that the 2007 SR 429 to US 27 Connector Concept Development and Evaluation Study prepared by the OOCEA stated that a network of east-west six-lane roadway arterials could also meet the capacity need of the study area. The proposed Wellness Way facility alone will not be sufficient to provide the necessary

east-west linkage to meet the anticipated growth of the area when compared to a new limited-access, direct connection expressway facility.

Interchanges are proposed at US 27 in Lake County, SR 429 in Orange County, and the future extension of CR 455 in Lake County. Lake County's Visionary Map shows a southerly extension of CR 455 from its current terminus to the future extension of Sawgrass Bay Boulevard.

1.2.2.2 Anticipated Transportation Demand

According to the Central Florida Expressway Authority's 2040 Master Plan, Lake County's population is projected to increase by 56% (to 493,000 residents) and employment is projected to increase by 60% (to 212,700) by 2040. During the same time period, the population and employment growth within Orange County are expected to each increase by more than 50%. Two of the main areas of development generating additional population are the Wellness Way Area Plan (WWAP) in south Lake County and the Horizon West Special Planning Area (HWSPA) in southwestern Orange County. The WWAP includes more than 16,000 acres. Horizon West is a growing community of several villages occupying more than 20,000 acres and projected to house over 60,000 residents when completed. Horizon West also features the future site of a Valencia College satellite campus.

The January 2018 Bureau of Economic and Business Research (BEBR) population projections show from 2017 to 2045 a 54% growth in population is anticipated for both Lake and Orange counties.

The study area traverses all five of the WWAP Future Land Use Categories (FLUC); Town Center and Wellness Way 1, 2, 3 and 4. The planning horizon for the WWAP is projected to be 2040 with a build-out of 16,500 dwelling units and a projected employment of 36,000. CEMEX, a multinational building materials supply company, submitted an updated permit for the proposed Four Corners Sand Mine in August 2017. They propose to operate on 1,200 acres within the WWAP, on property divided by Schofield Road. The permit allows mining approximately 525 acres over a 22-year period.

The study area also falls within the Town Center and Village H (Hickory Nut) of Horizon West. The Town Center will be a regional employment center with a projected

employment force of over 27,000 and home to a host of new developments including a satellite campus of Valencia College and Orlando Health hospital. Overall, Horizon West has an anticipated build-out of 40,000 dwelling units and a projected commercial area of 9.5 million square feet.

An origin and destination (OD) study conducted by CDM Smith in 2017 for CFX revealed that much of the potential traffic for a new toll road would come from planned developments. In the year 2045, there is a potential for 34,000 daily trips traveling between US 27 and SR 429 in the vicinity of Schofield Road. With the proposed project as a tolled expressway, approximately 19,000 daily trips would be diverted from local roadways.

The proposed connector is anticipated to help accommodate the expected increase in traffic due to population and employment growth within the study area by expanding the limited-access expressway system.

1.2.2.3 Consistency with Local and Regional Plans

Planning consistency of the proposed project is documented in various local comprehensive plans (see **Table 1-1**). A brief explanation of each follows.

CFX 2040 Master Plan and Five-Year Work Plan: The subject project is a major component of the Authority’s plan to provide additional capacity to address the area’s increasing projected population and employment growth. The Lake/Orange County Connector would support the economic vitality of the WWAP and the HWSPA developments and is widely supported among local landowners and community leaders. The project is listed in the five-year work plan (2019-2023) and funded for PD&E in years 2018/2019 and for potential design in years 2021/2022 and 2022/2023.

Lake-Sumter Metropolitan Planning Organization (MPO) – 2040 Long Range Transportation Plan (LRTP): The Lake-Sumter MPO provides a forum for cooperative decision making concerning transportation issues throughout the urbanized area of Lake and Sumter counties. The latest draft list of priority projects (May 2018) shows that a “New Road Alternative Corridor Evaluation” between US 27 and SR 429 is listed as priority #20 under the Preliminary Engineering projects. In addition, the portion of the Lake/Orange Parkway project extending from US 27 to the Lake/Orange County line is included in the

SECTION 1 – INTRODUCTION

Lake-Sumter 2040 LRTP as a cost feasible element and as an Emerging Regional Significant Corridor.

West Orange South Lake Transportation and Economic Development Task Force (WOSLTED): This task force was initiated in 2000 with the goal of promoting transportation in the West Orange/South Lake (WOSL) region. In 2008, the task force started a planning process to ensure coordinated transportation and housing development which eventually resulted in a proposed system of new roadways and roadway improvements which included the provision of a proposed east-west connector from US 27 to SR 429. This connector has always been a main focus of this organization.

MetroPlan Orlando: MetroPlan Orlando is the metropolitan planning organization for the greater Orlando area. It coordinates and leads transportation planning efforts in Orange, Osceola and Seminole Counties. The subject project is listed on the 2040 LRTP Plan Development Cost Feasible projects (updated June 2017) as a funded project for both PD&E and design.

Table 1-1 – Local Planning Consistency

Agency	Remarks
Central Florida Expressway Authority (CFX)	Included in the 2040 Master Plan and the Five-Year Work Plan (2019-2023)
Lake-Sumter MPO	Identified the proposed project in the 2040 LRTP Needs Plan
West Orange/South Lake Transportation and Economic Development Task Force	Identified a connection between US 27 to Orange County in its Transportation Plan
MetroPlan Orlando	Identified in its Technical Report 3: “Plan Development and Cost Feasible Projects”

1.2.2.4 Economic Viability and Job Creation

The proposed facility is needed to further support the economic viability of the WWAP. This 16,000-acre service area has been recognized for many years as having significant potential for economic development in southeast Lake County. It is projected to be an economic engine for job creation in the region and is envisioned to strengthen its connectivity with other regional economic hubs. With an anticipated buildout of over 16,000 residential units, this important planned development is expected to generate over 26,800 jobs in the future.

The proposed connector will also directly benefit the economic and job creation potential of the Horizon West development by expediting the efficient delivery of goods and services in this developing area of west Orange County.

1.2.2.5 Support Intermodal Opportunities

The Horizon West Town Center is proposed as an intermodal and freight staging facility potentially providing access to trucks, rails, airports and/or ports. Its presence enhances the integration and connectivity of the multimodal transportation system. The proposed connector would link this freight staging facility with two major Strategic Intermodal System (SIS) highways (US 27 and SR 429) and thus connect Lake County to a network of limited-access facilities that provide access to the Orlando International Airport and Port Canaveral. In addition, the MetroPlan Orlando’s “Regional Freight and Goods Movement Facilities Profile” noted that there is “limited existing east-west highway and rail connectivity within the region – which provides logistical challenges for some shippers”. The proposed project will add a valuable east-west mobility link to the area’s transportation network.

1.2.2.6 Evacuation and Emergency Services

The East Central Florida Region has been identified by the National Oceanic and Atmospheric Administration (NOAA) as a high hurricane-vulnerable area within the United States and thus requires sufficient and efficient evacuation routes. There are no existing designated east-west evacuation routes within the immediate project area. Only SR 50, approximately 7 miles to the north, and US 192 (SR 530), approximately 7 miles to the south, provide effective east-west evacuation connection to important north-south SIS

SECTION 1 – INTRODUCTION

routes in the area (US 27 and SR 429). The provision of an additional high-speed, limited-access east-west facility will afford desirable redundancy of the highway network to accommodate diverted local and regional traffic during times of natural or man-made emergencies.

Another critical issue deals with potential delays of fire and emergency services. There are two fire stations just north and south of the study area along US 27 but their linkage to the east is ineffective due to the lack of a paved or limited-access facility connecting to SR 429, potentially resulting in additional delays. The proposed connector would facilitate prompt fire and emergency response.

2.0 PREFERRED ALTERNATIVE

A multiphase alternative development evaluation and selection process was employed to properly assess all alternatives considered for the proposed Lake / Orange County Connector.

2.1 Project Segmentation

Initially, the study area was divided into three segments that reflect predominant land uses, natural resources, etc. to facilitate the analysis. The segmental breakdown approach ensures that the generated corridor alternatives are more responsive to the needs of each segment rather than only to the generalized project needs.

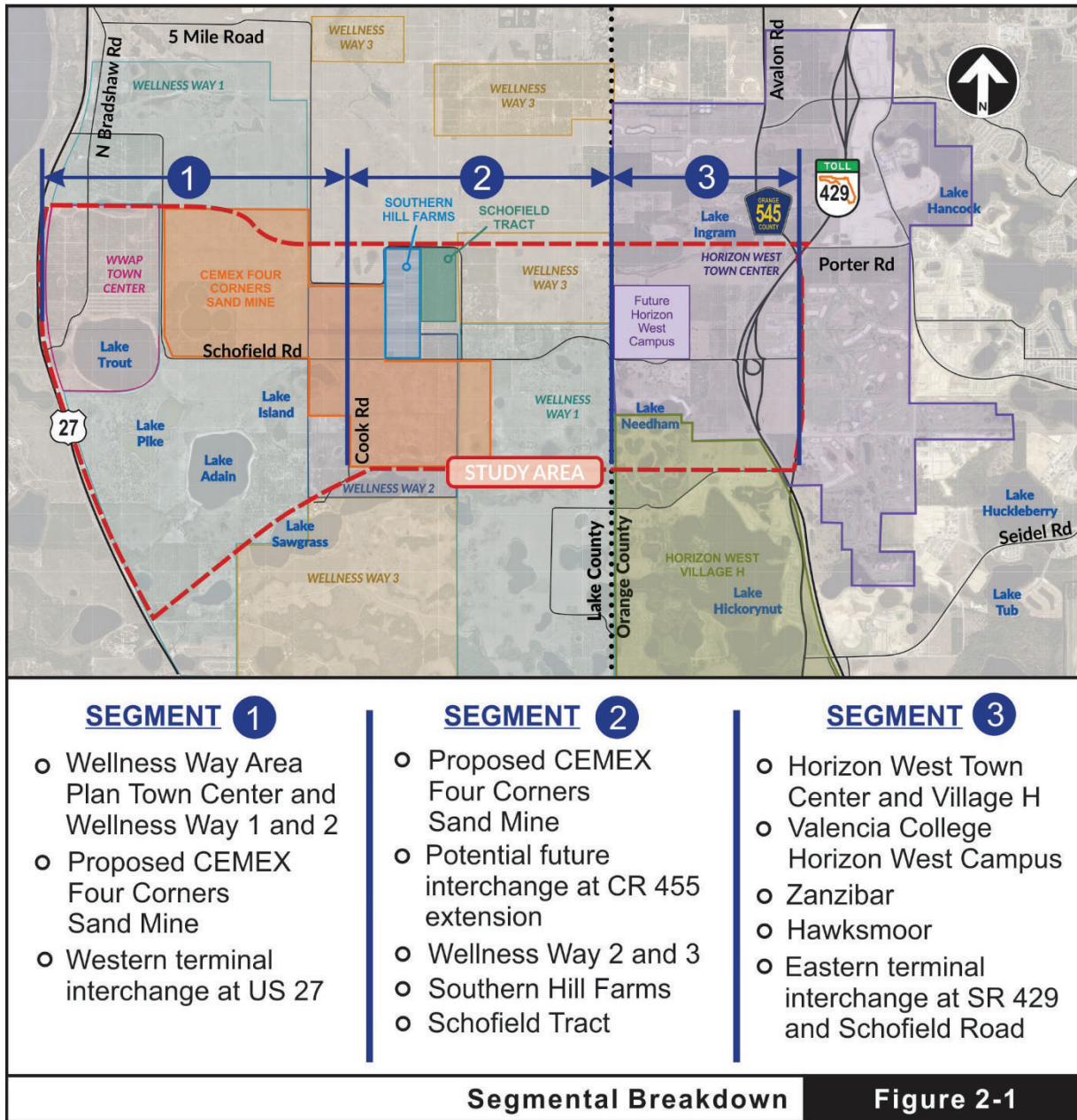
Figure 2-1 illustrates the study segments and provides a description of each. Each segment has unique characteristics as well as differences in environmental, engineering and socio-economic features.

Segment 1 comprises the project's western two miles and generally extends from US-27, a rural six-lane north-south facility, to Cook Road, a minor unpaved north-south rural road just east of Lake Island. Some of the main features within this first segment include various lakes (e.g., Trout, Pike, Adain, Island), the Wellness Way Area Plan (WWAP) Town Center, Wellness Way 1, the proposed CEMEX Four Corners Sand Mine and portions of Wellness Way 2.

Segment 2 comprises the central portion of the study area and extends from Cook Road to the Lake/Orange county line for a total length of approximately 1.8 miles. Some of the main features within this segment include portions of Wellness Way 2 and 3, the Schofield Tract, CEMEX Four Corners Sand Mine, and the Southern Hill Farms north of Schofield Road, a rural two-lane east-west facility projected to be widened to 4 lanes in the future.

Segment 3 extends for approximately one mile from the Lake/Orange county line to the study's eastern terminus at the SR 429 and Schofield Road interchange, where Schofield Road heads west and connects to US 27. Some of the principal features within Segment 3 include the Horizon West Town Center, the proposed Valencia College Horizon West Campus, Zanzibar, Hawksmoor, Horizon West Village H and Lake Needham.

SECTION 2 – PREFERRED ALTERNATIVE



2.2 Description of the Preferred Alternative

In general, all alternatives were the result of combinations of the three project segments as well as various interchange configurations at each access point. After a comprehensive evaluation process, one alternative was selected as being the most effective option. This alternative is illustrated on **Figure 2-2**.

The typical section for the preferred alternative is depicted on **Figure 2-3**.

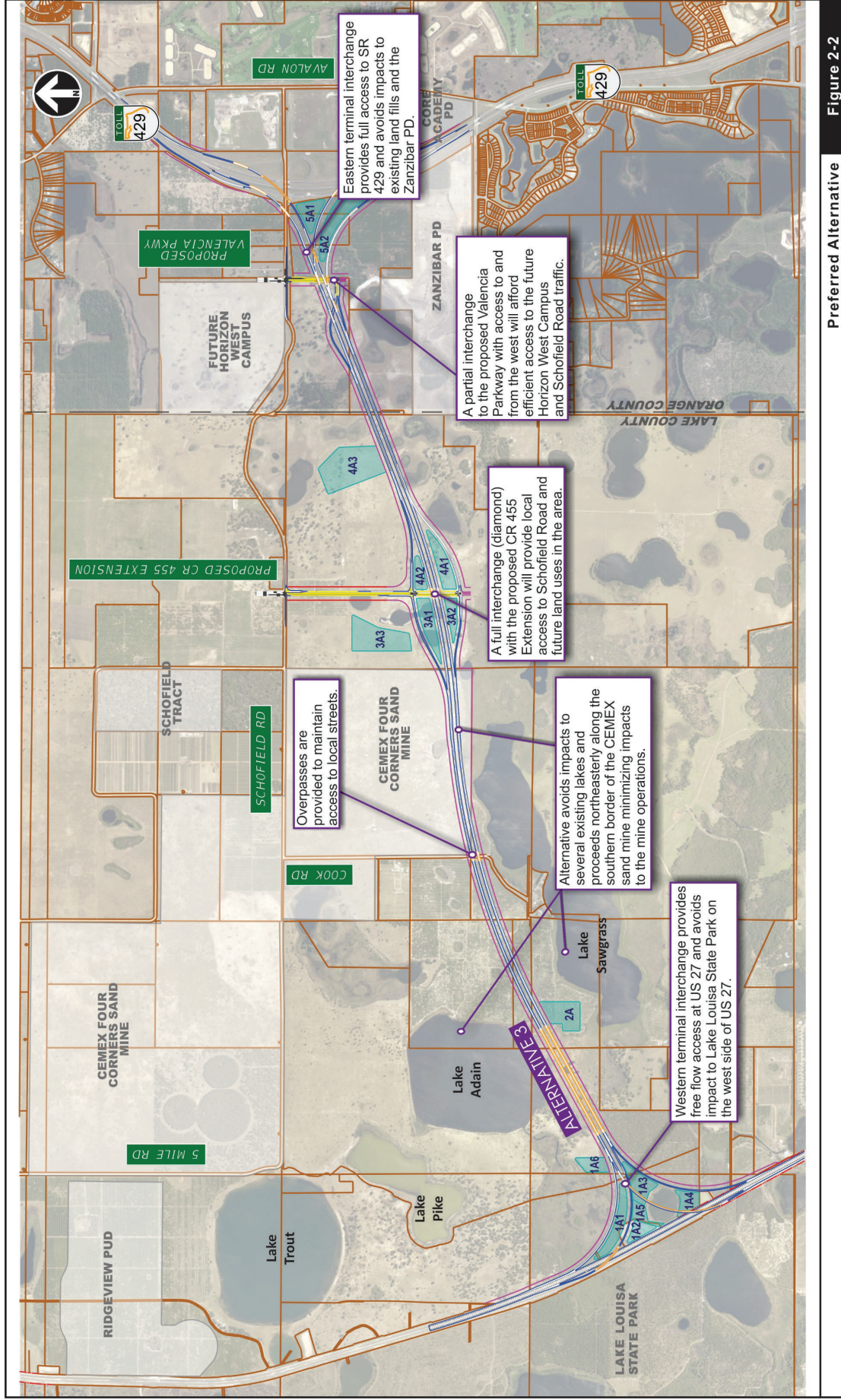
A brief description of the preferred alternative follows:

Segment 1 (from US 27 (Begin Project) to Cook Road): Within Segment 1, the preferred alternative features a four-lane rural expressway typical section, with 330 feet of right-of-way, 12-foot travel lanes, 12-foot outside shoulders, an 88-foot divided median and a 94-foot border width. The section will feature grade separations in order to provide access to local facilities. The western interchange at US 27 provides direct connect ramps with free flow access to/from US 27. In order to avoid impacts to the abutting Lake Louisa State Park, a portion of US 27 will be slightly shifted to the east. Within this segment, the preferred alternative generally follows a northeast direction, thus avoiding impacts to Lakes Adain and Sawgrass.

Segment 2 (from Cook Road to the Lake/Orange County Line): Within this segment, the preferred alternative continues with the same typical section previously described under Segment 1. The alignment generally shifts slightly southward just east of Cook Road in order to minimize impacts to the CEMEX Four Corners Sand Mine property. A full diamond interchange will be provided at the proposed CR 455 Extension facility to provide local access.

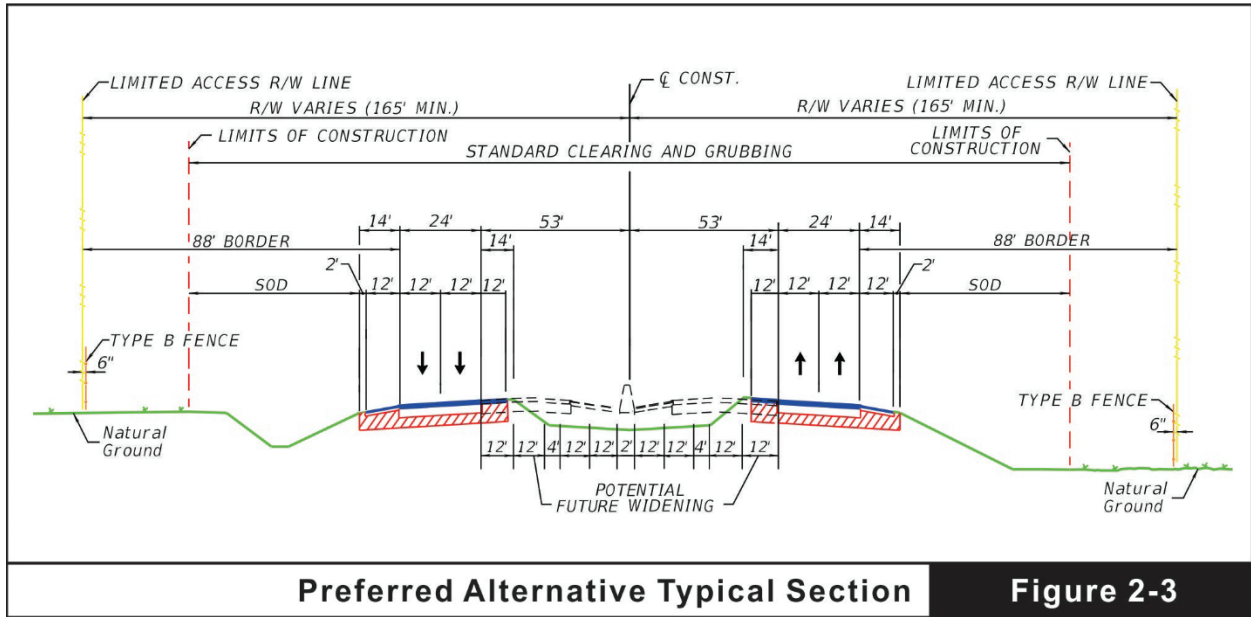
Segment 3 (from the Lake/Orange County Line to the SR 429 and Schofield Road interchange [End Project]): Within Segment 3, the preferred alternative continues the same typical section described under Segment 1. A partial interchange at the proposed Valencia Parkway will provide access to and from the west. At the SR 429 with Schofield Road interchange, direct connect ramps will provide access to/from both Northbound and Southbound SR 429.

SECTION 2 – PREFERRED ALTERNATIVE



Preferred Alternative Figure 2-2

SECTION 2 – PREFERRED ALTERNATIVE



3.0 EXISTING UTILITIES

Utility companies with known facilities within the proposed project limits were contacted via email informing them of the PD&E Study and requested that they mark one set of the base plans enclosed with their principal existing and proposed facilities. They were also requested to submit any general concerns and/or comments that would be useful in the evaluation process. The utility companies and their contact information, along with the utility type are listed in **Table 3-1**.

SECTION 3 – EXISTING UTILITIES

Table 3-1 - Existing Utilities

Utility	Contact Information	Utility Type	Responded
AT&T Local Transmission	Steve Eriksson seriksson@pea-inc.net Greg Jacobson gtjacobson@att.com	Fiber, Communication Lines	Yes
AT&T Florida	Alan Reynolds ar2916@att.com	Fiber, Communication Lines	Yes
Century Link	Marlon Brown Marlon.n.brown@centurylink.com Roy Dowless roy.dowless@centurylink.com	Fiber, Telephone	Yes
Duke Energy Florida	George Baxter (727) 483-3242	Electric	Yes
Lake Utilities Services Inc.	Bryan Gongre bkgongre@uiwater.com	Water	Yes
Level 3 Communications, LLC (fka TW Telecom)	Xan Rypkema xan.ryphema@centurylink.com	Fiber, Communication lines	Yes
Orange County Utilities	Jose Hernandez jose.hernandez2@ocfl.net	Wastewater	Yes
Orlando Telephone Company dba Summit Broadband	Aaron Pickle aaron.pickle@summit-broadband.com	Fiber, Communication lines	Yes
Smart City Solutions	David Cawley dcawley@smartcity.com	Fiber, Telephone	Yes
Spectrum aka Bright House Networks	Paul Rymer paul.rymer@charter.com	Fiber, Communication Lines	No
Sumter Electric Cooperative (SECO)	David Nelson david.nelson@secoenergy.com	Energy	Yes
Verizon Business f/k/a MCI	Thomas Clark thomas.clark@verizon.com	Fiber	Yes
Water Conserv II	Phil Cross Phil.cross@waterconservii.com	Wastewater	Yes

4.0 MITIGATION RECOMMENDATIONS

The majority of the existing/proposed overhead and buried utilities run along US 27 and Schofield Road. As a result of the construction of the preferred alternative, most utilities located within the major interchanges where reconstruction may occur (such as US 27 and SR 429/Schofield Road) will be impacted and will need to be relocated. The preferred alternative also encroaches onto the Duke Energy Transmission Lines/Poles that are located on the east of US 27. Due to this encroachment, there are approximately 36 transmission poles that are being impacted and may require relocation. There are also impacts to the AT&T Transmission buried cable conduit which runs along US 27 from South Bradshaw Road to approximately 0.5 mile south of Frank Jarrell Road. CFX will continue to coordinate the utility owners during Final Design and Construction.

APPENDIX A

Potential Utility Conflicts

Table A-1 - Existing Utilities

Utility & Contact Information	Utility Type	Description	Remarks
AT&T Local Transmission	Fiber, Communication Lines	Buried Cable 2'-2" Conduit	<ul style="list-style-type: none"> Runs parallel along Schofield Road on the south side in the 16'-6" Easement from approximately one mile west of Cook Road to east of SR 429 Interchange (End Project) Runs parallel along South Bradshaw Road on the east side in the 16'-6" Easement from south of Trout Lake to US 27 intersection. Run parallel along US 27 in the existing US 27 right-of-way on the east side from South Bradshaw Road to approximately 0.5 miles south of Frank Jarrell Road (Begin Project)
AT&T Florida	Fiber, Communications Lines		<ul style="list-style-type: none"> No existing utilities located within the project limits Runs parallel along Cook Road on the east side at approximately STA 194+ (25 BT) Runs parallel along US 27 within the entire project limits on the west side (200 BT - pending removal) Runs perpendicular to US 27 approximately .25 ± miles south of Frank Jarrell Road
Century Link	Fiber, Telephone	Buried Telephone	<ul style="list-style-type: none"> Runs parallel along Schofield Road on the north side approximately .15 ± miles east of the proposed Valencia Pkwy up to the proposed Valencia Pkwy (50 BT) Runs parallel along Schofield Road on the south side from the proposed Valencia Pkwy to SR 429/end of project limits (50 BT) Runs perpendicular to Schofield Road at the proposed Valencia Pkwy (50 BT) Runs parallel along Schofield road on the north side from the proposed Valencia Pkwy to SR 429/end of project limits (50 BT – not in service) Runs parallel along US 27 within the entire project limits on the west side (BFO 24 – pending removal) Runs parallel along US 27 within the entire project limits on the west side (BFO 288) Runs parallel along US 27 on the west side from Frank Jarrell Road down south to end of project limits (BFO 144 – pending removal) Runs perpendicular to US 27 at Frank Jarrell Road (BFO 24 – pending removal)
Duke Energy Florida	Electric/ Transmission	Conduit System 25 BT and 24 FOC OE 69kV Overhead Transmission	<ul style="list-style-type: none"> Runs parallel along US 27 on the west side from Frank Jarrell Road down south to end of project limits Runs parallel along US 27 within the entire project limits on the east side
Lake Utilities Inc	Water	Existing 16" PVC Water Main (buried) Existing 8" PVC Force Main (buried) Proposed 12" Force Main (buried)	<ul style="list-style-type: none"> Runs parallel along US 27 within the entire project limits on the west side Runs parallel along US 27 within the entire project limits on the east side from .15 miles ± south of Frank Jarrell Road to the southern end of project limits Runs perpendicular to US 27 Runs parallel along US 27 on the east side from the begin project northern limits to approximately .15 miles ± south of Frank Jarrell Road
Level 3 Communications, LLC (fka TW Telecom)	Fiber, Communication Lines		<ul style="list-style-type: none"> No existing utilities located within the project limits.
Orange County Utilities	Wastewater		<ul style="list-style-type: none"> Conserve II pipeline - see Water Conserv II for location
Orlando Telephone Company dba Summit Broadband	Fiber, Communication Lines	Overhead Fiber Optic Cable	<ul style="list-style-type: none"> Runs parallel along US 27 within the entire project limits on the west side
Bright House Networks Charter	Fiber, Telephone	No Response	<ul style="list-style-type: none"> No existing utilities located within the project limits No Response
Sumter Electric Cooperative (SECO)	Energy	Single Phase Line Two Phase Line Three Phase Line	<ul style="list-style-type: none"> Runs parallel along Cook Road on the East side Runs parallel along Frank Jarrell Road on the south side starting from the intersection of US 27 continuing to the east outside of the proposed right of way Runs parallel along US 27 within the entire project limits on the west side
Verizon Business f/k/a MCI	Fiber		<ul style="list-style-type: none"> No existing utilities located within the project limits
Water Conserv II	Wastewater	Buried	<ul style="list-style-type: none"> Runs parallel along Cook Road on the west side Runs parallel with the preferred alternative at approximately STA 192± where the wastewater line goes into a property parcel. Runs parallel with Schofield Road on the south side throughout the entire project study limits Runs perpendicular to Schofield Road at approximately STA 342+ where it crosses Schofield Road

APPENDIX B

Utility Responses

AT&T Local Transmission

From: [Christina Meyer](#)
To: [Paul Carballo](#)
Cc: [Stefan Eriksson](#)
Subject: 3-7-19 PD&E Study for US 27 to SR 429 Connector
Date: Thursday, March 7, 2019 2:07:06 PM
Attachments: [3-7-19 PD&E Study for US 27 to SR 429 Connector.PDF](#)

Good Afternoon Paul,

In response to your request, attached is a letter from Mr. Eriksson.

Thank you,

Sarah Nostro

PEA, Inc.
(407) 578-8000 ph
(407) 578-7300 fax

Attention: The information contained in this E-mail message is privileged and confidential information intended only for the use of the individual(s) named above. If the reader of this message is not the intended recipient, you are hereby notified that any dissemination, distribution or copy of this communication is strictly prohibited. If you have received this communication in error, please contact the sender by reply E-mail and destroy all copies of the original message. Thank you.



Engineering Office – Orlando

6000 Metro West Blvd.
Suite 201
Orlando, FL 32835-7631
Phone: (407) 578-8000
Fax: (407) 578-7300
Email: seriksson@pea-inc.net

March 7, 2019

Metric Engineering, Inc.
Attn: Mr. Paul Carbello
525 Technology Parkway, Suite 153
Lake Mary, Fl. 32746
(407) 644-1898

**RE: PD&E Study for US 27 to SR 429 Connector
Lake and Orange County**

AT&T Corp Long Lines (Transmission) has a Direct Buried and a conduit system with high a capacity fiber optic cable located in an AT&T Corp Easement and within the above project limits. AT&T records have been reviewed and based on Preliminary plans received on 02/28/19 Involvement is anticipated with proposed construction at this time. Please send updated plans to this office as they become available. If you need more information, please call this office at (407) 578-8000.

Sincerely,

A handwritten signature in black ink, appearing to read "Stefan Eriksson".

Stefan Eriksson
Assistant Project Engineer

SGE/CM 19-01-001
Cc: G. Jacobson (AT&T Corp)
File

Orlando, FL

From: Paul Carballo <Paul.Carballo@metriceng.com>
Sent: Thursday, February 28, 2019 3:45 PM
To: seriksson@pea-inc.net; gtjacobson@att.com
Cc: William Sloup; Jazlyn Heywood; Gabriela Garcia
Subject: Lake/Orange County Connector PD&E Study - Adjustment of Utilities Letter
Attachments: Basemap - Lake Orange County Connector PD&E Study.kmz; Basemap - Lake Orange County Connector PD&E Study.pdf

February 28, 2019

Mr. Greg Jacobson & Mr. Steve Eriksson,
AT&T Corp/PEA (Transmission – Long Distance)
6000 Metro West Blvd, Suite 201
Orlando, Florida 32835

ADJUSTMENT OF UTILITIES – FLORIDA STATUTES CHAPTER 337.403

RE: Project Description: PD&E Study for the Proposed Lake/Orange County Connector
(US 27 to SR 429)
CFX Project Number: 599-225
County: Lake/Orange

The Central Florida Expressway Authority (CFX) is in the development phase for evaluation of several design alternatives and final location design approval relating to the above project. Facilities owned or maintained by your utility agency/owner (UAO) within the project vicinity may require relocation or adjustment as necessitated by final design selection.

To assist us in selection of the most feasible design alternative while minimizing conflicts with your facilities, a PDF and a KMZ file of the base map are attached. A PDF or KMZ file should be marked with your principal existing and proposed facilities and returned to this office. Along with the PDF or KMZ file, your UAO should also present any general concerns and/or comments that would be useful in the CFX's evaluation process.

If your facilities are located on right of way owned by you, in an easement acquired for your use or if you have other interests within the limits of this project, please inform of us the details so we may take that into consideration on the development of the alternatives. If you have any of the above interests, please mark the approximate boundaries of them on the enclosed PDF and return the same, together with documentation of your interests and a preliminary cost estimate to this office.

Please note that failure to respond to this request will result in plans development without identification of your facilities. In order to maintain project schedules, please return the marked up PDF with your transmittal to this office by **March 20, 2019**.

If you do not have any existing or proposed facilities within the limits of this project, please advise us of that fact in writing. Should additional information be required, please contact me at (407)-644-1898 or via email at william.sloup@metriceng.com. Your cooperation in these matters is appreciated.


Sincerely,

WILLIAM F SLOUP, PE
Vice President of Roadway Design
North/Central FL PD&E MGR



WE'VE MOVED:

525 Technology Park, Suite 153
Lake Mary, FL 32746
Office: (407) 644-1898 ext. 2300
Mobile: (386) 848-5185
Fax: (407) 644-2376
william.sloup@metriceng.com
www.metriceng.com

 **Follow Us**

On behalf of William Sloup, PE,

Paul Carballo, EI
Metric Engineering

Attention: The information contained in this E-mail message is privileged and confidential information intended only for the use of the individual(s) named above. If the reader of this message is not the intended recipient, you are hereby notified that any dissemination, distribution or copy of this communication is strictly prohibited. If you have received this communication in error, please contact the sender by reply E-mail and destroy all copies of the original message. Thank you.

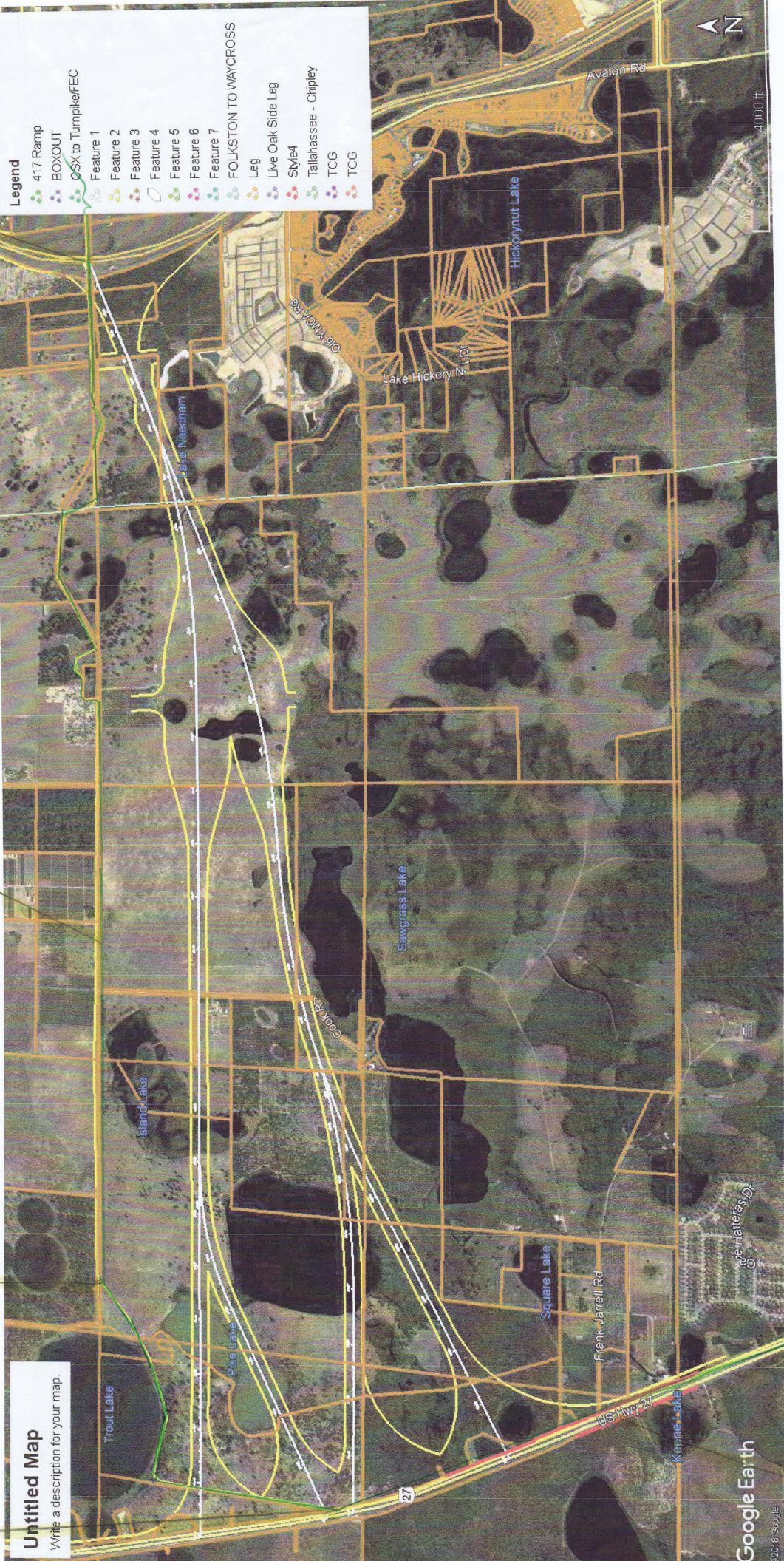
ATT CORP TRANSMISSION
 END OF 10.6
 FOLKSTONE HWY 27 ROW
 START

ATT CORP TRANSMISSION
 START 2-2" CONDUIT
 FOC

EXISTING TRANSMISSION FOC
 TRAILER STAGE FOLKSTONE
 ATT CORP BURIED 10.6
 PIPECT

EXISTING TRANSMISSION
 ATT CORP BURIED 10.6
 PIPECT

Untitled Map
 Write a description for your map.



EXISTING TRANSMISSION
 ATT CORP CONDUIT
 FOC IN 2-2" ROW
 US 27

AT&T Florida

Paul Carballo

From: REYNOLDS, ALAN <ar2916@att.com>
Sent: Friday, March 8, 2019 11:58 AM
To: Paul Carballo
Cc: William Sloup; Jazlyn Heywood; Gabriela Garcia
Subject: RE: Lake/Orange County Connector PD&E Study - Adjustment of Utilities Letter

Paul,
Currently AT&T Florida has no facilities within the scope of this project and no current plans to expand in this area yet. Please keep us involved the coordination of this project in case this changes.
Let me know if you have any questions.
Thanks,

Alan Reynolds

Manager OSP Plng & Eng Design
Southeast Construction & Engineering, Florida Engineering

AT&T

5100 Steyr St Orlando, Fl. 32819
407-351-8180 / ar2916@att.com

From: Paul Carballo <Paul.Carballo@metriceng.com>
Sent: Thursday, February 28, 2019 3:45 PM
To: REYNOLDS, ALAN <ar2916@att.com>
Cc: William Sloup <william.sloup@metriceng.com>; Jazlyn Heywood <jazlyn.heywood@metriceng.com>; Gabriela Garcia <Gabriela.Garcia@metriceng.com>
Subject: Lake/Orange County Connector PD&E Study - Adjustment of Utilities Letter

February 28, 2019

Mr. Alan Reynolds,
AT&T Florida (f/k/a Bellsouth a/k/a Distribution)
5100 Steyr Street
Orlando, Florida 32819

ADJUSTMENT OF UTILITIES – FLORIDA STATUTES CHAPTER 337.403

RE:	Project Description:	PD&E Study for the Proposed Lake/Orange County Connector (US 27 to SR 429)
	CFX Project Number:	599-225
	County:	Lake/Orange

The Central Florida Expressway Authority (CFX) is in the development phase for evaluation of several design alternatives and final location design approval relating to the above project. Facilities owned or maintained by your utility

agency/owner (UAO) within the project vicinity may require relocation or adjustment as necessitated by final design selection.

To assist us in selection of the most feasible design alternative while minimizing conflicts with your facilities, a PDF and a KMZ file of the base map are attached. A PDF or KMZ file should be marked with your principal existing and proposed facilities and returned to this office. Along with the PDF or KMZ file, your UAO should also present any general concerns and/or comments that would be useful in the CFX's evaluation process.

If your facilities are located on right of way owned by you, in an easement acquired for your use or if you have other interests within the limits of this project, please inform of us the details so we may take that into consideration on the development of the alternatives. If you have any of the above interests, please mark the approximate boundaries of them on the enclosed PDF and return the same, together with documentation of your interests and a preliminary cost estimate to this office.

Please note that failure to respond to this request will result in plans development without identification of your facilities. In order to maintain project schedules, please return the marked up PDF with your transmittal to this office by **March 20, 2019**.

If you do not have any existing or proposed facilities within the limits of this project, please advise us of that fact in writing. Should additional information be required, please contact me at (407)-644-1898 or via email at william.sloup@metriceng.com. Your cooperation in these matters is appreciated.

Sincerely,

WILLIAM F SLOUP, PE
Vice President of Roadway Design
North/Central FL PD&E MGR



WE'VE MOVED:

525 Technology Park, Suite 153
Lake Mary, FL 32746
Office: (407) 644-1898 ext. 2300
Mobile: (386) 848-5185
Fax: (407) 644-2376
william.sloup@metriceng.com
www.metriceng.com



On behalf of William Sloup, PE,

Paul Carballo, EI
Metric Engineering

Attention: The information contained in this E-mail message is privileged and confidential information intended only for the use of the individual(s) named above. If the reader of this message is not the intended recipient, you are hereby notified that any dissemination, distribution or copy of this communication is strictly prohibited. If you have received

this communication in error, please contact the sender by reply E-mail and destroy all copies of the original message.
Thank you.

Attention: The information contained in this E-mail message is privileged and confidential information intended only for the use of the individual(s) named above. If the reader of this message is not the intended recipient, you are hereby notified that any dissemination, distribution or copy of this communication is strictly prohibited. If you have received this communication in error, please contact the sender by reply E-mail and destroy all copies of the original message.
Thank you.

Century Link

Paul Carballo

From: Kevin Harder <kharder@terratechllc.net>
Sent: Tuesday, March 5, 2019 8:20 AM
To: Paul Carballo
Cc: Leslie, Ty T; Marlon Brown; Byrnes, David R; Riley Olsen; Vivian McKeon
Subject: CenturyLink GreenLine Plans for Lake/Orange County Connector PD&E Study
Attachments: Basemap - Lake Orange County Connector PD&E Study GreenLine Plans 3-4-19.pdf

Paul,

Attached are CenturyLink's GreenLine plans for the above referenced project. Please note that these apply to "legacy Century" facilities only and do NOT apply to "legacy Level 3" facilities.

Please call with any questions or concerns. Thank you.



Kevin Harder, P.E.

TERRA TECHNOLOGIES LLC



815-451-1668



kharder@terratechllc.net

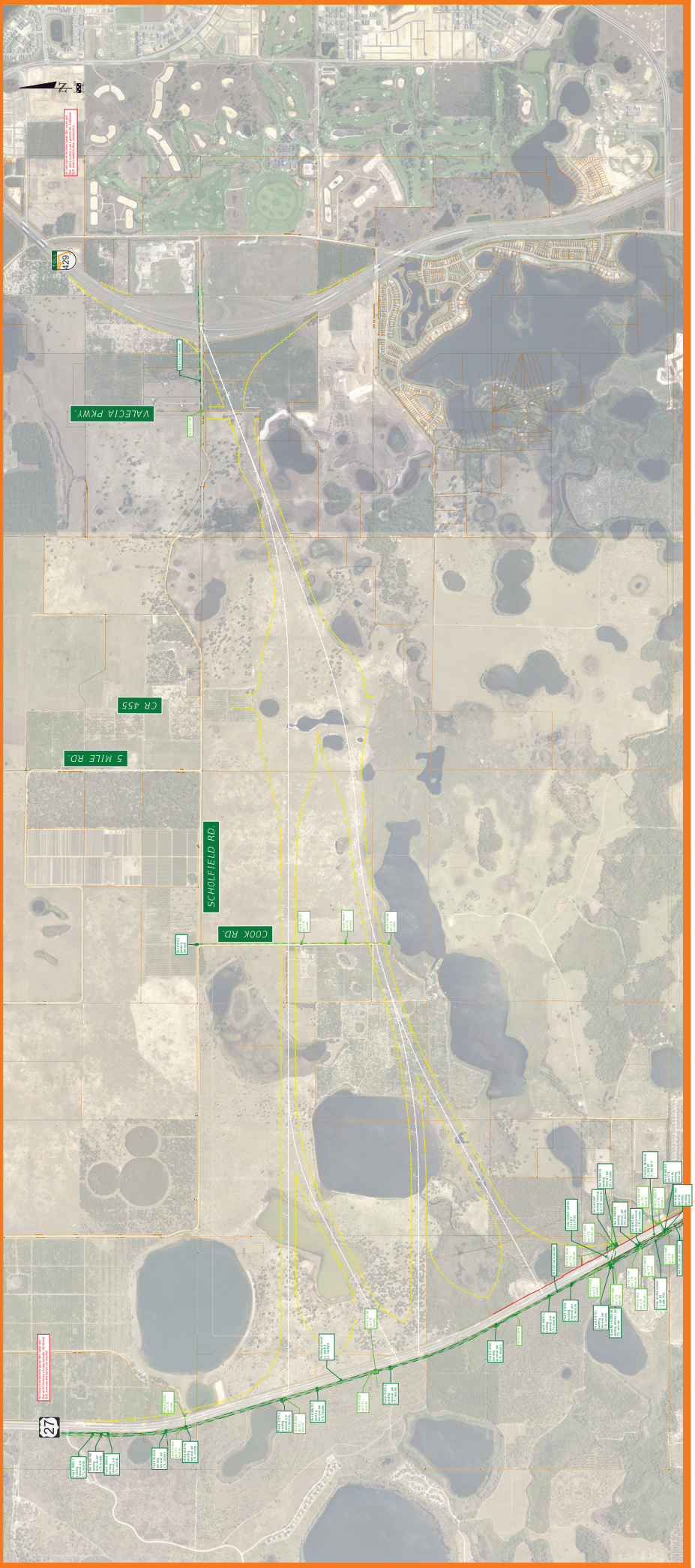


TERRATECHLLC.NET

This email and any files transmitted with it are confidential and intended solely for the use of the individual or entity to which they are addressed. This message contains confidential information and is intended only for the individual named. If you are not the named addressee you should not disseminate, distribute or copy this e-mail. Please notify the sender immediately by e-mail if you have received this e-mail by mistake and delete this e-mail from your system. If you are not the intended recipient you are notified that disclosing, copying, distributing or taking any action in reliance on the contents of this information is strictly prohibited.

Attention: The information contained in this E-mail message is privileged and confidential information intended only for the use of the individual(s) named above. If the reader of this message is not the intended recipient, you are hereby notified that any dissemination, distribution or copy of this communication is strictly prohibited. If you have received this communication in error, please contact the sender by reply E-mail and destroy all copies of the original message. Thank you.

CFX LAKE/ORANGE COUNTY CONNECTOR FEASIBILITY/PD&E STUDY



Duke Energy Florida

Paul Carballo

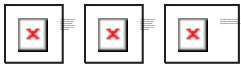
From: Scott Vanvelzor <SVanvelzor@pike.com>
Sent: Friday, March 15, 2019 9:07 AM
To: William Sloup
Cc: Paul Carballo; 'DEFTransmissionGov@duke-energy.com'; Aric Rogers
Subject: RE: Lake/Orange County Connector PD & E study--Duke Energy Transmission (email 1 of 2)
Attachments: #599-225; CFX Lake-Orange County Connector _Duke Transm(part 1 of 2).pdf

Good morning Mr. Sloup,

Please see attached for green line mark ups depicting existing Duke Transmission facilities. I am sending two emails due to file size. Thank you

Scott Vanvelzor
Senior Project Manager

Pike Engineering, LLC
2189 Cleveland St, Suite 202
Clearwater, FL 33765
T: 813-909-1241
SVanvelzor@pike.com
www.pike.com



The information contained in this electronic message is information intended for the use of only the individual or entity named above and may be PRIVILEGED and CONFIDENTIAL. If the reader of this message is not the intended recipient or the employee or agent responsible for delivering it to the recipient, you are hereby notified that any review, disclosure, dissemination, distribution, or copying of this communication is strictly prohibited. If you received this electronic message in error, please notify the sender immediately by replying to this e-mail and permanently delete the original message. Thank you

Attention: The information contained in this E-mail message is privileged and confidential information intended only for the use of the individual(s) named above. If the reader of this message is not the intended recipient, you are hereby notified that any dissemination, distribution or copy of this communication is strictly prohibited. If you have received this communication in error, please contact the sender by reply E-mail and destroy all copies of the original message. Thank you.

DUKE ENERGY TRANSMISSION RGB NOTES

DUKE ENERGY TRANSMISSION RGB NOTES:

- 1) Contact: George Baxter @ (727) 483-3242
- 2) Notifications to DET:
 - a. When requesting outages, the contractor must follow the following guidelines:
 - i. The roadway contractor must provide an outage package indicating: the scope of work, start to finish schedule, type of equipment utilized, contractor team contact information, design drawings and other information as identified by DET as necessary. Outage initiation requires a minimum of 28-days from the approval of the outage package. In cases where multiple transmission lines are impacted by the project, DET will only allow one circuit out of service at any given time.
 - ii. If at any time a de-energized line will need to be placed back into service, such as a system emergency (e.g. hurricane, loss of another transmission line, and/or extreme load, etc.) DET will ask the roadway contractor, within a two-hour period, to shut down any construction that would restrict DET construction crews from placing the de-energized line back into service.
 - iii. Typically, any de-energizing of any DET lines can occur during the following time periods: October 1st to November 15th, and March 1st to April 15th. Any additional required de-energized time periods needed throughout the project will need to be coordinated with the UAO representative previously listed.
 - iv. Typically an outage cannot exceed a two-week duration; a new request may be required if additional outage time is needed.
 - v. DET can NOT guarantee that the roadway contractor will get the approval for the outage; it is the contractor's responsibility to follow up with the above-listed contact.
 - vi. If for any reason the outage was approved but can't be accomplished, the DET will reserve the right to cancel the outage with 2-hours advance notification.
 - vii. In cases where multiple transmission lines are impacted by the project, DET will only allow one circuit out of service at any given time.
 - viii. A responsible representative from the roadway contractor's staff will attend all daily and necessary pre-job briefing meetings conducted by DET.
 - ix. An outage that is reimbursable to DET may require payment prior to the initiation of the outage.
- 3) This project is to be constructed in the vicinity of energized 69kV OH transmission.
- 4) When doing any work or task under or near any DET facilities, all NESCA & OSHA guidelines must be adhered to.
- 5) Any relocation of existing or proposed DET facilities beyond what is described in this document that is required to accommodate construction will require notice sufficient to cover analysis, design, material logistics & mobilization/demobilization.
- 6) When the roadway contractor is excavating around DET facilities, they shall provide at least a 15-foot horizontal clearance to the facility; if this cannot be met, a notification must be sent to the UAO Field representative previously listed to arrange for a field meeting.
- 7) The roadway contractor is prohibited from stacking material (soils, fill dirt, gravel, etc.) under or near energized overhead power lines.
- 8) No grading is allowed within any DET easement without prior approval from Duke Energy Asset Protection.
- 9) The road plans and/or survey provided did not reflect existing DET facility locations. Transmission facilities as shown on marked RGB plans are approximate and require additional field surveying for accuracy.


THESE NOTES SHALL APPLY TO ALL RGB SHEETS CONTAINED WITHIN THIS DUKE ENERGY TRANSMISSION RGB SUBMITTAL

ROAD NO.	COUNTY	FPD	PLAN STAGE	PLAN STAGE DATE	UGS: 22-017
US Hwy 27	Orange/Lake	n/a	PD&E Study	February 28, 2019	THOR: n/a
					DATE: March 12, 2019



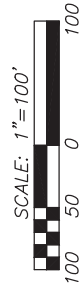
DUKE ENERGY TRANSMISSION - PRELIMINARY EXHIBIT




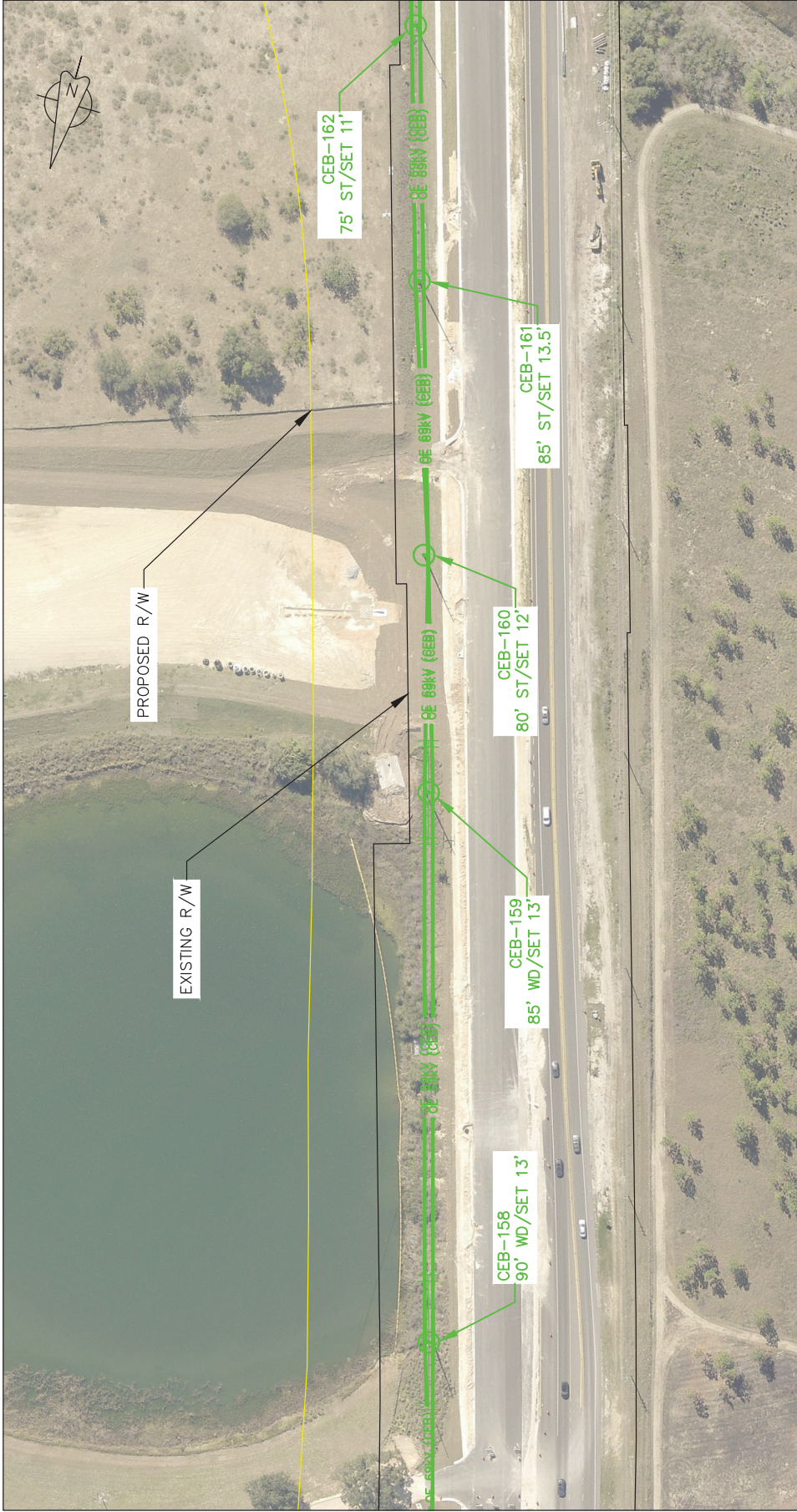
PROVIDED BY: 	PROJECT NAME: CFX Lake/Orange County Connector Feasibility/PD&E Study	PROJECT NUMBER: N/A	COUNTY: Orange/Lake	PLAN STAGE: PRELIM	SHEET NUMBER: 1
---	--	------------------------	------------------------	-----------------------	--------------------



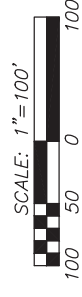
DUKE ENERGY TRANSMISSION - PRELIMINARY EXHIBIT




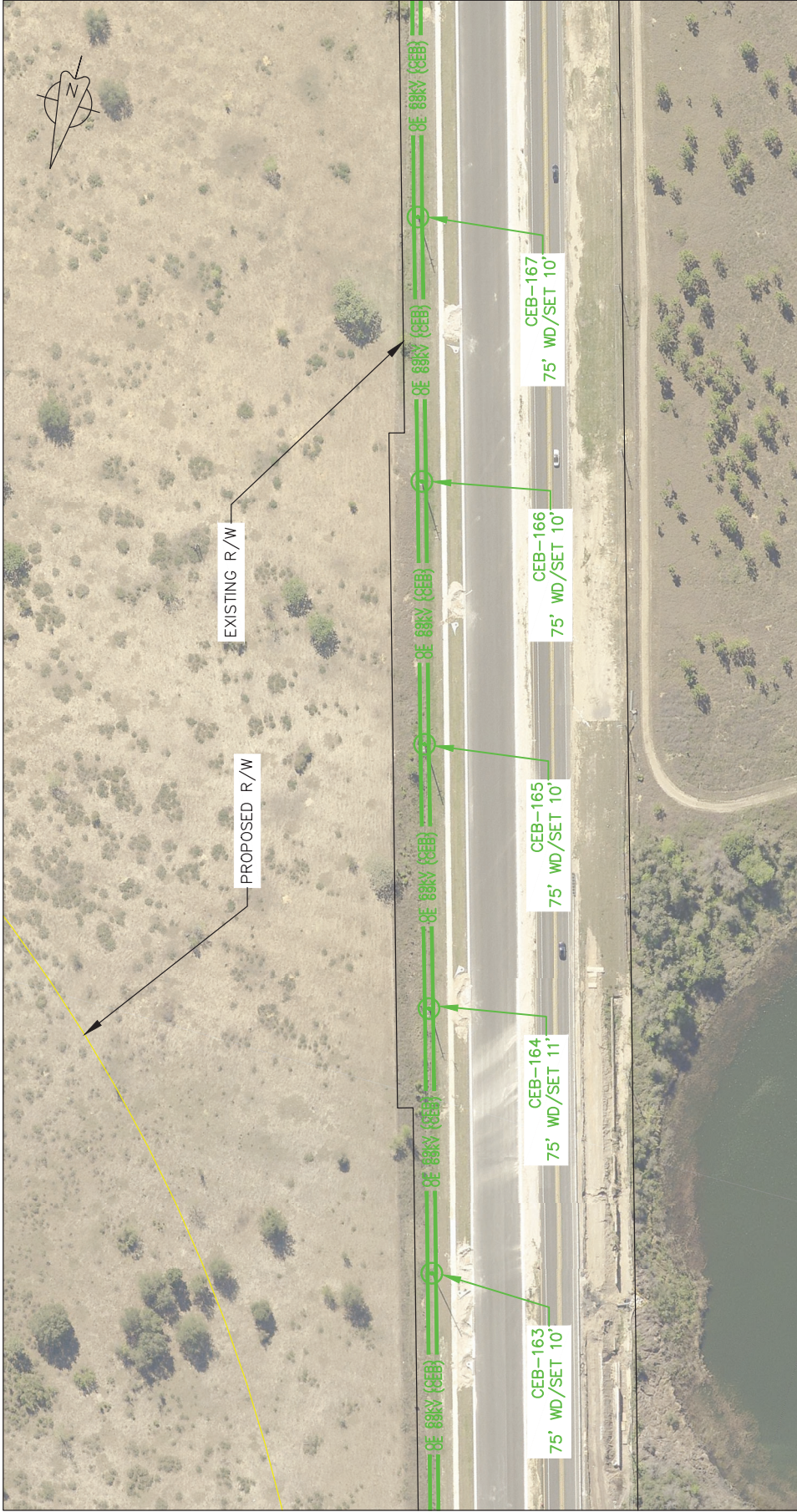
PROVIDED BY: 	PROJECT NAME: CFX Lake/Orange County Connector Feasibility/PD&E Study	PROJECT NUMBER: N/A	COUNTY: Orange/Lake	PLAN STAGE: PRELIM	SHEET NUMBER: 2
---	--	------------------------	------------------------	-----------------------	--------------------



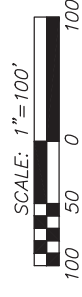
DUKE ENERGY TRANSMISSION - PRELIMINARY EXHIBIT



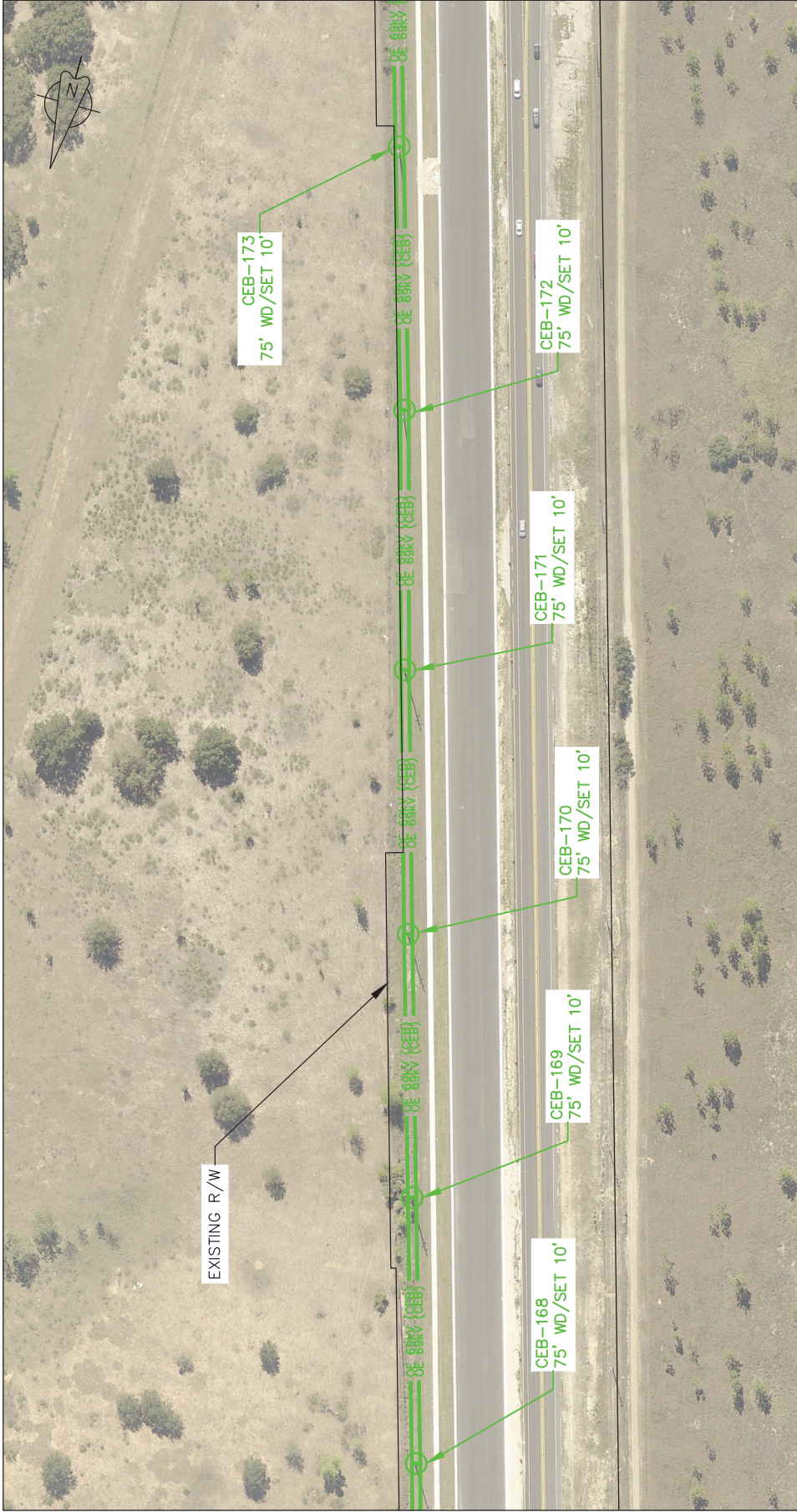
PROVIDED BY: 	PROJECT NAME: CFX Lake/Orange County Connector Feasibility/PD&E Study	PROJECT NUMBER: N/A	COUNTY: Orange/Lake	PLAN STAGE: PRELIM	SHEET NUMBER: 3
---	--	------------------------	------------------------	-----------------------	--------------------



DUKE ENERGY TRANSMISSION – PRELIMINARY EXHIBIT



PROVIDED BY:	PROJECT NAME:	PROJECT NUMBER:	COUNTY:	PLAN STAGE:	SHEET NUMBER:
PIKE ENGINEERING	CFX Lake/Orange County Connector Feasibility/PD&E Study	N/A	Orange/Lake	PRELIM	4

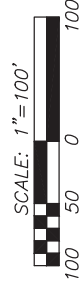


DUKE ENERGY TRANSMISSION - PRELIMINARY EXHIBIT

PROVIDED BY:	PROJECT NAME:	PROJECT NUMBER:	COUNTY:	PLAN STAGE:	SHEET NUMBER:
PIKE ENGINEERING	CFX Lake/Orange County Connector Feasibility/PD&E Study	N/A	Orange/Lake	PRELIM	5



DUKE ENERGY TRANSMISSION - PRELIMINARY EXHIBIT



PROVIDED BY:	PROJECT NAME:	PROJECT NUMBER:	COUNTY:	PLAN STAGE:	SHEET NUMBER:
PIKE ENGINEERING	CFX Lake/Orange County Connector Feasibility/PD&E Study	N/A	Orange/Lake	PRELIM	6



DUKE ENERGY TRANSMISSION - PRELIMINARY EXHIBIT

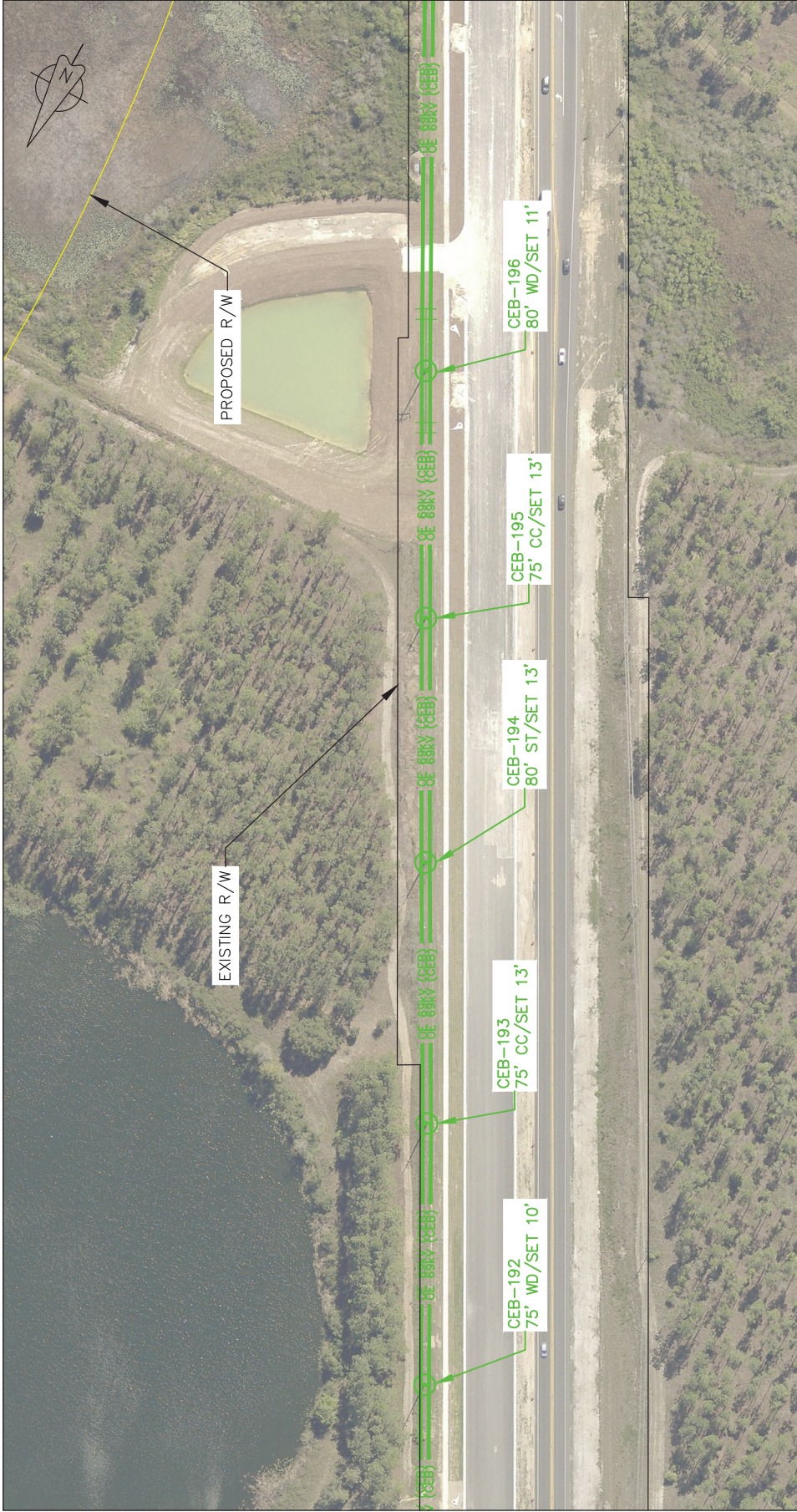


PROVIDED BY:	PROJECT NAME:	PROJECT NUMBER:	COUNTY:	PLAN STAGE:	SHEET NUMBER:
PIKE ENGINEERING	CFX Lake/Orange County Connector Feasibility/PD&E Study	N/A	Orange/Lake	PRELIM	5

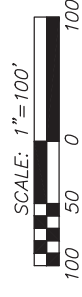


DUKE ENERGY TRANSMISSION - PRELIMINARY EXHIBIT

PROVIDED BY:	PROJECT NAME:	PROJECT NUMBER:	COUNTY:	PLAN STAGE:	SHEET NUMBER:
PIKE ENGINEERING	CFX Lake/Orange County Connector Feasibility/PD&E Study	N/A	Orange/Lake	PRELIM	8



DUKE ENERGY TRANSMISSION - PRELIMINARY EXHIBIT



PROVIDED BY:	PROJECT NAME:	PROJECT NUMBER:	COUNTY:	PLAN STAGE:	SHEET NUMBER:
PIKE ENGINEERING	CFX Lake/Orange County Connector Feasibility/PD&E Study	N/A	Orange/Lake	PRELIM	9



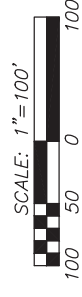
DUKE ENERGY TRANSMISSION - PRELIMINARY EXHIBIT



PROVIDED BY:	PROJECT NAME:	PROJECT NUMBER:	COUNTY:	PLAN STAGE:	SHEET NUMBER:
PIKE ENGINEERING	CFX Lake/Orange County Connector Feasibility/PD&E Study	N/A	Orange/Lake	PRELIM	10



DUKE ENERGY TRANSMISSION - PRELIMINARY EXHIBIT



PROVIDED BY:	PROJECT NAME:	PROJECT NUMBER:	COUNTY:	PLAN STAGE:	SHEET NUMBER:
PIKE ENGINEERING	CFX Lake/Orange County Connector Feasibility/PD&E Study	N/A	Orange/Lake	PRELIM	11

Lake Utilities Inc

Paul Carballo

From: Bryan Gongre <BKGongre@uiwater.com>
Sent: Tuesday, March 5, 2019 3:20 PM
To: Paul Carballo
Cc: William Sloup; Jazlyn Heywood; Gabriela Garcia
Subject: RE: Lake/Orange County Connector PD&E Study - Adjustment of Utilities Letter
Attachments: Basemap - Lake Orange County Connector PDE Study - UIF Mark Up 030519.pdf

Paul,

Attached is a PDF markup of our existing and proposed facilities along the US Hwy 27 corridor within the FDOT ROW. There may also be a future parallel reclaimed water main next to the proposed 12" FM that is indicated on the markup. Sizing of the reclaimed water main has not yet been established. Please let me know if you require additional information.

Regards,

Bryan K. Gongre
Regional Manager

From: Paul Carballo <Paul.Carballo@metriceng.com>
Sent: Thursday, February 28, 2019 3:47 PM
To: Bryan Gongre <BKGongre@uiwater.com>
Cc: William Sloup <william.sloup@metriceng.com>; Jazlyn Heywood <jazlyn.heywood@metriceng.com>; Gabriela Garcia <Gabriela.Garcia@metriceng.com>
Subject: Lake/Orange County Connector PD&E Study - Adjustment of Utilities Letter

CAUTION: This email originated from outside of the organization. Do not click links or open attachments unless you recognize the sender and verify that the content is safe.

February 28, 2019

Mr. Bryan Gongre,
Lake Utilities Services Inc.
200 Weathersfield Avenue
Altamonte Springs, FL 32714

ADJUSTMENT OF UTILITIES – FLORIDA STATUTES CHAPTER 337.403

RE: Project Description: PD&E Study for the Proposed Lake/Orange County Connector
(US 27 to SR 429)
CFX Project Number: 599-225
County: Lake/Orange

The Central Florida Expressway Authority (CFX) is in the development phase for evaluation of several design alternatives and final location design approval relating to the above project. Facilities owned or maintained by your utility

agency/owner (UAO) within the project vicinity may require relocation or adjustment as necessitated by final design selection.

To assist us in selection of the most feasible design alternative while minimizing conflicts with your facilities, a PDF and a KMZ file of the base map are attached. A PDF or KMZ file should be marked with your principal existing and proposed facilities and returned to this office. Along with the PDF or KMZ file, your UAO should also present any general concerns and/or comments that would be useful in the CFX's evaluation process.

If your facilities are located on right of way owned by you, in an easement acquired for your use or if you have other interests within the limits of this project, please inform of us the details so we may take that into consideration on the development of the alternatives. If you have any of the above interests, please mark the approximate boundaries of them on the enclosed PDF and return the same, together with documentation of your interests and a preliminary cost estimate to this office.

Please note that failure to respond to this request will result in plans development without identification of your facilities. In order to maintain project schedules, please return the marked up PDF with your transmittal to this office by **March 20, 2019**.

If you do not have any existing or proposed facilities within the limits of this project, please advise us of that fact in writing. Should additional information be required, please contact me at (407)-644-1898 or via email at william.sloup@metriceng.com. Your cooperation in these matters is appreciated.

Sincerely,

WILLIAM F SLOUP, PE
Vice President of Roadway Design
North/Central FL PD&E MGR



WE'VE MOVED:

525 Technology Park, Suite 153
Lake Mary, FL 32746
Office: (407) 644-1898 ext. 2300
Mobile: (386) 848-5185
Fax: (407) 644-2376
william.sloup@metriceng.com
www.metriceng.com



On behalf of William Sloup, PE,

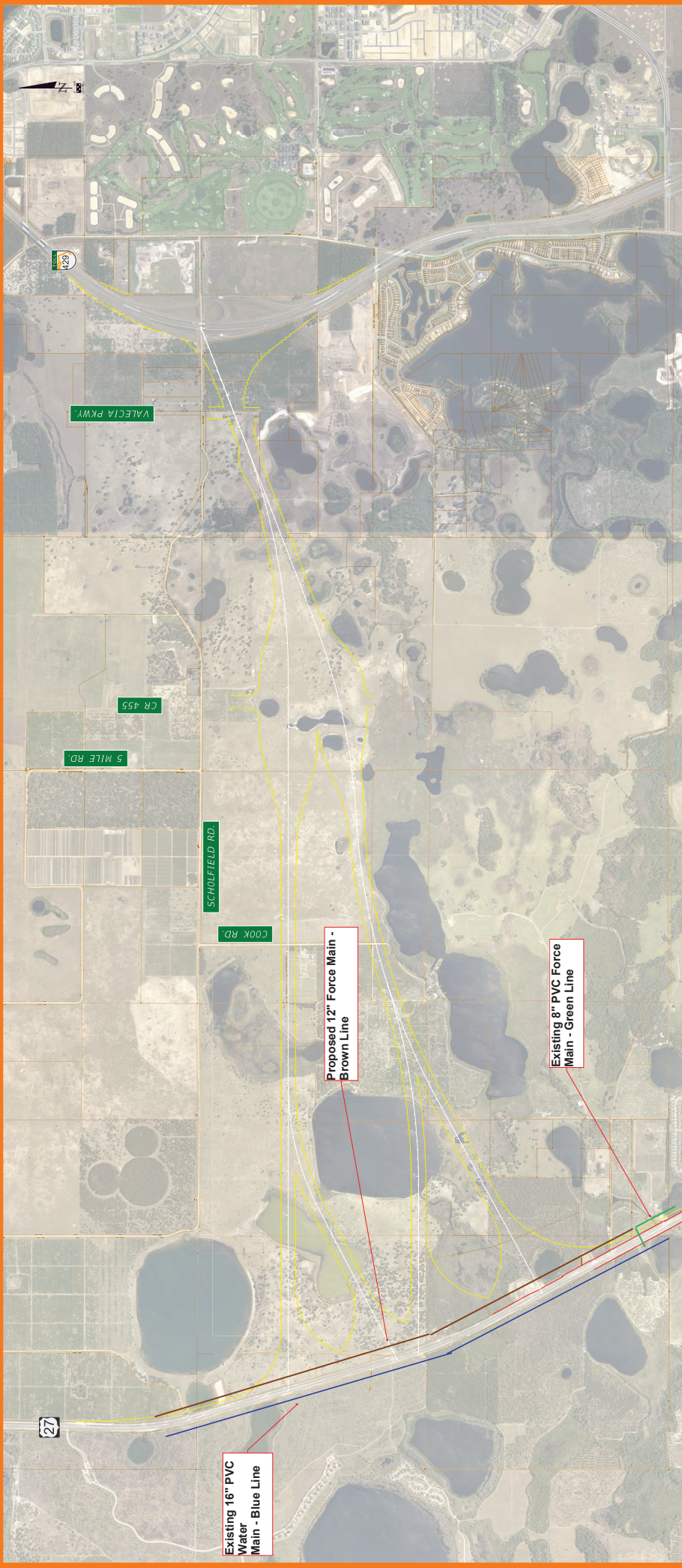
Paul Carballo, EI
Metric Engineering

Attention: The information contained in this E-mail message is privileged and confidential information intended only for the use of the individual(s) named above. If the reader of this message is not the intended recipient, you are hereby notified that any dissemination, distribution or copy of this communication is strictly prohibited. If you have received

this communication in error, please contact the sender by reply E-mail and destroy all copies of the original message.
Thank you.

Attention: The information contained in this E-mail message is privileged and confidential information intended only for the use of the individual(s) named above. If the reader of this message is not the intended recipient, you are hereby notified that any dissemination, distribution or copy of this communication is strictly prohibited. If you have received this communication in error, please contact the sender by reply E-mail and destroy all copies of the original message.
Thank you.

CFX LAKE/ORANGE COUNTY CONNECTOR FEASIBILITY/PD&E STUDY



Existing 16" PVC
Water
Main - Blue Line

Proposed 12" Force Main -
Brown Line

Existing 8" PVC Force
Main - Green Line

Level 3 Communications

Paul Carballo

From: Rypkema, Xan <xan.rypikema@centurylink.com>
Sent: Friday, March 8, 2019 4:44 PM
To: Paul Carballo
Subject: No Facilities 599-225 PD&E Study for the Proposed Lake/Orange County Connector, Clermont FL
Attachments: map.pdf

No facilities:

CenturyLink Communications, LLC (National Fiber Optic longhaul/metro network) has received your utility notice. After reviewing the information you provided it has been determined that CenturyLink does not have facilities within the scope of the Project. Therefore it will not be necessary for CenturyLink to relocate or adjust the facilities.

Any changes or additions to the Project plans or parameters should be submitted to CenturyLink for review of potential new impacts to the CenturyLink facilities. Please reference the file number **152592 FL** with any future communications.

Please make certain that you coordinate with your local Call Before You Dig program to identify any other utilities in the area of your project.

Thank you,
Xan Marie Rypkema
Business Analyst
Relocations Department
CenturyLink
1025 Eldorado Blvd
Broomfield CO 80021
p: 720.888.1089
e: xan.rypikema@centurylink.com



NationalRelo@centurylink.com

**Please send all future utility requests via e-mail to NationalRelo@centurylink.com with a detailed letter stating the project information and any existing plans. Electronic copies (opposed to physical copies) ensure efficient and accelerated communication between both parties. If there are outstanding circumstances in which this request cannot be met, please advise us of such. We appreciate you*

This communication is the property of CenturyLink and may contain confidential or privileged information. Unauthorized use of this communication is strictly prohibited and may be unlawful. If you have received this communication in error, please immediately notify the sender by reply e-mail and destroy all copies of the communication and any attachments. Attention: The information contained in this E-mail message is privileged and confidential information intended only for the use of the individual(s) named above. If the reader of this message is not the intended recipient, you are hereby notified that any dissemination, distribution or copy of this communication is strictly prohibited. If you have received this communication in error, please contact the sender by reply E-mail and destroy all copies of the original message. Thank you.

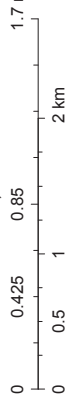
CenturyLink and Level 3 Network



March 8, 2019

- | | | | | | |
|--|--|--|--|--|---|
| <ul style="list-style-type: none"> Owned Leased CTL National Aerial - All Owned Leased CTL National Aerial - Metro | <ul style="list-style-type: none"> LONGHAUL Metro LONGHAUL Owned | <ul style="list-style-type: none"> Leased CTL National Underground - All Metro Longhaul LONGHAUL Owned | <ul style="list-style-type: none"> Non Level 3 Facilities Aerial Underground Streets Highways Railroad Rivers | <ul style="list-style-type: none"> Cities US Counties Interstates Highways Major Roads Highways Secondary Roads | <ul style="list-style-type: none"> NA Railroads Lakes and Ponds Streams City Limits Counties |
|--|--|--|--|--|---|

1:36,112



Level 3 Data is Highly Confidential and Proprietary.
 Sources: Esri, HERE, Garmin, USGS, Intermap, INCREMENT P, NRCan, Esri Japan, METI, Esri China (Hong Kong), Esri Korea, Esri (Thailand), NGCC, © OpenStreetMap contributors, and the GIS User Community

Persons working in the area covered by this data must contact the statewide Call Before You Dig System to ascertain the location of underground facilities prior to performing any excavation. CenturyLink and Level 3 Data is Highly Confidential and Proprietary
 CenturyLink and Level 3 Communications Data is Confidential

Orange County Utilities

Paul Carballo

From: Jose.Hernandez2@ocfl.net
Sent: Monday, March 25, 2019 10:11 AM
To: Paul Carballo
Cc: William Sloup; Jazlyn Heywood; Gabriela Garcia
Subject: RE: Lake/Orange County Connector PD&E Study - Adjustment of Utilities Letter

Paul,

The only facility that OCU has within the project corridor is the Conserv II pipeline that Conserv II has been coordinating directly. Please let me know if that has not been the case, and I will follow up with Woodard & Curran who operates the system for the City and the County.

Thanks,
Jose Hernandez, P.E.
Chief Engineer
Orange County Utilities
9150 Curry Ford Road
Orlando, Florida 32825
(407) 254-9718 – phone
(407) 254-9999 – fax

From: Paul Carballo [mailto:Paul.Carballo@metriceng.com]
Sent: Monday, March 25, 2019 8:59 AM
To: Hernandez, Jose
Cc: William Sloup; Jazlyn Heywood; Gabriela Garcia; Christa.Gandenberger@ocfl.net
Subject: RE: Lake/Orange County Connector PD&E Study - Adjustment of Utilities Letter

Good morning Mr. Hernandez,

Just wanted to follow up on the email below.

Thank you,

PAUL CARBALLO, E.I.
Highway Designer



13940 SW 136th St, Miami, FL 33186
Office: (786) 578-0835
paul.carballo@metriceng.com
www.metriceng.com

 Follow Us

Vice President of Roadway Design
North/Central FL PD&E MGR



WE'VE MOVED:

525 Technology Park, Suite 153
Lake Mary, FL 32746
Office: (407) 644-1898 ext. 2300
Mobile: (386) 848-5185
Fax: (407) 644-2376
william.sloup@metriceng.com
www.metriceng.com



On behalf of William Sloup, PE,

Paul Carballo, EI
Metric Engineering

Attention: The information contained in this E-mail message is privileged and confidential information intended only for the use of the individual(s) named above. If the reader of this message is not the intended recipient, you are hereby notified that any dissemination, distribution or copy of this communication is strictly prohibited. If you have received this communication in error, please contact the sender by reply E-mail and destroy all copies of the original message. Thank you.

PLEASE NOTE: Florida has a very broad public records law (F. S. 119).
All e-mails to and from County Officials are kept as a public record.
Your e-mail communications, including your e-mail address may be disclosed to the public and media at any time.

Attention: The information contained in this E-mail message is privileged and confidential information intended only for the use of the individual(s) named above. If the reader of this message is not the intended recipient, you are hereby notified that any dissemination, distribution or copy of this communication is strictly prohibited. If you have received this communication in error, please contact the sender by reply E-mail and destroy all copies of the original message. Thank you.

Orlando Telephone Company
dba Summit Broadband

Paul Carballo

From: Michelle Daniel <mdaniel@summit-broadband.com>
Sent: Thursday, March 14, 2019 3:07 PM
To: Paul Carballo
Cc: Walt Malone
Subject: RE: Lake/Orange County Connector PD&E Study - Adjustment of Utilities Letter
Attachments: Basemap - Lake Orange County Connector PDE Study.pdf

Good day Paul ,
Attached you will find the marked map you provided to us to show the location of facilities. Please review and if you have any questions feel free to contact us.

Thank you.

From: Paul Carballo <Paul.Carballo@metriceng.com>
Sent: Thursday, February 28, 2019 3:48 PM
To: Michael Brach <michael.brach@summit-broadband.com>; permit <permit@summit-broadband.com>
Cc: William Sloup <william.sloup@metriceng.com>; Jazlyn Heywood <jazlyn.heywood@metriceng.com>; Gabriela Garcia <Gabriela.Garcia@metriceng.com>
Subject: Lake/Orange County Connector PD&E Study - Adjustment of Utilities Letter

February 28, 2019

Mr. Aaron Pickle,
Orlando Telephone Company
dba Summit Broadband
4558 SW 35 Street, Suite 100
Orlando, Florida 32811

ADJUSTMENT OF UTILITIES – FLORIDA STATUTES CHAPTER 337.403

RE: Project Description: PD&E Study for the Proposed Lake/Orange County Connector
(US 27 to SR 429)
CFX Project Number: 599-225
County: Lake/Orange

The Central Florida Expressway Authority (CFX) is in the development phase for evaluation of several design alternatives and final location design approval relating to the above project. Facilities owned or maintained by your utility agency/owner (UAO) within the project vicinity may require relocation or adjustment as necessitated by final design selection.

To assist us in selection of the most feasible design alternative while minimizing conflicts with your facilities, a PDF and a KMZ file of the base map are attached. A PDF or KMZ file should be marked with your principal existing and proposed facilities and returned to this office. Along with the PDF or KMZ file, your UAO should also present any general concerns and/or comments that would be useful in the CFX's evaluation process.

If your facilities are located on right of way owned by you, in an easement acquired for your use or if you have other interests within the limits of this project, please inform of us the details so we may take that into consideration on the development of the alternatives. If you have any of the above interests, please mark the approximate boundaries of them on the enclosed PDF and return the same, together with documentation of your interests and a preliminary cost estimate to this office.

Please note that failure to respond to this request will result in plans development without identification of your facilities. In order to maintain project schedules, please return the marked up PDF with your transmittal to this office by **March 20, 2019**.

If you do not have any existing or proposed facilities within the limits of this project, please advise us of that fact in writing. Should additional information be required, please contact me at (407)-644-1898 or via email at william.sloup@metriceng.com. Your cooperation in these matters is appreciated.

Sincerely,

WILLIAM F SLOUP, PE
Vice President of Roadway Design
North/Central FL PD&E MGR



WE'VE MOVED:

525 Technology Park, Suite 153
Lake Mary, FL 32746
Office: (407) 644-1898 ext. 2300
Mobile: (386) 848-5185
Fax: (407) 644-2376
william.sloup@metriceng.com
www.metriceng.com

 **Follow Us**

On behalf of William Sloup, PE,

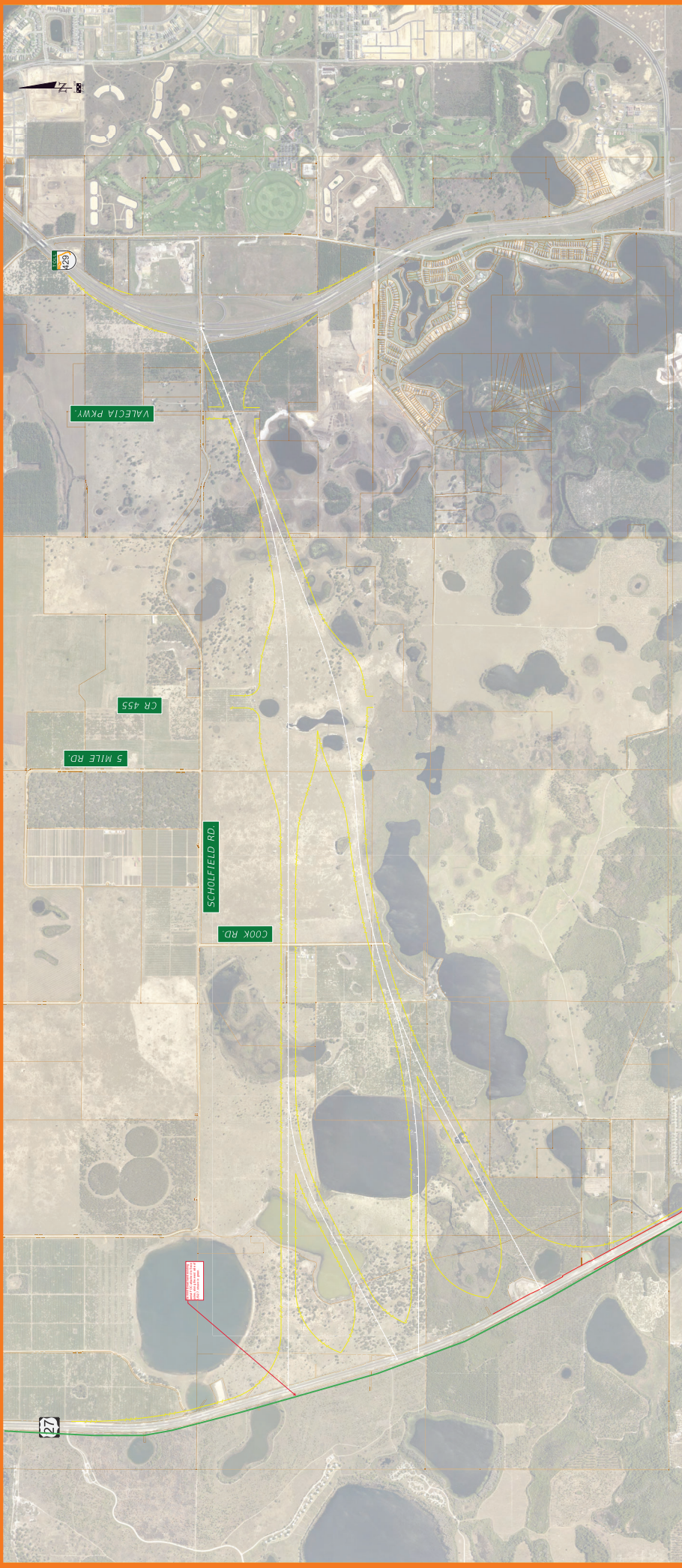
Paul Carballo, EI
Metric Engineering

Attention: The information contained in this E-mail message is privileged and confidential information intended only for the use of the individual(s) named above. If the reader of this message is not the intended recipient, you are hereby notified that any dissemination, distribution or copy of this communication is strictly prohibited. If you have received this communication in error, please contact the sender by reply E-mail and destroy all copies of the original message. Thank you.

This electronic message contains information from Summit Broadband Inc. which may be confidential or privileged. The information is intended to be for the use of the individual or entity named above. If you are not the intended recipient, be aware that any disclosure, copying, distribution or use of the contents of this information is prohibited. XXII
Attention: The information contained in this E-mail message is privileged and confidential information intended only for the use of the individual(s) named above. If the reader of this message is not the intended recipient, you are hereby

notified that any dissemination, distribution or copy of this communication is strictly prohibited. If you have received this communication in error, please contact the sender by reply E-mail and destroy all copies of the original message. Thank you.

CFX LAKE/ORANGE COUNTY CONNECTOR FEASIBILITY/PD&E STUDY



Smart City Solutions

Paul Carballo

Subject: SmartCity Lake/Orange County Connector PD&E Study - Adjustment of Utilities Letter
Attachments: Basemap - Lake Orange County Connector PD&E Study.kmz; Cable location between Porter Rd and Seidel Rd, 121614, GoogleEarth_Image.jpg; Basemap - Lake Orange County Connector PD&E Study.pdf

From: David Cawley <DCawley@smartcity.com>
Sent: Tuesday, March 5, 2019 4:07 PM
To: Paul Carballo <Paul.Carballo@metriceng.com>
Cc: William Sloup <william.sloup@metriceng.com>; Jazlyn Heywood <jazlyn.heywood@metriceng.com>; Gabriela Garcia <Gabriela.Garcia@metriceng.com>; Guy Bower <gbower@smartcity.com>; Luis Diaz <ldiaz@smartcity.com>; Karina Garib <KGarib@smartcitytelecom.com>
Subject: RE: Lake/Orange County Connector PD&E Study - Adjustment of Utilities Letter

Hi Paul,

Smart City Solutions II, LLC does not have facilities in your planned roadway area. Our nearest cable is part aerial and buried on the east side of Avalon Rd. I included a sketch showing the location.

Hope this helps,

David Cawley
Chief Designer
Smart City Telecom
O: 407.828.6648
C: 321.231.3475
F: 407.828.6751
Email: dcawley@smartcity.com



<https://www.smartcitytelecom.com>

From: Paul Carballo [<mailto:Paul.Carballo@metriceng.com>]
Sent: Thursday, February 28, 2019 3:49 PM
To: David Cawley <DCawley@smartcity.com>
Cc: William Sloup <william.sloup@metriceng.com>; Jazlyn Heywood <jazlyn.heywood@metriceng.com>; Gabriela Garcia <Gabriela.Garcia@metriceng.com>
Subject: Lake/Orange County Connector PD&E Study - Adjustment of Utilities Letter

February 28, 2019

Mr. David Cawley,
Smart City Solutions
PO Box 22555

ADJUSTMENT OF UTILITIES – FLORIDA STATUTES CHAPTER 337.403

RE: Project Description: PD&E Study for the Proposed Lake/Orange County Connector
(US 27 to SR 429)
CFX Project Number: 599-225
County: Lake/Orange

The Central Florida Expressway Authority (CFX) is in the development phase for evaluation of several design alternatives and final location design approval relating to the above project. Facilities owned or maintained by your utility agency/owner (UAO) within the project vicinity may require relocation or adjustment as necessitated by final design selection.

To assist us in selection of the most feasible design alternative while minimizing conflicts with your facilities, a PDF and a KMZ file of the base map are attached. A PDF or KMZ file should be marked with your principal existing and proposed facilities and returned to this office. Along with the PDF or KMZ file, your UAO should also present any general concerns and/or comments that would be useful in the CFX's evaluation process.

If your facilities are located on right of way owned by you, in an easement acquired for your use or if you have other interests within the limits of this project, please inform of us the details so we may take that into consideration on the development of the alternatives. If you have any of the above interests, please mark the approximate boundaries of them on the enclosed PDF and return the same, together with documentation of your interests and a preliminary cost estimate to this office.

Please note that failure to respond to this request will result in plans development without identification of your facilities. In order to maintain project schedules, please return the marked up PDF with your transmittal to this office by **March 20, 2019**.

If you do not have any existing or proposed facilities within the limits of this project, please advise us of that fact in writing. Should additional information be required, please contact me at (407)-644-1898 or via email at william.sloup@metriceng.com. Your cooperation in these matters is appreciated.

Sincerely,

WILLIAM F SLOUP, PE
Vice President of Roadway Design
North/Central FL PD&E MGR



WE'VE MOVED:

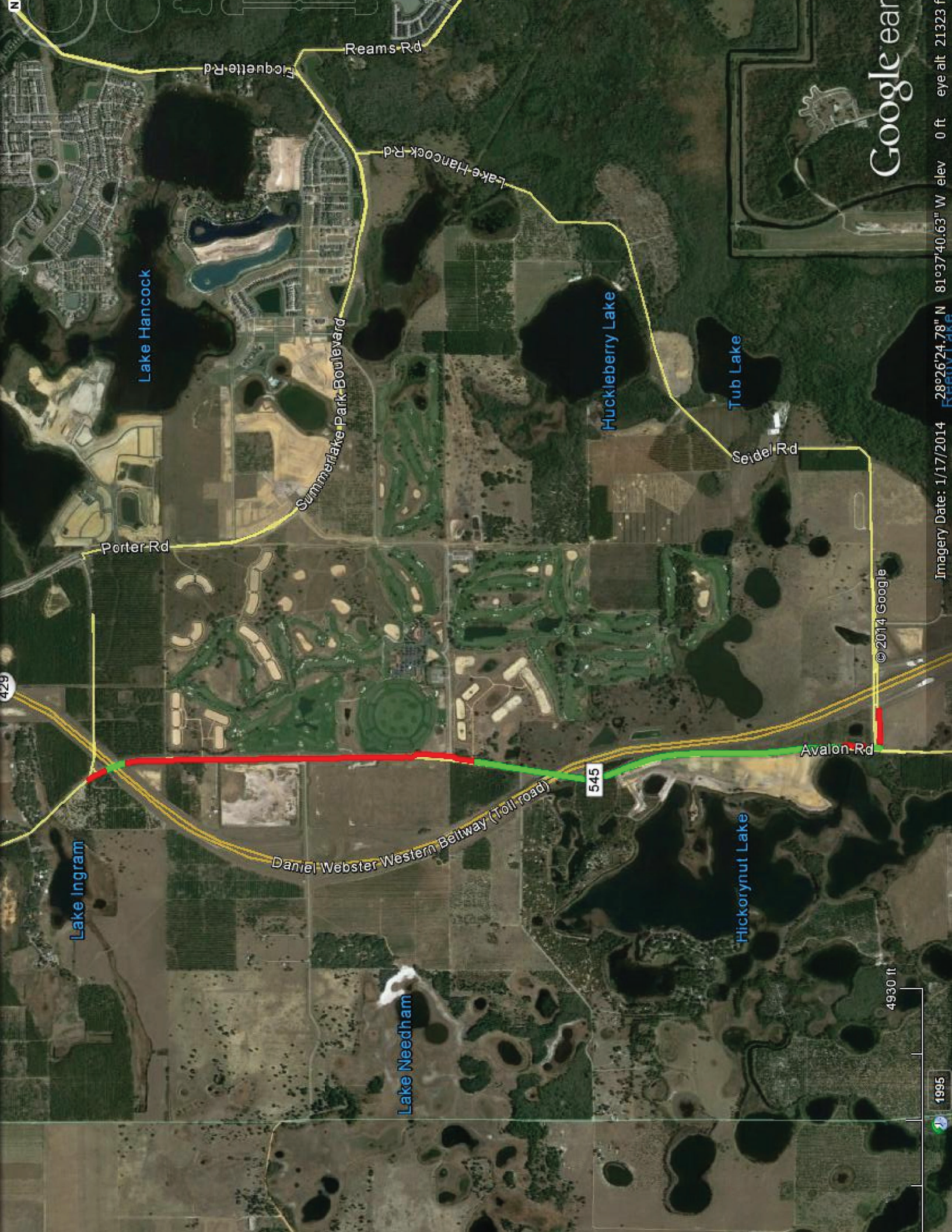
525 Technology Park, Suite 153
Lake Mary, FL 32746
Office: (407) 644-1898 ext. 2300
Mobile: (386) 848-5185
Fax: (407) 644-2376
william.sloup@metriceng.com
www.metriceng.com

On behalf of William Sloup, PE,

Paul Carballo, EI
Metric Engineering

Attention: The information contained in this E-mail message is privileged and confidential information intended only for the use of the individual(s) named above. If the reader of this message is not the intended recipient, you are hereby notified that any dissemination, distribution or copy of this communication is strictly prohibited. If you have received this communication in error, please contact the sender by reply E-mail and destroy all copies of the original message. Thank you.

Attention: The information contained in this E-mail message is privileged and confidential information intended only for the use of the individual(s) named above. If the reader of this message is not the intended recipient, you are hereby notified that any dissemination, distribution or copy of this communication is strictly prohibited. If you have received this communication in error, please contact the sender by reply E-mail and destroy all copies of the original message. Thank you.



Sumter Electric Cooperative (SECO)

Paul Carballo

From: William Sloup
Sent: Wednesday, March 27, 2019 7:58 AM
To: Paul Carballo
Cc: Gabriela Garcia
Subject: FW: Lake/Orange County Connector PD&E Study - Adjustment of Utilities Letter
Attachments: SECO Markup Basemap - Lake Orange County Connector PDE Study.pdf

Please find the attached utility mark ups.

WILLIAM F SLOUP, PE
Vice President of Roadway Design
North/Central FL PD&E MGR



WE'VE MOVED:

525 Technology Park, Suite 153
Lake Mary, FL 32746
Office: (407) 644-1898 ext. 2300
Mobile: (386) 848-5185
Fax: (407) 644-2376
william.sloup@metriceng.com
www.metriceng.com

Follow Us

From: William Sloup
Sent: Wednesday, March 27, 2019 7:56 AM
To: 'Robinson, Mitchell' <mitchell.robinson@secoenergy.com>
Cc: Hicks, Marietta <Marietta.Hicks@secoenergy.com>; Boyett, Danny <danny.boyett@secoenergy.com>
Subject: RE: Lake/Orange County Connector PD&E Study - Adjustment of Utilities Letter

Thank you for providing the markups.

WILLIAM F SLOUP, PE
Vice President of Roadway Design
North/Central FL PD&E MGR



WE'VE MOVED:

525 Technology Park, Suite 153
Lake Mary, FL 32746
Office: (407) 644-1898 ext. 2300

Mobile: (386) 848-5185
Fax: (407) 644-2376
william.sloup@metriceng.com
www.metriceng.com

 Follow Us

From: Robinson, Mitchell <mitchell.robinson@secoenergy.com>
Sent: Wednesday, March 27, 2019 7:05 AM
To: William Sloup <william.sloup@metriceng.com>
Cc: Hicks, Marietta <Marietta.Hicks@secoenergy.com>; Boyett, Danny <danny.boyett@secoenergy.com>
Subject: Lake/Orange County Connector PD&E Study - Adjustment of Utilities Letter

Good morning Mr. Sloup,

Please find attached where I have marked SECO Energy facilities within the project area for the above project. Please let me know if you have any questions.

Thank you,

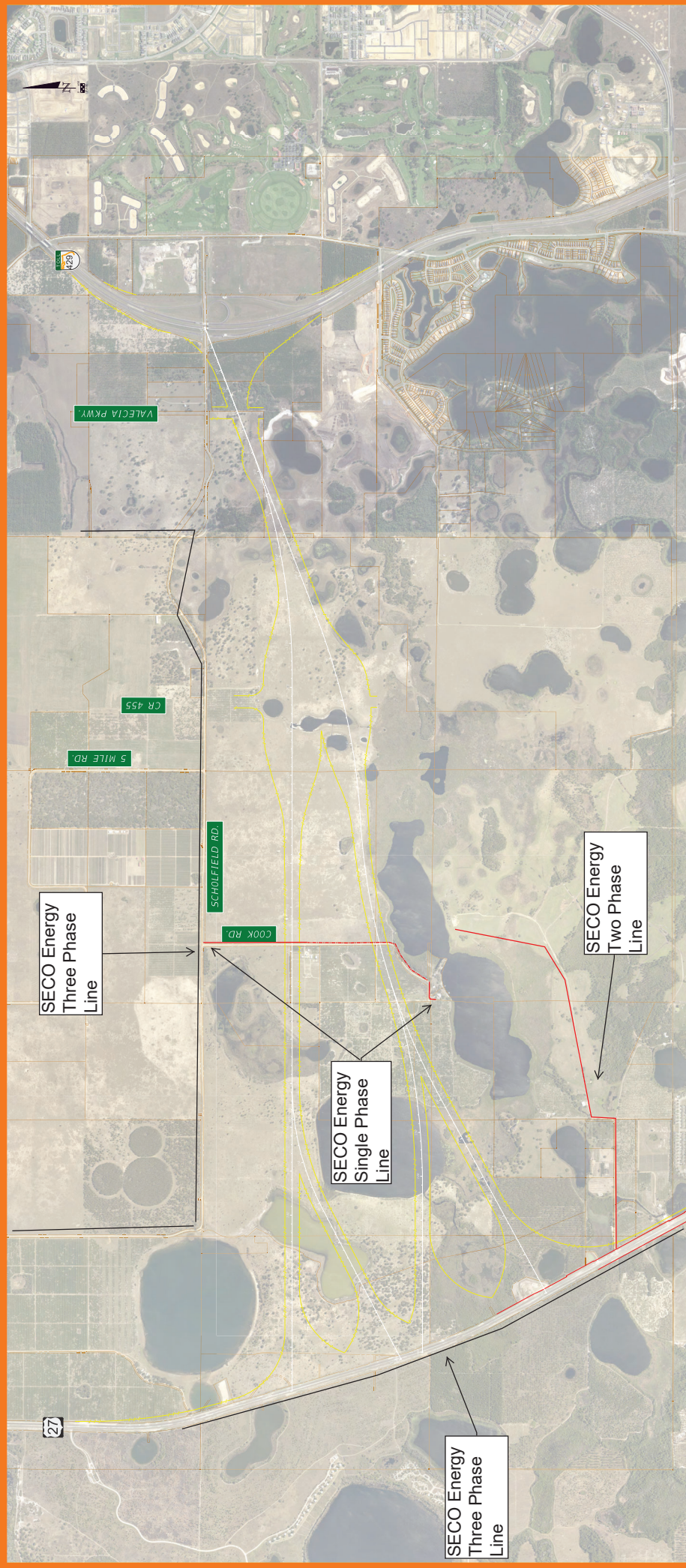
Mitchell Robinson
Project Engineer
SECO Energy
352-569-9638
Mitchell.Robinson@secoenergy.com



Attention: The information contained in this E-mail message is privileged and confidential information intended only for the use of the individual(s) named above. If the reader of this message is not the intended recipient, you are hereby notified that any dissemination, distribution or copy of this communication is strictly prohibited. If you have received this communication in error, please contact the sender by reply E-mail and destroy all copies of the original message. Thank you.

Attention: The information contained in this E-mail message is privileged and confidential information intended only for the use of the individual(s) named above. If the reader of this message is not the intended recipient, you are hereby notified that any dissemination, distribution or copy of this communication is strictly prohibited. If you have received this communication in error, please contact the sender by reply E-mail and destroy all copies of the original message. Thank you.

CFX LAKE/ORANGE COUNTY CONNECTOR FEASIBILITY/PD&E STUDY



SECO Energy
Three Phase
Line

SECO Energy
Single Phase
Line

SECO Energy
Two Phase
Line

SECO Energy
Three Phase
Line

Verizon Business

Paul Carballo

From: keith.e.schemp@verizon.com
Sent: Wednesday, March 13, 2019 10:25 AM
To: Paul Carballo
Subject: RE: Lake/Orange County Connector PD&E Study - Adjustment of Utilities Letter

Paul

Verizonbusiness (MCI) has no facilities in the project area.

As a reminder, please include State, County, and City in your requests. If you're already providing this information, thank you.

PLEASE SEND INQUIRIES TO Investigations@verizon.com



Keith Schemp
Engr Spec III
Wireline Engineering
400 International Pkwy
Richardson, TX 75081

From: Paul Carballo [mailto:Paul.Carballo@metriceng.com]
Sent: Thursday, February 28, 2019 2:49 PM
To: Investigations <Investigations@one.verizon.com>
Cc: William Sloup <william.sloup@metriceng.com>; Jazlyn Heywood <jazlyn.heywood@metriceng.com>; Gabriela Garcia <Gabriela.Garcia@metriceng.com>; Clark, Thomas M <thomas.clark@one.verizon.com>
Subject: Lake/Orange County Connector PD&E Study - Adjustment of Utilities Letter

February 28, 2019

Mr. Thomas Clark,
Verizon f/k/a MCI
Attn: Contract Admin
6929 N. Lakewood Ave
MD. 5.3-4009
Tulsa, Oklahoma 74117

ADJUSTMENT OF UTILITIES – FLORIDA STATUTES CHAPTER 337.403

RE: Project Description: PD&E Study for the Proposed Lake/Orange County Connector
(US 27 to SR 429)
CFX Project Number: 599-225
County: Lake/Orange

The Central Florida Expressway Authority (CFX) is in the development phase for evaluation of several design alternatives and final location design approval relating to the above project. Facilities owned or maintained by your utility agency/owner (UAO) within the project vicinity may require relocation or adjustment as necessitated by final design selection.

To assist us in selection of the most feasible design alternative while minimizing conflicts with your facilities, a PDF and a KMZ file of the base map are attached. A PDF or KMZ file should be marked with your principal existing and proposed facilities and returned to this office. Along with the PDF or KMZ file, your UAO should also present any general concerns and/or comments that would be useful in the CFX's evaluation process.

If your facilities are located on right of way owned by you, in an easement acquired for your use or if you have other interests within the limits of this project, please inform of us the details so we may take that into consideration on the development of the alternatives. If you have any of the above interests, please mark the approximate boundaries of them on the enclosed PDF and return the same, together with documentation of your interests and a preliminary cost estimate to this office.

Please note that failure to respond to this request will result in plans development without identification of your facilities. In order to maintain project schedules, please return the marked up PDF with your transmittal to this office by **March 20, 2019**.

If you do not have any existing or proposed facilities within the limits of this project, please advise us of that fact in writing. Should additional information be required, please contact me at (407)-644-1898 or via email at william.sloup@metriceng.com. Your cooperation in these matters is appreciated.

Sincerely,

WILLIAM F SLOUP, PE
Vice President of Roadway Design
North/Central FL PD&E MGR



WE'VE MOVED:

525 Technology Park, Suite 153
Lake Mary, FL 32746
Office: (407) 644-1898 ext. 2300
Mobile: (386) 848-5185
Fax: (407) 644-2376
william.sloup@metriceng.com
www.metriceng.com

 **Follow Us**

On behalf of William Sloup, PE,

Paul Carballo, EI
Metric Engineering

Attention: The information contained in this E-mail message is privileged and confidential information intended only for the use of the individual(s) named above. If the reader of this message is not the intended recipient, you

are hereby notified that any dissemination, distribution or copy of this communication is strictly prohibited. If you have received this communication in error, please contact the sender by reply E-mail and destroy all copies of the original message. Thank you.

Attention: The information contained in this E-mail message is privileged and confidential information intended only for the use of the individual(s) named above. If the reader of this message is not the intended recipient, you are hereby notified that any dissemination, distribution or copy of this communication is strictly prohibited. If you have received this communication in error, please contact the sender by reply E-mail and destroy all copies of the original message. Thank you.

Water Conserv II

