



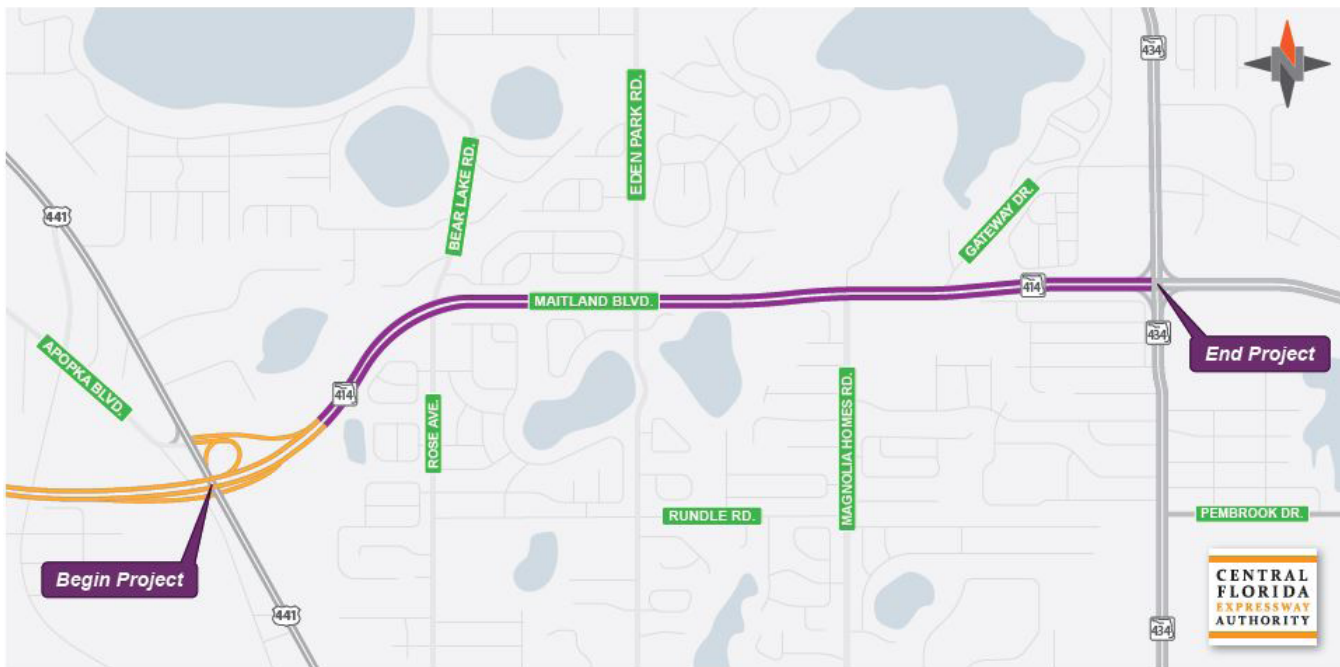
STATE ROAD 414 EXPRESSWAY EXTENSION

PROJECT DEVELOPMENT AND ENVIRONMENT STUDY

SUMMER 2020

In March 2020, CFX, in partnership with the Florida Department of Transportation (FDOT), began a Project Development and Environment (PD&E) Study of the SR 414 Expressway Extension. The study will determine the feasibility of elevated, limited-access toll lanes along the median of SR 414 (Maitland Boulevard) to provide direct access from the SR 414 (John Land Apopka Expressway) to Interstate 4 (I-4).

STUDY MAP



STUDY DESCRIPTION

The study area runs from the eastern end of SR 414 (John Land Apopka Expressway) at US 441 (Orange Blossom Trail) to SR 434 (Forest City Road). During peak travel times, drivers can spend nearly a half hour getting through the three signalized intersections in this 2.3-mile stretch of SR 414.

The proposed improvements to reduce traffic congestion include reconfiguring the existing at-grade SR 414 (Maitland Boulevard) to accommodate the SR 414 toll facility while maintaining two SR 414 local access lanes in each direction. The 15-month study, coordinated with the FDOT, will analyze intersection improvements, bridge modifications at Lake Bosse and Little Wekiva River, stormwater management facilities, pedestrian and bicycle needs, and access management modifications.

CENTRAL
FLORIDA
EXPRESSWAY
AUTHORITY



The regional Central Florida Expressway Authority is responsible for the planning, design, construction, operation and maintenance of a 125-mile limited-access expressway system to serve the five-county region. CFX's system includes SR 408 (Spessard L. Holland East-West Expressway), SR 528 (Martin Andersen Beachline Expressway), SR 417 (Central Florida GreeneWay), SR 429 (Daniel Webster Western Beltway), SR 414 (John Land Apopka Expressway), SR 429 (Wekiva Parkway), SR 538 (Poinciana Parkway), State Road 453 and State Road 451.

Central Florida Expressway Authority: 4974 ORL Tower Road, Orlando, FL 32807
Phone: 407.690.5000 | Fax: 407.690.5011 | Email: Info@CFXWay.com



STATE ROAD 414 EXPRESSWAY EXTENSION

PROJECT DEVELOPMENT AND ENVIRONMENT STUDY

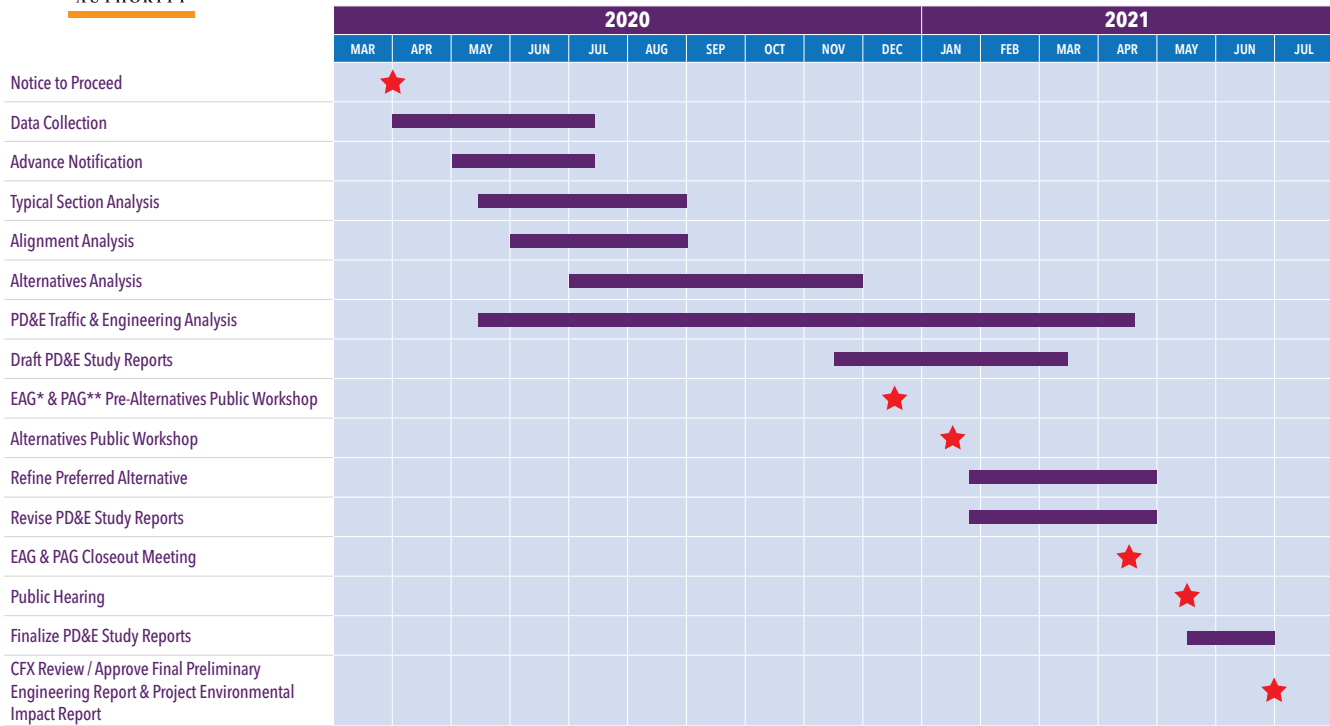
★ STUDY GOALS

The goals of the SR 414 Expressway Extension PD&E Study include:

- Provide needed capacity on SR 414.
- Improve system connectivity between SR 429 and I-4 to meet future traffic needs.
- Improve safety.
- Support multimodal opportunities.



SR 414 Expressway Extension PD&E Study (Subject to Change)



*Environmental Advisory Group **Project Advisory Group

VISIT THE STUDY WEBPAGE AT: <https://bit.ly/2KLmliP>

📄 STUDY PARTICIPATION

We value your input. Public involvement and interagency coordination will be an integral part of the PD&E study, and opportunities for public participation will be provided. CFX anticipates holding two public meetings as part of this study.

For more information:

Contact: Kathy Putnam, Public Involvement Coordinator

📞 407-802-3210

✉️ ProjectStudies@CFXway.com

🌐 www.CFXway.com

🐦 @DriveEPASS



Public participation is solicited without regard to race, color, national origin, age, sex, religion, disability or family status. Para más información en español acerca del proyecto, por favor comuníquese con Kevin Camara al 786-859-1826 o por correo electrónico a Kevin.Camara@QCAusa.com.