



Welcome Central Florida Expressway Authority



Central Florida Expressway Authority

Phil Brown

Executive Director

Greater Orlando Aviation Authority

November 12, 2015

In the Beginning...



The Orlando Experience® Past, Present and Future



1977



Today

Our Commitments

Vision:

Advance Orlando and the region as the premier intermodal transportation gateway for global commerce.



Mission:

Provide safe, secure, customer friendly, affordable transportation services and facilities that promote the Orlando Experience.



Greater Orlando Aviation Authority Board



Frank Kruppenbacher
Chairman



Buddy Dyer
Mayor, City of Orlando



Dean Asher
Vice Chairman



Teresa Jacobs
Mayor, Orange County



Jim Palmer
Board Member



Domingo Sanchez
Treasurer



Ed Fouche
Board Member

Governance

- 7 Directors
 - 2 Ex-Officio
 - 5 appointed by Governor

4th Largest Airport in the United States by Land Mass



✈ 14,000 acres

✈ Larger than JFK, LAX and MIA combined

GOAA & CFX Partnership

Previous Projects

- CFX Administration Building – Land Sale
- SR 408 Widening (south of OEA) – Right-of-Way (ROW)
- SR 528 / SR 436 Interchange Improvements –
Collaboration to obtain Strategic Intermodal System (SIS)
funding



**GREATER ORLANDO
AVIATION AUTHORITY**

**CENTRAL
FLORIDA
EXPRESSWAY
AUTHORITY**

GOAA & CFX Partnership

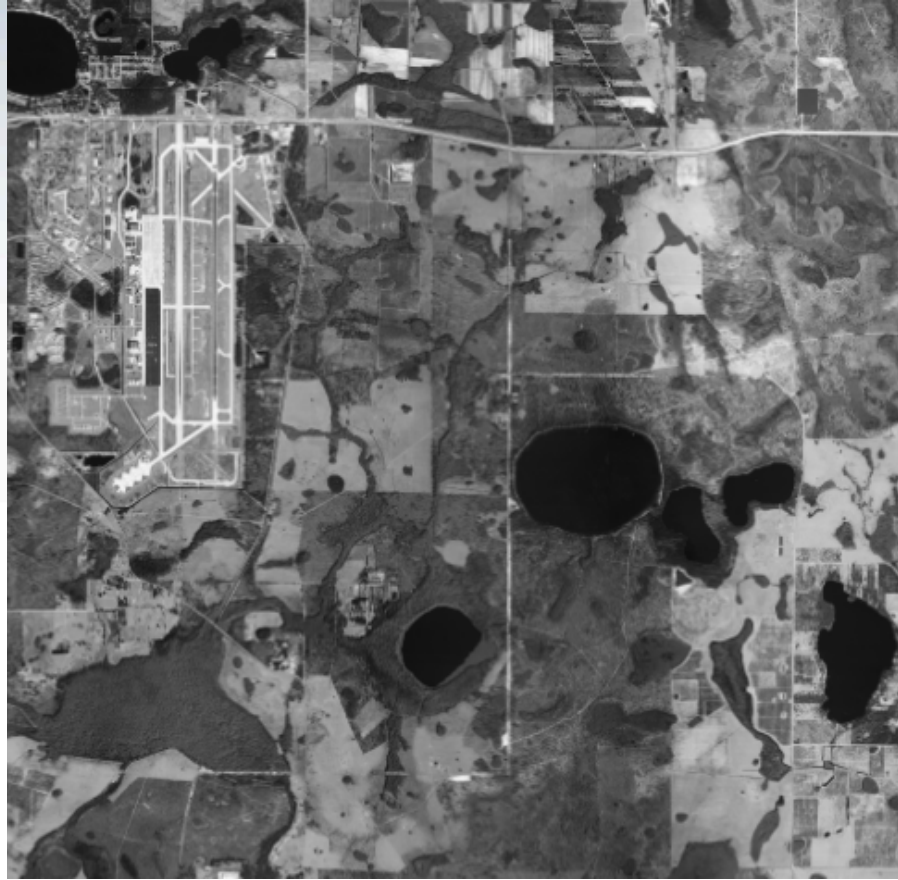
Previous Projects

- SR 528 / Goldenrod Road Interchange Construction - ROW and Funding partner
- SR 528 / SR 15 Interchange improvements – ROW
- Cargo Road extension related to SR 528 widening and SR 528 / SR 15 Interchange improvements
- Pole Squares – Sale of land to GOAA for MCO roadway signs located in the SR 4528/SR436 Interchange

GOAA & CFX Partnership

Current Projects

- SR 528 Toll Plaza removal - Utility Easement and License Agreement for MOT (Maintenance of Traffic)
- Pole Square Easements in SR 528 ROW for existing FAA Navigation equipment
- Sale/purchase of land to facilitate the All Aboard Florida project.



1978

2013

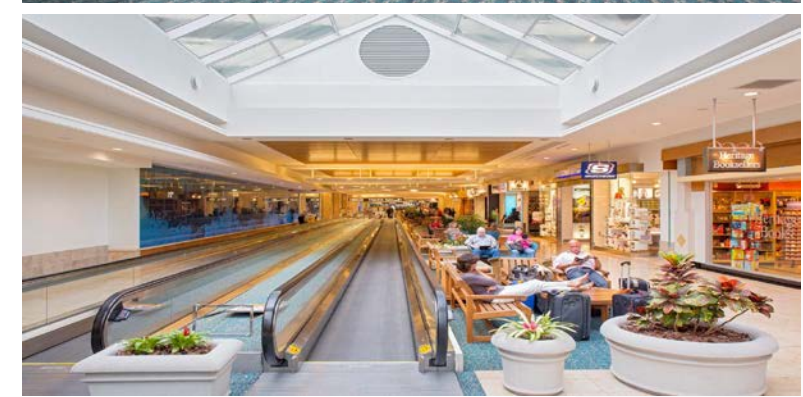






The Orlando Experience[®]
Many definitions, one feeling.
You know you have arrived in Orlando!

A Sense of Place
Reflection of Florida Environment
Light, Water, Florida Foliage, Art
Harmony with the Environment



2015 Overview Passenger Activity

- 37.8 million passengers Rolling 12 Months +7.3%
 - Record international traffic = 4.9 million passengers/ Up 16.6%
 - Sept. International Up 32%
 - Sept. Total Up 12%
 - 103,500 passengers daily
 - Number of airlines
 - 41 total including 4 cargo

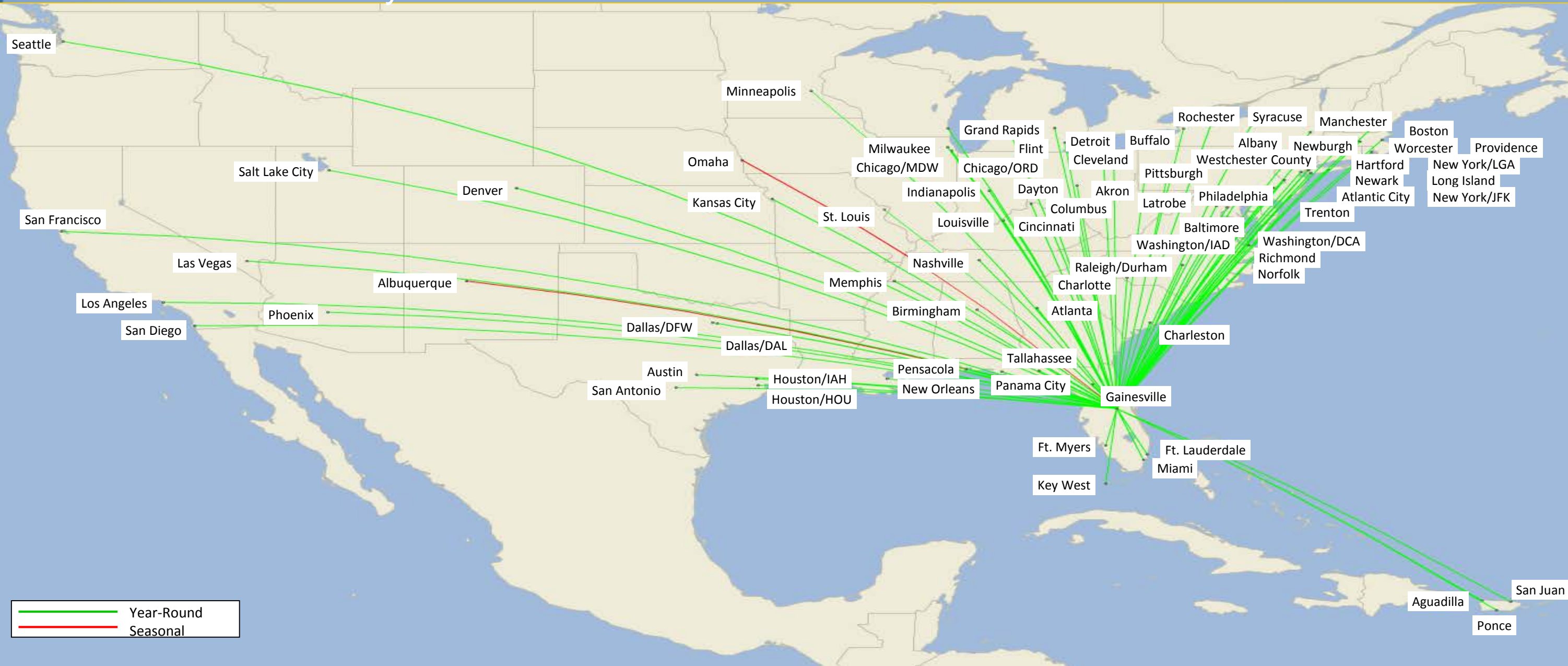


Air Service

MCO has scheduled non-stop service to

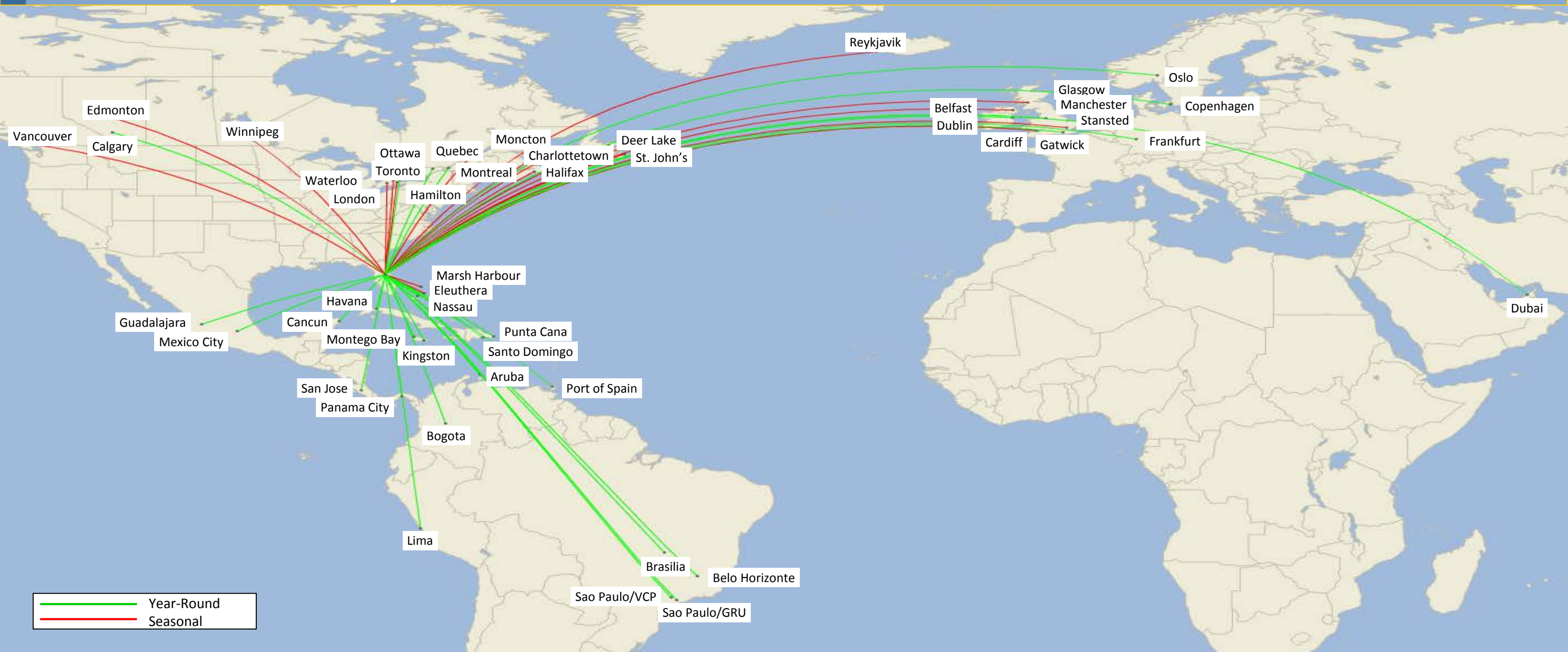
76 U.S. destinations

74 year-round destinations and 2 seasonal destinations



MCO has scheduled non-stop service to 49 international destinations

30 year-round destinations and 19 seasonal destinations



— Year-Round
— Seasonal

Capital Improvements

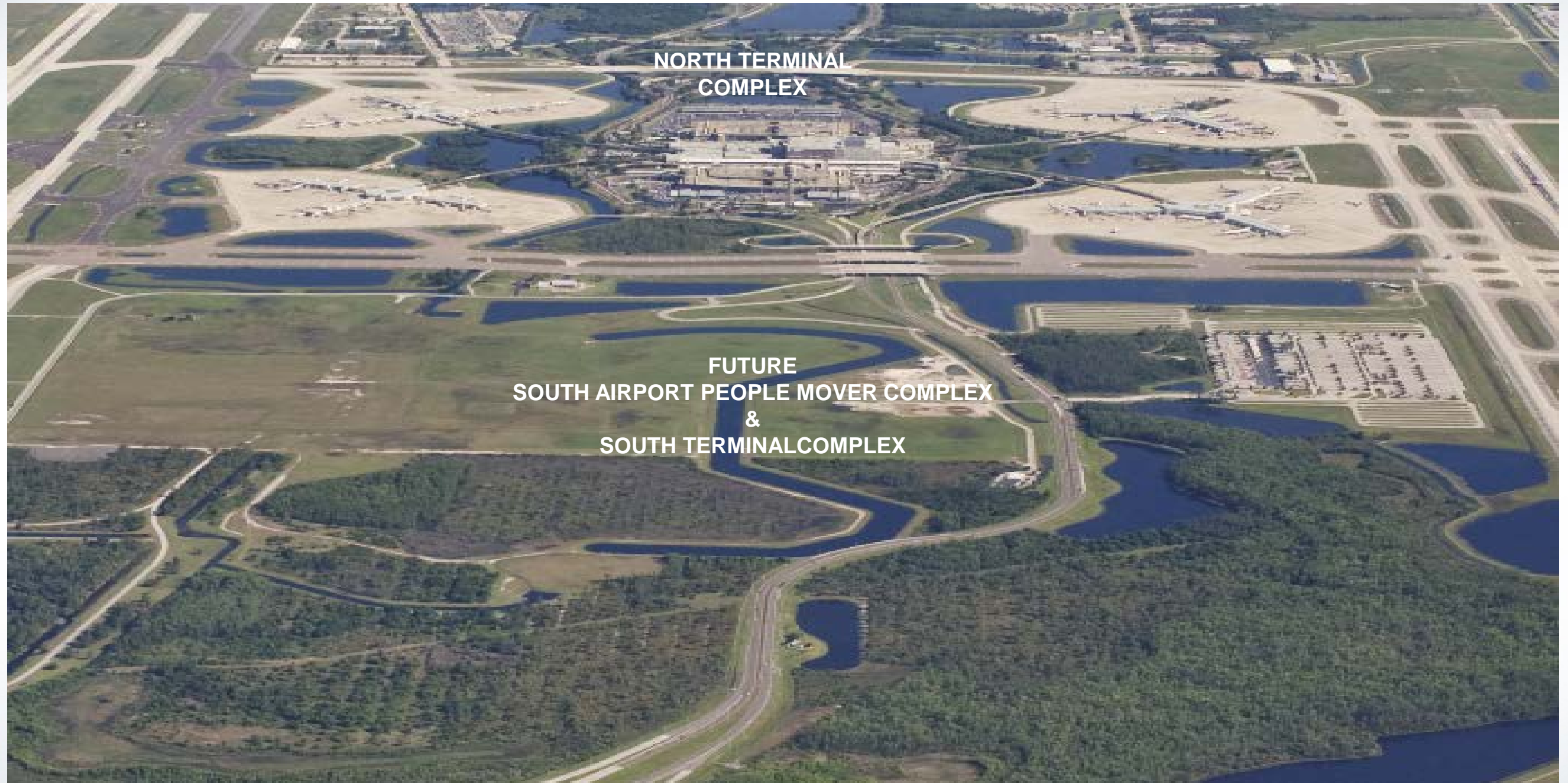
\$1.3B CAPITAL IMPROVEMENTS

MAJOR ELEMENTS

- Maintain existing facilities to standards consistent with The Orlando Experience®
- Modify and expand facilities to achieve practical North Terminal capacity of 42-43 MAP
- Improve international processing to accommodate growth
- Increase multi-modal transportation access
- Develop facilities to generate non-aviation revenue and provide strategic redundancy



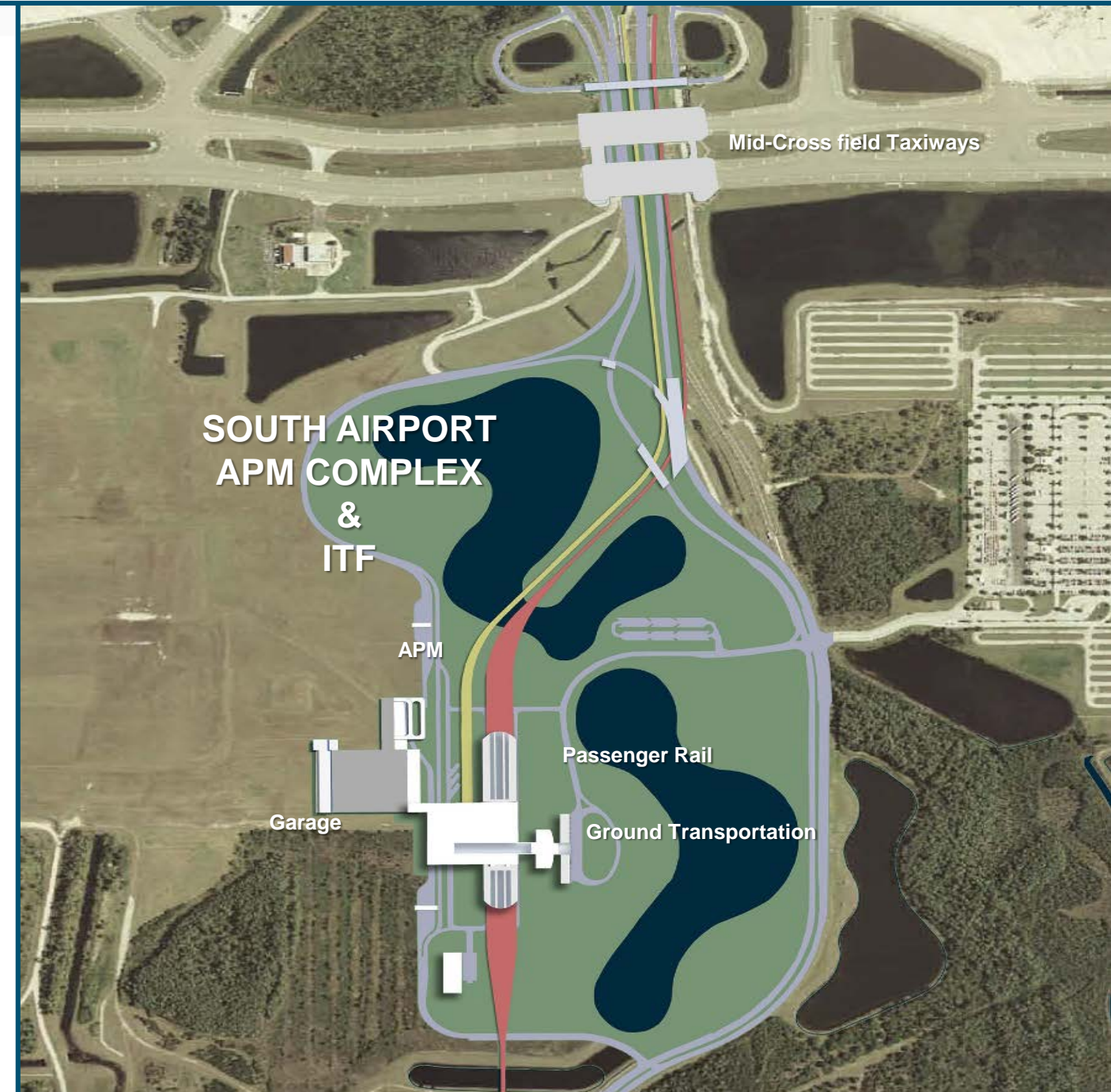
STC FUTURE DEMAND DRIVEN GROWTH



ORLANDO INTERNATIONAL AIRPORT
The Orlando Experience®

SOUTH AIRPORT APM COMPLEX & ITF

- North Terminal Complex (NTC) Capacity Reliever
- Automated People Mover (APM) System from NTC
- 500,000 SF Facility
- 2,400 Car Garage
- Ground Transportation Facility
- Remote Check-In



INTERMODAL TERMINAL COMPLEX



Automated People Mover (APM) Station

Increase multi-modal transportation access

- ❑ South Airport APM Complex
- ❑ Intermodal Terminal Facility (ITF)



Rail was in the original design concepts in the late 1970's

- Rail access depends on
 - Technological Interface
 - Master Plan Compliance
 - External Funding

Rail Connections

Rail Corridors



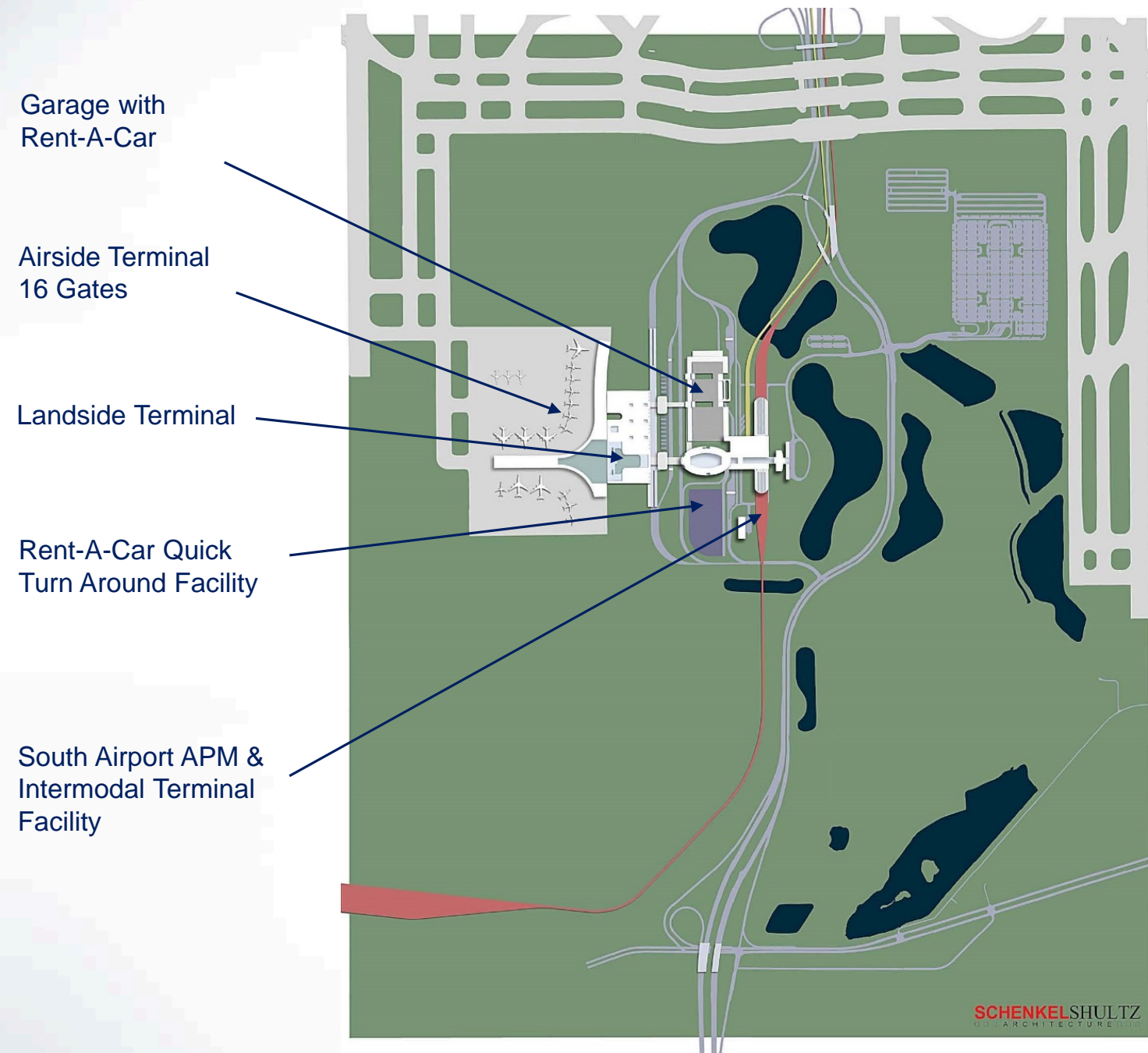
Rail Systems

- All Aboard Florida
 - Orlando-Miami
- SunRail
 - Regional Commuter
- Maglev
 - Convention Center
 - Florida Mall

SOUTH AIRPORT APM COMPLEX & ITF



“Greater Orlando Aviation Authority Board Advanced South Terminal Project at May Meeting”

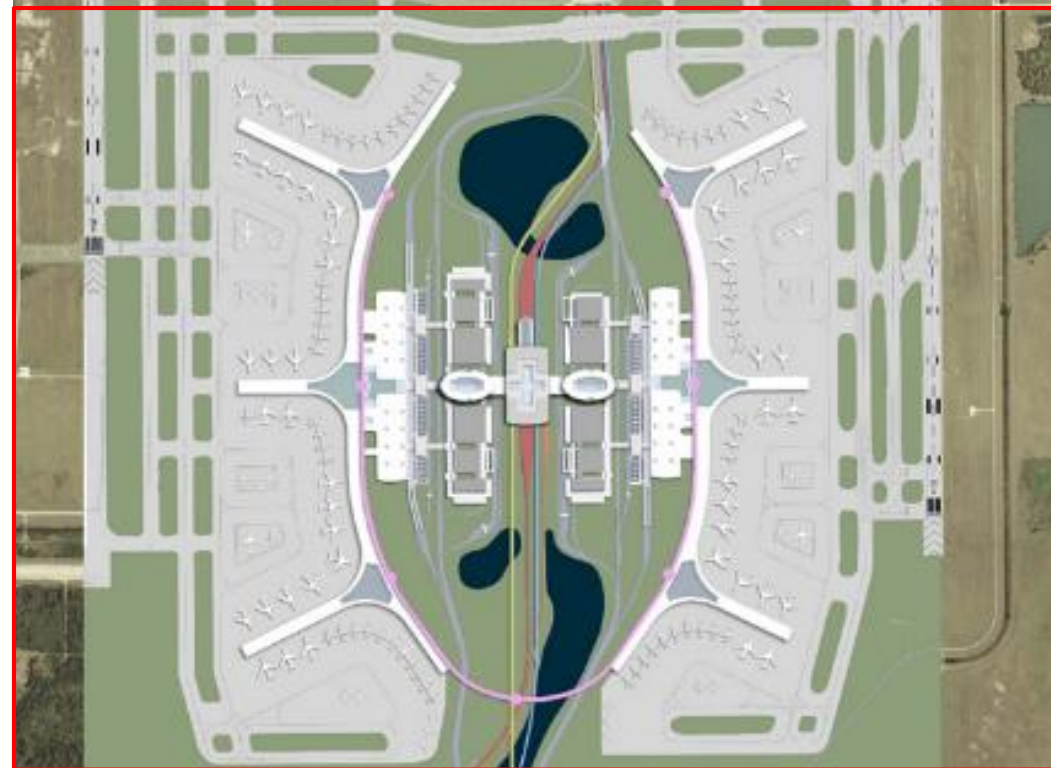


- Triggers for South Terminal Construction
 - 2 Million Annual Arriving International Passengers
 - 38.5 Million Total Passengers (Revised From 40 MAP)

OVERALL AIRPORT COMPLEX



Existing North
Terminal
Complex



Future South
Airport
Complex

In Summary

Intermodal connectivity provides access for passengers and services that benefits the airport and the entire region



Thank You