



LAKE COUNTY  
FLORIDA

# **LakeXpress Presentation to the Central Florida Expressway Authority**

Lake County Community Services Department

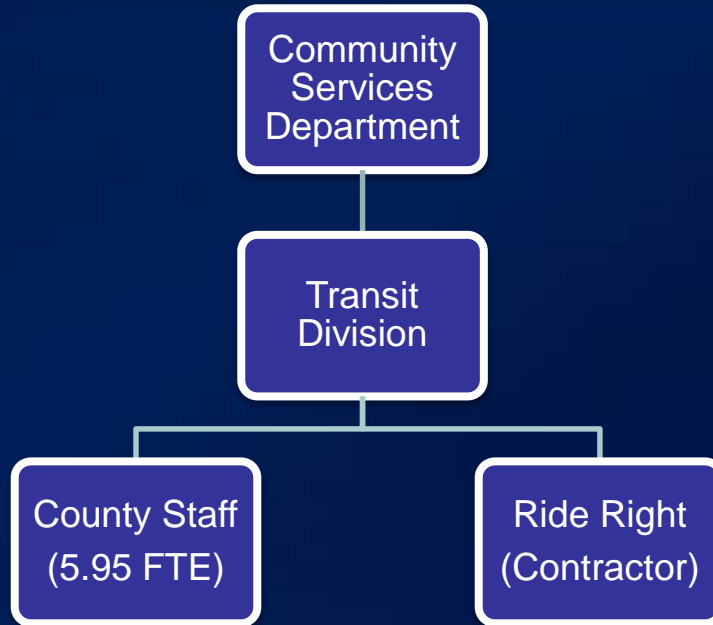
November 12, 2015

# Presentation Overview




- Lake County Community Services Overview
  - Transit Division
- LakeXpress Fixed-Route Services
- New Route 50!
- Future Partnership Opportunities
- Next Steps

# Transit Division Organizational Chart



# LakeXpress Fixed-Route Service Quick Facts

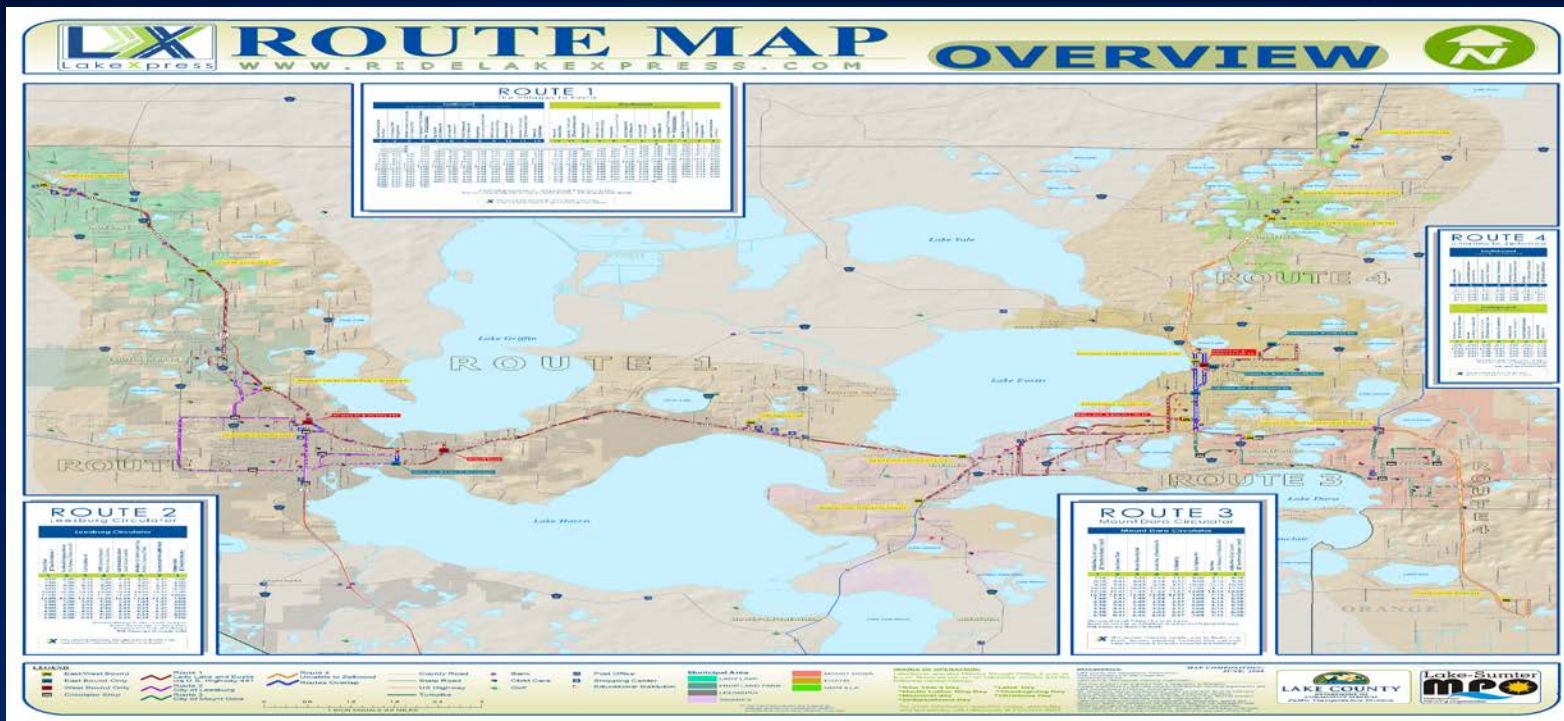


- Four Fixed-Routes serving the following areas:
  - **Route 1** – Lady Lake and Eustis via US-441
  - **Route 2** – City of Leesburg/Lady Lake
  - **Route 3** – City of Mount Dora
  - **Route 4\*** – Altoona to Zellwood – CONNECTS TO 
  - Operates Monday - Friday: 6:00 a.m. – 8:00 p.m.
- Annual Ridership: 312,591 trips in FY 2014

\* Routes 1-3 operate hourly and Route 4 operates every two hours.




**LAKE COUNTY**  
FLORIDA



# Partnership with



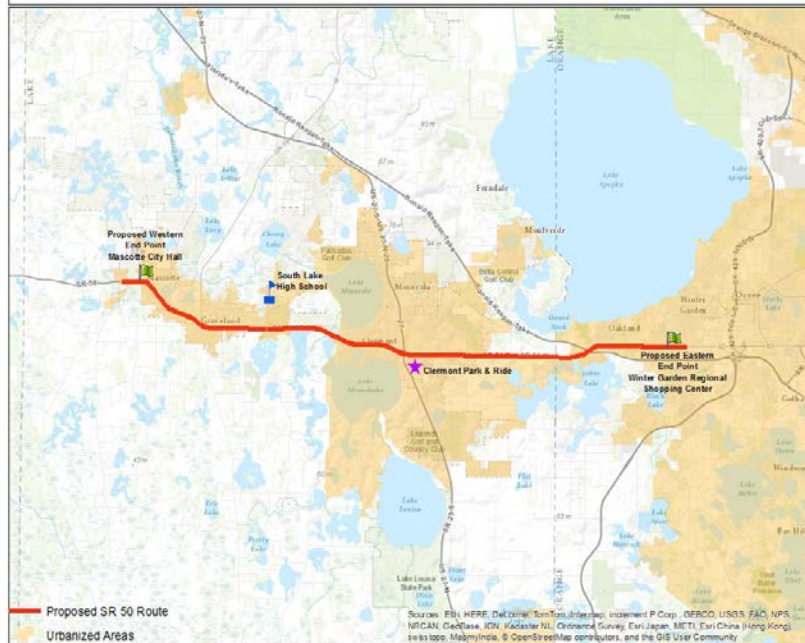
- Lake County currently contracts with  to provide fixed route service from Four Corners area in South Lake County into Orange and Osceola counties (Link 55).
- Link 55 begins at the Four Corner's Walmart and ends at the Kissimmee Intermodal Station in Osceola County.



**NEW!**

# Route 50 LakeXpress Service



Proposed SR 50 LakeXpress Map



- Effective December 1, 2015.
- Economic Development and Employment Connections between South Lake County and Orange County via Mascotte and Winter Garden Regional Shopping Center and 
- Operates Monday – Friday
  - 5:00a.m. – 8:00p.m. (Hourly)
  - Fare: \$1.00
- Expands existing Lake and  Partnership which provides service from Four Corners area into Orange and Osceola Counties.


# Partnership Opportunities with CFX



- Population growth has occurred in South Lake County and Mt. Dora areas.
- Many of those residents commute to major employment centers in neighboring counties.
- Similar population growth expected in East Lake County when the Wekiva Parkway is completed.

# Partnership Opportunities with CFX



- Lake County Transit could provide additional transit opportunities utilizing CFX toll roads to accommodate commuters:
  - Van Pools
  - Express Service/Bus Rapid Transit
  - Expanded partnerships with 

# Next Steps



- Future updates to the Transit Development Plan will focus on analyzing the need to provide options for commuter traffic into neighboring counties.

# Contacts



- Dorothy A. Keedy, AICP  
Director, Department of Community Services  
Phone: 352.742.6589  
Email: [dkeedy@lakecountyfl.gov](mailto:dkeedy@lakecountyfl.gov)
- Amye King, AICP  
Community Liaison Manager/Interim Transit Manager  
Department of Community Services  
Phone: 352.742.6524  
Email: [aking@lakecountyfl.gov](mailto:aking@lakecountyfl.gov)



LAKE COUNTY  

---

FLORIDA