

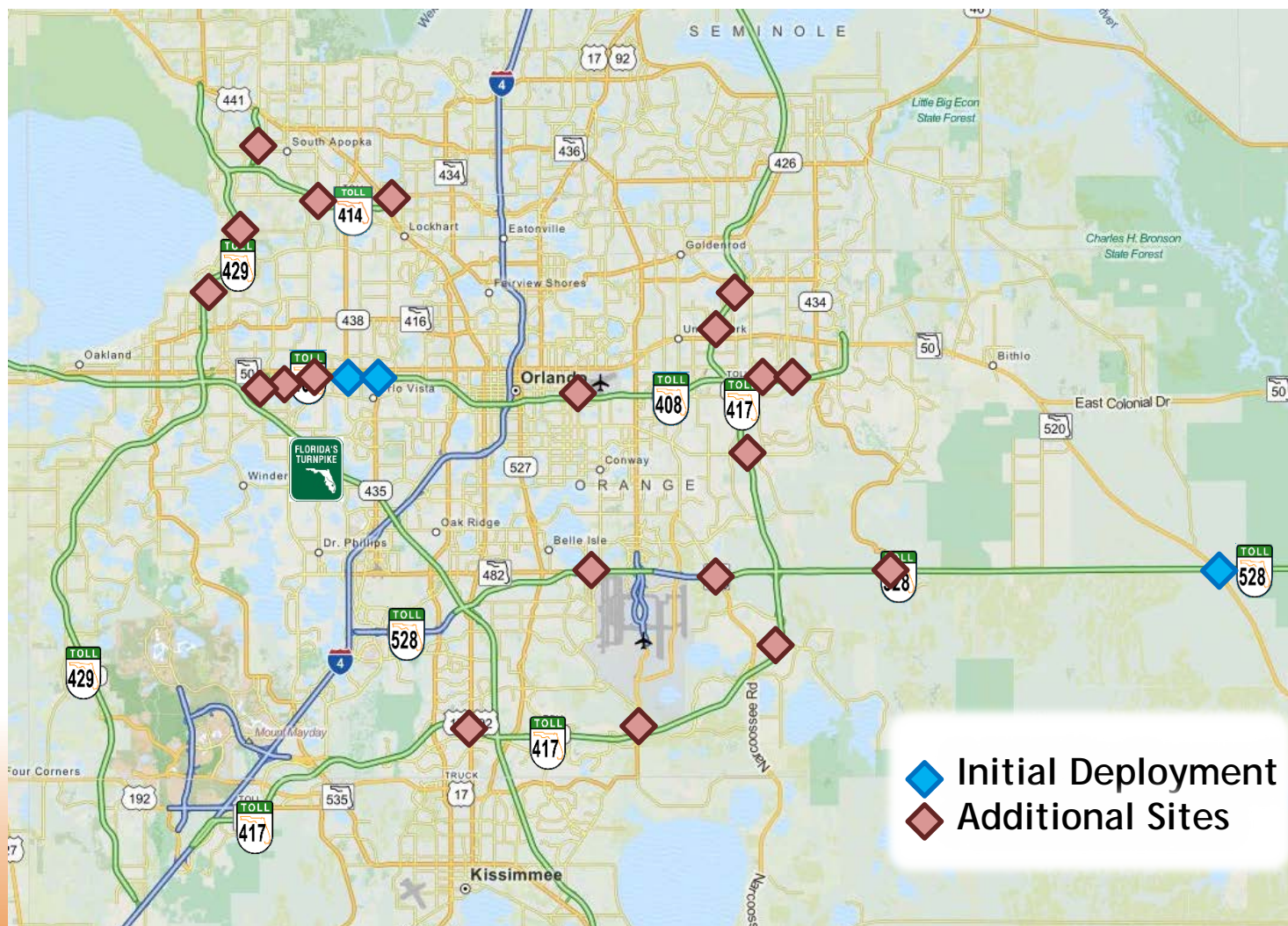
# CENTRAL FLORIDA EXPRESSWAY AUTHORITY

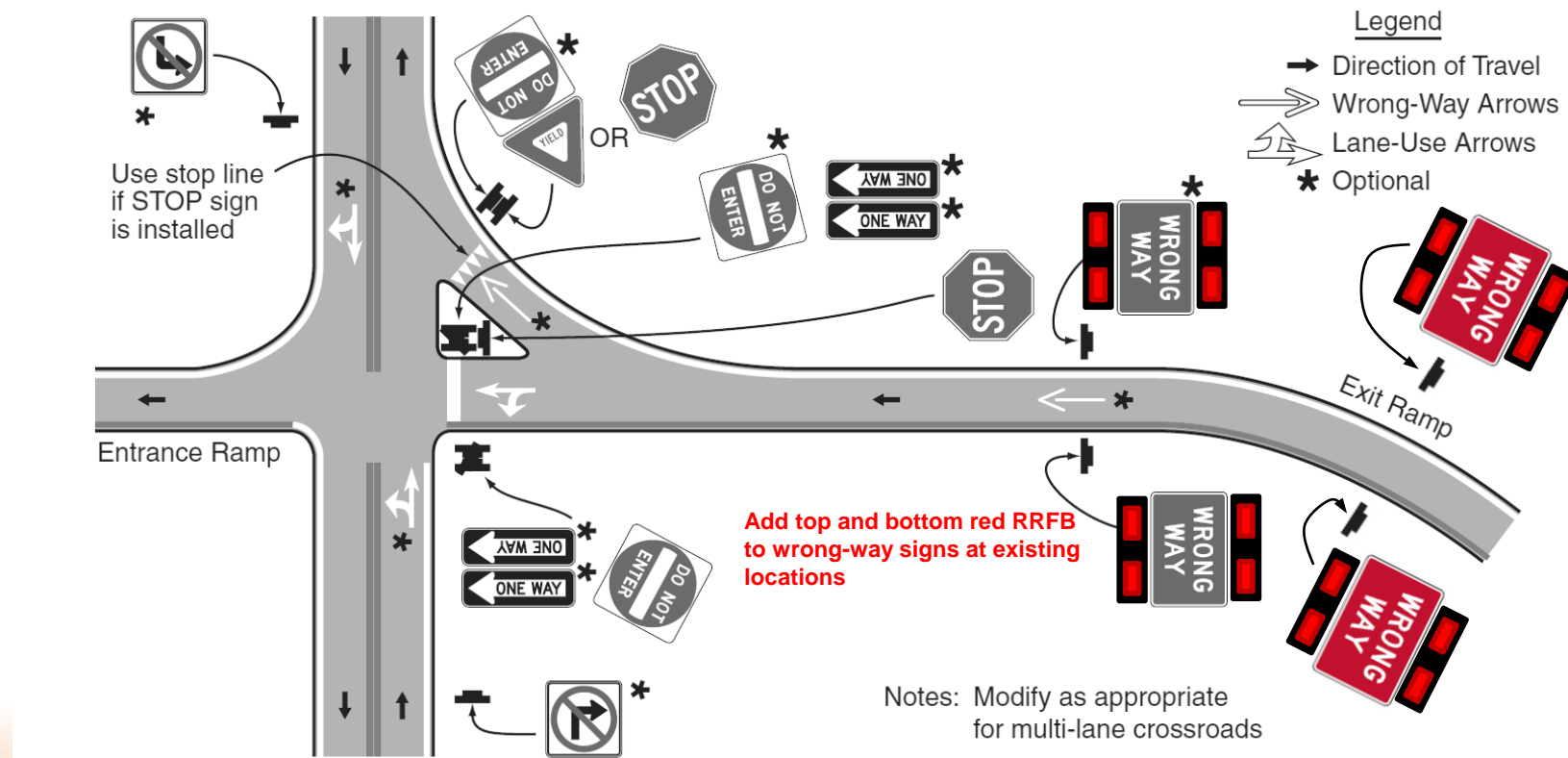
A photograph of a multi-lane highway bridge at dusk. The bridge spans a body of water, and its lights are reflected in the calm surface. The sky is a deep blue, and the overall scene is serene.

UPDATE: Wrong-Way Driving Detection  
System



# WWD DETECTORS



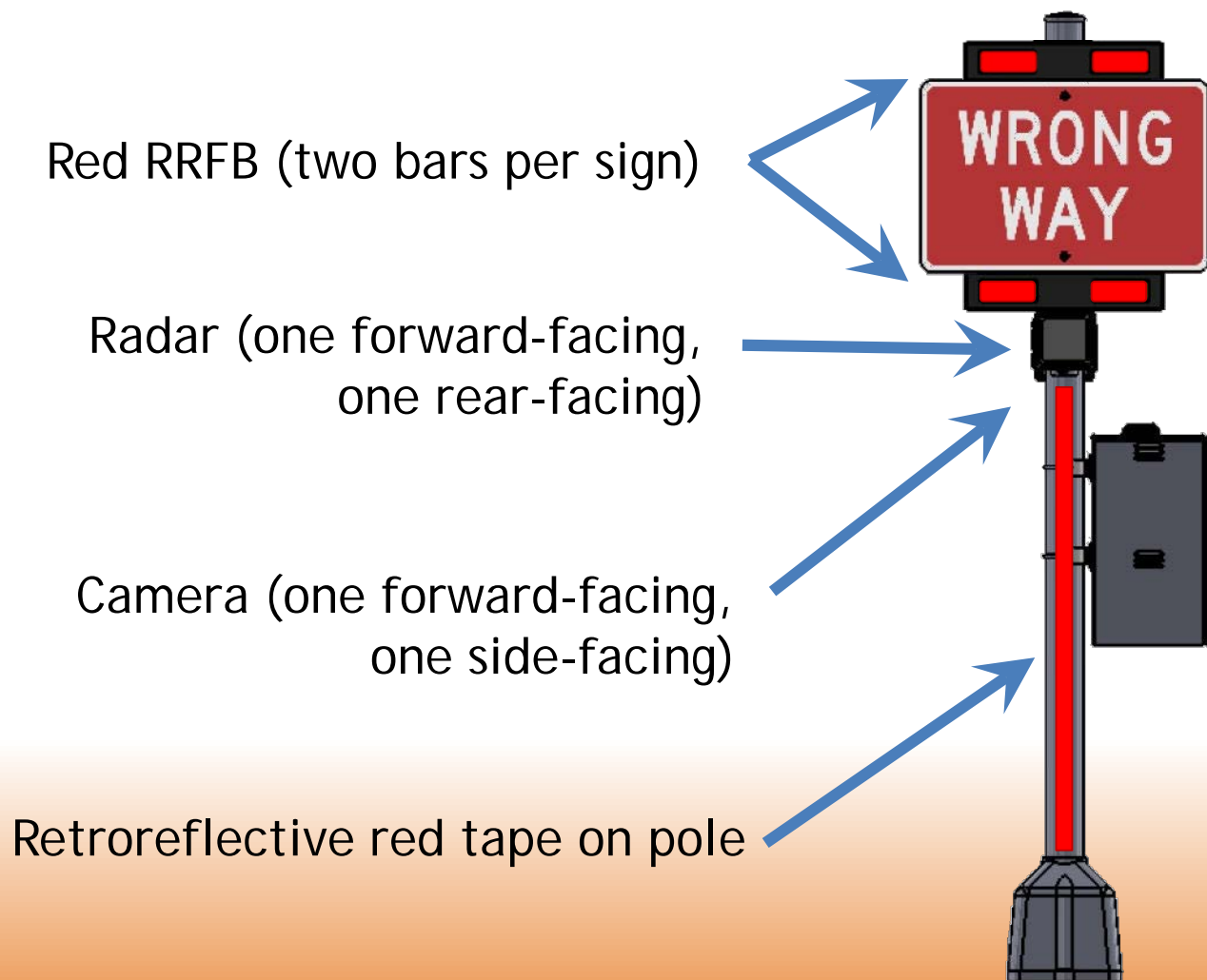


**Add supplemental wrong-way signs and RRFB between existing wrong-way signs and the expressway mainline**





# RAMP DETECTION EQUIPMENT





# SR 408 TESTING





# SIGN EXAMPLES

**WRONG WAY DRIVER  
REPORTED --- USE  
EXTREME CAUTION**

**WRONG WAY  
DRIVER  
REPORTED**



# ACTUAL DETECTION, Example 1



Correct Traffic Flow:



**BlinkLink**

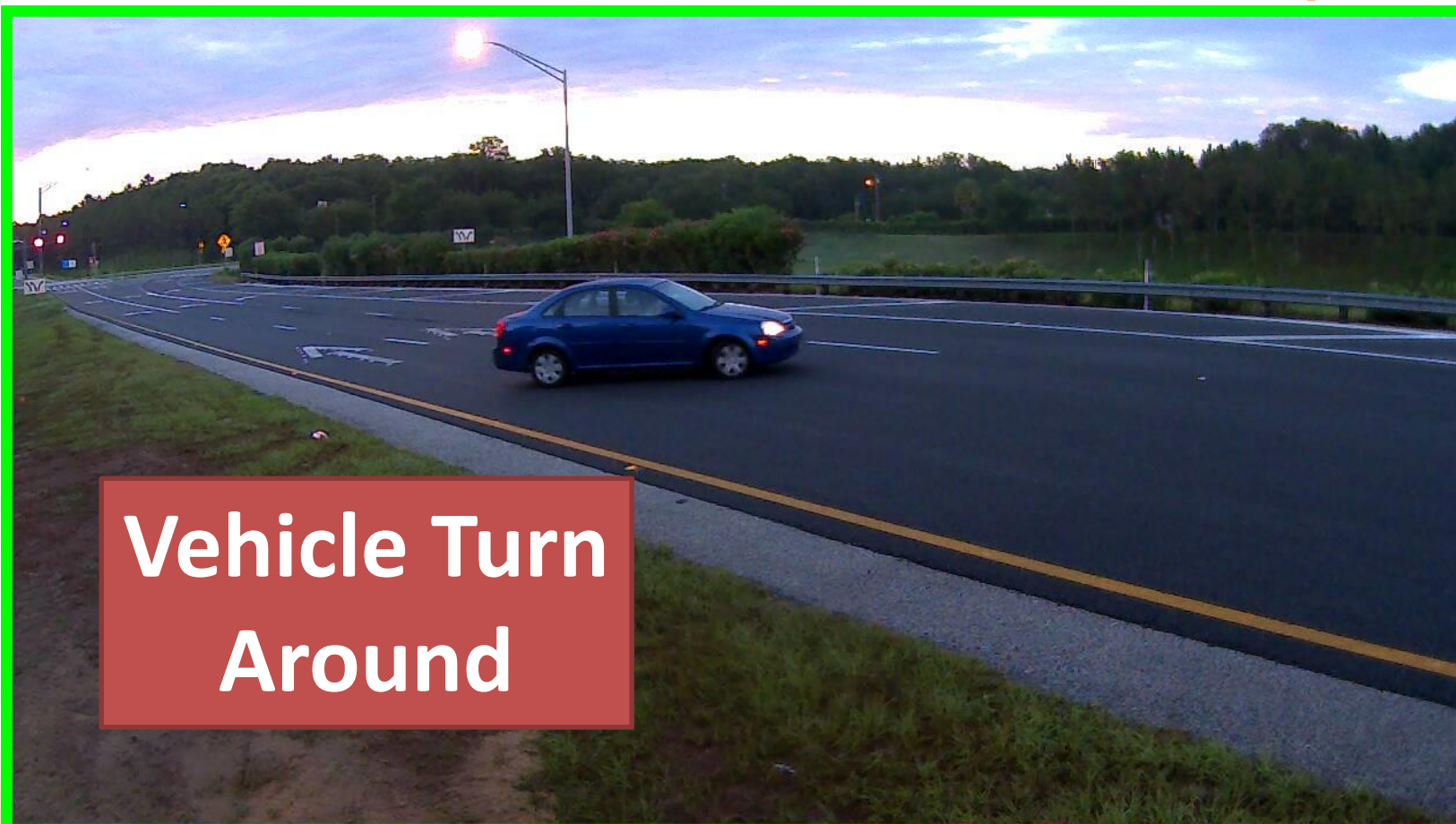
System: SR 408 WB Exit 4 @ Hiawasse Rd Alert Time: 8/16/2015 7:52:08 PM Powered by TAPCO

**CENTRAL FLORIDA EXPRESSWAY AUTHORITY**





# ACTUAL DETECTION, Example 2



**Vehicle Turn  
Around**

Correct Traffic Flow:



**BlinkLink**™

System: SR 408 EB Exit 4 @ Hiwassee Rd Alert Time: 6/24/2015 6:33:58 AM Powered by TAPCO

**CENTRAL FLORIDA EXPRESSWAY AUTHORITY**





# ACTUAL DETECTION, Example 3



Correct Traffic Flow:



**BlinkLink**<sup>™</sup>

System: SR 408 WB Exit 4 @ Hiwassee Rd Alert Time: 9/12/2015 7:10:44 AM Powered by TAPCO

**CENTRAL FLORIDA EXPRESSWAY AUTHORITY**

# »»» Laser testing



- Final 30 day test  
10/16/15
- Sites that have geometric challenges
- Alternative detection method
- Improved accuracy



# ONGOING ACTIVITY

- Posting messages to CFX dynamic message signs for right-way drivers  
22 WWD events February - September 2015
- Deploying additional locations  
19 Radar Design Complete  
7 Laser  
6 Under Construction
- Single Line DMS project