

# CENTRAL FLORIDA EXPRESSWAY AUTHORITY



**SR 408 Eastern Extension PD&E Study**



# WHAT IS A PD&E?

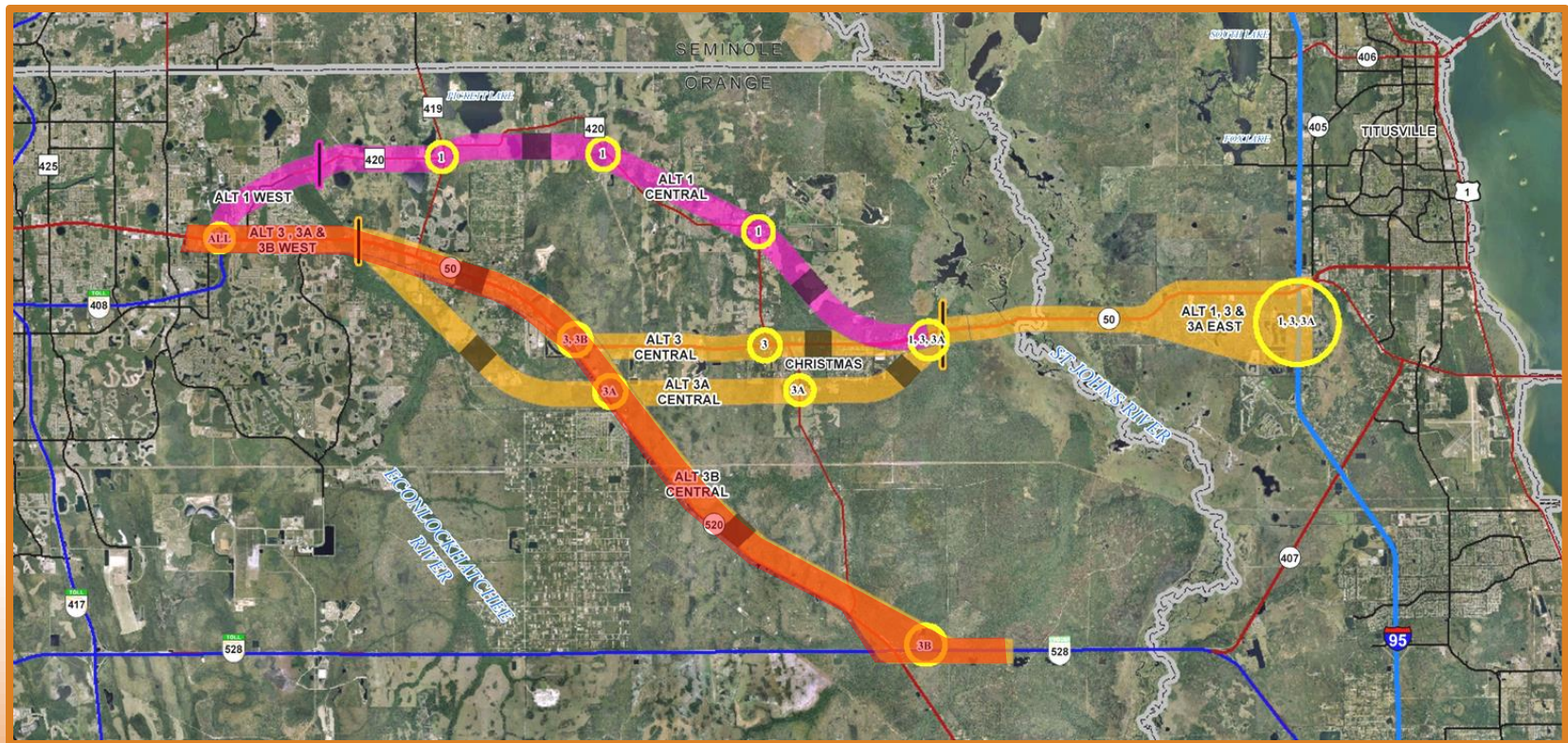






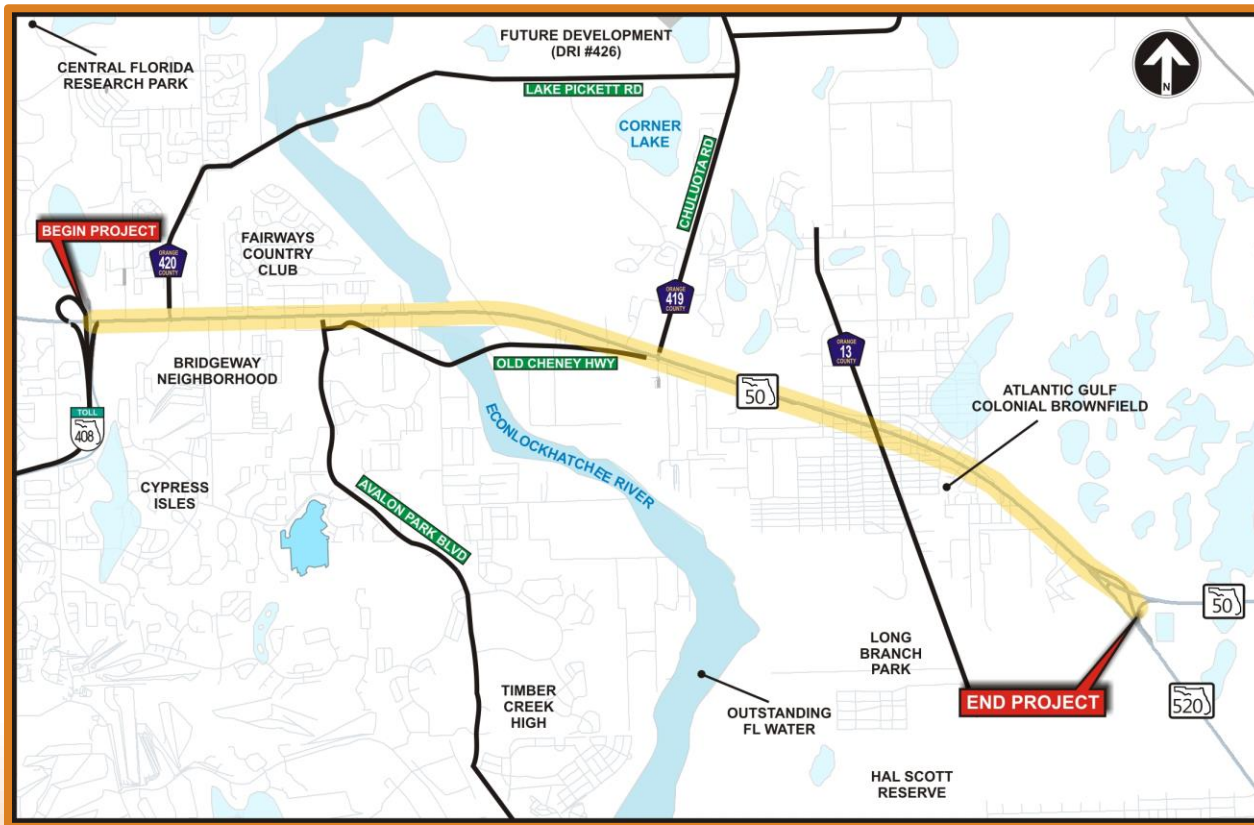
# HISTORY

- Concept Development and Evaluation Study Report completed in 2008
- Corridor 3B (along SR 50) meets the transportation need west of SR 520, providing the greatest relief of traffic congestion along SR 50





# PURPOSE & NEED



Provide additional  
east-west lanes

Provide additional  
emergency  
evacuation service

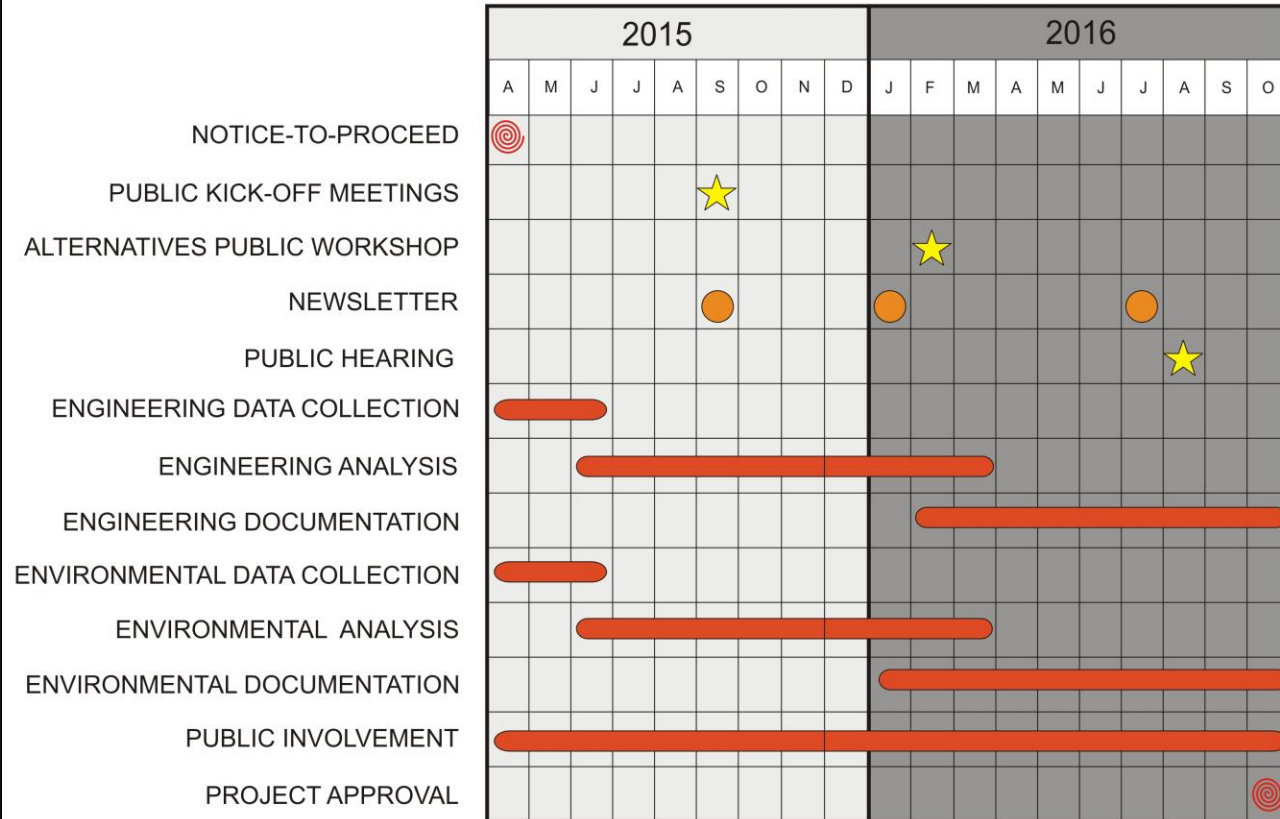
Provide improved  
transportation  
connectivity

Provide transit support



# PROJECT SCHEDULE

## SR 408 East Extension PD&E Study Schedule





## NEXT STEPS

- Orange County Board of County Commissioners Presentation
- Project Advisory Group/Environmental Advisory Group Meetings
- Public Kick-off Meeting