

# **CENTRAL FLORIDA EXPRESSWAY AUTHORITY**

**MINUTES  
CENTRAL FLORIDA EXPRESSWAY AUTHORITY  
BOARD WORKSHOP  
September 10, 2015  
Location: CFX Boardroom**

---

**Board Members Present:**

Commissioner Welton G. Cadwell, Lake County (Chairman)  
Commissioner Brenda Carey, Seminole County (Secretary-Treasurer)  
Commissioner S. Scott Boyd, Orange County (Vice Chairman)  
Mayor Buddy Dyer, City of Orlando  
Andria Herr, Gubernatorial Appointment  
Mayor Teresa Jacobs, Orange County  
Jay Madara, Gubernatorial Appointment

**Board Members Not Present:**

Commissioner Fred Hawkins, Jr., Osceola County  
S. Michael Scheeringa, Gubernatorial Appointment

**Non-Voting Advisor Not Present:**

Diane Gutierrez-Scaccetti, Florida's Turnpike Enterprise

**Staff Present at Dais:**

Laura Kelley, Executive Director  
Joseph L. Passiatore, General Counsel  
Darleen Mazzillo, Recording Secretary/Executive Assistant

**CALL TO ORDER**

The workshop was called to order at 10:45 a.m. by Chairman Welton Cadwell.

**PUBLIC COMMENT**

There were no comments from the public.

**PROJECT POLICY OVERVIEW**

(Presentation attached as Exhibit "A")

---

Chief of Infrastructure Joseph Berenis explained that the purpose of the policies that will be presented today are to implement CFX vision, guide staff decisions on future initiatives/capital programs and to comply with CFX legislation. He also provided an overview of the CFX legislation.

Director of Engineering Glenn Pressimone went into detail about the policy profiles. The framework for the policies was established in 1995. The policy profiles are used by staff as guidelines for future projects.

The policies are organized into the following categories:

- Existing System Improvements
  - Capacity Improvements
  - Existing Interchanges
  - Renewal/Replacement
  - Toll Facilities
- New Projects
  - New Interchanges
  - System Expansions
  - Non-system Expansions
  - Other jurisdictions
- New Markets
  - Multimodal
  - New Services
    - Traveler Information
    - Parking
    - Fiber Optic Cable
    - Advertising

Mr. Pressimone went over each policy profile and asked for the Board's preference for setting the policy levels. The input from the Board will be incorporated in the Draft 2040 Master Plan.

Under the non-system expansions, Commissioner Boyd asked if there is an opportunity for CFX to partner on a new interchange in Southwest Orange County, south of SR 528 (Beachline Expressway) at I-4 to provide relief to Sand Lake Road. Mr. Berenis replied that staff will look into it.

The Board members were comfortable with the policy profiles as presented.

## **CFX SYSTEM NEEDS AND POTENTIAL CAPITAL PROJECTS**

(Presentation attached as Exhibit "B")

Glenn Pressimone gave a presentation which included the following information.

---

### Potential Capital Projects in the 2040 Master Plan

- Five-Year Work Plan Summary (FY 2016 – 2020)
- Existing System Improvements (FY 2020 – 2040)
  - Approximately 60 miles of widening (SR 417, SR 429 and SR 528)
  - 2 interchange improvements
  - SR 408 mobility options
- Existing System Renewal
  - Roadway milling and resurfacing
  - ITS equipment and software
  - Signs
  - Other Infrastructure
- Proposed System Buy
- Candidate Expansion Projects
  - SR 408 Eastern Extension
  - SR 414 Managed Lanes
  - Lake-Orange Connector

### Other Candidate Projects

Orange County Transportation Planning Manager, Renzo Nastasi, gave a presentation that included information on:

- County Metrics
- Focus Areas
- Infrastructure Investments

(Mayor Dyer left the meeting at this time.)

### Task Force Projects/Expansion Projects

Mr. Pressimone reported that the East Central Florida Corridor Task Force has authored their final report. The Task Force recommended 4 new study areas for new or upgraded corridors: two running east-west and 2 running north-south. FDOT is currently preparing to initiate studies of these corridors. Mr. Pressimone showed the corridors on the map. The approximate cost to develop these corridors is between \$3.5B and \$4.5B (in 2015 dollars).

### Osceola County Expressway Authority Master Plan Projects

Osceola County Expressway Authority (OCX) has approximately 60 new expressway miles that will be included in the CFX Master Plan, as dictated by the CFX legislation.

- Osceola Parkway Extension
- Northeast Connector
- Southport Connector
- Poinciana Parkway

Atlee Mercer, Chairman of the Osceola County Expressway Authority, talked about the projects in the Osceola County Expressway Authority's Master Plan. All of the Project Development & Environmental (PD&E) Studies are funded except for the Northeast Corridor.

#### Capital Projects Summary

Mr. Pressimone presented the costs associated with the proposed Master Plan:

#### Estimated Costs (2015 dollars)

Existing System	\$2.0B
Expansion Projects	<u>\$8.6B - \$10.1B</u>
Total Cost Range	\$10.6 B - \$12.1B

CFX Project Capacity                      \$4.65B

#### **ALL ELECTRONIC TOLL COLLECTION**

This item was tabled until the next meeting, due to time constraints.

#### **BOARD MEMBER COMMENT**

- Mr. Madara asked about the date for the Board Retreat in October. Ms. Kelley answered that the scheduled date is October 8, however she has recently learned that there may be a few board members that have scheduling conflicts. CFX staff will work with the Board members to come up with a satisfactory date.
- Regarding the call center wait times, Mr. Madara proposed that we hold the new vendor accountable for holding the wait times to a minimum. He also highlighted the need for a dashboard to be able to monitor issues like this in the future.

#### **ADJOURNMENT**

The Chairman adjourned the meeting at 12:00 p.m.



---

Commissioner Welton G. Cadwell  
Chairman  
Central Florida Expressway Authority



---

Darleen Mazzillo  
Recording Secretary/Executive Assistant  
Central Florida Expressway Authority

Minutes approved on Oct. 8, 2015.

*Pursuant to the Florida Public Records Law and CFX Records Management Policy, audio tapes of all Board and applicable Committee meetings are maintained and available upon request to the Records Management Liaison Officer at [publicrecords@CFXWay.com](mailto:publicrecords@CFXWay.com) or 4974 ORL Tower Road, Orlando, FL 32807. Additionally, video tapes of Board meetings commencing July 25, 2012 are available at the CFX website, [www.expresswayauthority.com](http://www.expresswayauthority.com)*

**AGENDA  
CENTRAL FLORIDA EXPRESSWAY AUTHORITY  
BOARD WORKSHOP  
September 10, 2015**

**Immediately following the conclusion of the 9:00 a.m. Board Meeting**

Meeting Location: CFX Boardroom  
4974 ORL Tower Road, Orlando, FL 32807

**A. CALL TO ORDER**

**B. PUBLIC COMMENT**

Pursuant to Rule 1-1.011, the governing Board for CFX has set aside at least 15 minutes at the beginning of each regular meeting for citizens to speak to the Board on any matter of public interest under the Board's authority and jurisdiction, regardless of whether the public interest is on the Board's agenda, but excluding pending procurement issues. Each speaker shall be limited to 3 minutes.

**C. PROJECT POLICY OVERVIEW – *Joseph Berenis, Chief of Infrastructure and Glenn Pressimone, Director of Engineering***

**D. CFX SYSTEM NEEDS AND POTENTIAL CAPITAL PROJECTS – *Glenn Pressimone, Director of Engineering***

- Current CFX System Expansion/Improvements
- Other Toll Opportunities Within CFX Jurisdictional Boundaries
- Other Regional Tolling Opportunities

**E. ALL ELECTRONIC TOLL COLLECTION – *David Wynne, Director of Toll Operations***

**F. BOARD MEMBER COMMENT**

**G. ADJOURNMENT**

This meeting is open to the public.

Note: Any person who decides to appeal any decision made at this meeting will need record of the proceedings and for that purpose, may need to ensure that a verbatim record of the proceedings is made which includes the testimony and evidence upon which the appeal is to be based, per Florida Statute 286.0105.

## EXHIBIT "A"



# CENTRAL FLORIDA EXPRESSWAY AUTHORITY

## 2040 Master Plan Workshop Project Policy Overview

September 10, 2015



## »» Purpose of Policies

- Implement CFX Vision
- Guide staff decisions on future initiatives and capital programs
- Comply with CFX Legislation

## »» CFX Legislation

- Construct, improve, maintain, operate Expressway System
- Construct extensions, additions to the system, including roads, bridges, rapid transit, trams, fixed guideways
- Multimodal / Intermodal Projects
  - Within expressway right of way
  - Will improve level of service on the expressway system

## Policy Categories

- Existing System Improvements
- New Projects
- New Markets

## Existing System Improvements

- Capacity Improvements
- Existing Interchanges
- Renewal / Replacement
- Toll Facilities

## New Projects

- New Interchanges
- System Expansions
- Non-system Expansions
- Other Jurisdictions

## New Markets

- Multimodal
- New Services
  - Traveler information
  - Parking
  - Fiber optic cable
  - Advertising



# Policy Profile

Range of Policy Options

All Proposed	All Proposed	All Proposed	Reduce Average Delay	All Proposed	All Proposed	All Proposed	All Proposed	All Proposed	Explore Other Transport Related Markets
Costs Equal User Benefits	Costs Equal User Benefits	Exceed 90 on FDOT MRP Score	Costs Equal User Benefits	Costs Equal User Benefits	Costs Equal User Benefits	Costs Equal User Benefits	Costs Equal User Benefits	Costs Equal User Benefits	Focus on Emerging Markets/ Technology
Costs Equal Revenue	Costs Equal Revenue	Upgrade to reflect changes in Design Standards	Costs Equal Revenue	Costs Equal Revenue	50% Coverage	50% Coverage	50% Coverage	50% Coverage	Expand Current Services
		Meet Minimum MRP Standards	Positive Return on Investment	No Participation		No Participation	No Participation	No Participation	Maintain Current Services
CAPACITY IMPROVEMENTS	EXISTING INTERCHANGES	RENEWAL / REPLACEMENT	TOLL FACILITIES	NEW INTERCHANGES	SYSTEM EXPANSION	NON-SYSTEM EXPANSION	OTHER JURISDICTIONS	MULTIMODAL	NEW SERVICES
Existing System Improvements				New Projects				New Markets	

CENTRAL FLORIDA EXPRESSWAY AUTHORITY

Slide #8

# Policy Profile

Public Purpose	All Proposed	All Proposed	All Proposed	Reduce Average Delay	All Proposed	All Proposed	All Proposed	All Proposed	All Proposed	Explore Other Transport Related Markets
	Costs Equal User Benefits	Costs Equal User Benefits	Exceed 90 on FDOT MRP Score	Costs Equal User Benefits	Costs Equal User Benefits	Costs Equal User Benefits	Costs Equal User Benefits	Costs Equal User Benefits	Costs Equal User Benefits	
Range of Policy Options						50% Coverage	50% Coverage	50% Coverage	50% Coverage	Focus on Emerging Markets/ Technology
	Costs Equal Revenue	Costs Equal Revenue	Upgrade to reflect changes in Design Standards	Costs Equal Revenue	Costs Equal Revenue	Costs Equal Revenue	Costs Equal Revenue	Costs Equal Revenue	Costs Equal Revenue	Expand Current Services
Business Purpose			Meet Minimum MRP Standards	Positive Return on Investment	No Participation		No Participation	No Participation	No Participation	Maintain Current Services
<div> <div>CAPACITY IMPROVEMENTS</div> <div>EXISTING INTERCHANGES</div> <div>RENEWAL / REPLACEMENT</div> <div>TOLL FACILITIES</div> </div> <div>Existing System Improvements</div> <div> <div>NEW INTERCHANGES</div> <div>SYSTEM EXPANSION</div> <div>NON-SYSTEM EXPANSION</div> <div>OTHER JURISDICTIONS</div> </div> <div>New Projects</div> <div> <div>MULTIMODAL</div> <div>NEW SERVICES</div> </div> <div>New Markets</div>										

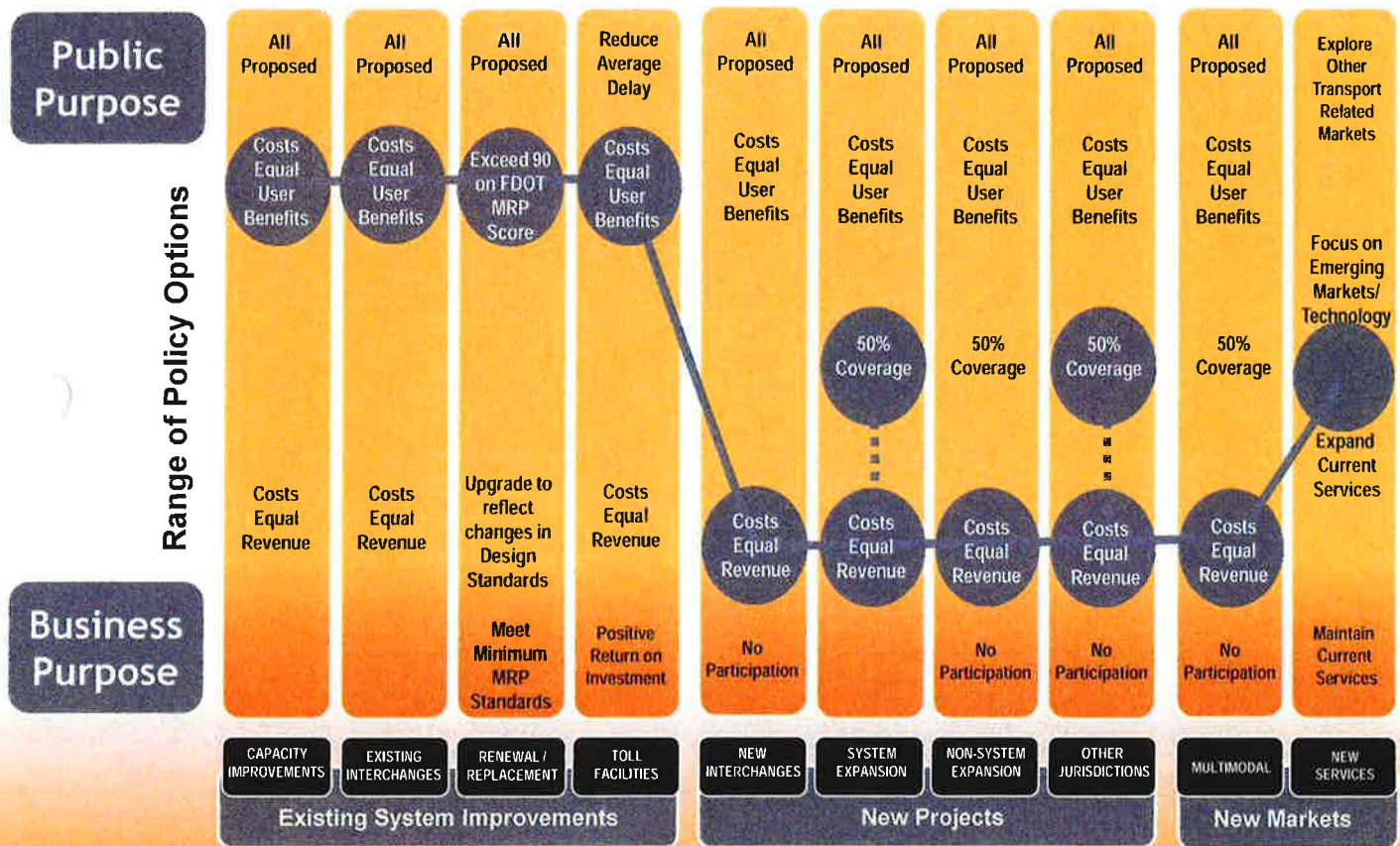
CENTRAL FLORIDA EXPRESSWAY AUTHORITY

Slide #9





## Current Policy Profile



CENTRAL FLORIDA EXPRESSWAY AUTHORITY

Slide #10

## Existing System Improvements

Public  
Purpose

Reduce  
Average  
Delay

Costs  
Equal  
User  
Benefits

### Capacity Improvements

- Policy - Invest in projects that will generate user benefits that equal or exceed project costs

Business  
Purpose

Costs  
Equal  
Revenue

CAPACITY  
IMPROVEMENTS

## Existing System Improvements

Public  
Purpose

Reduce  
Average  
Delay

Costs  
Equal  
User  
Benefits

### Existing Interchanges

- Policy - Invest in projects that will generate user benefits that equal or exceed project costs

Business  
Purpose

Costs  
Equal  
Revenue

EXISTING  
INTERCHANGES



## Existing System Improvements

Public  
Purpose

All  
Proposed

Exceed 90  
on FDOT  
MRP  
Score

Upgrade to  
reflect  
changes in  
Design  
Standards

Business  
Purpose

Meet  
Minimum  
MRP  
Standards

RENEWAL /  
REPLACEMENT

### Renewal / Replacement

- Policy - Maintain the roadway condition at a Maintenance Rating Program (MRP) of 90 or better

## Existing System Improvements

Public  
Purpose

Reduce  
Average  
Delay

Costs  
Equal  
User  
Benefits

### Toll Facilities and Equipment

- Policy - Invest in projects that will generate user benefits that equal or exceed project costs

Business  
Purpose

Costs  
Equal  
Revenue

Positive  
Return on  
Investment

TOLL  
FACILITIES

## »»» New Projects

### New Interchanges

- Policy - Invest in projects that will generate new system revenue in excess of project costs

Public  
Purpose

All  
Proposed

Costs  
Equal  
User  
Benefits

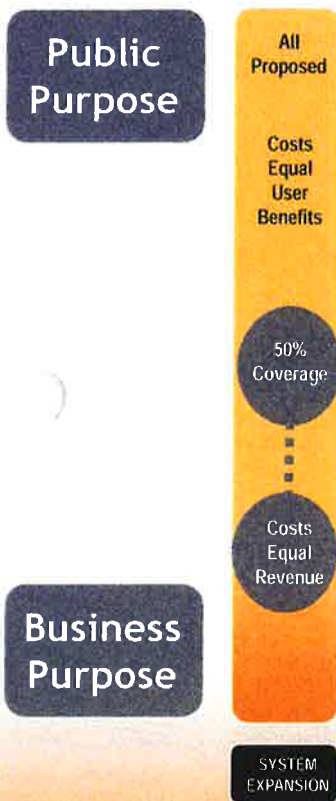
Costs  
Equal  
Revenue

No  
Participation

Business  
Purpose

NEW  
INTERCHANGES

## »»» New Projects



### System Expansion

- Policy - Invest in projects that will generate new system revenue in excess of project costs
- Consider partnerships; pledge up to 50% of project costs



## »»» New Projects

Public  
Purpose

All  
Proposed

Costs  
Equal  
User  
Benefits

50%  
Coverage

Costs  
Equal  
Revenue

No  
Participation

NON-SYSTEM  
EXPANSION

### Non-System Expansion

- Policy - Invest in projects that will generate new revenue in excess of project costs
- Must comply with Master Bond Resolution

Business  
Purpose



## »»» New Projects

### Other Jurisdictions

- Policy - Invest in projects that will generate new system revenue in excess of project costs
- Consider partnerships; pledge up to 50% of project costs

Public  
Purpose

All  
Proposed

Costs  
Equal  
User  
Benefits

50%  
Coverage

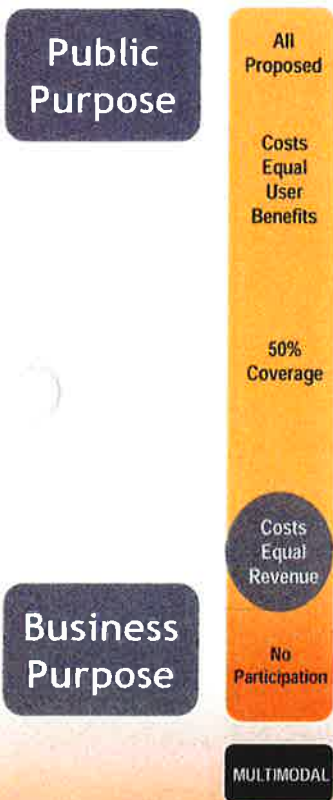
Costs  
Equal  
Revenue

No  
Participation

Business  
Purpose

OTHER  
JURISDICTIONS

## »» New Markets



### Multimodal

- Policy - Provide funding for multimodal projects up to the amount of incremental revenues
- Must comply with Master Bond Resolution

## »» New Markets

### Public Purpose

Explore Other Transport Related Markets

Focus on Emerging Markets/ Technology

Expand Current Services

### Business Purpose

Maintain Current Services

NEW SERVICES

## New Services

- Policy - Seek opportunities to expand into new markets compatible with ITS services
- Must comply with Master Bond Resolution

## EXHIBIT "B"



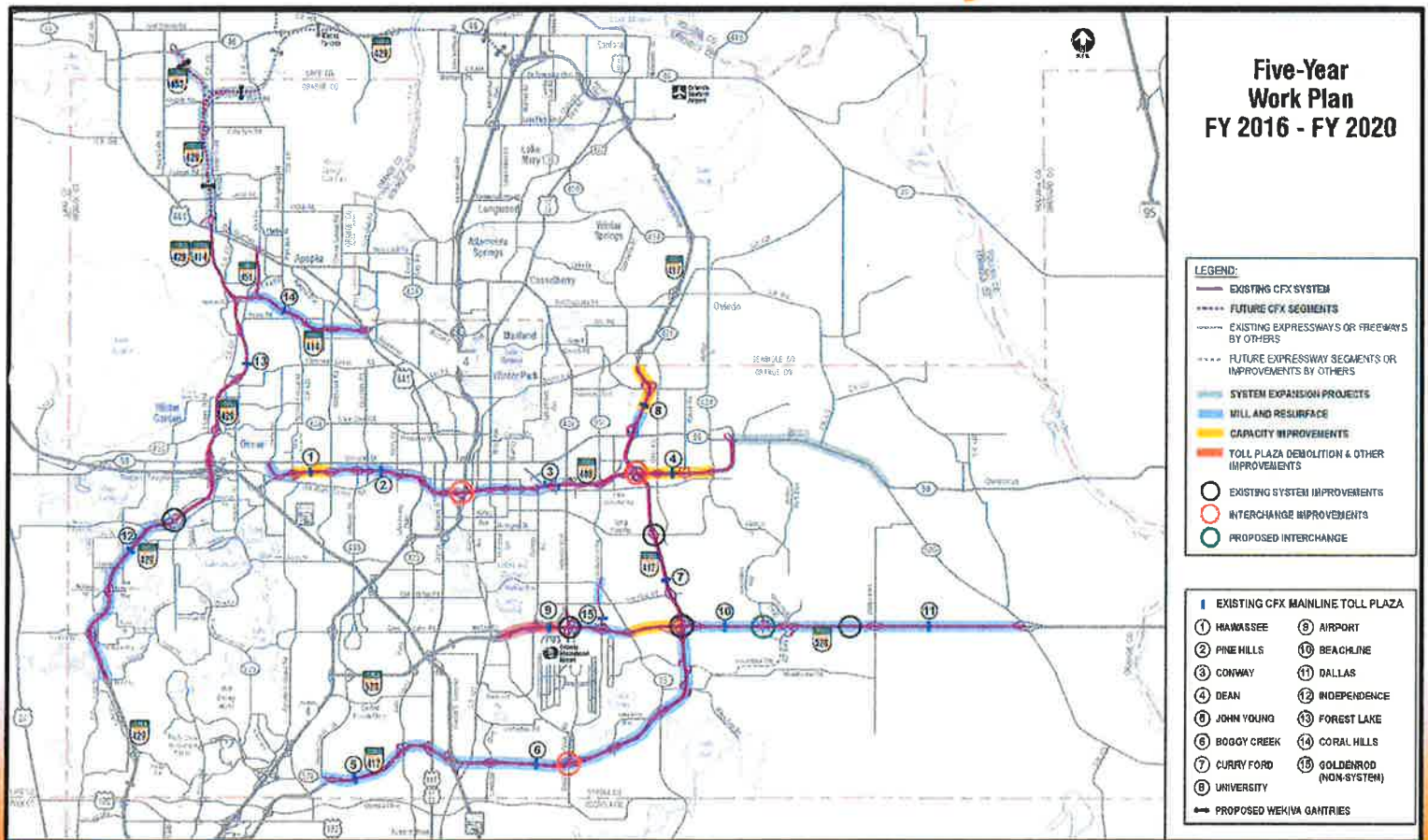


# CENTRAL FLORIDA EXPRESSWAY AUTHORITY

## 2040 Master Plan Workshop Potential Capital Projects

September 10, 2015

# Work Plan Summary (FY 16 - 20)



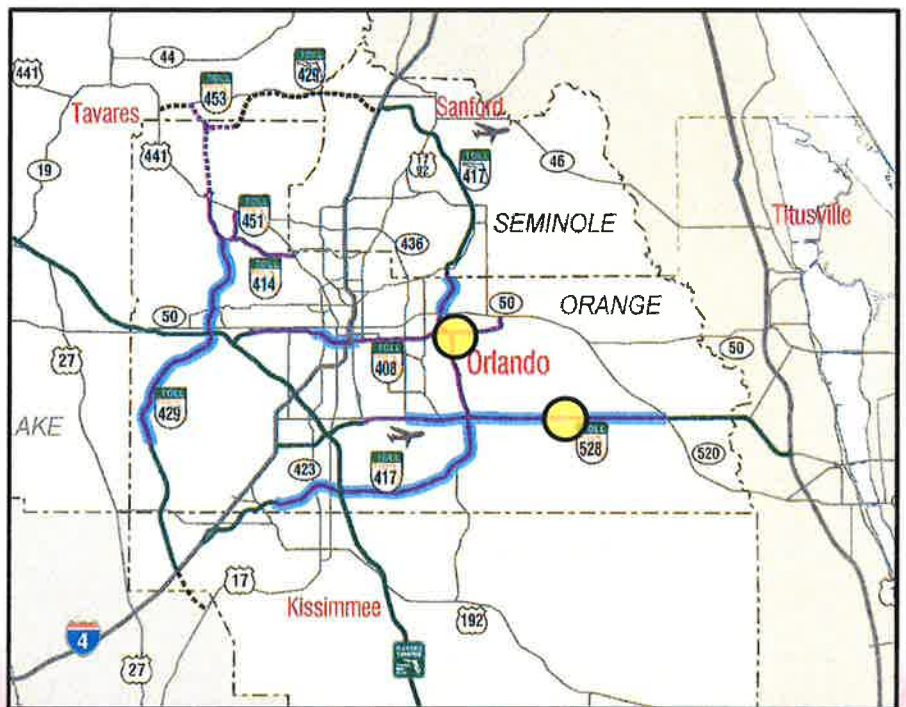
CENTRAL FLORIDA EXPRESSWAY AUTHORITY

Slide #2



## Existing System Improvements (FY 2020 - 2040)

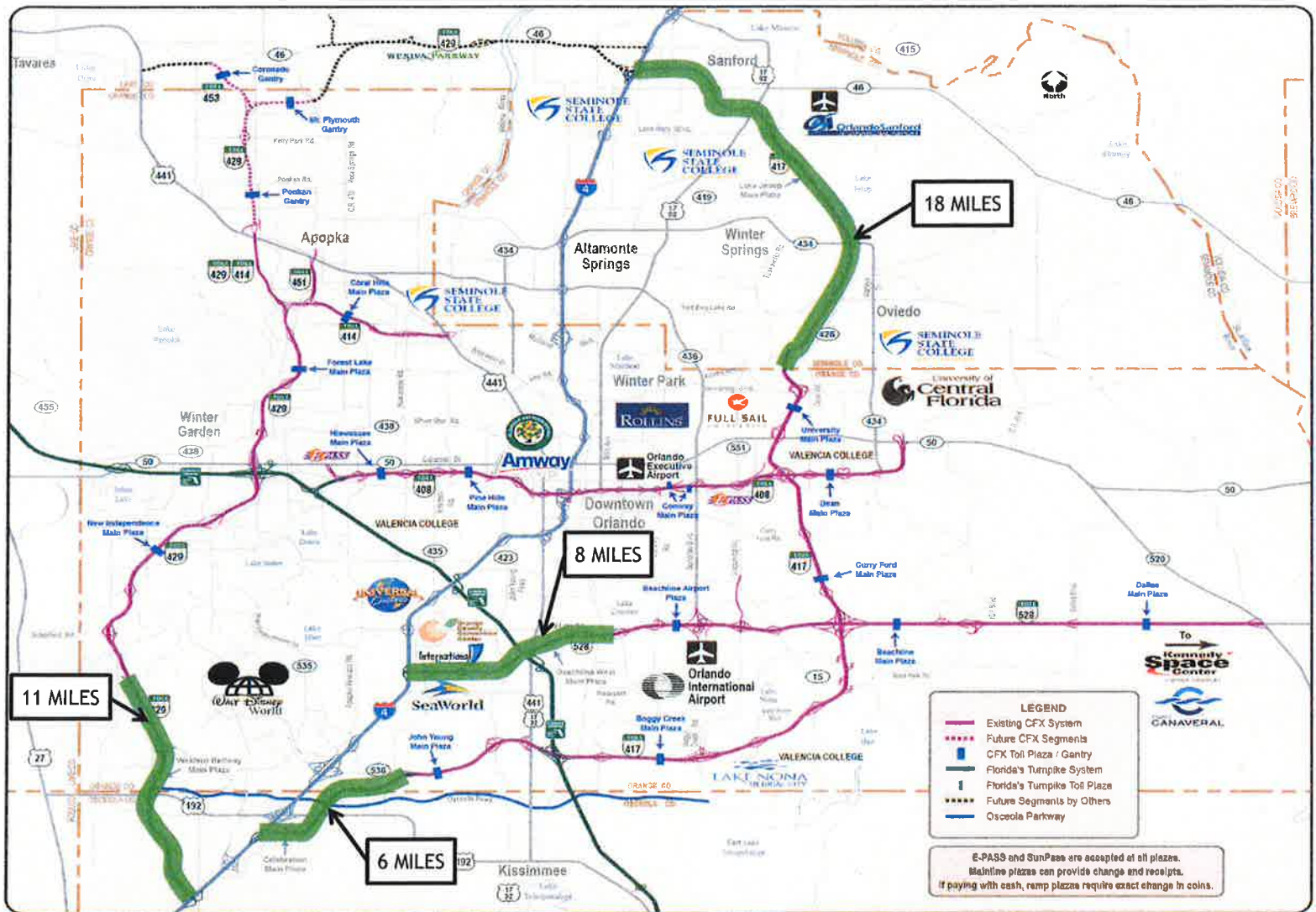
- Approximately 60 miles of widening
  - SR 417
  - SR 429
  - SR 528
- 2 interchange improvements
- SR 408 mobility options



## »» Existing System Renewal

- Roadway milling and resurfacing
- ITS equipment and software
- Signs
- Other infrastructure

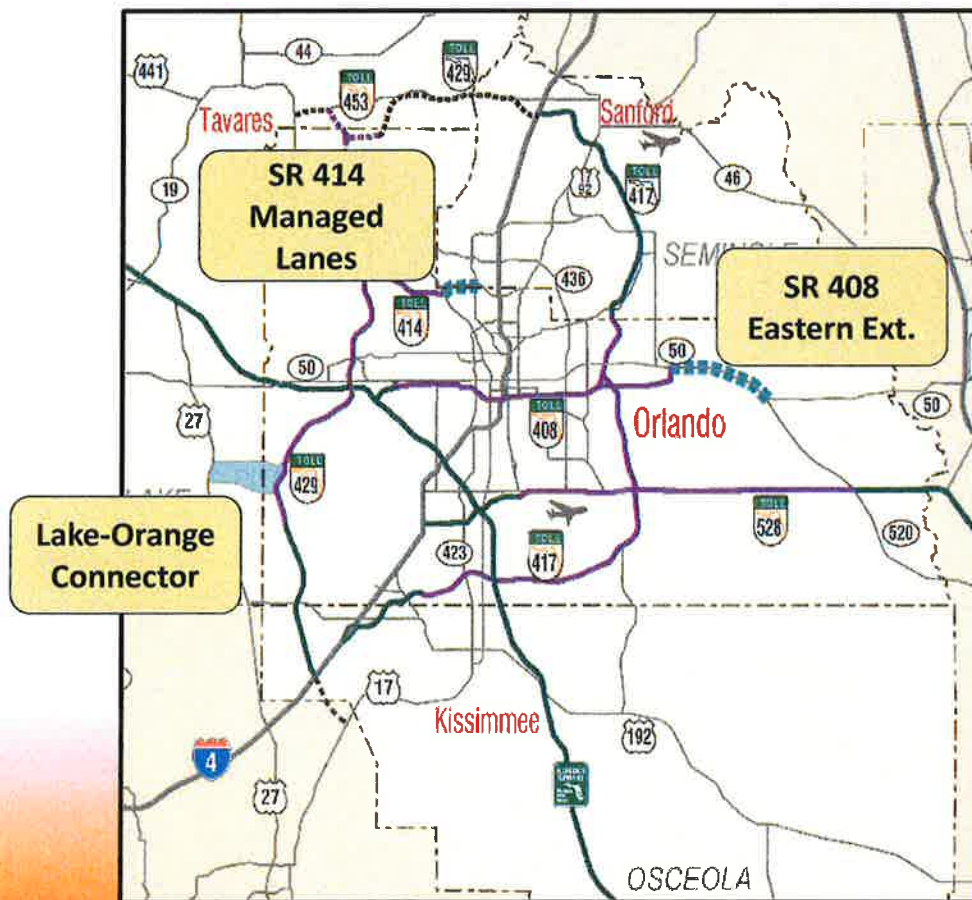




## CENTRAL FLORIDA EXPRESSWAY AUTHORITY

Slide #5

## Candidate Expansion Projects

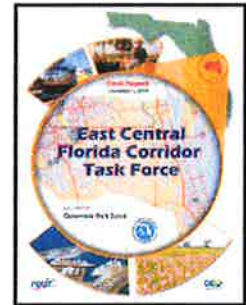


CENTRAL FLORIDA EXPRESSWAY AUTHORITY

Slide #6

## »»» Other Candidate Projects

- Inter-Agency Coordination
- Community Outreach



CENTRAL FLORIDA EXPRESSWAY AUTHORITY

Slide #7



***Orange County***

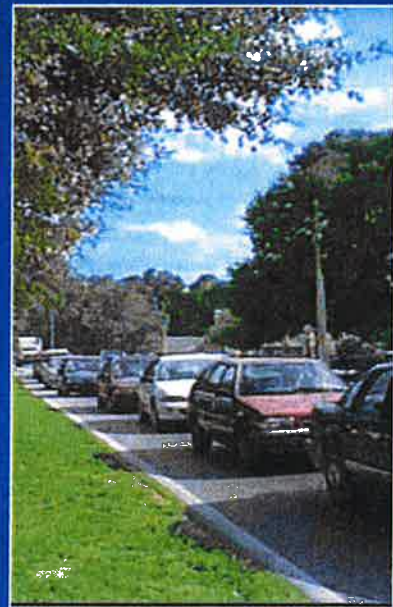
# **CFX Presentation**

**September 10 2015**



# CFX Presentation Outline

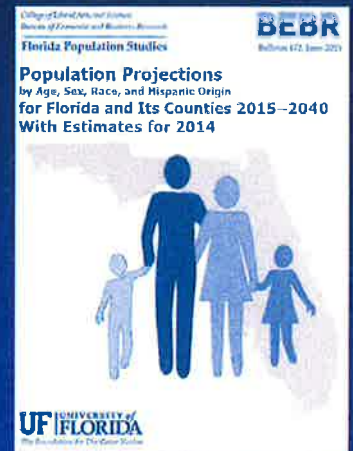
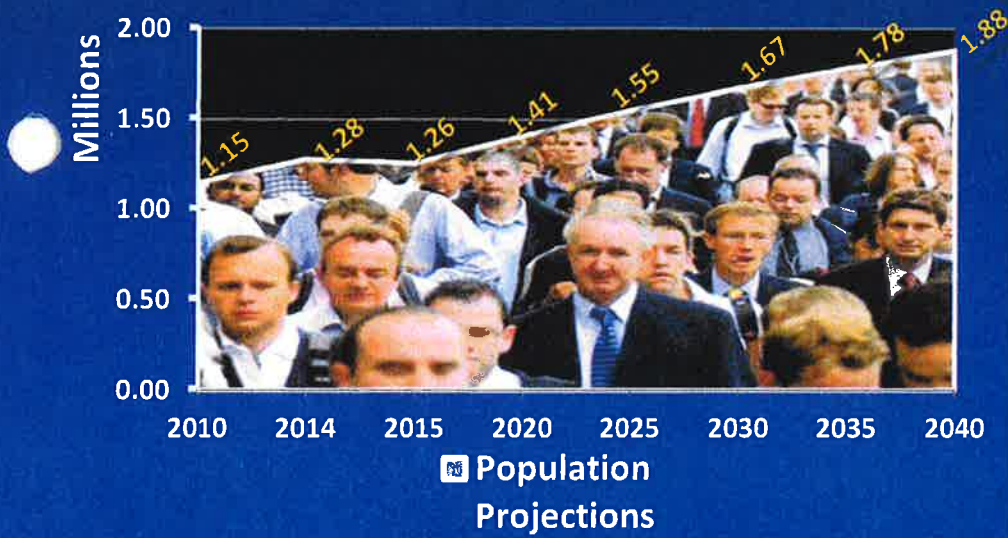
- County Metrics
- Focus Areas
- Infrastructure Investments





# County Metrics

## ■ Orange County







# County Metrics

## ■ Census Data

- Total Employment in 2013: 640,229
- Persons/Square Mile in 2010: 1,269
- Land Area in Square Miles in 2010: 903.43

## ■ Countywide Building Permits

### – 1994-2014

- 210,790 Housing Units
- 131,309 Commercial Buildings



# CFX Presentation Outline

- County Metrics
- Focus Areas
- Infrastructure Investments
- Recommendations





# Focus Areas

## Commuter Patterns

VOLUSIA

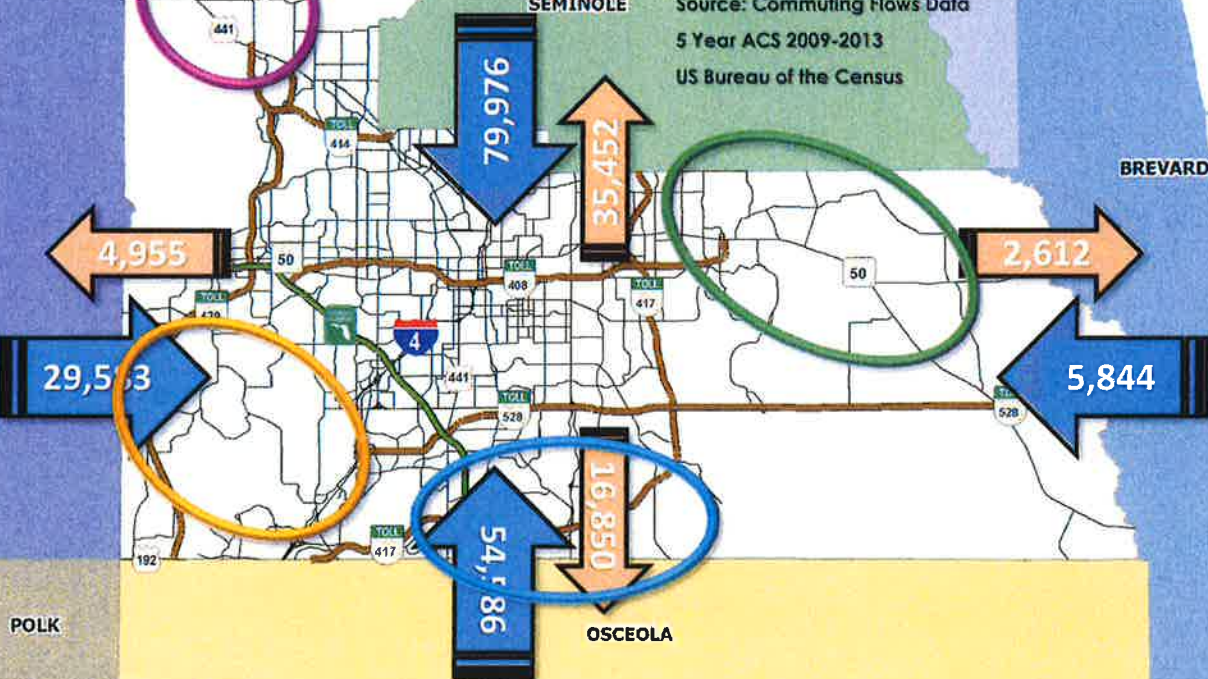
Source: Commuting Flows Data  
5 Year ACS 2009-2013  
US Bureau of the Census

Water

BREVARD

SEMINOLE

LAKE







# Focus Areas – East OC



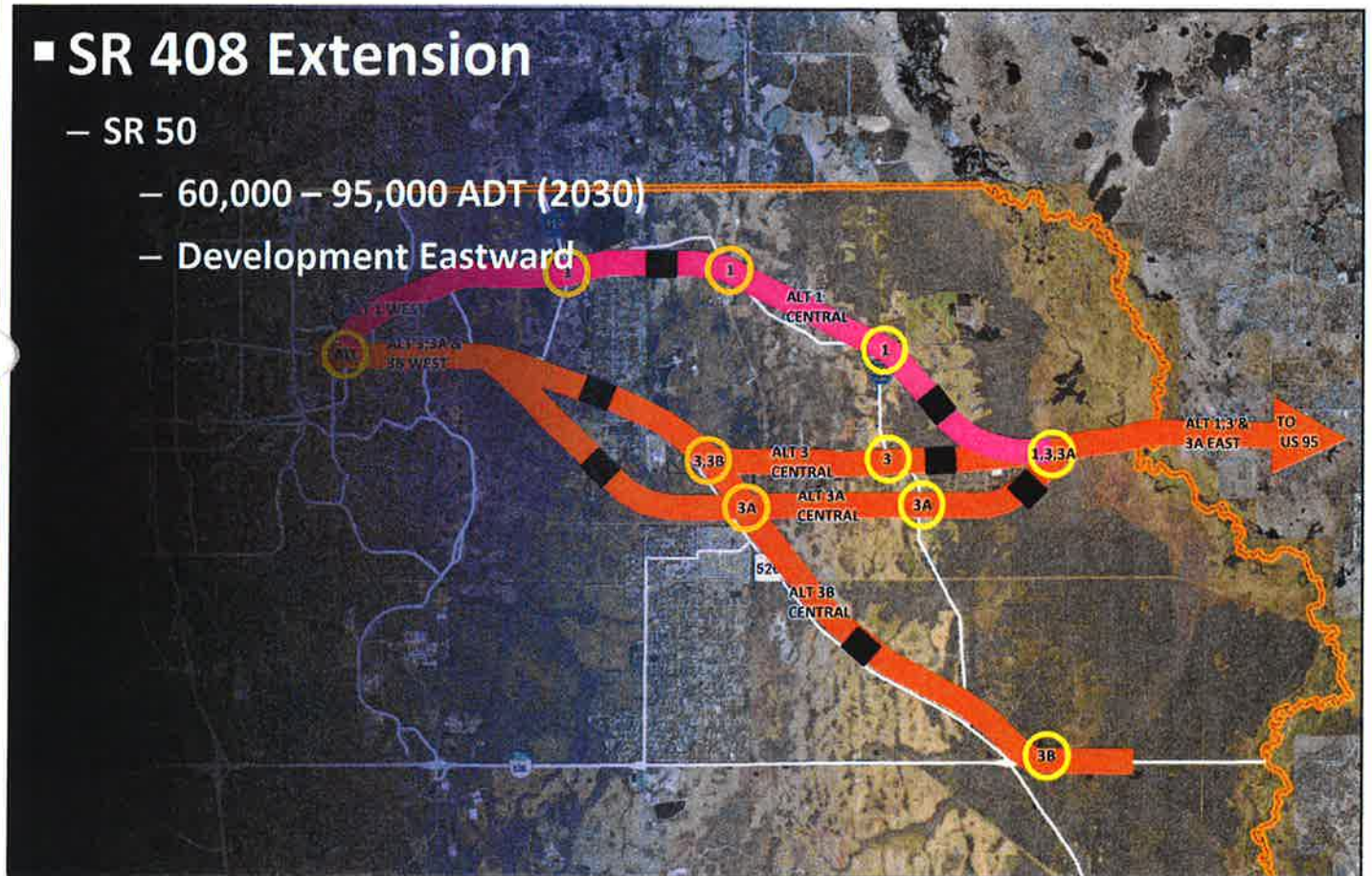




## Focus Areas – East OC

### ■ SR 408 Extension

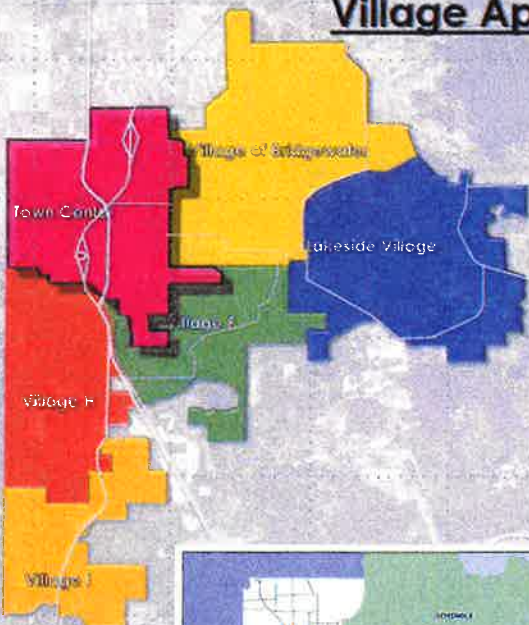
- SR 50
- 60,000 – 95,000 ADT (2030)
- Development Eastward





## Focus Areas – West OC

### Village Approvals:



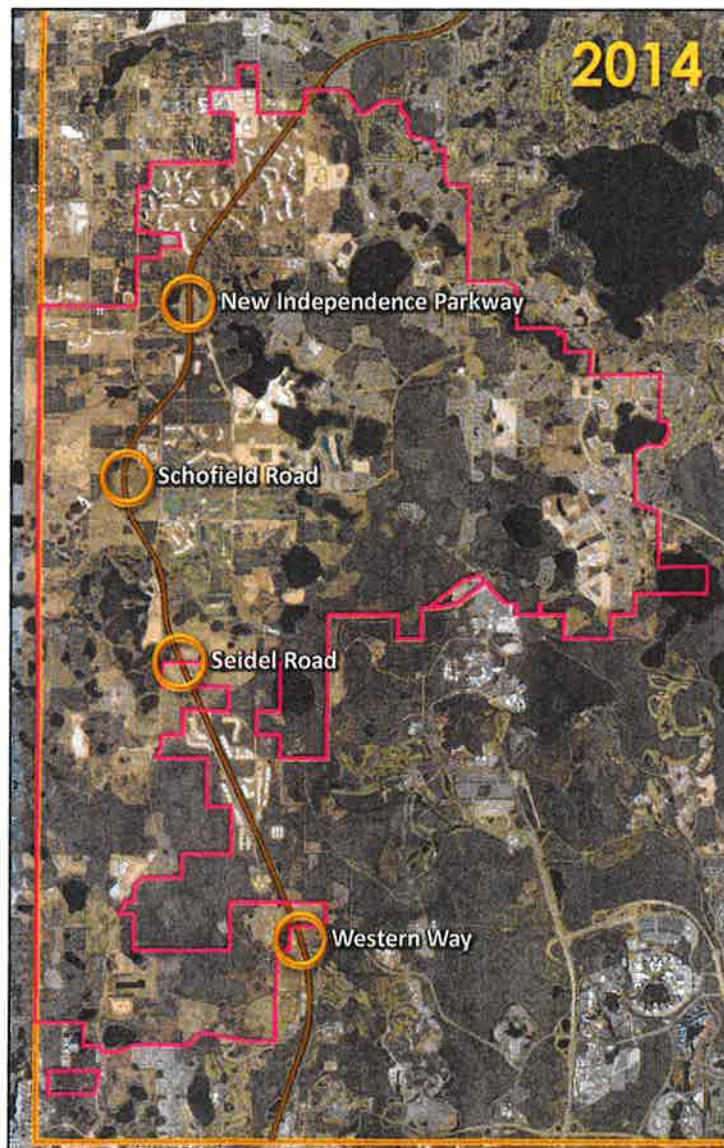
- **Horizon West**
  - 23,000 Acres
  - 5 Villages & 1 Town Center
  - Dwelling Units
    - 40,282 Approved
    - 13,914 Built
  - Nonresidential
    - 10,194,744 SF Approved
    - 201,469 SF Built





## Focus Areas West OC

- 1971
  - No Disney or SR 429
- 2001
  - Disney Open, no SR 429 & 1980's Citrus Freezes
- 2006
  - SR 429 Open
  - Western Way, Schofield Road, Seidel Road, New Independence Parkway Interchanges Open

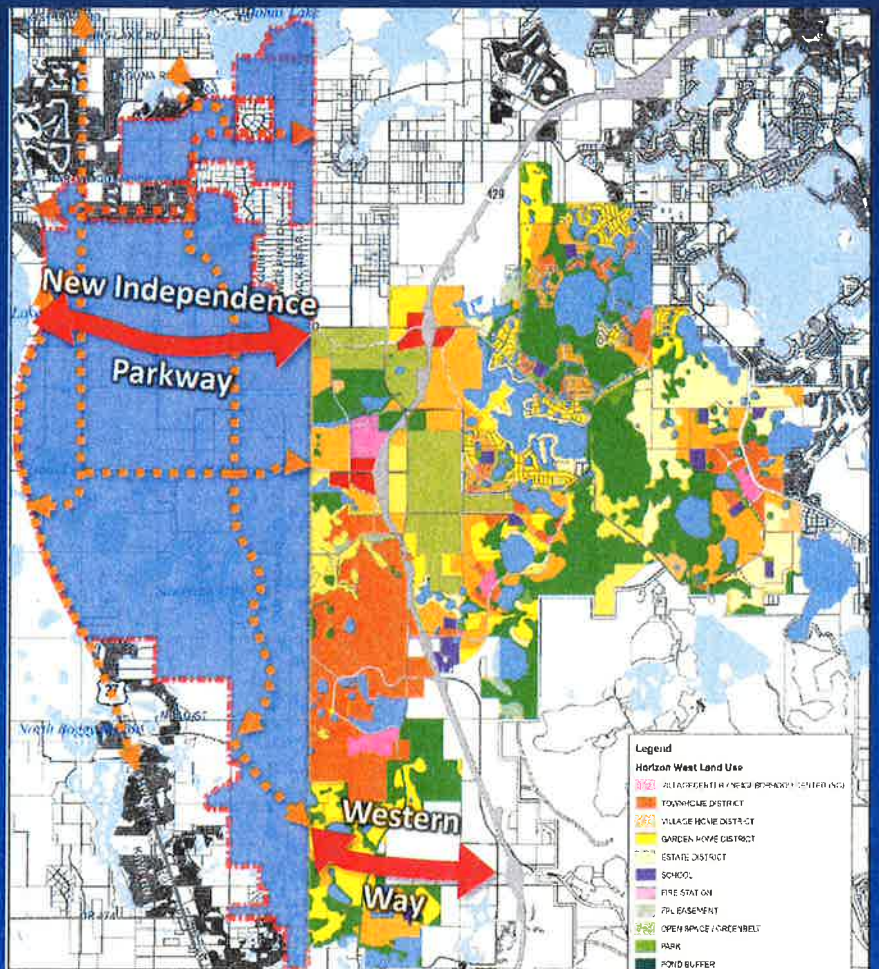






## Focus Area – West OC

- **Wellness Way**
  - 15,000 Acres
  - Land Uses
  - Transportation Network
  - Build Out
    - 26,000 Jobs
    - 16,252 DU
- **Western Way**
  - Reedy Creek/Disney



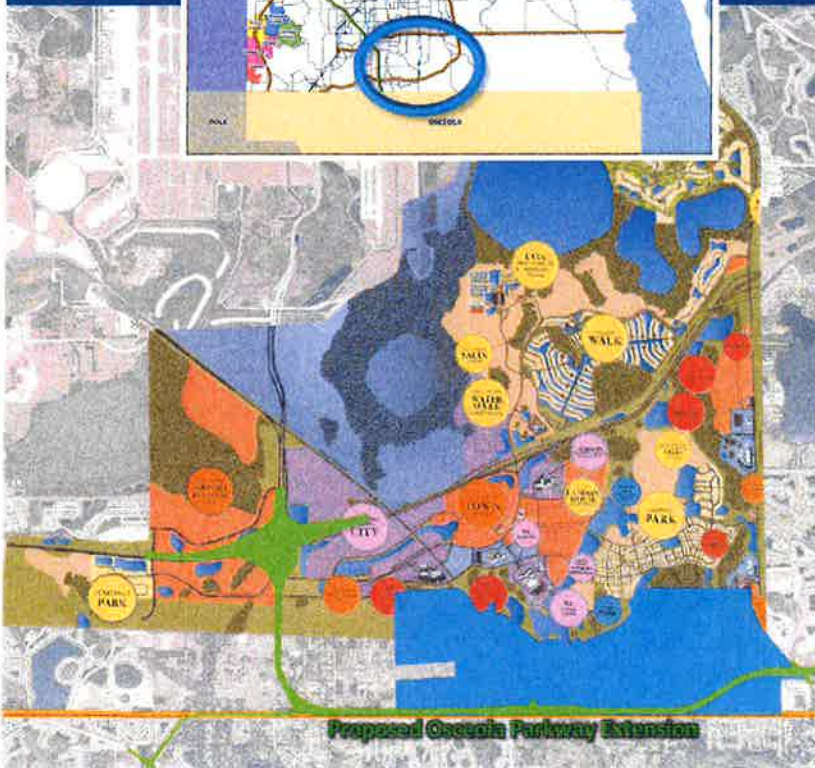




## Focus Areas – South OC



- OIA - 37M Passengers/Yr
- Medical City (650 ac)
- Eagle Creek
- Meadwoods
- Innovation Way
  - SR 528 Interchange
- Lake Nona
- North Ranch Sector Plan
  - Boggy Creek Road
  - Osceola Parkway Extension







## Focus Areas – South OC









# Infrastructure Investments

- \$50-\$55 Million Average Annual CIP
- \$200 Million Invest Program
- Renewed Focus on Safety
- Approximately \$500 Million over five years\*

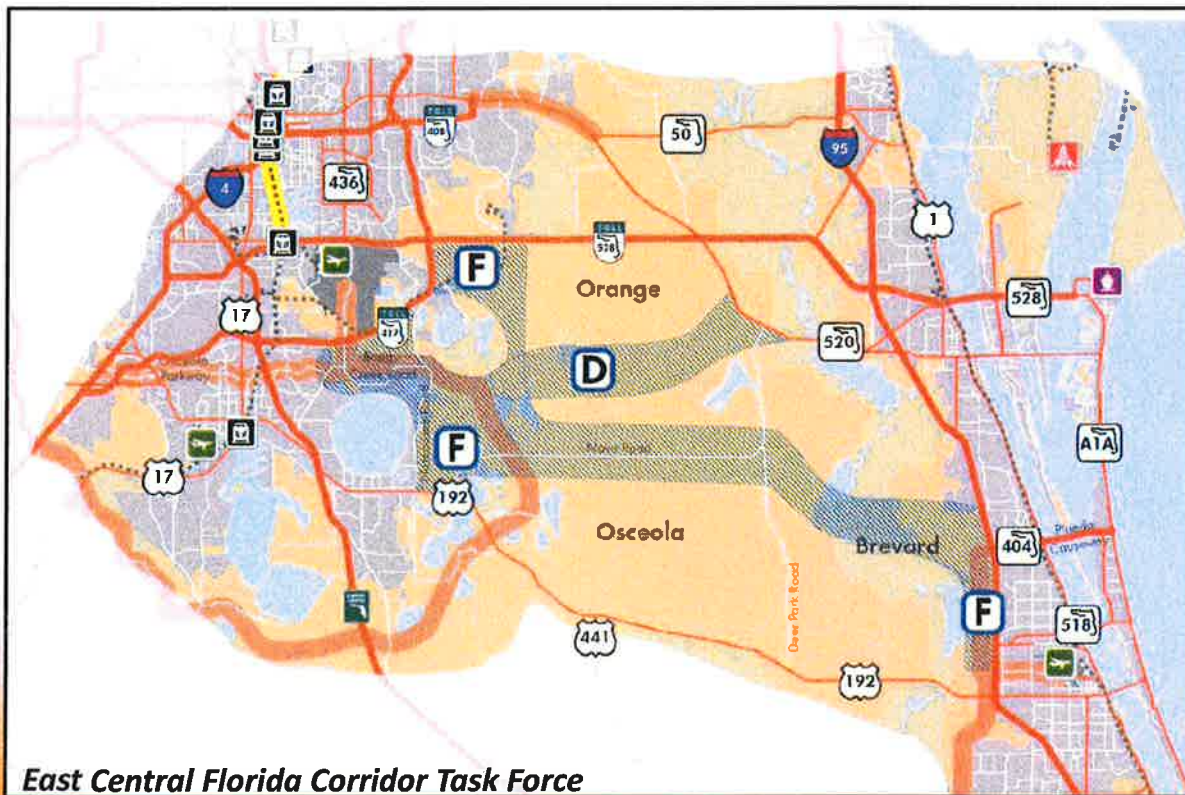
\* Does not include public/private partnerships





# Task Force Projects

## New East-West Corridors



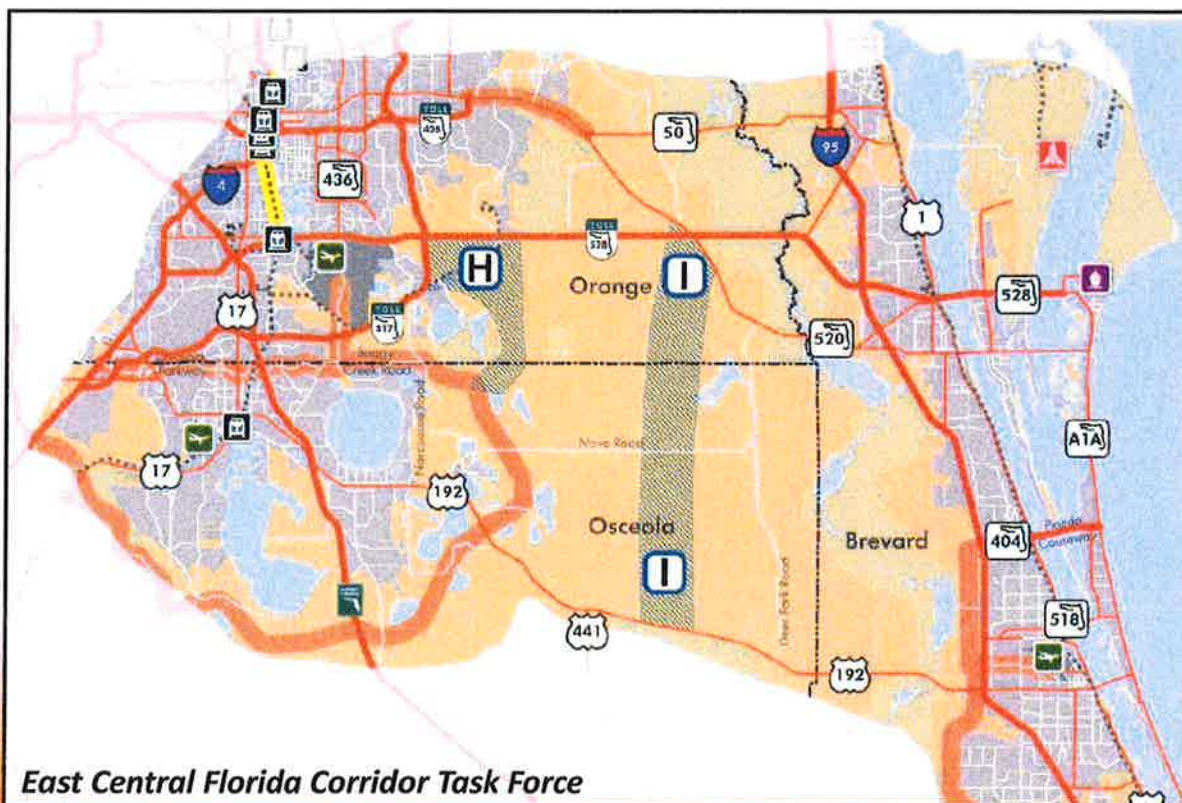
*East Central Florida Corridor Task Force*

**CENTRAL FLORIDA EXPRESSWAY AUTHORITY**

Slide #8

# Task Force Projects

## New North-South Corridors



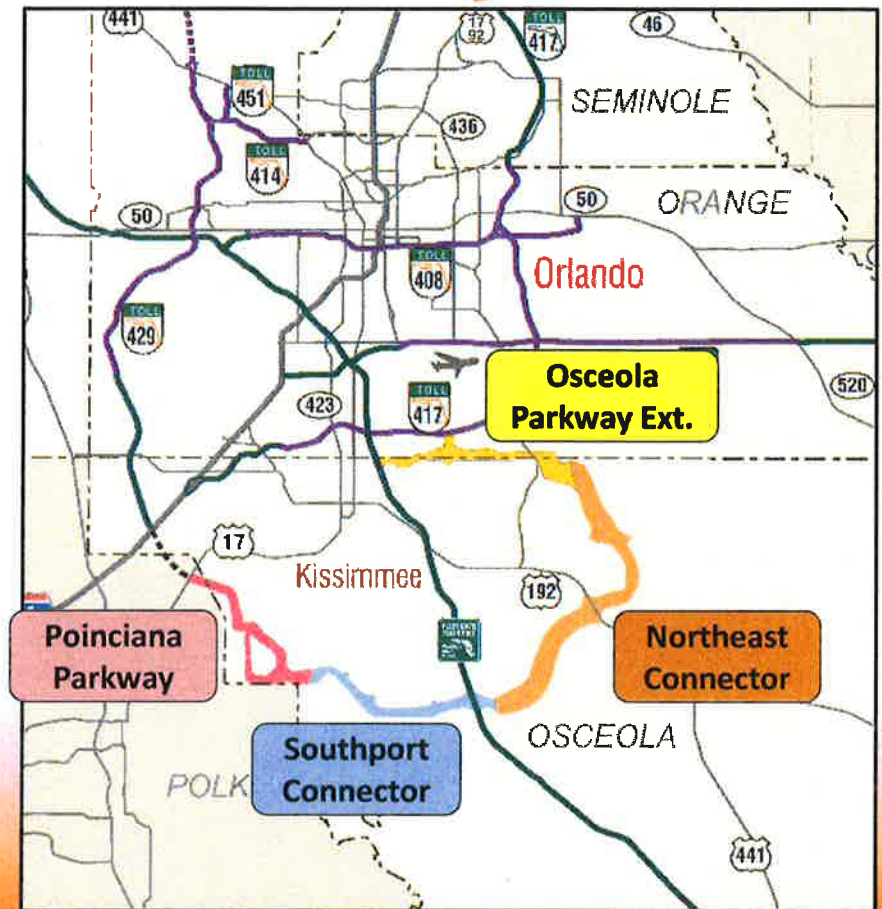
CENTRAL FLORIDA EXPRESSWAY AUTHORITY

Slide #9

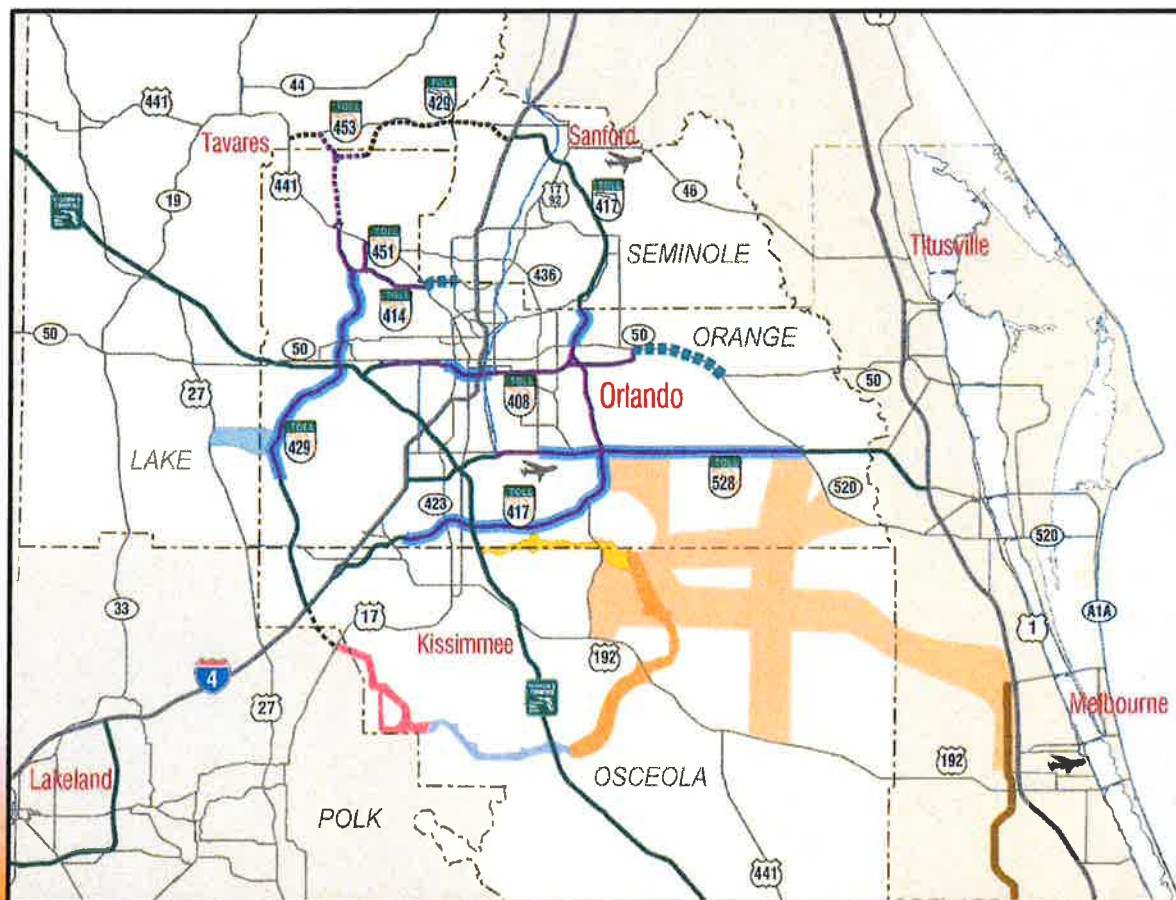


## OCX Master Plan Projects

- CFX legislation
- Projects
  - Osceola Parkway Ext
  - Northeast Connector
  - Southport Connector
  - Poinciana Parkway
- Approximately 60 new expressway miles



## 2040 Master Plan Candidates



CENTRAL FLORIDA EXPRESSWAY AUTHORITY

Slide #11



## »» Capital Projects Summary

### Estimated Costs *(2015 dollars)*

Existing System	\$2.0B
<u>Expansion Projects</u>	<u>\$8.6B - \$10.1B</u>
Total Cost Range	\$10.6B - \$12.1B

CFX Project Capacity \$4.65B