

# CONSTRUCTION QUICK FACTS



## PROJECT: SR 408 WIDENING FROM GOOD HOMES ROAD TO HIAWASSEE ROAD

The Central Florida Expressway Authority (CFX) is widening State Road 408 (Spessard L. Holland East-West Expressway) from Good Homes Road to east of Hiwassee Road. This two-mile project will add a travel lane in both directions (from two lanes to three lanes) and will widen the ramp from westbound SR 408 to Good Homes Road from one lane to two lanes.

Additional Improvements include:

- Widening the westbound SR 408 Lake Sherwood bridge from three lanes to four lanes.
- Widening the SR 408 Hiwassee Road bridges from two lanes to three lanes in each direction.
- Additional Open Road Tolling (ORT) lanes at the SR 408 Hiwassee Road Main Plaza (from two ORT lanes to three ORT lanes in both directions).
- Upgraded signage and new roadway lighting.
- Five sound walls.

During construction, nearby residents and property owners may experience some noise, vibration and dust. The Central Florida Expressway Authority will take steps to minimize the impact of construction on the surrounding community.

More than 71,700 vehicles a day travel this stretch of SR 408. Traffic volume is expected to increase to approximately 108,130 by 2035.

## LANE CLOSURES

During construction, temporary lane closures will be necessary to accommodate work. To minimize the impact of construction to motorists traveling on SR 408, lane closures will not be permitted during peak travel times.

Lane closures on SR 408 will be allowed on weekends and Monday through Friday between 9 p.m. and 5 a.m. There will be night and weekend work on this project.

## WORK ZONE SAFETY

For the safety of motorists and work crews, speed limits will be strictly enforced during construction. Speeding fines are doubled in work zones when workers are present. Motorists are reminded to change lanes for safety when they see Road Rangers assisting other motorists or flashing lights – it's Florida law.

## PUBLIC INFORMATION

For more information, contact the Public Information Officer:

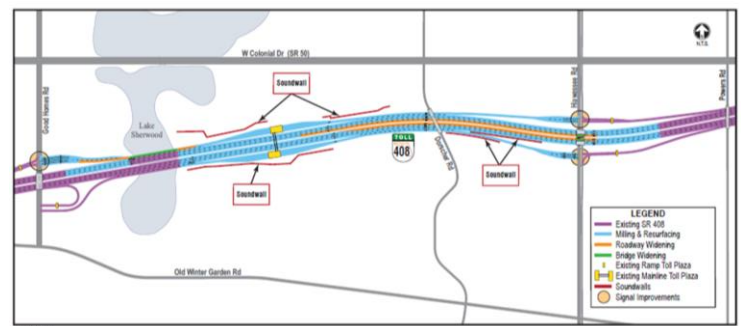
Phone: 407-383-5817

E-mail: [construction@CFXway.com](mailto:construction@CFXway.com)

or visit the website at [www.CFXway.com](http://www.CFXway.com)

Follow us on Twitter [@DriveEPASS](https://twitter.com/DriveEPASS) for current project information.

## PROJECT MAP (see reverse side for large map)



**QUICK  
FACTS**

### PROJECT START

Construction is scheduled to begin in October 2016

### ESTIMATED COMPLETION

Construction is expected to take approximately 18 months and to be completed in early 2018

### PROJECT COST

\$23.6 million for construction

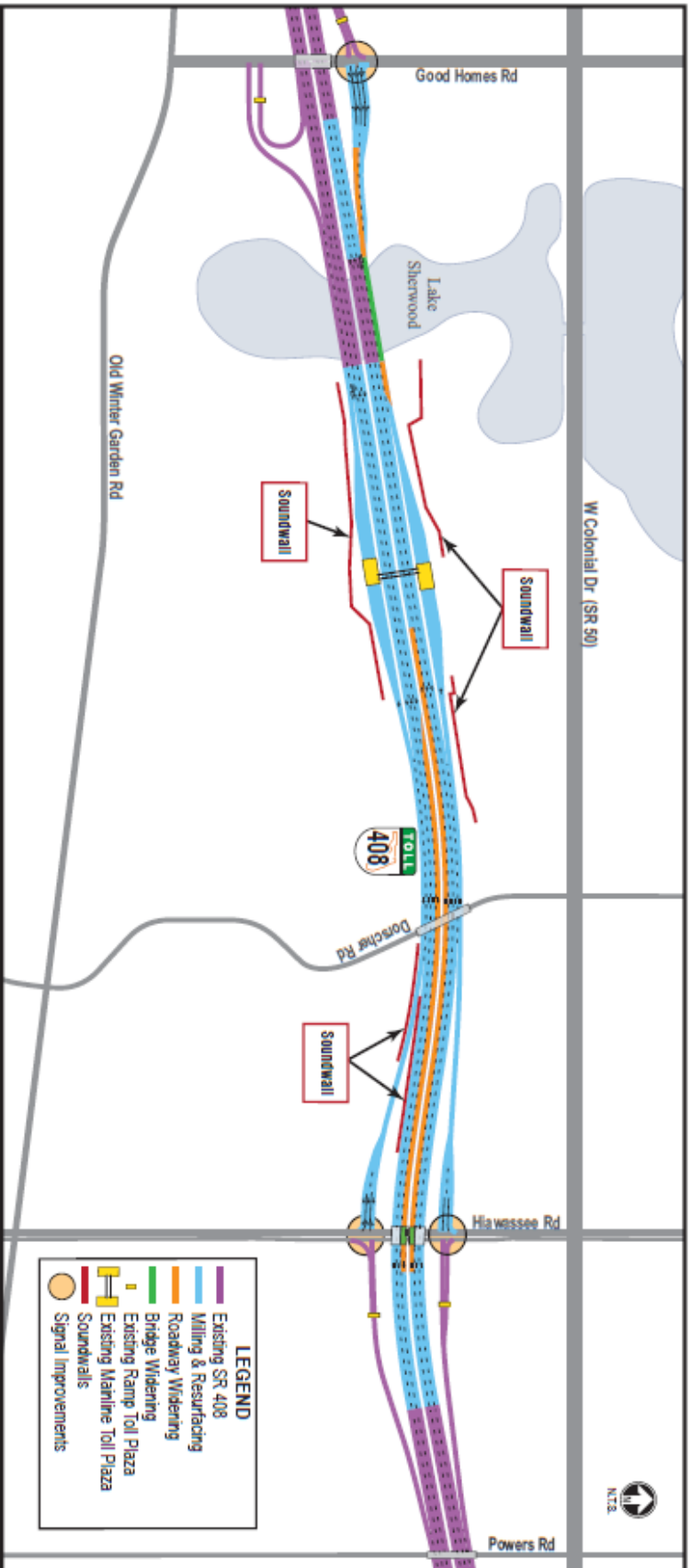
The Central Florida Expressway Authority is responsible for the planning, design, construction, operation, and maintenance of a 109-mile limited-access expressway system to serve the four county region. CFX's system includes SR 408 (Spessard L. Holland East-West Expressway), SR 528 (Martin Anderson Beachline Expressway), SR 417 (Central Florida GreeneWay), SR 429 (Daniel Webster Western Beltway), SR 414 (John Land Apopka Expressway) and State Road 451.

Central Florida Expressway Authority: 4974 ORL Tower Road, Orlando, Florida 32807  
Phone: 407.690.5000 | Fax: 407.690.5011 | Email: [construction@CFXWay.com](mailto:construction@CFXWay.com)

**CENTRAL  
FLORIDA  
EXPRESSWAY  
AUTHORITY**



# SR 408 Widening Project between Good Homes Road and Hiawassee Road (Project 408-127)



August 17, 2016