



SR 408 PD&E STUDY

QUICK FACTS

PROPOSED SR 408 EAST EXTENSION PROJECT DEVELOPMENT AND ENVIRONMENT (PD&E) STUDY

The Central Florida Expressway Authority (CFX) is studying the potential extension of State Road 408 (Spessard L. Holland East-West Expressway) east to SR 520 in eastern Orange County, Florida.

WHAT IS A PD&E STUDY?

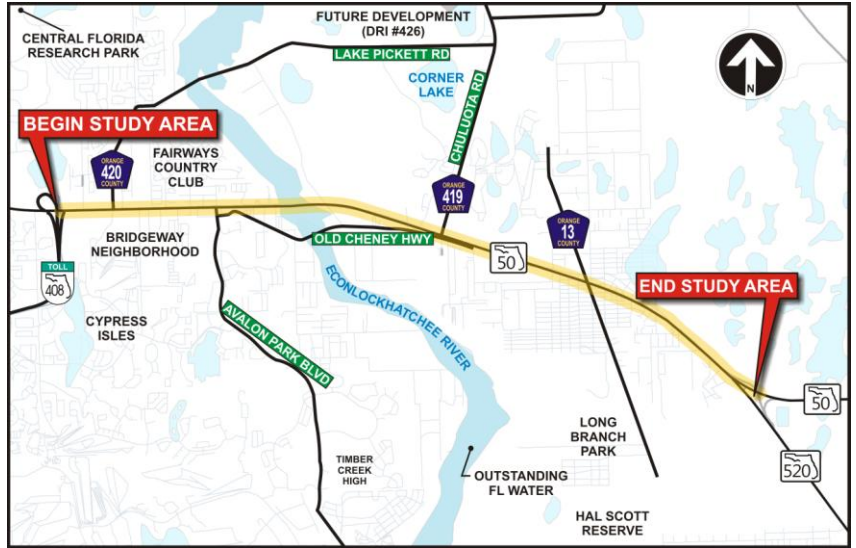
A PD&E study is the formal process that transportation agencies, such as CFX, use to ensure that consideration is given to engineering design, project costs, environmental and social impacts and public input in the development of major transportation projects. The basic steps of a PD&E study include data collection, development and analysis of the transportation alternatives and project documentation. During the study, the team will work to identify potential impacts, both adverse and beneficial, that may occur by implementing any of the alternatives. The results of these analyses will be presented to the public and documented in a series of technical study reports and the State Environmental Impact Report (SEIR).

PUBLIC INFORMATION

One of the most important aspects of a PD&E Study is public involvement. Your input is important to the success of the project. Opportunities for you to provide your input will be available throughout the study public meetings, small group meetings, and the project website www.CFXway.com/408study.

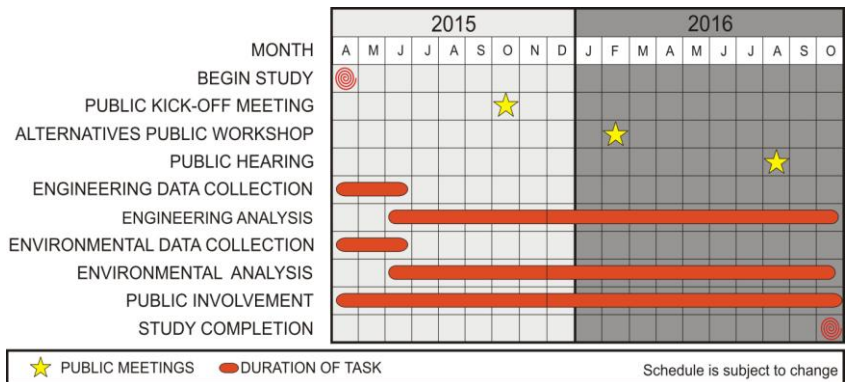
Para más información en español acerca del proyecto, por favor comuníquese con Alicia Gonzalez al 786-280-6645 o por correo electrónico agonzalez@mrgmiami.com.

STUDY AREA MAP



STUDY SCHEDULE

The Proposed SR 408 East Extension PD&E project began in April 2015 and is expected to be completed in late 2016. The figure below illustrates a tentative project schedule including key milestones. For more information please visit the study website at www.CFXway.com/408study.



QUICK FACTS

STUDY DURATION

PD&E started in April 2015 and is anticipated to be completed in late 2016.

CONTACT:

Valerie Tutor, Public Information Officer
Phone: 941-504-9440
Email: vtutor@mrgmiami.com

NEXT STEPS

Public Alternatives Workshop
February 2016

Because roads don't stop at county lines, the regional Central Florida Expressway Authority's jurisdiction includes Lake, Orange, Osceola and Seminole Counties. CFX is responsible for the construction, maintenance and operation of a 109-mile limited-access expressway system. It may also acquire, construct and equip rapid transit, trams and fixed guideways within its rights-of-way. CFX's system includes SR 408 (Spessard Holland East-West Expressway), SR 528 (Martin Andersen Beachline Expressway), SR 417 (Central Florida GreeneWay), SR 429 (Daniel Webster Western Beltway), SR 414 (John Land Apopka Expressway) and State Road 451.

Central Florida Expressway Authority: 4974 ORL Tower Road, Orlando, Florida 32807

