



SR 408 PD&E STUDY

EASTERN EXTENSION FROM SR 50 TO THE SR 50/SR 520 INTERSECTION

Project Identification Number: 408-254

www.CFXway.com/408study

Newsletter 2, February 2016

PD&E STUDY OVERVIEW

In May 2015, the **Central Florida Expressway Authority (CFX)** began a Project Development and Environment (PD&E) Study for the proposed SR 408 (Spessard L. Holland East-West Expressway) Eastern Extension from SR 50 to the SR 50/SR 520 Intersection in East Orange County.

The objective of this study is to help CFX reach a decision on the type, design and location of the potential eastern extension of SR 408. All factors related to the design and location of the proposed expressway must be considered. These include transportation needs, social impacts, economic factors, environmental impacts, engineering analysis and right-of-way requirements.

ALTERNATIVES PUBLIC WORKSHOP

CFX invites you to an Alternatives Public Workshop regarding potential transportation improvements to SR 408 Eastern Extension from State Road 50 to the SR 50/State Road 520 intersection in east Orange County. The purpose of this Public Workshop is to provide the public with an opportunity to review and comment on the alternatives developed for the project. Representatives from the PD&E Study team will be present to answer your questions concerning the presentation, display boards and the alternatives evaluation process and results.

The meeting will be held on **Tuesday, March 8, 2016, at the Eastpoint Fellowship Church, located at 15060 Old Cheney Highway, Orlando, Florida 32828**. It will provide an introduction to the project, the status of the study and the opportunity for you to ask questions and provide input. The meeting will be held in an open house format from **5:00 p.m. to 7:00 p.m.** A presentation, which will be playing on a continuous loop throughout the event, will also be available for viewing. Participants may review project information and discuss the project with project staff during the meeting. Your attendance is encouraged and appreciated.

PROJECT UPDATE

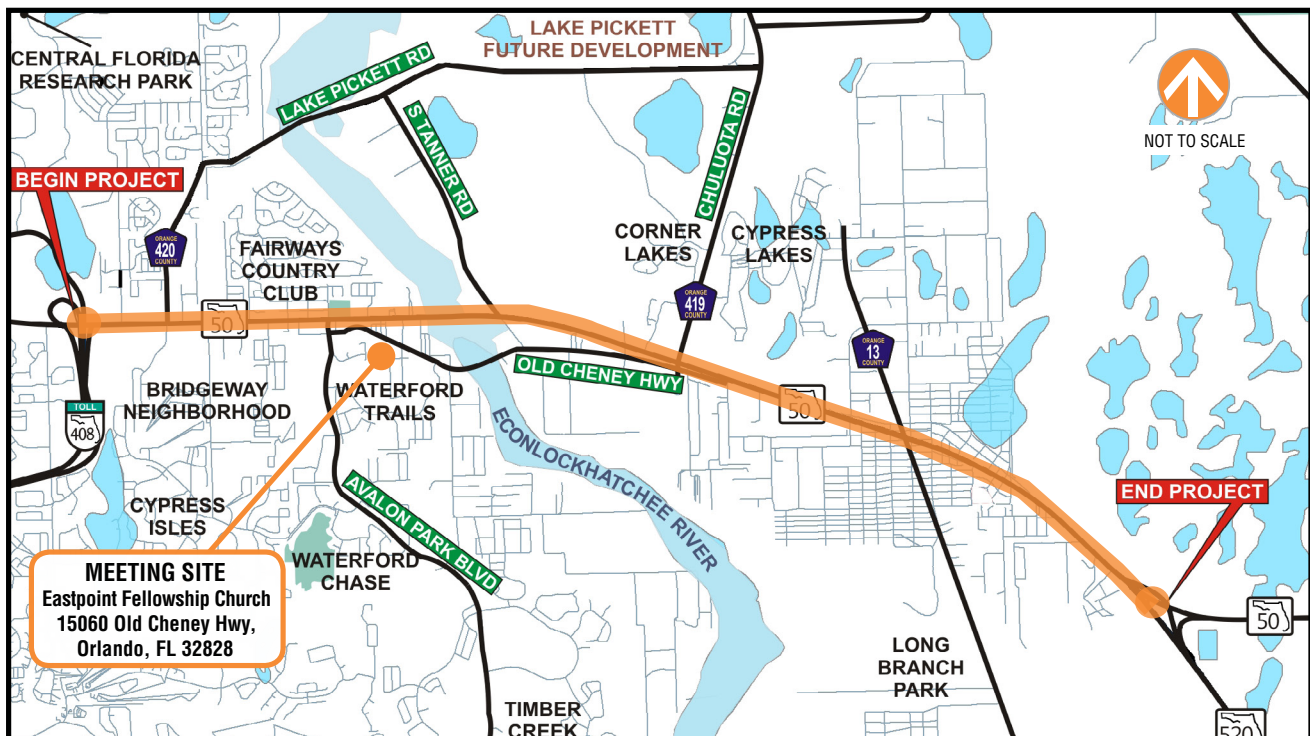
CFX has finalized an update to the Corridor Development and Evaluation Report prepared in 2008. The results of both studies indicate that the most feasible location for the future eastern extension of SR 408 is along the existing SR 50 corridor. Several alternative concepts have been developed and evaluated including SR 408 alignments just to the north, just to the south, and in the median of SR 50. Different concepts for the expressway that include both elevated and at ground level options were also considered. The most feasible alternatives in terms of minimizing impacts, improving traffic service and minimizing costs have been selected for further evaluation and will be on display at the Alternatives Public Workshop. We invite you to assist CFX in the evaluation of these alternatives by providing comments to our engineering team.

PUBLIC INVOLVEMENT

One of the most important aspects of a PD&E Study is public involvement. Your input is important to the success of the project. Information received as a result of this public meeting, along with detailed analyses of the corridors, will form the basis for the range of alternatives to be further refined, evaluated and documented in the PD&E Study.

Opportunities for you to provide your input will be available throughout the study public meetings, small group meetings, and the project website www.CFXway.com/408study.

At the Public Kickoff meeting held in October 2015, more than 180 attendees were present and many took the opportunity to discuss the study and provide their concerns and feedback to members of the study team.



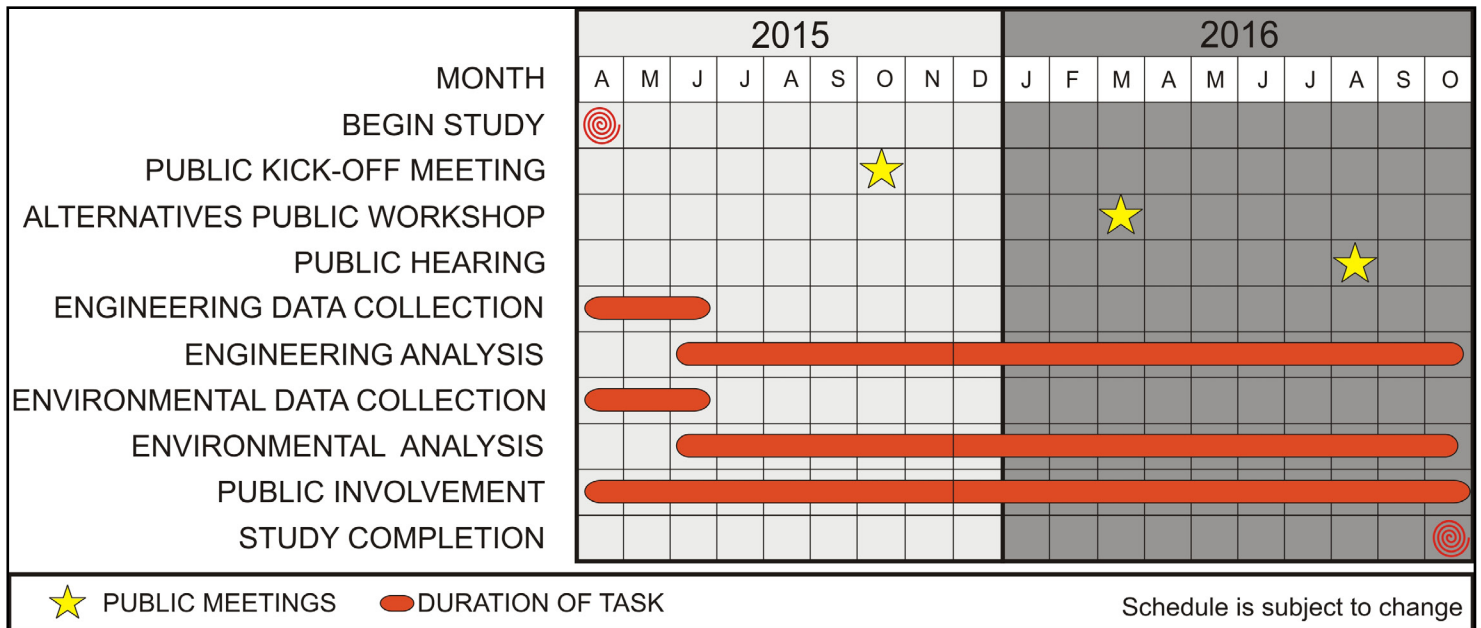
PUBLIC MEETING NOTICE



CENTRAL FLORIDA EXPRESSWAY AUTHORITY
ATTENTION: 408 PD&E
4974 ORL TOWER ROAD
ORLANDO, FL 32807

Public participation is solicited without regard to race, color, national origin, age, sex, religion, disability or family status. Persons who require special accommodations under the Americans with Disabilities Act or persons who require translation services, free of charge, should contact Valerie Tutor, Public Information Officer, via email: 408study@CFXway.com or phone: (941) 504-9440 at least seven (7) days prior to the meeting. Para más información en español acerca del proyecto, por favor comuníquese con Alicia Gonzalez al 786-280-6645 o por correo electrónico agonzalez@mrgmiami.com.

PROJECT SCHEDULE



PROJECT CONTACT

For project information, to provide comments regarding the study or to request a meeting with your group, please contact:

Valerie Tutor, Public Information Officer

Phone: 941-504-9440, Email: 408study@CFXway.com