

APPENDIX C

**BOCK HOUSE PROPERTY SITE PLAN AND PHOTOGRAPHS
AND
STRITE HOUSE PROPERTY SITE PLAN AND PHOTOGRAPHS**

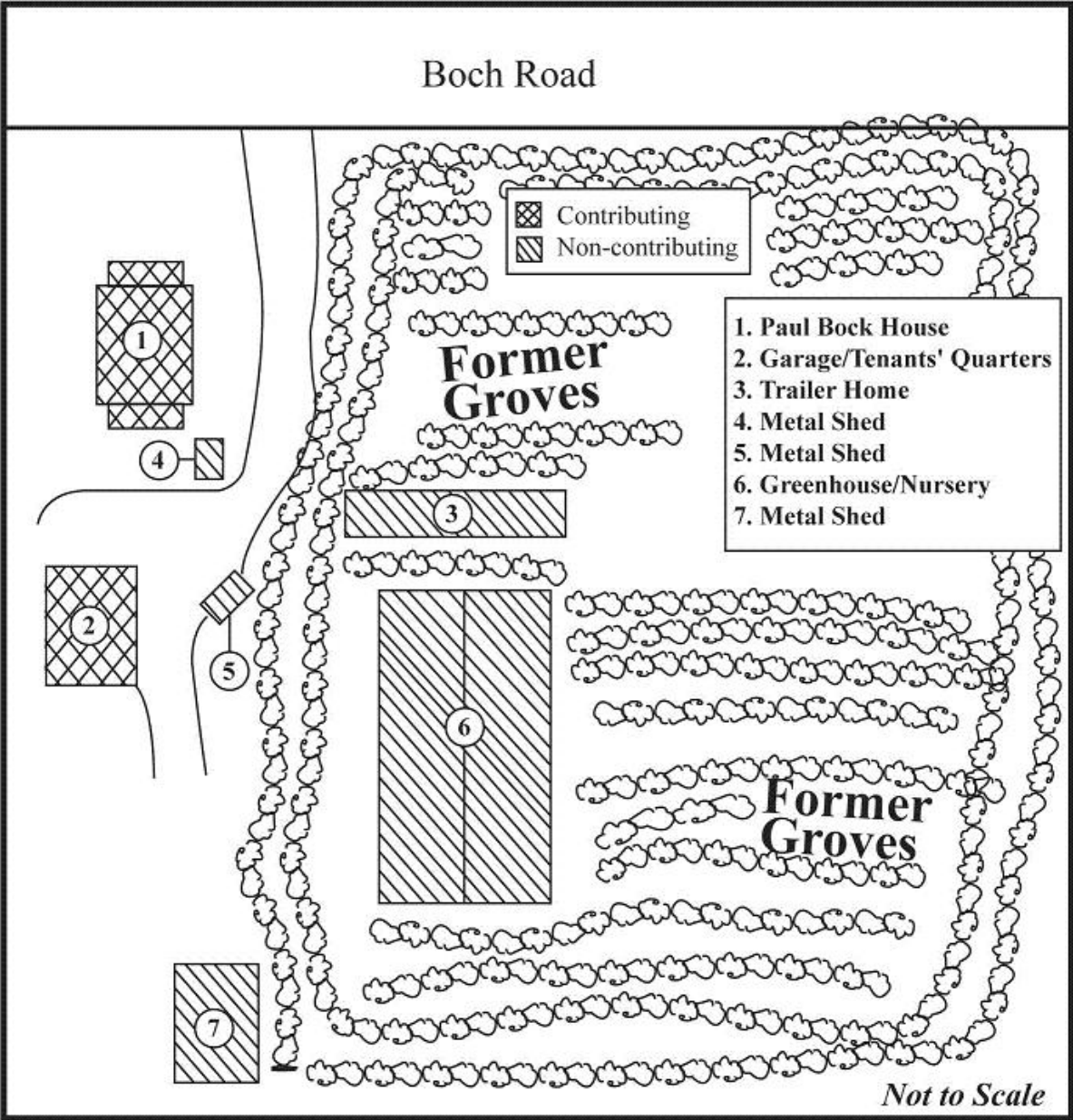


Exhibit C-1: Site Plan of Bock House Building Complex

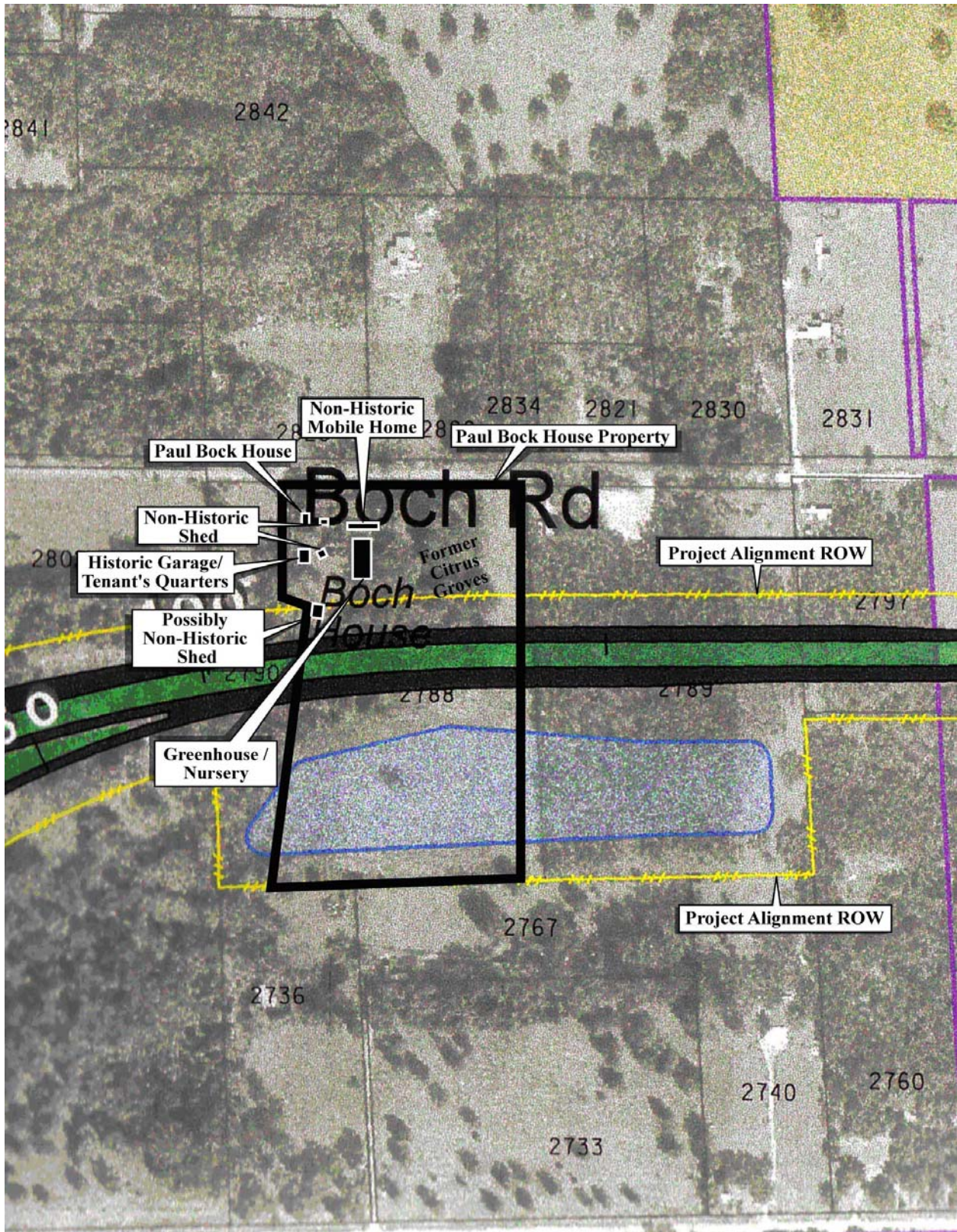


Exhibit C-2: Alternative 1 Alignment in Relation to Bock House and Property, Shown on a Current Aerial Photograph

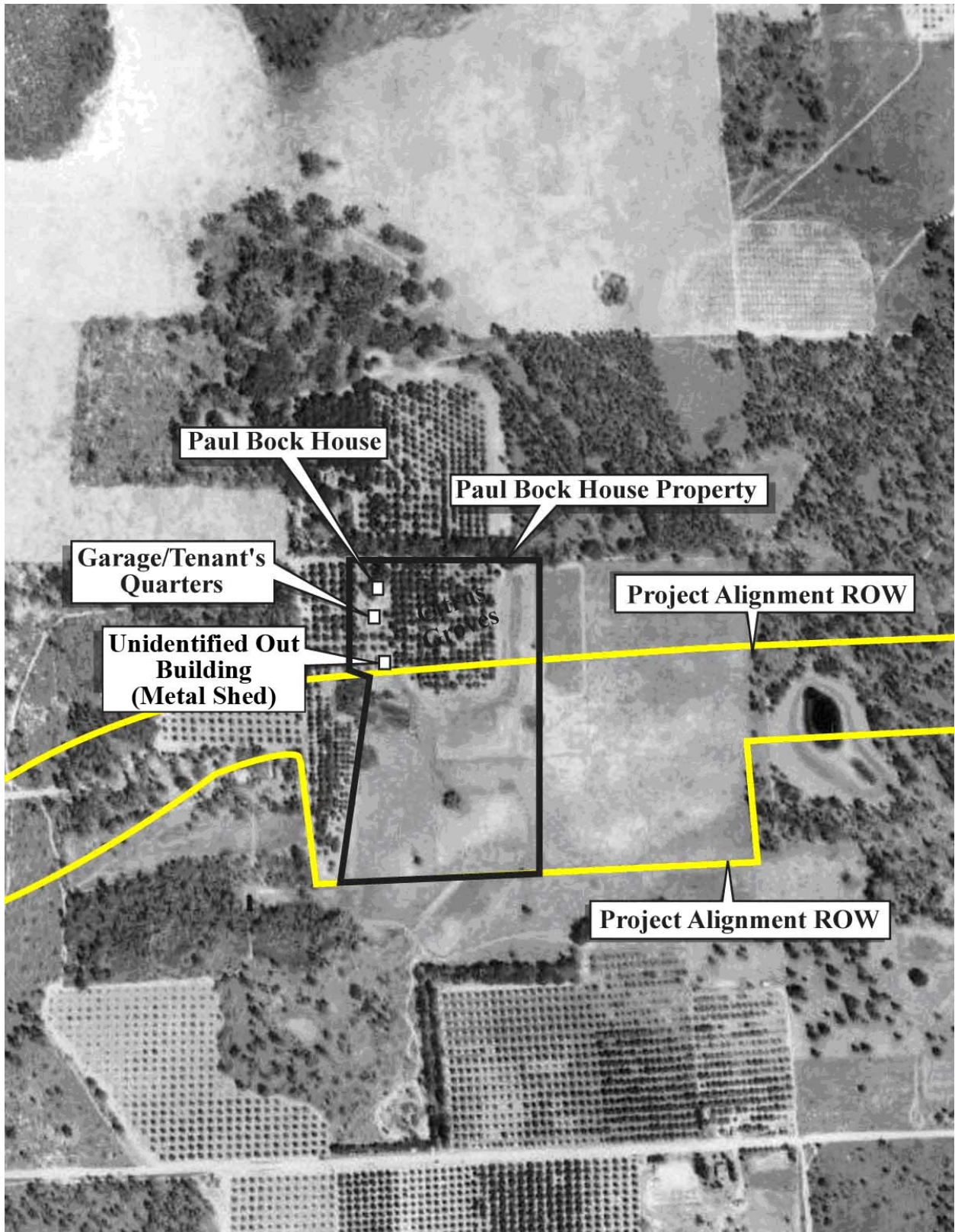


Exhibit C-3: Alternative 1 Alignment in Relation to Bock House and Property, Shown on a 1947 Aerial Photograph



Exhibit C-4: Bock House, Facing Southwest



Exhibit C-5: Bock House, Facing Southeast



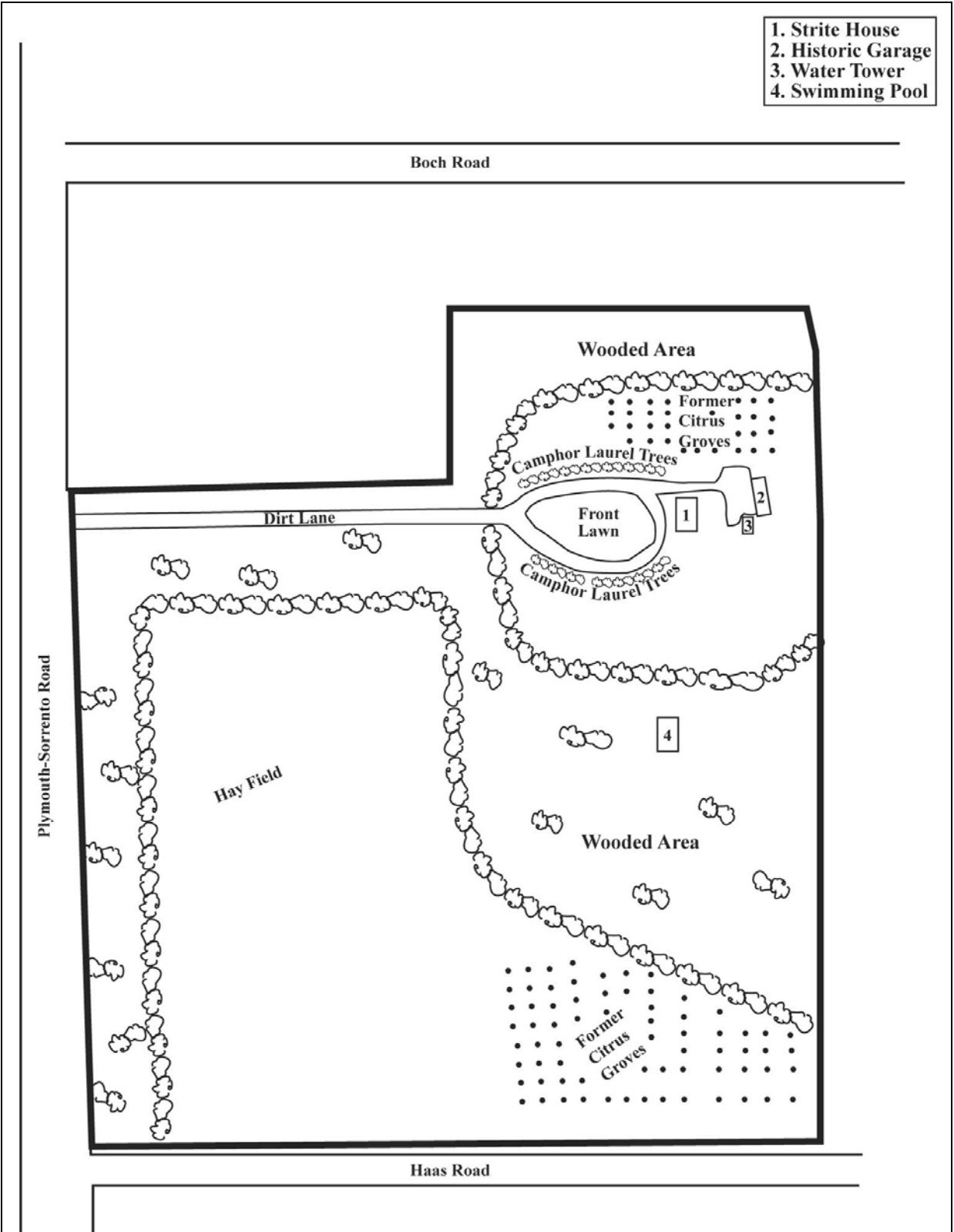
Exhibit C-6: Bock House, Facing Northwest



Exhibit C-7: Bock House and Associated Property from Boch Road, Facing Southwest



**Exhibit C-8: Former Citrus Groves and Associated Property at the Bock House
from Boch Road, Facing South**



- 1. Strite House
- 2. Historic Garage
- 3. Water Tower
- 4. Swimming Pool

Exhibit C-9: Site Plan of Strite House and Property

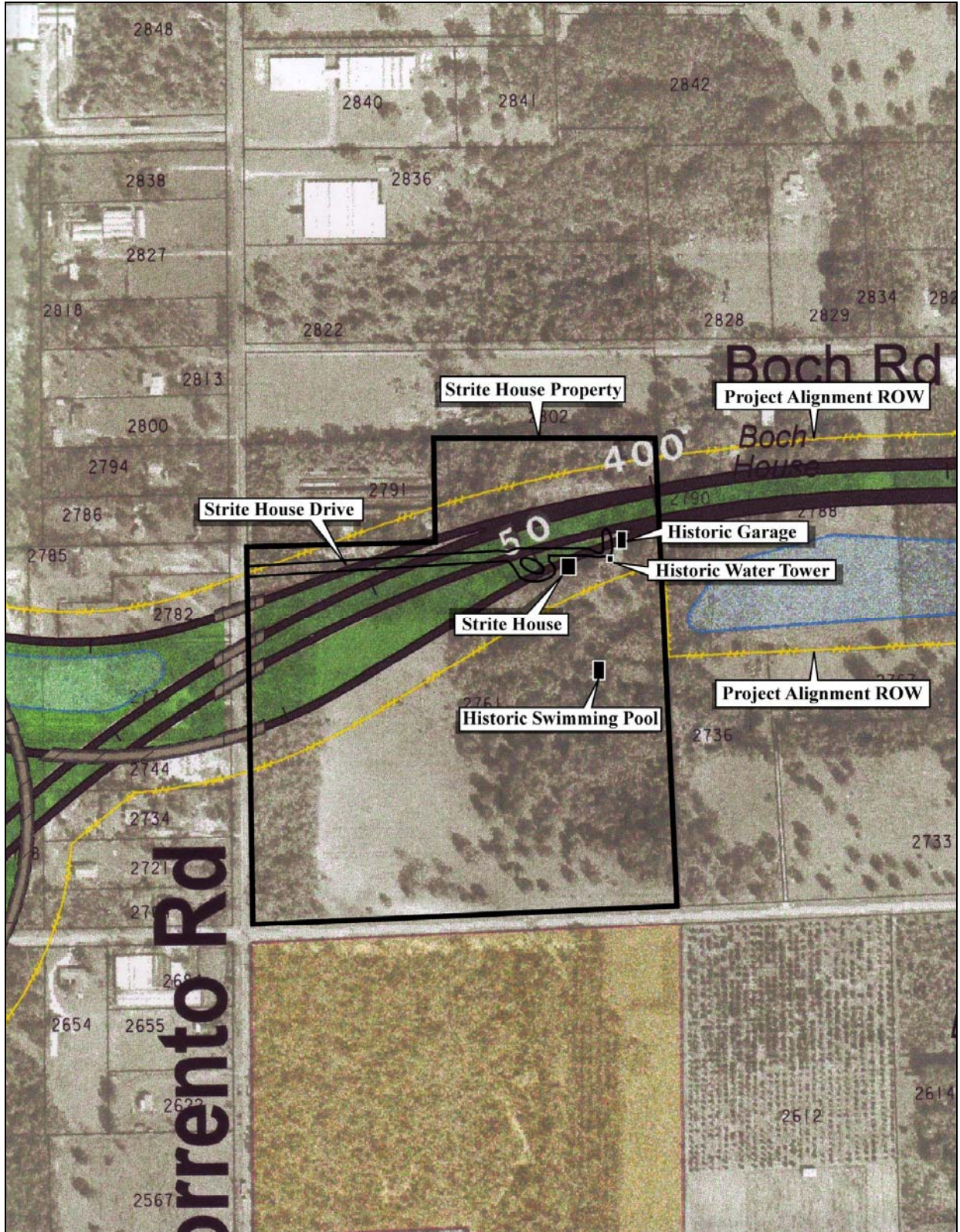
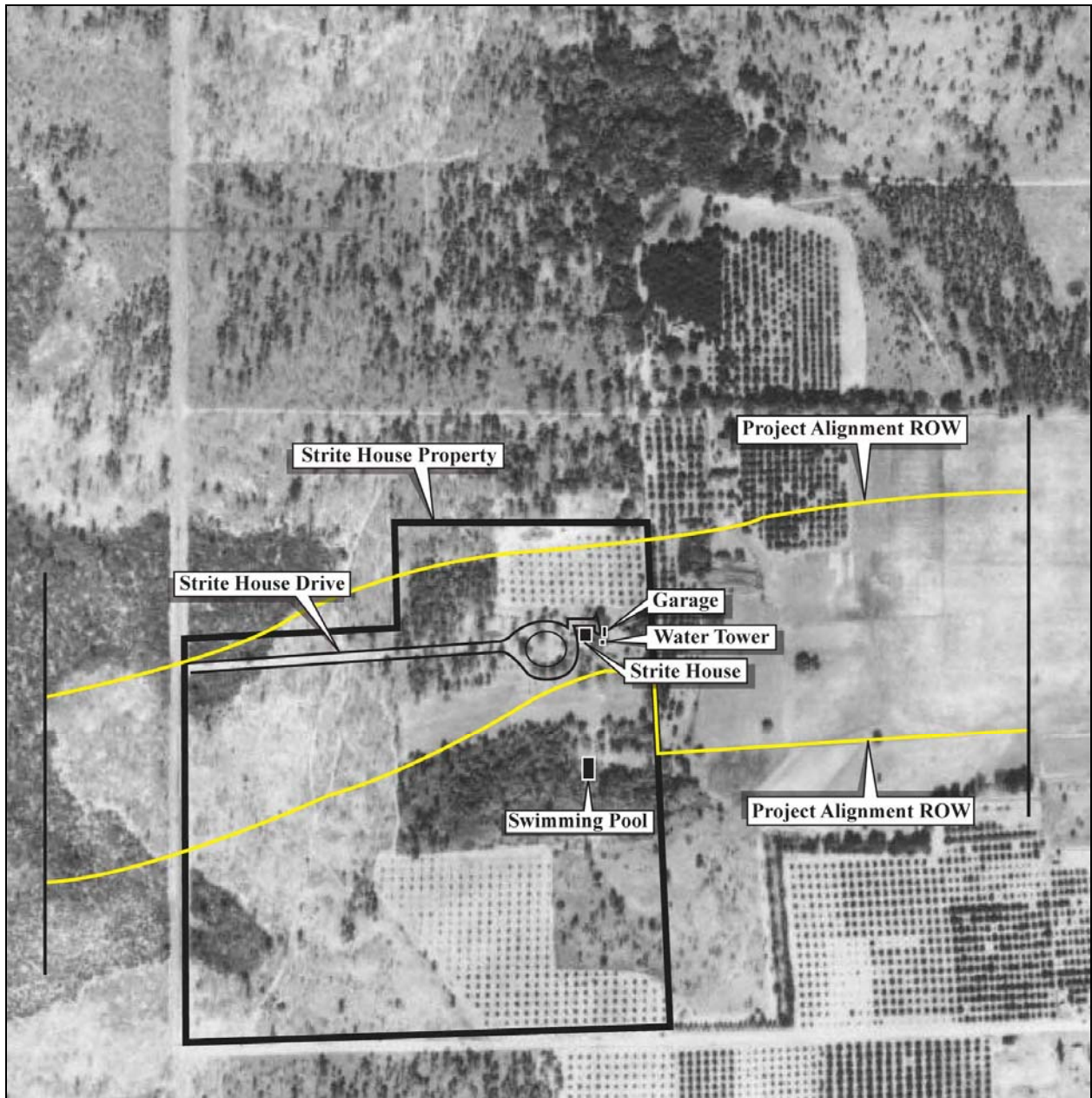


Exhibit C-10: Alternative 1 Alignment in Relation to Strite House and Property, Shown on a Current Aerial Photograph



**Exhibit C-11: Alternative 1 Alignment in Relation to Strite House and Property,
Shown on a 1941 Aerial Photograph**



Exhibit C-12: Strite House, Facing Southeast



Exhibit C-13: Strite House and Ancillary Structures, Facing North



Exhibit C-14: Historic Swimming Pool at the Strite House, Facing South



Exhibit C-15: Strite House and Front Lawn, Facing East



Exhibit C-16: Planted Camphor Laurel Trees Encircling Front Lawn, Facing East