

APPENDIX B

NOVEMBER 2005 PUBLIC WORKSHOPS

INITIAL ALTERNATIVES EXHIBITS

AND

IMPACT ANALYSIS SPREADSHEETS

CONTENTS:

Exhibit B-1 Overall Initial Alternatives/November 2005 Public Workshops

Exhibit B-2 Orange County Initial Alternatives/November 2005 Public Workshops

Impact Analysis Spreadsheets for Orange County Initial Alternatives

Exhibit B-3 Lake County West Initial Alternatives/November 2005 Public Workshops

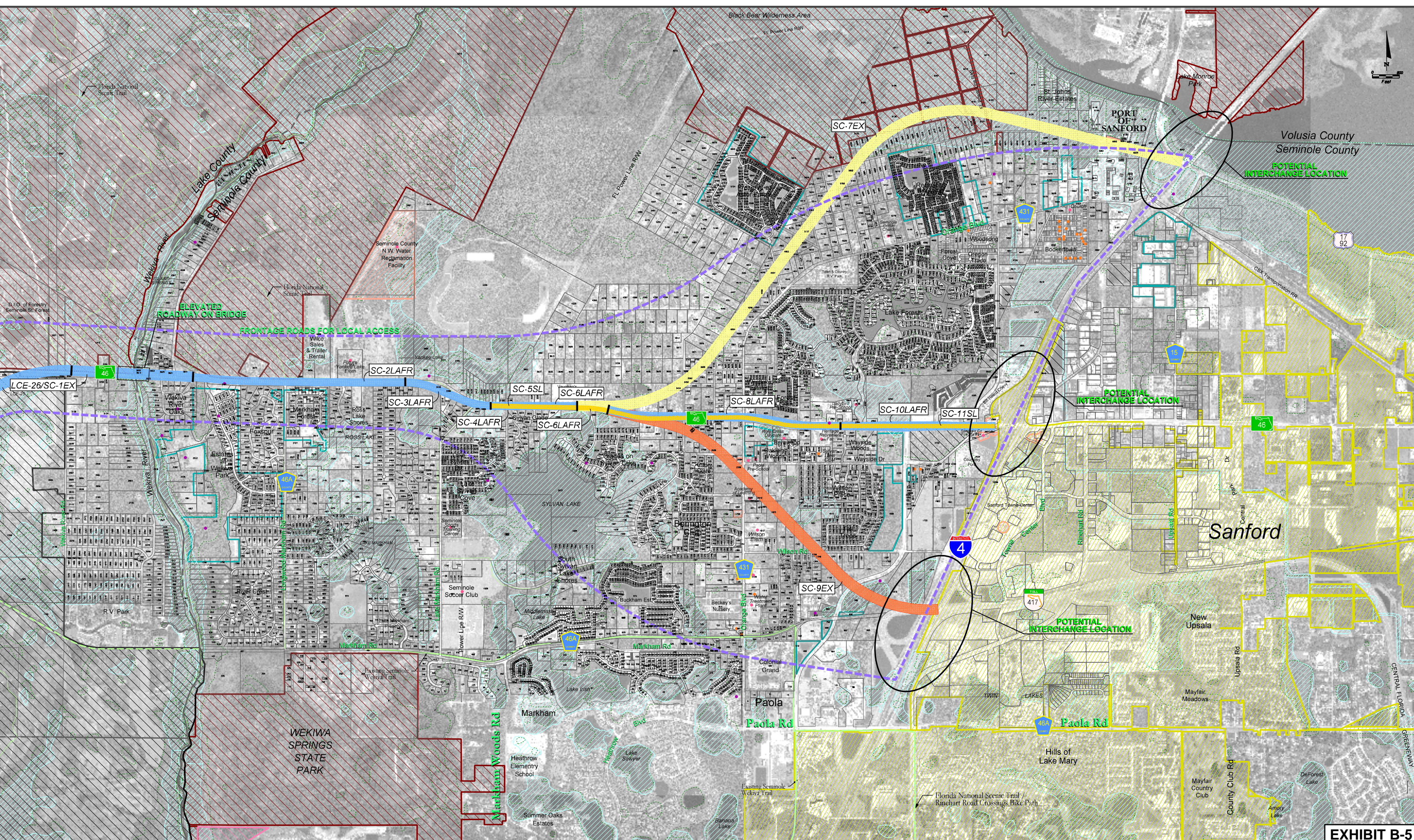
Impact Analysis Spreadsheets for Lake County West Initial Alternatives

Exhibit B-4 Lake County East Initial Alternatives/November 2005 Public Workshops

Impact Analysis Spreadsheets for Lake County East Initial Alternatives

Exhibit B-5 Seminole County Initial Alternatives/November 2005 Public Workshops

Impact Analysis Spreadsheets for Seminole County Initial Alternatives



LEGEND	
	POTENTIAL SCRUB JAY AREA
	POTENTIAL CONTAMINATION SITE
	COMMUNITY FACILITY SITE
	ARCHAEOLOGICAL SITE
	HISTORICAL SITE
	CITY BOUNDARY
	EXISTING TRAIL
	FUTURE TRAIL
	WEKIVA RIVER PROTECTION AREA
	PUBLIC LAND
	FLOOD PLAIN BOUNDARY
	WETLAND LINE
	EXISTING PARCEL LINE
	EXISTING SR 46 ROADWAY ALIGNMENT
	POTENTIAL PUBLIC LAND ACQUISITION
	WEKIVA PARKWAY CORRIDOR BOUNDARY
	SR 46 BYPASS CORRIDOR BOUNDARY

CH2MHILL
 225 E. Robinson Street, Suite 505
 Orlando, FL 32801-4321
 Tel 407.423.0030
 Cert. of Authorization No. 000072

WEKIVA PARKWAY
 Project Development and Environment Study
 Orange, Lake & Seminole Counties

SEMINOLE COUNTY
 Conceptual Alignment
 Alternative
 DATE: Nov. 09, 2005 1"=800'

EXHIBIT B-5
 SHEET NO.
 5

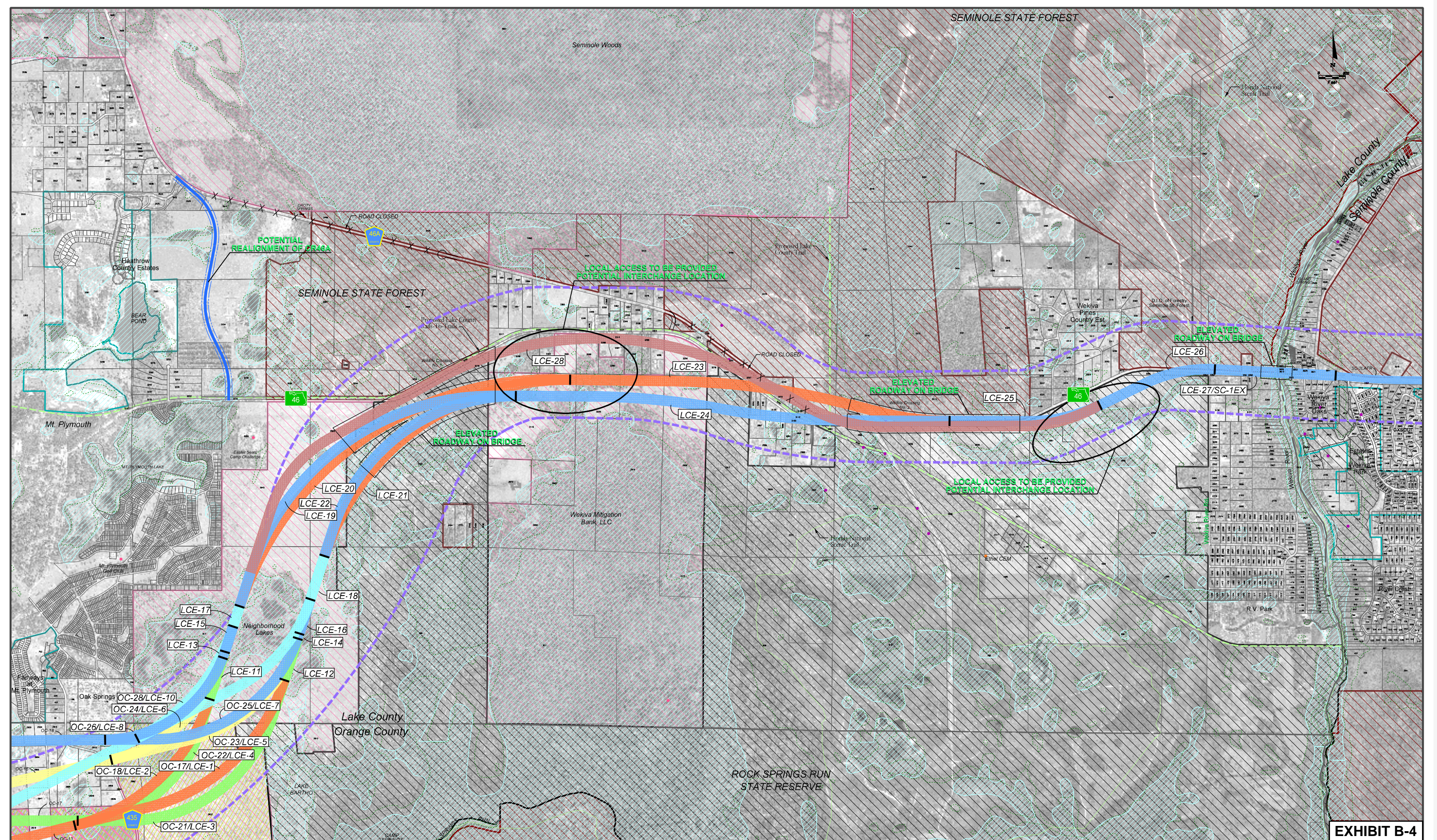


EXHIBIT B-4

LEGEND

POTENTIAL SCRUB JAY AREA	CITY BOUNDARY	FLOOD PLAIN BOUNDARY	WEKIVA PARKWAY CORRIDOR BOUNDARY
POTENTIAL CONTAMINATION SITE	EXISTING TRAIL	WETLAND LINE	SR 46 BYPASS CORRIDOR BOUNDARY
COMMUNITY FACILITY SITE	FUTURE TRAIL	EXISTING PARCEL LINE	
ARCHAEOLOGICAL SITE	WEKIVA RIVER PROTECTION AREA	EXISTING SR 46 ROADWAY ALIGNMENT	
HISTORICAL SITE	PUBLIC LAND	POTENTIAL PUBLIC LAND ACQUISITION	

EXPRESSWAY AUTHORITY
 STATE OF FLORIDA
 DEPARTMENT OF TRANSPORTATION
CH2MHILL
 225 E. Robinson Street, Suite 505
 Orlando, FL 32801-4321
 Tel: 407-423-0000
 Cert. of Authorization No. 000072

WEKIVA PARKWAY
 Project Development and Environment Study
 Orange, Lake & Seminole Counties

LAKE COUNTY EAST
 Conceptual Alignment
 Alternatives
 DATE: Nov. 09, 2005 1"=800'