

APPENDIX C

JULY/AUGUST 2006 PUBLIC WORKSHOPS
VIAABLE ALTERNATIVES EXHIBITS
AND
COMPARATIVE ASSESSMENT SPREADSHEETS

CONTENTS:

Exhibit C-1 Overall Viable Alternatives

Exhibit C-2 Orange County Kelly Park Road Interchange Alignment

Exhibit C-3 Orange County Ponkan Road Interchange Alignment

Kelly Park Road & Ponkan Road Alignment Alternatives Comparison Spreadsheet

Exhibit C-4 Wekiva Parkway/SR 46 Realignment - Systems Interchange Alternative 1

Exhibit C-5 Wekiva Parkway/SR 46 Realignment - Systems Interchange Alternative 2

Exhibit C-6 Wekiva Parkway/SR 46 Realignment - Systems Interchange Alternative 3

Exhibit C-7 Wekiva Parkway/SR 46 Realignment - Systems Interchange Alternative 4

Exhibit C-8 Wekiva Parkway/SR 46 Realignment - Systems Interchange Alternative 5

Exhibit C-9 Wekiva Parkway/SR 46 Realignment - Systems Interchange Alternative 6

Orange County / Lake County West Systems Interchange Alternatives Comparison Spreadsheet

Exhibit C-10 Lake County West Alignment Alternatives

Lake County West Alignment Alternatives Comparison Spreadsheet

Exhibit C-11 Lake County West - US 441/SR 46 Interchange Alternative 1

Exhibit C-12 Lake County West - US 441/SR 46 Interchange Alternative 2

Exhibit C-13 Lake County West - US 441/SR 46 Interchange Alternative 3

Lake County West Interchange Alternatives Comparison Spreadsheet

Exhibit C-14 Lake County East – Neighborhood Lakes Alternative 1

Exhibit C-15 Lake County East – Neighborhood Lakes Alternative 2

Exhibit C-16 Lake County East – Neighborhood Lakes Alternative 3

Lake County East Neighborhood Lakes Alignment Alternatives Comparison Spreadsheet

Exhibit C-17 Lake County East – CR 46A Realignment Alternative 1

Exhibit C-18 Lake County East – CR 46A Realignment Alternative 2

CR 46A and Neighborhood Lakes Interchange Alignment Alternatives Comparison Spreadsheet

Exhibit C-19 Lake County East – Local Access Alternative 1

Exhibit C-19a Lake County East – Local Access Alternative 1A

Exhibit C-20 Lake County East – Local Access Alternative 2

Exhibit C-20a Lake County East – Local Access Alternative 2A

Exhibit C-21 Lake County East – Local Access Alternative 3

Exhibit C-22 Lake County East – Local Access Alternative 4

Exhibit C-23 Lake County East – Local Access Alternative 5

Lake County East Local Access Interchange Alternatives Comparison Spreadsheet

Exhibit C-24 Seminole County – Wekiva Parkway with Frontage Roads North Widening

Exhibit C-25 Seminole County – Wekiva Parkway with Frontage Roads South Widening

Exhibit C-26 Seminole County – Wekiva Parkway with SR 417/I-4 Interchange

Exhibit C-27 Seminole County – Wekiva Parkway with SR 46/I-4 Interchange Alternative 1

Exhibit C-28 Seminole County – Wekiva Parkway with SR 46/I-4 Interchange Alternative 2

Seminole County Alternatives Comparison (from Wekiva River to I-4) Spreadsheet

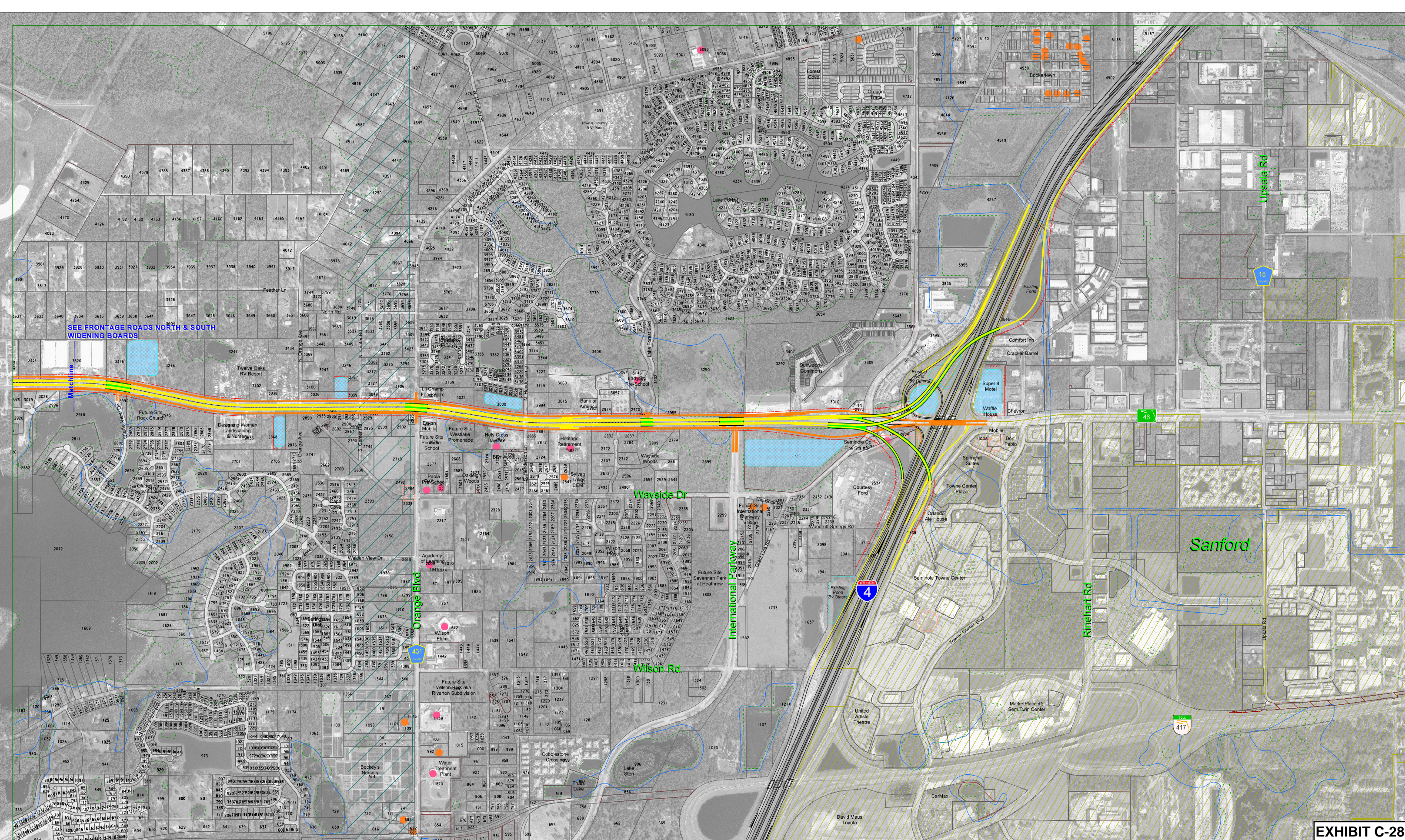


EXHIBIT C-28

LEGEND

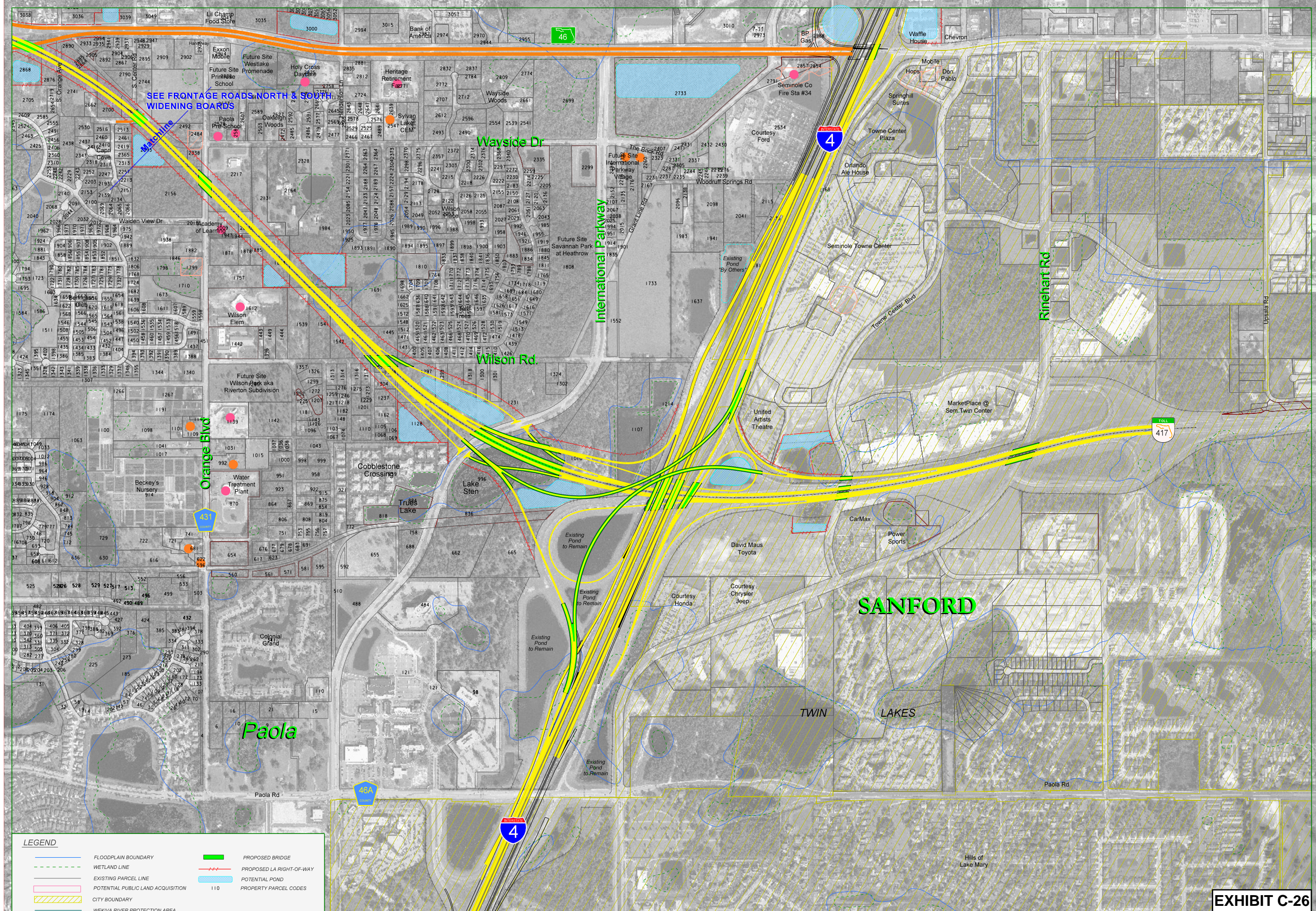
	FLOODPLAIN BOUNDARY		CITY BOUNDARY		COMMUNITY FACILITY SITE		PROPOSED BRIDGE
	WETLAND LINE		POTENTIAL CONTAMINATION SITE		HISTORICAL SITE		PROPOSED LA RIGHT-OF-WAY
	EXISTING PARCEL LINE		PUBLIC LAND				PROPOSED RIGHT-OF-WAY
	POTENTIAL PUBLIC LAND ACQUISITION		WEEKLY RIVER PROTECTION AREA				POTENTIAL POND
							PROPERTY PARCEL CODES

CH2MHILL
225 E. Robinson Street, Suite 505
Orlando, FL 32801-4321
Tel 407-423-0030
Florida License No. 000072

SEMINOLE COUNTY
Viable Alternatives
SR 46 / I-4 Interchange Alternative 2
JULY 25, 2006 1"= 400'

0 400 Feet





LEGEND

- | | | | |
|--|-----------------------------------|--|--------------------------|
| | FLOODPLAIN BOUNDARY | | PROPOSED BRIDGE |
| | WETLAND LINE | | PROPOSED LA RIGHT-OF-WAY |
| | EXISTING PARCEL LINE | | POTENTIAL POND |
| | POTENTIAL PUBLIC LAND ACQUISITION | | PROPERTY PARCEL CODES |
| | CITY BOUNDARY | | |
| | WEKIVA RIVER PROTECTION AREA | | |
| | PUBLIC LAND | | |
| | POTENTIAL CONTAMINATION SITE | | |
| | COMMUNITY FACILITY SITE | | |
| | HISTORICAL SITE | | |



SEMINOLE COUNTY
Viable Alternatives
Wekiva Parkway, SR 417 / I-4
Interchange
JUNE 25, 2006 1" = 400'

EXHIBIT C-26



