

Lake County East Local Access Interchange Alternatives Comparison																
Alternative	Parcel Impacts	Area Impacts (Acres)						Displacements			Noise (Potential Impacts within 200' of ROW)		Other	Preliminary Construction Cost Estimate (2006 \$)	Preliminary R/W Cost Estimate (2006 \$)	Total Preliminary Cost Estimate (2006 \$)
		Roadway	Pond	Relocated Gas Easement	Public Land	100-Year Floodplain	Wetland	Residential	Nursery		Residential Dwellings	Parks and Conservation Areas				
Local Access South Alignment Alternative 1 (Exhibit C-19)	53	174	64	5	140	24	15	1	2	0	3	2 (SSF, RSRSR)	Split-diamond Interchange ¹	312.5 M	16.0 M	328.5 M
Local Access South Alignment Alternative 2 (Exhibit C-20)	55	201	66	5	157	27	16	1	2	0	4	2 (SSF, RSRSR)	Full Interchanges ²	341.3 M	16.4 M	357.7 M
Local Access South Alignment Alternative 3 (Exhibit C-21)	50	188	60	5	143	26	18	1	2	0	3	2 (SSF, RSRSR)	Full Interchanges ²	330.9 M	15.1 M	346.0 M
Local Access North Alignment Alternative 4 (Exhibit C-22)	54	171	63	5	135	16	7	7	2	1 (Cell Tower)	7	2 (SSF, RSRSR)	Split-diamond Interchange ¹	312.9 M	31.3 M	344.2 M
Local Access North Alignment Alternative 5 (Exhibit C-23)	49	186	60	5	139	19	8	7	2	1 (Cell Tower)	10	2 (SSF, RSRSR)	Full Interchanges ²	330.9 M	31.0 M	361.9 M
Local Access South Alignment Alternative 1A (Blue Alignment) (Exhibit C-19a)	45	171	68	5	137	23	17	4	0	0	4	2 (SSF, RSRSR)	Split-diamond Interchange ¹	312.6 M	21.3 M	333.9 M
Local Access South Alignment Alternative 2A (Blue Alignment) (Exhibit C-20a)	47	192	60	5	153	26	18	4	0	0	4	2 (SSF, RSRSR)	Full Interchanges ²	341.4 M	21.3 M	362.7 M

SSF -Seminole State Forest

RSRSR - Rock Springs Run State Reserve

¹ Split-diamond Interchange: A portion of SR 46 remains open between CR 46A remnant and the connector to Wekiva River Road.

² Full Interchanges: SR 46 closed from west of CR 433 to Wekiva Pines Country Estates entrance.

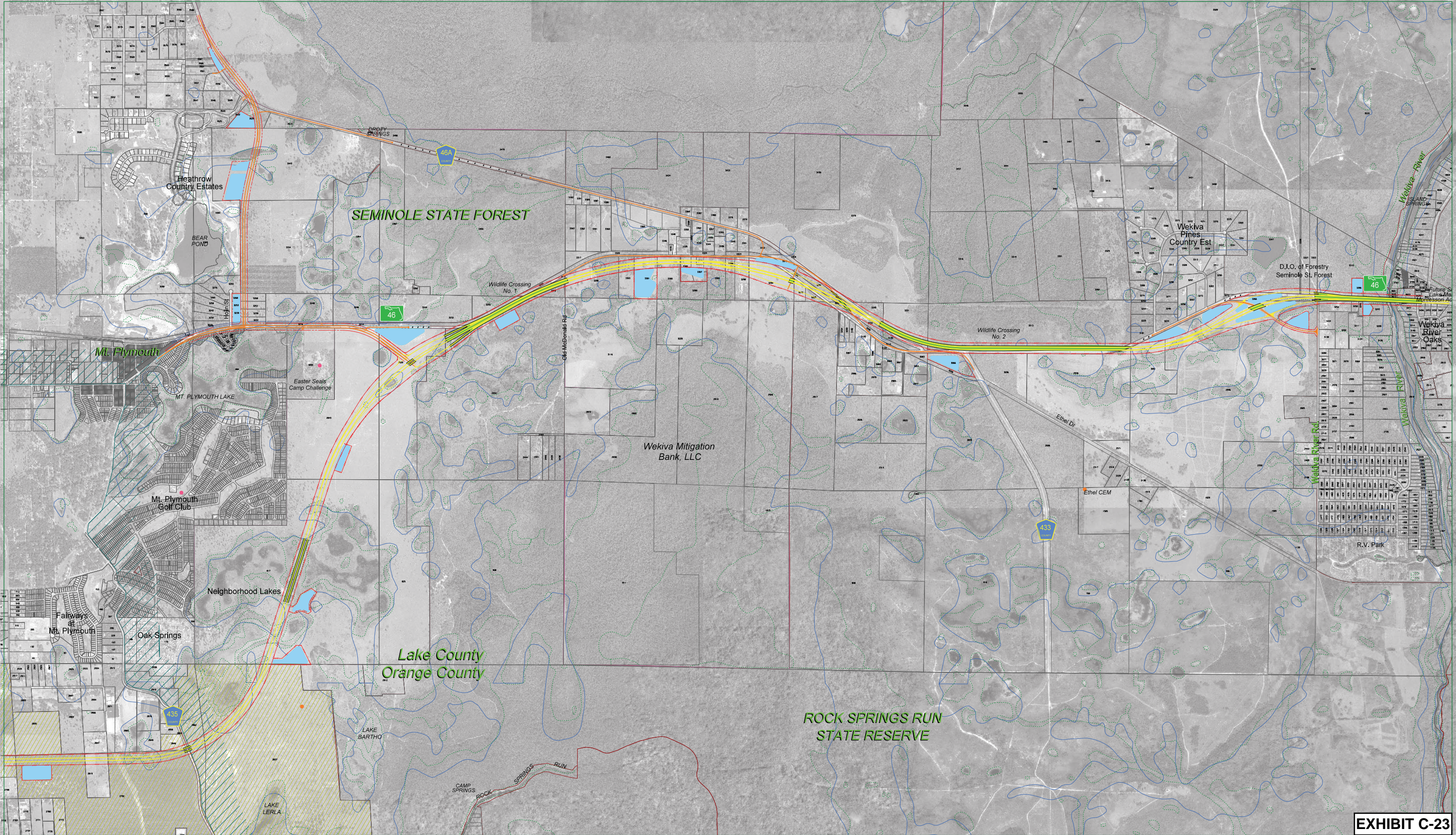


EXHIBIT C-23

LEGEND

● COMMUNITY FACILITY SITE	▨ CITY BOUNDARY	— FLOODPLAIN BOUNDARY	— PROPOSED BRIDGE
● HISTORICAL SITE	— WEKIVA RIVER PROTECTION AREA	— WETLAND LINE	— PROPOSED LA RIGHT-OF-WAY
	— PUBLIC LAND	— EXISTING PARCEL LINE	— PROPOSED RIGHT-OF-WAY
	— POTENTIAL PUBLIC LAND ACQUISITION	—	— POTENTIAL POND
			825 PROPERTY PARCEL CODES

225 E. Robinson Street, Suite 505
Orlando, FL 32801-4321
Tel: 407.423.0030
Cert. of Authorization No. 000072

Project Development and Environment Study
Orange, Lake & Seminole Counties

LAKE COUNTY EAST
Local Access North Alignment
Alternative 5
(Three Full Interchanges)
AUG 14, 2006 1" = 800'