

EXHIBIT C-22

LEGEND

● COMMUNITY FACILITY SITE	▨ CITY BOUNDARY	— FLOODPLAIN BOUNDARY	— PROPOSED BRIDGE
● HISTORICAL SITE	— WEKIVA RIVER PROTECTION AREA	— WETLAND LINE	— PROPOSED LA RIGHT-OF-WAY
	— PUBLIC LAND	— EXISTING PARCEL LINE	— PROPOSED RIGHT-OF-WAY
	— POTENTIAL PUBLIC LAND ACQUISITION		— POTENTIAL POND
			825 PROPERTY PARCEL CODES

225 E. Robinson Street, Suite 505
Orlando, FL 32801-4321
Tel: 407.423.0030
Cert. of Authorization No. 000072

WEKIVA PARKWAY
Project Development and Environment Study
Orange, Lake & Seminole Counties

LAKE COUNTY EAST
Local Access North Alignment
Alternative 4
(Split Diamond Interchange)
Aug 14, 2006 1"= 800'

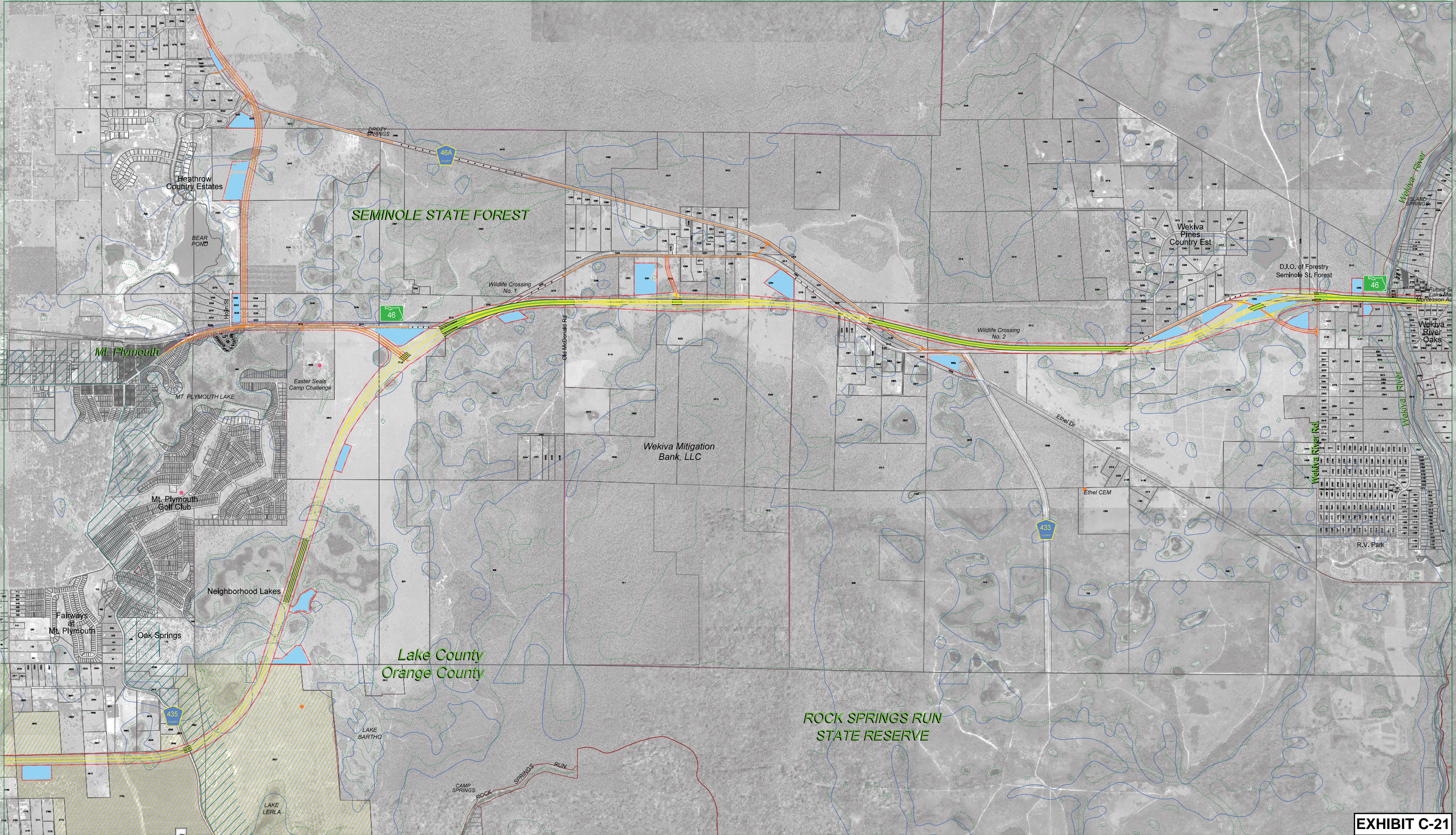


EXHIBIT C-21

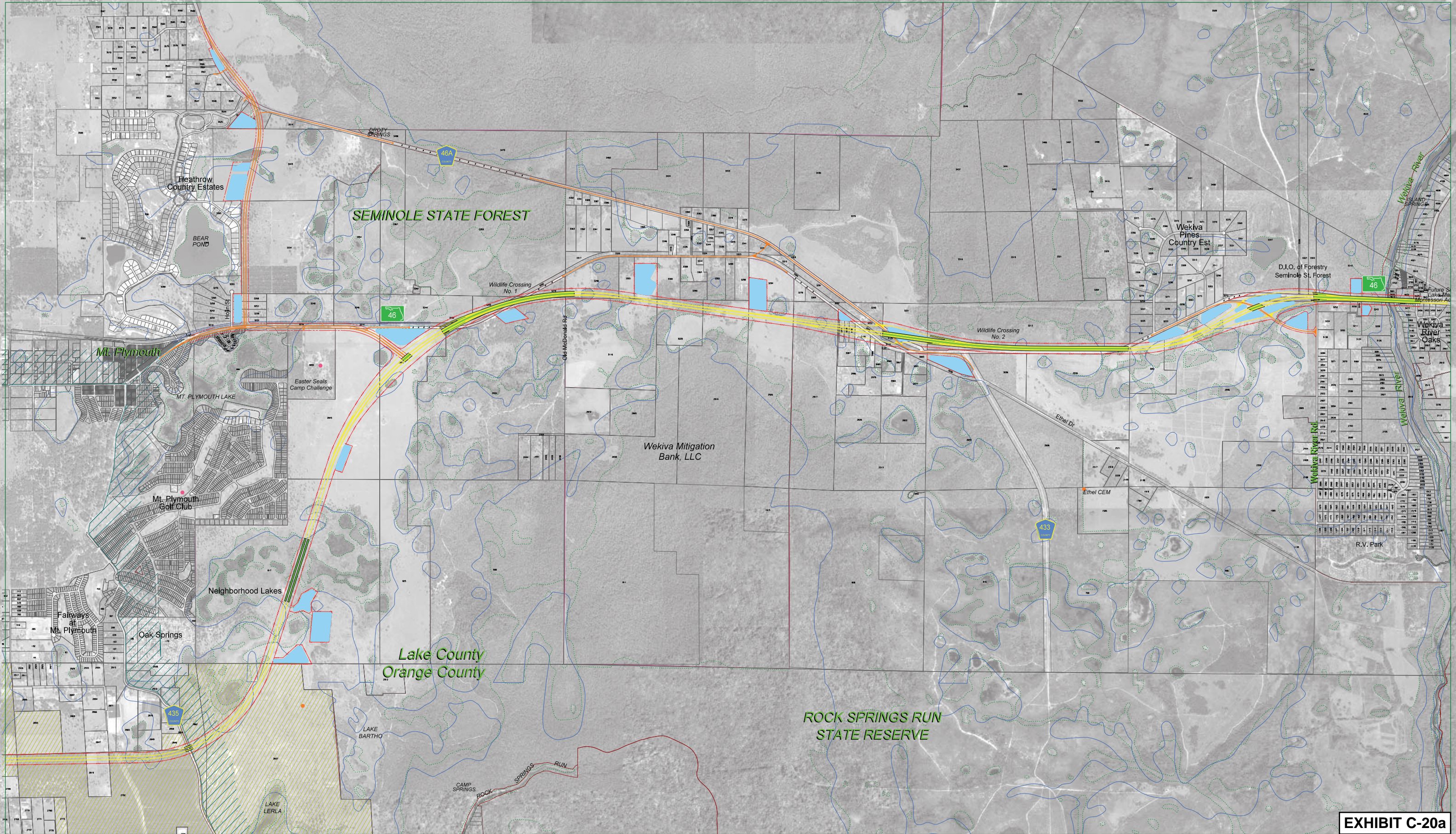
LEGEND

● COMMUNITY FACILITY SITE	▨ CITY BOUNDARY	— FLOODPLAIN BOUNDARY	— PROPOSED BRIDGE
● HISTORICAL SITE	— WEKIVA RIVER PROTECTION AREA	— WETLAND LINE	— PROPOSED LA RIGHT-OF-WAY
	— PUBLIC LAND	— EXISTING PARCEL LINE	— POTENTIAL RIGHT-OF-WAY
	— POTENTIAL PUBLIC LAND ACQUISITION	— POTENTIAL POND	— PROPERTY PARCEL CODES

225 E. Robinson Street, Suite 505
Orlando, FL 32801-4321
Tel: 407.423.0030
Cert. of Authorization No. 000072

WEKIVA PARKWAY
Project Development and Environment Study
Orange, Lake & Seminole Counties

LAKE COUNTY EAST
Local Access South Alignment
Alternative 3
(Three Full Interchanges)
Aug 14, 2006 1" = 800'



LEGEND			
●	COMMUNITY FACILITY SITE		CITY BOUNDARY
●	HISTORICAL SITE		WEKIVA RIVER PROTECTION AREA
			PUBLIC LAND
			POTENTIAL PUBLIC LAND ACQUISITION
			FLOODPLAIN BOUNDARY
			WETLAND LINE
			EXISTING PARCEL LINE
			PROPOSED BRIDGE
			PROPOSED LA RIGHT-OF-WAY
			POTENTIAL POND
			PROPERTY PARCEL CODES



LAKE COUNTY EAST
Local Access Blue Alignment
Alternative 2A
(Full Interchange)
OCTOBER 25, 2006 1" = 800'

EXHIBIT C-20a

