

EXHIBIT C-20

LEGEND

● COMMUNITY FACILITY SITE	▨ CITY BOUNDARY	— FLOODPLAIN BOUNDARY	— PROPOSED BRIDGE
● HISTORICAL SITE	— WEKIVA RIVER PROTECTION AREA	— WETLAND LINE	— PROPOSED LA RIGHT-OF-WAY
	— PUBLIC LAND	— EXISTING PARCEL LINE	— PROPOSED RIGHT-OF-WAY
	— POTENTIAL PUBLIC LAND ACQUISITION		— POTENTIAL POND
			825 PROPERTY PARCEL CODES

225 E. Robinson Street, Suite 505
Orlando, FL 32801-4321
Tel: 407.423.0030
Cert. of Authorization No. 000072

Project Development and Environment Study
Orange, Lake & Seminole Counties

LAKE COUNTY EAST
Local Access South Alignment
Alternative 2
(Three Full Interchanges)
Aug 14, 2006 1" = 800'

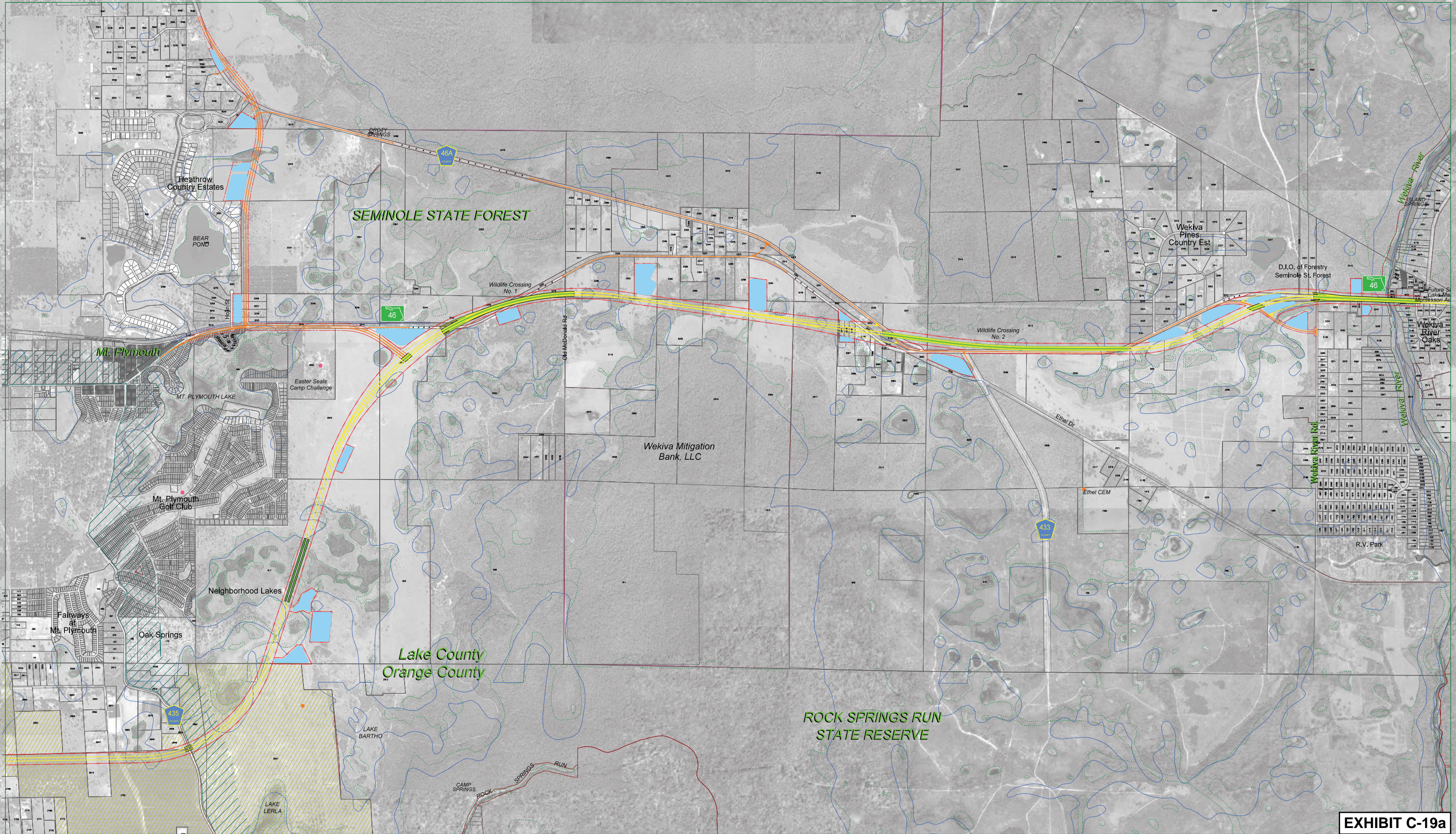
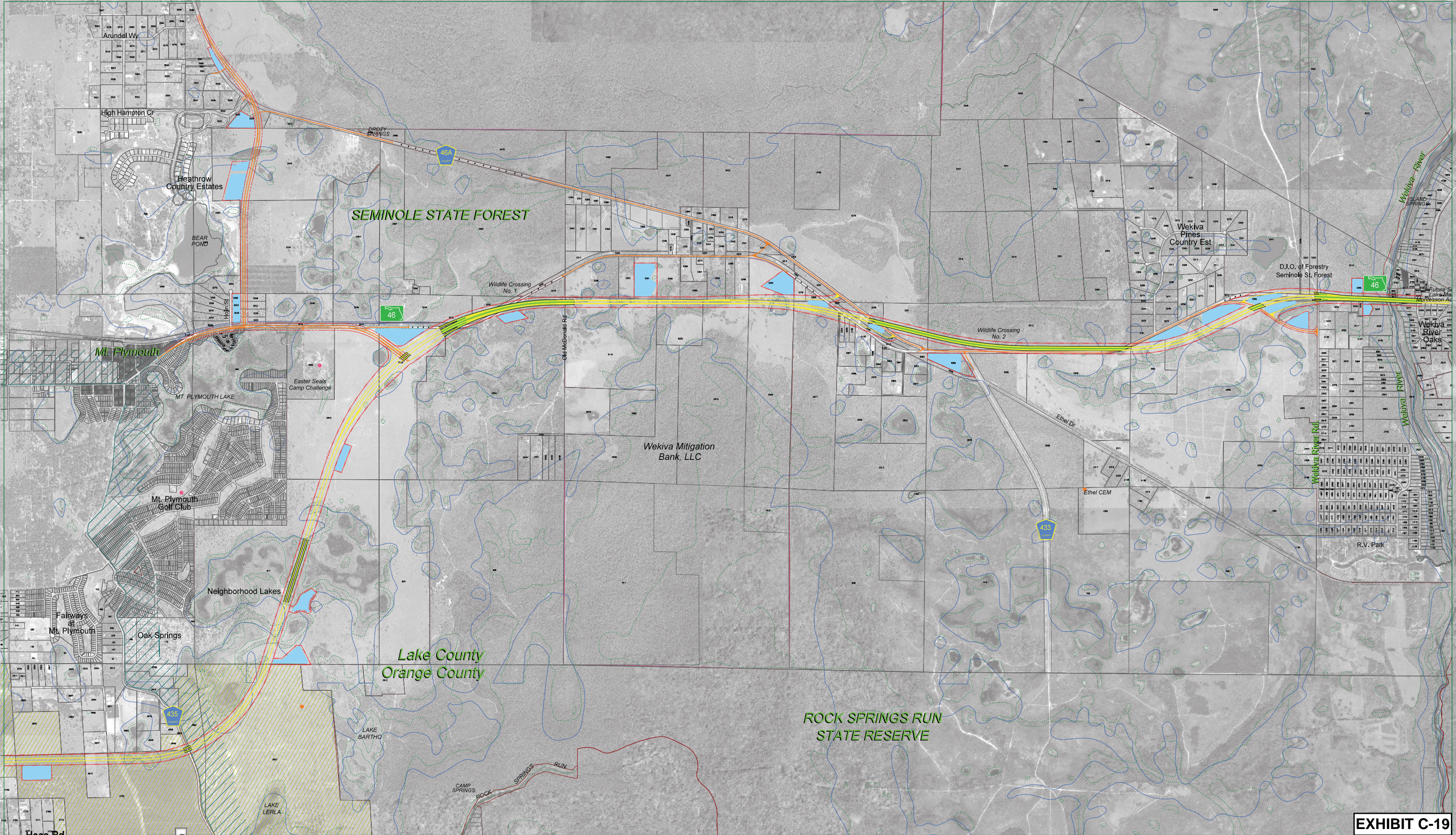


EXHIBIT C-19a

LEGEND ● COMMUNITY FACILITY SITE ● HISTORICAL SITE ▨ CITY BOUNDARY ▨ WEKIVA RIVER PROTECTION AREA ▨ PUBLIC LAND ▨ POTENTIAL PUBLIC LAND ACQUISITION — FLOODPLAIN BOUNDARY — WETLAND LINE — EXISTING PARCEL LINE — PROPOSED BRIDGE — PROPOSED LA RIGHT-OF-WAY — POTENTIAL POND — PROPERTY PARCEL CODES	 EXPRESSWAY AUTHORITY 225 E. Robinson Street, Suite 505 Orlando, FL 32801-4321 Tel: 407.423.0030 Cert. of Authorization No. 000072	 CH2MHILL 225 E. Robinson Street, Suite 505 Orlando, FL 32801-4321 Tel: 407.423.0030 Cert. of Authorization No. 000072	 WEKIVA PARKWAY Project Development and Environment Study Orange, Lake & Seminole Counties	LAKE COUNTY EAST Local Access Blue Alignment Alternative 1A (Split Diamond Interchange) OCTOBER 25, 2006 1" = 800'	 0 800 Feet
---	--	--	--	---	----------------



LEGEND

● COMMUNITY FACILITY SITE	CITY BOUNDARY	FLOODPLAIN BOUNDARY	PROPOSED BRIDGE
● HISTORICAL SITE	POTENTIAL PUBLIC LAND ACQUISITION	WETLAND LINE	PROPOSED LA RIGHT-OF-WAY
WEKIVA RIVER PROTECTION AREA	PUBLIC LAND	EXISTING PARCEL LINE	PROPOSED RIGHT-OF-WAY
			POTENTIAL POND
			PROPERTY PARCEL CODES

225 E. Robinson Street, Suite 505
Orlando, FL 32801-4321
Tel: 407-423-0030
Cert. of Authorization No. 000072

CH2MHILL

WEKIVA PARKWAY
Project Development and Environment Study
Orange, Lake & Seminole Counties

LAKE COUNTY EAST
Local Access South Alignment
Alternative 1
(Split Diamond Interchange)
Aug 14, 2006 1"= 800'

EXHIBIT C-19