

SEE CR 46A
REALIGNMENT BOARDS

ROAD CLOSED
(SEE CR 46A REALIGNMENT BOARDS)

46A
VARIETY

Heathrow
Country Estates

SEMINOLE STATE FOREST

BEAR
POND

Hollis St

46

Wildlife Crossing
No. 1

Old McDonald Rd

WILDLIFE BRIDGE

INTERCHANGE LOCATION

MT. PLYMOUTH LAKE

Easter Seals
Camp Challenge

Plymouth
Club

SEE LAKE COUNTY EAST
LOCAL ACCESS BOARDS

Neighborhood Lakes

ROCK SPRINGS RUN
STATE RESERVE

Lake County
Orange County

LAKE
BARTHO

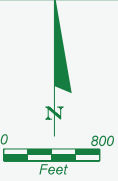
LAKE
LERLA

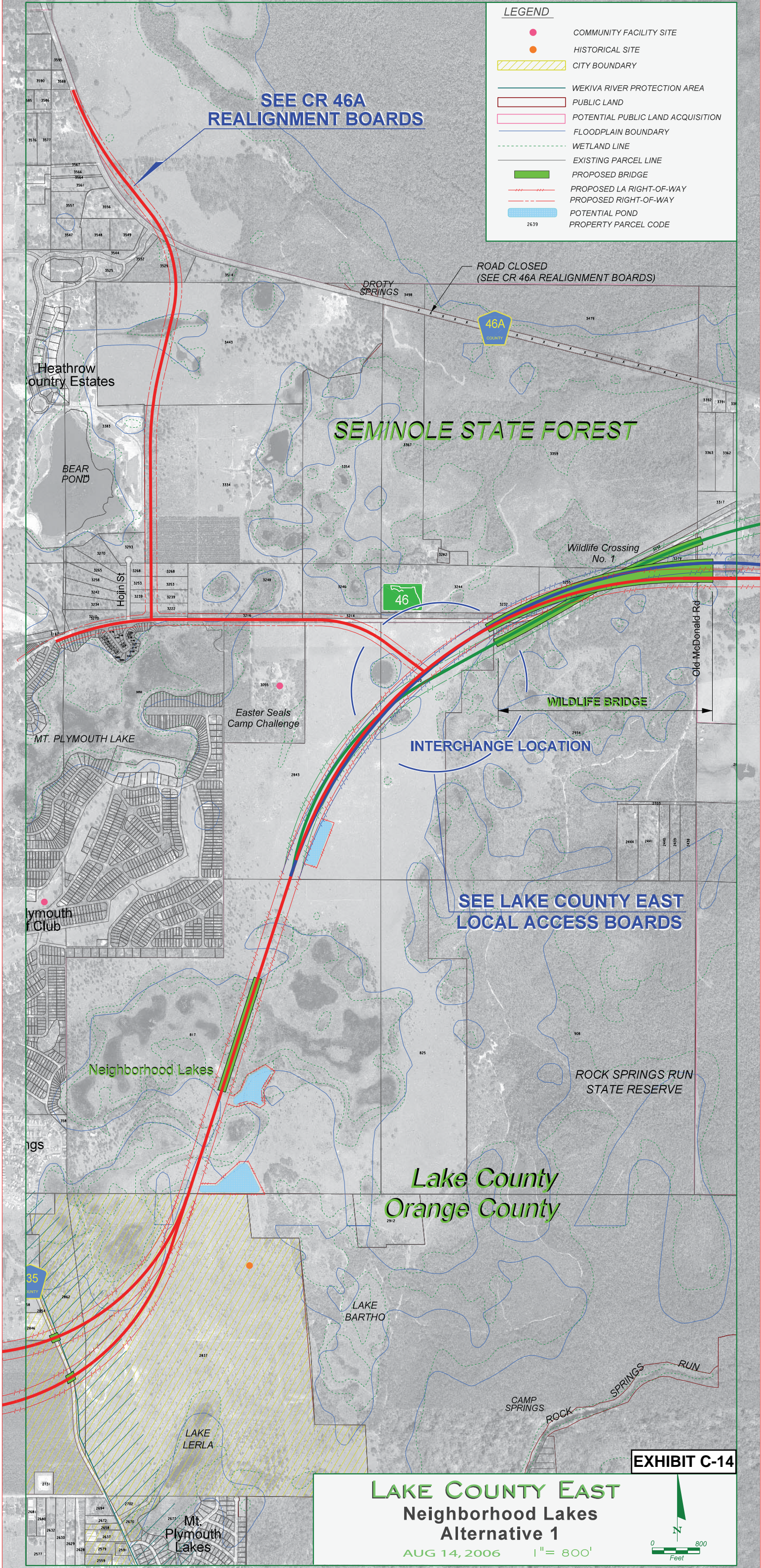
Haas Rd

Mt.
Plymouth
Lakes

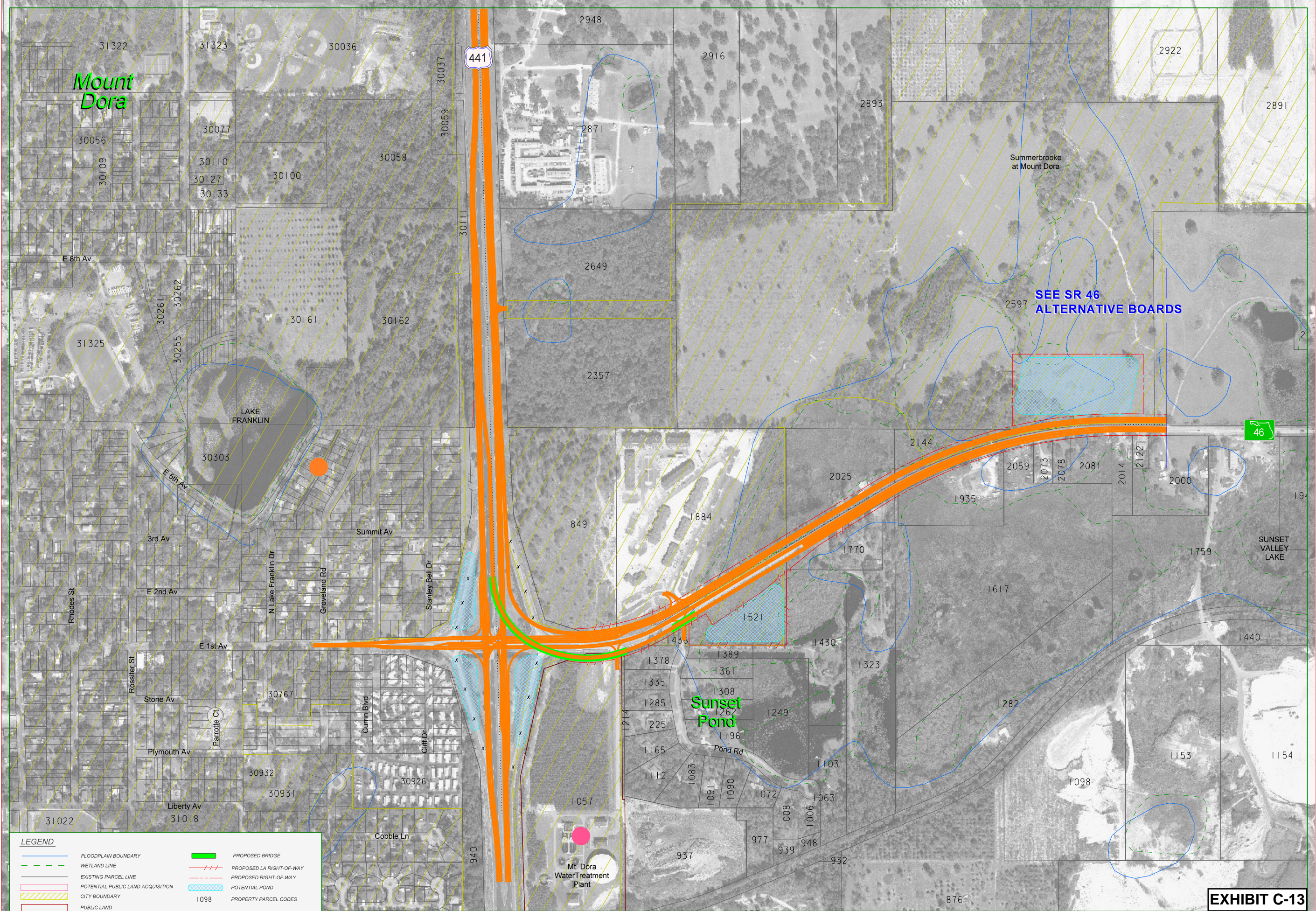
EXHIBIT C-15

LAKE COUNTY EAST
Neighborhood Lakes
Alternative 2
AUG 14, 2006 1" = 800'





Lake County West Interchange Alternatives Comparison										
Alternative	Parcel Impacts	Area Impacts (Acres)					Noise (Potential Impacts within 200' of ROW)	Preliminary Construction Cost Estimate (2006 \$)	Preliminary R/W Cost Estimate (2006 \$)	Total Preliminary Cost Estimate (2006 \$)
		Roadway	Pond	Public Land	100-Year Floodplain	Wetland	Residential Dwellings			
US 441/SR 46 Interchange Alternative 1 (Exhibit C-11)	19	10	3	1	9	7	78 (77 Dwellings within 200' of existing R/W)	71.2 M	6.0 M	77.2 M
US 441/SR 46 Interchange Alternative 2 (Exhibit C-12)	18	8	3	<1	9	7	78 (77 Dwellings within 200' of existing R/W)	53.7 M	4.8 M	58.5 M
US 441/SR 46 Interchange Alternative 3 (Exhibit C-13)	18	8	3	<1	9	7	78 (77 Dwellings within 200' of existing R/W)	50.9 M	5.3 M	56.2 M



LEGEND

	FLOODPLAIN BOUNDARY		PROPOSED BRIDGE
	WETLAND LINE		PROPOSED LA RIGHT-OF-WAY
	EXISTING PARCEL LINE		PROPOSED RIGHT-OF-WAY
	POTENTIAL PUBLIC LAND ACQUISITION		POTENTIAL POND
	CITY BOUNDARY		PROPERTY PARCEL CODES
	PUBLIC LAND		
	WEKIVA RIVER PROTECTION AREA		
	COMMUNITY FACILITY SITE		
	HISTORICAL SITE		



LAKE COUNTY WEST
US 441 / SR 46 Interchange
At Grade
Alternative 3
JUNE 25, 2006 1" = 200'

EXHIBIT C-13

