

LEGEND

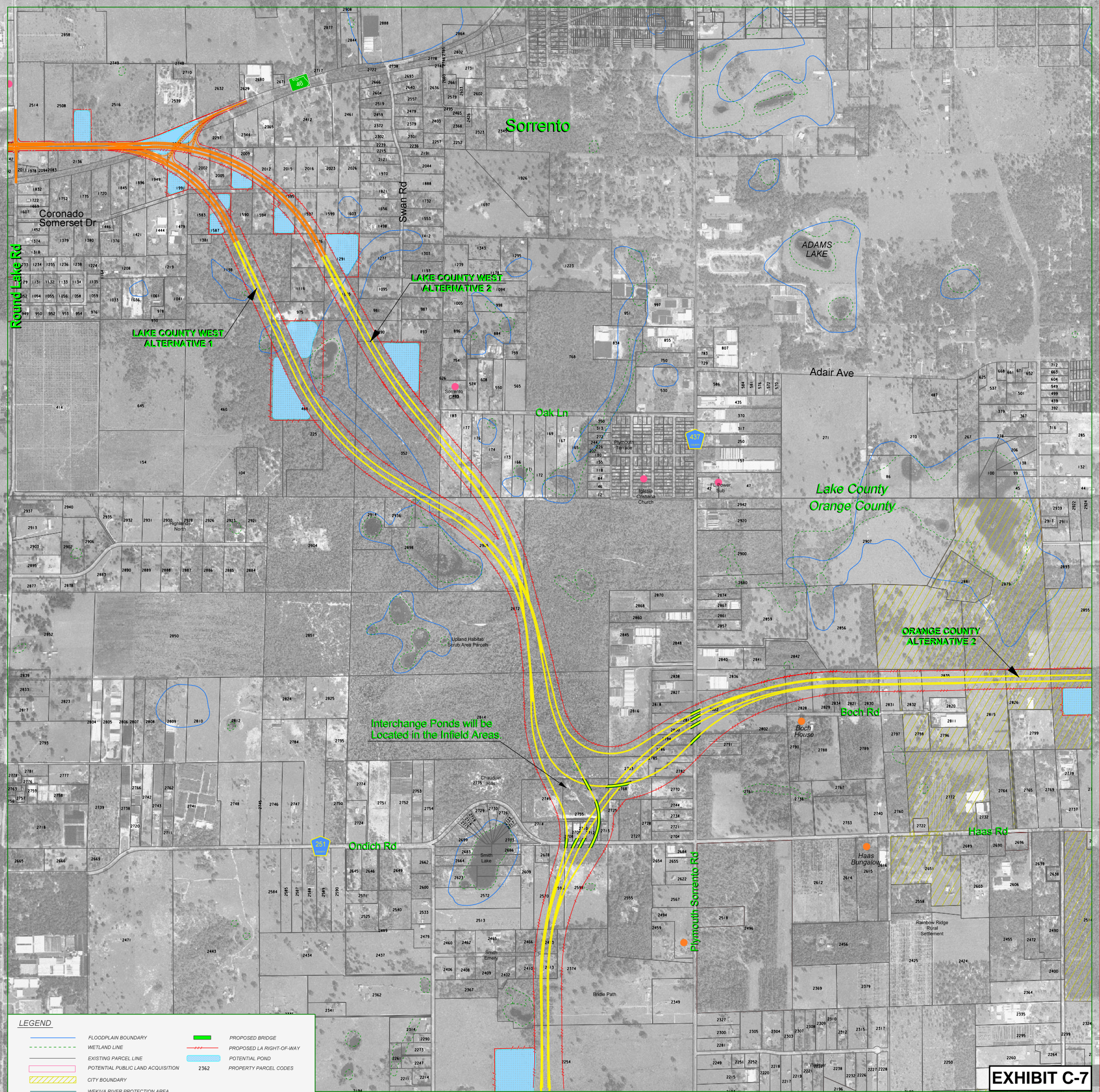
	FLOODPLAIN BOUNDARY		PROPOSED BRIDGE
	WETLAND LINE		PROPOSED LA RIGHT-OF-WAY
	EXISTING PARCEL LINE		POTENTIAL POND
	POTENTIAL PUBLIC LAND ACQUISITION		PROPERTY PARCEL CODES
	CITY BOUNDARY		
	WEKIVA RIVER PROTECTION AREA		
	PUBLIC LAND		
	COMMUNITY FACILITY SITE		
	HISTORICAL SITE		

CH2MHILL
 225 E. Robinson Street, Suite 505
 Orlando, FL 32801-4321
 Tel: 407-453-0030
 Florida License No. 000072

WEKIVA PARKWAY
 Project Development and Environment Study
 Orange, Lake & Seminole Counties

ORANGE - LAKE COUNTY
 Wekiva Parkway Systems Interchange
 Alternative 5
 JUNE 25, 2006 1" = 500'

EXHIBIT C-8



LEGEND

	FLOODPLAIN BOUNDARY		PROPOSED BRIDGE
	WETLAND LINE		PROPOSED LA RIGHT-OF-WAY
	EXISTING PARCEL LINE		POTENTIAL POND
	POTENTIAL PUBLIC LAND ACQUISITION		PROPERTY PARCEL CODES
	CITY BOUNDARY		
	WEKIVA RIVER PROTECTION AREA		
	PUBLIC LAND		
	COMMUNITY FACILITY SITE		
	HISTORICAL SITE		

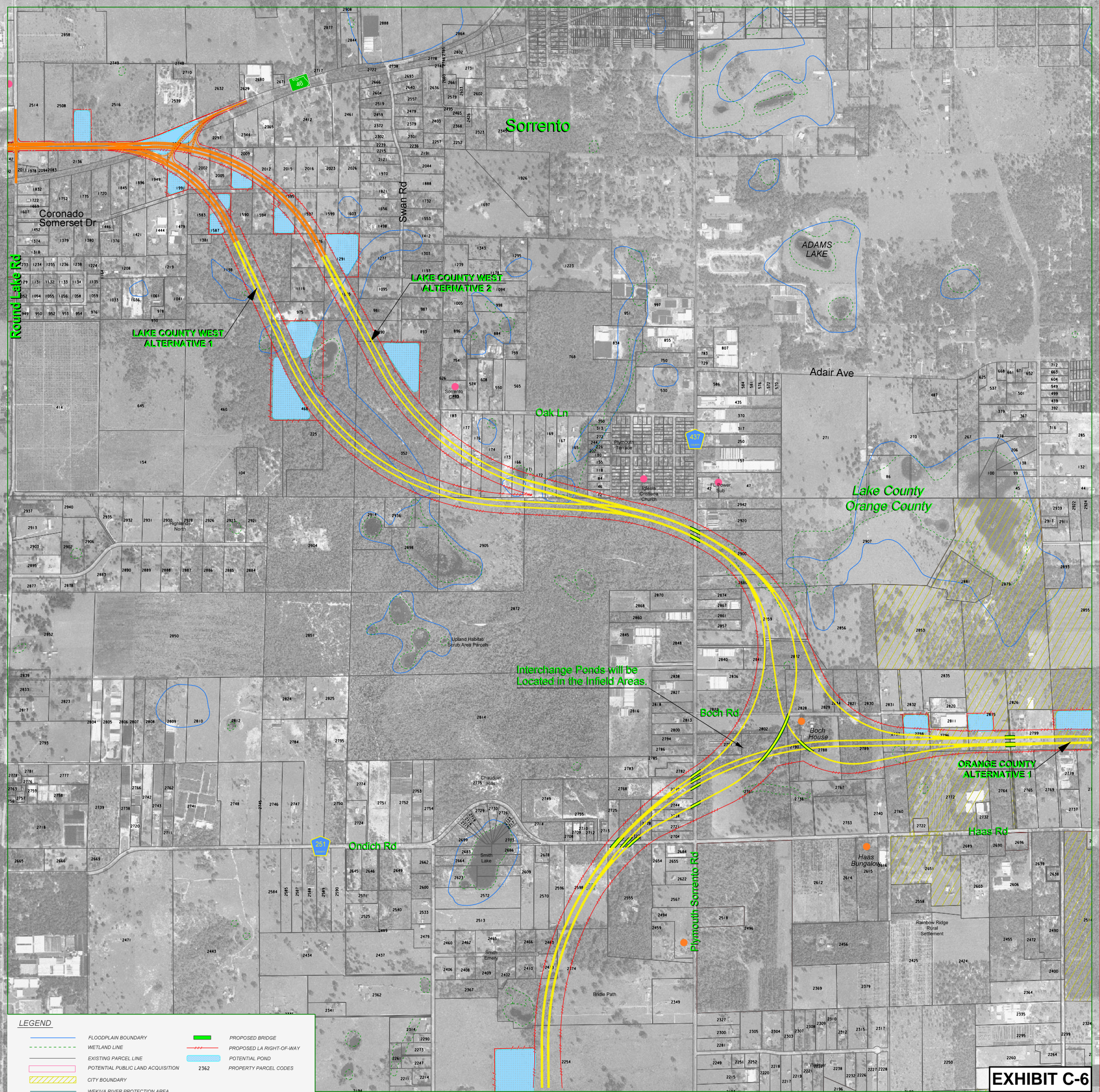
EXPRESSWAY AUTHORITY
STATE OF FLORIDA DEPARTMENT OF TRANSPORTATION
CH2MHILL

225 E. Robinson Street, Suite 505
 Orlando, FL 32801-4321
 Tel: 407-453-0030
 Florida License No. 000072

WEKIVA PARKWAY
 Project Development and Environment Study
 Orange, Lake & Seminole Counties

ORANGE - LAKE COUNTY
 Wekiva Parkway Systems Interchange
 Alternative 4
 JUNE 25, 2006 1" = 500'

EXHIBIT C-7



LEGEND

	FLOODPLAIN BOUNDARY		PROPOSED BRIDGE
	WETLAND LINE		PROPOSED LA RIGHT-OF-WAY
	EXISTING PARCEL LINE		POTENTIAL POND
	POTENTIAL PUBLIC LAND ACQUISITION		PROPERTY PARCEL CODES
	CITY BOUNDARY		
	WEKIVA RIVER PROTECTION AREA		
	PUBLIC LAND		
	COMMUNITY FACILITY SITE		
	HISTORICAL SITE		

EXPRESSWAY AUTHORITY

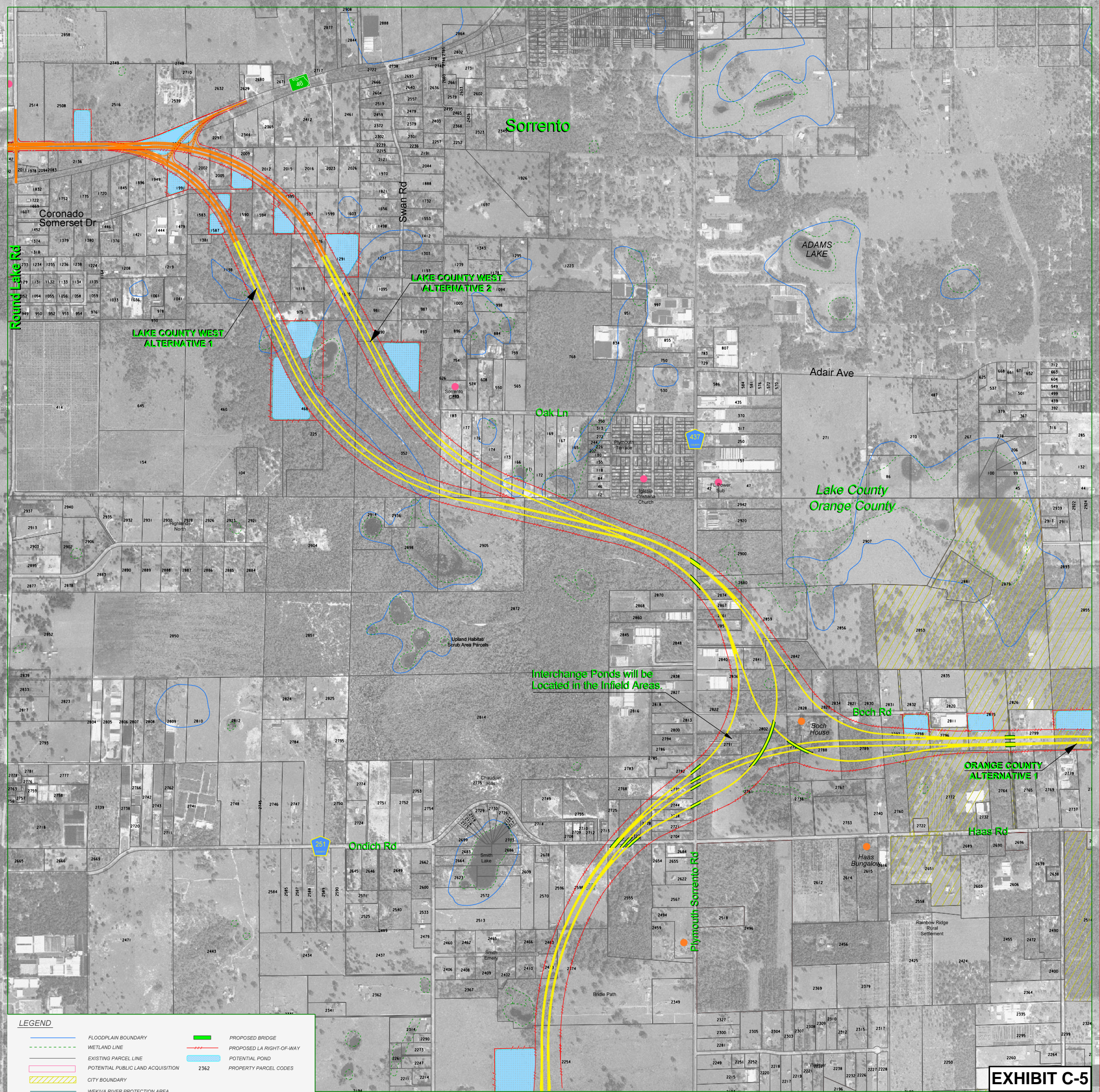
CH2MHILL
225 E. Robinson Street, Suite 505
Orlando, FL 32801-4321
Tel: 407-453-0030
Florida License No. 000072

WEKIVA PARKWAY
Project Development and Environment Study
Orange, Lake & Seminole Counties

ORANGE - LAKE COUNTY
Wekiva Parkway Systems Interchange
Alternative 3

JUNE 25, 2006 1" = 500'

EXHIBIT C-6



LEGEND

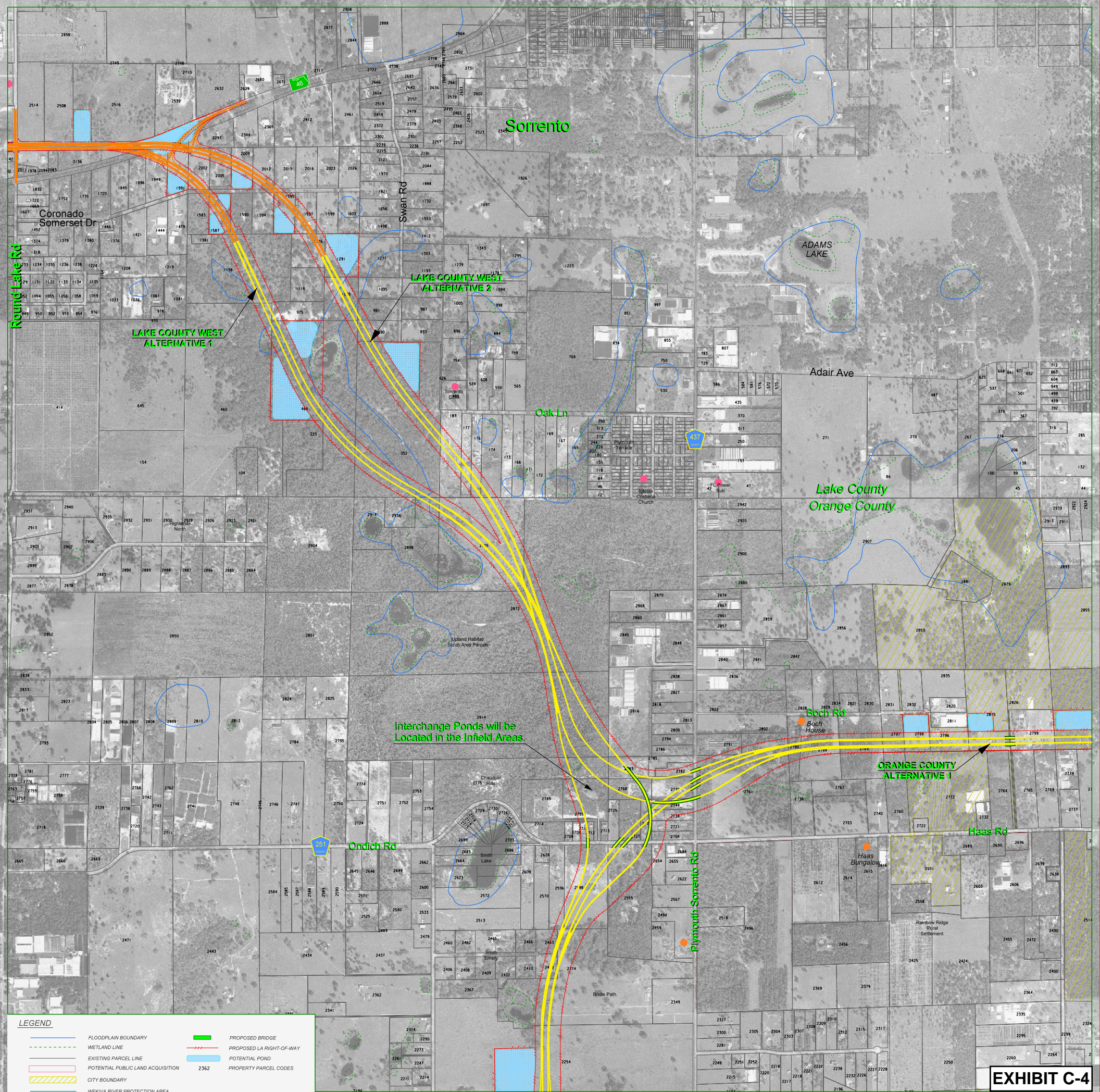
	FLOODPLAIN BOUNDARY		PROPOSED BRIDGE
	WETLAND LINE		PROPOSED LA RIGHT-OF-WAY
	EXISTING PARCEL LINE		POTENTIAL POND
	POTENTIAL PUBLIC LAND ACQUISITION		PROPERTY PARCEL CODES
	CITY BOUNDARY		
	WEKIVA RIVER PROTECTION AREA		
	PUBLIC LAND		
	COMMUNITY FACILITY SITE		
	HISTORICAL SITE		

EXPRESSWAY AUTHORITY
STATE OF FLORIDA DEPARTMENT OF TRANSPORTATION
CH2MHILL
 225 E. Robinson Street, Suite 505
 Orlando, FL 32801-4321
 Tel: 407-453-0030
 Florida License No. 000072

WEKIVA PARKWAY
 Project Development and Environment Study
 Orange, Lake & Seminole Counties

ORANGE - LAKE COUNTY
 Wekiva Parkway Systems Interchange
 Alternative 2
 JUNE 25, 2006 1" = 500'

EXHIBIT C-5



LEGEND

	FLOODPLAIN BOUNDARY		PROPOSED BRIDGE
	WETLAND LINE		PROPOSED LA RIGHT-OF-WAY
	EXISTING PARCEL LINE		POTENTIAL POND
	POTENTIAL PUBLIC LAND ACQUISITION		PROPERTY PARCEL CODES
	CITY BOUNDARY		
	WEKIVA RIVER PROTECTION AREA		
	PUBLIC LAND		
	COMMUNITY FACILITY SITE		
	HISTORICAL SITE		

CH2MHILL
 225 E. Robinson Street, Suite 505
 Orlando, FL 32801-4321
 Tel: 407-453-0030
 Florida License No. 000072

WEKIVA PARKWAY
 Project Development and Environment Study
 Orange, Lake & Seminole Counties

ORANGE - LAKE COUNTY
 Wekiva Parkway Systems Interchange
 Alternative 1
 JUNE 25, 2006 1" = 500'

EXHIBIT C-4