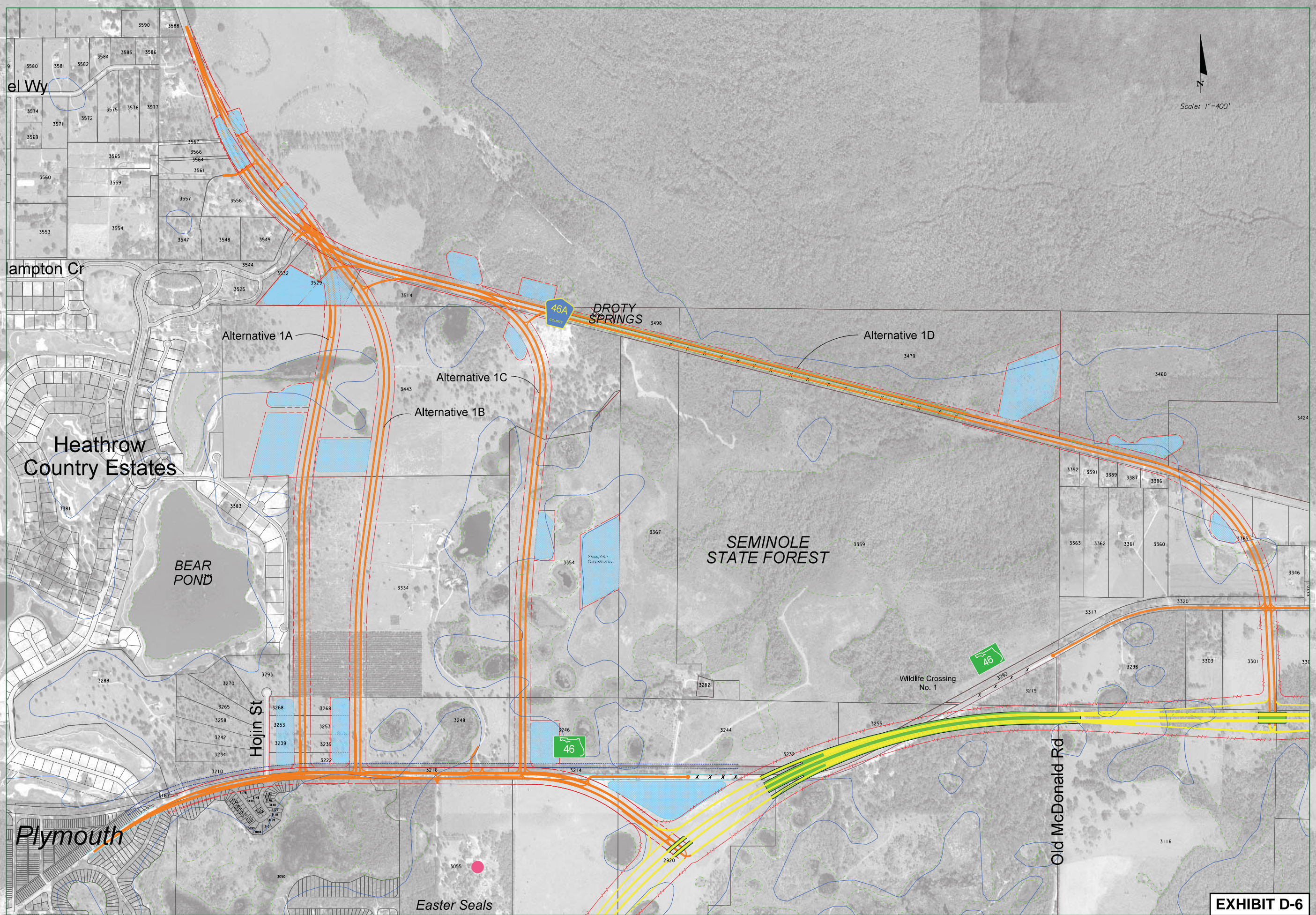


CR 46A Realignment Alternatives Comparison													
Alternative	Parcel Impacts	Area Impacts (Acres)					Displacements	Noise (Potential Impacts within 200' of ROW)		Other	Preliminary Construction Cost Estimate (2006 \$)	Preliminary R/W Cost Estimate (2006 \$)	Total Preliminary Cost Estimate (2006 \$)
		Roadway	Pond	Public Land	100-Year Floodplain	Wetland		Residential Dwellings	Parks and Conservation Areas				
Alternative 1 (North Widening) (Previously Shown in Exhibit C-17)	62	55	22	1	13	2	0	14	1 (SSF)	Impacts 1.8 acres of Camp Challenge property.	38.1 M	14.3 M	52.4 M
Alternative 2 (South Widening) (Previously Shown in Exhibit C-18)	52	54	22	0	15	2	0	14	1 (SSF)	Impacts 4.2 acres of Camp Challenge property.	38.1 M	13.2 M	51.3 M
Alternative 1A Offset 50 feet to East (Exhibit D-6)	61	55	22	1	13	2	0	14	1 (SSF)	Impacts 1.8 acres of Camp Challenge property.	38.6 M	14.6 M	53.2 M
Alternative 1B Offset 800 feet to East (Exhibit D-6)	63	56	16	1	5	2	0	1	1 (SSF)	Impacts 1.8 acres of Camp Challenge property.	38.8 M	13.9 M	52.7 M
Alternative 1C Offset 2700 feet to East (Exhibit D-6)	21	49	29	37	15	4	0	3	1 (SSF)	Impacts 1.8 acres of Camp Challenge property.	39.8 M	4.7 M	44.5 M
Alternative 1D CR 46A Modification on Existing Alignment (Bridge Alternative) (Exhibit D-6)	39	51	26	23	5	4	0	8	1 (SSF)	Impacts 1.8 acres of Camp Challenge property.	114.9 M	7.9 M	122.8 M

SSF - Seminole State Forest

Note: CR 46A Alternatives 1A, 1B, and 1C were developed based on the North Widening concept.

* For Alternatives 1, 2, and 1A, 13 of the 14 dwellings indicated to potentially be impacted by noise are located in Phase III of the Heathrow Country Estates development. The number of homes potentially impacted was estimated from the preliminary site plan obtained from Lake County Dept. of Public Works. Construction of the infrastructure is nearly complete for Phase III; however, the final plat has not been submitted.



LEGEND

	FLOODPLAIN BOUNDARY		PUBLIC LAND
	WETLAND LINE		COMMUNITY FACILITY SITE
	EXISTING PARCEL LINE		PROPOSED BRIDGE
	POTENTIAL PUBLIC LAND ACQUISITION		PROPOSED LA RIGHT-OF-WAY
	CITY BOUNDARY		PROPOSED RIGHT-OF-WAY
	WEKIVA RIVER PROTECTION AREA		POTENTIAL POND
			PROPERTY PARCEL CODES

225 E. Robinson Street, Suite 505
Orlando, FL 32801-4321
Tel 407-423-0030
Florida License No. 000072

WEKIVA PARKWAY
Project Development and Environment Study
Orange, Lake & Seminole Counties

LAKE COUNTY EAST
CR 46A Realignment
Alternatives 1A, 1B, 1C and 1D

OCTOBER 25, 2006 1" = 400'

EXHIBIT D-6