

LEGEND

	FLOODPLAIN BOUNDARY		PROPOSED BRIDGE
	WETLAND LINE		PROPOSED LA RIGHT-OF-WAY
	EXISTING PARCEL LINE		POTENTIAL POND
	POTENTIAL PUBLIC LAND ACQUISITION		PROPERTY PARCEL CODES
	CITY BOUNDARY		
	WEKIVA RIVER PROTECTION AREA		
	PUBLIC LAND		
	POTENTIAL CONTAMINATION SITE		
	COMMUNITY FACILITY SITE		
	HISTORICAL SITE		

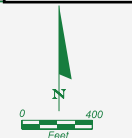
EXHIBIT D-3

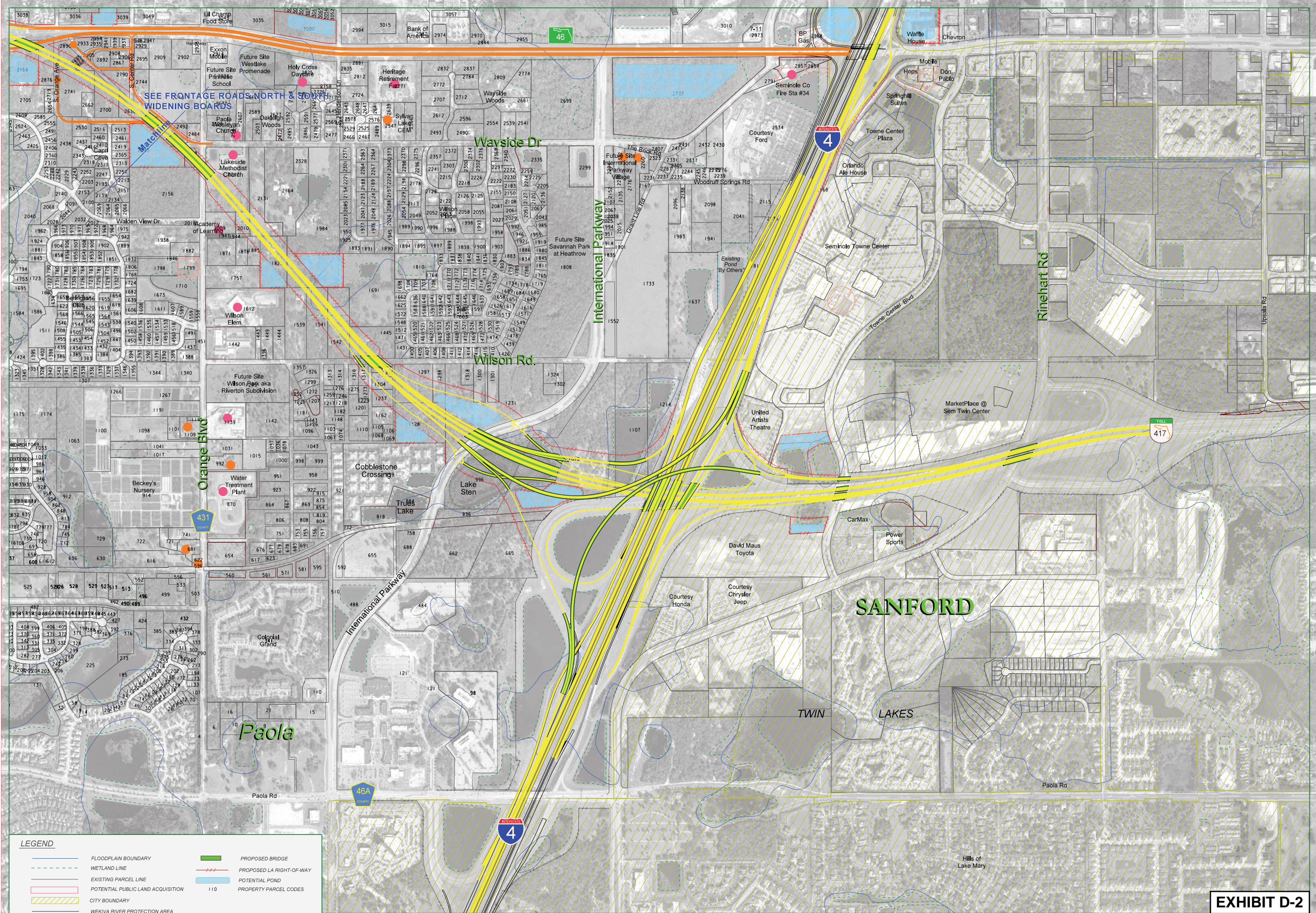


WEKIVA PARKWAY
 Project Development and Environment Study
 Orange, Lake & Seminole Counties

SEMINOLE COUNTY
 Wekiva Parkway, SR 417 / I-4
 Interchange - Alternative C

OCTOBER 25, 2006 1" = 400'





LEGEND

	FLOODPLAIN BOUNDARY		PROPOSED BRIDGE
	WETLAND LINE		PROPOSED LA RIGHT-OF-WAY
	EXISTING PARCEL LINE		POTENTIAL POND
	POTENTIAL PUBLIC LAND ACQUISITION		PROPERTY PARCEL CODES
	CITY BOUNDARY		
	WEKIVA RIVER PROTECTION AREA		
	PUBLIC LAND		
	POTENTIAL CONTAMINATION SITE		
	COMMUNITY FACILITY SITE		
	HISTORICAL SITE		

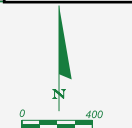
EXHIBIT D-2

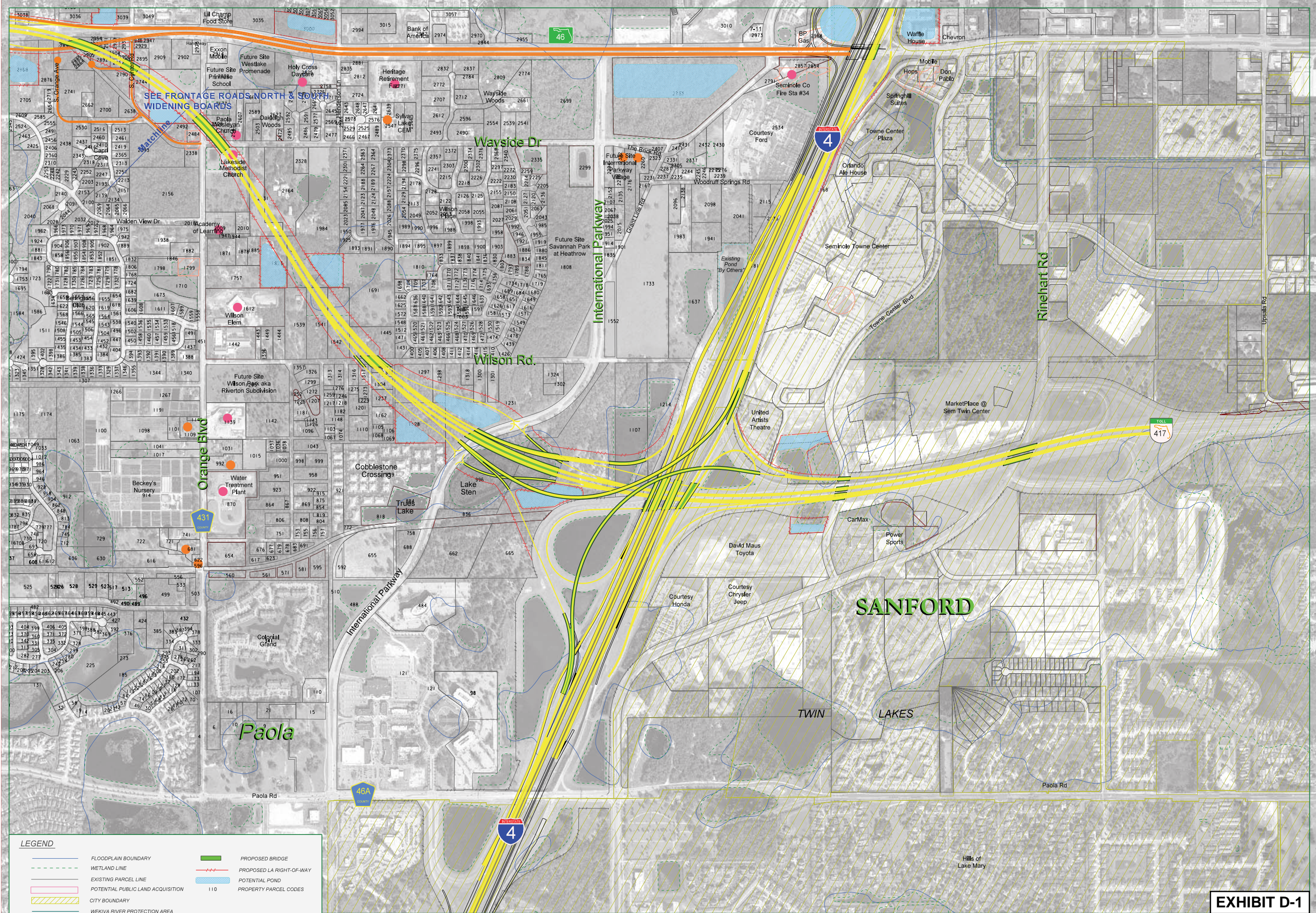


WEKIVA PARKWAY
 Project Development and Environment Study
 Orange, Lake & Seminole Counties

SEMINOLE COUNTY
 Wekiva Parkway, SR 417 / I-4
 Interchange - Alternative B

OCTOBER 25, 2006 1" = 400'





LEGEND

	FLOODPLAIN BOUNDARY		PROPOSED BRIDGE
	WETLAND LINE		PROPOSED LA RIGHT-OF-WAY
	EXISTING PARCEL LINE		POTENTIAL POND
	POTENTIAL PUBLIC LAND ACQUISITION		PROPERTY PARCEL CODES
	CITY BOUNDARY		
	WEKIVA RIVER PROTECTION AREA		
	PUBLIC LAND		
	POTENTIAL CONTAMINATION SITE		
	COMMUNITY FACILITY SITE		
	HISTORICAL SITE		

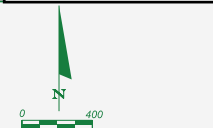
EXHIBIT D-1



WEKIVA PARKWAY
 Project Development and Environment Study
 Orange, Lake & Seminole Counties

SEMINOLE COUNTY
 Wekiva Parkway, SR 417 / I-4
 Interchange - Alternative A

OCTOBER 25, 2006 1" = 400'



**Orange County
Alignment Comparison North of Kelly Park Road**

Alternative	Parcel Impacts	Area Impacts (Acres)					Displacements			Noise (Potential Impacts within 200' of ROW)		Preliminary Construction Cost Estimate (2006 \$)	Preliminary R/W Cost Estimate (2006 \$)	Total Preliminary Cost Estimate (2006 \$)
		Roadway	Pond	Public Land	100-Year Floodplain	Wetland	Residential	Nursery	Other	Residential Dwellings	Parks and Conservation Areas			
GreenPlace Alternatives														
Alt. 3A - Western IC Alternative with Alignment 150 ft. into OC Conservation Property (Exhibit D-7)	59	222	17	19	12	3	17	1	2	8	2	172.5 M	34.8 M*	207.3 M**
Alt. 3B - Western IC Alternative with Alignment 300 ft. into OC Conservation Property (Exhibit D-8)	55	222	17	33	13	4	18	1	2	7	2	172.9 M	34.0 M*	206.9 M**
Viable Alternatives														
Western IC Alternative (Alt. 4) with Northern Alignment (OC Alt. 2) (Previously Shown in Exhibit C-7)	91	230	25	<1	16	3	21	2	1	10	2	145.7 M	46.5 M	192.2 M**
Western IC Alternative (Alt. 1) with Southern Alignment (OC Alt. 1) (Previously Shown in Exhibit C-4)	70	242	26	0	4	2	19	3	1	10	2	150.7 M	45.8 M	196.5 M

* The preliminary R/W cost estimates for Alts. 3A and 3B do not include any potential additional costs which may be associated with conservation land replacement.

** The total preliminary cost estimates for the Viable Alternatives with OC Alt. 2, Alt. 3A, and Alt. 3B do not include additional construction and right-of-way costs for maintaining access from Plymouth-Sorrento Rd. to Boch Rd. Preliminary construction costs for Alternatives 3A and 3B include a structure over a floodplain/surface water west of CR 435, which would not be needed for OC Alt. 1 or OC Alt. 2.

Limits of this Comparative Assessment:

Wekiva Parkway from north of Kelly Park Road, east to the Orange/Lake County line in Neighborhood Lakes, and;
Wekiva Parkway/SR 46 Realignment Systems Interchange and roadway, northwest to the Orange/Lake County line.