

The majority of the study area falls within unincorporated portions of Orange, Seminole and Lake Counties. The Cities of Apopka, Mount Dora, Lake Mary and Sanford are within or adjacent to the study area. Other unincorporated communities and/or major developments include: Plymouth, Tangerine, Sorrento, Mt. Plymouth, Stoneybrook, Foothills of Mount Dora, Zellwood Station, Errol Estates, Rock Springs Ridge, Heathrow Country Estates, Lake Forest, and Heathrow. In an effort to preserve and protect the historical nature, existing development patterns and community cohesiveness of rural communities, Orange County has identified several Rural Settlements and Preservation Districts including Zellwood Station, Zellwood, Tangerine, Rainbow Ridge, and North Apopka/Wekiva. Much of the remaining areas consist of low density residential, agricultural, and State owned conservation and recreation lands, including Rock Springs Run State Reserve, Seminole State Forest, and Lower Wekiva River Preserve State Park.

Foliage nurseries collectively define the unique character and identity of the City of Apopka, also known as the “Indoor Foliage Capital of the World.” The majority of the foliage nurseries are located along and east of Plymouth Sorrento Road.

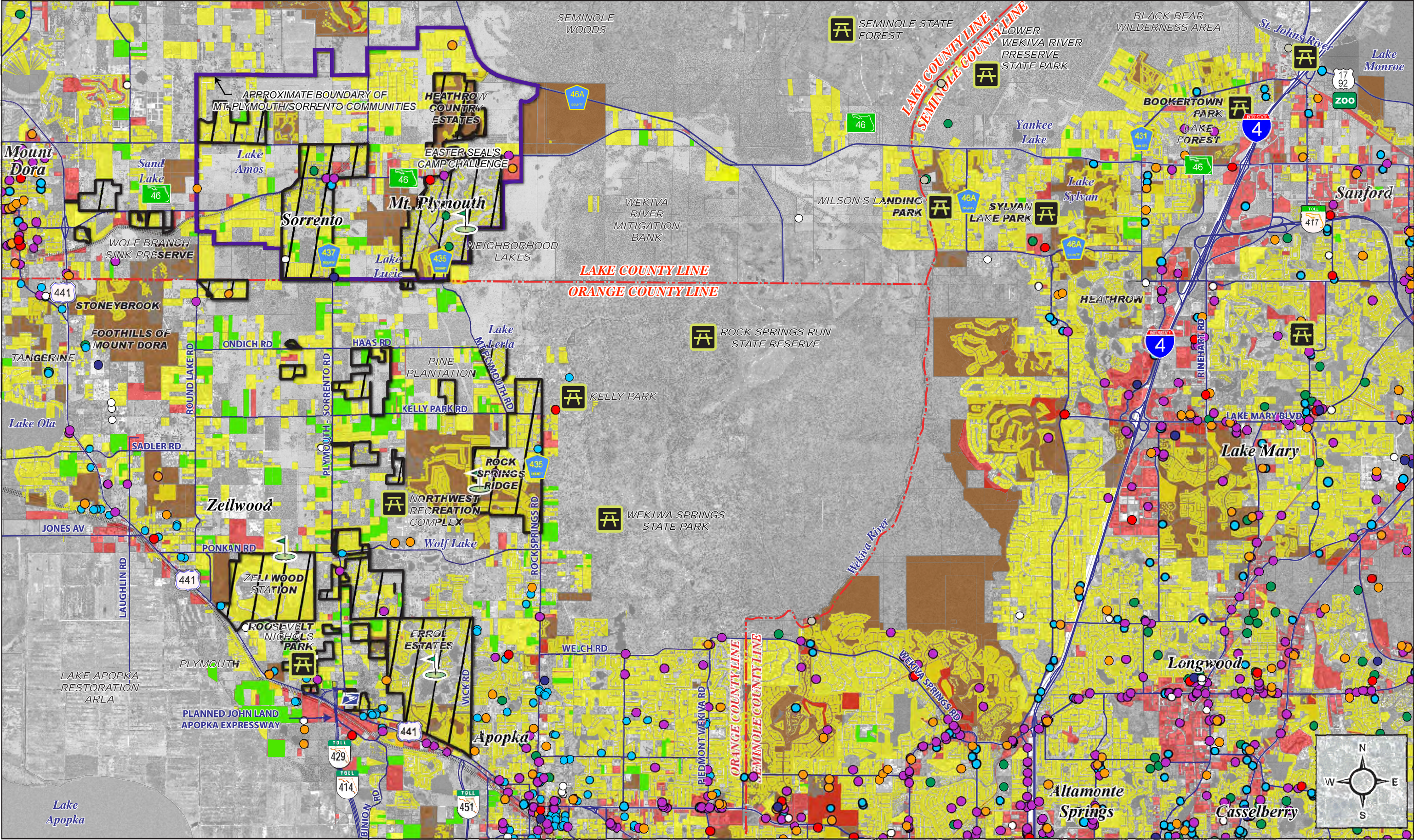
Community facilities are located throughout the study area including Wolf Lake Elementary, Wolf Lake Middle School, the Northwest Recreation Complex/Apopka Little League Park, Kelly Park/Rock Springs, Wilson’s Landing, Roosevelt Nichols Park, Lake Sylvan Park, Bookertown Park, Errol Estates Country Club golf course, and Rock Springs Ridge Golf Club.

1.2. Cultural Environment

The primary resources include several public conservation lands, proposed conservation lands, trails, parks and recreation, and historic and archaeological resources. The cultural environment resources within the study area are illustrated on **Exhibit G-3**.

The boundaries of the Wekiva River Protection Area (WRPA) extend from CR 435 in Orange County to Orange Boulevard in Seminole County. The 1988 *Wekiva River Protection Act* ensures that the rural density and character of the lands within the WRPA is preserved. The majority of the publicly held conservation and recreation lands within the study area are located within the WRPA including Kelly Park/Rock Springs, Wekiwa Springs State Park, Rock Springs Run State Reserve, Seminole State Forest, and Lower Wekiva River Preserve State Park. Vast areas of floodplains and wetlands including the Wekiva Swamp south of SR 46, and Seminole Swamp, north of SR 46 are located within the WRPA, primarily west of the Wekiva River. The Lake Apopka Restoration Area was acquired as part of the Lake Apopka Restoration Project which includes marsh and floodplain restoration to improve the water quality in Lake Apopka.

A desktop review of historical literature and data was conducted to identify any potential historic and archaeological sites within the study area. This data was updated with the examination of the Florida Master Site File and relevant Cultural Resource Assessment Survey (CRAS) reports for the study area. In accordance with the procedures contained in 36 CFR Part 800, a CRAS was completed for the PD&E Study.



LEGEND

○ Cemeteries	● Culture Centers/Churches	● Neighborhood Community Parks	■ Residential	■ Foliage & Landscape Nurseries	⛶ Parks & Recreation
○ Boat Ramps	● Law Enforcement	● Firestations	■ Commercial	⛳ Golf Courses	▨ Major Orange and Lake County Neighborhoods
	● Schools	● Social Services	■ Planned or Developing Communities	✉ Post Office	

Exhibit G-2
Social Environment