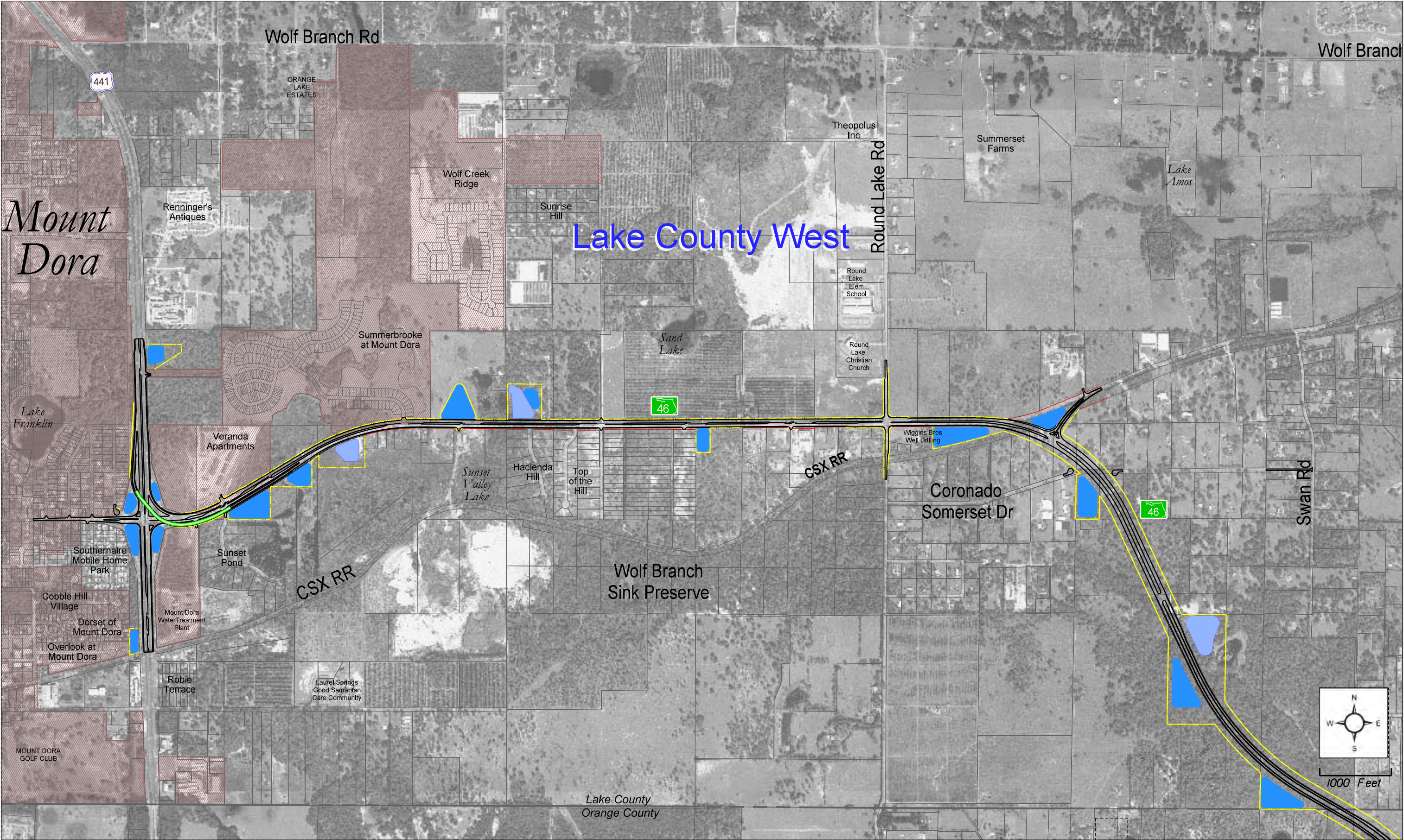


- LEGEND
- | | | | |
|--|-------------------------------|--|---------------------------|
| | Stormwater Ponds | | Proposed Bridge |
| | Floodplain Compensation Ponds | | Preferred Alternative R/W |
| | Municipal Boundaries | | Existing R/W |
| | | | Existing Parcel Line |



LEGEND

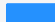


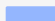
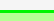


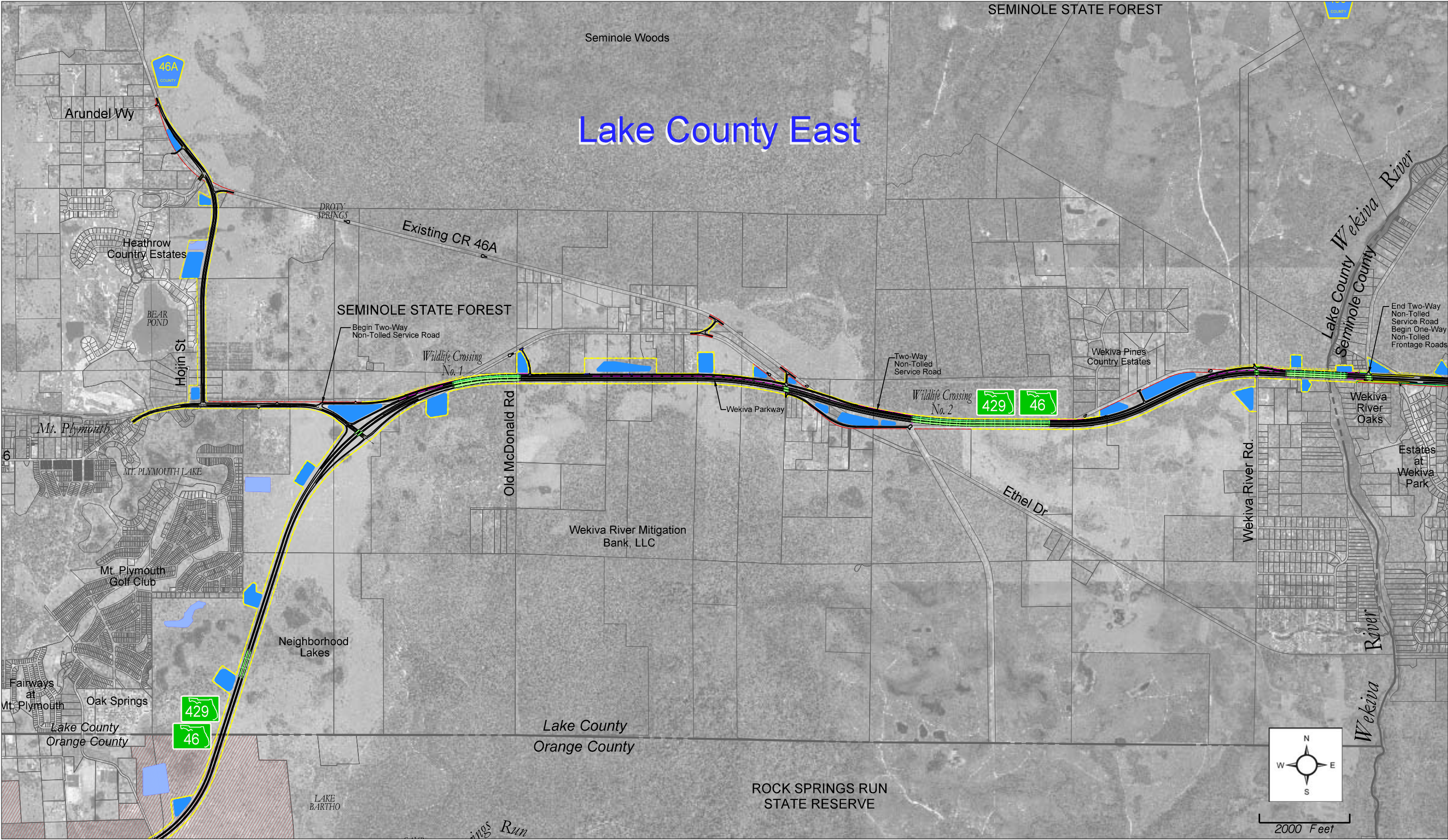
- | | | |
|--|--|---|
|  Stormwater Ponds |  Municipal Boundaries |  Preferred Alternative R/W |
|  Floodplain Compensation Ponds |  Proposed Bridge |  Existing R/W |
| | |  Existing Parcel Line |

Exhibit 1-5

Lake County West Preferred Alternative

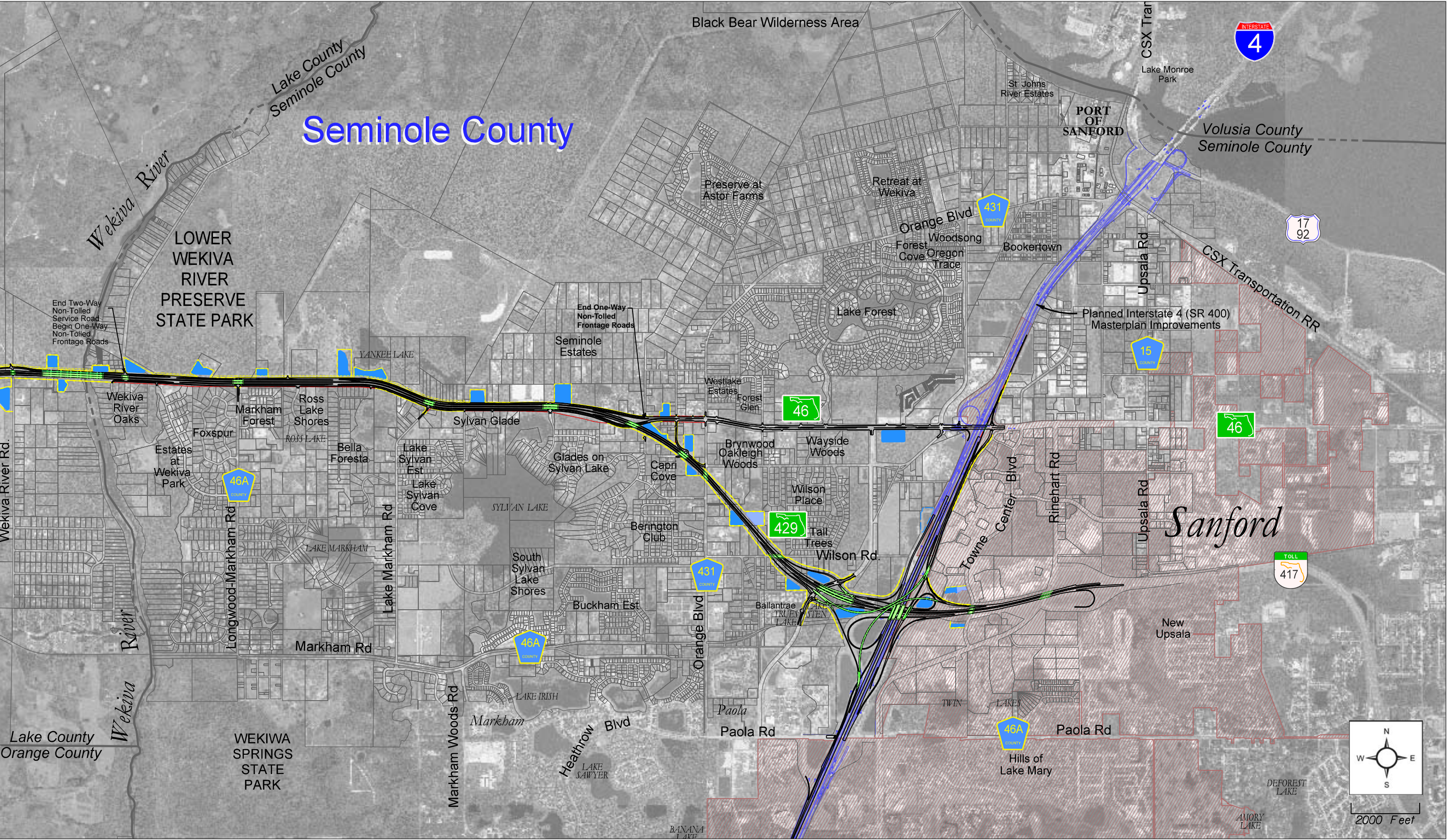




- LEGEND
- Stormwater Ponds
 - Floodplain Compensation Ponds
 - Municipal Boundaries
 - Proposed Bridge
 - Preferred Alternative R/W
 - Existing R/W
 - Existing Parcel Lines

Exhibit 1-6
Lake County East Preferred Alternative





- LEGEND**
- Stormwater Ponds
 - Floodplain Compensation Ponds
 - Municipal Boundaries
 - Proposed Bridge
 - Preferred Alternative R/W
 - Existing R/W
 - Existing Parcel Lines

Exhibit 1-7
Seminole County Preferred Alternative

