

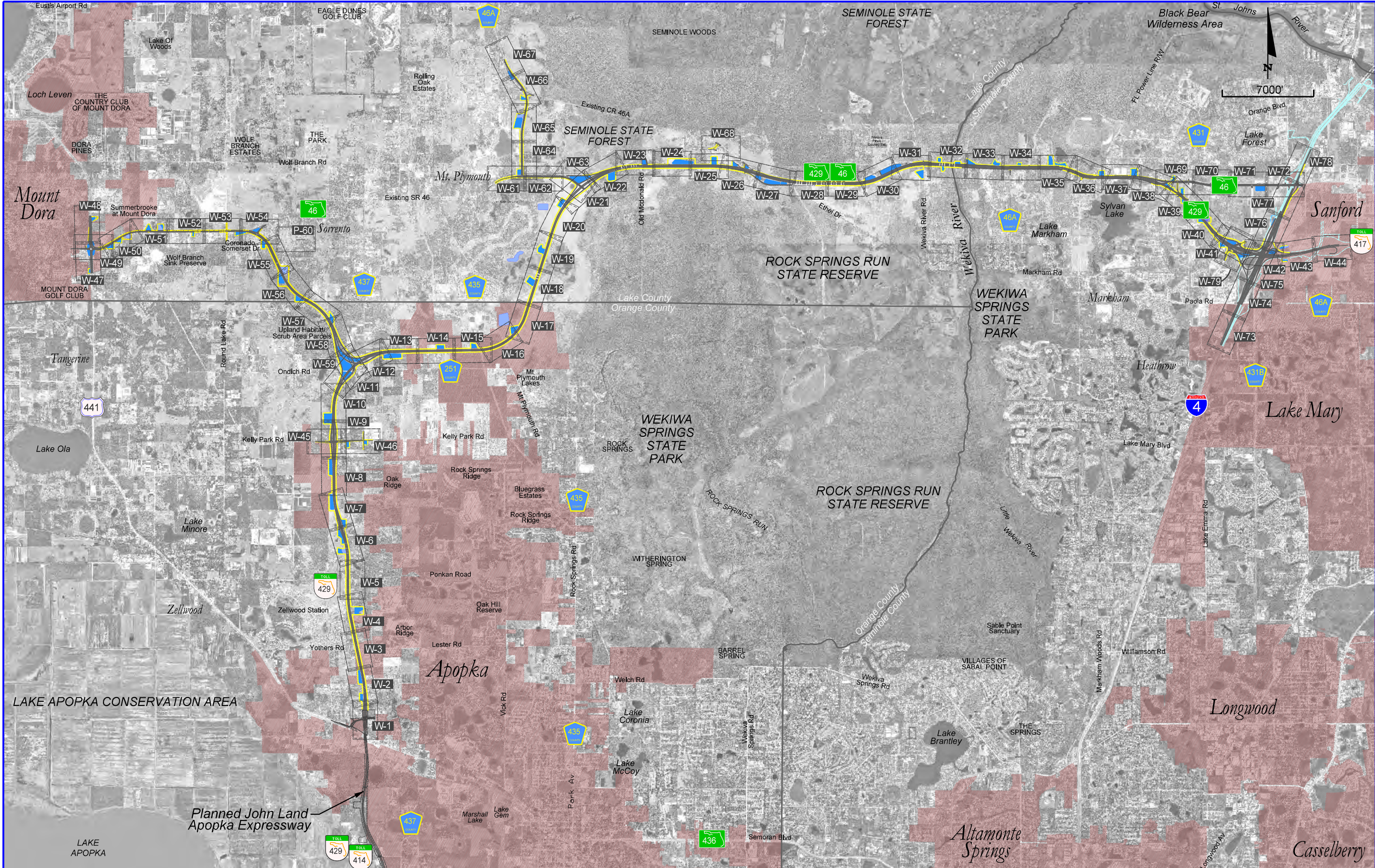
UPDATED FINAL REPORT
WETLAND EVALUATION REPORT
for the
WEKIVA PARKWAY (SR 429)/SR 46 REALIGNMENT PD&E STUDY

APPENDIX A
EXISTING CONDITIONS ON PROJECT AERIALS

Prepared by



JUNE 2010



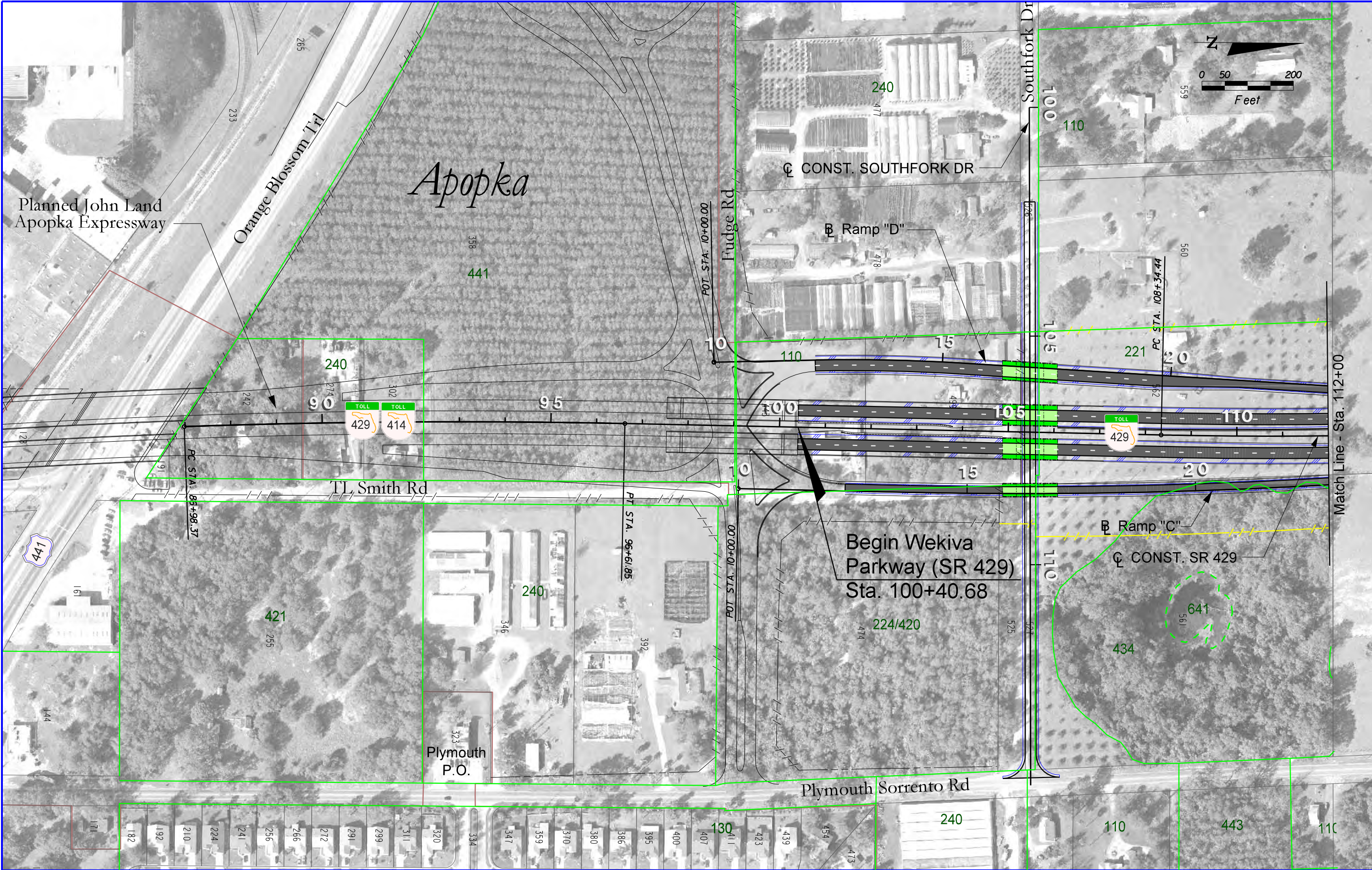
LEGEND		KEY MAP 	 EXPRESSWAY AUTHORITY	 STATE OF FLORIDA DEPARTMENT OF TRANSPORTATION DISTRICT FIVE	 WEKIWA PARKWAY Project Development and Environment Study Orange, Lake & Seminole Counties	Wekiwa Parkway (SR 429) / SR 46 Realignment		SHEET NO.
PREFERRED ALTERNATIVE EXISTING CONDITIONS						WL-1		
Index of Plan Sheets								


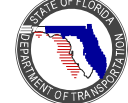

\$USER\$

\$DATE\$

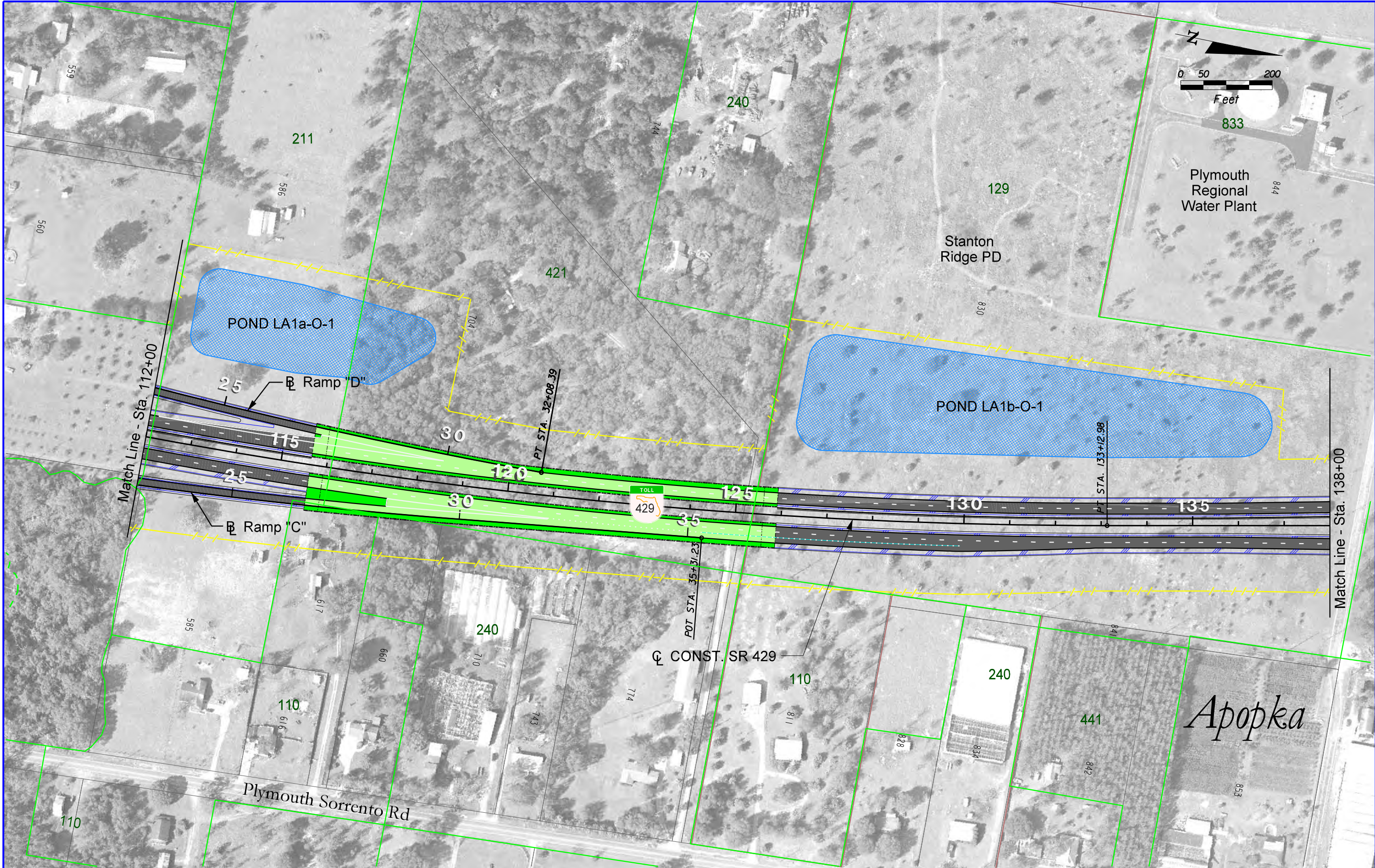
\$TIME\$


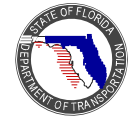
\$FILE\$



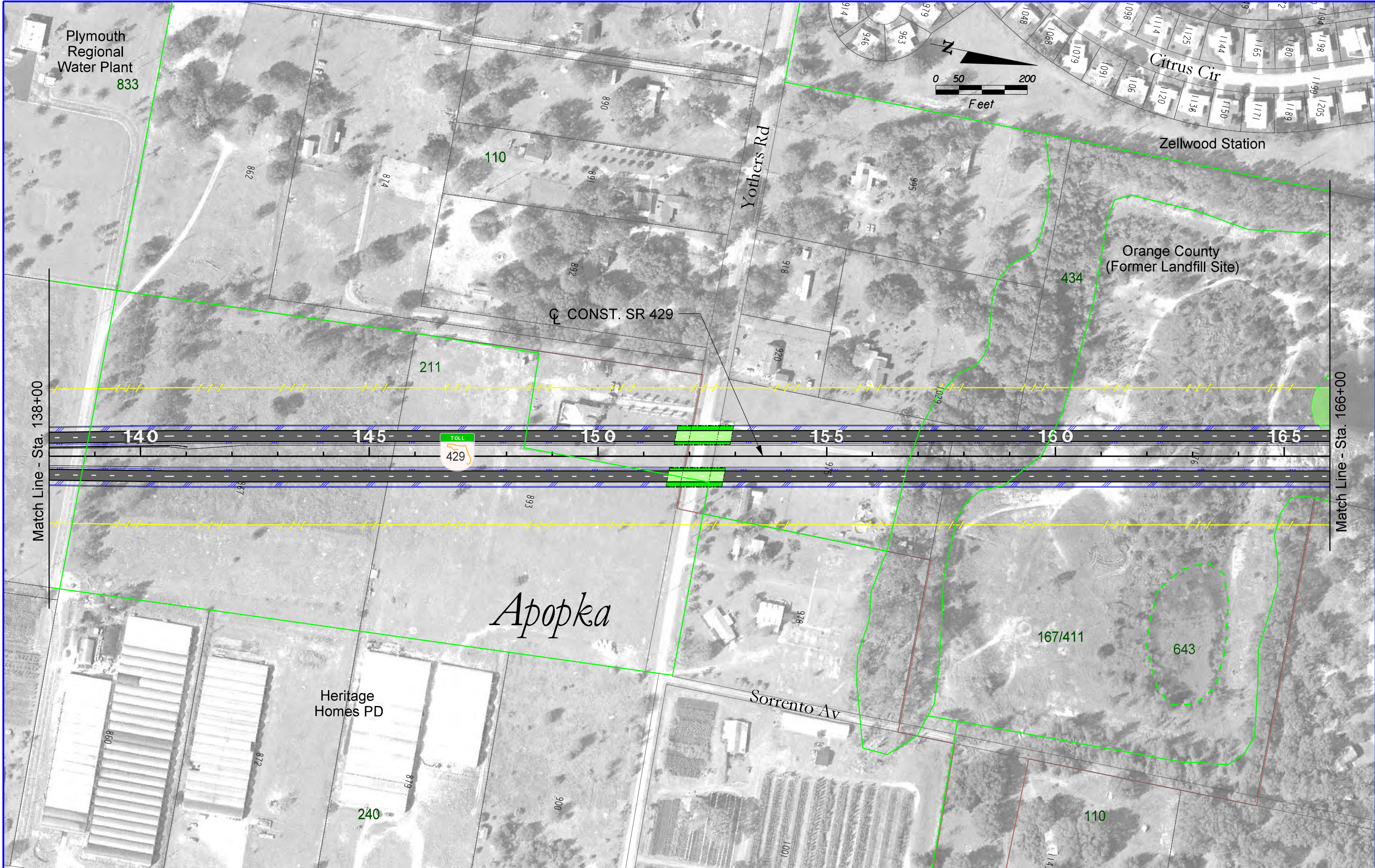
LEGEND		KEY MAP								Wekiva Parkway (SR 429) / SR 46 Realignment		SHEET NO.	
W-59 630 FLUCFCS FLUCFCS BOUNDARIES WETLAND IMPACTED AREAS		MUNICIPAL BOUNDARIES STORMWATER PONDS 3802 PARCEL CODES PAVEMENT TO BE REMOVED								PREFERRED ALTERNATIVE EXISTING CONDITIONS		W-1	
										STA. 100+40.68 - STA. 112+00			

perkins 6/9/2010 11:17:24 AM P:\Transportation\Cadpro\324\26\wetlands\PLAN\LOI.dgn



LEGEND W-59 630 WETLAND BOUNDARIES WETLAND ID NUMBERS FLUCFCS FLUCFCS BOUNDARIES WETLAND IMPACTED AREAS		KEY MAP MUNICIPAL BOUNDARIES STORMWATER PONDS 3602 PARCEL CODES PAVEMENT TO BE REMOVED		  WEKIVA PARKWAY Project Development and Environment Study Orange, Lake & Seminole Counties		Wekiva Parkway (SR 429) / SR 46 Realignment PREFERRED ALTERNATIVE EXISTING CONDITIONS STA. 112+00 - STA. 138+00		SHEET NO. W-2
---	--	--	--	--	--	---	--	------------------

perkins 6/9/2010 11:17:45 AM P:\Transportation\Cadpro\324\26\wetlands\PLANW102.dgn

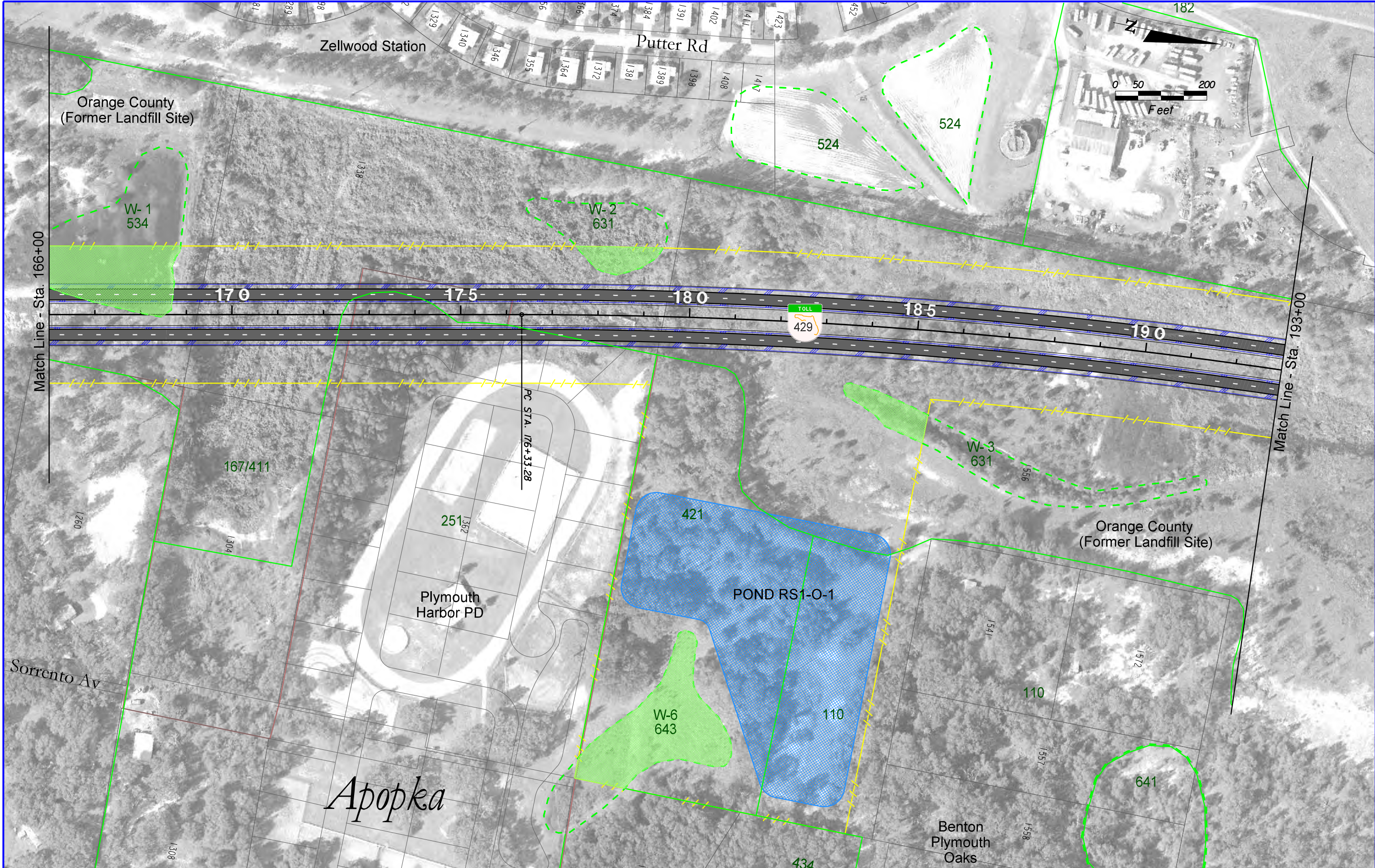


LEGEND		KEY MAP 	 EXPRESSWAY AUTHORITY	 DISTRICT FIVE	 WEKIVA PARKWAY Project Development and Environment Study Orange, Lake & Seminole Counties	Wekiva Parkway (SR 429) / SR 46 Realignment		SHEET NO.
PREFERRED ALTERNATIVE EXISTING CONDITIONS								
STA. 138+00 - STA. 166+00						W-3		

W-59 630
WETLAND ID NUMBERS
FLUCFCS
FLUCFCS BOUNDARIES
WETLAND IMPACTED AREAS

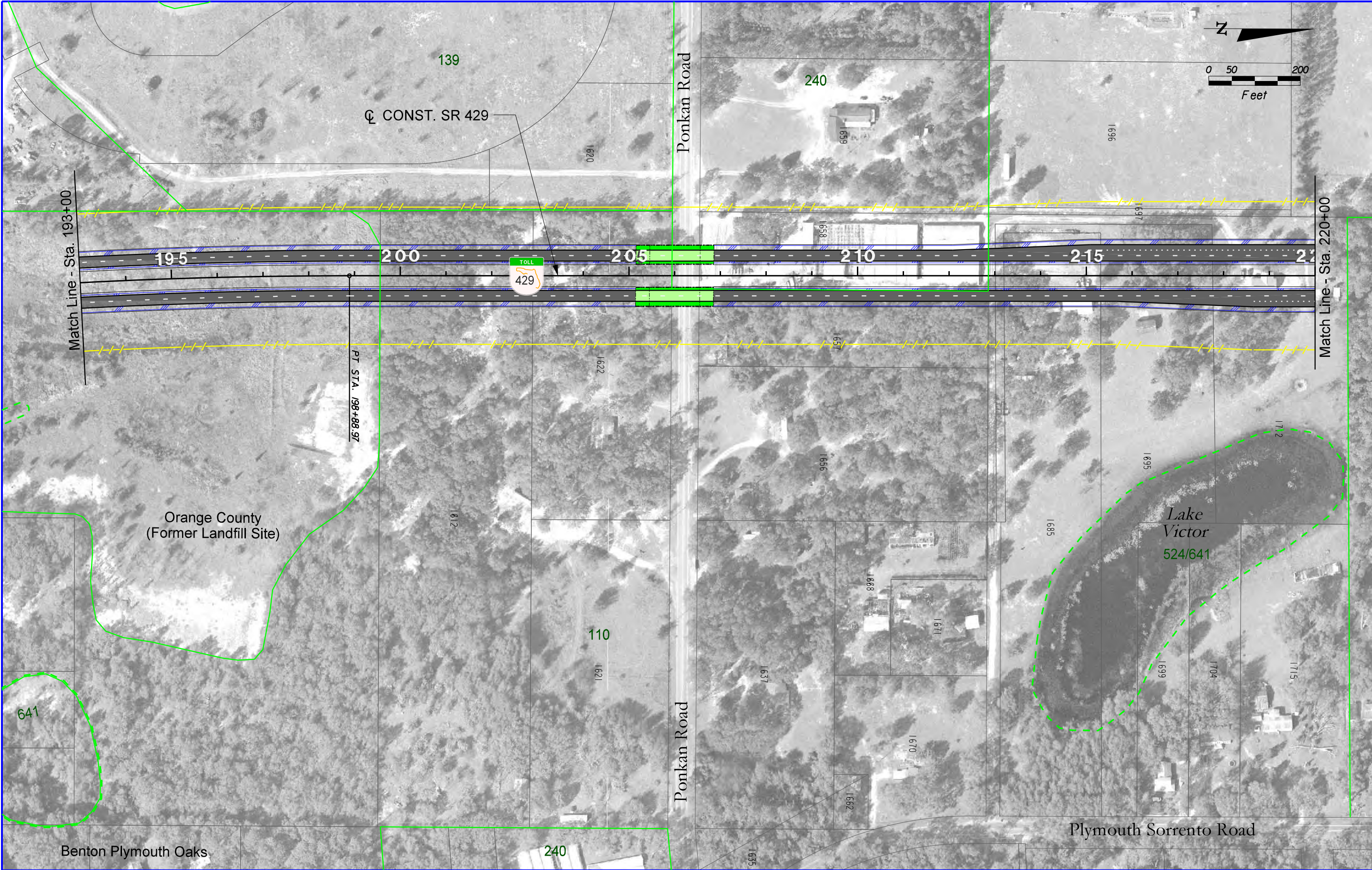
MUNICIPAL BOUNDARIES
STORMWATER PONDS
3602
PARCEL CODES
PAVEMENT TO BE REMOVED

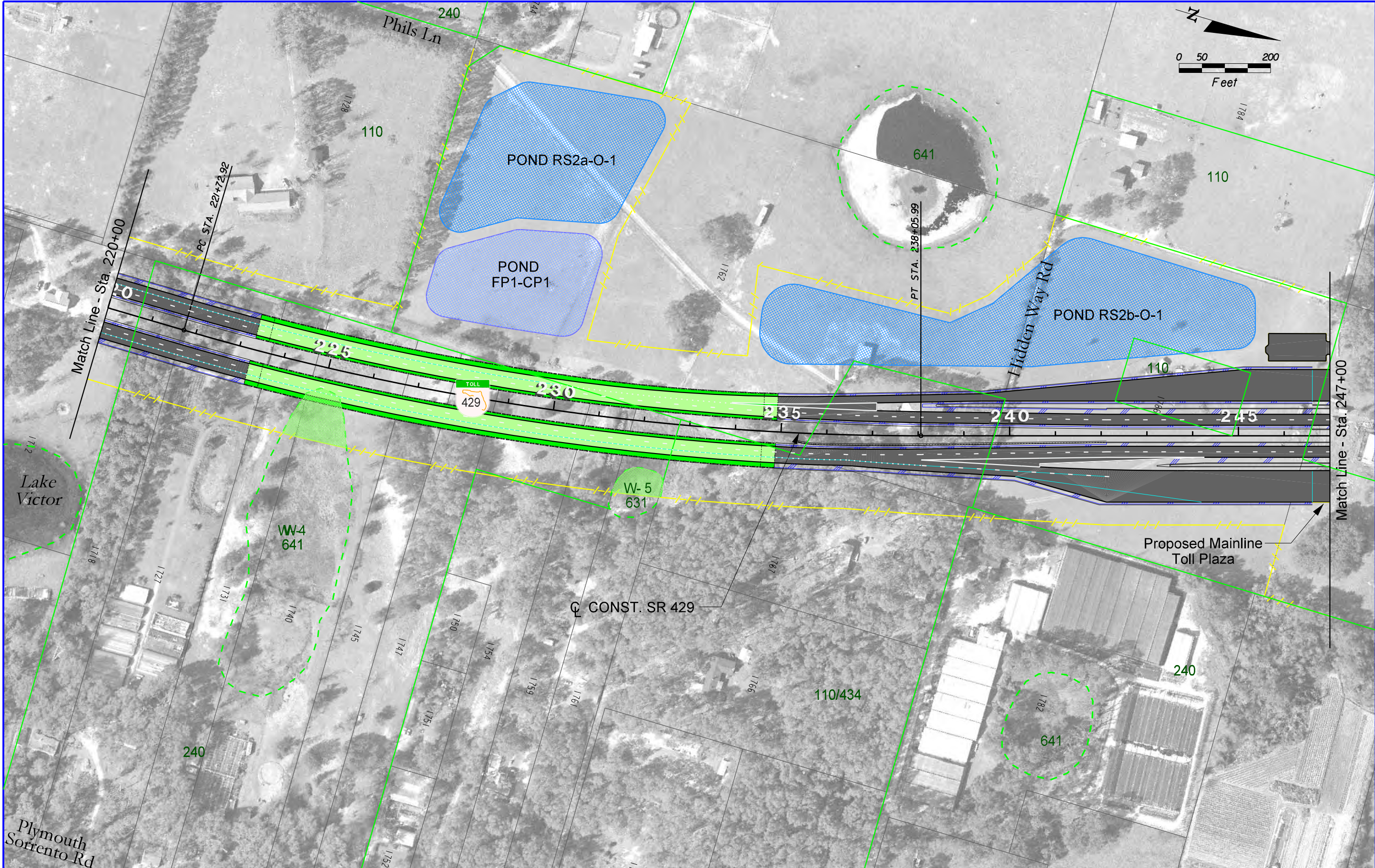
6/9/2010 11:18:04 AM P:\Transportation\Cadpro\324\26\wetlands\PLAN\WLO3.dgn



LEGEND W-59 630 WETLAND ID NUMBERS FLUCFCS FLUCFCS BOUNDARIES WETLAND IMPACTED AREAS		MUNICIPAL BOUNDARIES STORMWATER PONDS PARCEL CODES PAVEMENT TO BE REMOVED		KEY MAP 		 Project Development and Environment Study Orange, Lake & Seminole Counties		Wekiva Parkway (SR 429) / SR 46 Realignment PREFERRED ALTERNATIVE EXISTING CONDITIONS STA. 166+00 - STA. 193+00		SHEET NO. W-4	
---	--	---	--	--------------------	--	---	--	---	--	------------------	--

6/9/2010 11:18:26 AM P:\Transportation\Cadpro\324126\wetlands\PLANW104.dgn



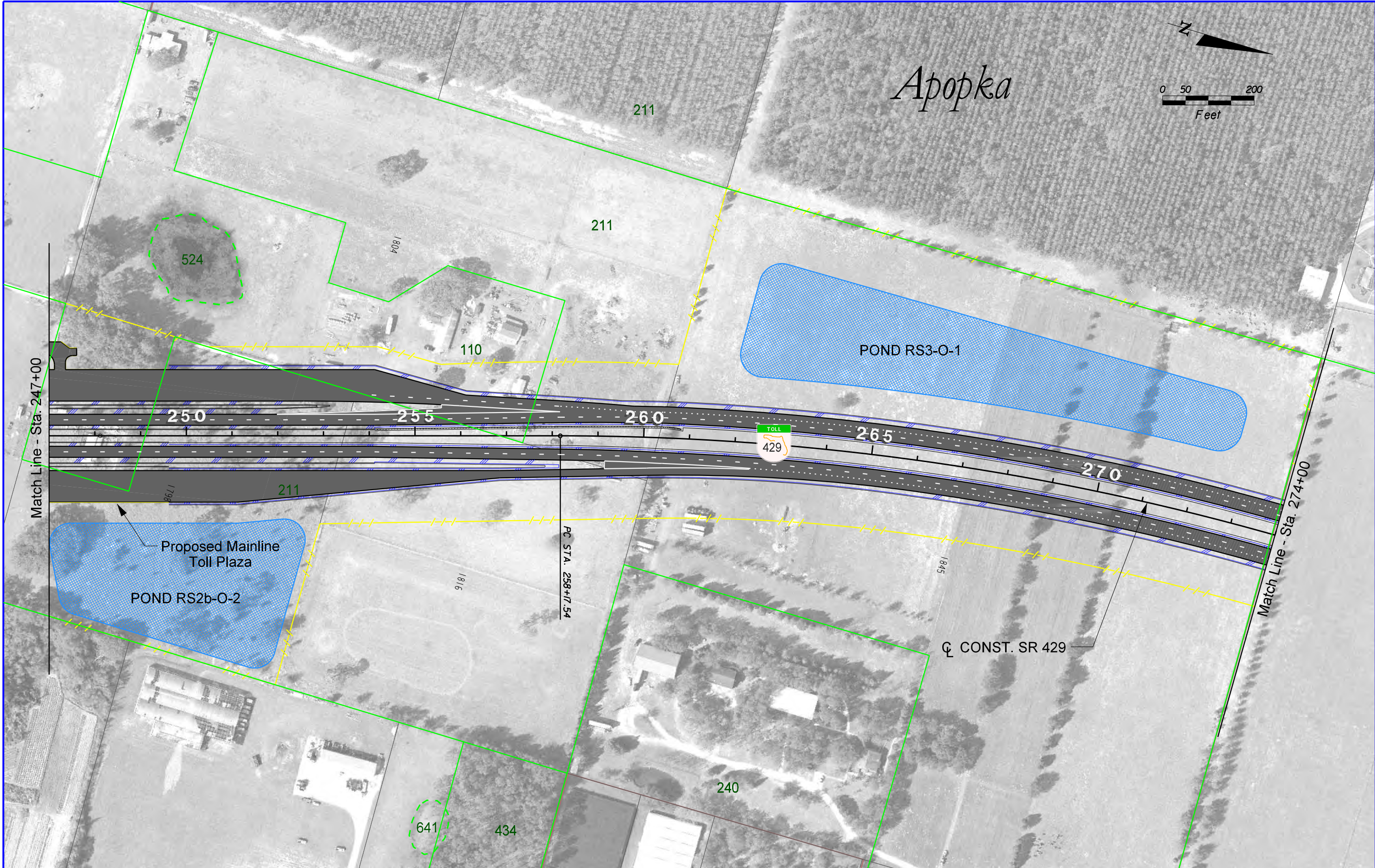


LEGEND		KEY MAP 	 EXPRESSWAY AUTHORITY	 DISTRICT FIVE	 WEKIVA PARKWAY Project Development and Environment Study Orange, Lake & Seminole Counties	Wekiva Parkway (SR 429) / SR 46 Realignment		SHEET NO.
PREFERRED ALTERNATIVE EXISTING CONDITIONS								
STA. 220+00 - STA. 274+00						W-6		

W-59 630
WETLAND BOUNDARIES
WETLAND ID NUMBERS
FLUCFCS
FLUCFCS BOUNDARIES
WETLAND IMPACTED AREAS

MUNICIPAL BOUNDARIES
STORMWATER PONDS
3802
PARCEL CODES
PAVEMENT TO BE REMOVED

6/9/2010 11:19:03 AM
P:\Transportation\Cadpro\324\26\wetlands\PLANWLO6.dgn



LEGEND		KEY MAP 	 EXPRESSWAY AUTHORITY	 DISTRICT FIVE	 WEKIVA PARKWAY Project Development and Environment Study Orange, Lake & Seminole Counties	Wekiva Parkway (SR 429) / SR 46 Realignment		SHEET NO.
PREFERRED ALTERNATIVE						W-7		
EXISTING CONDITIONS								
STA. 247+00 - STA. 274+00								

W-59

630

WETLAND BOUNDARIES

WETLAND ID NUMBERS

FLUCFCS

FLUCFCS BOUNDARIES

WETLAND IMPACTED AREAS

3802

X

MUNICIPAL BOUNDARIES

STORMWATER PONDS

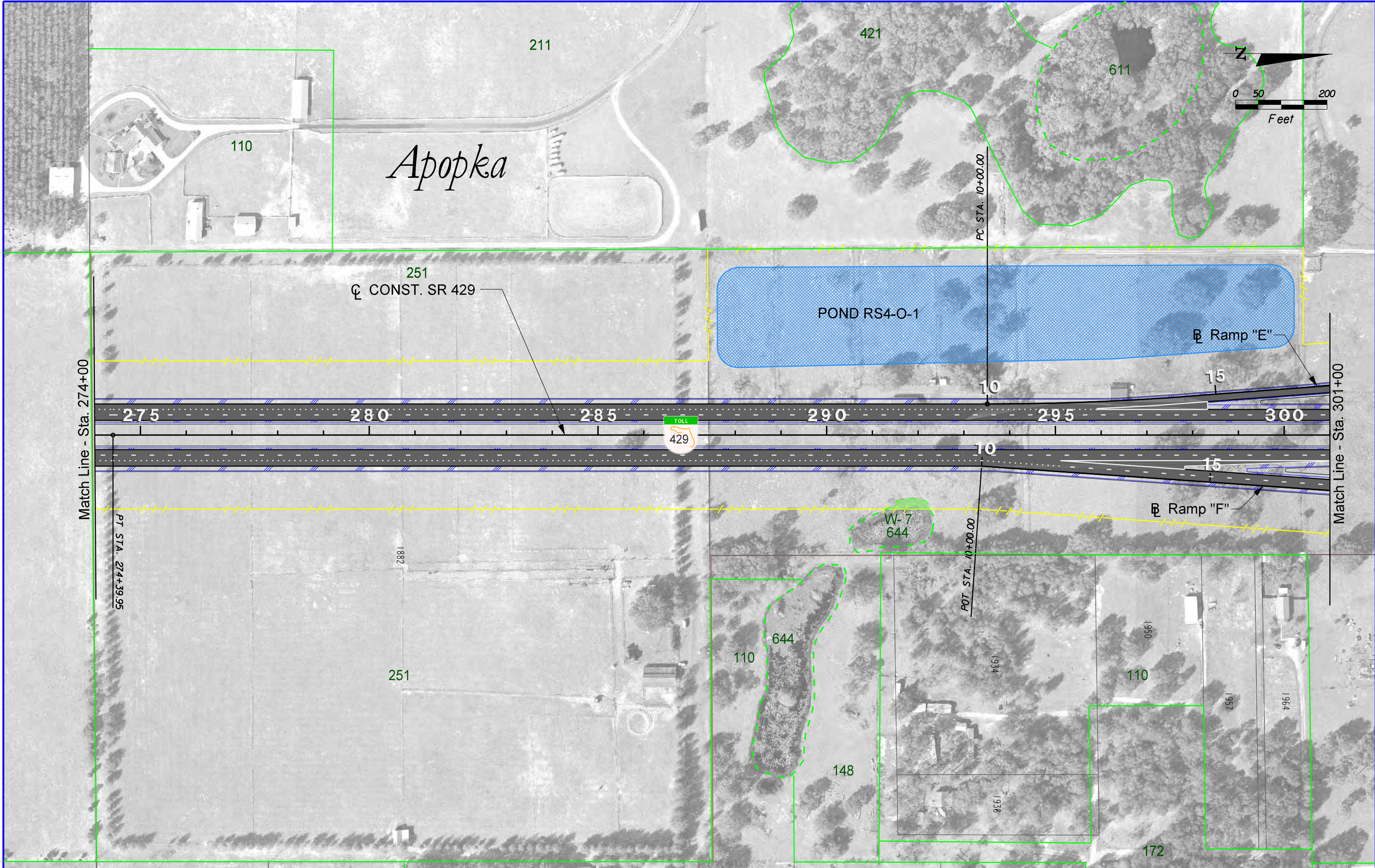
PARCEL CODES

PAVEMENT TO BE REMOVED

6/9/2010

11:19:19 AM

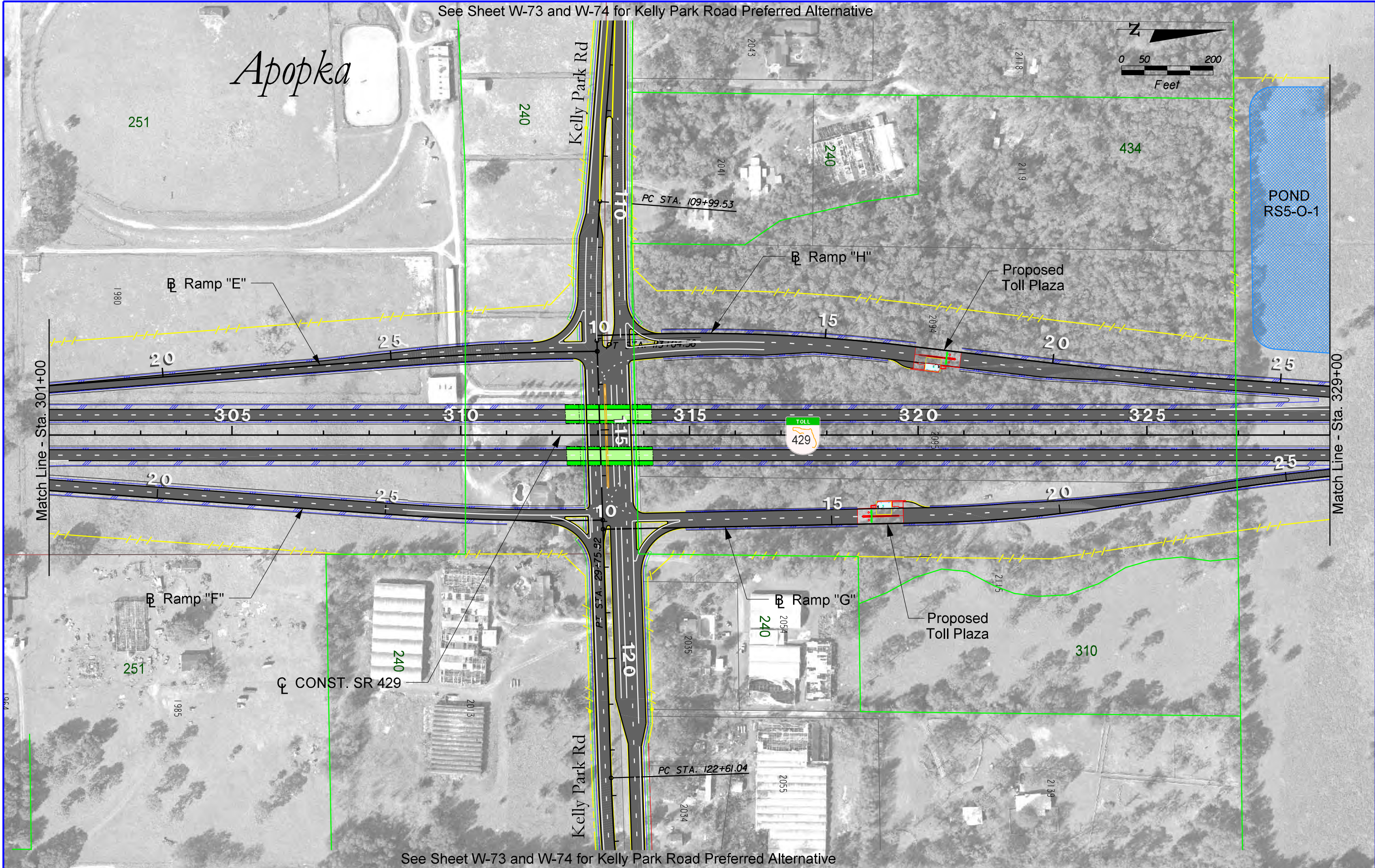
P:\Transportation\Cadpro\324\26\wetlands\PLANW107.dgn






<p>LEGEND</p> <p>W-59 630</p> <p>WETLAND BOUNDARIES WETLAND ID NUMBERS FLUCFCS FLUCFCS BOUNDARIES WETLAND IMPACTED AREAS</p> <p>MUNICIPAL BOUNDARIES STORMWATER PONDS 3602 PARCEL CODES PAVEMENT TO BE REMOVED</p>	<p>KEY MAP</p>		<p>WEKIVA PARKWAY Project Development and Environment Study Orange, Lake & Seminole Counties</p>	<p>Wekiva Parkway (SR 429) / SR 46 Realignment</p> <p>PREFERRED ALTERNATIVE EXISTING CONDITIONS</p> <p>STA. 274+00 - STA. 301+00</p>	<p>SHEET NO.</p> <p>W-8</p>
---	-----------------------	--	---	---	-----------------------------

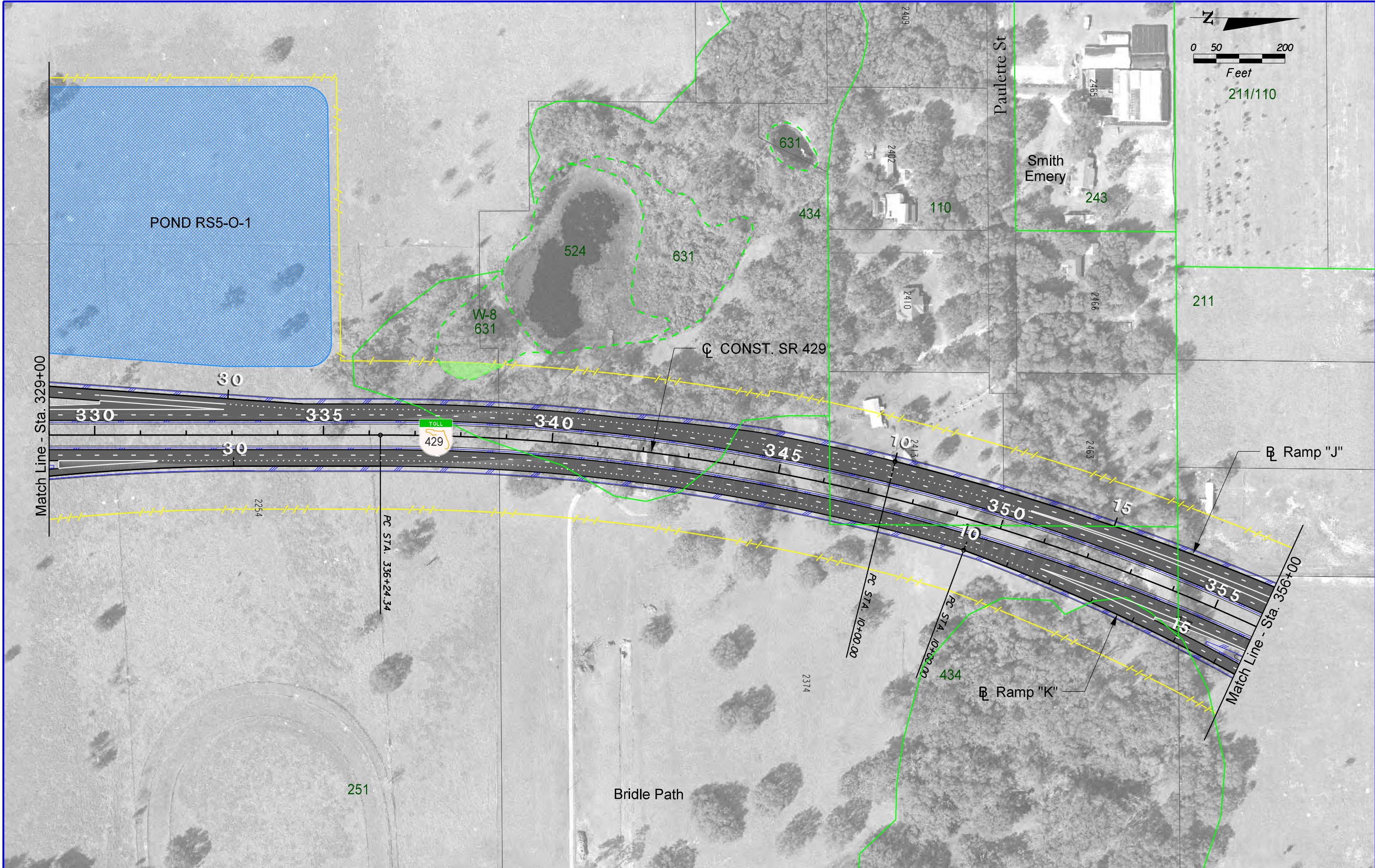
6/9/2010 11:19:36 AM P:\Transportation\Cadpro\324\26\wetlands\PLANW108.dgn

Аропка



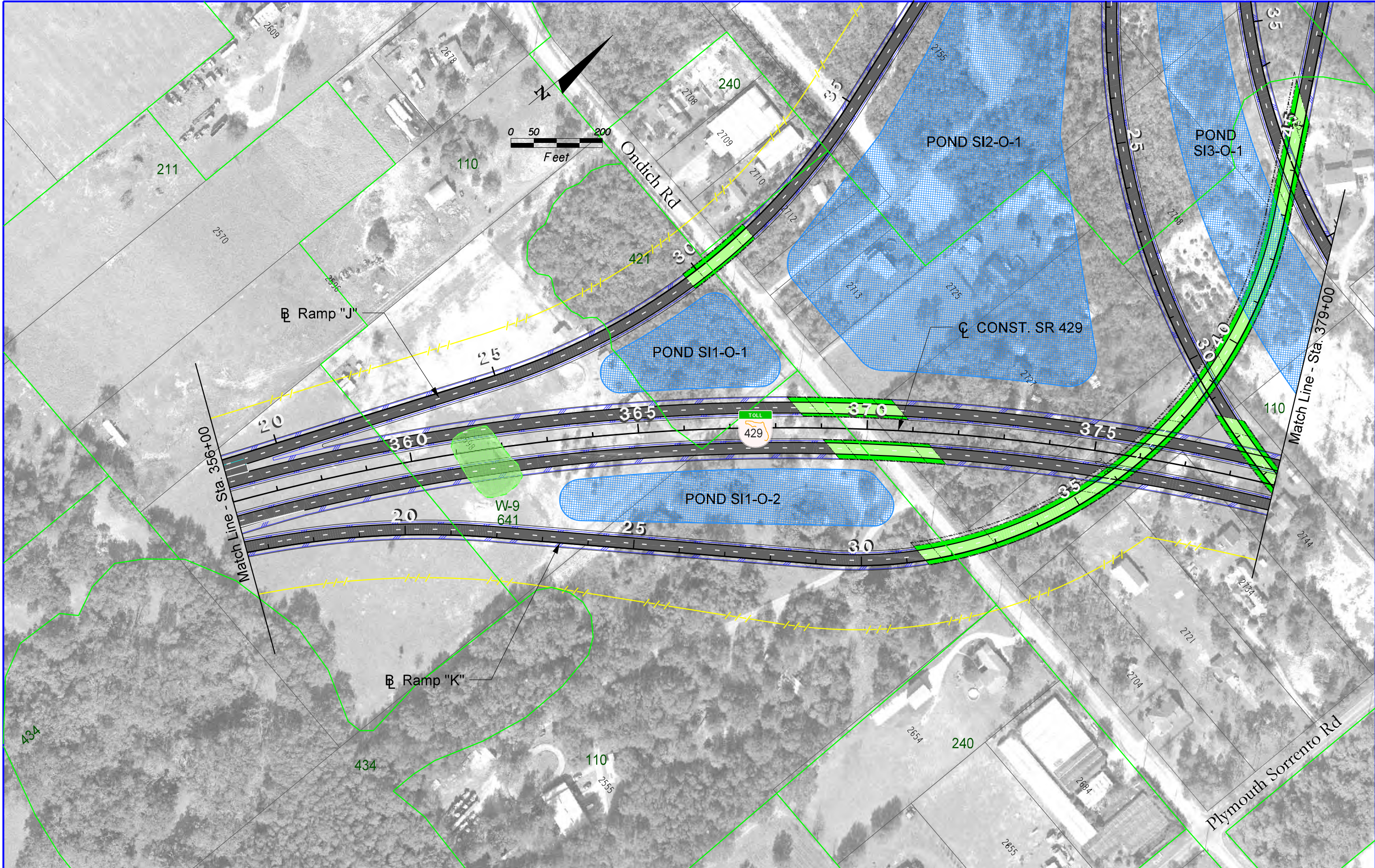
See Sheet W-73 and W-74 for Kelly Park Road Preferred Alternative

LEGEND		KEY MAP		<div><div>WEEKIVA PARKWAY Project Development and Environment Study Orange, Lake & Seminole Counties</div></div>		Wekiva Parkway (SR 429) / SR 46 Realignment		SHEET NO.	
W-59 630 WETLAND BOUNDARIES WETLAND ID NUMBERS FLUCFCS FLUCFCS BOUNDARIES WETLAND IMPACTED AREAS						PREFERRED ALTERNATIVE EXISTING CONDITIONS		W-9	
MUNICIPAL BOUNDARIES STORMWATER PONDS 3802 PARCEL CODES PAVEMENT TO BE REMOVED						STA. 301+00 - STA. 329+00			



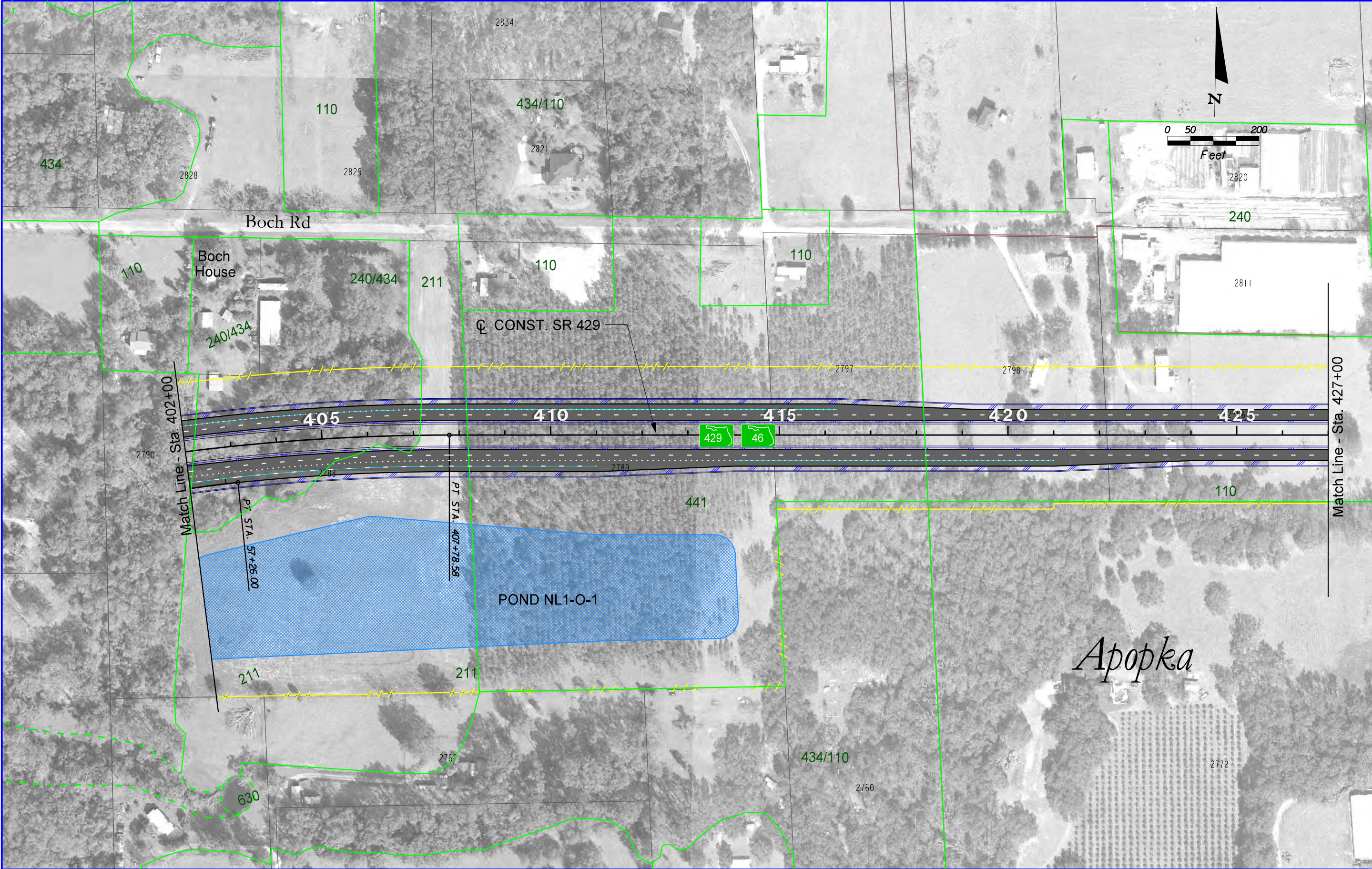
LEGEND W-59 630 WETLAND ID NUMBERS FLUCFCS FLUCFCS BOUNDARIES WETLAND IMPACTED AREAS		MUNICIPAL BOUNDARIES STORMWATER PONDS 3802 PARCEL CODES PAVEMENT TO BE REMOVED		KEY MAP 				Wekiva Parkway (SR 429) / SR 46 Realignment PREFERRED ALTERNATIVE EXISTING CONDITIONS STA. 329+00 - STA. 356+00		SHEET NO. W-10
---	--	--	--	--------------------	--	--	--	---	--	-------------------


6/9/2010 11:20:11 AM P:\Transportation\Cadpro\324\26\wetlands\PLANW10.dgn



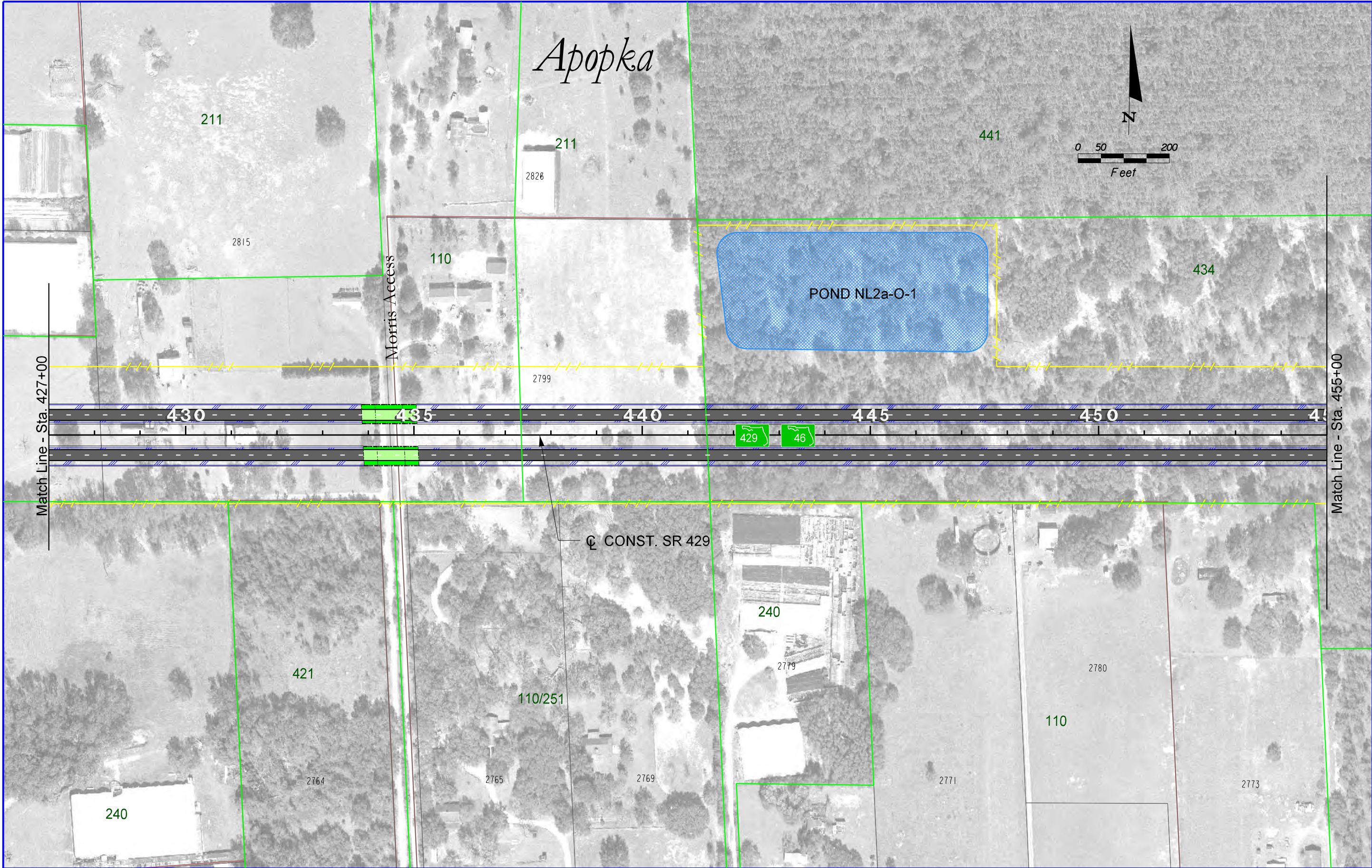
LEGEND W-59 630 WETLAND BOUNDARIES WETLAND ID NUMBERS FLUCFCS FLUCFCS BOUNDARIES WETLAND IMPACTED AREAS		MUNICIPAL BOUNDARIES STORMWATER PONDS 3602 PARCEL CODES PAVEMENT TO BE REMOVED		KEY MAP 		 Project Development and Environment Study Orange, Lake & Seminole Counties		Wekiva Parkway (SR 429) / SR 46 Realignment PREFERRED ALTERNATIVE EXISTING CONDITIONS STA. 356+00 - STA. 379+00		SHEET NO. W-11	
---	--	---	--	--------------------	--	---	--	---	--	-------------------	--

6/9/2010 11:20:41 AM P:\Transportation\Cadpro\324\26\wetlands\PLANWUI.dgn



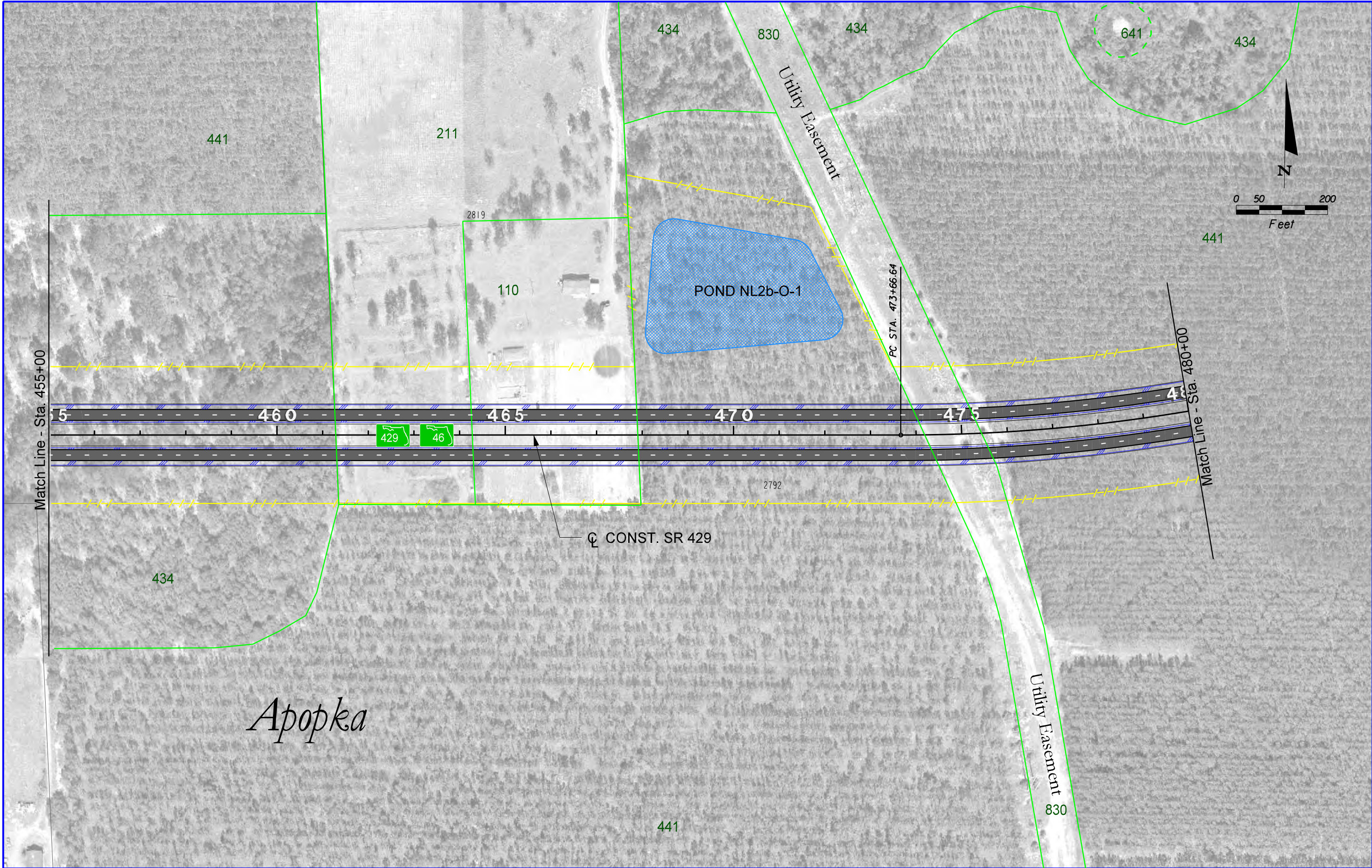
LEGEND W-59 630 WETLAND BOUNDARIES WETLAND ID NUMBERS FLUCFCS FLUCFCS BOUNDARIES WETLAND IMPACTED AREAS		KEY MAP MUNICIPAL BOUNDARIES STORMWATER PONDS 3602 PARCEL CODES PAVEMENT TO BE REMOVED		  WEEKIVA PARKWAY Project Development and Environment Study Orange, Lake & Seminole Counties		Wekiva Parkway (SR 429) / SR 46 Realignment PREFERRED ALTERNATIVE EXISTING CONDITIONS STA. 402+00 - STA. 427+00		SHEET NO. W-13	
---	--	--	--	---	--	---	--	-------------------	--

6/9/2010 11:22:21 AM P:\Transportation\Cadproj\324\26\wetlands\PLAN\U13.dgn



LEGEND W-59 630 WETLAND BOUNDARIES WETLAND ID NUMBERS FLUCFCS FLUCFCS BOUNDARIES WETLAND IMPACTED AREAS		KEY MAP MUNICIPAL BOUNDARIES STORMWATER PONDS 3602 PARCEL CODES PAVEMENT TO BE REMOVED				Wekiva Parkway (SR 429) / SR 46 Realignment PREFERRED ALTERNATIVE EXISTING CONDITIONS STA. 427+00 - STA. 455+00		SHEET NO. W-14
---	--	--	--	--	--	---	--	-------------------

6/9/2010 11:22:46 AM P:\Transportation\Cadproj\324\26\wetlands\PLANWL14.dgn

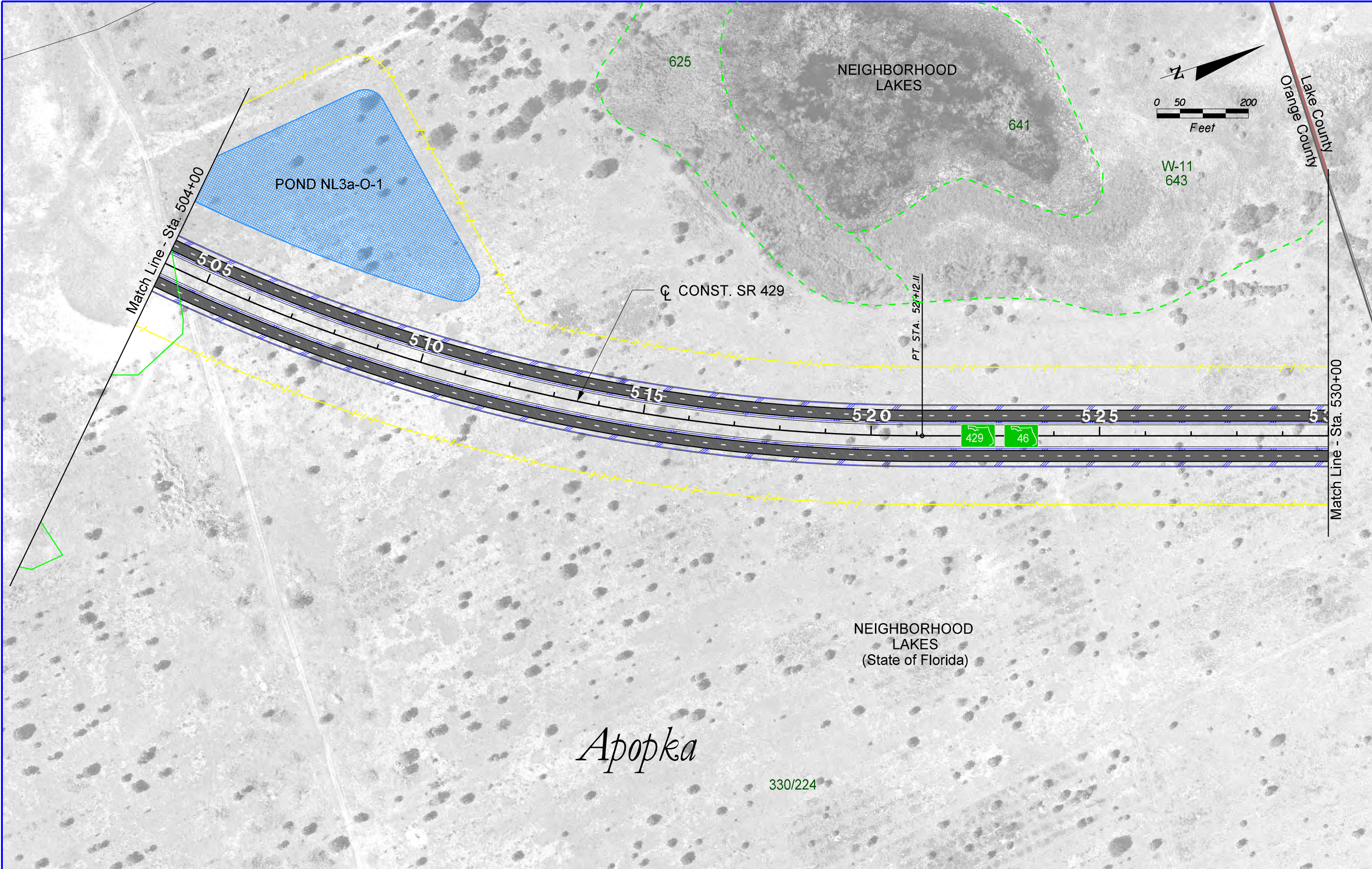















LEGEND W-59 630 FLUCFCS FLUCFCS BOUNDARIES WETLAND IMPACTED AREAS		MUNICIPAL BOUNDARIES STORMWATER PONDS 3602 PARCEL CODES PAVEMENT TO BE REMOVED		KEY MAP 	 EXPRESSWAY AUTHORITY	 DISTRICT FIVE	 WEKIVA PARKWAY Project Development and Environment Study Orange, Lake & Seminole Counties	Wekiva Parkway (SR 429) / SR 46 Realignment		SHEET NO.
								PREFERRED ALTERNATIVE EXISTING CONDITIONS STA. 455+00 - STA. 480+00		W-15

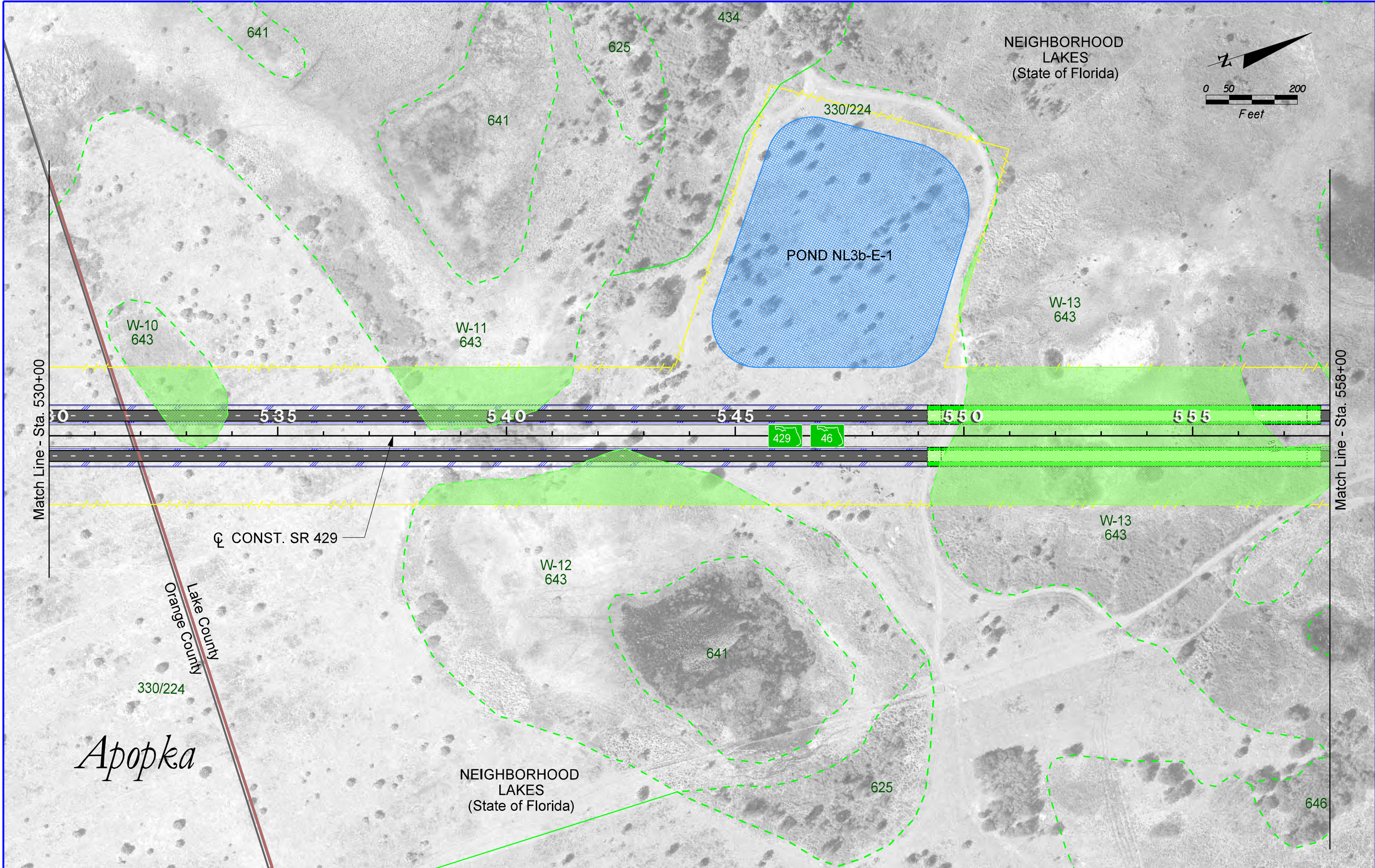
6/9/2010 11:23:03 AM P:\Transportation\Cadproj\324\26\wetlands\PLAN\W15.dgn



<p>LEGEND</p> <p>W-59 630</p> <p>WETLAND BOUNDARIES WETLAND ID NUMBERS FLUCFCS FLUCFCS BOUNDARIES WETLAND IMPACTED AREAS</p> <p>MUNICIPAL BOUNDARIES STORMWATER PONDS 3602 PARCEL CODES PAVEMENT TO BE REMOVED</p>	<p>KEY MAP</p>		<p>WEKIVA PARKWAY Project Development and Environment Study Orange, Lake & Seminole Counties</p>	<p>Wekiva Parkway (SR 429) / SR 46 Realignment</p> <p>PREFERRED ALTERNATIVE EXISTING CONDITIONS</p> <p>STA. 480+00 - STA. 504+00</p>	<p>SHEET NO.</p> <p>W-16</p>
---	-----------------------	--	---	---	------------------------------



LEGEND			KEY MAP		  		Wekiva Parkway (SR 429) / SR 46 Realignment		SHEET NO.
	WETLAND BOUNDARIES	 MUNICIPAL BOUNDARIES		 STORMWATER PONDS			Project Development and Environment Study Orange, Lake & Seminole Counties		PREFERRED ALTERNATIVE
	WETLAND ID NUMBERS	 3802 PARCEL CODES			EXISTING CONDITIONS				
	FLUCFCS	 PAVEMENT TO BE REMOVED							
	FLUCFCS BOUNDARIES								
	WETLAND IMPACTED AREAS						STA. 504+00 - STA. 530+00		W-17



LEGEND W-59 630 WETLAND ID NUMBERS FLUCFCS FLUCFCS BOUNDARIES WETLAND IMPACTED AREAS		MUNICIPAL BOUNDARIES STORMWATER PONDS 3802 PARCEL CODES PAVEMENT TO BE REMOVED		KEY MAP 	 EXPRESSWAY AUTHORITY	 DISTRICT FIVE	WEKIVA PARKWAY Project Development and Environment Study Orange, Lake & Seminole Counties	Wekiva Parkway (SR 429) / SR 46 Realignment		SHEET NO. W-18
								PREFERRED ALTERNATIVE EXISTING CONDITIONS STA. 530+00 - STA. 558+00		

6/9/2010 11:24:19 AM P:\Transportation\Cadpro\324\26\wetlands\PLANW18.dgn