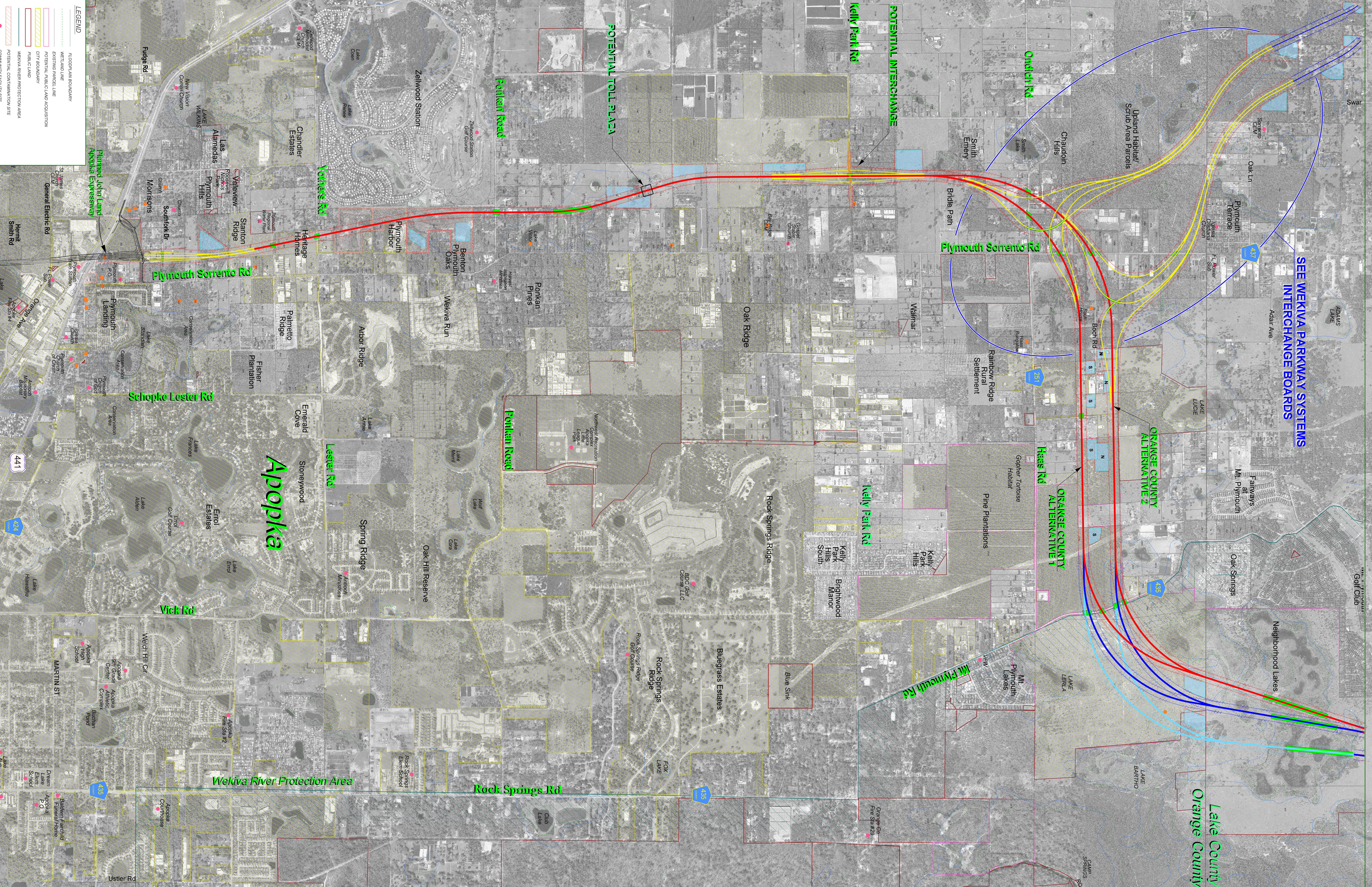


SEE WEKIVA PARKWAY SYSTEMS
INTERCHANGE BOARDS

Lake County
Orange County



LEGEND

- FLOORPLAN BOUNDARY
- WETLAND LINE
- EXISTING PARCEL LINE
- POTENTIAL PARCEL LINE
- OTY BOUNDARY
- PUBLIC LAND
- WEKIVA RIVER PROTECTION AREA
- POTENTIAL CONTAMINATION SITE
- COMMUNITY FACILITY SITE
- UNUSUAL SITE
- PROPOSED LA RIGHT-OF-WAY
- POTENTIAL POND
- PROPERTY PARCEL CODE

EXPRESSWAY AUTHORITY

DEPARTMENT OF TRANSPORTATION
FLORIDA

CH2MHILL

225 E. Robinson Street, Suite 606
Orlando, FL 32801-4321
Florida License No. 0000772

WEKIVA PARKWAY

Project Development and Environment Study
Orange, Lake & Seminole Counties

ORANGE COUNTY

Viable Alternatives
Kelly Park Road Interchange

JULY 25, 2006 1" = 800'