

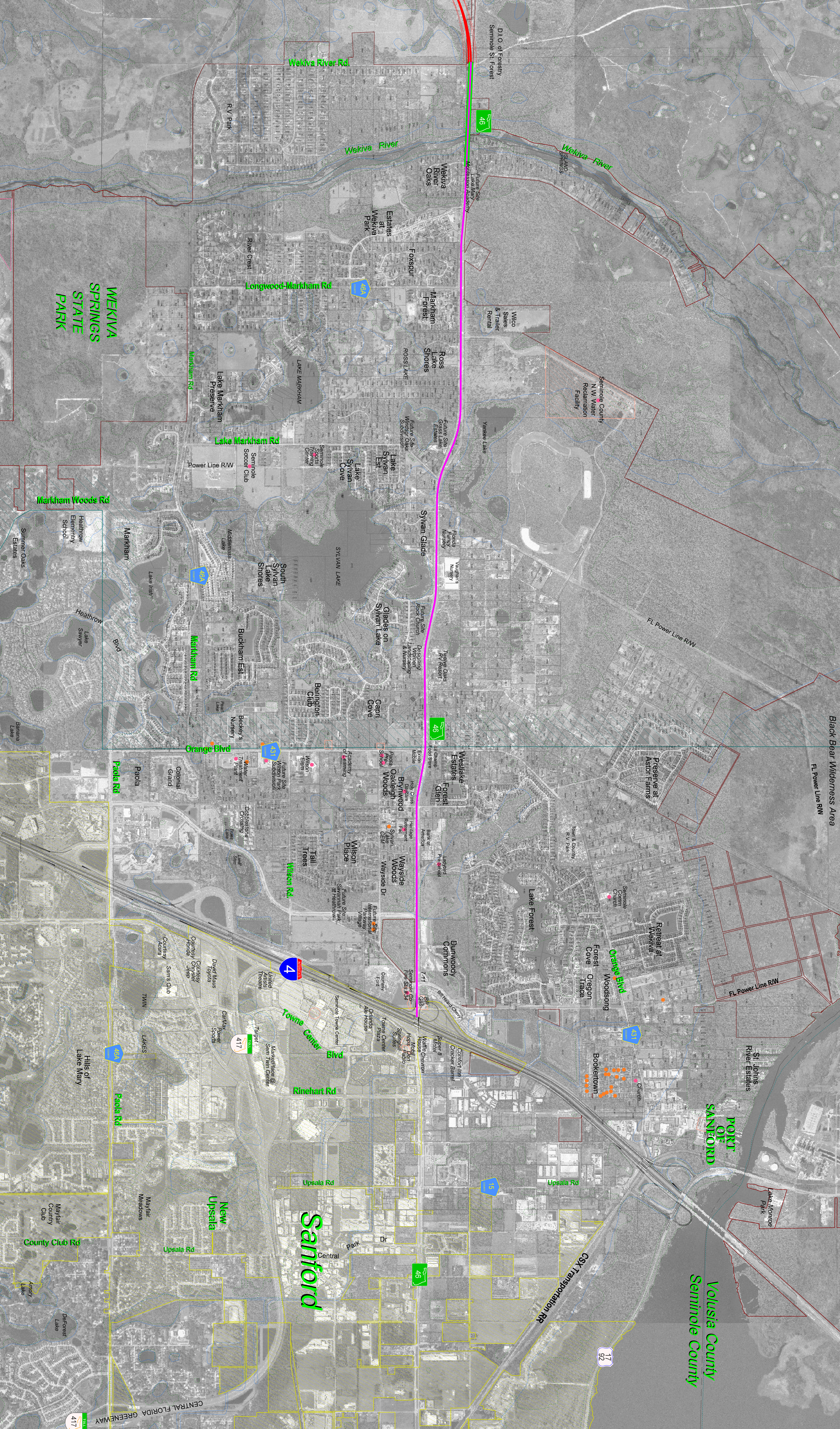
LEGEND

POTENTIAL CONTAMINATION SITE	FLOODPLAIN BOUNDARY
COMMUNITY FACILITY SITE	WETLAND LINE
HISTORICAL SITE	EXISTING PARCEL LINE
CITY BOUNDARY	PROPOSED BRIDGE
WEKIVA RIVER PROTECTION AREA	PROPOSED LA RIGHT-OF-WAY
PUBLIC LAND	PROPERTY PARCEL COORDS
POTENTIAL PUBLIC LAND ACQUISITION	

CH2MHILL
225 E. Robinson Street, Suite 806
Orlando, FL 32801-4231
Date of Administration No. 000072

WEEKIYA PARKWAY
Project Development and Environment Study
Orange, Lake & Seminole Counties

SEMINOLE COUNTY
6-Lane Urban Section
(Wekiva River to I-4)
JULY 25, 2006 1" = 800'



Black Bear Wilderness Area
FL Power Line R/W
FL Power Line R/W
FL Power Line R/W
St. Johns River Estates
Lake Monroe Park
Volusia County
Seminole County