

LEGEND

- POTENTIAL CONTAMINATION SITE
- COMMUNITY FACILITY SITE
- HISTORICAL SITE
- CITY BOUNDARY
- Wekiiva River Protection Area
- PUBLIC LAND
- POTENTIAL PUBLIC LAND ACQUISITION
- FLOODPLAIN BOUNDARY
- WETLAND LINE
- EXISTING PARCEL LINE
- PROPOSED ALIGNMENT
- PROPOSED 14 RIGHT-OF-WAY
- PROPOSED RIGHT-OF-WAY
- PROPOSED PARCEL COVERS

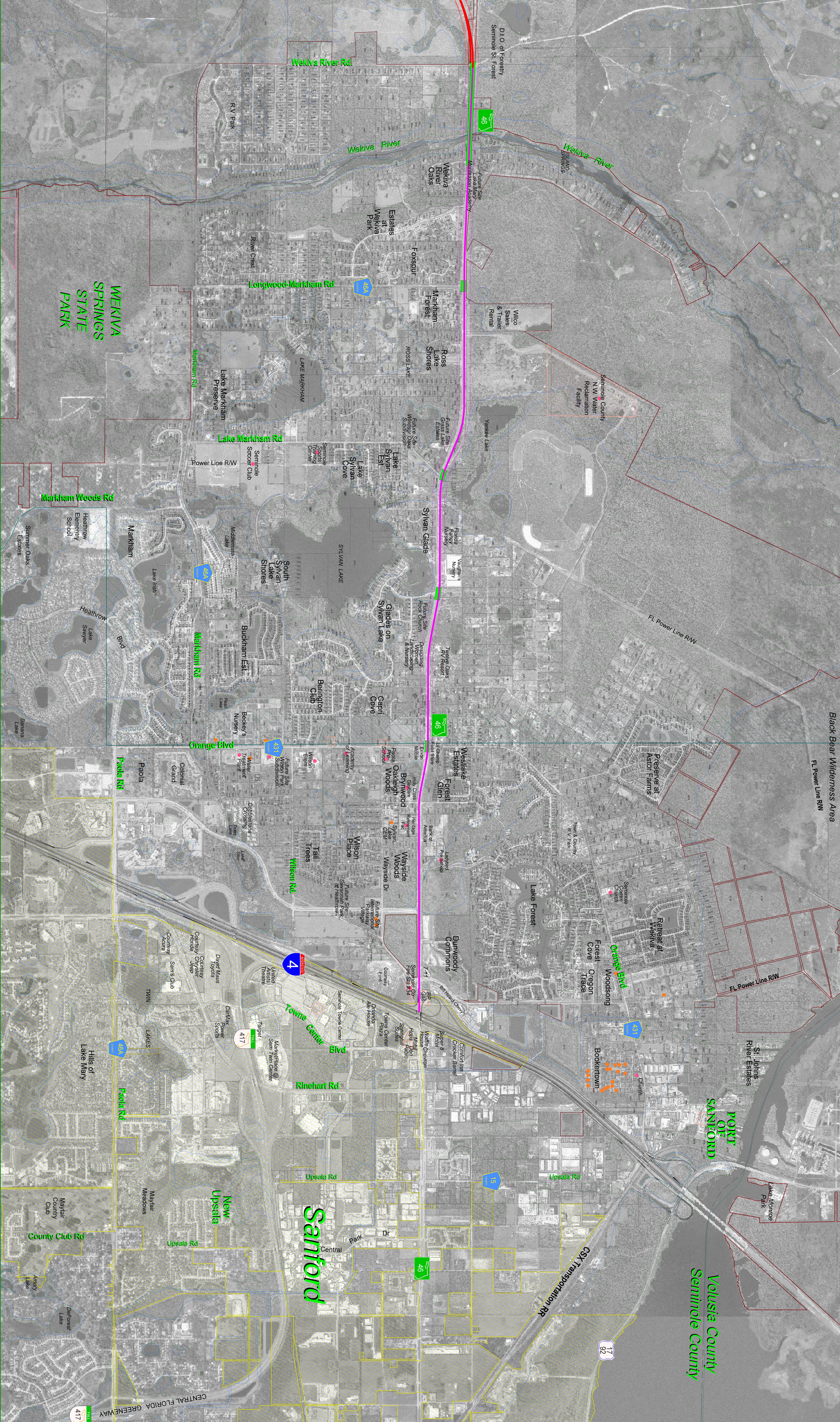
FLORIDA DEPARTMENT OF TRANSPORTATION

CH2MHILL

Wekiiva Parkway
Project Development and Environment Study
Orange, Lake & Seminole Counties

SEMINOLE COUNTY
Wekiiva Parkway to Orange Blvd
(Transition to 6-Lane Urban Section)
JULY 25, 2006 1" = 800'

0 200 Feet



Black Bear Wilderness Area
FL Power Line RW

FL Power Line RW

FL Power Line RW

St. Johns River Estates
Lake Monroe Park

Volusia County
Seminole County