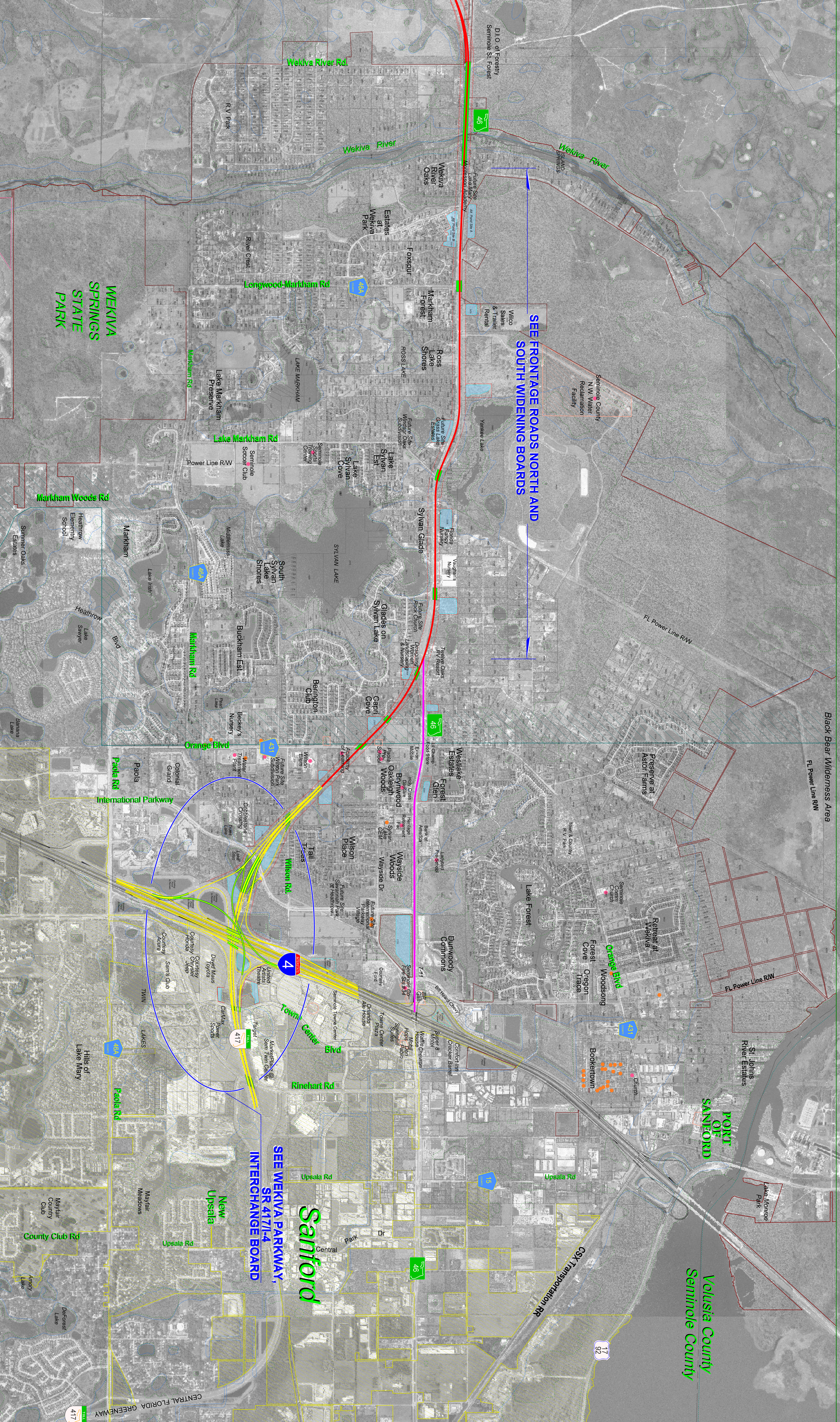
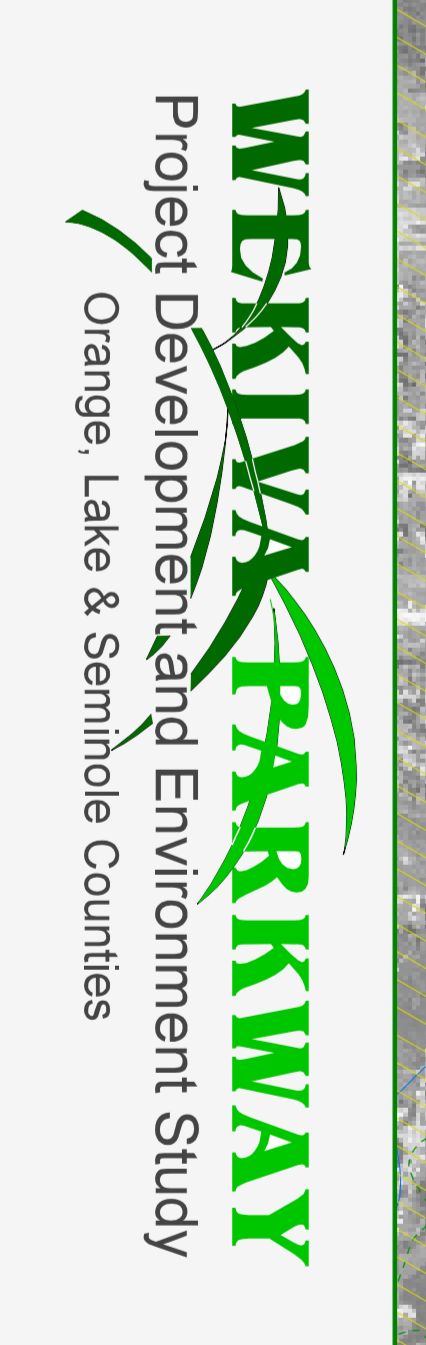
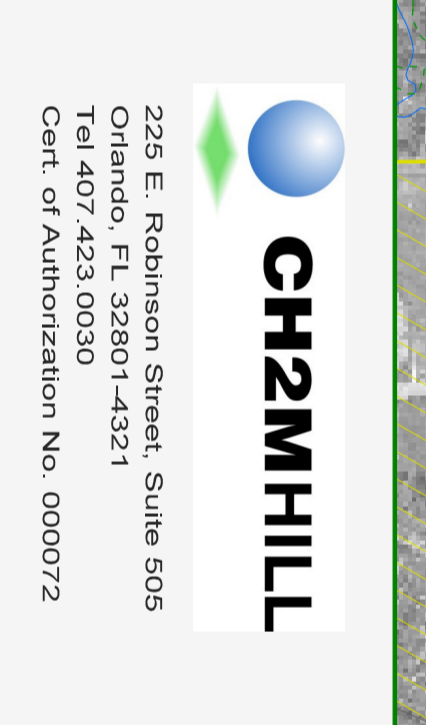


LEGEND

- POTENTIAL CONTAMINATION SITE
- COMMUNITY FACILITY SITE
- HISTORICAL SITE
- CITY BOUNDARY
- WEKIVA RIVER PROTECTION AREA
- PUBLIC LAND
- POTENTIAL PUBLIC LAND ACQUISITION
- FLOODPLAIN BOUNDARY
- WETLAND LINE
- EXISTING PARCEL LINE
- PROPOSED BRIDGE
- PROPOSED LA RIGHT-OF-WAY
- PROPOSED RIGHT-OF-WAY
- POTENTIAL ROAD
- PROPERTY PARCEL CODES



SEE FRONTAGE ROADS NORTH AND SOUTH WIDENING BOARDS

SEE WEKIVA PARKWAY, SR 417/I-4 INTERCHANGE BOARD

Volusia County
Seminole County

PORT OF SANFORD

Black Bear Wilderness Area
FL Power Line RW

FL Power Line RW

St. Johns River Estates

Lake Monroe Park

17
92

417

