


CENTRAL FLORIDA EXPRESSWAY AUTHORITY

MEMORANDUM

TO: CFX Board Members

FROM: Aneth Williams 
Director of Procurement

DATE: July 14, 2016

SUBJECT: Authorization for Sports District Supplemental Signage
S.R. 417 / Lake Nona Boulevard Exit Signage

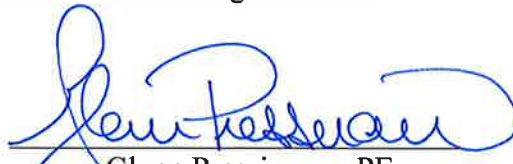
Board approval is requested for the addition of supplemental signage for the Sports District located approximately 1.5 miles north of S.R. 417 / Lake Nona Boulevard Interchange in the not-to-exceed amount of \$60,000.00.

As indicated in the attached correspondence from the United States Tennis Association (USTA), staff has coordinated and met with UTSA representatives to discuss the Sport District's multiple tenants and their request for supplemental signage.

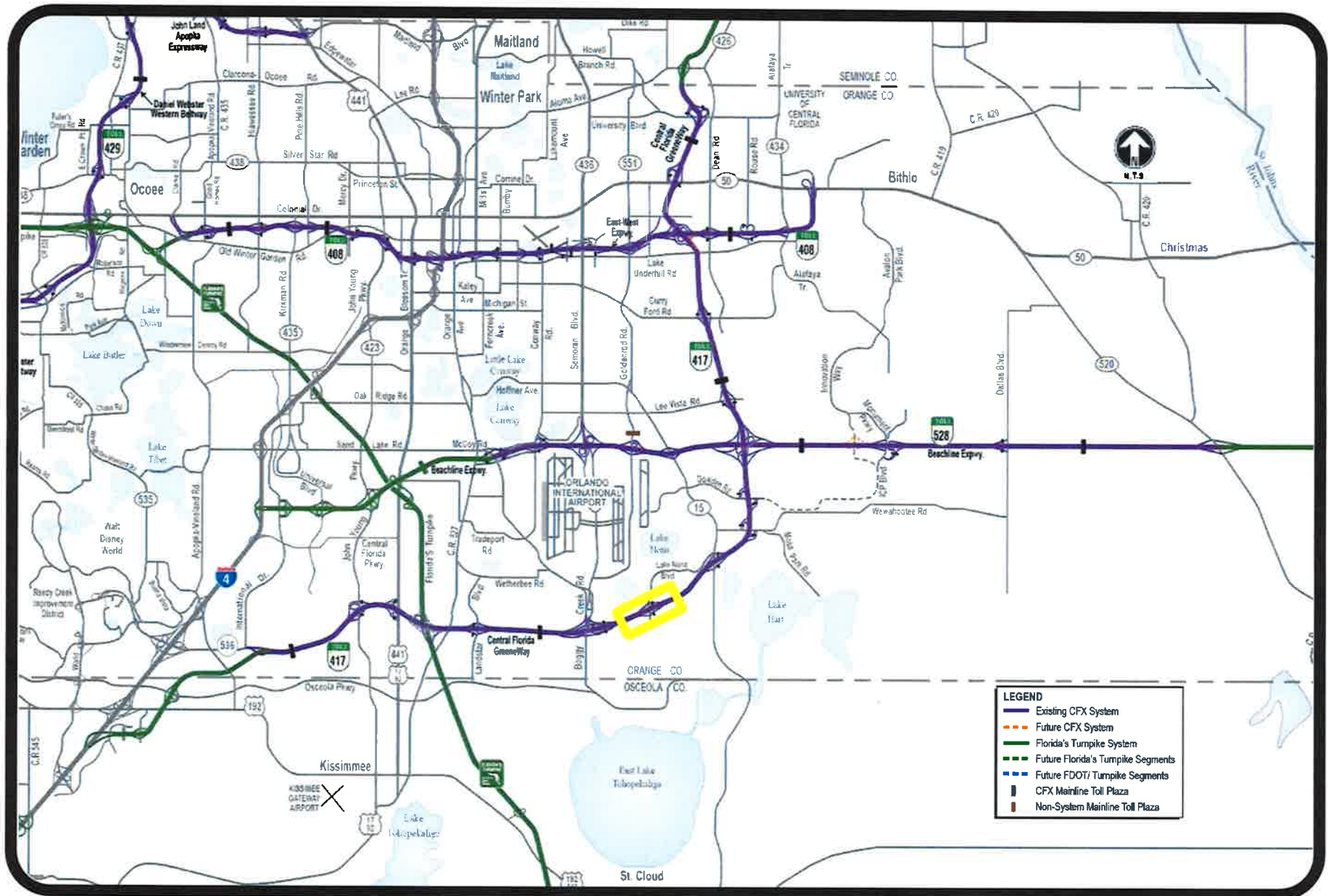
Consistent with the existing Medical City signage, two signs (one in each direction) would be placed on the S.R. 417 Mainline, and two signs (one at each ramp) at the Lake Nona Boulevard exit. Examples of the sign layouts are attached for reference.

Staff has reviewed the applicable criteria related to supplemental signage on limited access facilities and concurs with the USTA recommendation for the addition of 4 signs at the S.R. 417 Lake Nona Boulevard Interchange location.

Reviewed by:


Glenn Pressimone, PE
Director of Engineering





Location Map for
Sports District Supplemental Signage at S.R. 417 / Lake Nona Boulevard Interchange



UNITED STATES TENNIS ASSOCIATION

70 West Red Oak Lane
White Plains, NY 10604
www.usta.com

Daniel Malasky, Esq.
*General Counsel & Managing Director Business Affairs,
USTA National Campus*

May 17, 2016

VIA ELECTRONIC & US MAIL

Mr. Glenn M. Pressimone, P.E.
Central Florida Expressway Authority
4974 ORL Tower Rd.
Orlando, FL 32807
glenn.pressimone@cfxway.com

Re: USTA National Campus Request for Supplemental Signing on the CFX
System

Dear Mr. Pressimone:

I am in receipt of your letter dated March 7, 2016, and thank you for your support of supplemental wayfinding signage for the new Sports District which is slated to include, among others, the USTA National Campus, US Professional Tennis Association, USTA Florida Section, Orlando City Soccer, a multi-tenant sports development center, and a 200+ room hotel and conference center.

Based on the Florida Administrative Code Guidelines and the America Association of State Highway and Transportation Officials Guidelines as referenced in your letter, it appears the Sports District qualifies for signage at: (i) SR 417 approaching Lake Nona Boulevard (in both directions); and (ii) SR 528 approaching Narcoossee Road (in both directions), as the facility meets the requisite guidelines. Please note also we have been working closely with the City of Orlando and the Greater Orlando Aviation Authority who have each agreed to provide and install wayfinding signage for the Sports District on city roads and within the Airport's jurisdiction.

Per your request, this letter serves to confirm that the Sports District meets all the requirements of FAC and AASHTO including, without limitation: (i) the facility will generate an excess of 200,000 one-way annual trips; (ii) the Sports District is located 5 miles from both the SR 417 and SR 528 interchange; (iii) neither location represents a freeway to freeway intersection; and (iv) the USTA is a non-profit organization and the USTA National Campus is open to the public. We have reviewed the signage attached to your March 7 letter and we are in full support of the signage as proposed.

As a result, the USTA National Campus/Sports District formally requests the Central Florida Expressway Authority provide and install the supplemental wayfinding signage on the CFX System as referenced above in early-mid December 2016. The USTA National Campus currently plans to open to the public in mid-December with tournaments scheduled for the first week of January 2017. As requested, I am attaching an illustration of the signage that the City and GOAA have agreed upon which includes the following:

- 1) GOAA to install 3 signs directing vehicles to South Airport Exit onto 417;
- 2) City to install 2 signs at 528/Narcoossee Rd. exit directing South on Narcoossee Rd.;
- 3) City to install 2 signs at intersection of Narcoossee Rd. and Lake Nona Blvd.; and,
- 4) City to install 2 signs at intersection of Lake Nona Blvd. and Wellspring Dr. (new road leading to USTA Blvd.).

USTA will be directing 528 EB travelers to take Narcoossee Rd., South and 417 travelers to Lake Nona Boulevard Exit.

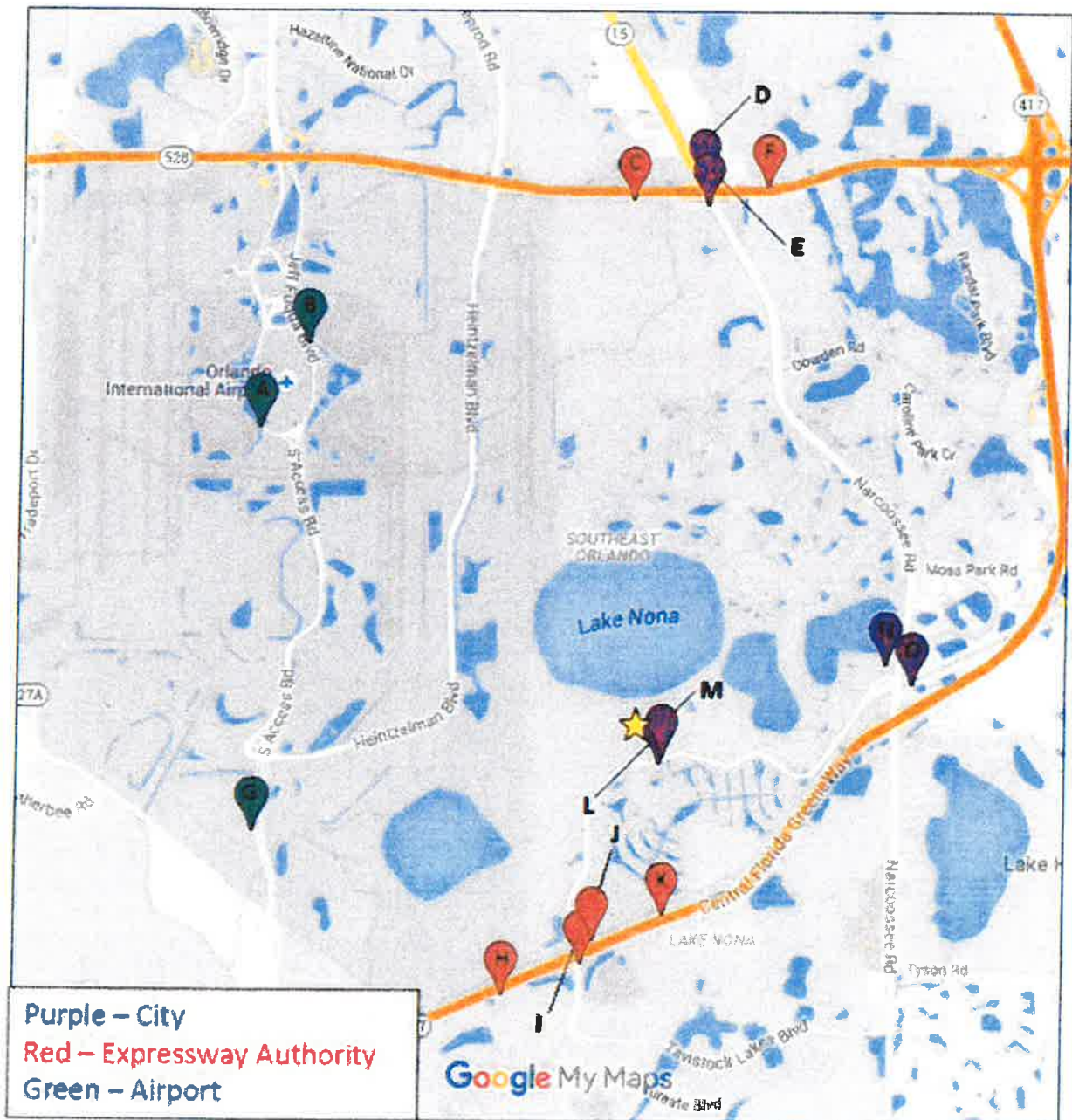
Furthermore, we request that the Central Florida Expressway Authority provide the proposed signage at no cost to Sports District tenants as the extensive volume of vehicles travelling on the CFX System to the Sports District will result in the generation of significant incremental revenue for Central Florida Expressway Authority. As you are aware, there is precedent for such request and approval as illustrated by the supplemental wayfinding signage for the neighboring Medical City.

Thank you in advance for your consideration and support of the Sports District and we look forward to working closely with the Central Florida Expressway Authority for many years to come.

Best Regards,



Dan Malasky, Esq.



SR 417 MAINLINE

EXIT 19

SPORTS DISTRICT

USTA National Campus
Orlando City Soccer
Future Copy

LAKE NONA NB RAMP

H

Medical City →

← Sports District

LAKE NONA SB RAMP

H

← Medical City

Sports District →