



Wekiva Parkway (S.R. 429)/S.R. 46 Realignment
Project Development and Environment Study
Orange, Lake, and Seminole Counties, Florida
Financial Project Numbers: 238275-1 and 240200-1

Public Hearing



October 26, 2010 (Orange County)
October 27, 2010 (Lake County)
October 28, 2010 (Seminole County)



Purpose of Public Hearing

- **Share information**
- **Describe the proposed improvements**
 - Roadway improvements
 - Interchange modifications
 - Section 4(f) determination
- **Opportunity for input**



Public Hearing Sessions

- **Session 1 (Orange County)**

October 26, 2010

VFW Post No. 10147

519 S. Central Ave., Apopka

- **Session 2 (Lake County)**

October 27, 2010

Lake Receptions

4425 N. Highway 19A, Mount Dora

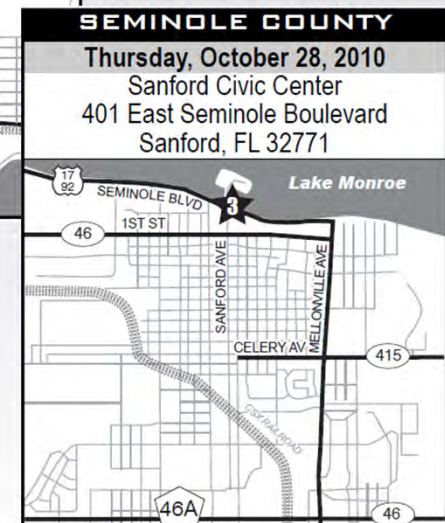
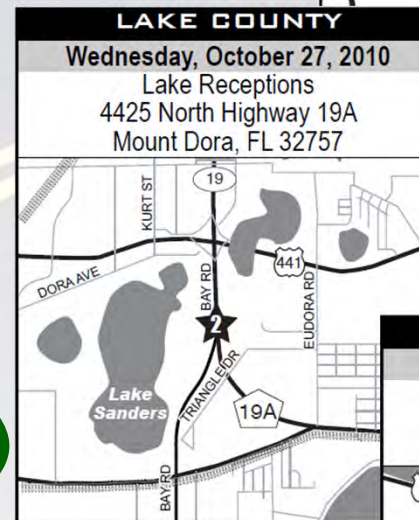
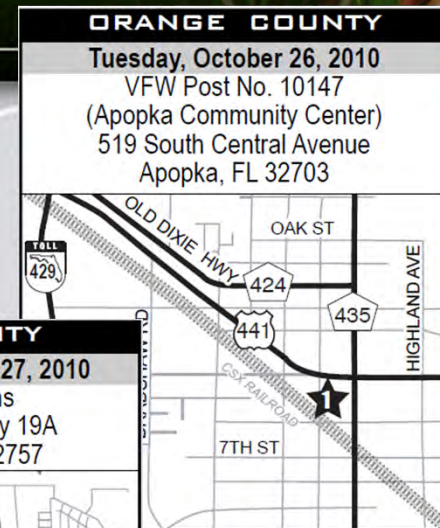
- **Session 3 (Seminole County)**

October 28, 2010

Sanford Civic Center

401 E. Seminole Blvd., Sanford

- **5 p.m. to 8 p.m**





Agenda

- **Introduction**
- **Public Hearing Presentation**
 - Project Description
 - Project Alternatives
 - Proposed Build Alternative
 - Evaluation of Alternatives
 - Next Steps
- **10 Minute Break**
- **Public Comment Period**
- **Conclusion**



PUBLIC HEARING ■ OCTOBER 26, 2010 ■ 5 P.M. TO 8 P.M. ■ VIEW POST NO. 10147 (APOKA COMMUNITY CENTER)

COMMENT FORM

WEKIVA PARKWAY (S.R. 429)/ S.R. 46 REALIGNMENT
PROJECT DEVELOPMENT & ENVIRONMENT (PD&E) STUDY

ORANGE, LAKE, AND SEMINOLE COUNTIES, FLORIDA

Please use this Comment Form to express your opinions about the Wekiva Parkway (S.R. 429)/ S.R. 46 Realignment PD&E Study. You may place your comments in the "Comment Box" provided at the meeting, or send to the address below by November 8, 2010.

Comments:

Please use the back of this form if more space is needed to express your opinions.

**PLEASE RETURN COMMENTS BY
NOVEMBER 8, 2010 TO:**

**Mr. Brian Hutchings
Public Information Officer**

✉ 4974 ORL Tower Road
Orlando, FL 32807

☎ Phone: (407) 383-5817
✉ Email: construction@oceca.com

Name _____
Last First Middle

Address _____
Street

City State Zip Code

Phone Number () _____
Area Code



Public Comments



**Written comments, exhibits and/or statements must be postmarked
by November 8, 2010 or e-mailed by November 8, 2010**

Mr. Brian Hutchings, Public Information Officer
OOCEA
4974 ORL Tower Road
Orlando, FL 32807
Phone: (407) 383-5817
E-mail: construction@oocea.com



Today's Public Comment Period

- **Give oral comments during the public comment period tonight**
 - Complete and return Speaker Request Card prior to making a recorded statement
 - Speakers will be taken in the order which the Speaker Request Cards were received
 - 2 Minutes per speaker

PUBLIC HEARING ■ OCTOBER 26, 2010 ■ 5 P.M. TO 8 P.M. ■ VFW POST NO. 10147

SPEAKER REQUEST CARD

WEKIVA PARKWAY (S.R. 429)/ S.R. 46 REALIGNMENT
PROJECT DEVELOPMENT & ENVIRONMENT (PD&E) STUDY
ORANGE, LAKE, AND SEMINOLE COUNTIES, FLORIDA

TBG090710121820ORL

TO BE COMPLETED PRIOR TO MAKING A RECORDED STATEMENT

PLEASE PRINT

Name: _____
Last First Middle

Address: _____
Street

City State Zip Code

Phone Number: () _____
Area Code

Representing: ☐ Self ☐ Government Agency _____
☐ Firm _____ ☐ Homeowners Association _____
☐ Other _____ ☐ Civic Organization _____

NUMBER ☐

Public Notices

- **Florida Administrative Weekly**
- **Newspaper Ads**
- **Notifications Letters**
 - 14,000 property owners and interested individuals
 - Over 200 elected or appointed officials and agency representatives
- **FDOT Public Meetings Website**
<http://www.dot.state.fl.us>
- **Expressway Authority Website**
<http://www.expresswayauthority.com>

NOTICE OF PUBLIC HEARINGS
Wekiva Parkway (S.R. 429) / S.R. 46 Realignment
Project Development & Environment (PDE) Study
Orange, Lake, and Seminole Counties, Florida
Financial Project Numbers: 238275-1 and 240200-1

The Florida Department of Transportation (FDOT), District Five and the Orlando-Orange County Expressway Authority (OOCEA) will conduct public hearings for the proposed improvements in Orange, Lake, and Seminole Counties for the subject project to which all persons are invited. Each hearing will follow the same agenda and the same project information will be available for public review and comment. The hearings will be held on the following dates and at the following locations:

ORANGE COUNTY	LAKE COUNTY	SEMINOLE COUNTY
Tuesday, October 26, 2010 VFW Post No. 10141 (Apopka Community Center) 519 South Central Avenue Apopka, FL 32703	Wednesday, October 27, 2010 Lake Receptions 4425 North Highway 15A Mount Dora, FL 32757	Thursday, October 28, 2010 Sanford Civic Center 401 East Seminole Boulevard Sanford, FL 32771

The hearings will be conducted from 5 p.m. to 8 p.m. with open house from 5 p.m. to 8 p.m. at which time the public may review maps, drawings and pertinent project information. The open house will be followed by a formal presentation at 6 p.m. and then a formal public comment period. Members of the study team will be available at the public hearings to answer project-related questions. In the event that severe weather or other unforeseen conditions cause the hearings to be postponed, the hearings will be held on the alternate dates of: Tuesday, November 16, 2010 at VFW Post No. 10141; Wednesday, November 17, 2010 at Lake Receptions; and Thursday, November 18, 2010 at the Sanford Civic Center (at the same times as shown above).

These public hearings are being held to give interested persons an opportunity to express their views concerning the location, conceptual design and social, economic and environmental effects of the proposed project and in accordance with Federal Executive Orders 11990 and 11988. The proposed improvements include construction of a new four-lane divided (expandable to six-lane divided) and six-lane divided limited access toll facility (known as the Wekiva Parkway) which would begin at the planned U.S. 441 (S.R. 500)/John Land Apopka Expressway (S.R. 429/S.R. 414) Interchange in Orange County and extend to the S.R. 417A-4 (S.R. 400) Interchange in Seminole County (approximately 20.9 miles). The proposed improvements include reconstruction of existing S.R. 46 from U.S. 441 to east of Round Lake Road in Lake County, realignment of existing S.R. 46 from east of Round Lake Road to a new systems interchange with Wekiva Parkway near the Orange/Lake County line, and realignment of C.R. 46A in Lake County. The proposed improvements involve construction of new interchanges, interchange modifications and access improvements which include a two-lane non-tolled service road parallel to the Wekiva Parkway from Neighborhood Lakes to east of the Wekiva River and two-lane, one-way non-tolled frontage roads parallel to the Wekiva Parkway from east of the Wekiva River to Orange Boulevard in Seminole County. The environmental document prepared for the study will be available for review at the public hearings from 5 p.m. to 8 p.m., online at <http://www.expresswayauthority.com>, and at the following locations during normal business hours from October 4, 2010 to November 8, 2010:

OOCEA 4674 ORL Tower Rd Orlando, FL 32807	FDOT District Five 719 South Woodland Blvd DeLand, FL 32720	FDOT Orlando Urban Office 133 South Semoran Blvd Orlando, FL 32807	Orlando Public Library 101 East Central Blvd Orlando, FL 32801
Orange County Library North Orange Branch 1211 East Semoran Blvd Apopka, FL 32703	Seminole County Library North Branch 150 North Palmetto Ave Sanford, FL 32771	East Lake County Library 31340 South C.R. 437 Sorrento, FL 32776	W.T. Bland Public Library 1995 North Donnelly St Mount Dora, FL 32757

Persons wishing to submit written statements or other exhibits, in place of or in addition to oral statements, may do so at the hearing or by sending them to Mr. Brian Hutchings, Public Information Officer, by mail at 4674 ORL Tower Road, Orlando, FL 32807, or by telephone at 407-363-5817, or by email at construction@oocea.com. All exhibits or statements postmarked on or before November 8, 2010 will become a part of the official public hearing record.

Public participation is solicited without regard to race, color, national origin, age, sex, religion, disability or family status. Persons who require special accommodations under the Americans with Disabilities Act or persons who require translation services (free of charge) should contact Mr. Brian Hutchings at 407-363-5817 or by writing to the above email or mailing address at least seven days prior to the public hearing. If you are hearing or speech impaired, please contact the agency using the Florida Relay Service, 1-800-955-8771 (TDD) or 1-800-955-8770 (Voice).





Hearing Compliance

- **U.S.C. Title 23 Section 128**
- **National Environmental Policy Act (NEPA) of 1969**
 - 23 CFR 771: Environmental Impact
 - 40 CFR Parts 1500-1508: Protection of Environment
- **Executive Orders**
 - 11593: Protection and Enhancement of Cultural Environment
 - 11988: Floodplain Management
 - 11990: Protection of Wetlands
 - 12898: Environmental Justice
- **Federal Aid Policy Guide**
- **Section 339.155, Florida Statutes**
- **Chapter 120, Florida Statutes**





Hearing Compliance

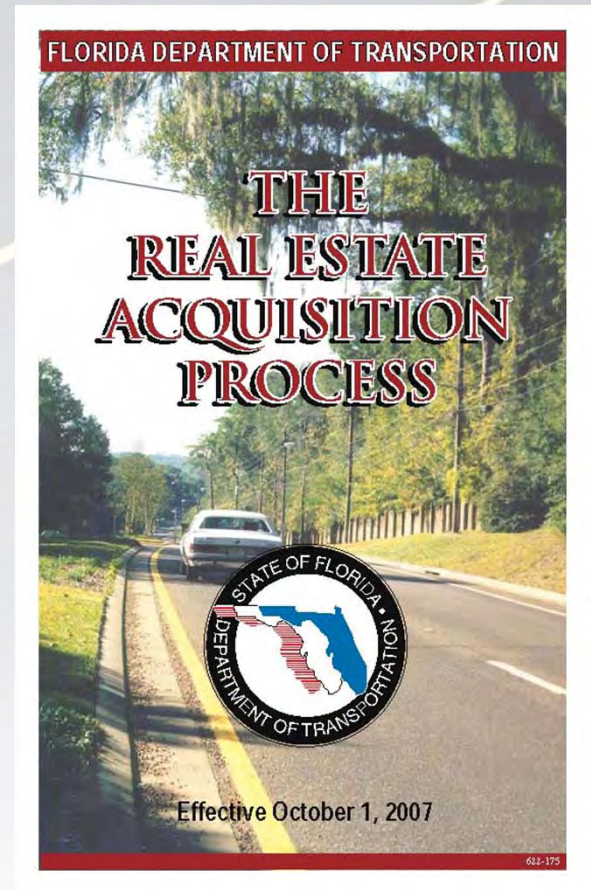
- **Title VI, Civil Rights Act of 1964 and related statutes**
- **Title VIII, Civil Rights Act of 1968, as amended**
- **Inquiries or complaints can be submitted to:**
 - Lorie Wilson, District Title VI Coordinator
719 South Woodland Blvd., DeLand, FL 32720
(386)943-5346
 - Charlotte Thomas, State Title VI Coordinator
Equal Opportunity Office, 605 Suwannee St., MS 65
Tallahassee, FL 32399-0450
(850)414-4753
- **Public Participation is encouraged and solicited without regard to race, color, creed, religion, sex, age, national origin, disability or family status**



Hearing Compliance

■ Right-of-Way Acquisition Process

- Federal Funding:
 - Section 339.09, Florida Statutes
 - Uniform Relocation Assistance and Real Property Acquisition Act of 1970 (Public Law 91-646, as amended by Public Law 100-17)
- Expressway Authority Funding:
 - Chapter 348, Part V, Florida Statutes
 - Chapters 73 and 74, Florida Statutes



Project Background

1986	Start Northwest Beltway Part B Study
1989	Northwest Beltway Part B Study Approved by FDOT
2002	Wekiva Basin Area Task Force
	S.R. 429 Working Group
2003	Wekiva River Basin Coordinating Committee
2004	Wekiva Parkway & Protection Act
	Wekiva River Basin Commission
2005	Wekiva Parkway (SR 429)/ SR 46 Realignment PD&E Study



Project Background

■ PD&E Jointly Managed

- FDOT District Five & OOCEA
- FHWA

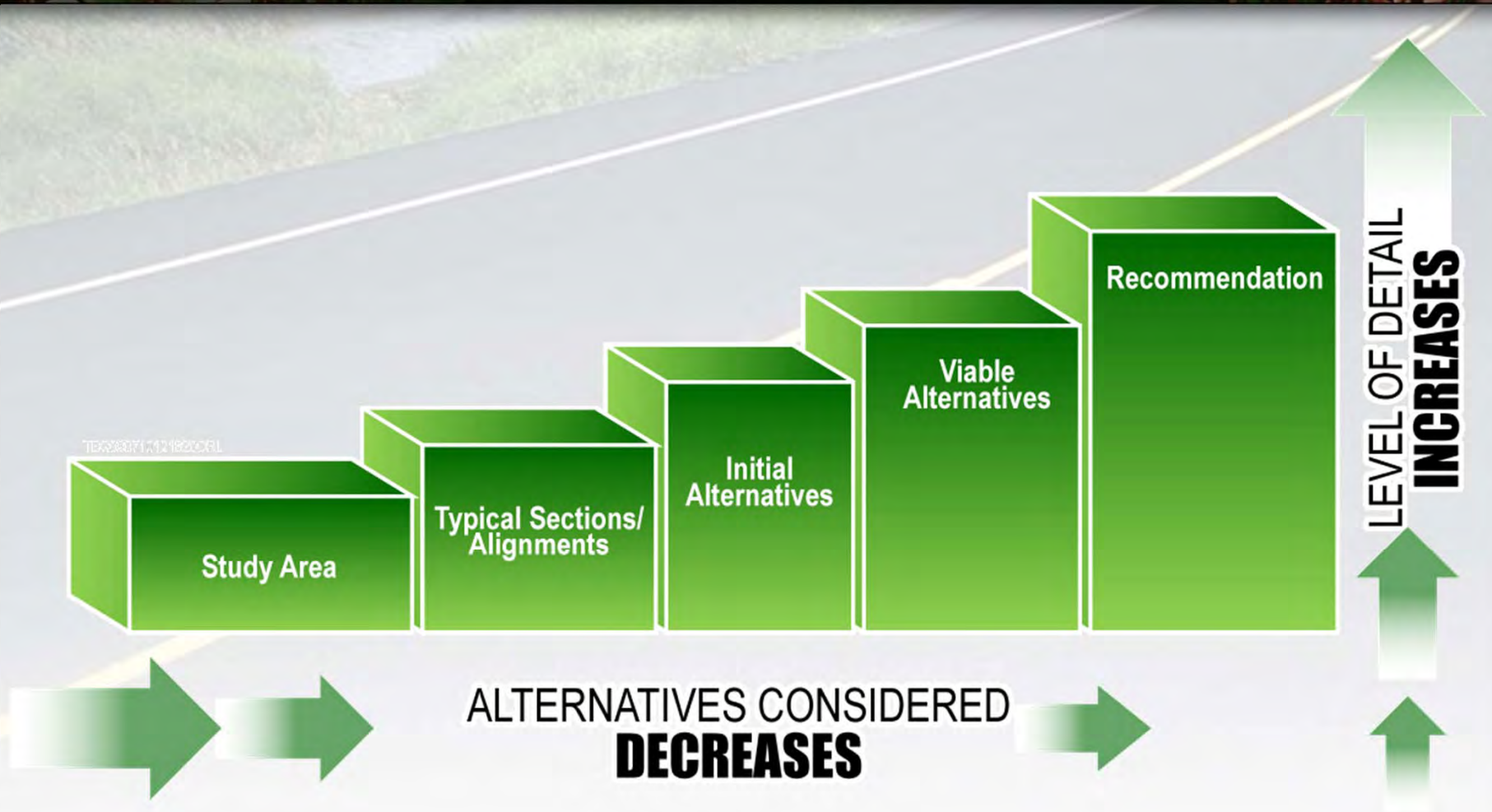


■ Project Coordination

- Orange, Lake and Seminole Counties
- Cities of Apopka, Mount Dora, Sanford
- Seminole County Expressway Authority
- METROPLAN Orlando
- Lake-Sumter Metropolitan Planning Organization
- Others



PD&E Study Process



Public Involvement Program



2005



Initial Alternatives Public Workshops
in Apopka, Mount Dora and Sanford



Viable Alternatives Public Workshops
in Apopka, Mount Dora and Sanford

Service Road Concept Public Workshop
in Sorrento



Public Hearing
in Apopka, Mount Dora and Sanford



Public Involvement Program



Approximately 300 meetings with public, elected officials and government agencies (2005-2010)

Public information outreach on Expressway Authority project website



Draft Environmental Assessment

OOCEA 4974 ORL Tower Rd Orlando, FL 32807	FDOT District Five 719 South Woodland Blvd DeLand, FL 32720	FDOT Orlando Urban Office 133 South Semoran Blvd Orlando, FL 32807	Orlando Public Library 101 East Central Blvd Orlando, FL 32801
Orange County Library North Orange Branch 1211 East Semoran Blvd Apopka, FL 32703	Seminole County Library North Branch 150 North Palmetto Ave Sanford, FL 32771	East Lake County Library 31340 South C.R. 437 Sorrento, FL 32776	W.T. Bland Public Library 1995 North Donnelly St Mount Dora, FL 32757

Federal Highway Administration
Florida Division

ADMINISTRATIVE ACTION ENVIRONMENTAL ASSESSMENT

U.S. Department of Transportation,
Federal Highway Administration
and
Florida Department of Transportation, District Five
in cooperation with the
Orlando-Orange County Expressway Authority
Financial Project Number: 238275 1 22 01 and 240200 1 22 01
Federal Project Number: TBD

WEKIVA PARKWAY (SR 429)/SR 46 REALIGNMENT Orange, Lake, and Seminole Counties, Florida

Wekiva Parkway (SR 429)
From US 441 (SR 500)/John Land Apopka Expressway (SR 429/SR 414) Interchange, Orange County
to SR 417/I-4 (SR 400) Interchange, Seminole County

SR 46 Realignment
From US 441 (SR 500)/SR 46 Interchange, Lake County
to Wekiva Parkway (SR 429), Orange County

Wekiva Parkway: Construction of a new four-lane/six-lane limited access expressway to complete the Western Beltway (SR 429) around the metropolitan Orlando area from Apopka in Orange County to Sanford in Seminole County. The approximate length is 20.9 miles. The project includes a new systems interchange with the SR 46 Realignment and a modification of the existing systems interchange at SR 417/I-4; three new local access interchanges at Kelly Park Road, Neighborhood Lakes and International Parkway; major structures at the systems interchanges and four environmental/wildlife bridges. Realignment of CR 46A in Lake County is included as part of the Wekiva Parkway project. The approximate length of the CR 46A Realignment is 2.7 miles. The realignment is proposed as a two-lane, expandable to four-lane, rural facility.

SR 46 Realignment: Reconstruction of the existing SR 46 facility in Lake County and Mount Dora to provide six-lane divided controlled-access from US 441 to east of Round Lake Road. The project includes reconstruction of the existing US 441/SR 46 interchange with associated major structures. The realignment of SR 46 from east of Round Lake Road to a new systems interchange with Wekiva Parkway near the Orange/Lake County line is proposed as a limited access expressway. The approximate length of the SR 46 Realignment is 4.8 miles.

Submitted pursuant to 42 U.S.C. 4332 (2)(c).

Approved For Public Availability

B. J. [Signature]
Date

George B. Howell
Division Administrator
Federal Highway Administration

Available for download on <http://www.expresswayauthority.com>

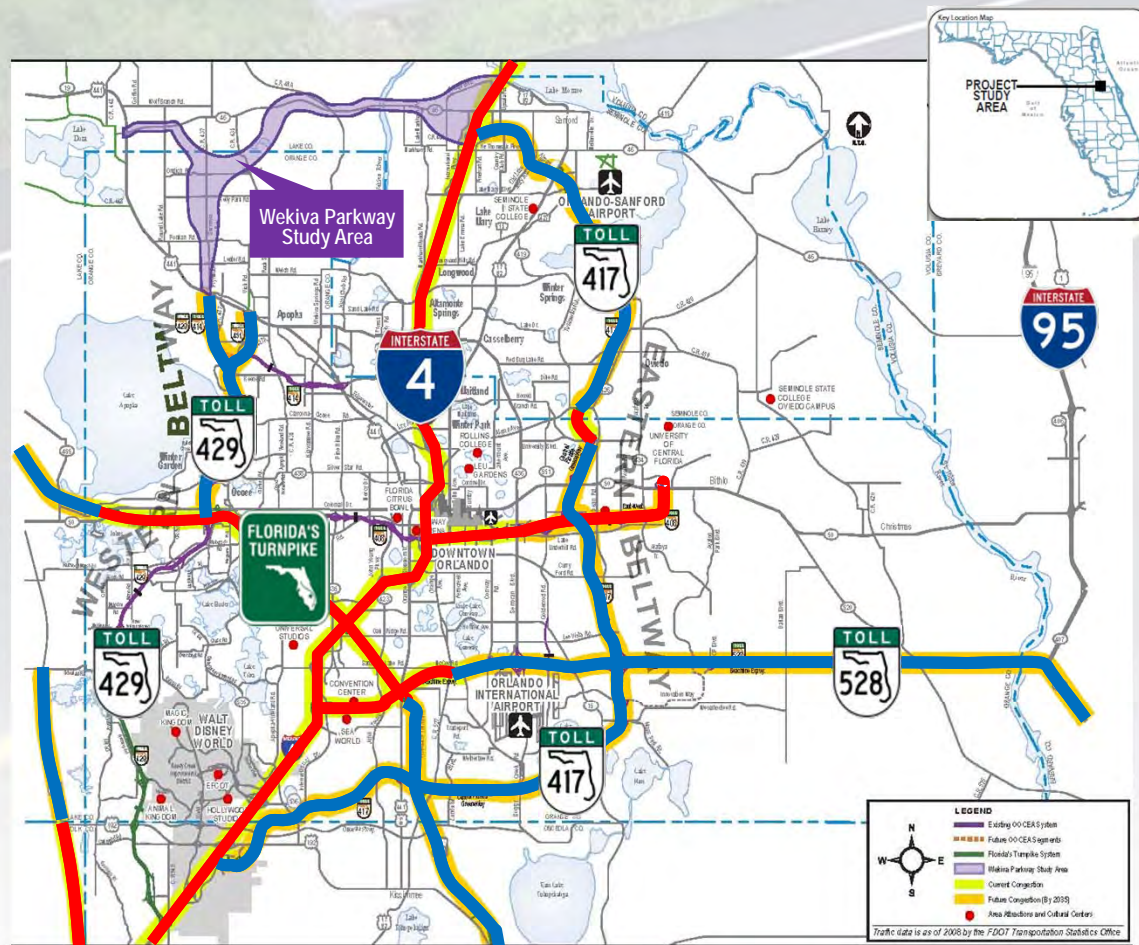




Project Description



Project Need



- Currently Congested
- Congested by 2035

Need for:

- Regional system connectivity
- Improved east-west roadway capacity between Lake County and Seminole County



Project Purpose and Need

- Complete the Western Beltway (S.R. 429)
- Provide an efficient east-west roadway
- Improve safety
- Minimize impacts to the Wekiva Basin Area
- Improve wildlife habitat connectivity
- Reduce vehicle-wildlife conflicts



Project Location Map

■ **Wekiva Parkway**

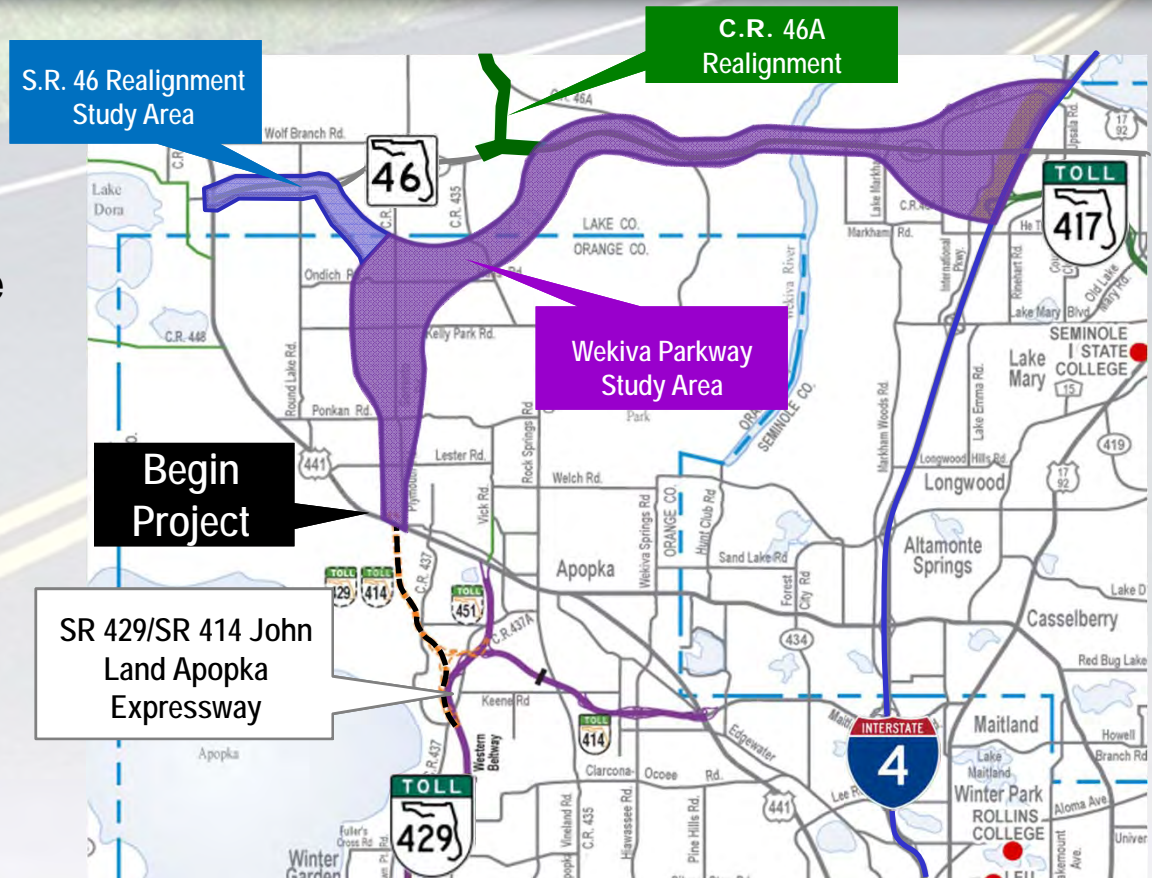
- Approximately 20.9 Miles
- From planned S.R. 429/S.R. 414 interchange to S.R. 417/I-4 interchange

■ **SR 46 Realignment**

- Approximately 4.8 Miles
- From U.S. 441/S.R. 46 interchange to Wekiva Parkway

■ **CR 46A Realignment**

- Approximately 2.72 Miles
- From existing C.R. 46A to existing S.R. 46

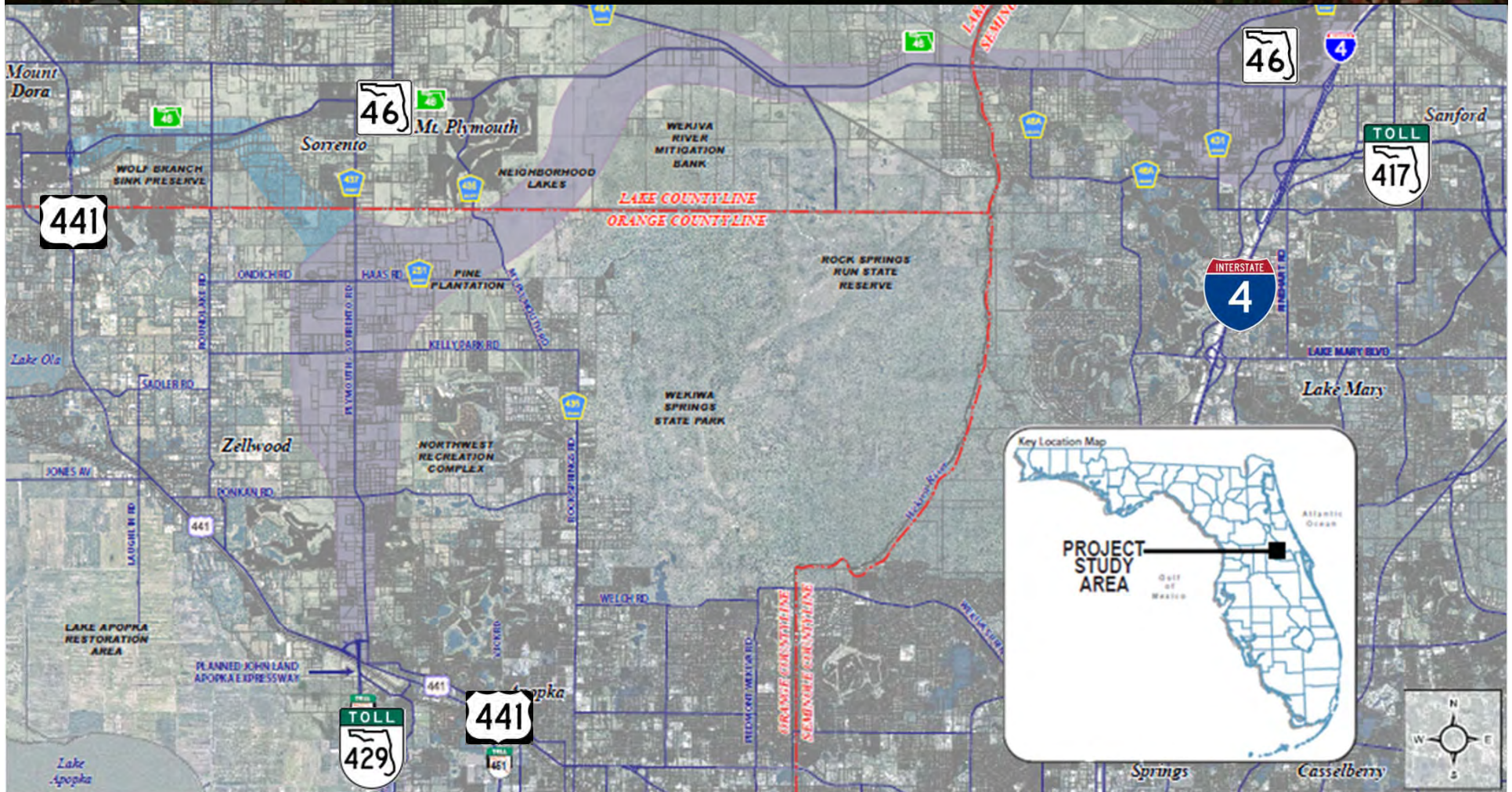




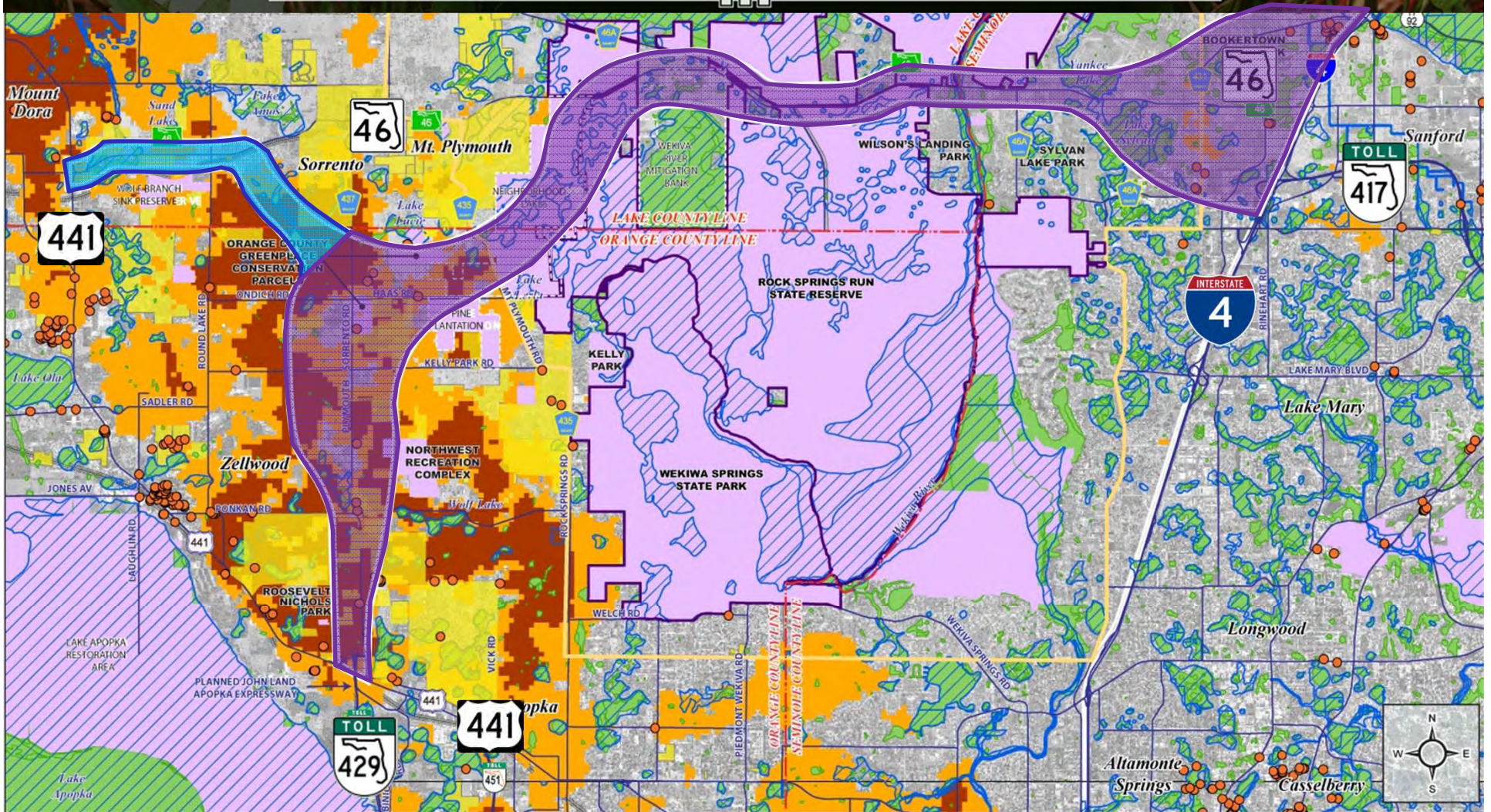
Project Alternatives



Project Location Aerial Map



Constraints Map



LEGEND

- | | | | |
|---|---|----------------------------|-----------------------|
| — Wekiwa Parkway Study Area | Existing and Planned Neighborhoods (Orange and Lake Counties) | ● Potential Historic Sites | ▨ Floodplains |
| Public Conservation/Park & Recreation Lands | Wekiwa River Protection Area | Recharge Rate 12- 20 in/yr | — State Park Boundary |
| | Wetland | Recharge Rate > 20 in/yr | |



Early Alternatives Considered



■ Alternatives Considered

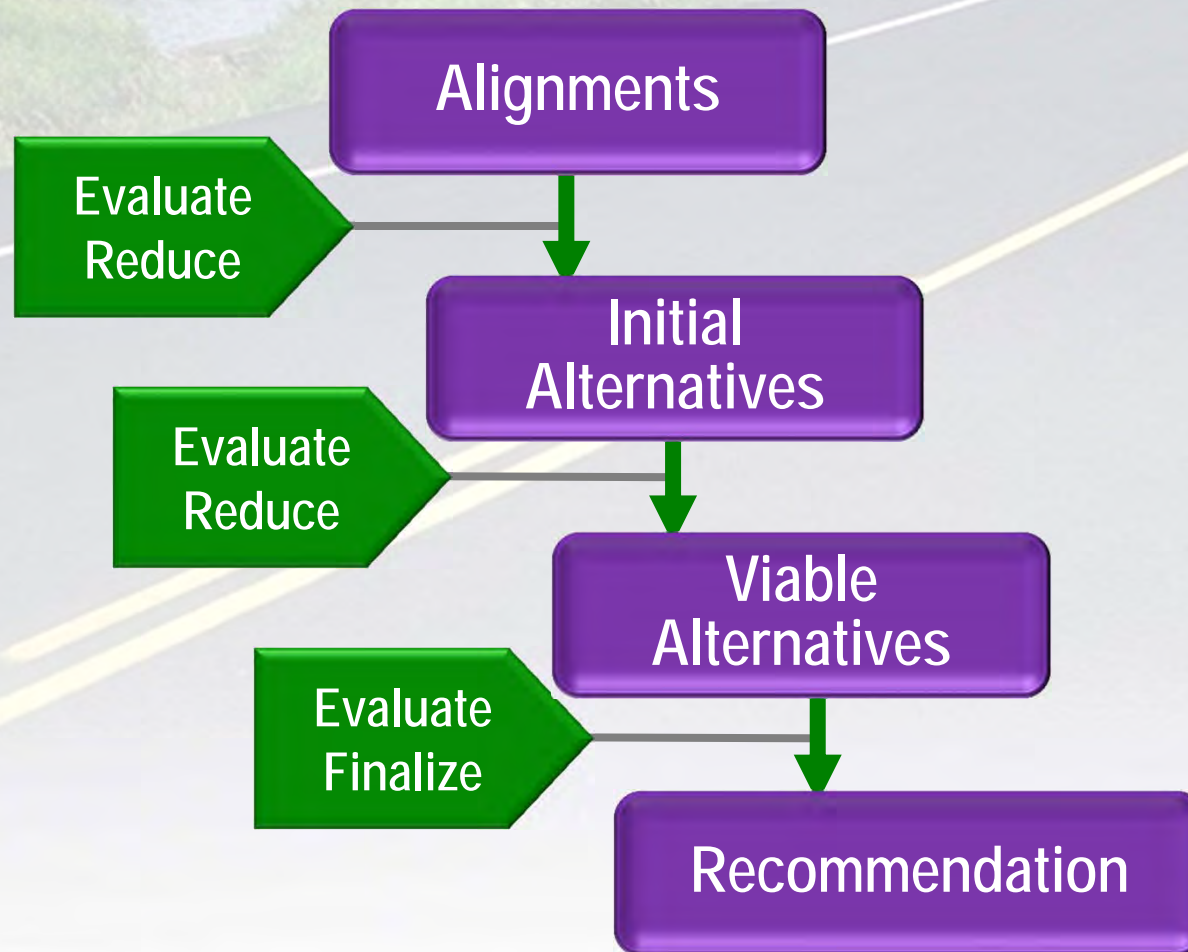
- Signals, intersections and interchange improvements
- Multi-Modal alternatives (bus, rail, transit, etc.)
- S.R. 46 widening

■ Results

- Did not provide adequate transportation capacity
- Did not meet the purpose and need of the project



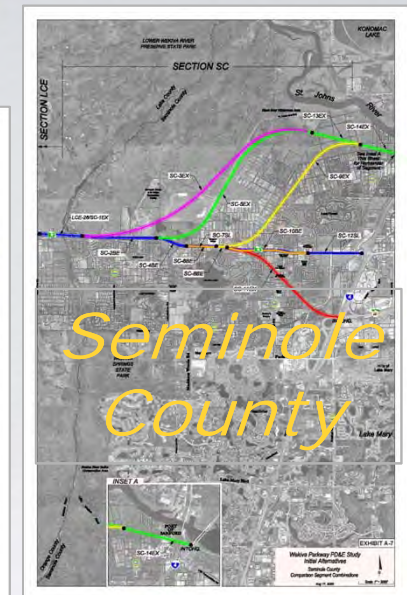
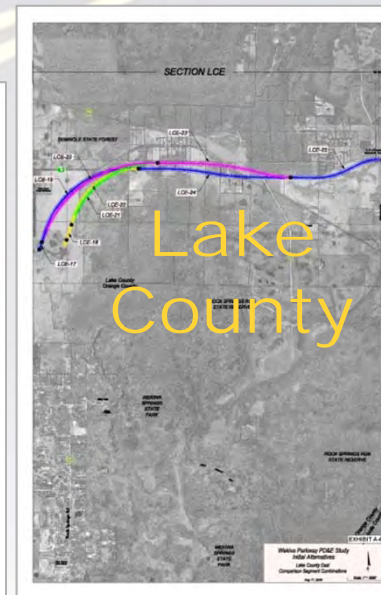
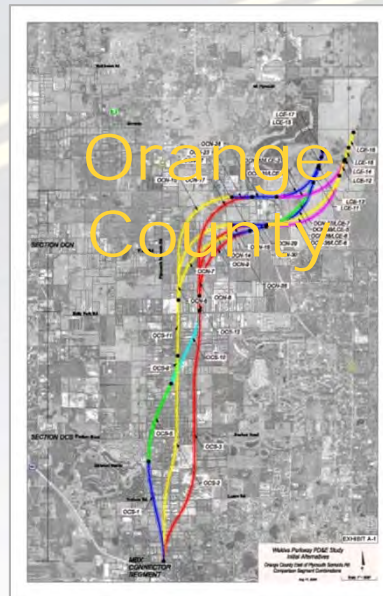
Alternatives Development Process



Alignments

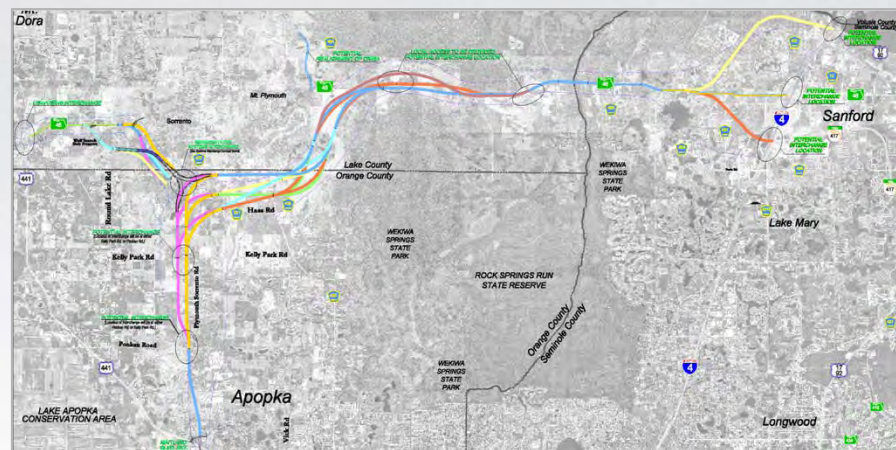
- Identified to minimize and avoid impacts to environmentally sensitive areas

- 52 in Orange County
- 10 in Lake County
- 6 in Seminole County



Initial Alternatives (2005)

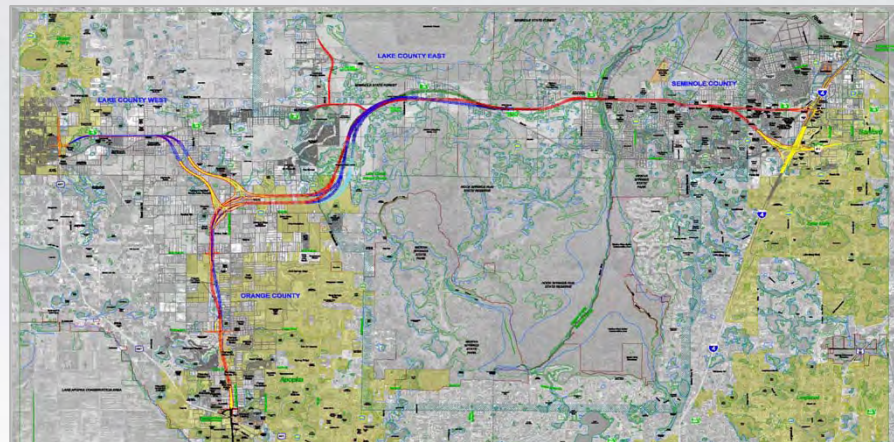
- Initial Alternatives Public Workshops in November 2005
- Based on public and agency input, Initial Alternatives were refined to identify Viable Alternatives



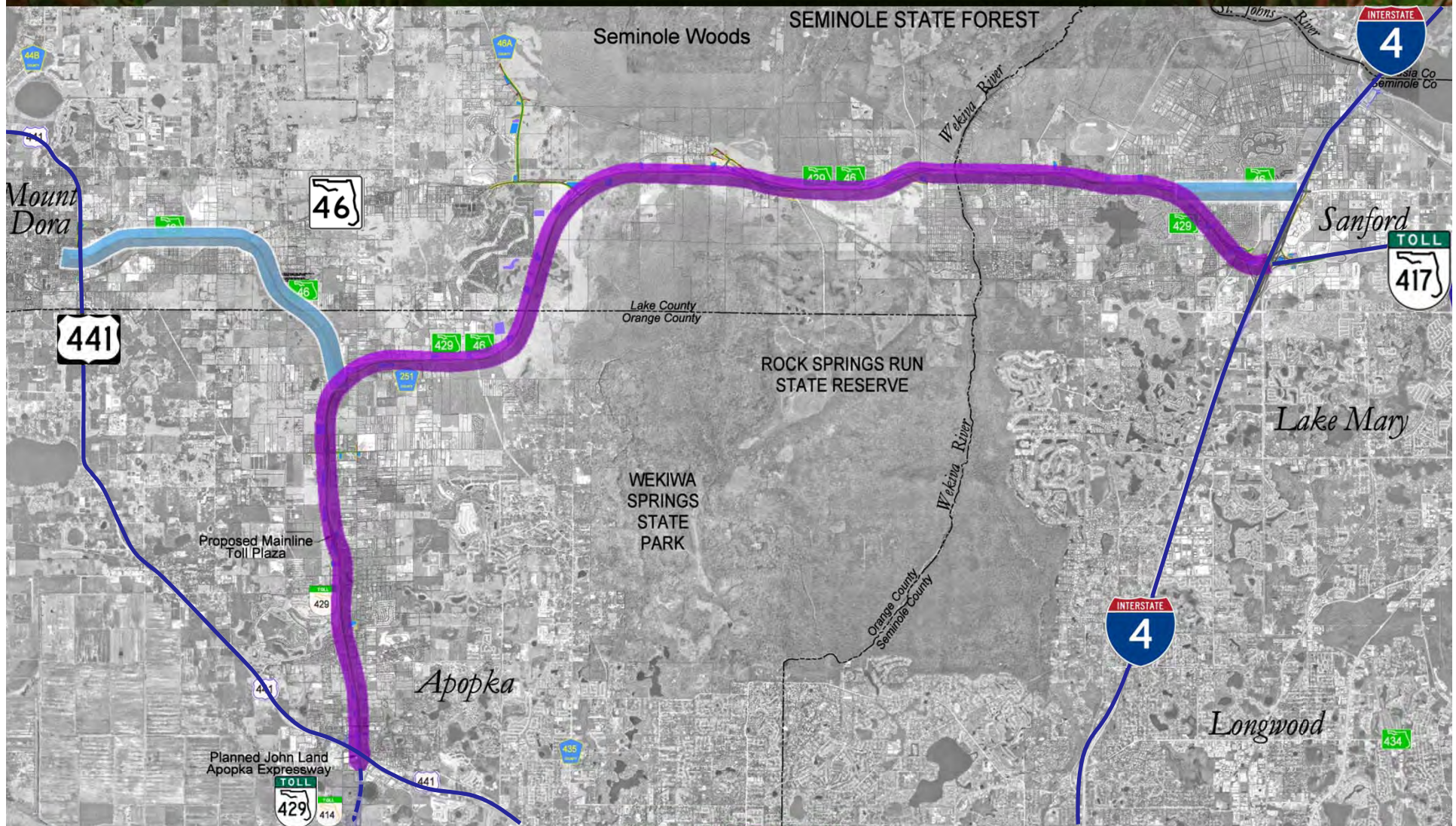
Viabale Alternatives (2006)



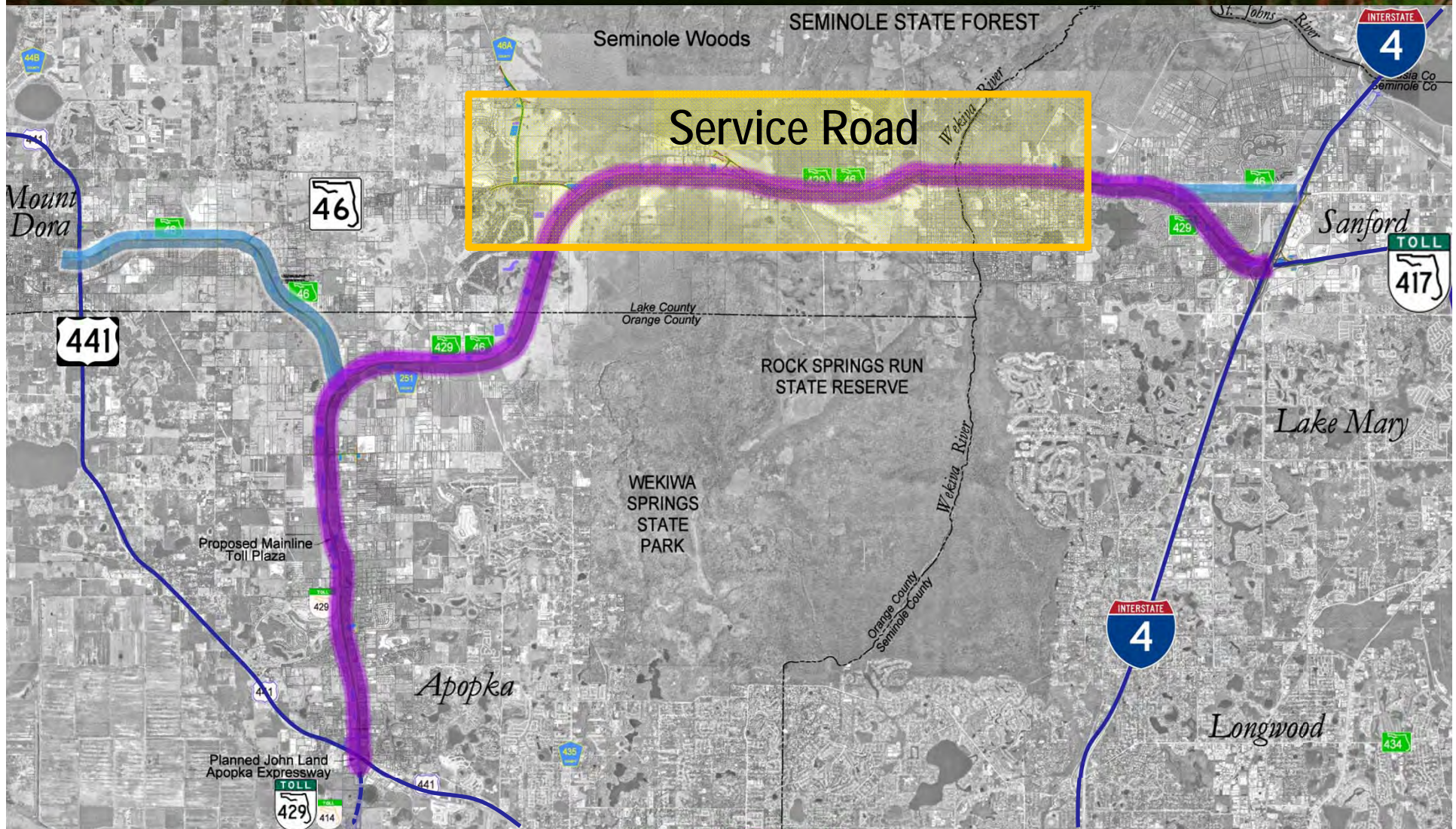
- **Viabale Alternatives Public Workshops in July and August 2006**
- **Resulted in development of refined alternatives based on stakeholders input**



Proposed Build Alternative (2007)

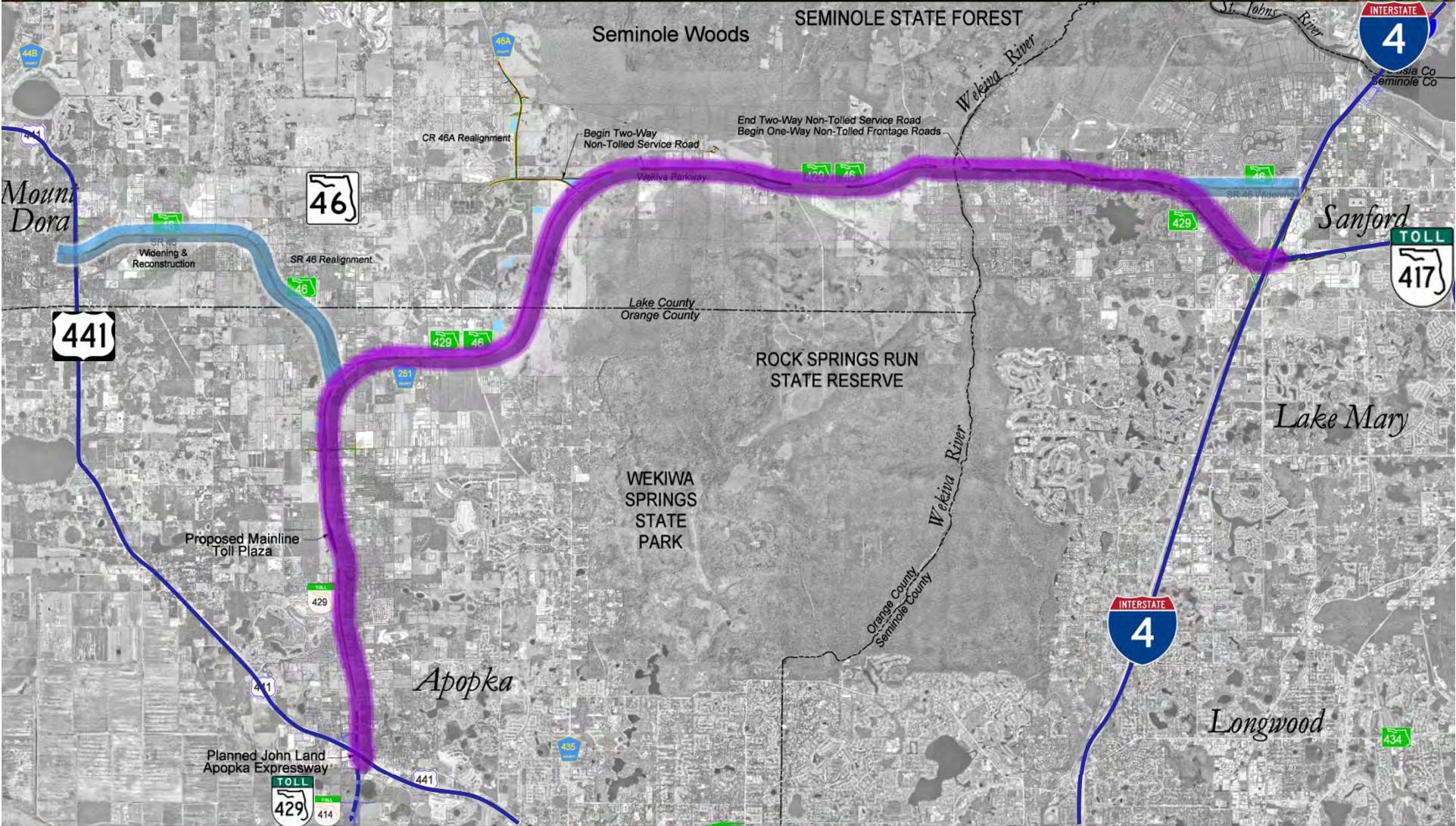


Proposed Build Alternative (2008-2009)



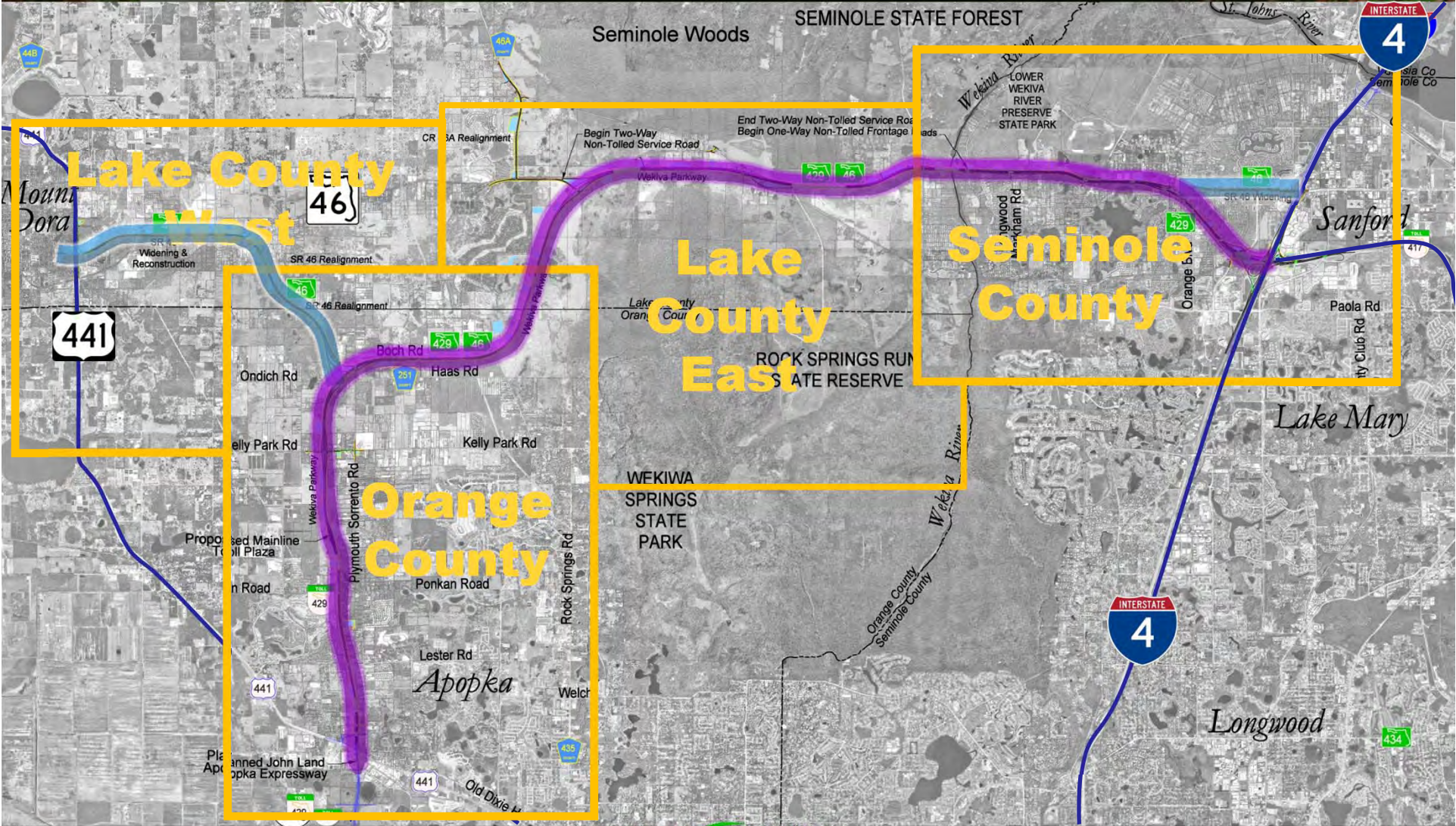


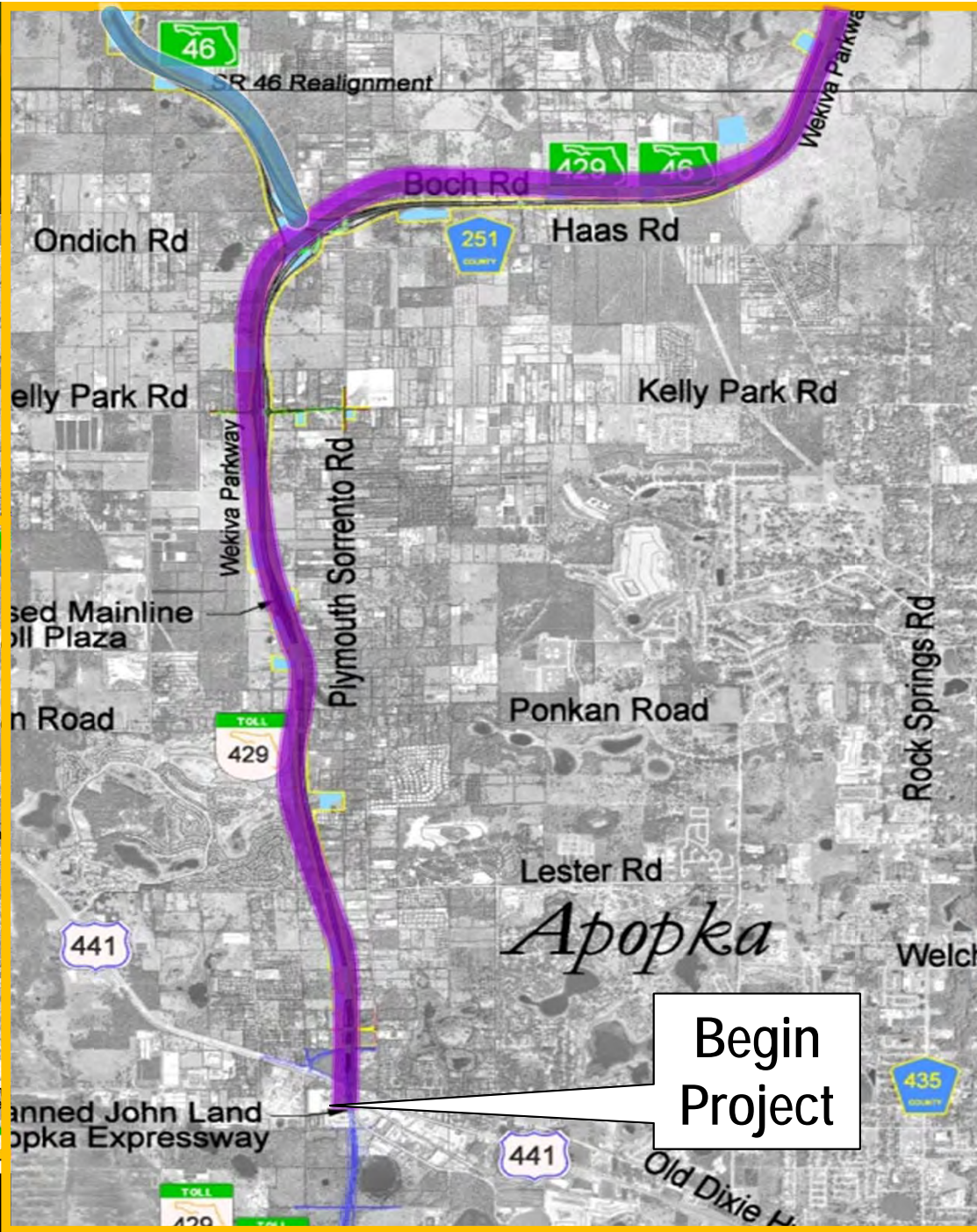
Proposed Build Alternative (2010)





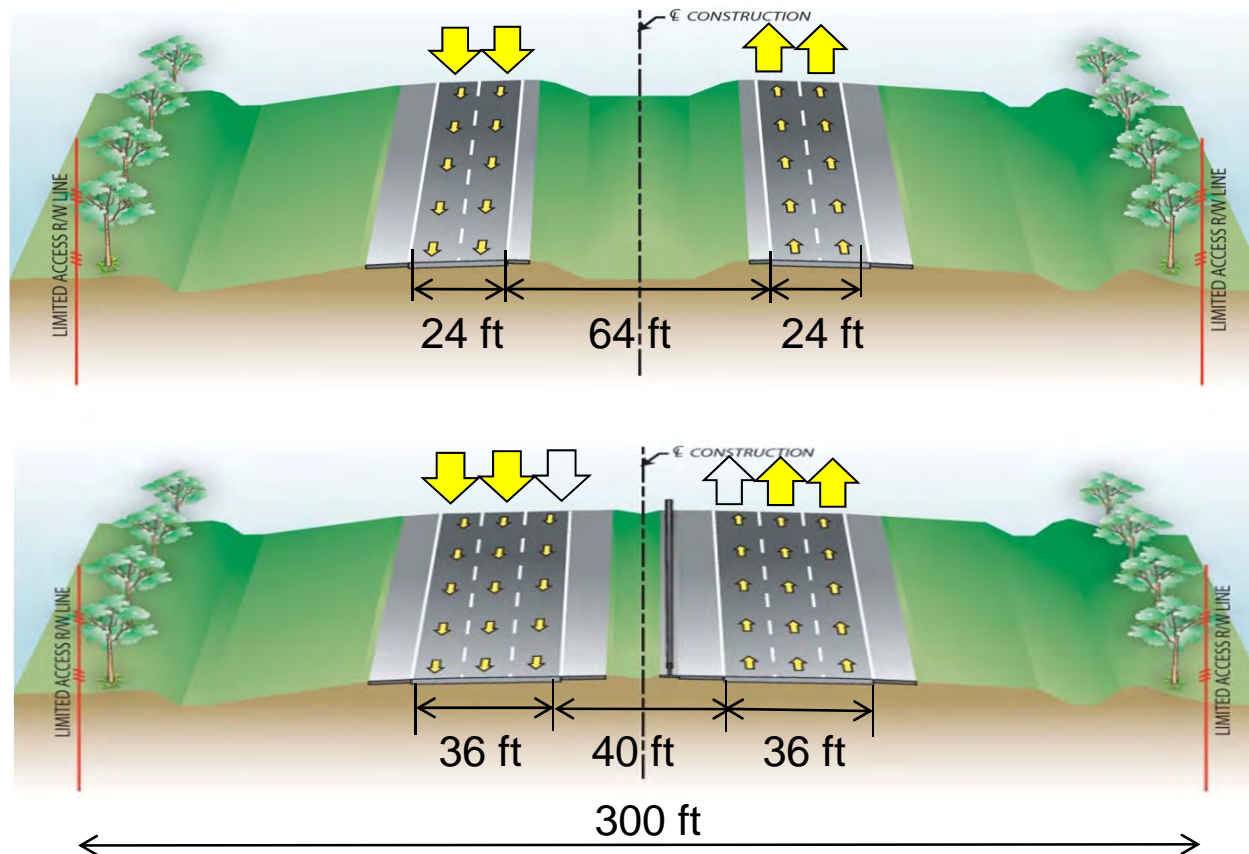
Study Area Segments





Wekiva Parkway

From U.S.441 north to Lake County



**4-Lane Expressway
Initially**

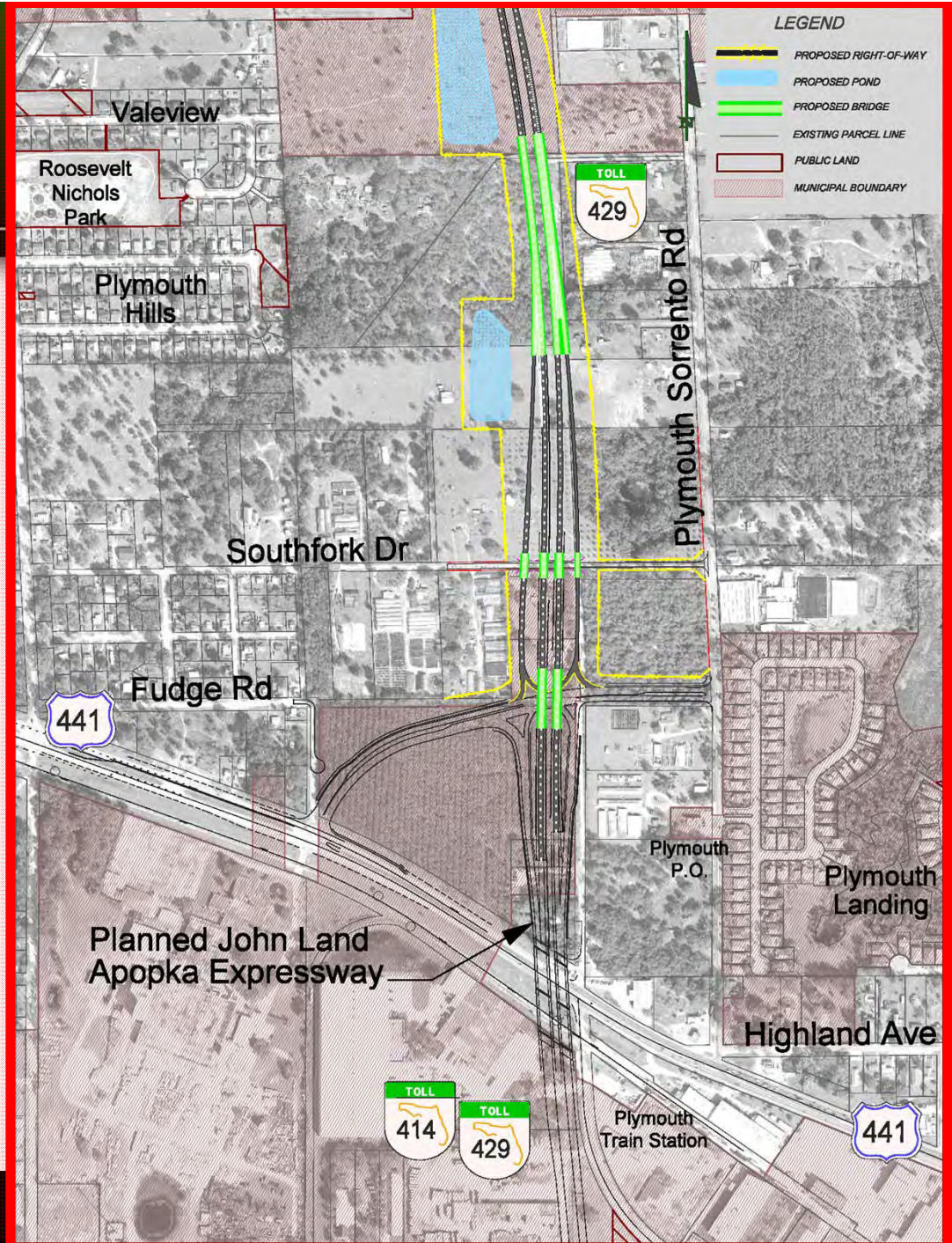
**Future
6-Lane Expressway
when needed**



Orange County

Wekiva Parkway

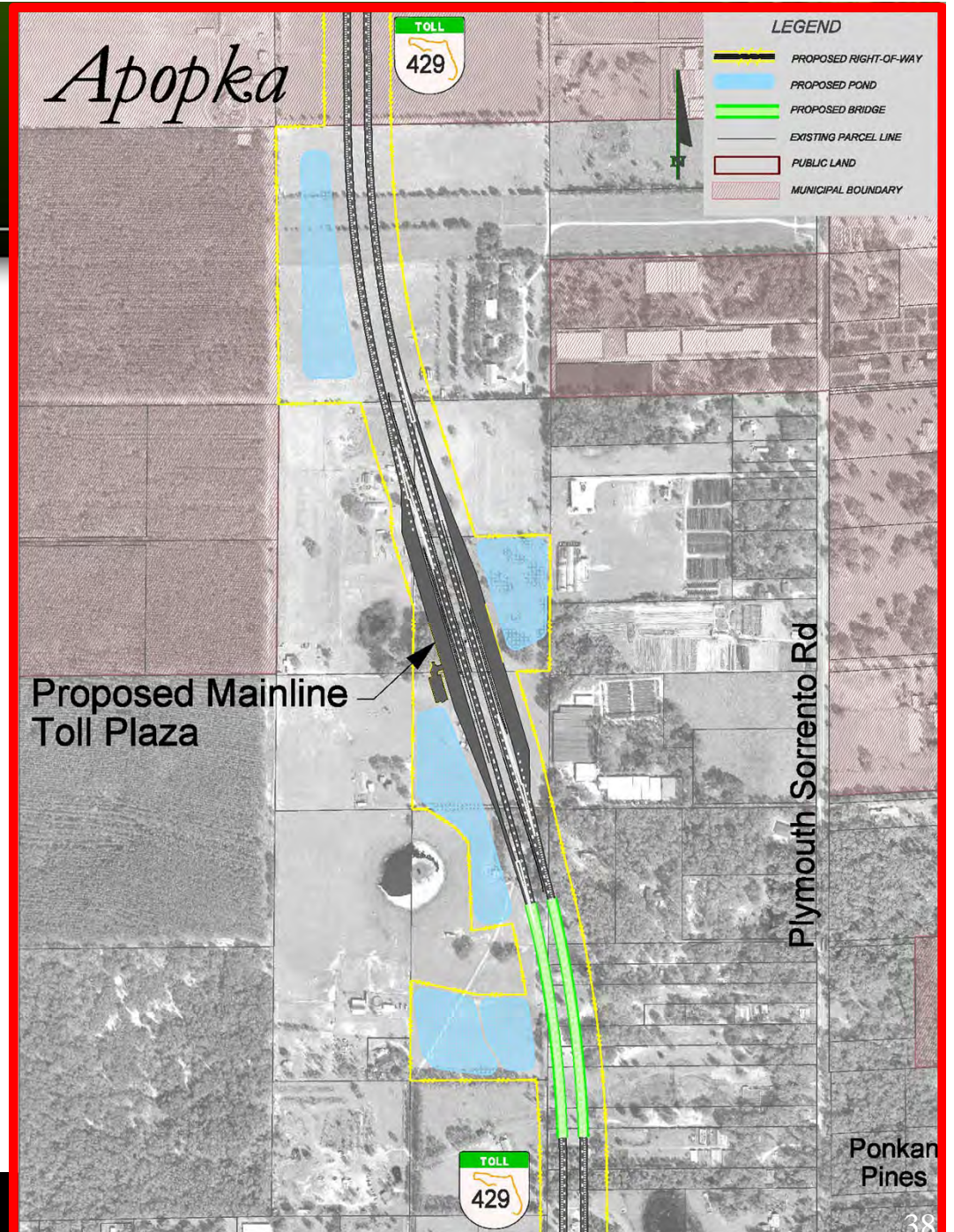
U.S. 441 Interchange in Apopka



Orange County

Wekiva Parkway

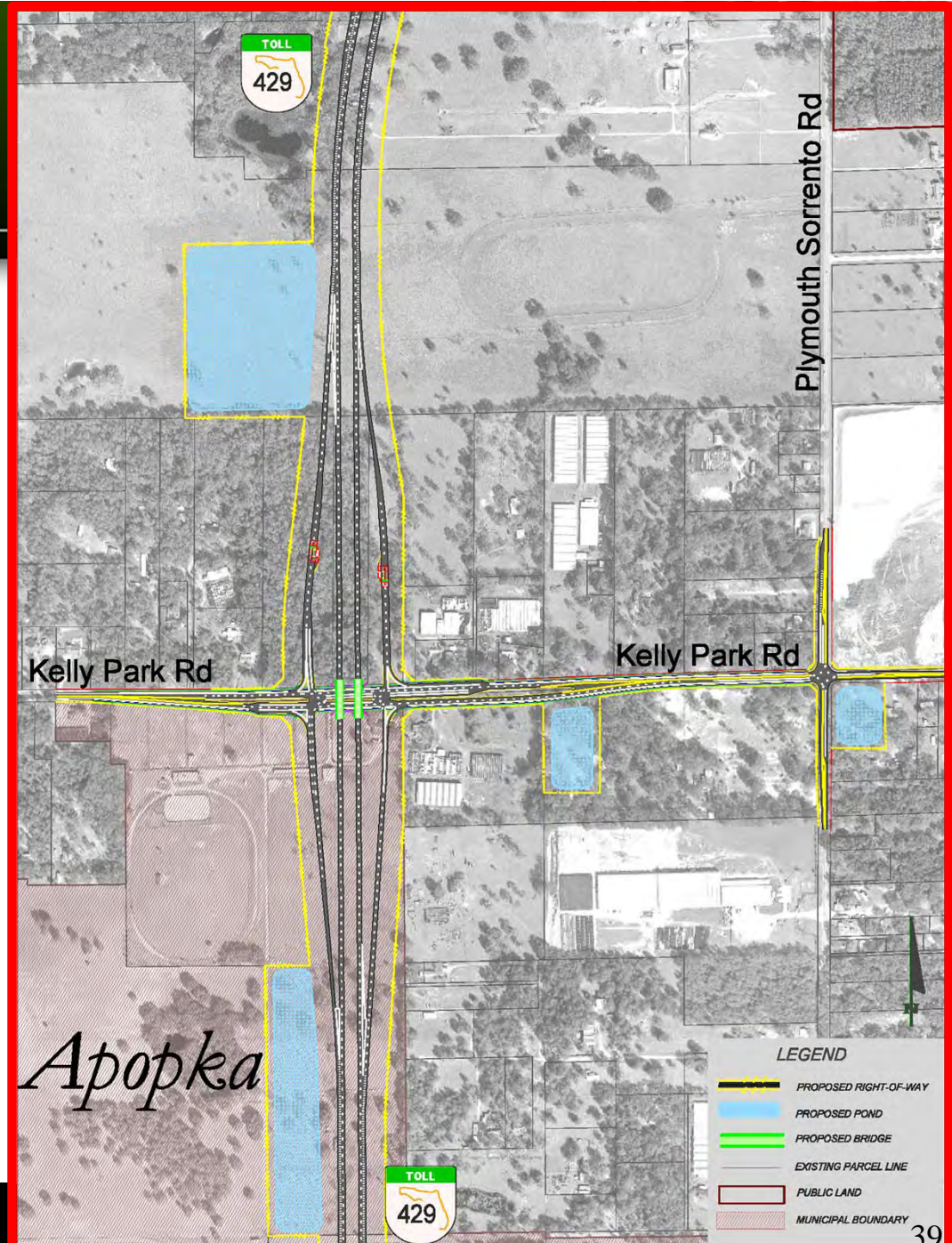
Mainline Toll Plaza



Orange County

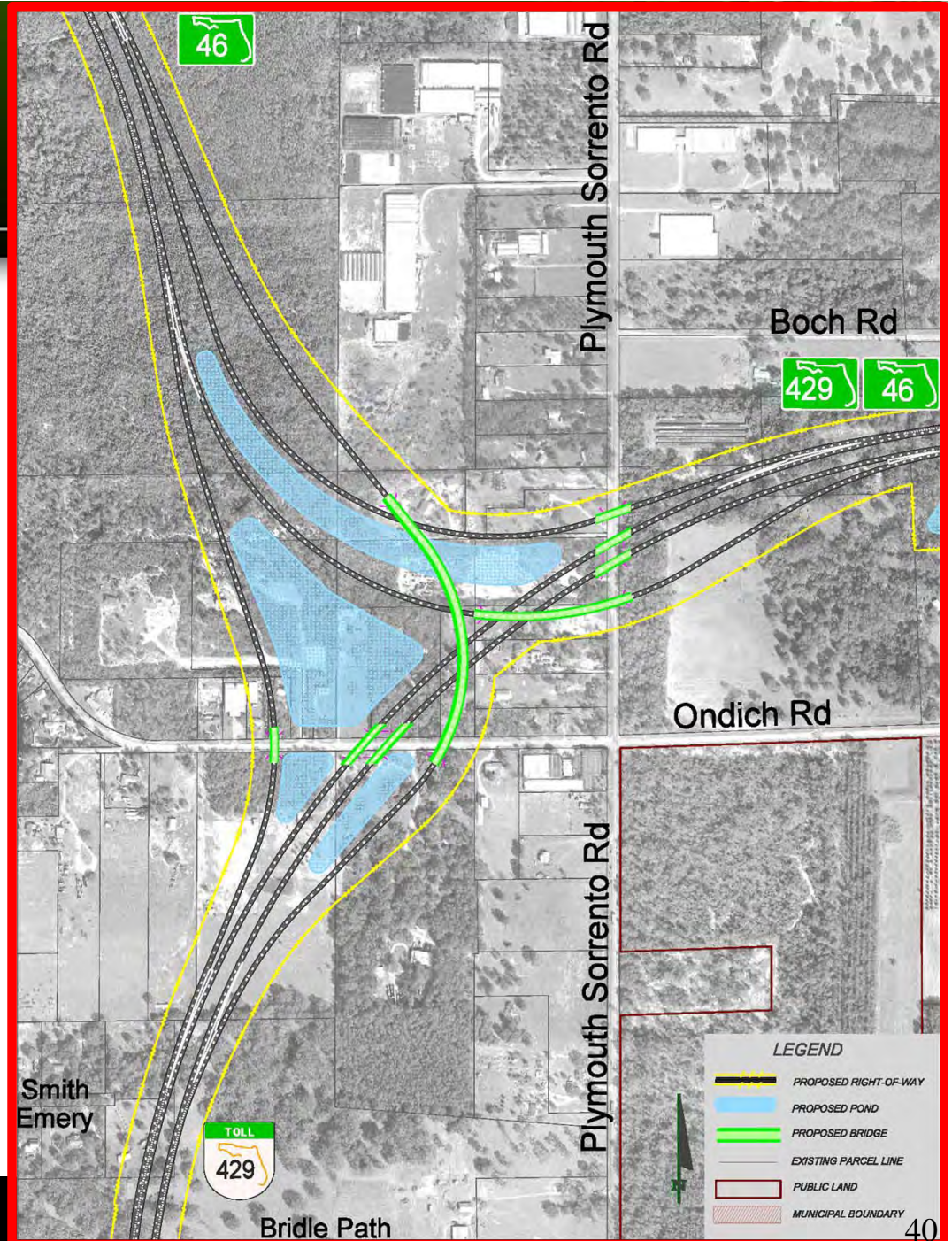
Wekiva Parkway

Kelly Park Rd Interchange

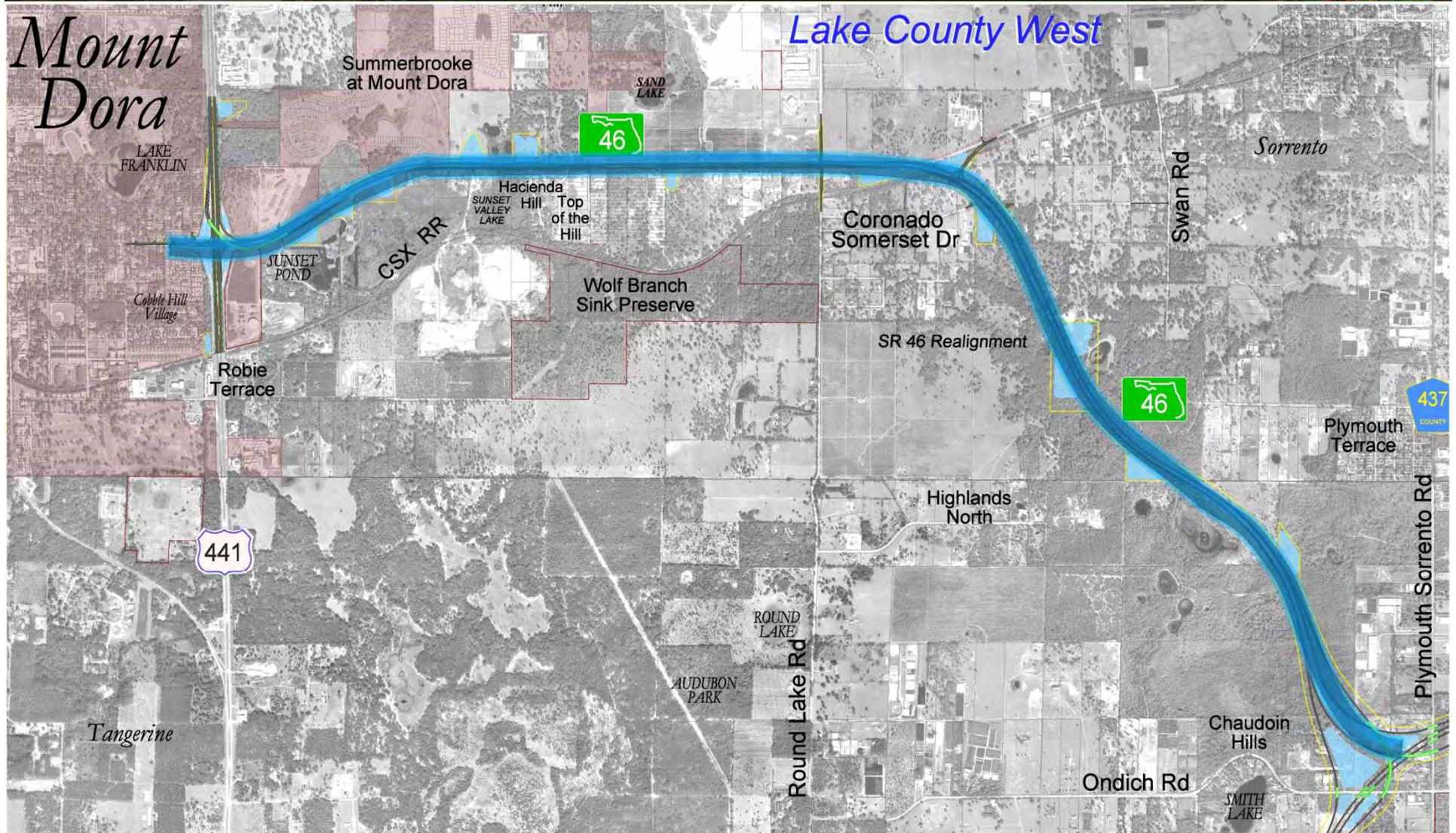


Orange County Wekiva Parkway

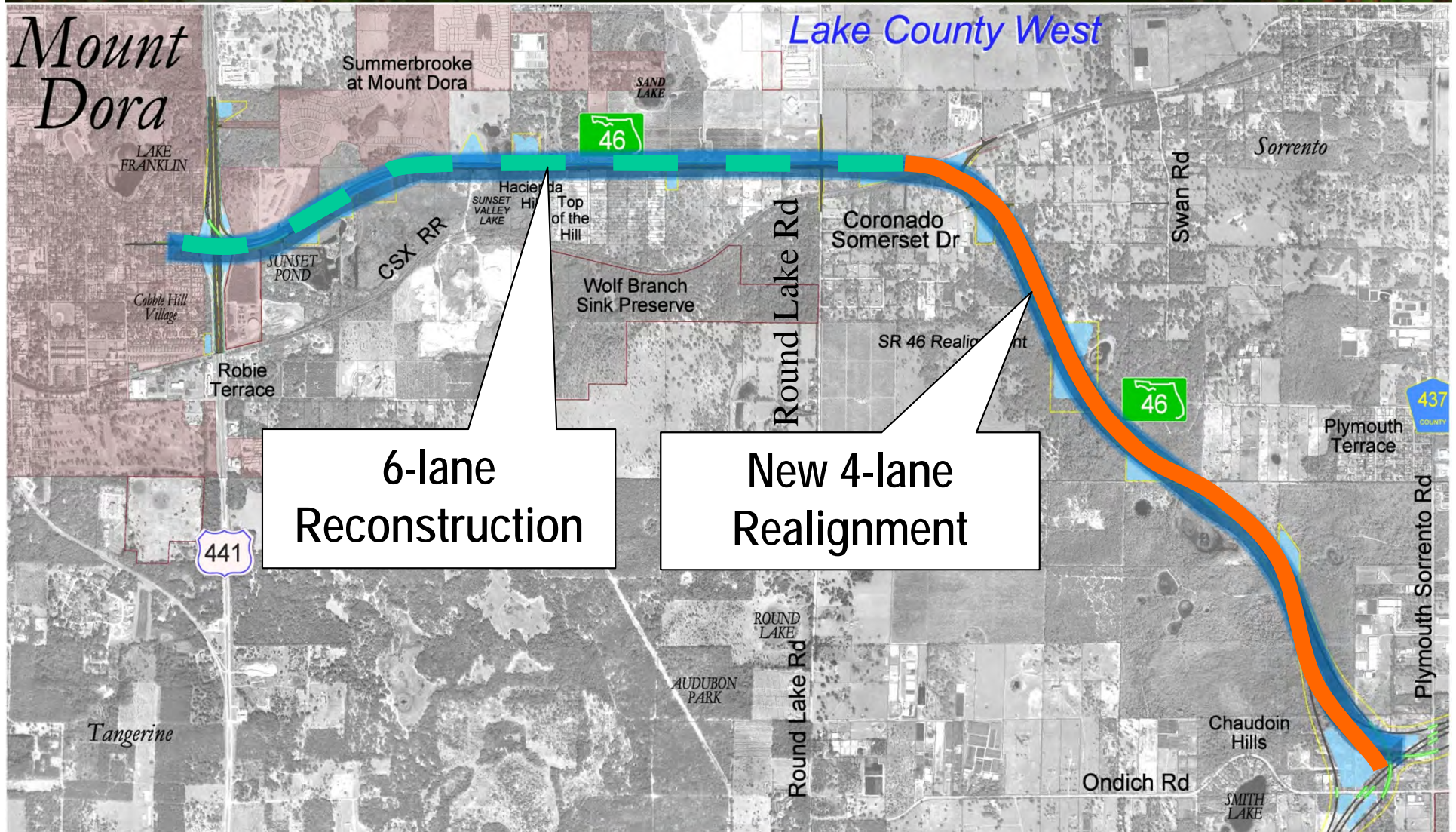
Systems Interchange



Lake County West

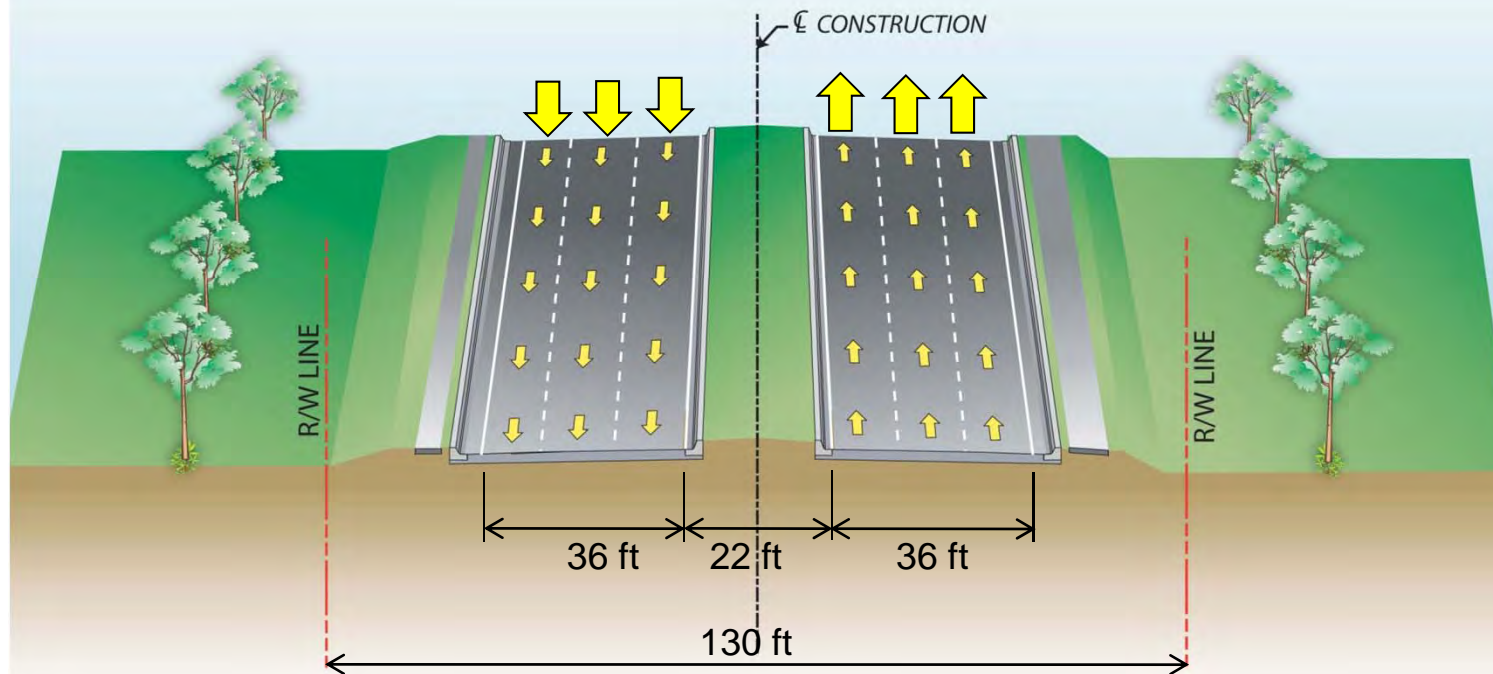


S.R. 46 Reconstruction and Realignment



S.R. 46 Reconstruction

From U.S. 441 to east of Round Lake Road

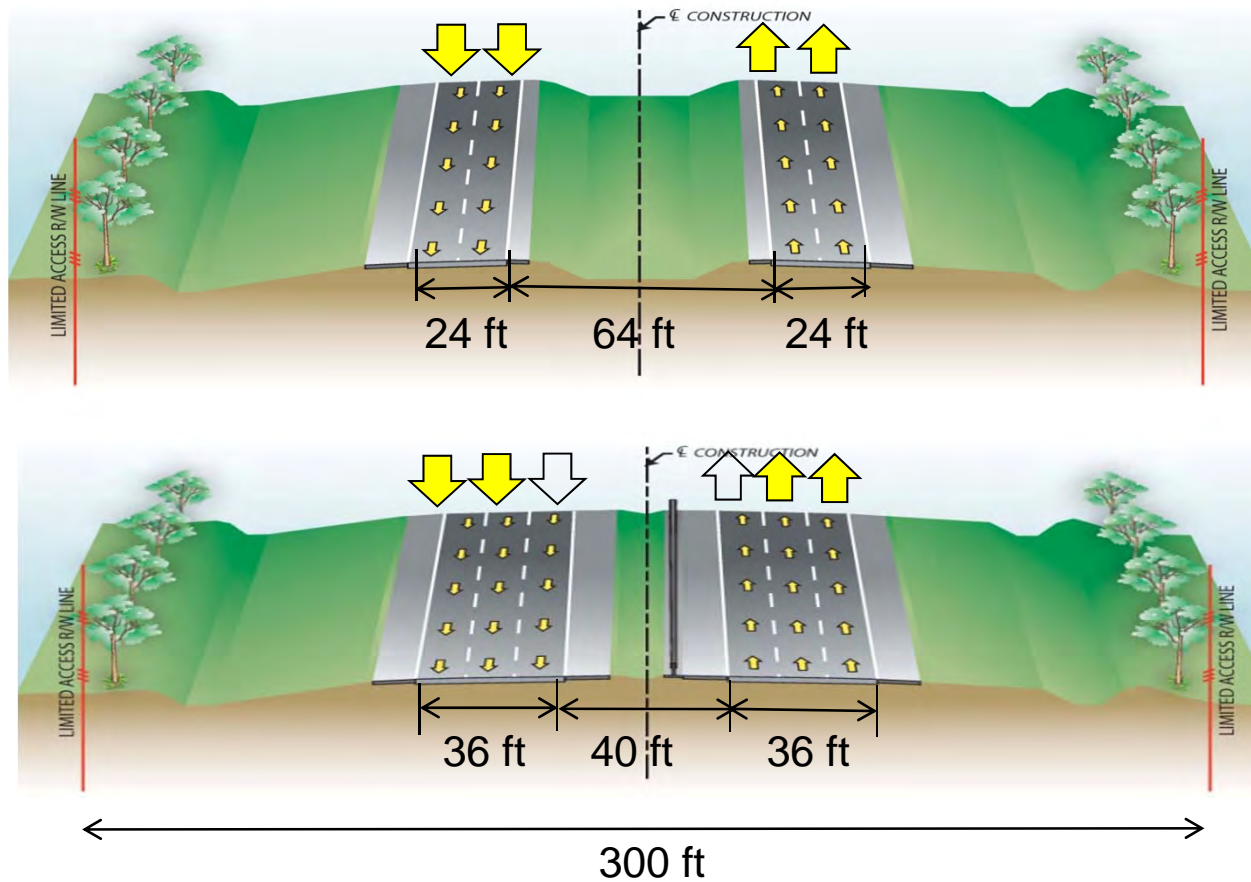


**6-Lane Roadway
Controlled Access**



S.R. 46 Realignment

From east of Round Lake Road to Systems Interchange



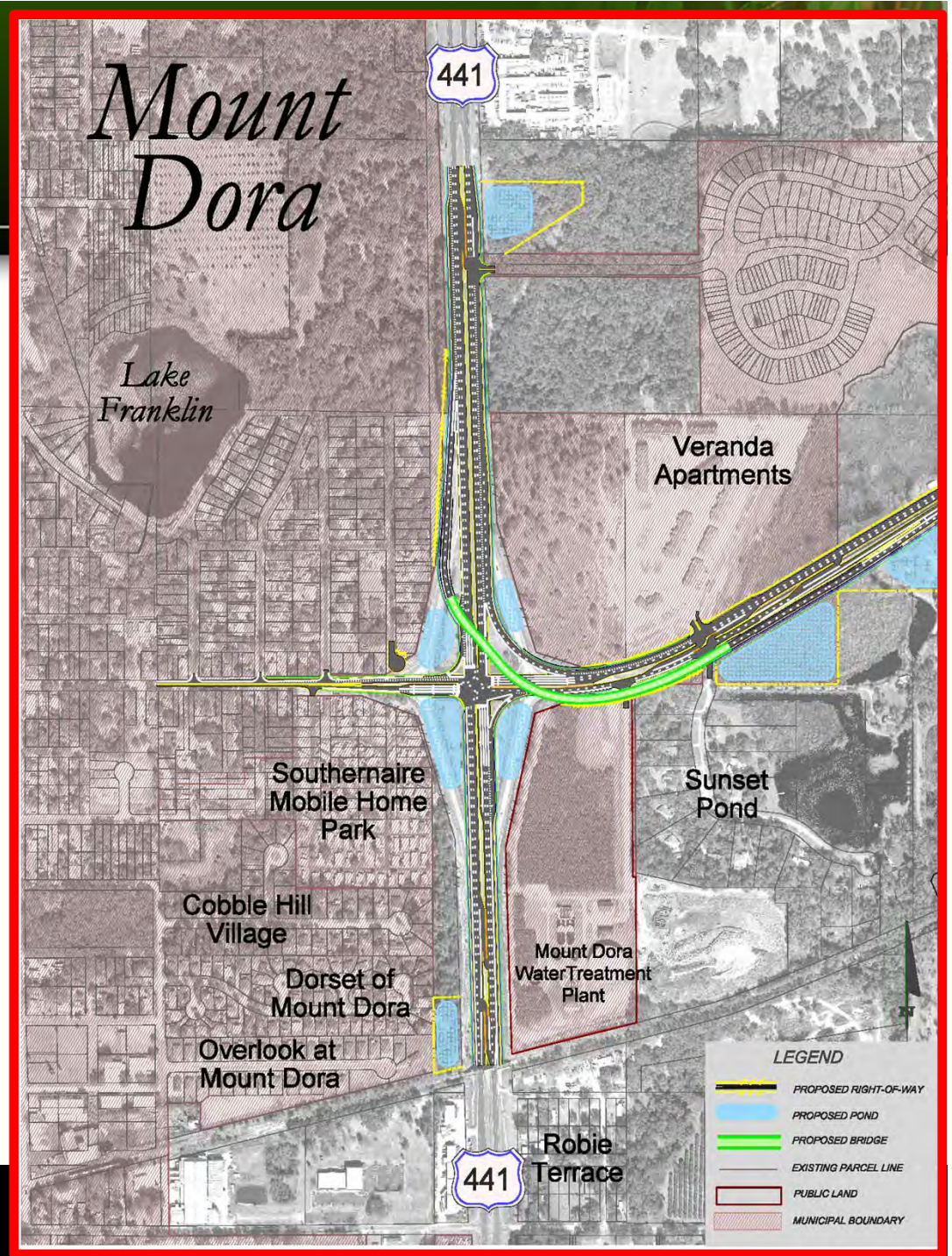
**4-Lane Expressway
Initially**

**Future
6-Lane Expressway
when needed**



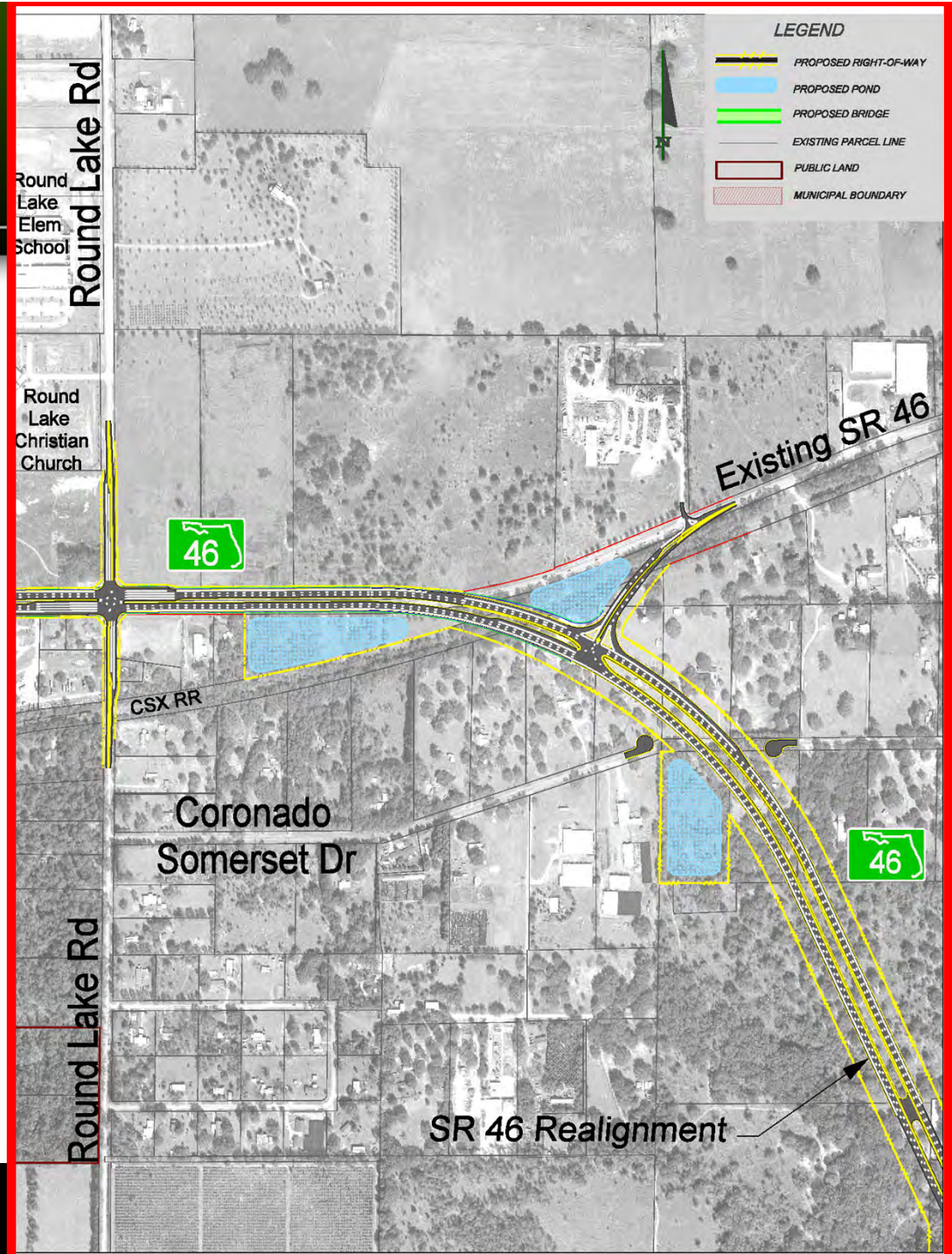
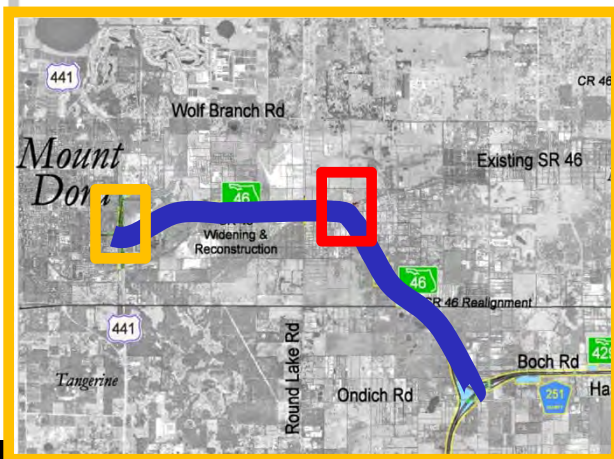
Lake County West
S.R. 46

U.S. 441 Interchange in Mount Dora

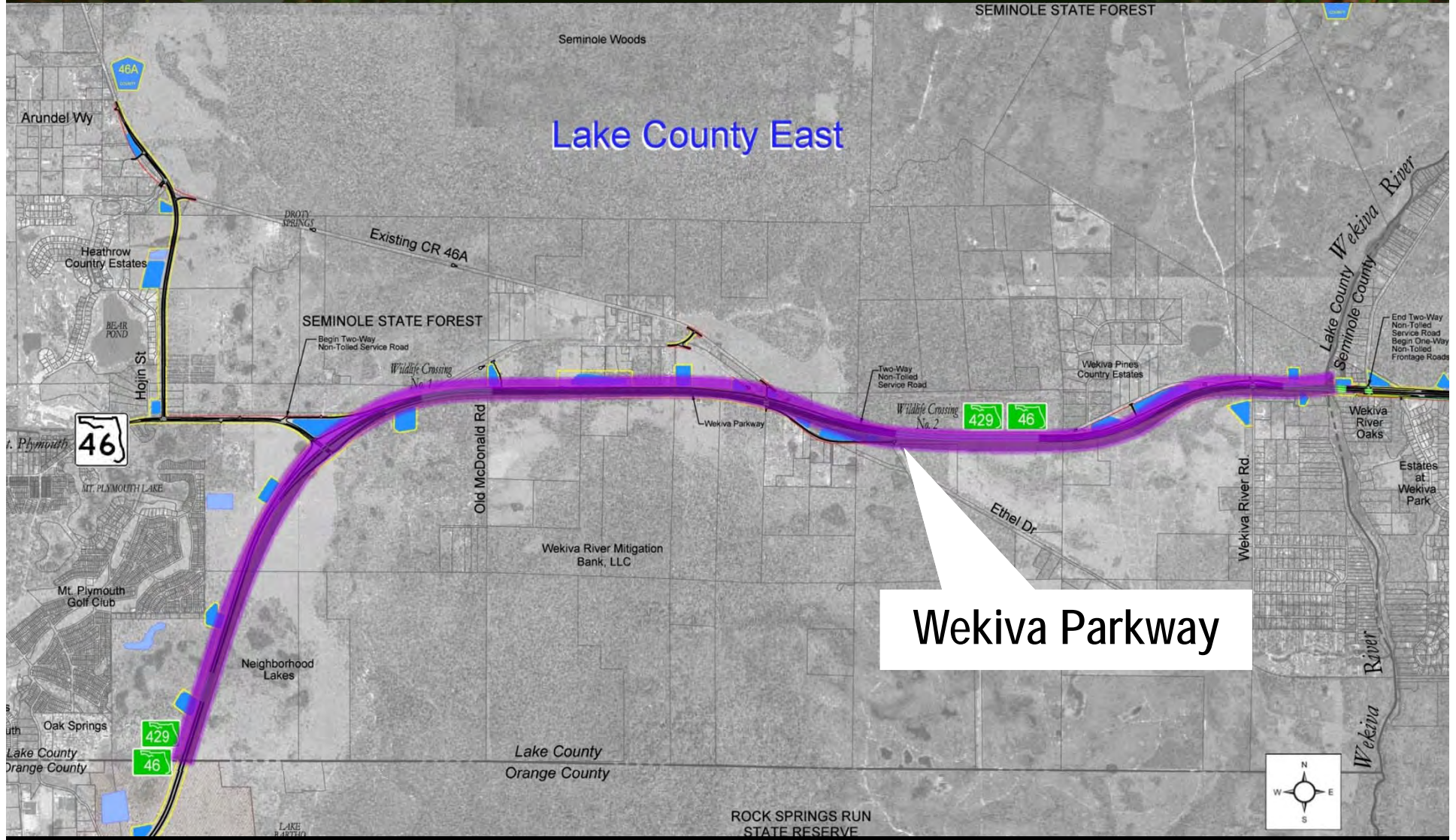


Lake County West S.R. 46

Transition East of Round Lake Road

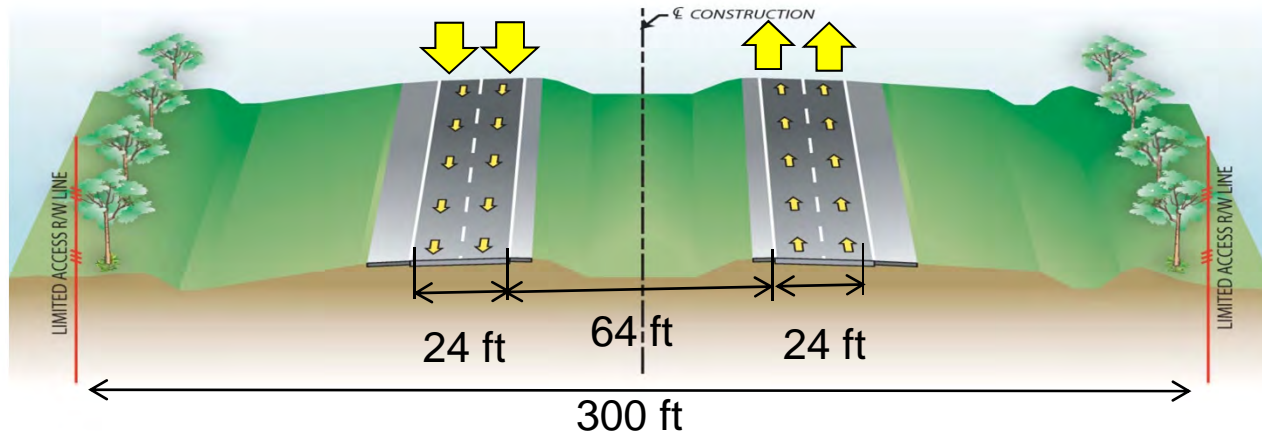


Lake County East



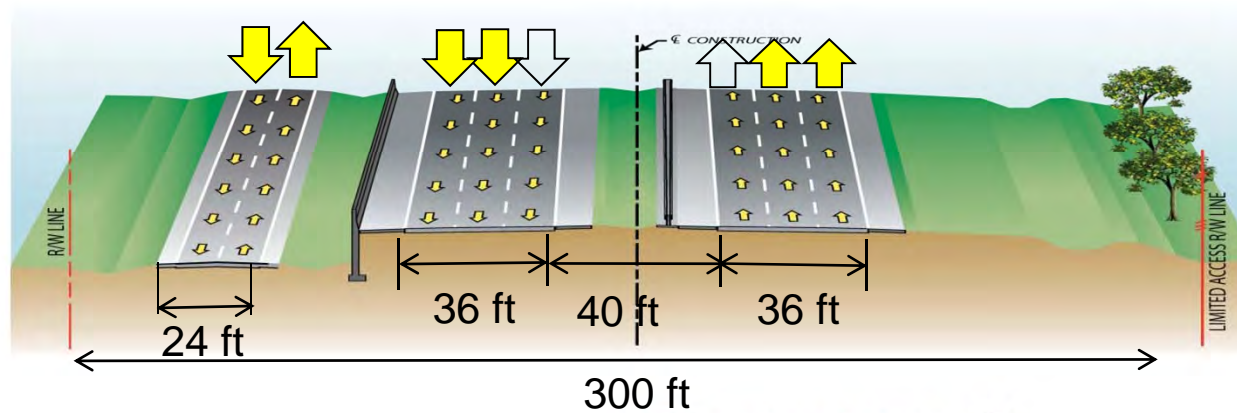
Wekiva Parkway

From Orange County to Neighborhood Lakes Interchange



**4-Lane Expressway
Initially
(Expandable to 6-
Lanes when needed)**

From Neighborhood Lakes Interchange to east of Wekiva River

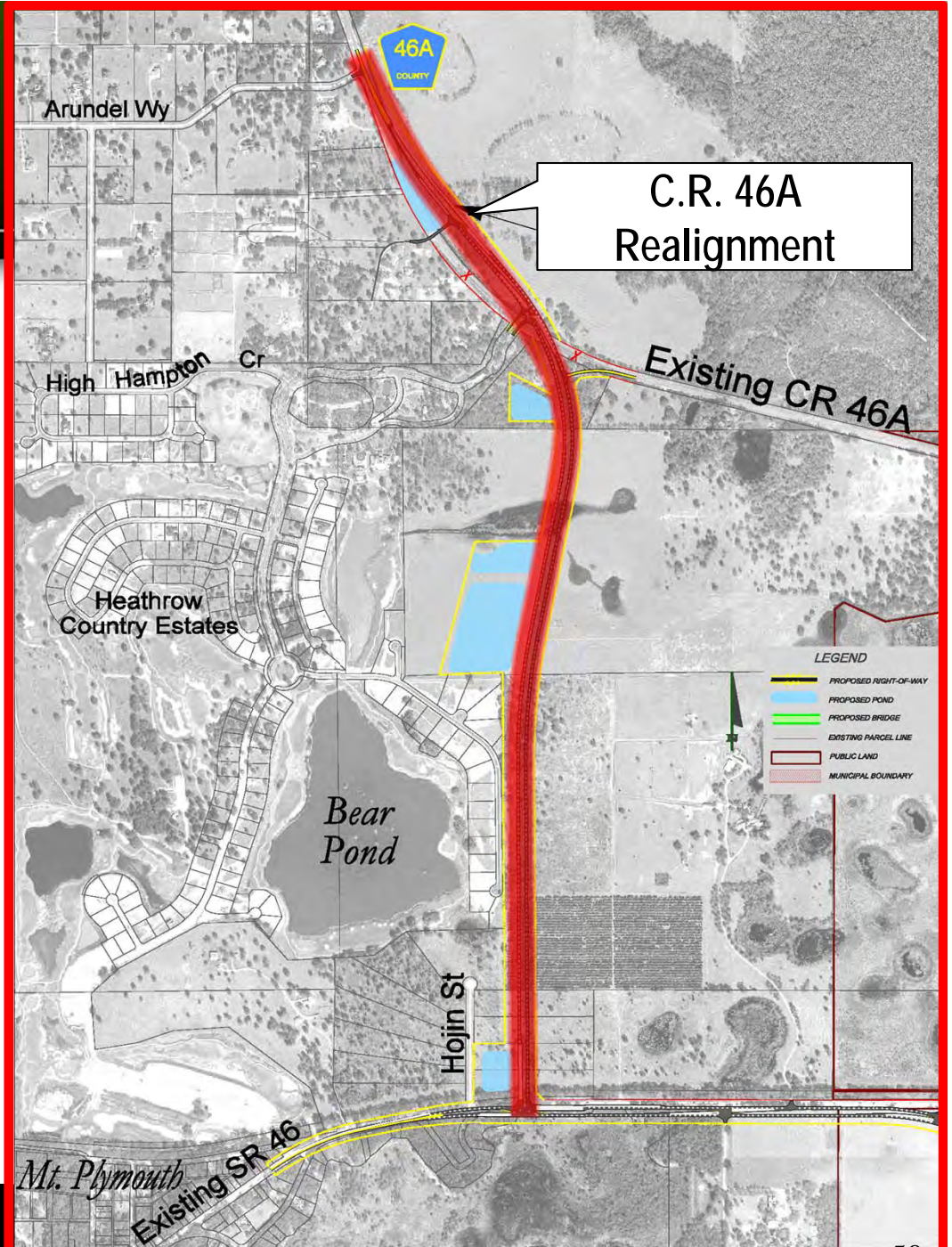
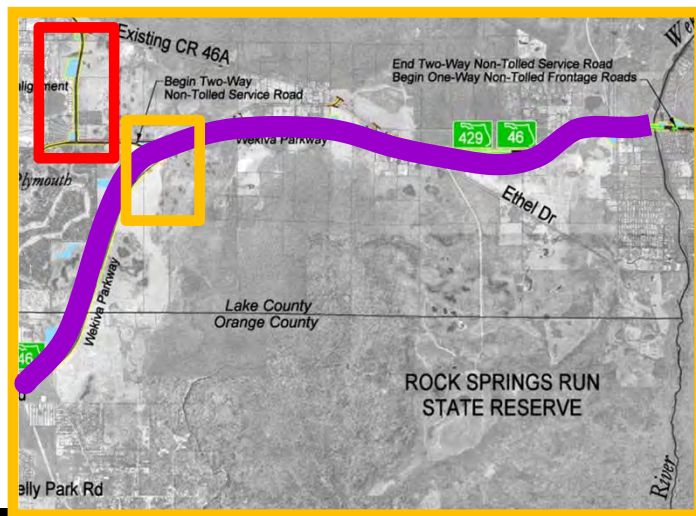


**4-Lane
Expressway with
Service Road
(Expandable to
6-Lanes)**



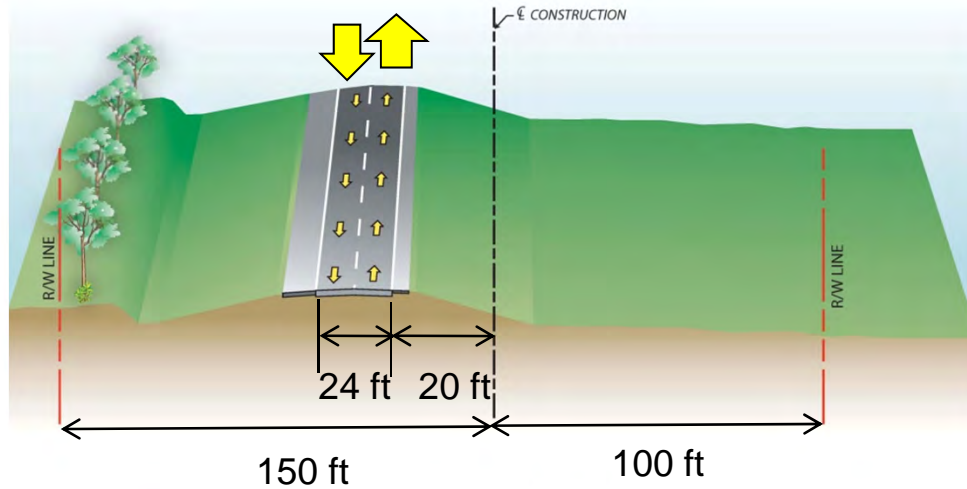
Lake County East

C.R. 46A

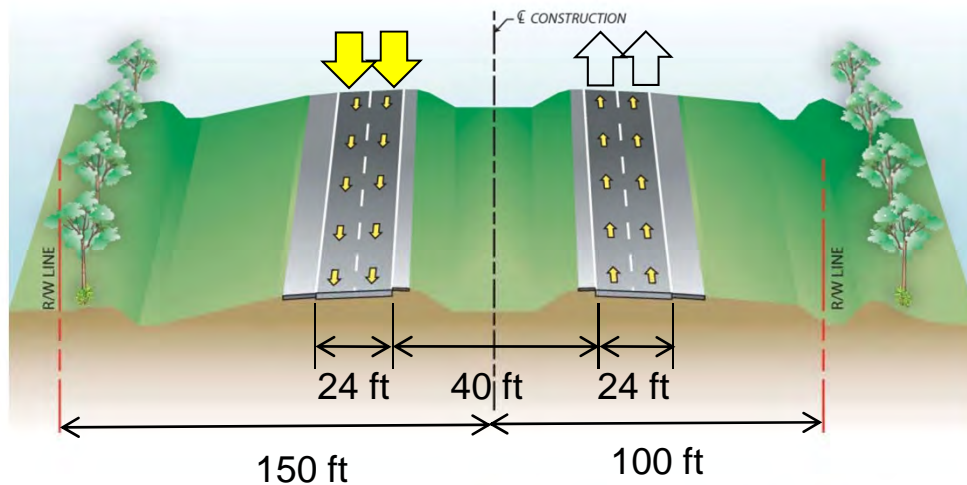


C.R. 46A Realignment

From S.R. 46 to Arundel Way



**2-Lane Rural Section
Initially**



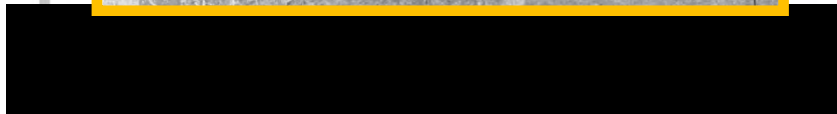
**Future
4-Lane Rural Section
if needed**





Lake County East

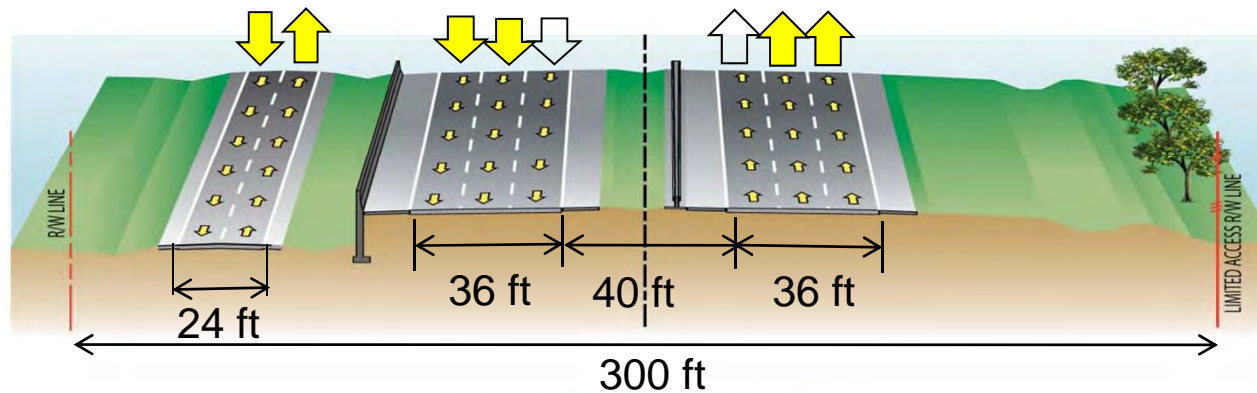
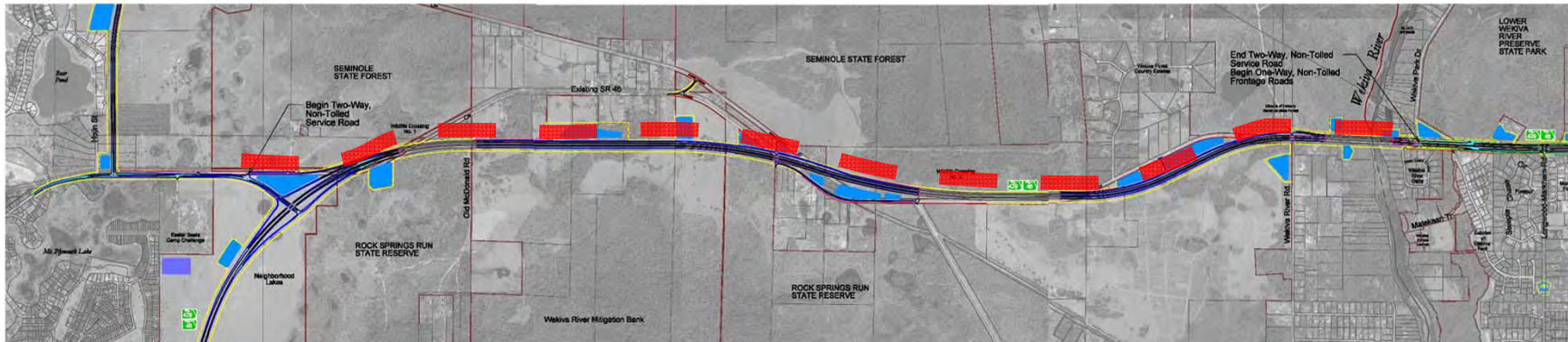
S.R. 46



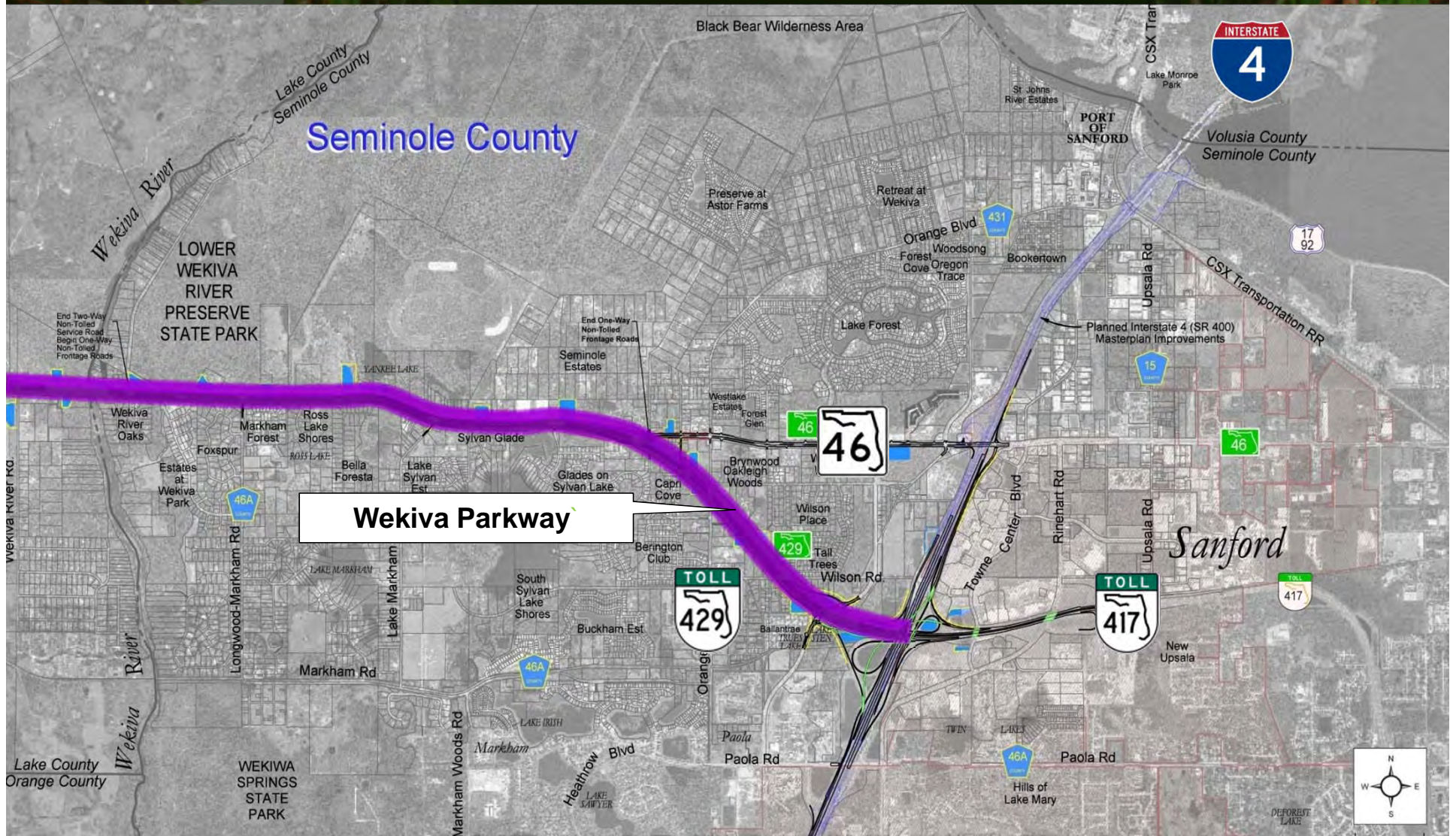
Service Road

From Neighborhood Lakes Interchange to East of Wekiva River

Along North Side of Wekiva Parkway

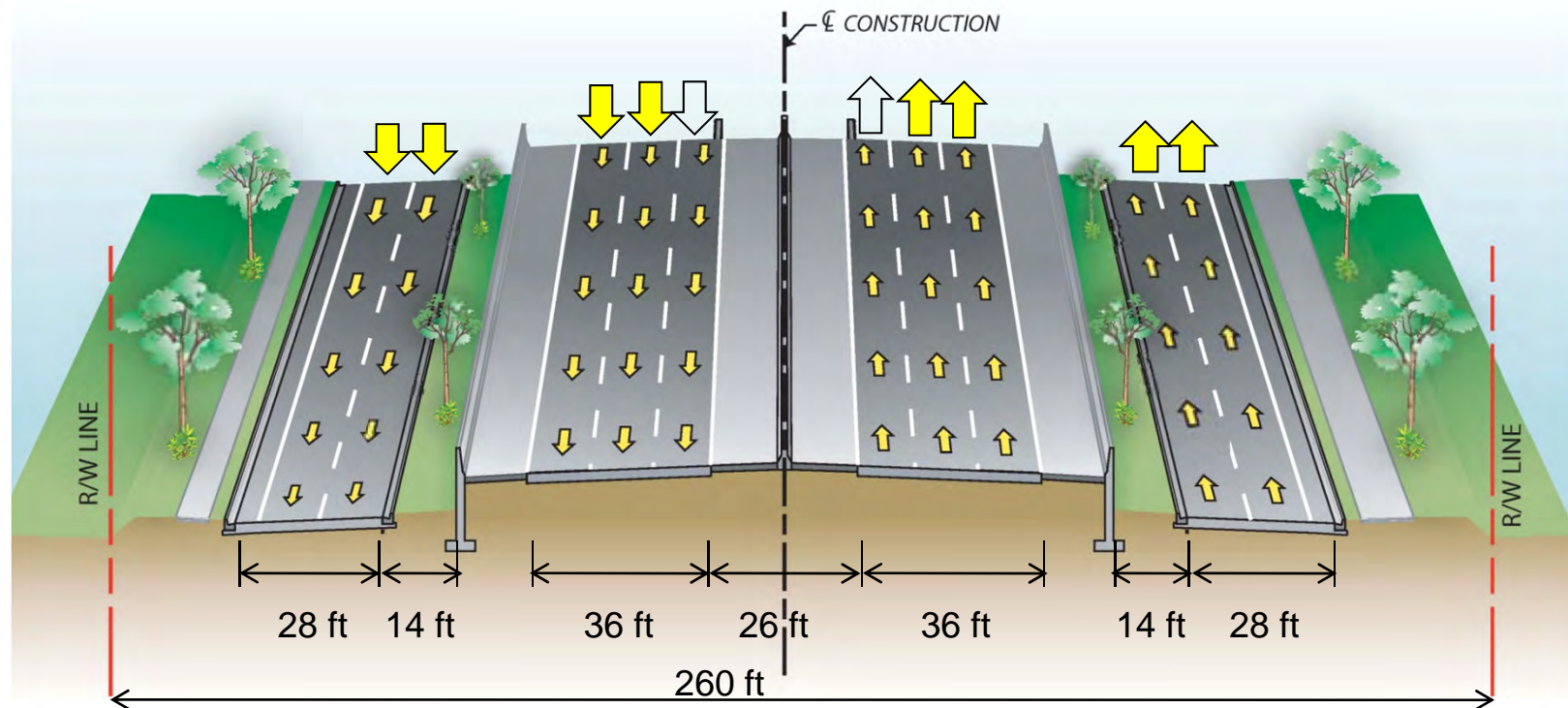


Seminole County



Wekiva Parkway

From Wekiva River to West of Orange Boulevard

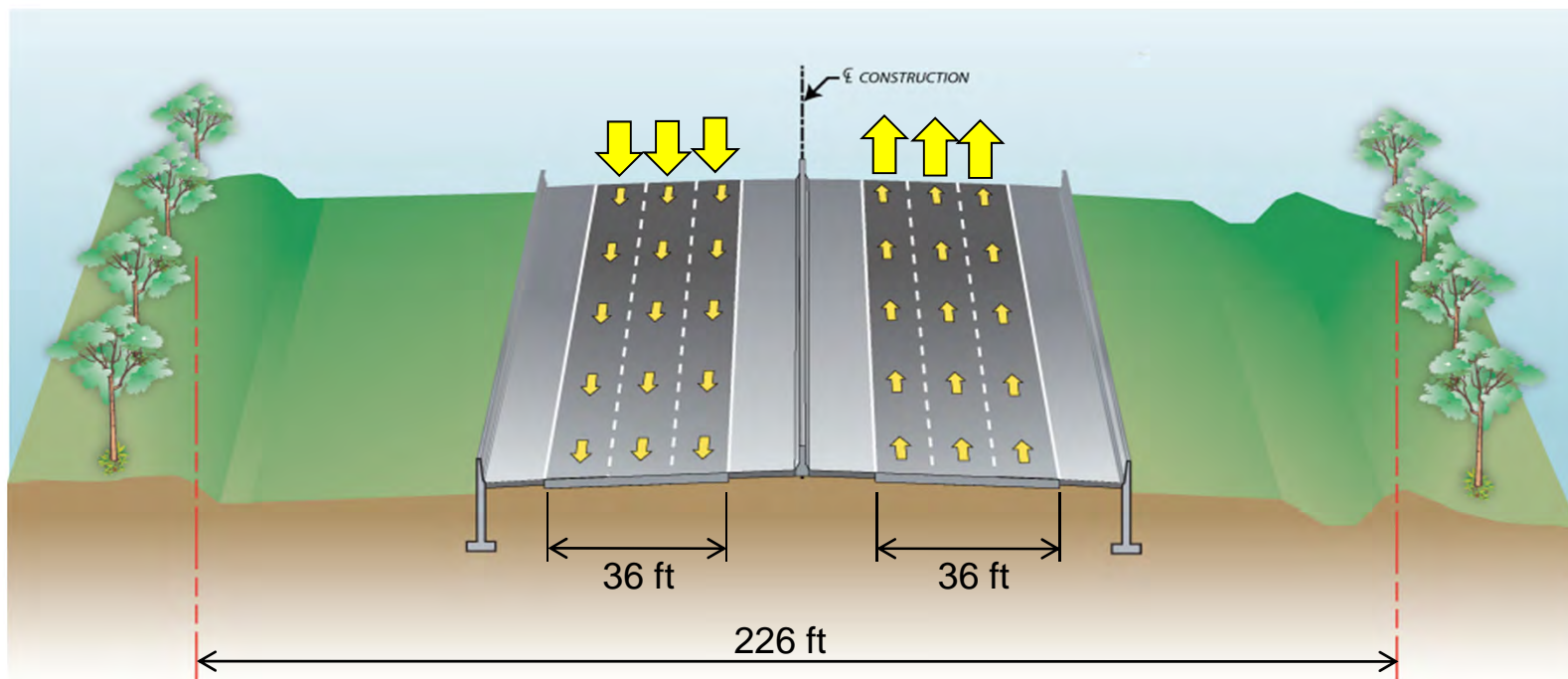


**4-Lane Expressway with Frontage Roads
(Expandable to 6-Lanes)**



Wekiva Parkway to I-4

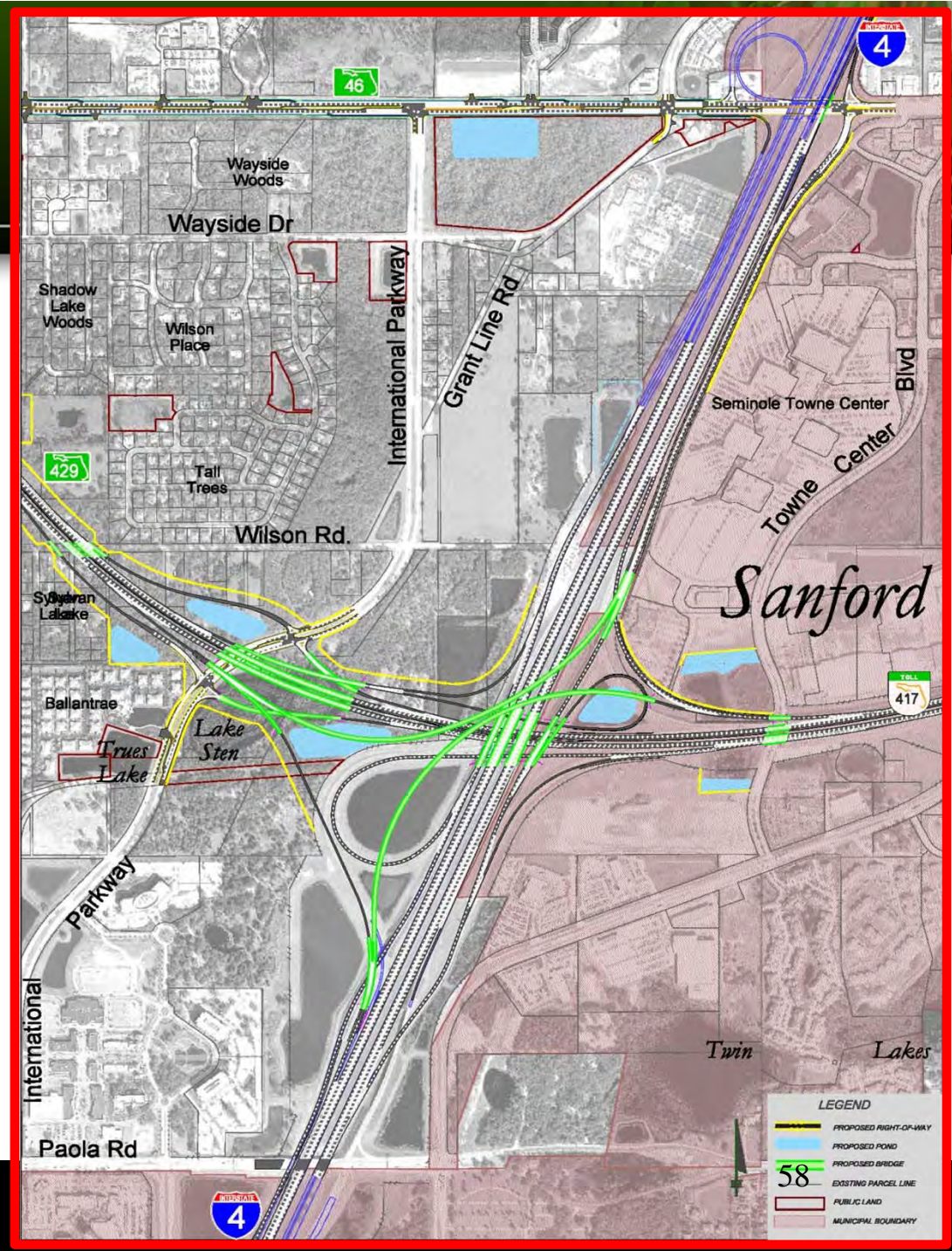
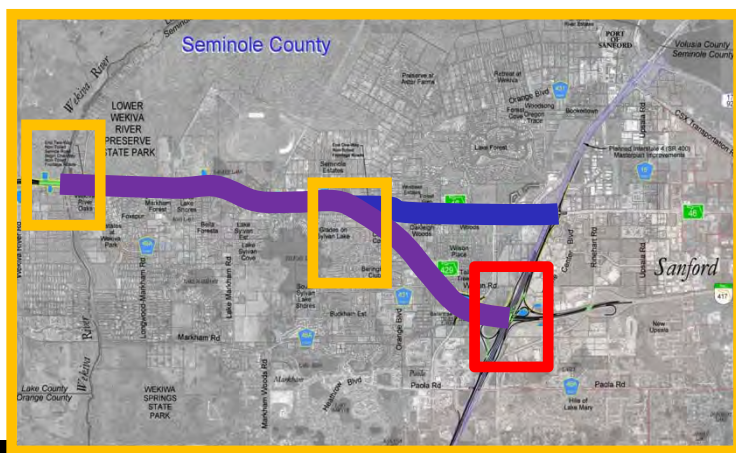
From S.R. 46 to S.R. 417



6-Lane Expressway

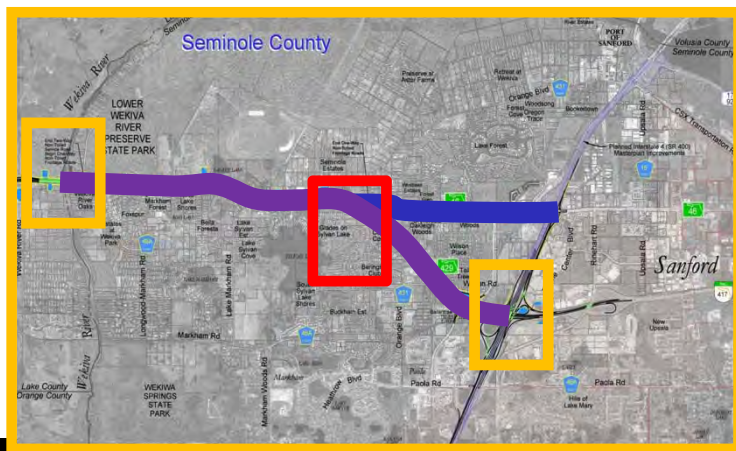
Seminole County Wekiva Parkway

Interchange with S.R. 417 and I-4

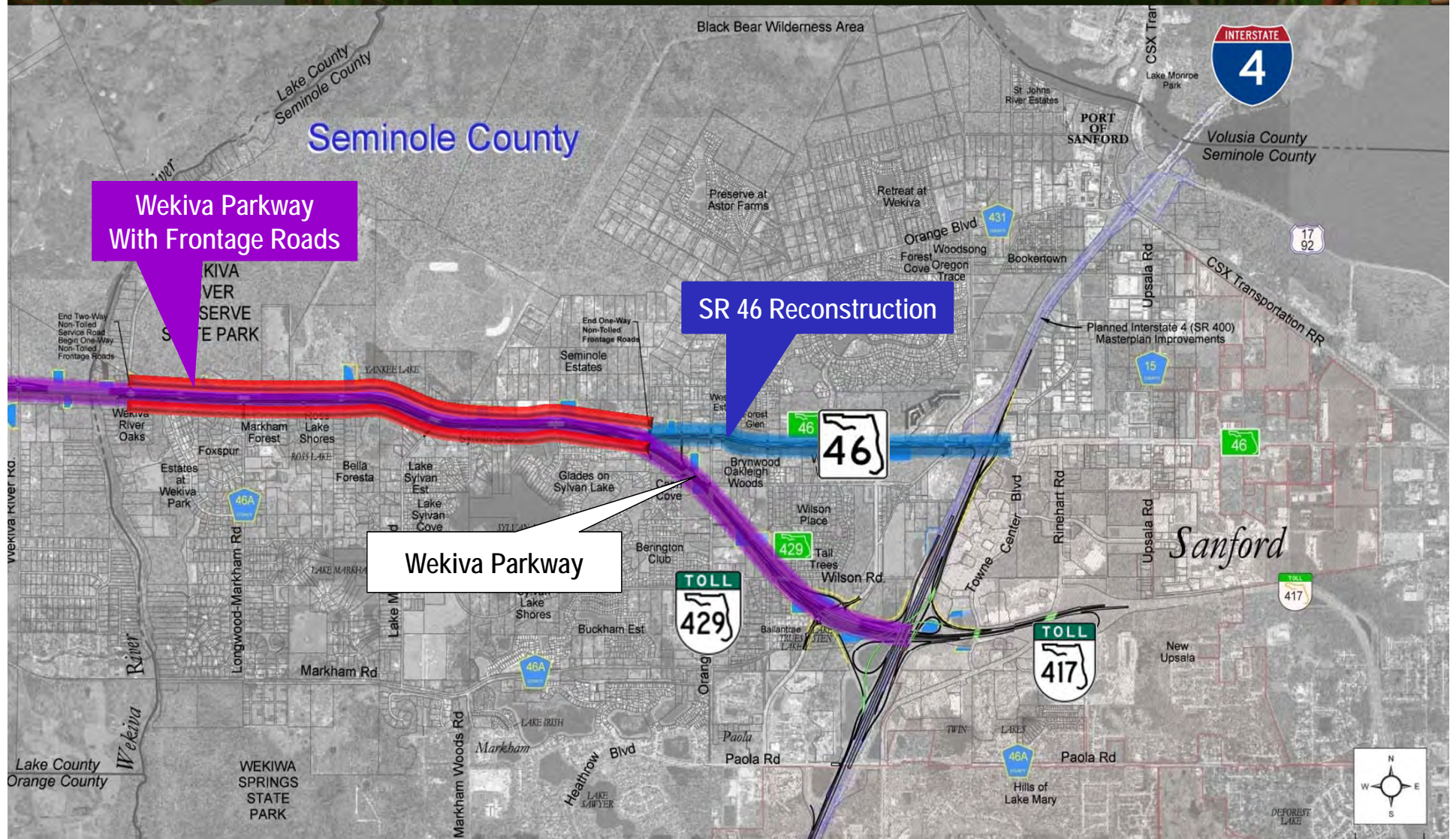


Seminole County Wekiva Parkway

Frontage Roads Transition with S.R. 46

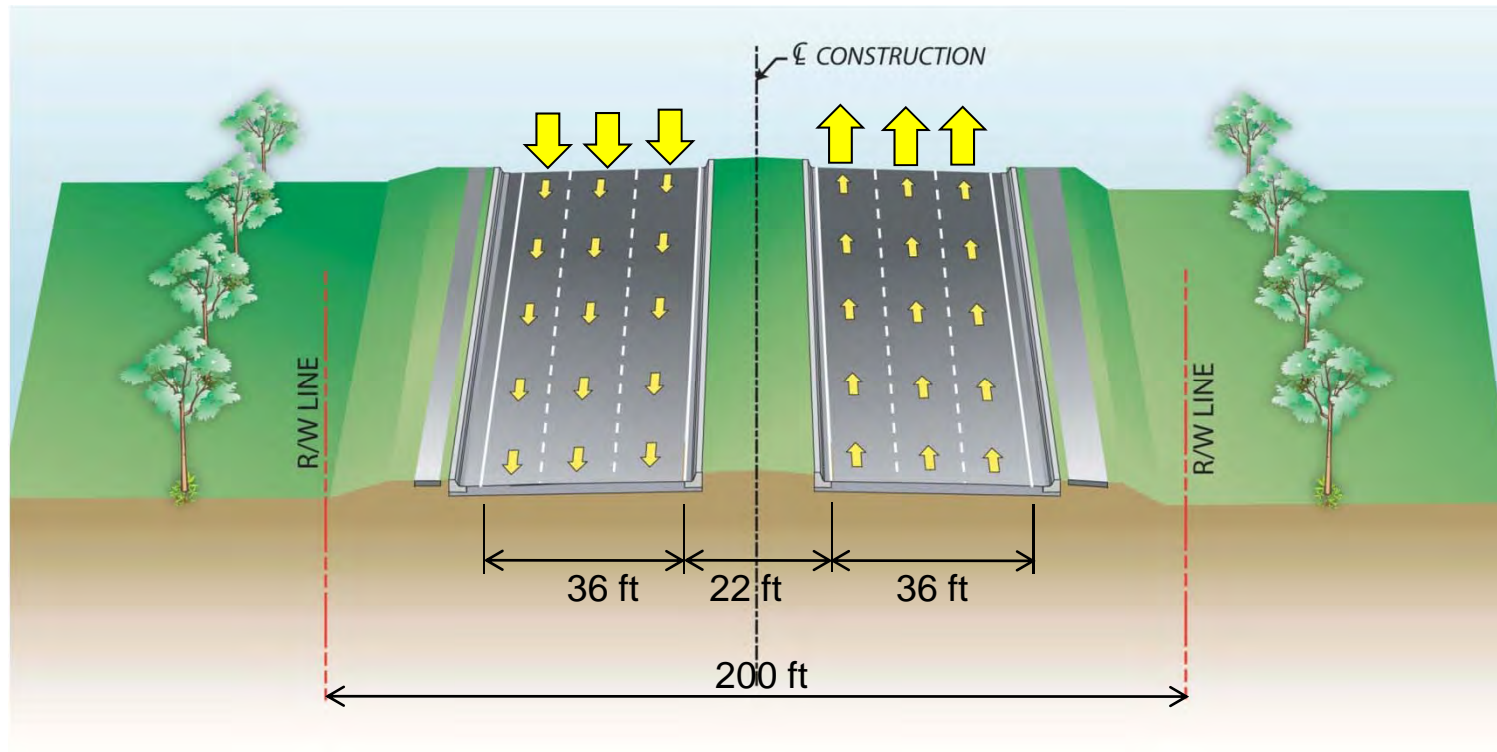


Seminole County



S.R. 46 Reconstruction

From West of Orange Boulevard to I-4



**6-Lane Roadway
Controlled Access**



Evaluation of Alternatives





No-Build Alternative

- **No-Build Alternative must be considered**
- **No-Build Alternative assumes:**
 - Wekiva Parkway and S.R. 46 Realignment project is not built
 - Only includes transportation projects in local and regional transportation plans with identified funding sources



No-Build Alternative

- **With the No-Build Alternative, there would be:**
 - No regional beltway system connection
 - Increased traffic congestion
 - S.R. 46 remains as a 2-lane roadway
 - Increase in vehicle crashes
 - Increase in vehicle-wildlife conflicts
 - Increase in carbon monoxide levels
 - Increase in emergency service response time



Evaluation Criteria

■ Social Environment

- Neighborhoods
- Community Cohesion
- Resident/Business Displacements
- Parcel Impacts
- Environmental Justice
- Access Management
- Foliage Nurseries

■ Physical Environment

- Contamination Sites
- Air Quality
- Noise

■ Cultural Environment

- Public Lands [Section 4\(f\)](#)
- Archaeological Resources
- Historic Resources [Section 106](#)

■ Natural Environment

- Wetlands
- Floodplains
- Threatened and Endangered Species [Section 7](#)
- Wild and Scenic Rivers
- Farmlands

Evaluation Matrix

Proposed Build Alternative - Estimated Impact Evaluation Summary Based on July 2010 Plans						
Evaluation Criteria		Orange County	Lake County West	Lake County East	Seminole County	Total
Social Environment	Parcel Impacts	133	55	126	122	436
	Total Right-of-Way (acres)	527	125	518	191	1361
	Residential Displacements	36	2	1	18	57
	Businesses/Other Displacements	4	0	2	3	9
	Number of Community Services in Study Area	-	-	-	-	35
	- Community Services Impacts (no. of parcels)	0	0	1	2	3
	- Community Services Impacts (acres)	0	0	4.2	4.8	9.0
	- Community Services Displacements	0	0	0	0	0
	Utility Impacts (no. of affected companies)	7	5	4	7	23
	Railroad Involvement	No	Yes	No	No	Yes
Cultural Environment	Section 4(f) Public Land Impacts (acres)	0	0	155.38	3.86	159.24
	Other Park & Recreation facilities	0	0	0	0	0
	Section 106 Historic Properties Impacted	2	0	0	0	2
	- Number of Direct Use Impacts	2	0	0	0	2
	- Number of resources with Adverse Affects	2	0	0	0	2
	Number of archaeological sites	0	0	0	0	0
	Archaeological site potential (low, medium, high)	Low	Low	Low	Low	Low
	Pedestrian/Bicycle Facilities Impacted	Enhanced	Enhanced	Enhanced	Enhanced	Enhanced
Physical Environment	Air Quality (Design Year 2032)	Enhanced	Enhanced	Enhanced	Enhanced	Enhanced
	Noise impacts within 66dBA Contour (Design Year 2032)					
	- Total number of noise sensitive sites impacted	53	64	10	123	250
	- Number of benefited receivers ¹	0	28	0	60	88
	Number Sites with High Potential for Contamination	4	0	0	1	5
Natural Environment	Wetland Impacts (acres)	6.48	10.65	33.51	46.92	97.56
	Floodplain Impacts (acre-ft)	6.29	11.26	38	5.24	60.79
	Potential for Impacts to T&E Species (low, medium, high)	Low	Low	Low	Low	Low
	Special Designations Involvement (Wild & Scenic River, Aquatic Preserve, Outstanding Florida Waters)	None	None	Yes	Yes	Yes
Construction and Right-of-Way Costs	Cost Estimate					
	Preliminary Engineering and Construction Cost Estimate (2010 \$ in Millions)	\$ 337.1	\$ 104.8	\$ 405.4	\$ 520.3	\$ 1,368
	Right-of-Way Cost Estimate (2010 \$ in Millions)	\$ 120.0	\$ 40.5	\$ 53.1	\$ 141.0	\$ 354.6
	Total Cost Estimate (2010 \$ in Millions)	\$ 457.1	\$ 145.3	\$ 458.5	\$ 661.3	\$ 1,722



Social Environmental Impacts

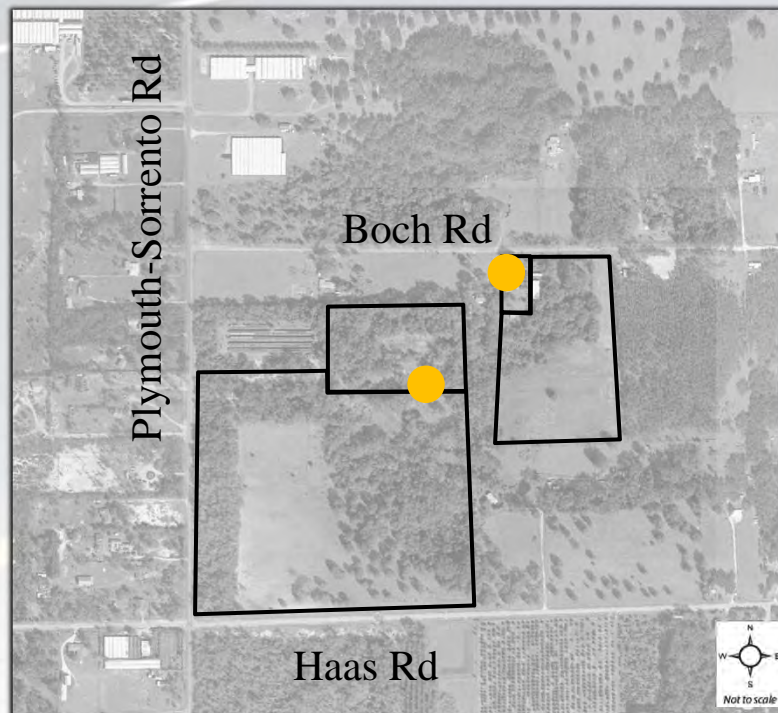
▪ Proposed Build Alternative will impact approximately:

- 436 parcels
- 1,300 acres
- 57 anticipated residential displacements
- 9 anticipated business displacements



Cultural Environmental Impacts

- **Proposed Build Alternative will impact:**
 - Two historic resources



Section 106

SECTION 106 DOCUMENTATION
AND DETERMINATION OF EFFECTS
CASE STUDY REPORT

WEKIVA PARKWAY (SR 429)/SR 46 REALIGNMENT
PROJECT DEVELOPMENT AND ENVIRONMENT (PD&E) STUDY
IN ORANGE, LAKE, AND SEMINOLE COUNTIES, FLORIDA

Prepared for:
Orlando-Orange County Expressway Authority
and
Florida Department of Transportation, District Five

REVISED DRAFT
June 2010

Section 4(f)

FEDERAL HIGHWAY ADMINISTRATION
FLORIDA DIVISION

DRAFT

ADMINISTRATIVE ACTION INDIVIDUAL SECTION 4(f) EVALUATION

U.S. Department of Transportation,
Federal Highway Administration
and
Florida Department of Transportation, District Five
in cooperation with the
Orlando-Orange County Expressway Authority

Financial Project Number: 238275 1 22 01 and 240200 1 22 01
Federal Project Number: TBD

WEKIVA PARKWAY (SR 429)/SR 46 REALIGNMENT
Orange, Lake, and Seminole Counties, Florida

Wekiva Parkway (SR 429)
From US 441 (SR 380) Lake Land Parkway (SR 429) SR 441 (44) Interchange, Orange County
to SR 417 SR 44 (SR 406) Interchange, Seminole County

SR 46 Realignment
From US 441 (SR 380) SR 46 Interchange, Lake County
to Wekiva Parkway (SR 429), Orange County

Wekiva Parkway: Construction of a new four-lane, expeditious to six-lane, limited access expressway to replace the Wekiva Parkway (SR 429) around the metropolitan Orlando area. The approximate length is 6.9 miles. Realignment of SR 46 in Lake County is included as part of the Wekiva Parkway project. The approximate length of the SR 46 Realignment is 2.7 miles. The realignment is proposed as a two-lane, undivided to four-lane, dual facility.

SR 46 Realignment: Reconstruction of the existing SR 46 facility in Lake County to provide six-lane road corridor access from US 441 to east of Round Lake Road. The realignment of SR 46 from east of Round Lake Road to a system interchange with Wekiva Parkway near the Orange/Lake County line is proposed as a limited access expressway. The approximate length of the SR 46 Realignment is 4.8 miles.

Submitted pursuant to 49 U.S.C. 303.

Approved for public availability

Date

Division Administrator
Federal Highway Administration



Cultural Environmental Impacts



■ Proposed Build Alternative impacts to Section 4(f) Resources:

- Publicly owned conservation lands
 - Approximately 160 acres impacted
 - Concurrence from Florida Department of Environmental Protection and Division of Forestry
- Wekiva River:
 - Federally-designated Wild & Scenic River
 - Coordination with National Park Service ongoing



Physical Environment Impacts

- **Proposed Build Alternative will:**
 - Impact 5 potential contamination sites
 - Meet air quality standards



Physical Environment Impacts

▪ **Proposed Build Alternative will impact approximately:**

- 250 noise sensitive sites in Orange, Lake and Seminole Counties
- Noise barrier walls are cost feasible in 3 locations
- Further noise analysis during final design phase

Natural Environment Impacts



Wetland impacts - 98 Acres



Floodplain impacts – 61 Acre-feet



Threatened & Endangered
Species - Minimal Effects



Preliminary Cost Estimate



Preliminary Cost Estimate (2010 Dollars)

Total Engineering & Construction Cost

\$1.4 Billion

Total Right-of-Way Cost

\$355 Million

Total Project Cost

Estimated
\$1.7 to \$1.8 Billion



Proposed Build Alternative Consistency



- **Wekiva Parkway and Protection Act**
- **Local Comprehensive Plans**





Next Steps



Next Steps

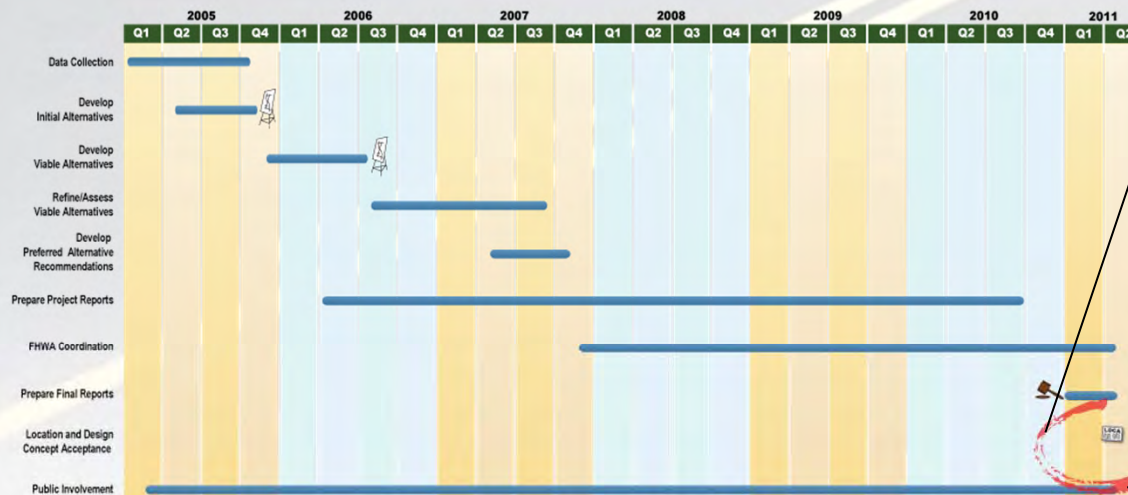


- **10-day comment period expires November 8, 2010**
- **Review public comments**
- **Make needed revisions**
- **Coordinate with local authorities**
- **Coordinate with Federal Highway Administration**
- **Complete project documents**



Next Steps

- Receive Federal Highway Administration approval
- Publish “Acceptance” in local newspapers
- Conclude PD&E Study



This PD&E Study schedule is intended to provide you with information of upcoming activities and events. These dates are subject to change.

PD&E Completed
Spring 2011



Funding

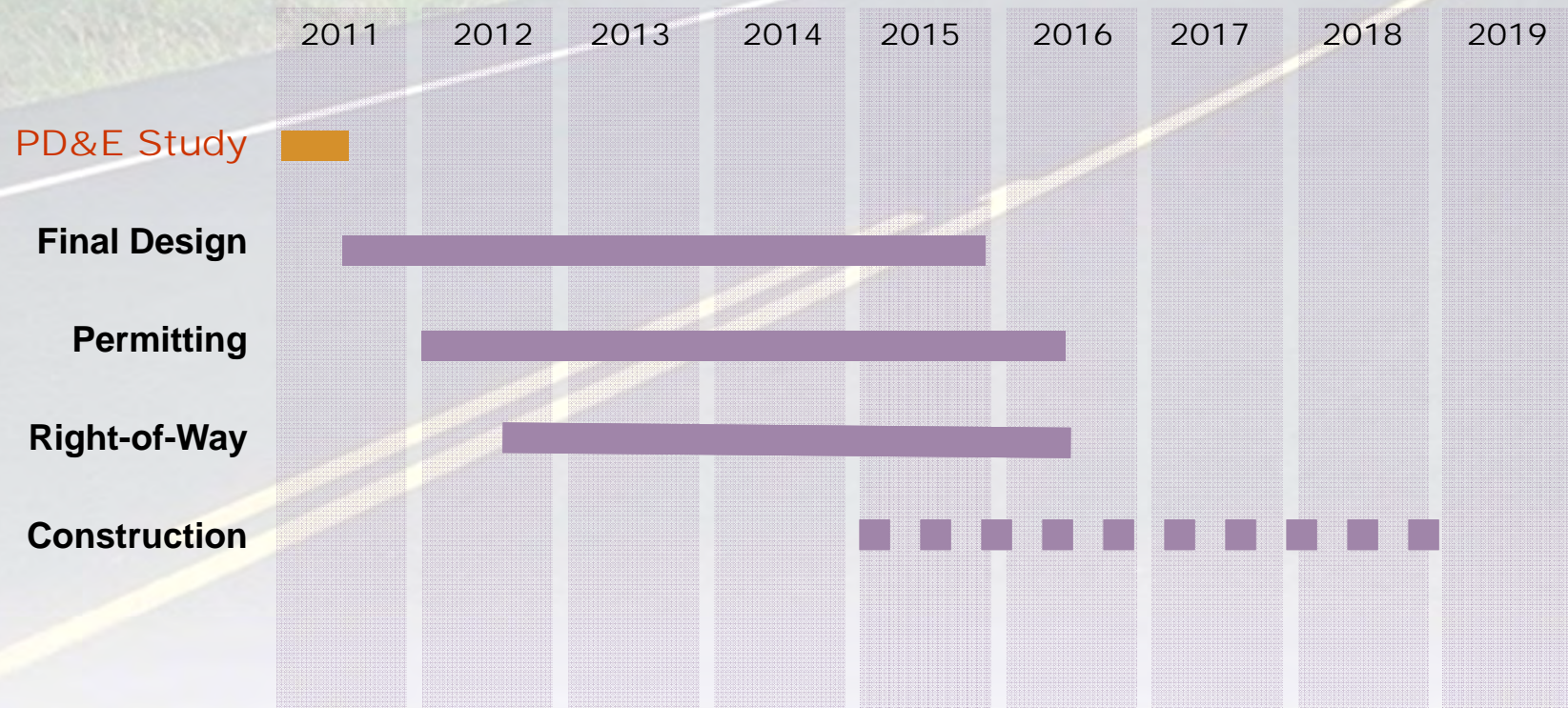


■ Potential funding resources:

- Federal, state and local funds (if available)
- Expressway Authority (for tolled segments)



Potential Project Schedule





Project Contact

Mr. Brian Hutchings, Public Information Officer
OOCEA



Phone: (407) 383-5817



E-mail: construction@oocea.com

**Written comments and questions can
be mailed to:**



Attention: Mr. Brian Hutchings

OOCEA

4974 ORL Tower Road

Orlando, FL 32807



10-Minute Break

PUBLIC HEARING

Session 1 - October 26, 2010 in Apopka

Session 2 - October 27, 2010 in Mount Dora

Session 3 - October 28, 2010 in Sanford



Public Comment Period

PUBLIC HEARING

Session 1 - October 26, 2010 in Apopka

Session 2 - October 27, 2010 in Mount Dora

Session 3 - October 28, 2010 in Sanford





Conclusion

The Public Hearing on the proposed Wekiva Parkway will not be officially closed until the conclusion of the third session.

- **Session 1 - October 26, 2010 in Apopka**
- **Session 2 - October 27, 2010 in Mount Dora**
- **Session 3 - October 28, 2010 in Sanford**

