



CENTRAL FLORIDA EXPRESSWAY AUTHORITY

FY 2015 General Traffic and Earning's Consultant Annual Report

Hugh W. Miller, Jr., PhD, PE
CDM Smith



FY 2015 General Traffic and Earning's Consultant Annual Report

- Annual activity
 - Required by bond covenants
 - Performed by an “Independent Consultant”
- Results used in
 - Financial disclosure to investors
 - Financial planning and bond sales
 - Work Program and Master Plan

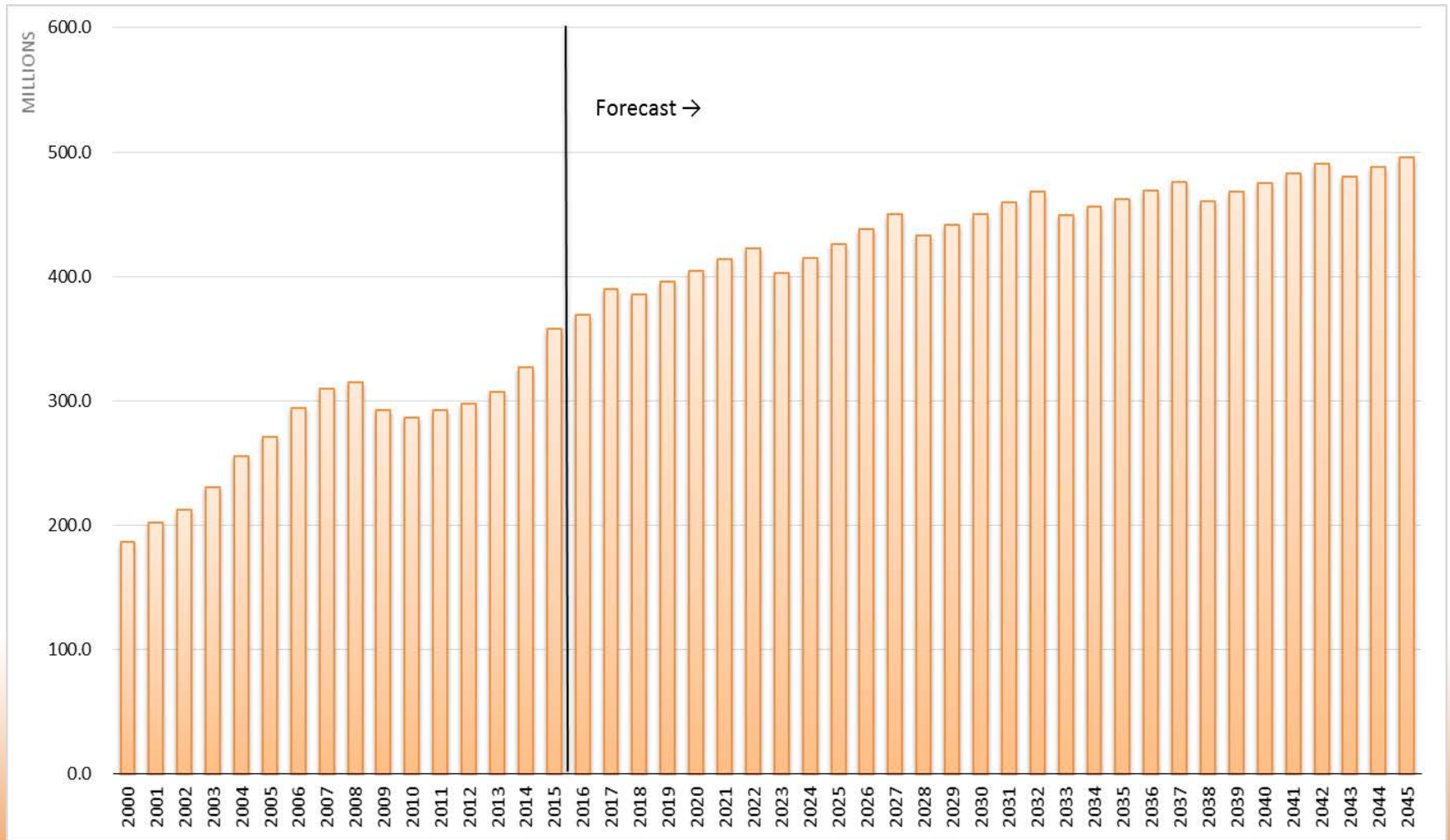


Key Assumptions

- Pattern of socio-economic growth according to Metropolitan Planning Organizations (MPOs), controlled to County Level forecasts in the Bureau of Economic and Business Research (BEBR) Medium population forecasts
- Transportation networks based on cost-feasible plans from the MPOs, including CFX Work Program and Master Plan
- Adopted toll rate policies by agency (current toll rate, future toll rate adjustments and discount programs)

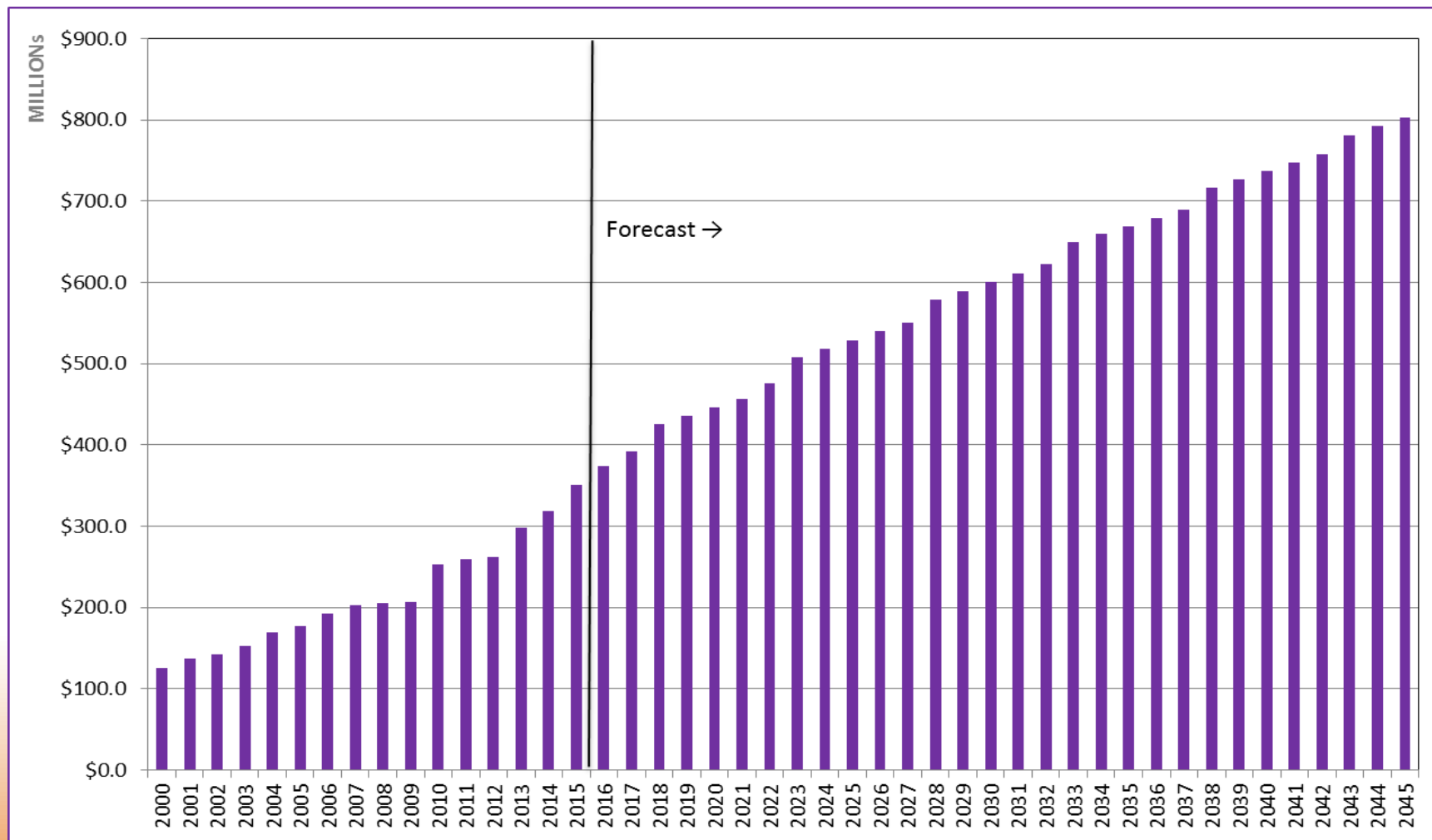


Annual Transactions





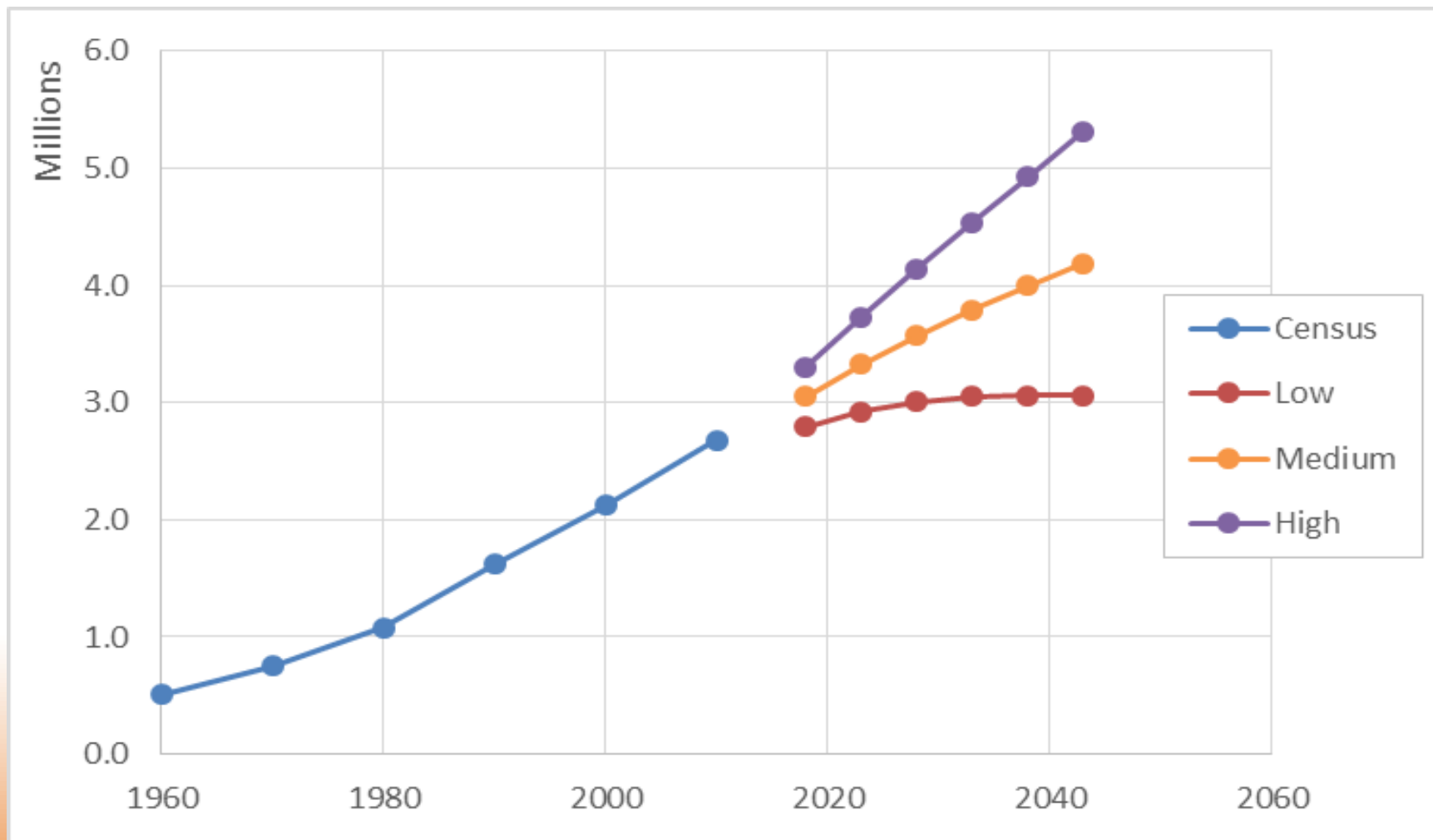
Annual Toll Revenue



After adjustments for Revenue Recaptured from UTN and Discount Programs

CENTRAL FLORIDA EXPRESSWAY AUTHORITY

BEBR Population Forecasts

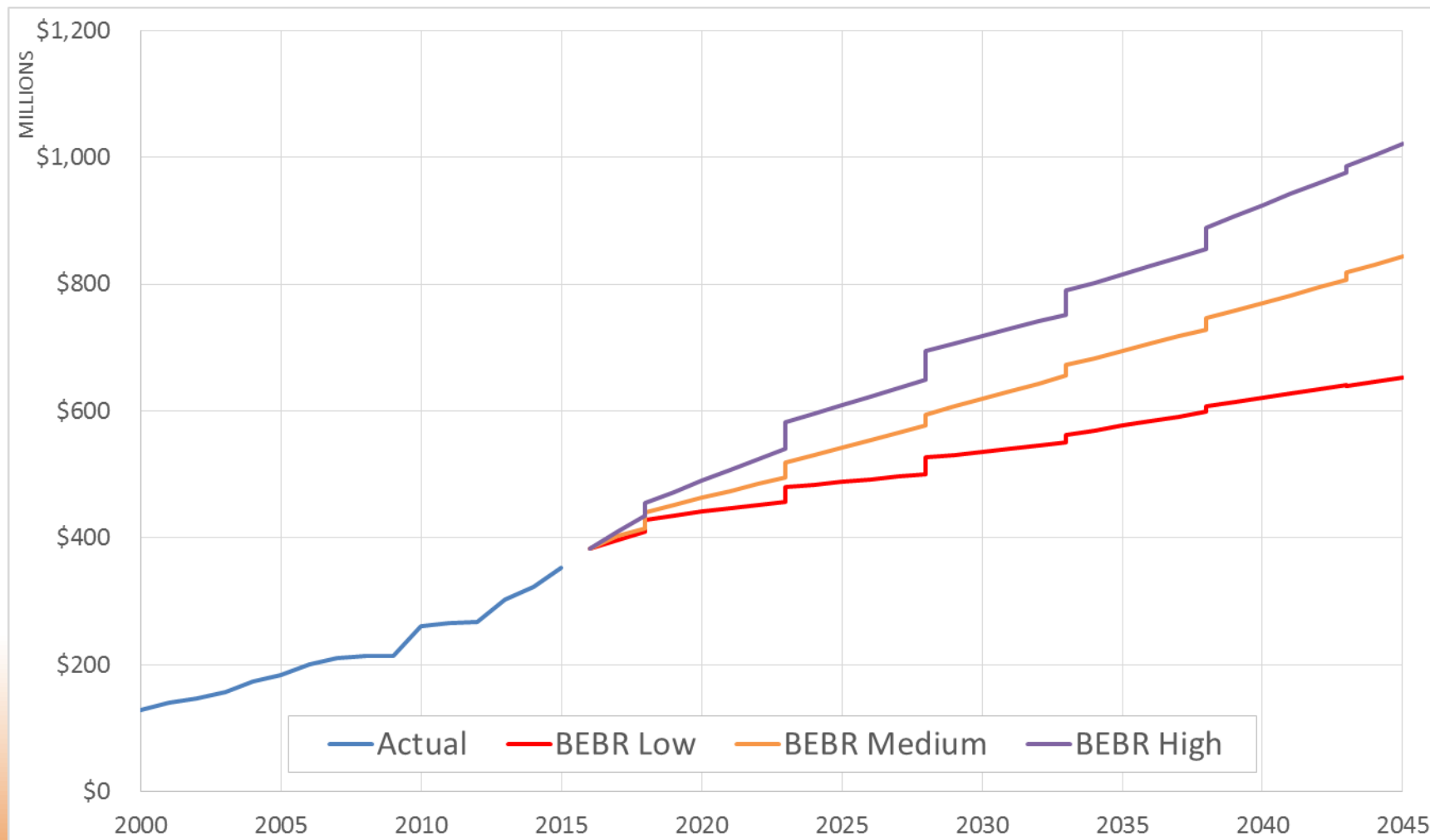


BEBR - Bureau of Economic and Business Research, University of Florida

CENTRAL FLORIDA EXPRESSWAY AUTHORITY

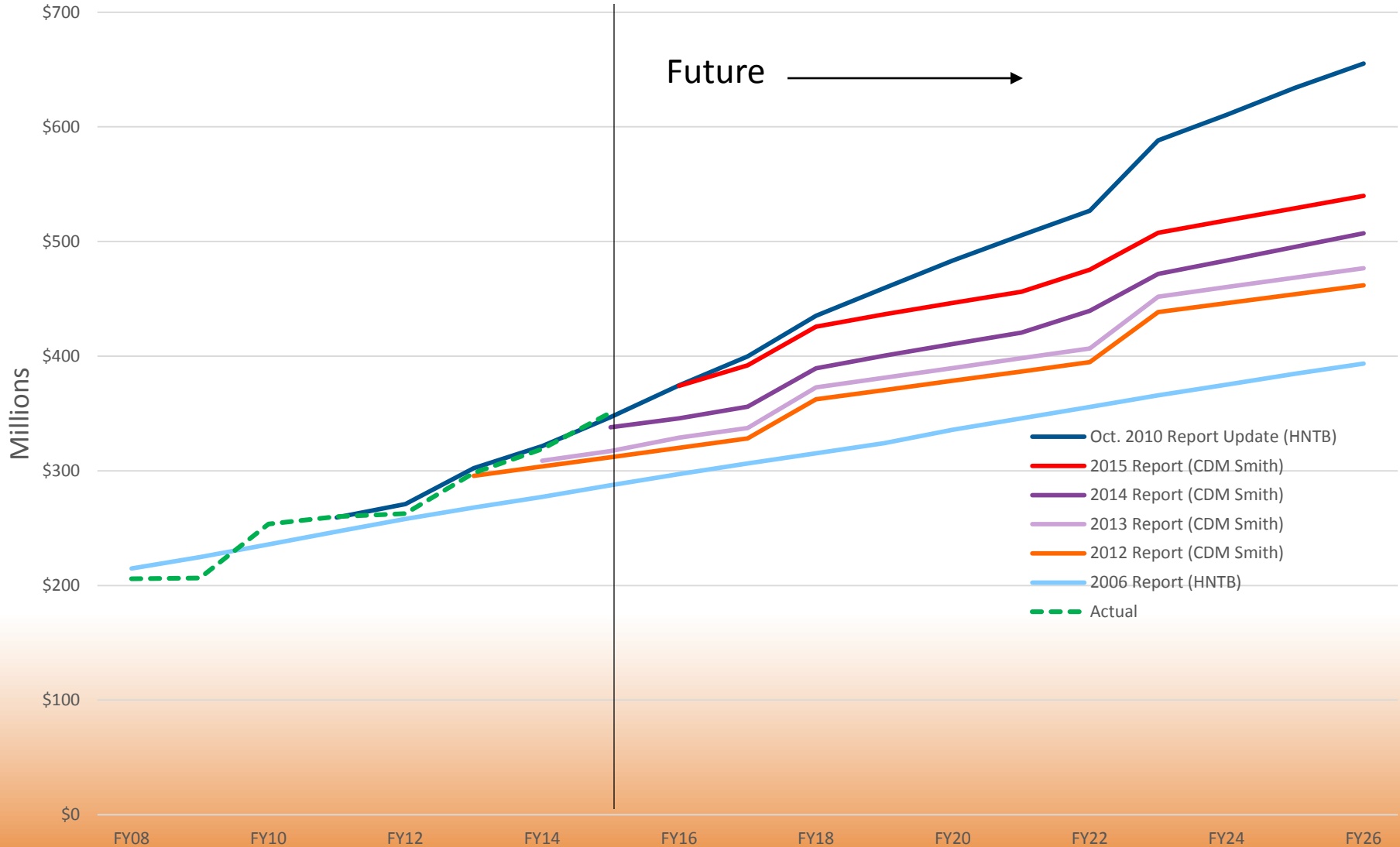


Impact of Population on Revenue Estimates





Official Revenue Forecast Comparison





Questions