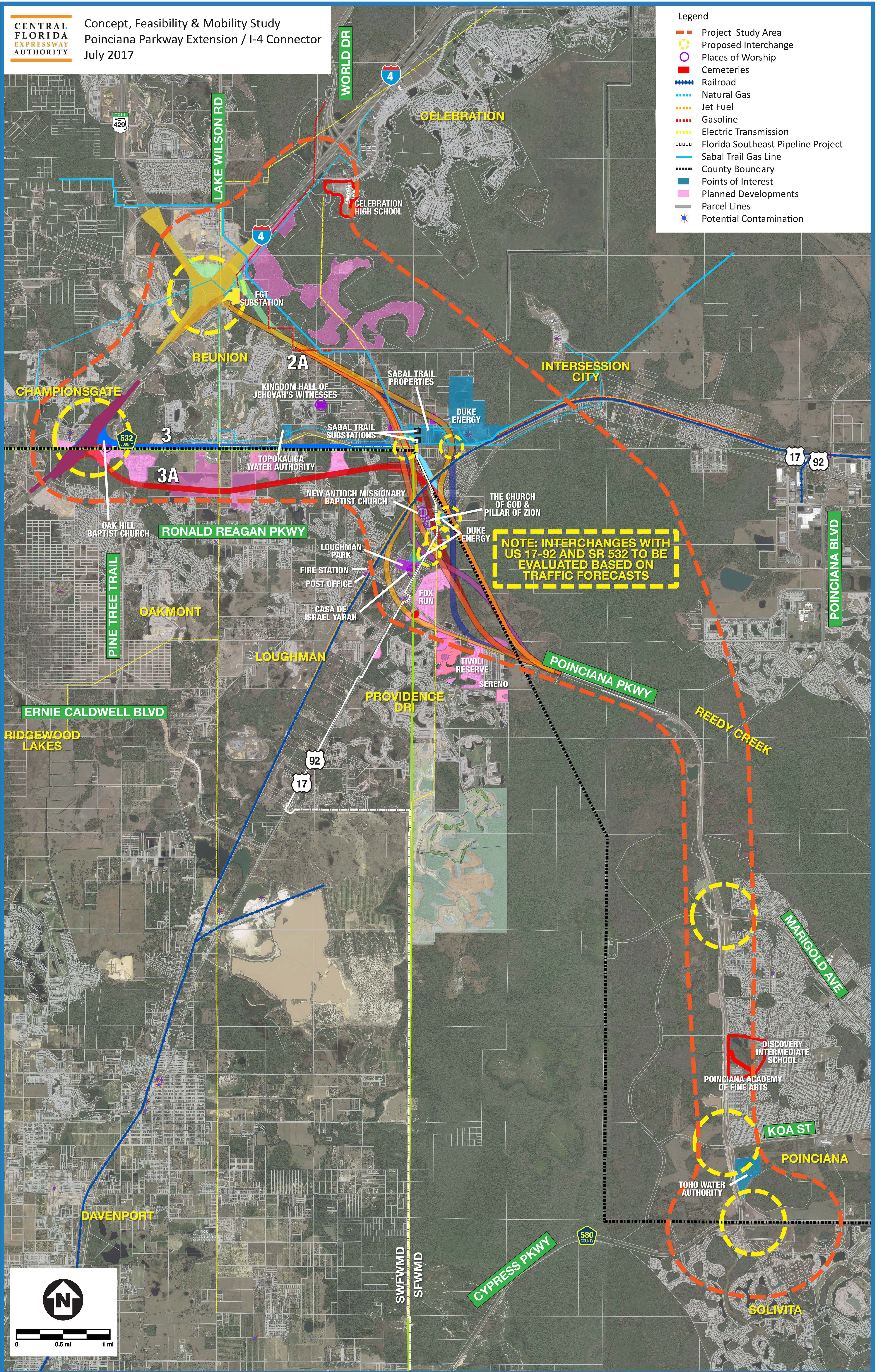


Legend

- Project Study Area
- Proposed Interchange
- Places of Worship
- Cemeteries
- Railroad
- Natural Gas
- Jet Fuel
- Gasoline
- Electric Transmission
- Florida Southeast Pipeline Project
- Sabal Trail Gas Line
- County Boundary
- Points of Interest
- Planned Developments
- Parcel Lines
- ★ Potential Contamination



NOTE: INTERCHANGES WITH US 17-92 AND SR 532 TO BE EVALUATED BASED ON TRAFFIC FORECASTS

