



SR 408 PD&E STUDY

EASTERN EXTENSION FROM SR 50 TO THE SR 50/SR 520 INTERSECTION

Project Identification Number: 408-254

<https://www.cfxway.com/408study>

Newsletter 4 - June 2017

PD&E STUDY OVERVIEW

In May 2015, the **Central Florida Expressway Authority (CFX)** began a Project Development and Environment (PD&E) Study for the proposed SR 408 (Spessard L. Holland East-West Expressway) Eastern Extension from the SR 50 interchange to the SR 50/SR 520 Intersection in East Orange County.

The objective of this study is to help CFX reach a decision on the type, design and location of the potential eastern extension of SR 408. All factors related to the concept design and location of the proposed expressway must be considered. These include transportation needs, social impacts, economic factors, environmental impacts, engineering analysis and right-of-way requirements.

ALTERNATIVES PUBLIC WORKSHOP

The Alternatives Public Workshop is being held as part of the study effort for the potential eastern extension of SR 408 from the State Road 50 interchange to the SR 50/State Road 520 intersection in east Orange County. The purpose of this Public Workshop is to provide the public with an opportunity to review and comment on the preferred corridor and the alternatives developed within that corridor for further study. Representatives from the PD&E Study team are available to answer your questions concerning the presentation, display boards and the alternatives evaluation process and results.

The meeting will be held in an open house format from **5:00 p.m. to 7:00 p.m.** Participants will be able to review project information and discuss the project with project staff during the meeting.

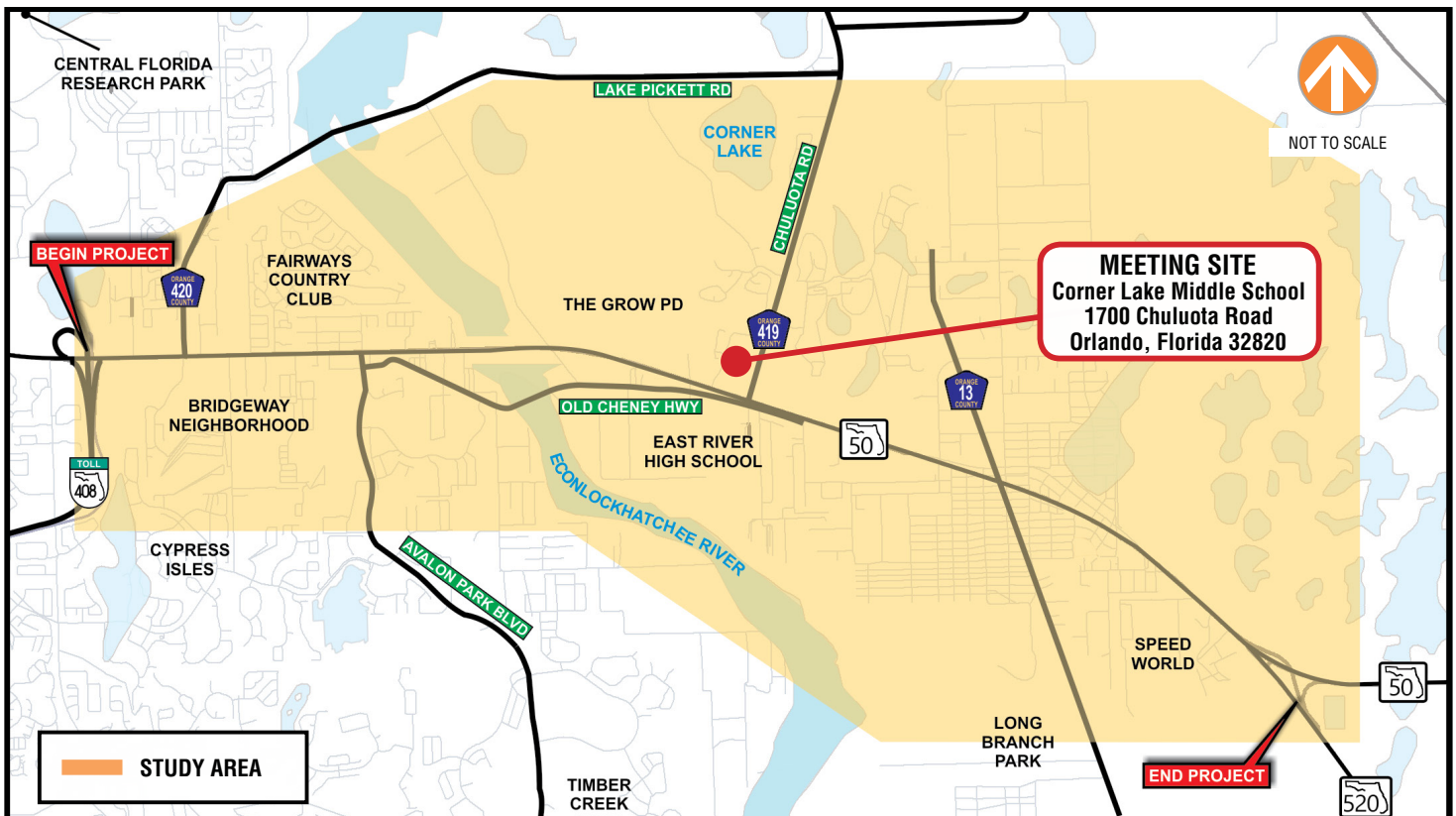
PROJECT UPDATE

CFX initiated a new PD&E Study in November 2016 in order to study potential solutions for development of a new transportation corridor in eastern Orange County. Five main corridors and 7 additional combinations were evaluated and are shown below. The corridors were evaluated in terms of compliance with Purpose and Need, environmental impacts, socio-economic impacts, engineering considerations and public comments. These corridors were presented at the February Public Corridor Meeting. All comments received were summarized, analyzed and included in the evaluation of the corridors. The results of the evaluation indicate that Corridor 4 is the most balanced corridor in terms of meeting the needs of the project and minimizing impacts.

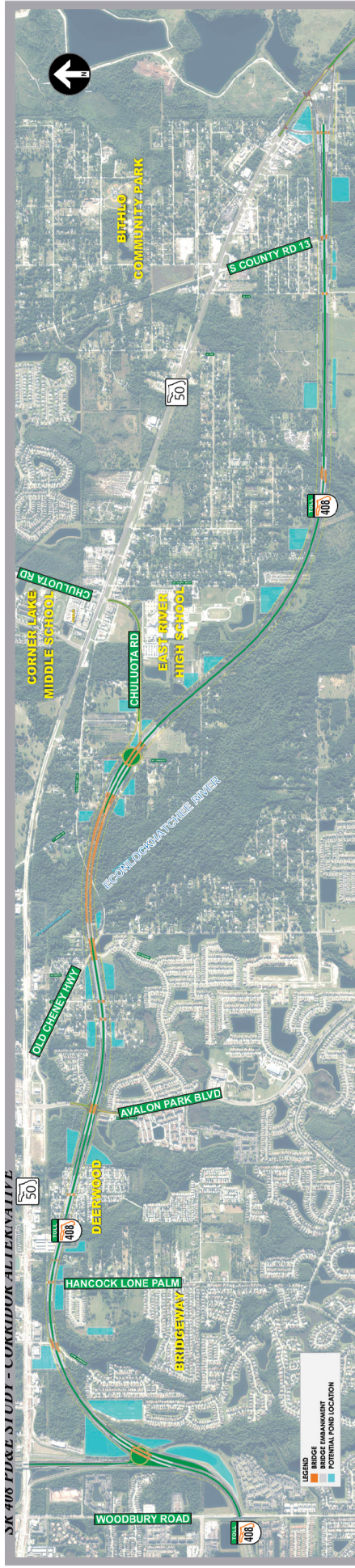
PUBLIC INVOLVEMENT

One of the most important aspects of a PD&E Study is public involvement. Your input is important to the success of the project. Information received as a result of this public meeting, along with detailed analyses of the alternatives, will form the basis for the selection of the recommended alternative and will be documented in the PD&E Study.

Opportunities for you to provide your input will be available throughout the study public meetings, and the project website: <https://www.cfxway.com/408study>.



PROJECT ALTERNATIVE



The results of the study evaluation to date indicate that Corridor 4 is the most balanced corridor in terms of meeting the needs of the project and minimizing impacts. An alignment was developed within Corridor 4 based on the public comments received at the Public Corridor Meeting held in February. The objective is to either avoid or minimize impacts and this alignment is also based on minimizing those impacts to residences and environmental lands. The alternative alignment currently under evaluation is shown in the map above and is also on display at this meeting. Further study and public comments will continue to refine this alignment. We invite you to view the displays and provide your comments on the comment forms provided.

PROJECT SCHEDULE

MONTH	2016							2017									
	S	O	N	D	J	F	M	A	M	J	J	A	S	O	N	D	
BEGIN STUDY																	
CORRIDOR PUBLIC MEETING						★											
ALTERNATIVES PUBLIC WORKSHOP										★							
PUBLIC HEARING																	★
CORRIDOR EVALUATION																	
ALTERNATIVES ANALYSIS																	
ENVIRONMENTAL ANALYSIS																	
PUBLIC INVOLVEMENT																	
STUDY COMPLETION																	🎯

PROJECT CONTACT

For project information, to provide comments regarding the study or to request a meeting with your group, please contact:

Valerie Tutor

Public Information Officer

Phone: 941-504-9440

Email: 408study@CFXway.com

★ PUBLIC MEETINGS ● DURATION OF TASK Schedule is subject to change

Public participation is solicited without regard to race, color, national origin, age, sex, religion, disability or family status. Persons who require special accommodations under the Americans with Disabilities Act or persons who require translation services, free of charge, should contact Valerie Tutor, Public Information Officer, via email: 408study@CFXway.com or phone: (941) 504-9440. Para más información en español acerca del proyecto, por favor comuníquese con Alicia Gonzalez al 786-280-6645 o por correo electrónico agonzalez@mrgmiami.com.