

PROJECT DESCRIPTION

The study corridor of the proposed Poinciana Parkway Extension / I-4 Connector generally begins at the southern terminus of the existing Poinciana Parkway at Cypress Parkway, extends along the existing Poinciana Parkway alignment to the Osceola / Polk County line and then extends in a general north / northwest direction to connect with Interstate-4 (I-4). The study corridor encompasses portions of both Osceola and Polk Counties and includes a proposed interchange with I-4.

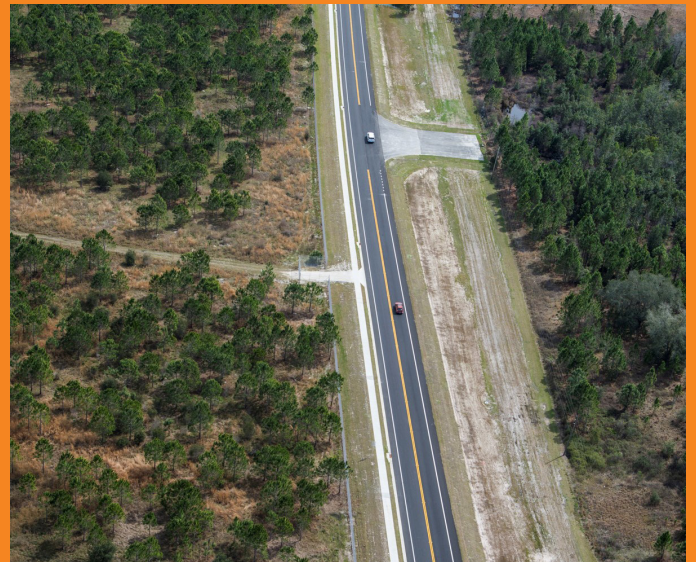


STUDY OBJECTIVE

The objective of this Concept, Feasibility and Mobility Study is to develop and evaluate alternative mobility programs within the project corridor. The work includes the evaluation and documentation of the physical, natural, social, and cultural environment within the corridor and the potential impacts associated with the various mobility alternatives. This analysis also addresses economic and engineering feasibility, mobility, capacity and levels of service, conceptual geometry and structures, and potential interchanges and intersection improvements. Public involvement and interagency coordination are integral parts of the assessment process.

GOALS OF THE PROJECT

In order to meet the demands of projected population growth, increased cargo movement, sustained growth of tourism activity, anticipated job growth, and planned development, a limited-access, high-speed facility is needed. The goals of this proposed new limited-access facility include improving the roadway connection from the greater Poinciana area to I-4, enhancing mobility of the area's growing population and economy, relieving congestion on local roads, providing for the incorporation of transit options, and promoting regional connectivity.

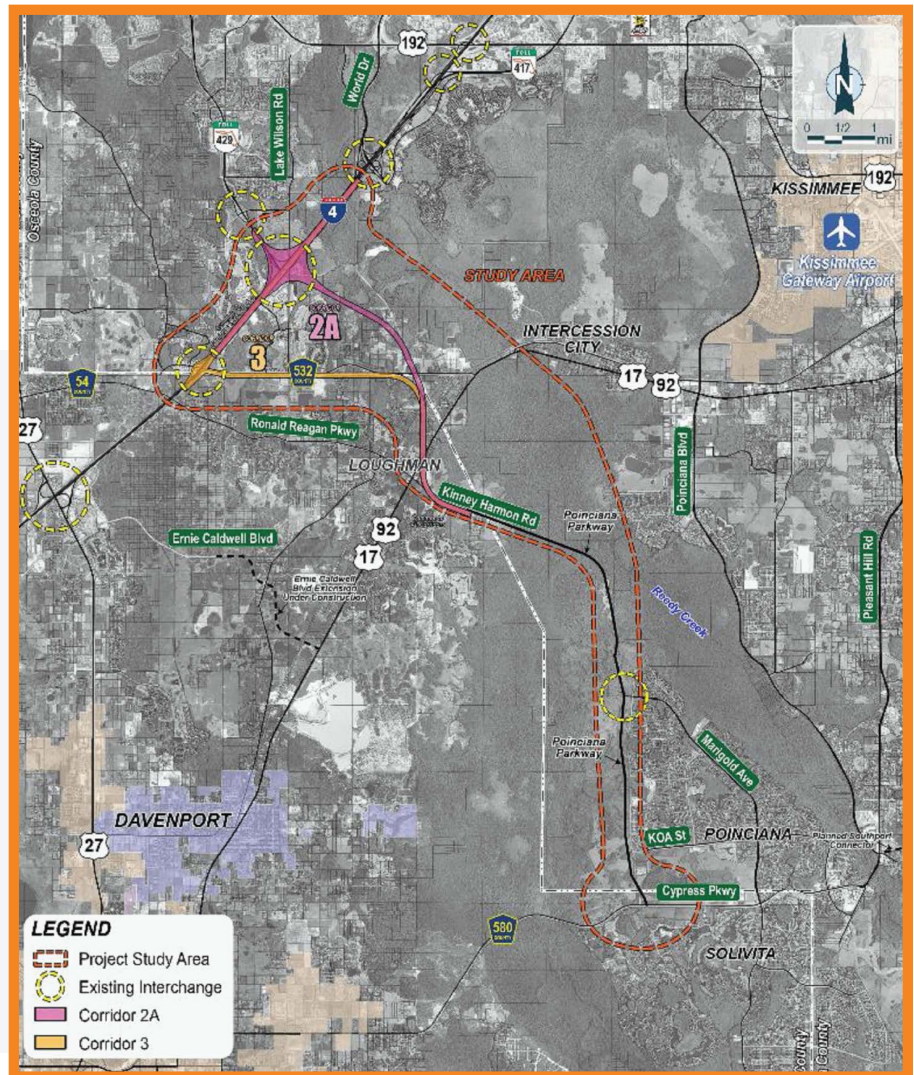


STUDY CONSIDERATIONS

During a previous FDOT study, two corridors were recommended for further study. These two corridors will be evaluated further, with refinements and shifts analyzed in an effort to improve the viability of the alignments. Additionally, refinements will also be needed to address proposed connections to Poinciana Parkway and I-4. The analysis will consist of incorporating and building upon the previous work achieved from the preceding study, while conducting a “fresh-look” and researching recent information that could influence the current decision-making. Transportation demands will be determined and a range of mobility options and programs will be evaluated. If one or more of the corridors are found to be feasible as a result of this concept study, they will then proceed to a Project Development and Environment (PD&E) Study to create and evaluate alternative alignments.

PUBLIC INVOLVEMENT

This study envisions a robust public involvement program. An Environmental Advisory Group (EAG), a Project Advisory Group (PAG), and public workshops and informational meetings will be held starting July 2017 and continuing through March 2018. In addition, meetings with various stakeholders including neighborhoods, special interest groups, one-on-one meetings with directly affected property owners, as well as direct mailings and newsletters to persons that may have an interest in this project are all aspects of the overall public involvement activities.



TO FIND OUT MORE ABOUT THE STUDIES, CONTACT:

CENTRAL FLORIDA EXPRESSWAY AUTHORITY

Mary Brooks, Public Involvement Coordinator
 Phone: (407) 802-3210
 Email: ConceptStudies@CFXway.com

4974 ORL Tower Road
 Orlando, FL 32807
 Phone: (407) 690-5000
 Fax: (407) 690-5011
 Email: Info@CFXway.com

You may also visit the studies' webpage at:

www.cfxway.com/agency-information/plans-studies/project-studies/concept-studies/

@CFXConceptStudies

Public participation is solicited without regard to race, color, national origin, age, sex, religion, disability or family status. Para más información en español acerca del proyecto, por favor comuníquese con Alicia Gonzalez al 786-280-6645 o por correo electrónico agonzalez@mrgmiami.com.