



# **Concept, Feasibility & Mobility Studies**

---

## **Northeast Connector Expressway**

Project Advisory Group  
Meeting No. 1

July 20, 2017

## Concept, Feasibility & Mobility Studies

This meeting, project, or study is being conducted without regard to race, color, national origin, age, sex, religion, disability or family status. Persons wishing to express their concerns relative to compliance by the Central Florida Expressway Authority (CFX) with Title VI may do so by contacting:

Joseph Passiatore  
CFX General Counsel  
4974 ORL Tower Road  
Orlando, FL 32807  
407-690-5000

[Joe.Passiatore@CFXWay.com](mailto:Joe.Passiatore@CFXWay.com)

All inquiries or complaints will be handled according to CFX procedure and in a prompt and courteous manner.

# Concept, Feasibility & Mobility Studies

## AGENDA

- I. Introductions
- II. Study History
- III. Study Corridor Overview
- IV. Project Goals
- V. Study Methodology & Schedule
- VI. PAG Roles
- VII. Study Corridor Details
- VIII. Open Discussion
- IX. Next Steps
- X. Action Items

# Concept, Feasibility & Mobility Studies

## Study History

**December 19, 2005:** Osceola County Comprehensive Plan adopted, proposed several new corridors to meet the county's anticipated growth.

**2012:** Osceola County Expressway Authority (OCX) began creating its first long-range expressway plan.

**August 13, 2013:** OCX Master Plan 2040 finalized, defining the county's expressway needs and providing for a program of projects to implement the plan.

**September 8, 2016:** CFX Board approved an interlocal agreement with Osceola County and OCX to transfer the lead for developing the remainder of the OCX 2040 Master Plan to CFX. CFX incorporated the OCX master plan segments into the CFX master plan.

**March 9, 2017:** CFX Board approved consultant contracts to conduct the Concept, Feasibility and Mobility studies.

**April 2017:** CFX commenced four concept, feasibility, and mobility studies to determine if any of the corridors are viable and fundable in accordance with CFX policies and procedures.

## Concept, Feasibility & Mobility Studies

Each of the four corridor segments has been previously studied to varying degrees of detail. Our consultant teams will summarize the previous studies of each corridor segment in individual presentations.

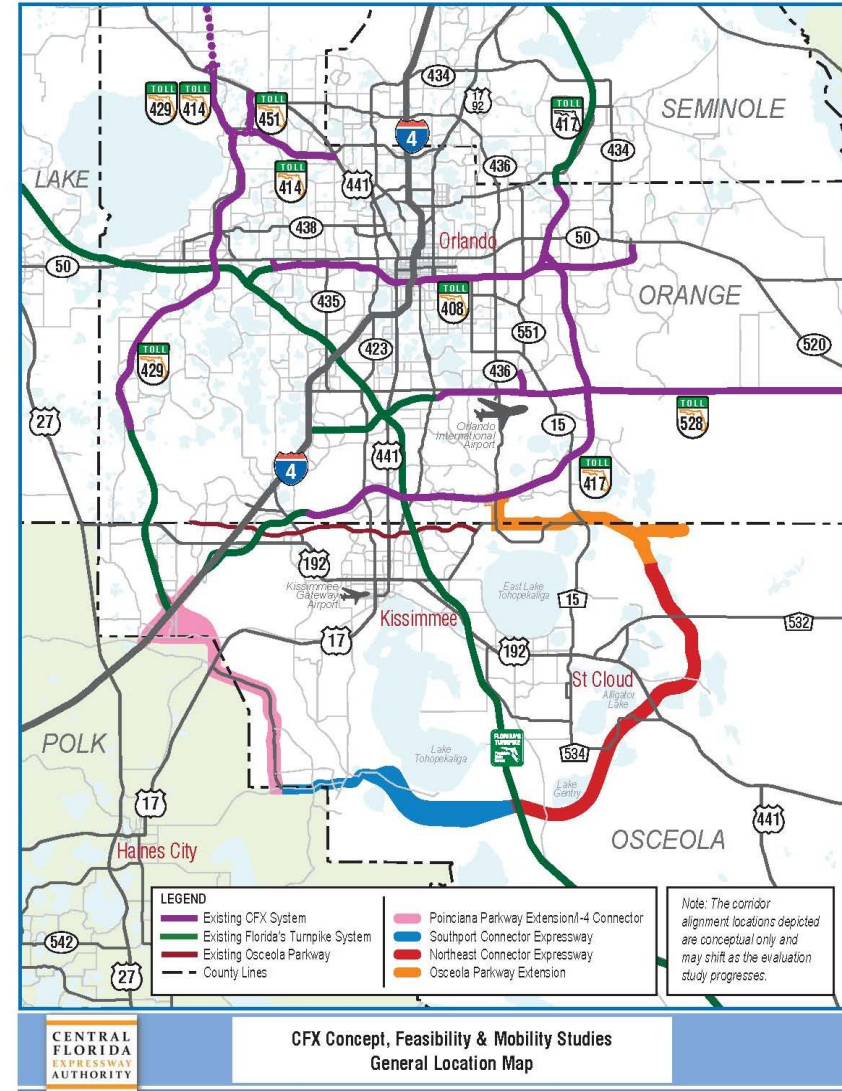
- **Poinciana Parkway Extension / I-4 Connector**  
*Alternative Corridor Evaluation Report (ACER) - November 2015*
  
- **Southport Connector Expressway**  
*Alternative Corridor Evaluation Report (ACER) – October 2015*
  
- **Northeast Connector Expressway**  
(Southport Connector East, from Canoe Creek Road to SR 528)  
*Preliminary Alignment Evaluation – June 2010*
  
- **Osceola Parkway Extension**  
*Project Development & Environment (PD&E) Study – May 2017*

# Concept, Feasibility & Mobility Studies

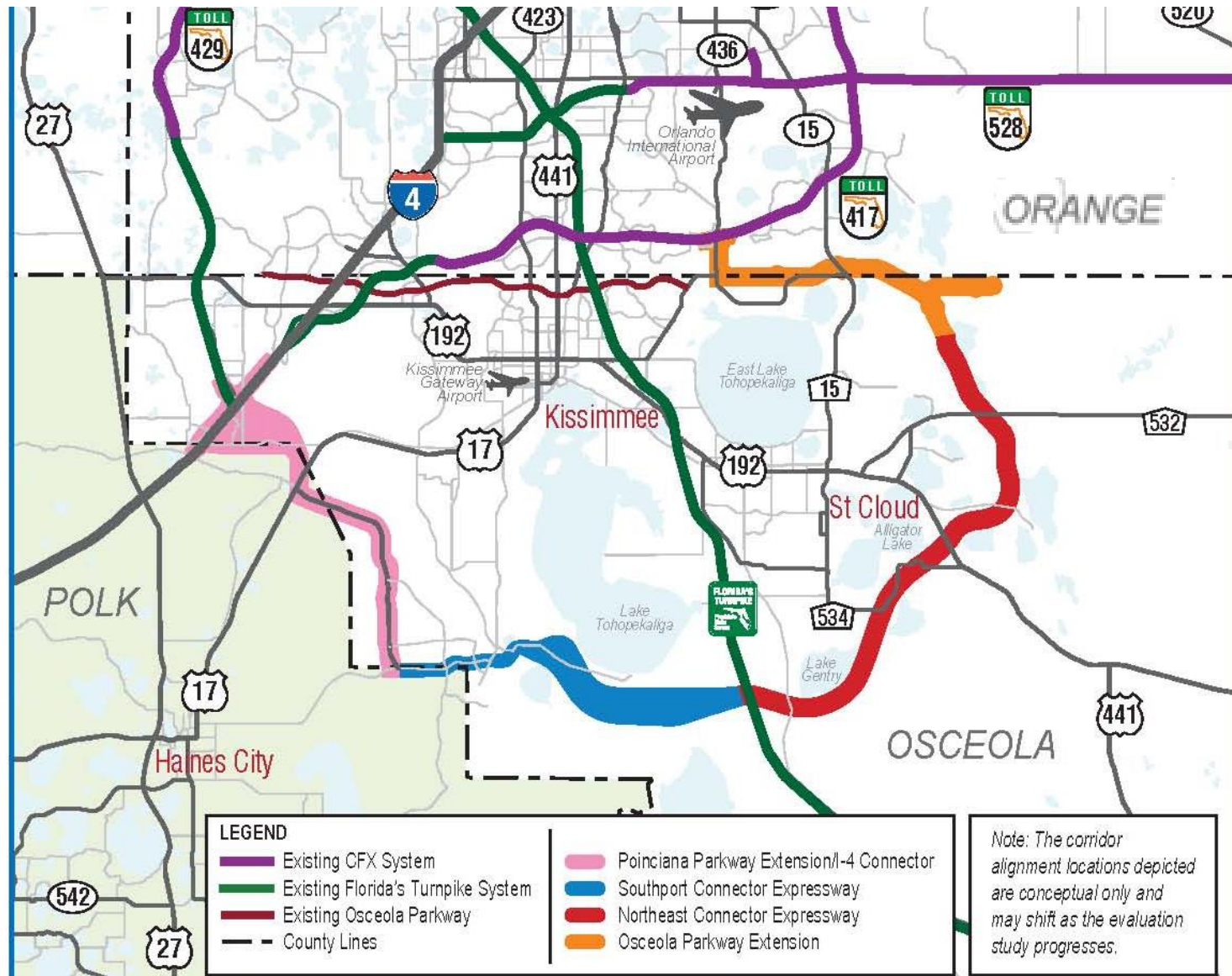
## Study Corridor Overview

The four corridors lie within Osceola, Polk, and Orange Counties and encompass approximately 60 miles of primarily new-location highway.

- Poinciana Parkway Extension / I-4 Connector  
*Approximately 13 miles*
- Southport Connector Expressway  
*Approximately 13 miles*
- Northeast Connector Expressway  
*Approximately 25 miles*
- Osceola Parkway Extension  
*Approximately 9 miles*



# Concept, Feasibility & Mobility Studies



## Concept, Feasibility & Mobility Studies

### Overall Goals of the Project Corridors

- Improve roadway connections from I-4/SR 429 to Florida's Turnpike, to US 192 and SR 417;
- Promote regional connectivity and enhance mobility of the area's growing population and economy via a high-speed expressway;
- Provide additional traffic capacity within the study area;
- Reduce congestion and delays on local roads by providing a new limited-access transportation option;
- Provide for the incorporation of transit options.

**Input from both the EAG and PAG will contribute to the development of the Purpose & Need for each corridor segment.**



# Concept, Feasibility & Mobility Studies

## Study Methodology

The analysis will consist of incorporating and building upon the previous work and coordination achieved from the preceding studies, while conducting a “fresh-look” at the proposed corridor segments and researching recent information that could influence the current decision-making.

- Documentation of the physical, natural, social and cultural environment, and assessment of potential impacts.
- Transportation demands will be determined and range of transportation mobility options and programs will be developed and evaluated.
- If corridor(s) are found to be feasible, would proceed to a Project Development and Environment (PD&E) Study.



# Concept, Feasibility & Mobility Studies

## Public Involvement

Public involvement and stakeholder coordination will be an integral part of the study and multiple opportunities for participation will be provided. CFX anticipates holding several public meetings throughout the corridors during the studies, as well as other community engagement opportunities.

- Environmental Advisory Group & Project Advisory Group
- Public Meetings
  - Kick-off – August 2017
  - Draft Concept Report – January / February 2018
- Board Presentations – Osceola, Orange and Polk Board of County Commissioners
- Meetings with additional stakeholders  
*(land owners, business owners, community groups, etc.)*
- CFX Study Webpage  
<https://www.cfxway.com/agency-information/plans-studies/project-studies/concept-studies/>
- Study Facebook Page  
<https://www.facebook.com/pg/CFXConceptStudies/about/>

# Concept, Feasibility & Mobility Studies

## Advisory Group Roles

### Environmental

- Important component of the natural environment analysis;
- Special advisory resource to CFX and the consultant teams;
- Assists in providing environmental impact input in the evaluation of the feasibility of the project corridors;
- Informs the project team of local knowledge, issues and concerns within the study limits regarding environmental impacts.

### Project

- Important component of the mobility analysis;
- Special advisory resource to CFX and the consultant teams;
- Assists in providing input in the evaluation of the feasibility of the project corridors;
- Informs the project team of local knowledge, issues and concerns within the study limits.

# Northeast Connector Expressway

## Previous Studies / History

- SR 417 Southern Extension Concept Development and Evaluation Study, Wilbur Smith Associates, Inc. (WSA), May 2008
- Preliminary Alignment Evaluation for Southport Connector East from Canoe Creek Road to SR 528, Kimley-Horn and Associates, Inc. (KHA), June 2010
- Northeast Connector Expressway Preliminary Alignment Feasibility Study Tier 1 Corridor Analysis Memorandum, Vanasse Hangen Brustlin, Inc. (VHB), February 2016

# Northeast Connector Expressway WSA Report

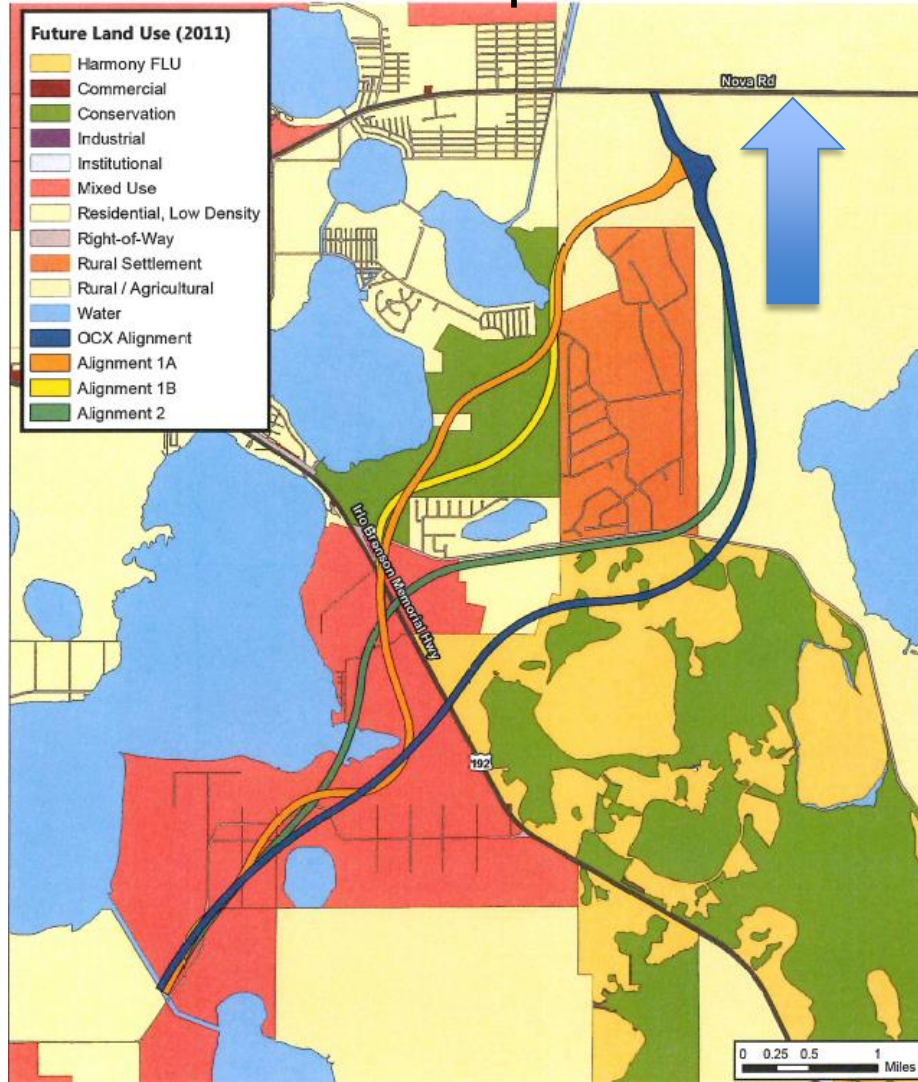


# Northeast Connector Expressway

## KHA Report



# Northeast Connector Expressway VHB Report



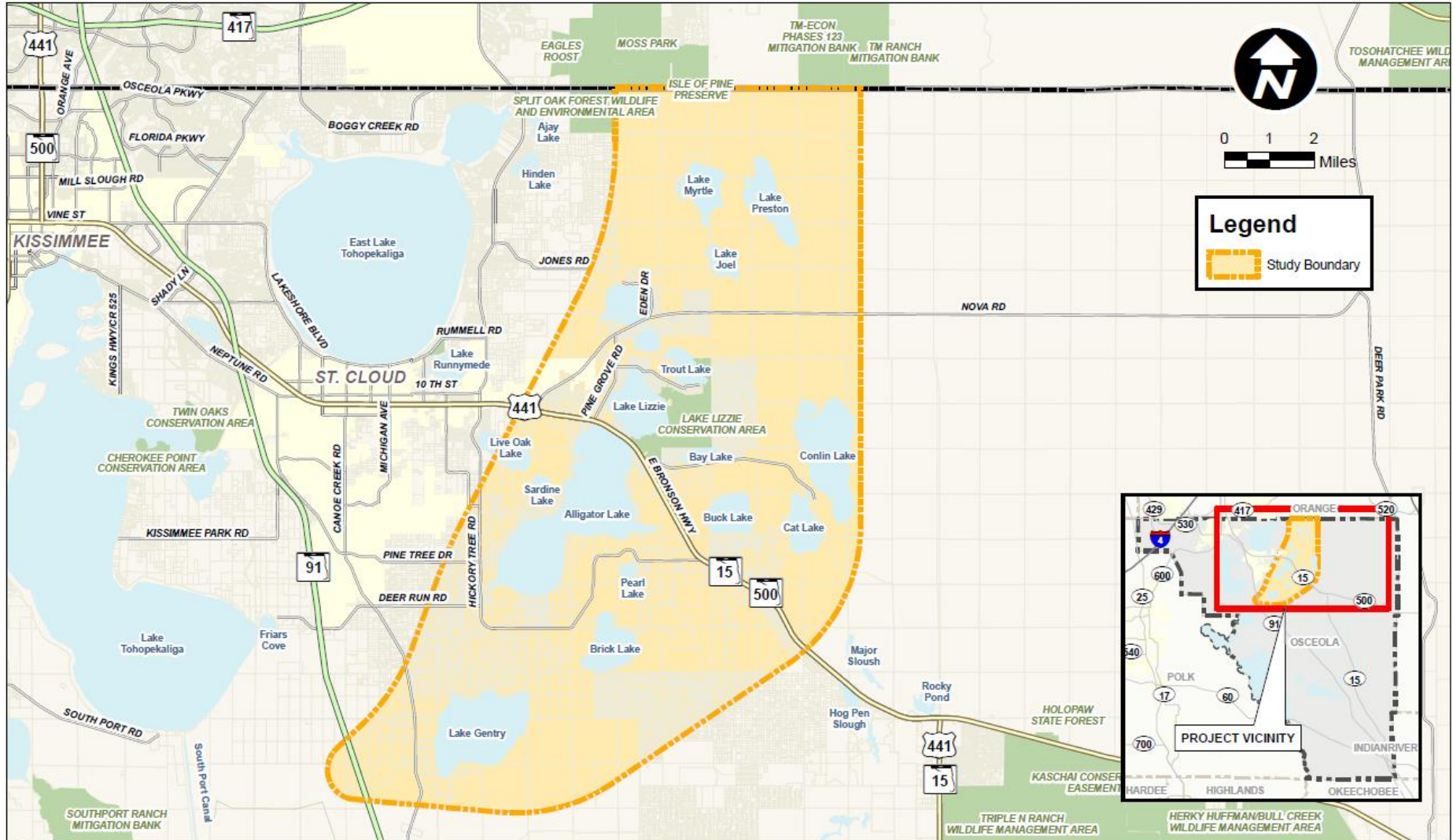


# Northeast Connector Expressway

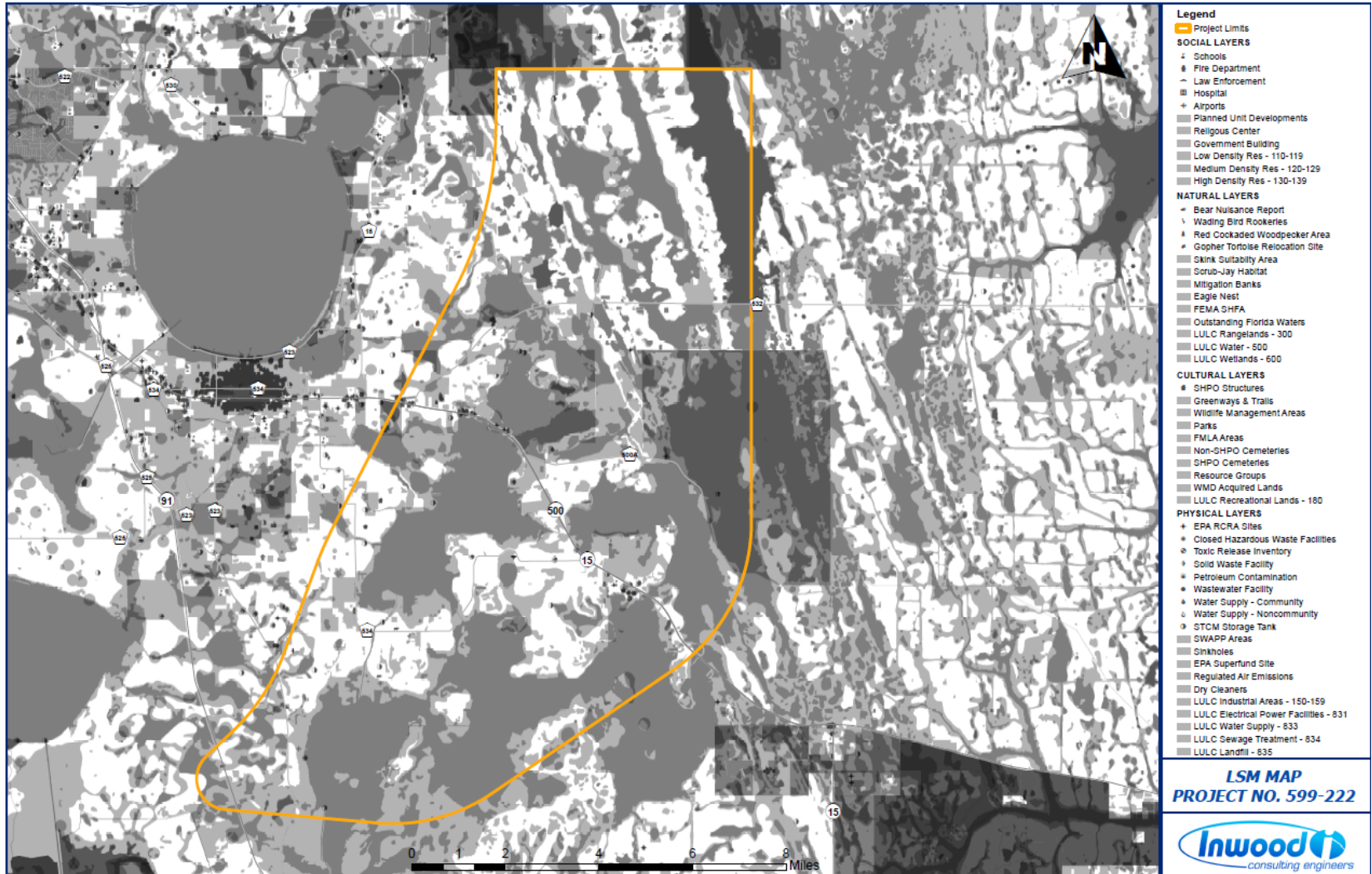
## Previous Studies Evaluation and Recommendations

- Both alignments identified in the KHA report should be carried forward – with further refinements and shifts.
- Alternative alignments should be developed within the OCX Master Plan Northeast Connector Corridor.
- Alternative alignments should be developed outside of the OCX Master Plan Northeast Connector Corridor.

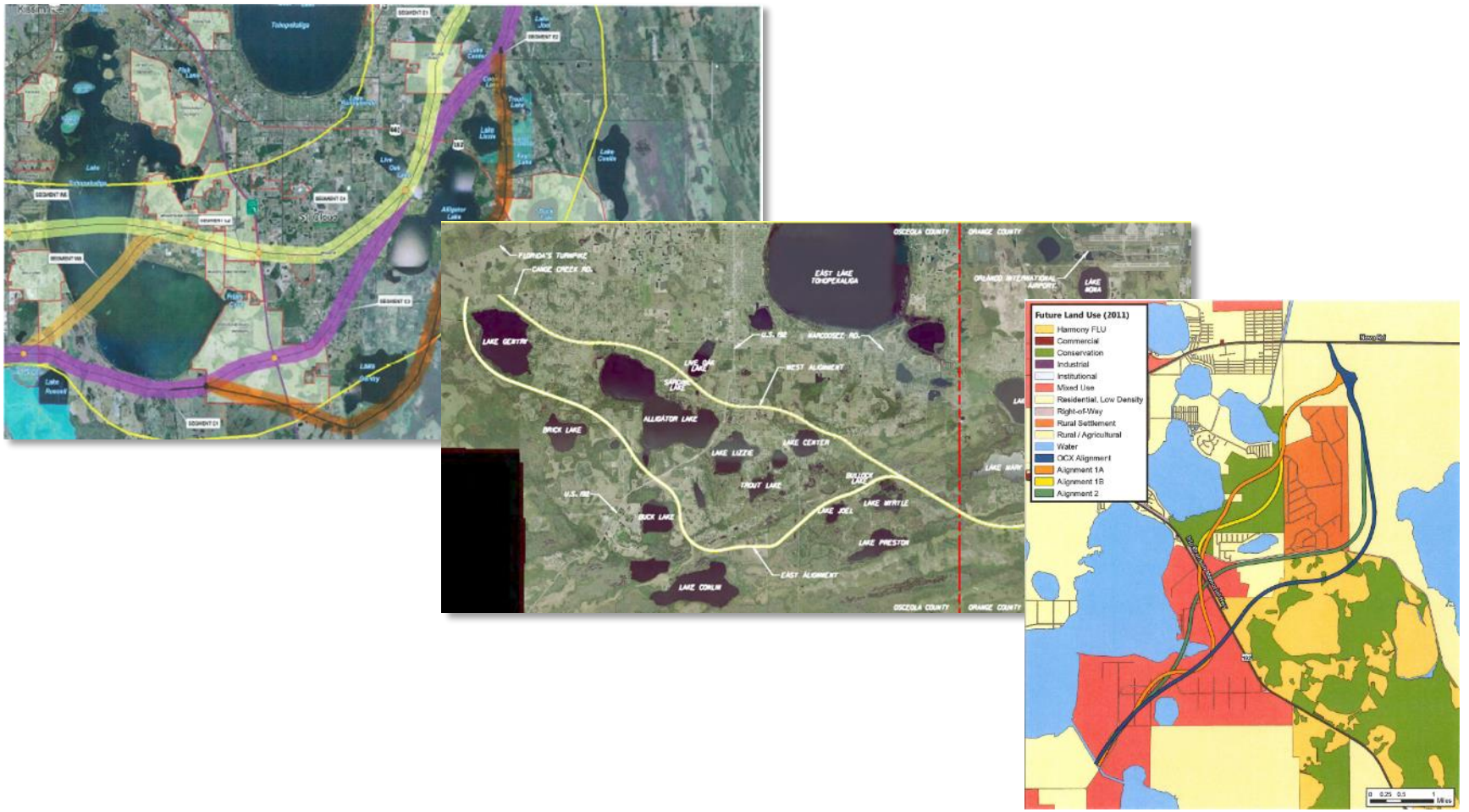
# Northeast Connector Expressway Study Area



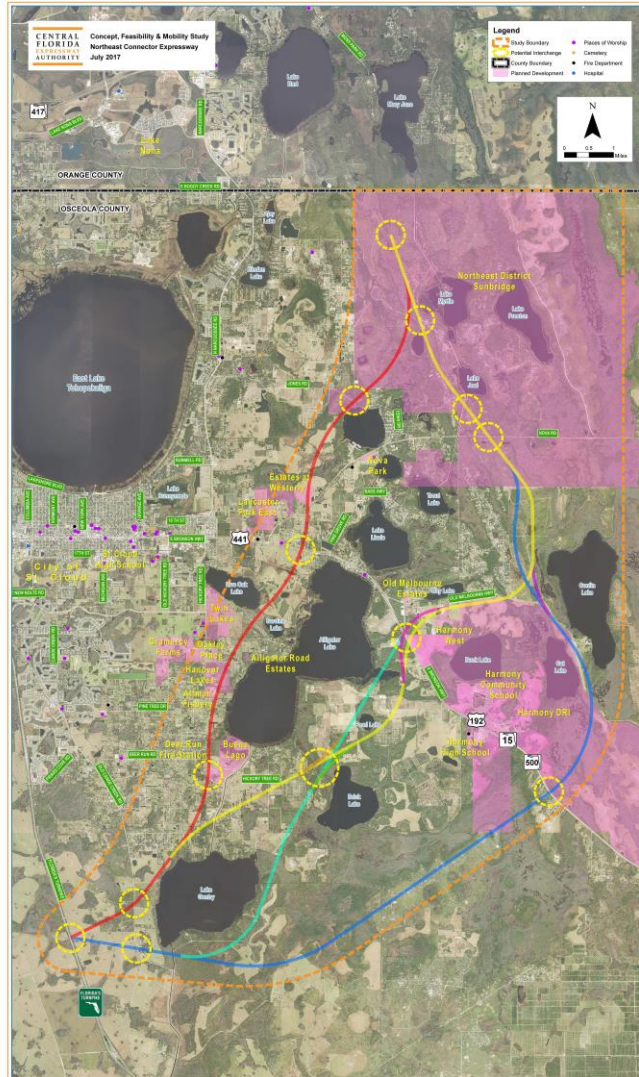
# Northeast Connector Expressway Land Suitability Map



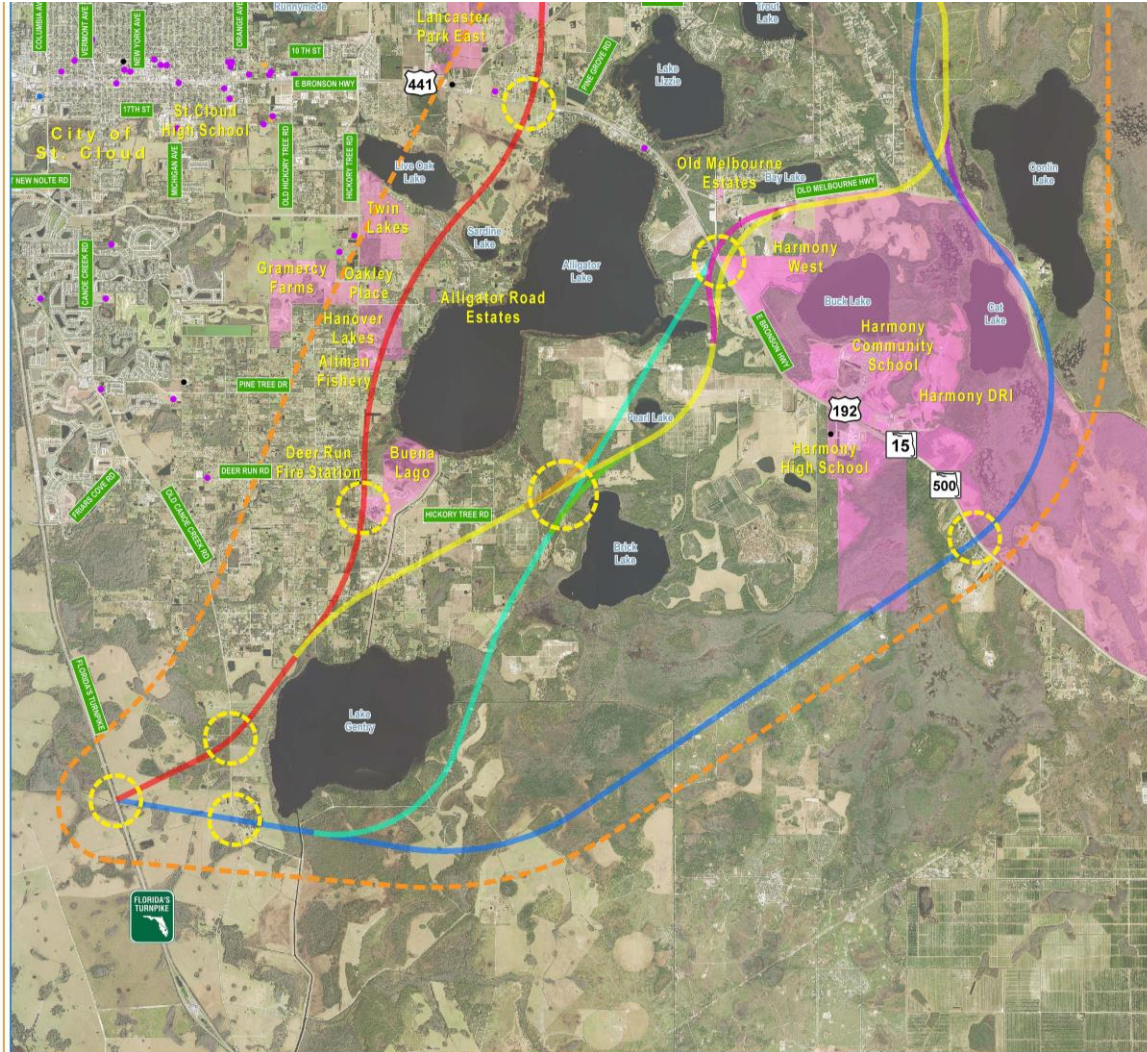
# Northeast Connector Expressway Previous Alignments



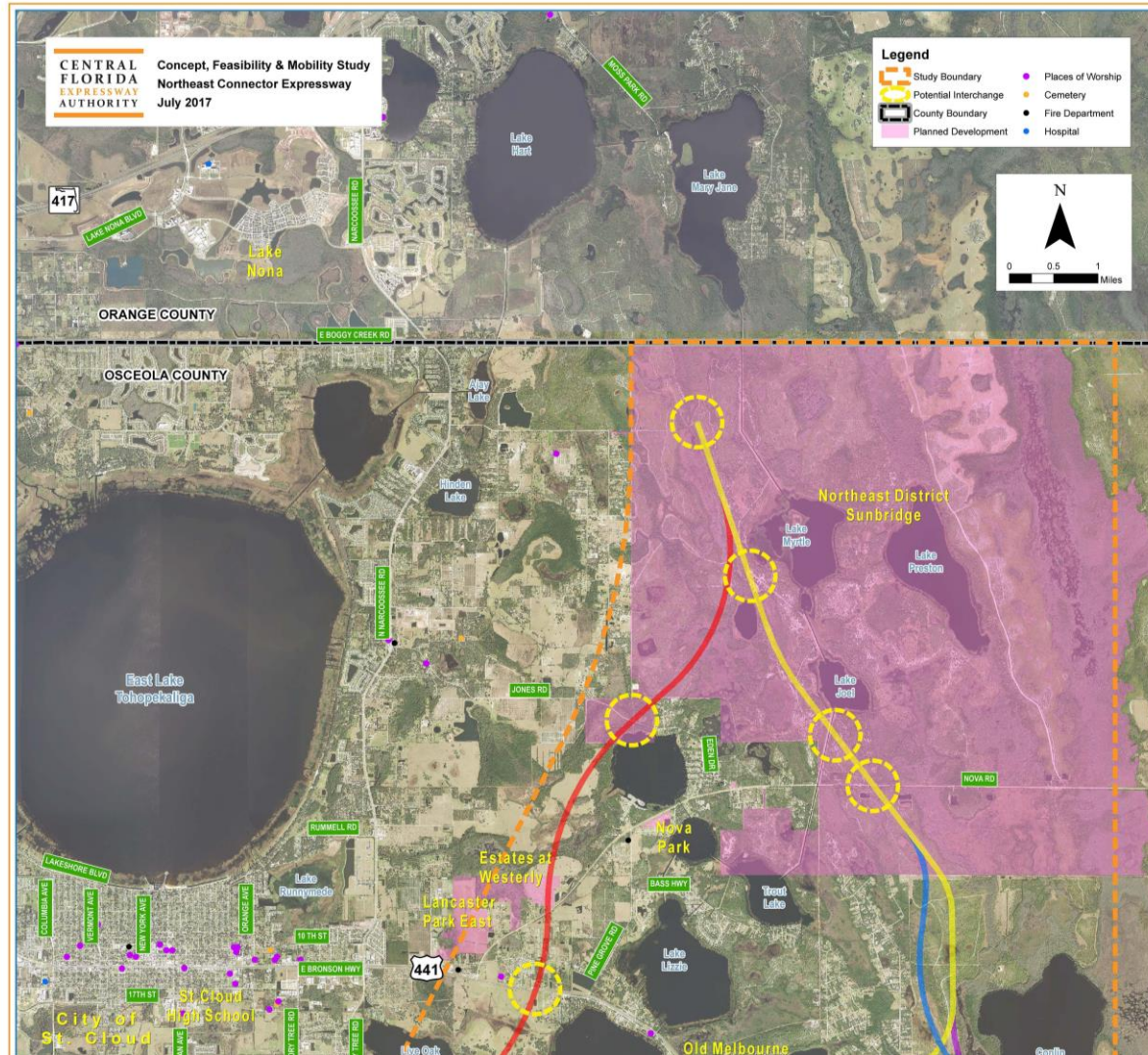
# Northeast Connector Expressway Corridor Alternatives



# Northeast Connector Expressway Corridor Alternatives - South



# Northeast Connector Expressway Corridor Alternatives – North



## Concept, Feasibility & Mobility Studies

# Open Discussion



## Concept, Feasibility & Mobility Studies

# Next Steps

## Concept, Feasibility & Mobility Studies

# Action Items

## Concept, Feasibility & Mobility Studies

### For More Information, Contact:

Mary Brooks

Public Involvement Coordinator

Email: [ConceptStudies@cfxway.com](mailto:ConceptStudies@cfxway.com)

Hotline: 407-802-3210

Web Address:

<https://www.cfxway.com/agency-information/plans-studies/project-studies/concept-studies/>

Follow the Studies on Facebook

<https://www.facebook.com/pg/CFXConceptStudies/about/>