



Concept, Feasibility & Mobility Studies

Southport Connector Expressway

Project Advisory Group
Meeting No. 1

July 19, 2017

Concept, Feasibility & Mobility Studies

This meeting, project, or study is being conducted without regard to race, color, national origin, age, sex, religion, disability or family status. Persons wishing to express their concerns relative to compliance by the Central Florida Expressway Authority (CFX) with Title VI may do so by contacting:

Joseph Passiatore
CFX General Counsel
4974 ORL Tower Road
Orlando, FL 32807
407-690-5000

Joe.Passiatore@CFXWay.com

All inquiries or complaints will be handled according to CFX procedure and in a prompt and courteous manner.

Concept, Feasibility & Mobility Studies

AGENDA

- | | |
|---------------------------------|-----------------------------|
| I. Introductions | VI. PAG Roles |
| II. Study History | VII. Study Corridor Details |
| III. Study Corridor Overview | VIII. Open Discussion |
| IV. Project Goals | IX. Next Steps |
| V. Study Methodology & Schedule | X. Action Items |

Concept, Feasibility & Mobility Studies

Study History

December 19, 2005: Osceola County Comprehensive Plan adopted, proposed several new corridors to meet the county's anticipated growth.

2012: Osceola County Expressway Authority (OCX) began creating its first long-range expressway plan.

August 13, 2013: OCX Master Plan 2040 finalized, defining the county's expressway needs and providing for a program of projects to implement the plan.

September 8, 2016: CFX Board approved an interlocal agreement with Osceola County and OCX to transfer the lead for developing the remainder of the OCX 2040 Master Plan to CFX. CFX incorporated the OCX master plan segments into the CFX master plan.

March 9, 2017: CFX Board approved consultant contracts to conduct the Concept, Feasibility and Mobility studies.

April 2017: CFX commenced four concept, feasibility, and mobility studies to determine if any of the corridors are viable and fundable in accordance with CFX policies and procedures.

Concept, Feasibility & Mobility Studies

Each of the four corridor segments has been previously studied to varying degrees of detail. Our consultant teams will summarize the previous studies of each corridor segment at individual PAG meetings.

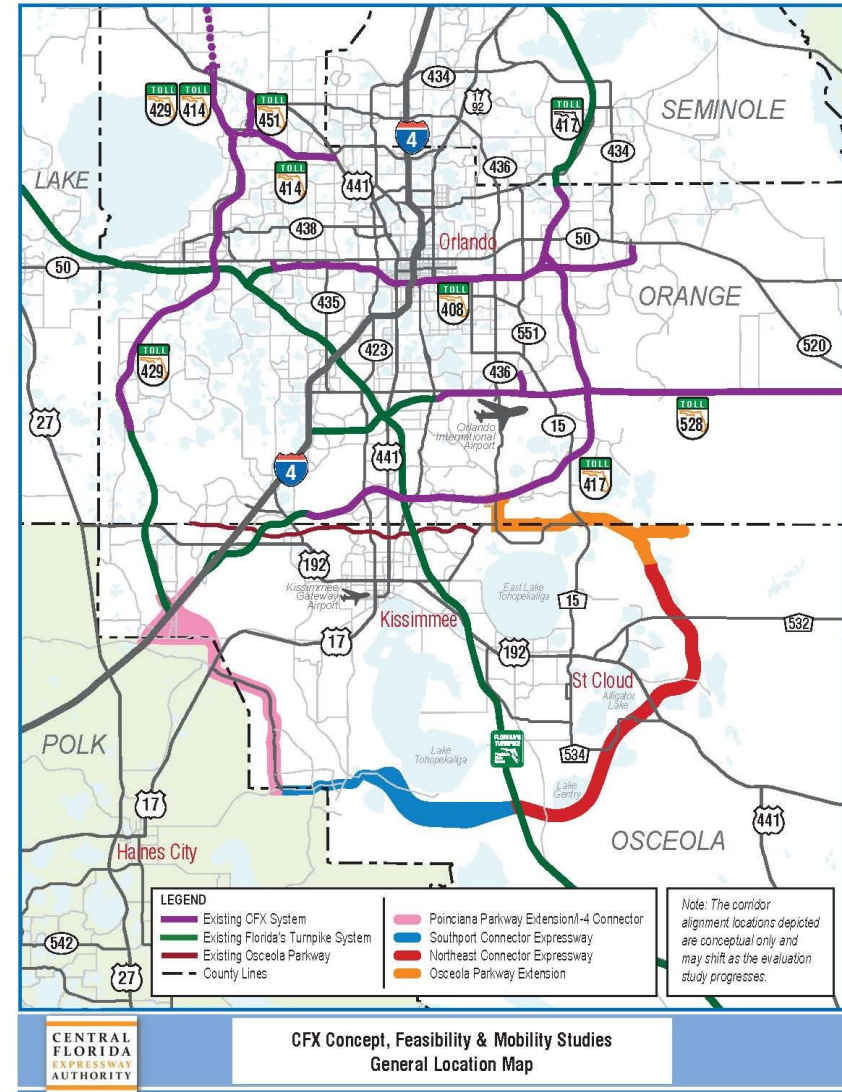
- Poinciana Parkway Extension / I-4 Connector
Alternative Corridor Evaluation Report (ACER) - November 2015
- Southport Connector Expressway
Alternative Corridor Evaluation Report (ACER) – October 2015
- Northeast Connector Expressway
(Southport Connector East, from Canoe Creek Road to SR 528)
Preliminary Alignment Evaluation – June 2010
- Osceola Parkway Extension
Project Development & Environment (PD&E) Study – May 2017

Concept, Feasibility & Mobility Studies

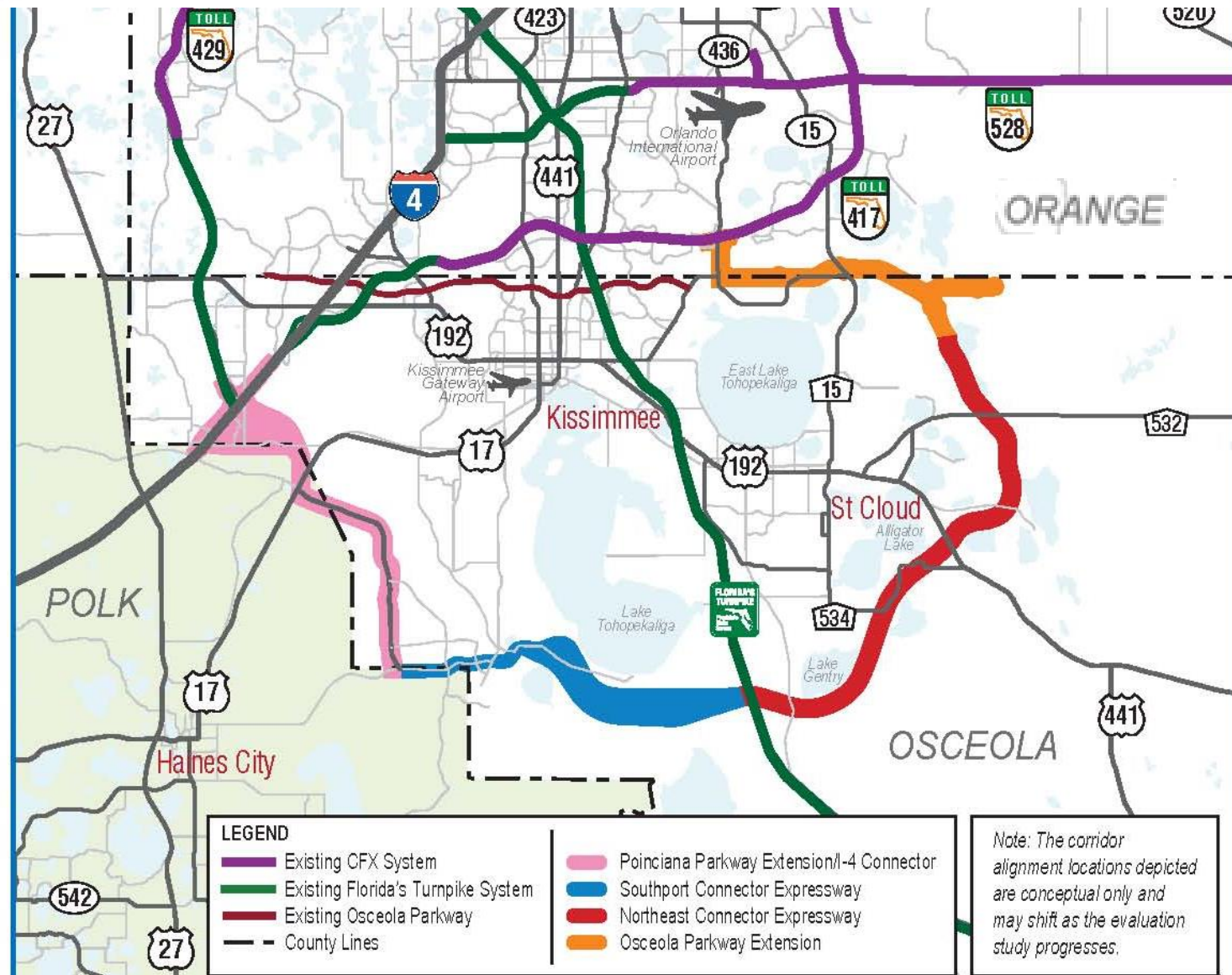
Study Corridor Overview

The four corridors lie within Osceola, Polk, and Orange Counties and encompass approximately 60 miles of primarily new-location highway.

- Poinciana Parkway Extension / I-4 Connector
Approximately 13 miles
- Southport Connector Expressway
Approximately 13 miles
- Northeast Connector Expressway
Approximately 25 miles
- Osceola Parkway Extension
Approximately 9 miles



Concept, Feasibility & Mobility Studies



Concept, Feasibility & Mobility Studies

Overall Goals of the Project Corridors

- Improve roadway connections from I-4/SR 429 to Florida's Turnpike, to US 192 and SR 417;
- Promote regional connectivity and enhance mobility of the area's growing population and economy via a high-speed expressway;
- Provide additional traffic capacity within the study area;
- Reduce congestion and delays on local roads by providing a new limited-access transportation option;
- Provide for the incorporation of transit options.

Input from both the EAG and PAG will contribute to the development of the Purpose & Need for each corridor segment.

Concept, Feasibility & Mobility Studies

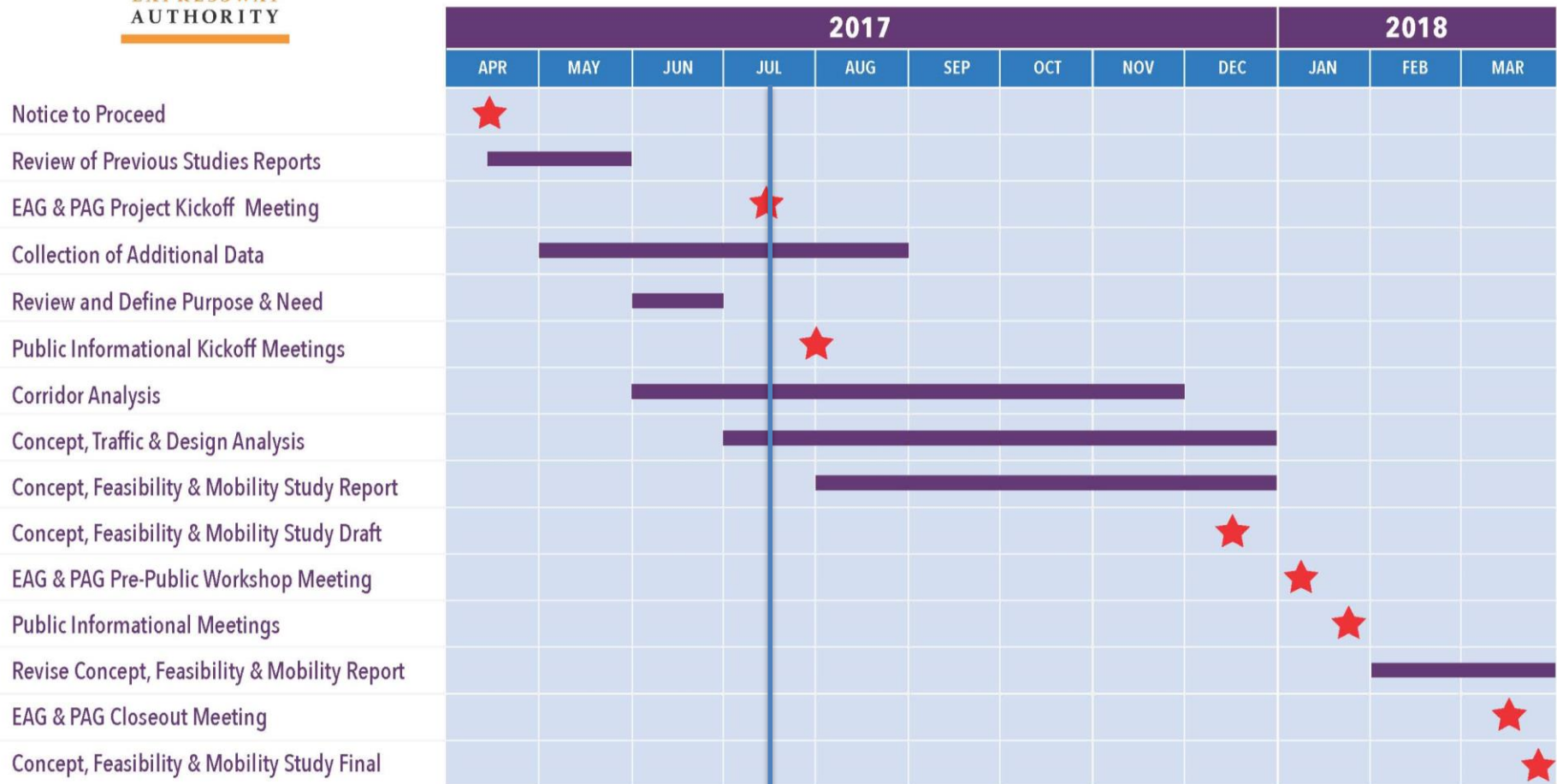
Study Methodology

The analysis will consist of incorporating and building upon the previous work and coordination achieved from the preceding studies, while conducting a “fresh-look” at the proposed corridor segments and researching recent information that could influence the current decision-making.

- Documentation of the physical, natural, social and cultural environment, and assessment of potential impacts.
- Transportation demands will be determined and range of transportation mobility options and programs will be developed and evaluated.
- If corridor(s) are found to be feasible, would proceed to a Project Development and Environment (PD&E) Study.

Concept, Feasibility & Mobility Studies

Proposed Schedule Concept, Feasibility & Mobility Studies



Concept, Feasibility & Mobility Studies

Public Involvement

Public involvement and stakeholder coordination will be an integral part of the study and multiple opportunities for participation will be provided. CFX anticipates holding several public meetings throughout the corridors during the studies, as well as other community engagement opportunities.

- Environmental Advisory Group & Project Advisory Group
- Public Meetings
 - Kick-off – August 2017
 - Draft Concept Report – January / February 2018
- Board Presentations – Osceola, Orange and Polk Board of County Commissioners
- Meetings with additional stakeholders
(land owners, business owners, community groups, etc.)
- CFX Study Webpage
<https://www.cfxway.com/agency-information/plans-studies/project-studies/concept-studies/>
- Study Facebook Page
<https://www.facebook.com/pg/CFXConceptStudies/about/>

Concept, Feasibility & Mobility Studies

Advisory Group Roles

Environmental

- Important component of the natural environment analysis;
- Special advisory resource to CFX and the consultant teams;
- Assists in providing environmental impact input in the evaluation of the feasibility of the project corridors;
- Informs the project team of local knowledge, issues and concerns within the study limits regarding environmental impacts.

Project

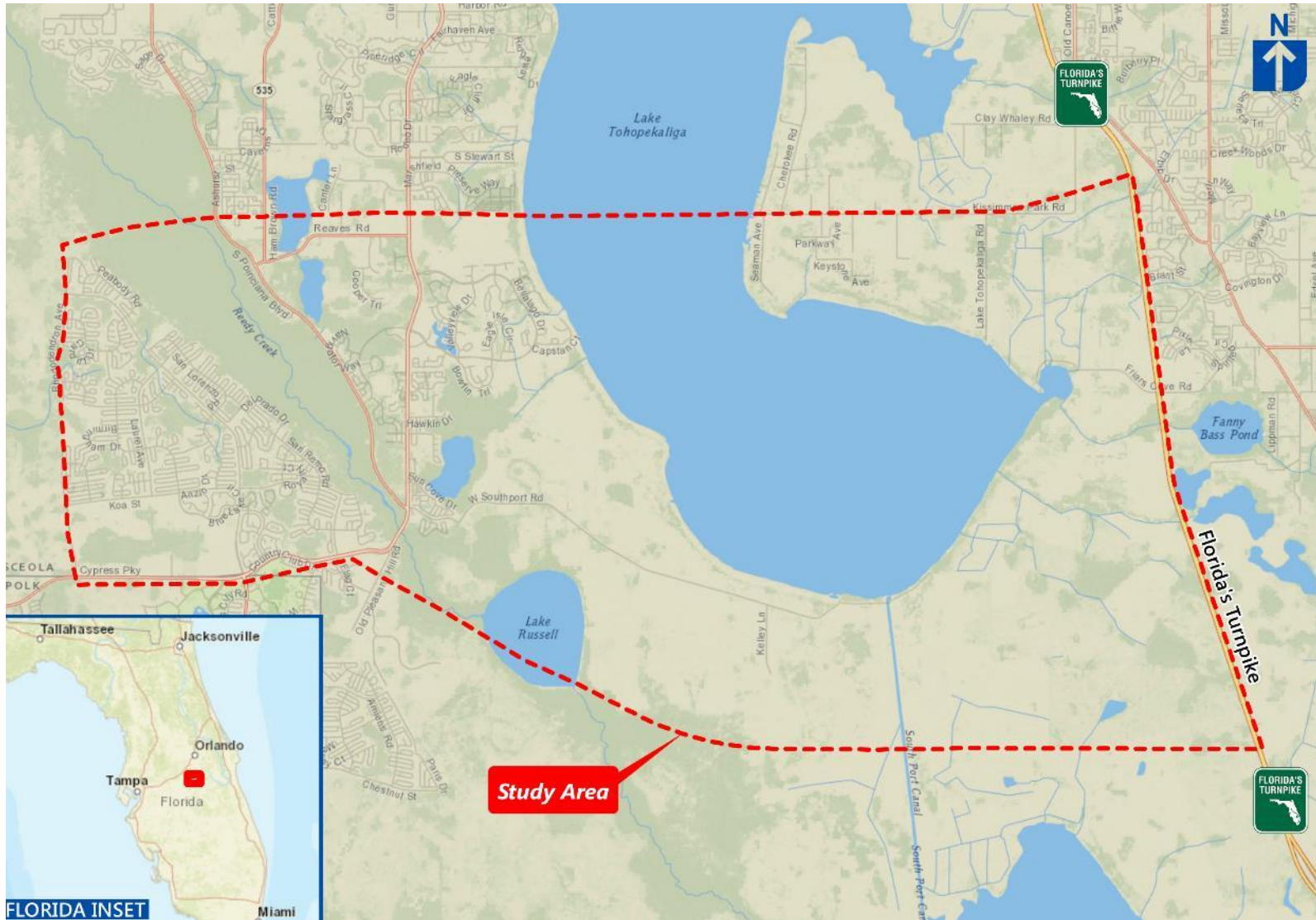
- Important component of the mobility analysis;
- Special advisory resource to CFX and the consultant teams;
- Assists in providing input in the evaluation of the feasibility of the project corridors;
- Informs the project team of local knowledge, issues and concerns within the study limits.

Project Background

FDOT Alternative Corridor Evaluation (ACE) Study

- Advanced Notification Package distributed September 2012
- ETDM Programming Screen was initiated September 2013
- Public Kick-off Meetings (2 locations) September 2013
- Corridor Public Workshops (2 locations) January 2015
- Agency Project Advisory Group (APAG): 3 Meetings
- Alternative Corridor Evaluation Report (ACER) October 2015

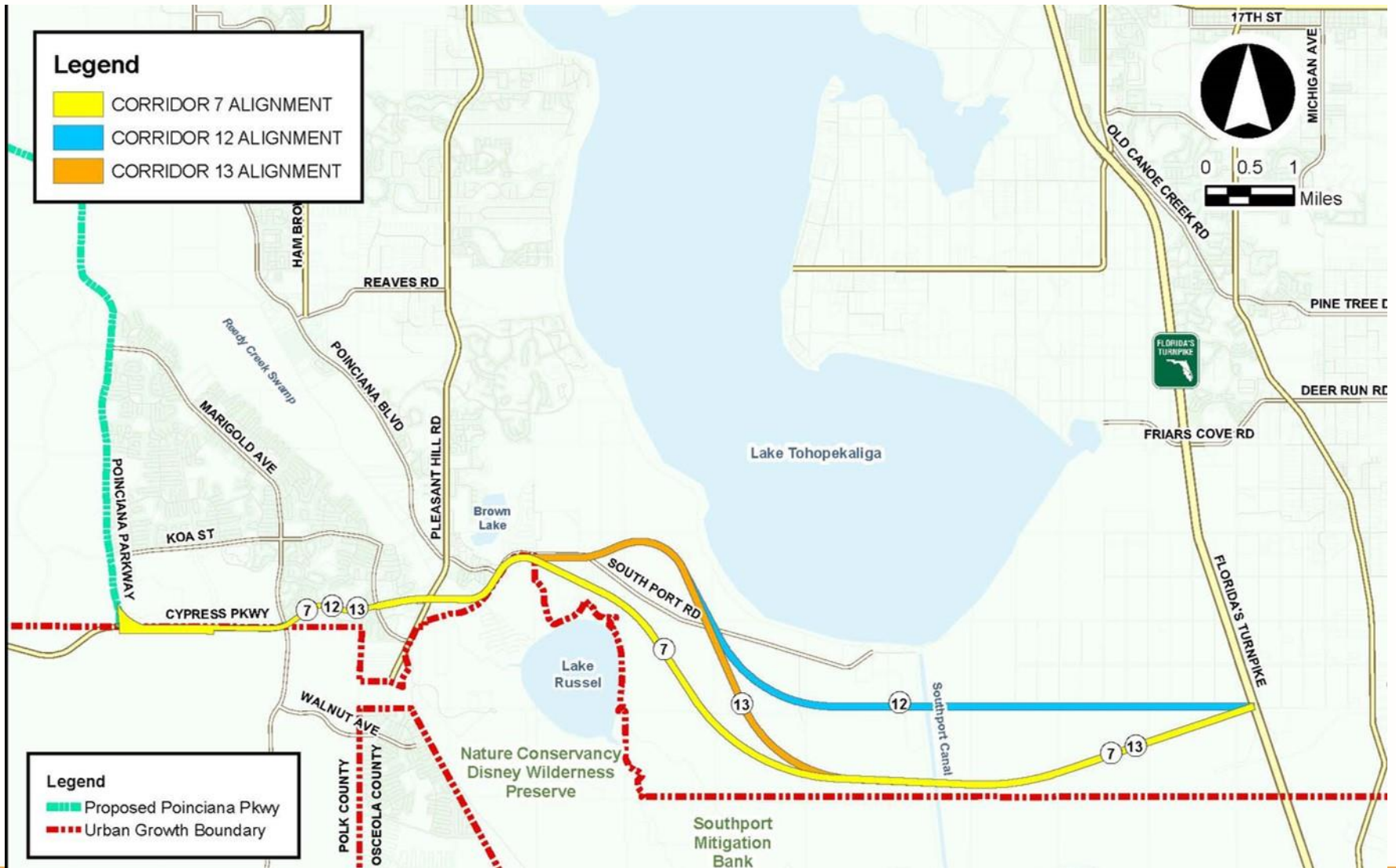
ACE Study Area



ACE Corridors



ACE Recommended Corridors



Southport Connector Expressway

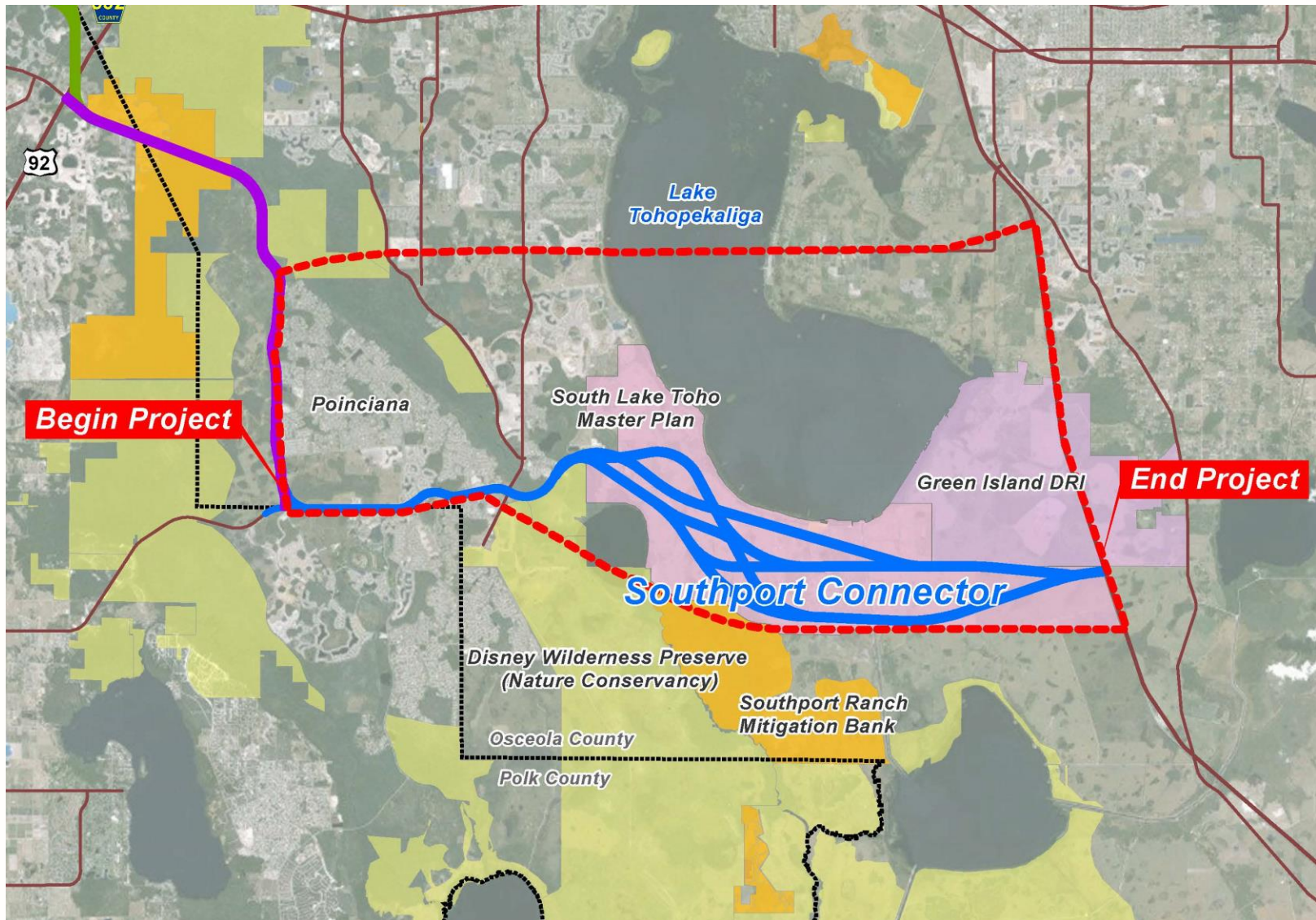
ACER Evaluation Review Technical Memorandum (ACER TECH MEMO)

- Review all ACE documents
- Identify any changed conditions
- In-depth evaluation of the ACE findings, recommendations and commitments

“The study team concurs with the ACE decision to drop all corridors crossing Lake Toho.....

The study team also concurs to co-locate all corridors with the Cypress Parkway between Poinciana Parkway and the Reedy Creek Ecosystem.....”

Study Area



Corridor Characteristics

- Poinciana Parkway to Reedy Creek (Cypress Parkway Segment)



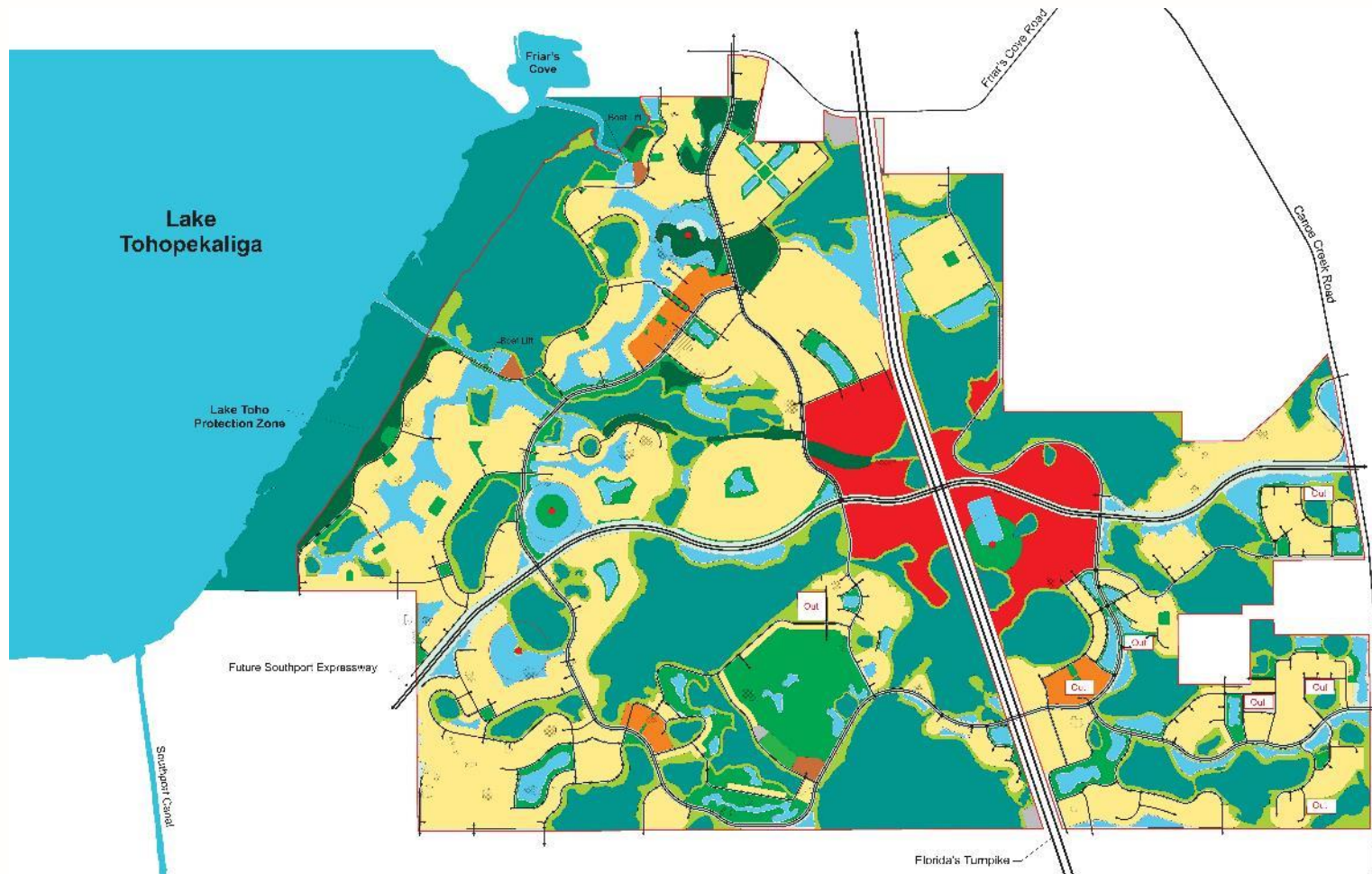
- Reedy Creek to Turnpike



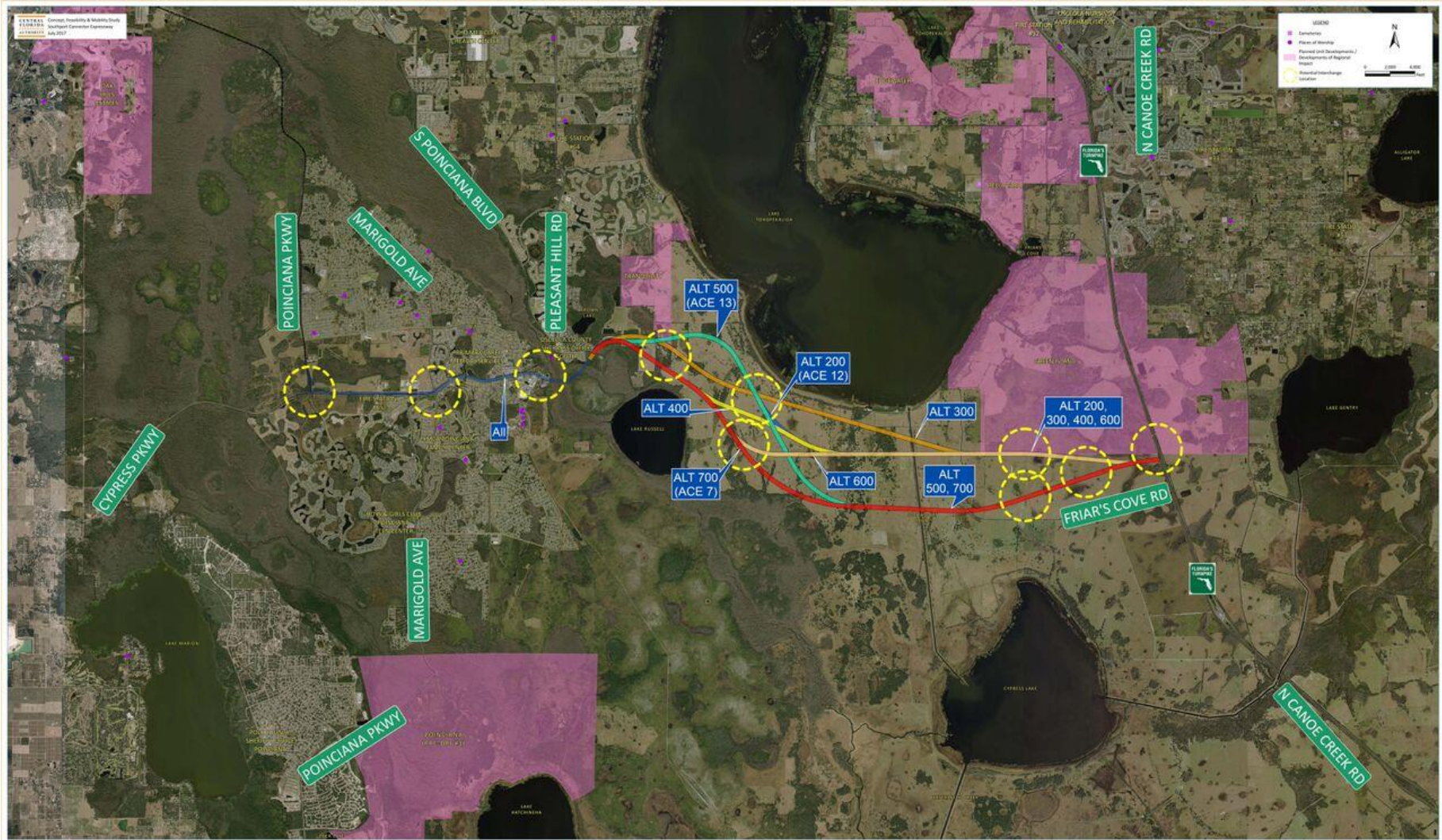
South Lake Toho Master Plan



Green Island DRI



Corridor Alternatives



Corridor Alternatives



Concept, Feasibility & Mobility Studies

Open Discussion

Concept, Feasibility & Mobility Studies

Next Steps

Concept, Feasibility & Mobility Studies

Action Items

Concept, Feasibility & Mobility Studies

For More Information, Contact:

Mary Brooks

Public Involvement Coordinator

Email: ConceptStudies@cfxway.com

Hotline: 407-802-3210

Web Address:

<https://www.cfxway.com/agency-information/plans-studies/project-studies/concept-studies/>

Follow the Studies on Facebook

<https://www.facebook.com/pg/CFXConceptStudies/about/>