

CUSTOMER SERVICE

	Activity		Wait Time	
	Actual	6 mo. Avg	Actual	Target
Service Center: East	8,238	7,573	1:51	<5m
Service Center: West	2,805	3,035	1:59	<5m

SERVICE CENTER: MINUTE INTERVALS <5 5-6 6-7 7-8 8-9 9+

	Actual	6 mo. Avg	Target
Call Center	87,072	78,507	1:58

CALL CENTER: % MINUTE INTERVALS <1 1-2 2-3 3-4 4-5 5+



AVERAGE SPEED: PEAK DIRECTION

	mph	AM Peak (6-9) Avg mph	PM Peak (4-7) Avg mph
SR 408 W. SR 50 to E. SR 50	55-65	54	52
SR 417 Int'l Dr. to Seminole Co. Line	55-70	67	61
SR 528 Sand Lake Rd. to SR 520	70	65	63
SR 429 Seidel Rd. to SR 414	70	67	66
SR 451 SR 429 to US 441	65	62	65
SR 414 US 441 to US 441	65	64	63

LEGEND: <10 11-20 >= 21

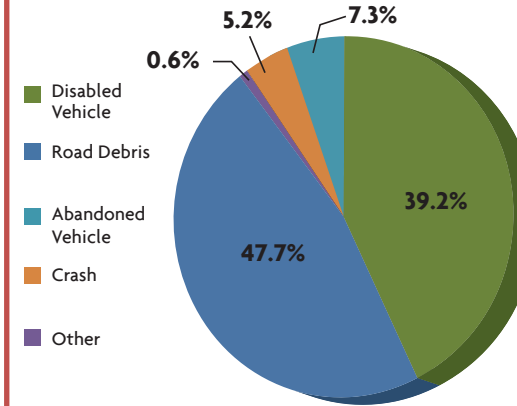
MAJOR CONSTRUCTION PROJECTS

	Contract (millions)	Spent	% Spent	% Time	VAR
SR 408/SR 417 Interchange (Phase II)	\$63.7	\$5.6	9%	10%	
SR 429 Systems Interchange	\$82.3	\$74.0	90%	95%	
SR 408 Widening from SR 417 to Alafaya Trail	\$76.3	\$5.9	8%	10%	
SR 453, Lake County Line to SR 46	\$49.7	\$47.2	95%	93%	
SR 528/Innovation Way Interchange	\$62.4	\$56.1	90%	85%	
SR 429 Systems Interchange to Mt. Plymouth Rd.	\$38.7	\$33.0	85%	90%	

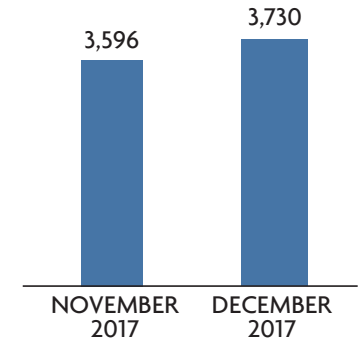
LEGEND: Spent vs. Time <10 11-20 >= 21

SAFETY

ROAD RANGER: CATEGORY OF ASSISTS ON CFX ROADS



ROAD RANGER: NUMBER OF ASSISTS ON CFX ROADS



2015 FATALITIES

1.13	Nationwide: Arterials, Limited Access, Toll Roads
0.26	FDOT: Urban Toll Roads
0.20	CFX: Toll Roads Urban Only

Per 100 Million Vehicles Miles Traveled
2010-2015 – 5 Year Average

WRONG WAY DRIVING (WWD)

Period Covered	Vehicles Detected	Documented Turn Arounds
Dec. 2017	16	14

FINANCIALS

FINANCIALS

FY to Date	Actual	Budget	VAR
Total Revenue	\$211.2	\$214.4	-2%
OM&A Expenses	\$30.0	\$36.3	17%
Net Revenue	\$96.8	\$93.2	4%

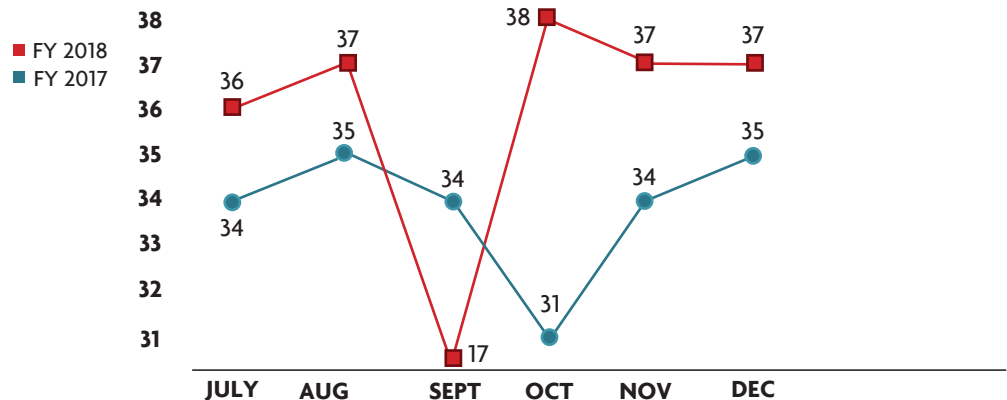
LEGEND: >= 0 -0.1 to -10 </= -10

DEBT SERVICE

Year to Date	Actual	Budget
Senior Lien	2.23	2.23
Subordinate Lien	2.13	2.12

LEGEND: >1.45 1.21 to 1.44 </= 1.2

TOTAL TRANSACTIONS ON CFX SYSTEM* (millions)



*All plazas had tolls suspended in Sept. due to Hurricane Irma from 9/5/17 until 9/21/17.