



Concept, Feasibility & Mobility Studies

Northeast Connector Expressway

Project Advisory Group
Meeting No. 2

February 6, 2018

Concept, Feasibility & Mobility Studies

This meeting, project, or study is being conducted without regard to race, color, national origin, age, sex, religion, disability or family status. Persons wishing to express their concerns relative to compliance by the Central Florida Expressway Authority (CFX) with Title VI may do so by contacting:

Joseph Passiatore
CFX General Counsel
4974 ORL Tower Road
Orlando, FL 32807
407-690-5000

Joe.Passiatore@CFXWay.com

All inquiries or complaints will be handled according to CFX procedure and in a prompt and courteous manner.

Concept, Feasibility & Mobility Studies

AGENDA

- I. Introductions
- II. Study History
- III. Study Corridor Overview
- IV. Project Goals
- V. Study Methodology & Schedule
- VI. Public Involvement
- VII. Study Corridor Updates & Evaluation Matrices
- VIII. Open Discussion
- IX. Next Steps
- X. Action Items

Concept, Feasibility & Mobility Studies

Study History

December 19, 2005: Osceola County Comprehensive Plan adopted, proposed several new corridors to meet the county's anticipated growth.

2012: Osceola County Expressway Authority (OCX) began creating its first long-range expressway plan.

August 13, 2013: OCX Master Plan 2040 finalized, defining the county's expressway needs and providing for a program of projects to implement the plan.

September 8, 2016: CFX Board approved an interlocal agreement with Osceola County and OCX to transfer the lead for developing the remainder of the OCX 2040 Master Plan to CFX. CFX incorporated the OCX master plan segments into the CFX master plan.

March 9, 2017: CFX Board approved consultant contracts to conduct the Concept, Feasibility and Mobility studies.

April 2017: CFX commenced four concept, feasibility, and mobility studies to determine if any of the corridors are viable and fundable in accordance with CFX policies and procedures.

Concept, Feasibility & Mobility Studies

Each of the four corridor segments has been previously studied to varying degrees of detail. Our consultant teams have reviewed and evaluated the previous studies for each corridor segment.

- Poinciana Parkway Extension / I-4 Connector
Alternative Corridor Evaluation Report (ACER) - November 2015

- Southport Connector Expressway
Alternative Corridor Evaluation Report (ACER) – October 2015

- Northeast Connector Expressway
(Southport Connector East, from Canoe Creek Road to SR 528)
Preliminary Alignment Evaluation – June 2010

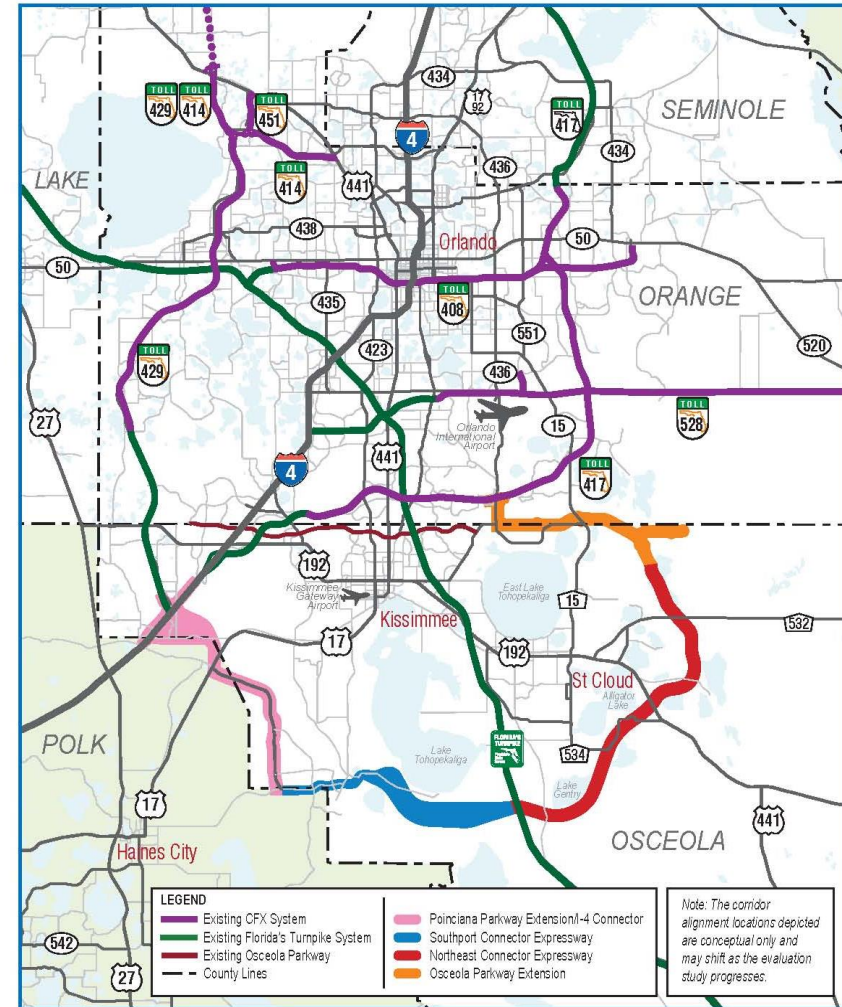
- Osceola Parkway Extension
Project Development & Environment (PD&E) Study – May 2017

Concept, Feasibility & Mobility Studies

Study Corridor Overview

The four corridors lie within Osceola, Polk, and Orange Counties and encompass approximately 60 miles of primarily new-location highway.

- Poinciana Parkway Extension / I-4 Connector
Approximately 13 miles
- Southport Connector Expressway
Approximately 13 miles
- Northeast Connector Expressway
Approximately 25 miles
- Osceola Parkway Extension
Approximately 9 miles



Concept, Feasibility & Mobility Studies

Overall Goals of the Project Corridors

- Improve roadway connections from I-4/SR 429 to Florida's Turnpike, to US 192 and SR 417;
- Promote regional connectivity and enhance mobility of the area's growing population and economy via a high-speed expressway;
- Provide additional traffic capacity within the study area;
- Reduce congestion and delays on local roads by providing a new limited-access transportation option;
- Provide for the incorporation of transit options.

Input from both the EAG and PAG contributed to the development of the Purpose & Need for each corridor segment.

Concept, Feasibility & Mobility Studies

Study Methodology

The analysis has incorporated and built upon the previous work and coordination achieved from the preceding studies, while conducting a “fresh-look” at the proposed corridor segments and researching recent information that could influence the current decision-making.

- Documentation of the physical, natural, social and cultural environment, and assessment of potential impacts.
- Transportation demands have been determined and a range of transportation mobility options and programs are being developed and evaluated.
- If corridor(s) are found to be feasible, would proceed to a Project Development and Environment (PD&E) Study.

Concept, Feasibility & Mobility Studies

Public Involvement

Public involvement and stakeholder coordination are an integral part of the study and multiple opportunities for participation are being provided.

- Environmental Advisory Group & Project Advisory Group (July, January & February)
- Public Meetings
 - Kick-off: Sept. 19 & 26, Oct. 5, 2017 (400+ attendees, 284 comments received)
 - Draft Concept Report: Feb. 13, 15 & 21
- Board Presentations:
 - Polk County Board of Commissioners: Aug. 8
 - Osceola County Expressway Authority: Oct. 10
 - Central Florida Expressway Authority: Oct. 12
- Additional Stakeholder Meetings - Ongoing
- CFX Study Webpage:



<https://www.cfxway.com/agency-information/plans-studies/project-studies/public-involvement/>

- Study Facebook Page - <https://www.facebook.com/pg/CFXConceptStudies/about/>

Concept, Feasibility & Mobility Studies

Northeast Connector Expressway

Northeast Connector Expressway

Previous Studies / History

- SR 417 Southern Extension Concept Development and Evaluation Study, Wilbur Smith Associates, Inc. (WSA), May 2008
- Preliminary Alignment Evaluation for Southport Connector East from Canoe Creek Road to SR 528, Kimley-Horn and Associates, Inc. (KHA), June 2010
- Northeast Connector Expressway Preliminary Alignment Feasibility Study Tier 1 Corridor Analysis Memorandum, Vanasse Hangen Brustlin, Inc. (VHB), February 2016

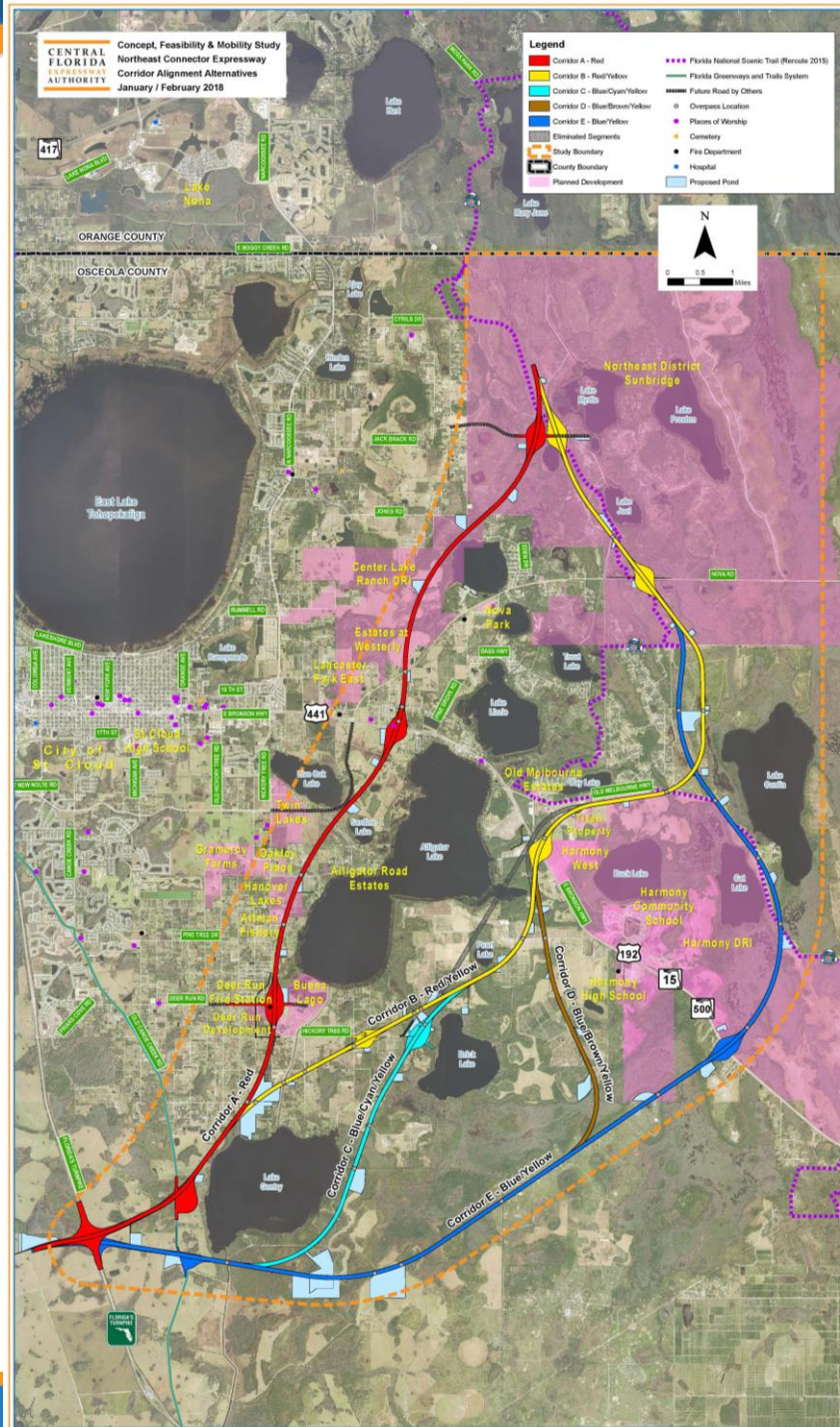
Northeast Connector Expressway

Previous Studies' Evaluation and Recommendations

- Both alignments identified in the KHA report should be carried forward – with further refinements and shifts.
- Alternative alignments should be developed within – and outside of – the OCX Master Plan Northeast Connector Corridor.

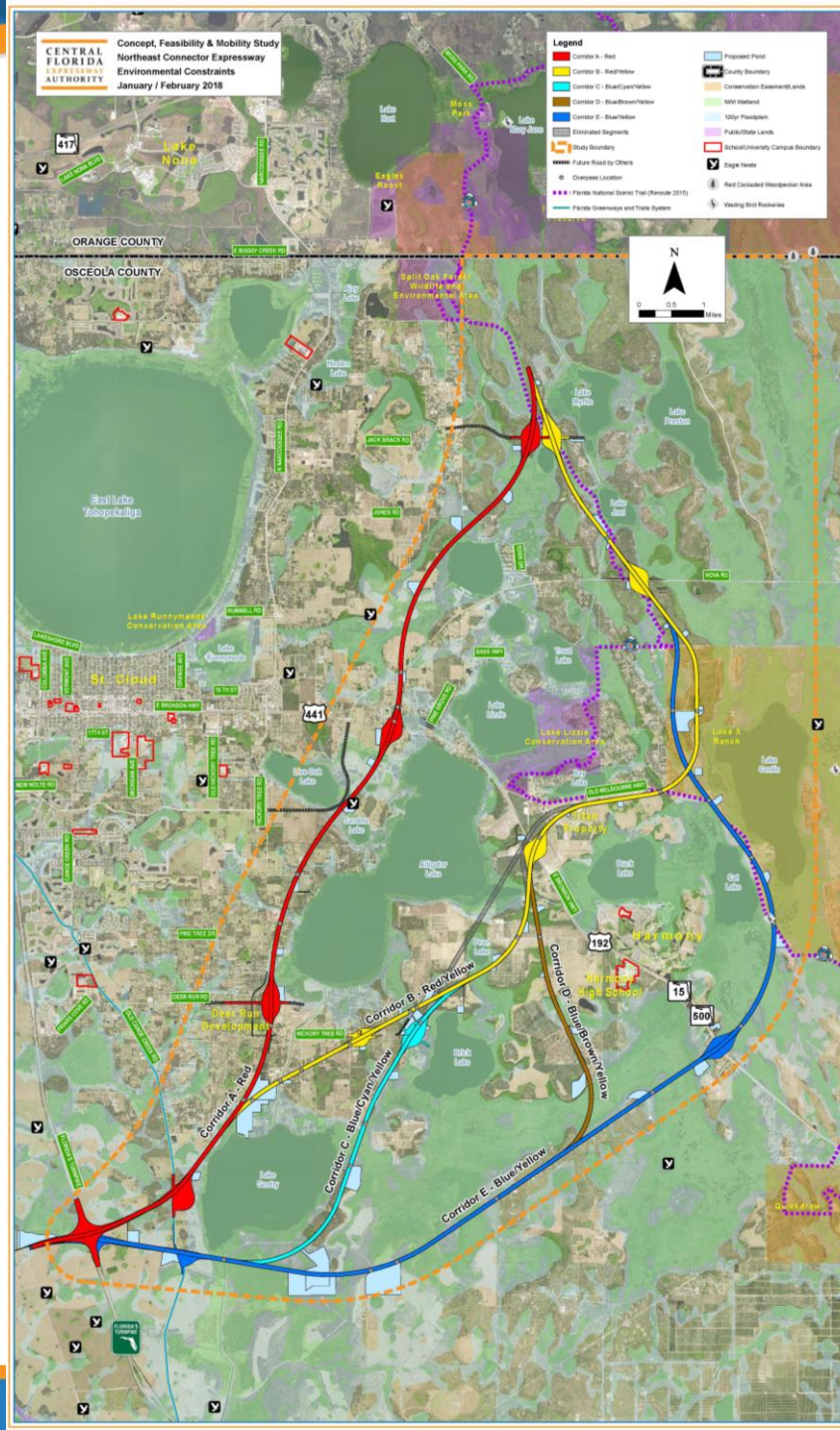
Northeast Connector Expressway

Alternative Corridors



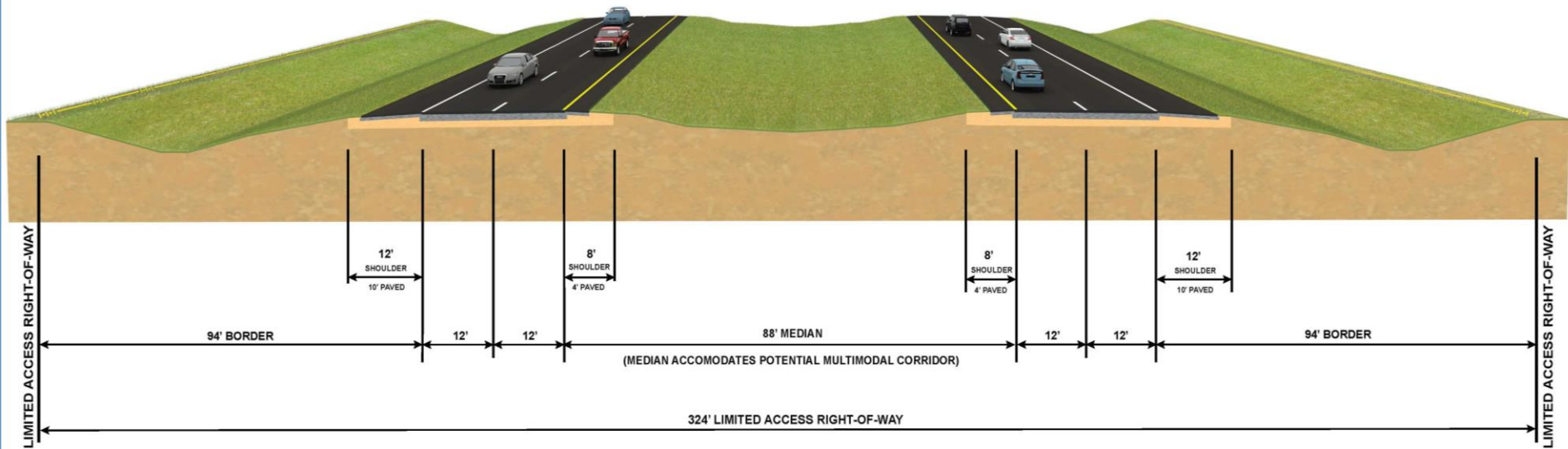
Northeast Connector Expressway

Environmental Constraints



Northeast Connector Expressway

Typical Section



Evaluation Matrix

Evaluation Criteria	Unit of Measure	Corridor A-Red	Corridor B-Red/Yellow	Corridor C-Blue/Cyan/Yellow	Corridor D-Blue/Brown/Yellow	Corridor E-Blue/Yellow	
Design							
Alternative Length (approximate)	Miles	16	19	21	23	23	
Proposed Right-of-Way Width (general and varies at interchanges)	Feet	324	324	324	324	324	
Proposed Bridges	total structures per alternative	Structures	24	34	30	28	32
	total length of all structures	Feet	2,006	3,355	2,723	2,626	4,209
Proposed Interchanges	Number	5	6	6	5	5	
Projected 2045 Annual Average Daily Traffic (AADT) Volume (as a tolled facility) ⁽¹⁾	Vehicles	25,600	16,900	16,900	13,700	13,900	
Physical							
Major Utility Conflicts - Existing	No. of Conflicts	5	5	3	3	2	
Major Utility Conflicts - Planned	No. of Conflicts	8	5	0	0	0	
Contamination Sites & Facilities	No. of Conflicts	1	0	0	0	1	
Railroad Involvement	No. of Conflicts	0	0	0	0	0	
Cultural Environment Effects							
Public Lands (public recreation lands, wildlife refuges, etc.)	Acres	1	0	0	0	0	
Section 4(f) Coordination Required	Y/N	N	N	N	N	N	
Potential Historic Resources	No. of Conflicts	15	8	2	1	0	
Potential Historic Linear Resources (canals/roads)	No. of Resources	1	1	1	1	1	
Potential Archaeological Resources	No. of Resources	0	0	0	0	0	
Natural Environment							
Water Features							
Ponds / Lakes	Acres	11	13	16	9	6	
Canals / Regulated Waterways	No. of Conflicts	1	3	3	2	2	
Flood Hazard Areas - 100 Year Floodplain	Acres	551	476	712	972	1,132	
Wetlands (non-forested and forested)	Acres	140	210	231	324	357	
Potential Habitat - Federal Listed Species	Acres	1,044	1,153	1,077	1,249	1180	
Potential Habitat - State Listed Species	Acres	1,110	1,216	1,208	1,281	1256	
Potential Bald Eagle Nest	Y/N	Y	N	N	N	N	
Potential Species Impacts (composite rating)	Rating (high, medium, low)	High	High	Medium	Medium	Low	
Mitigation Banks							
Lake X Ranch Mitigation Bank	Acres	0	92	92	92	150	
Conservation Easement	Acres	0	0	0	0	0	
Social							
Right-of-Way Area (including proposed ponds)	Acres	1,349	1,447	1,581	1,707	1,758	
Potential Residential Impacts (includes partially impacted parcels)	Total Parcels	367	74	22	28	3	
Existing	Parcels	181	55	3	9	3	
Planned	Parcels	186	19	19	19	0	
Potential Non-Residential Impacts (includes partially impacted parcels)	Total Parcels	232	152	141	118	122	
Existing	Parcels	232	151	140	117	122	
Planned	Parcels	0	1	1	1	0	
Community Facilities	No. of Conflicts	2	0	0	0	0	
Parks and Recreational Facilities (public and private)	No. of Conflicts	0	0	0	0	0	
Trails	No. of Conflicts	2	5	5	5	7	
Community Cohesion Effects	Rating (high, medium, low)	Medium	Medium	Low	Low	Low	
Socioeconomic Impacts to Special Populations	Rating (high, medium, low)	Medium	Low	Low	Low	Low	
Proposed Development (PD) / Development of Regional Impact (DRI)	Acres	622	761	806	890	887	
Estimated Costs⁽²⁾							
Roadway Construction		\$339,400,000	\$372,000,000	\$393,200,000	\$488,500,000	\$500,600,000	
Bridge Construction		\$67,600,000	\$92,500,000	\$79,900,000	\$73,200,000	\$98,200,000	
Interchange Construction		\$457,800,000	\$475,200,000	\$519,800,000	\$483,200,000	\$493,400,000	
Toll Collection Equipment		\$5,100,000	\$5,100,000	\$5,100,000	\$5,100,000	\$5,100,000	
Right-of-Way Areas (including proposed ponds)		\$298,900,000	\$242,600,000	\$210,600,000	\$201,800,000	\$210,800,000	
Mitigation (wetlands & wildlife)		\$26,900,000	\$64,800,000	\$84,200,000	\$80,100,000	\$83,900,000	
Total Estimated Alternative Costs		\$1,195,700,000	\$1,252,200,000	\$1,292,800,000	\$1,331,700,000	\$1,392,000,000	
Projected Traffic Revenue (2045)		TBD	TBD	TBD	TBD	TBD	

Concept, Feasibility & Mobility Studies

Open Discussion

Concept, Feasibility & Mobility Studies

Next Steps

- PAG Meetings – Feb. 6 & 8
- Public Meetings – Feb. 13, 15 & 21
- Consultants Update Draft Concept Report
- Board Presentations – TBD
- CFX Board Concept Draft Report Review & Discussion –
March 8
- Consultants Finalize Concept Report

Concept, Feasibility & Mobility Studies

Action Items

Concept, Feasibility & Mobility Studies

For More Information, Contact:

Mary Brooks

Public Involvement Coordinator

Email: ConceptStudies@cfxway.com

Hotline: 407-802-3210

Web Address:

<https://www.cfxway.com/agency-information/plans-studies/project-studies/public-involvement/>

Follow the Studies on Facebook

<https://www.facebook.com/pg/CFXConceptStudies/about/>

