

The logo for the Central Florida Expressway Authority is centered in the upper half of the image. It consists of a white rectangular box with two horizontal orange bars, one above and one below the text. The text is arranged in four lines: 'CENTRAL' and 'FLORIDA' in black, 'EXPRESSWAY' in orange, and 'AUTHORITY' in black. The background of the slide is a photograph of a multi-level concrete highway interchange with green-painted concrete beams, set against a clear blue sky and a grassy embankment.

**CENTRAL  
FLORIDA  
EXPRESSWAY  
AUTHORITY**

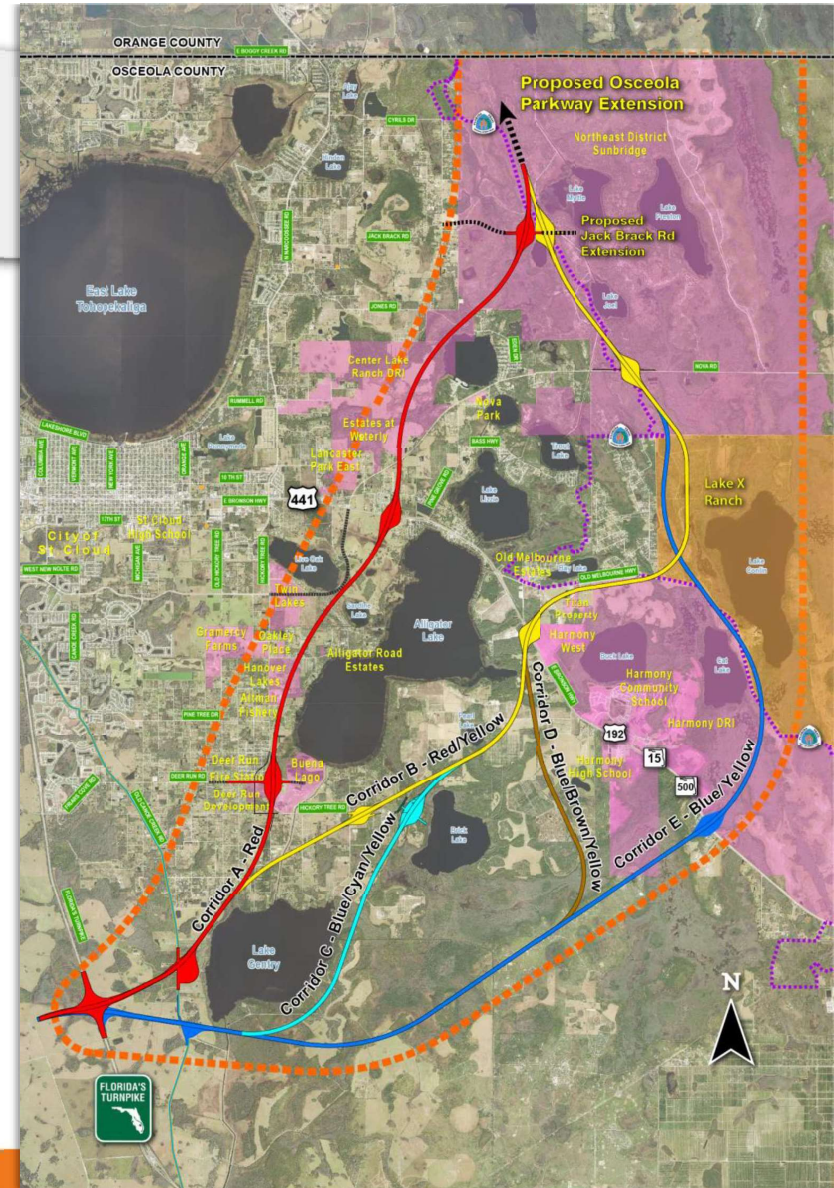
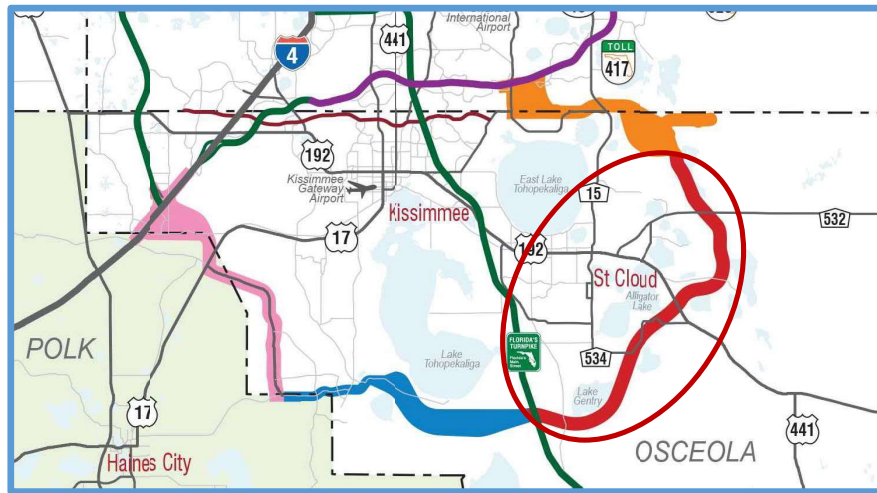
# **Concept, Feasibility, and Mobility Study of the Northeast Connector Expressway**

Glenn Pressimone, Director of Engineering and Alex Hull, Inwood Consulting Engineers, Inc.

**— March 8, 2018 —**

# Northeast Connector Expressway

## Alternative Corridor Alignments Osceola County



# Northeast Connector Expressway Purpose and Need

- Provide roadway connections to Florida's Turnpike and the Osceola Parkway Extension
- Provide regional connectivity and enhance mobility of area's growing population
- Support planned economic development within the study area
- Address existing and future capacity constraints on the existing roadways
- Provide consistency with transportation plans
- Enhance safety and emergency evacuation

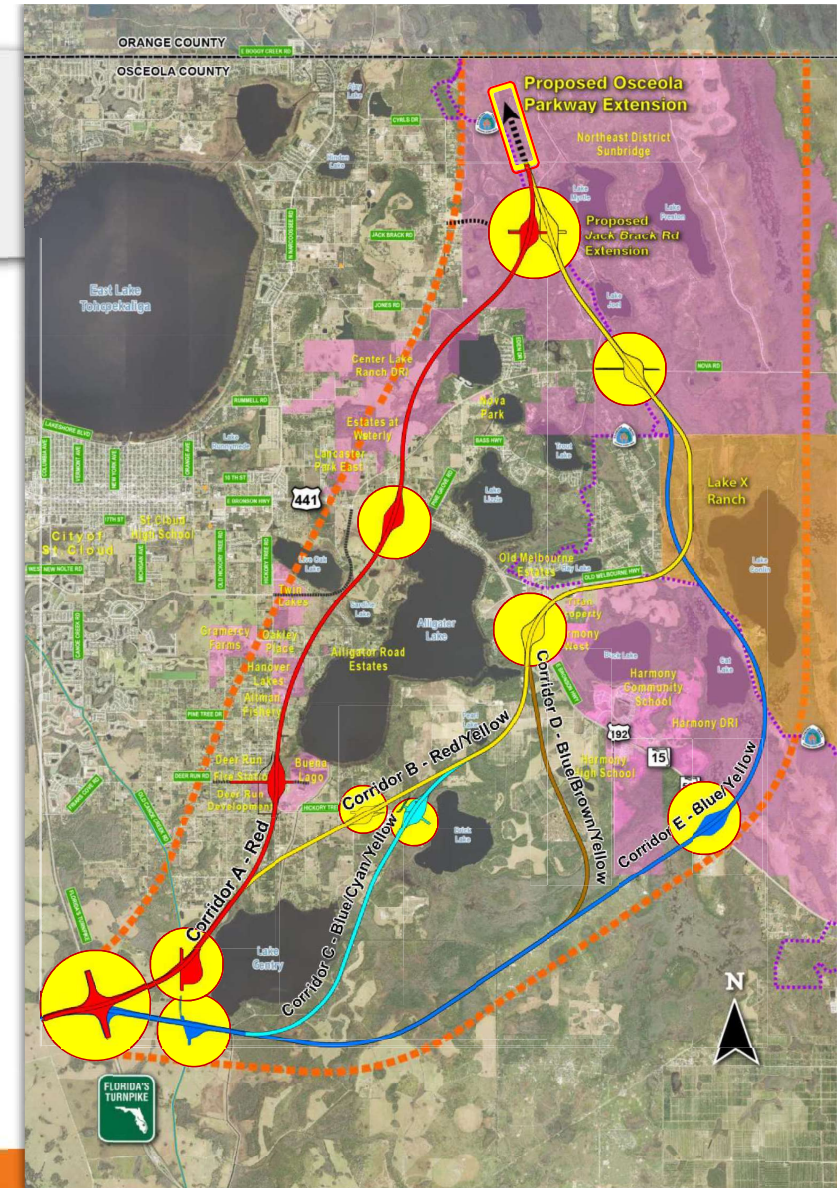
# Previous Studies

- SR 417 Southern Extension Concept Development and Evaluation Study, Wilber Smith Associates, Inc. (WSA), May 2008
- Preliminary Alignment Evaluation for Southport Connector East from Canoe Creek Road to SR 528, Kimley-Horn and Associates, Inc. (KHA), June 2010
- Northeast Connector Expressway Preliminary Alignment Feasibility Study Tier 1 Corridor Analysis Memorandum, VHB, February 2016

# Northeast Connector Expressway

## Five Alternative Corridors

- Corridor A – Red
- Corridor B – Red/Yellow
- Corridor C – Blue/Cyan/Yellow
- Corridor D – Blue/Brown/Yellow
- Corridor E – Blue/Yellow

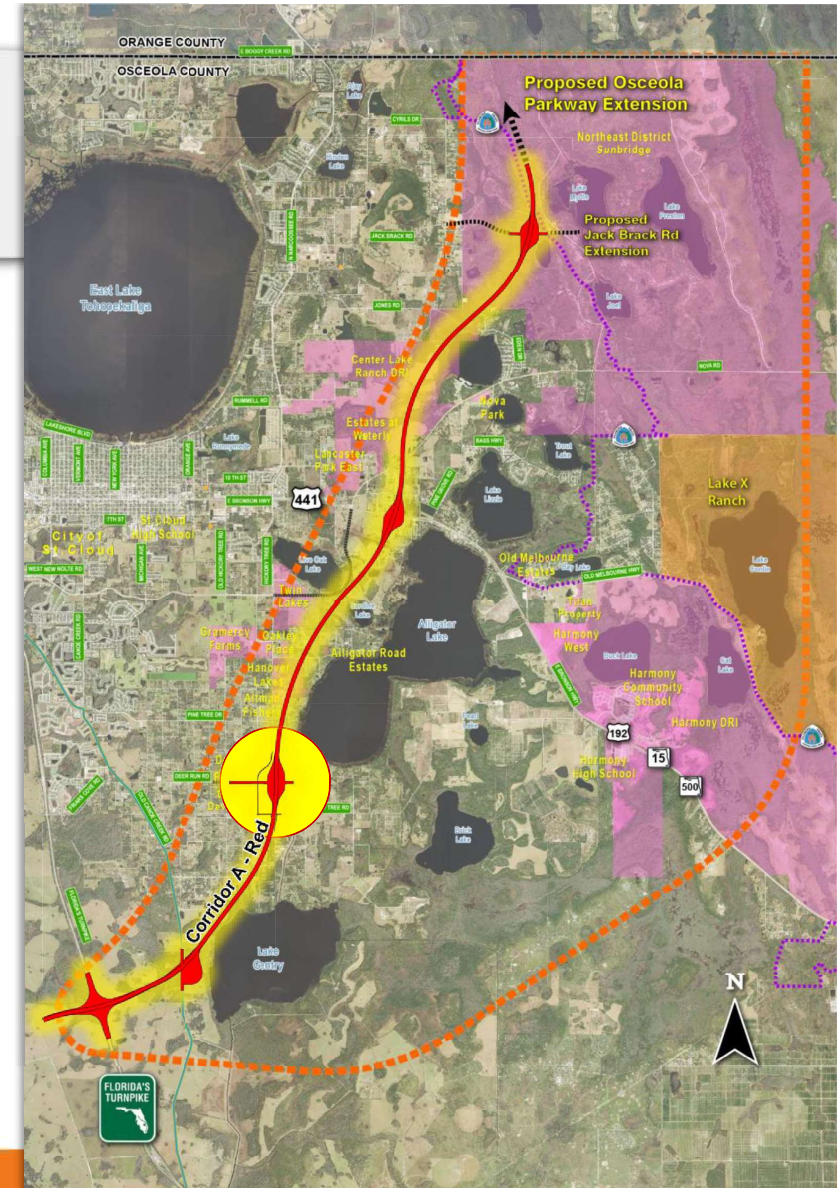


# Northeast Connector Expressway

Corridor A – Red  
Western Corridor

## Impacts Summary

Wetlands:	139	Acres
Conservation Areas:	0	Acres
Right-of-Way:	1,349	Acres
Existing Res.:	181	Parcels
Proposed Res.:	186	Parcels
Est. 2045 Traffic:	25,600	Vehicles
Est. Project Cost:	\$1.20	Billion



# Northeast Connector Expressway

Corridor B – Red/Yellow

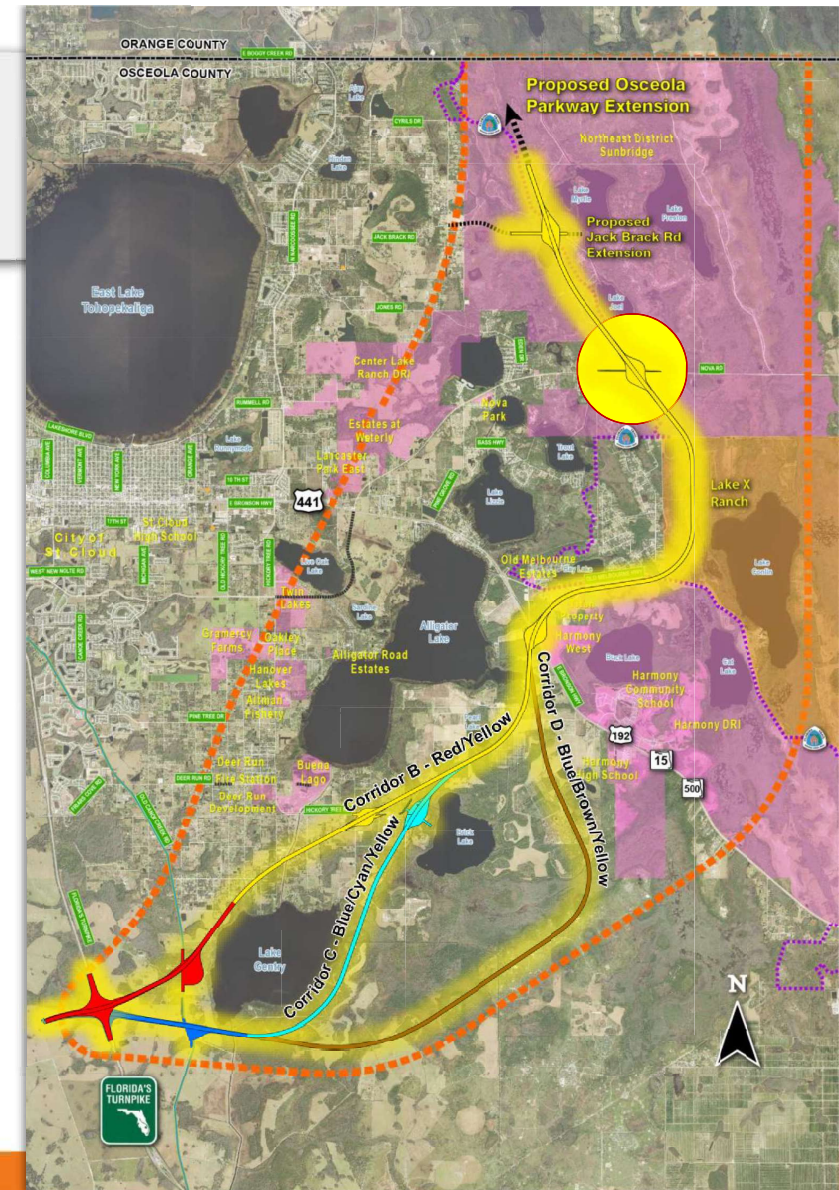
Corridor C – Blue/Cyan/Yellow

Corridor D – Blue/Brown/Yellow

## Central Corridors

### Impacts Summary

Wetlands:	209 to 322	Acres
Conservation Areas:	92	Acres
Right-of-Way:	1,447 to 1,707	Acres
Existing Res.:	9-55	Parcels
Proposed Res.:	19	Parcels
Est. 2045 Traffic:	13,700 to 16,900	Vehicles
Est. Project Cost:	\$1.25 - \$1.33	Billion

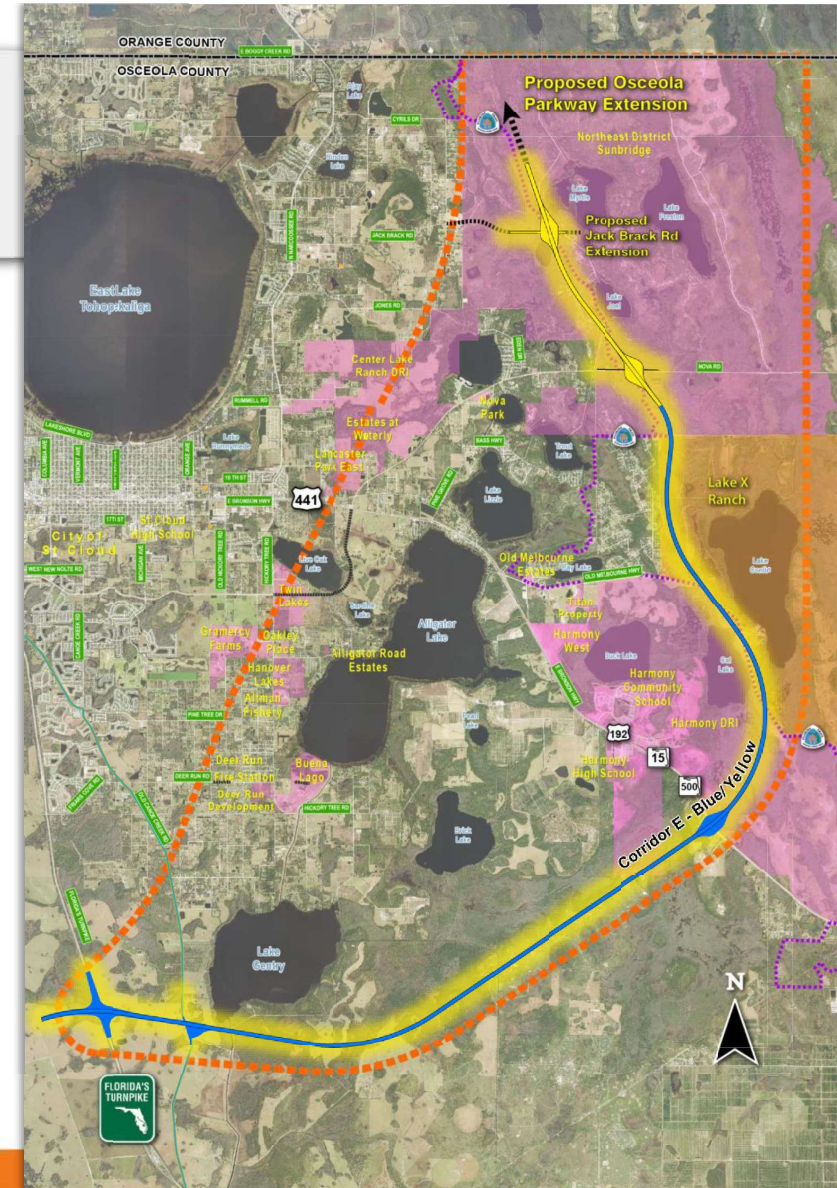


# Northeast Connector Expressway

## Corridor E – Blue/Yellow Eastern Corridor

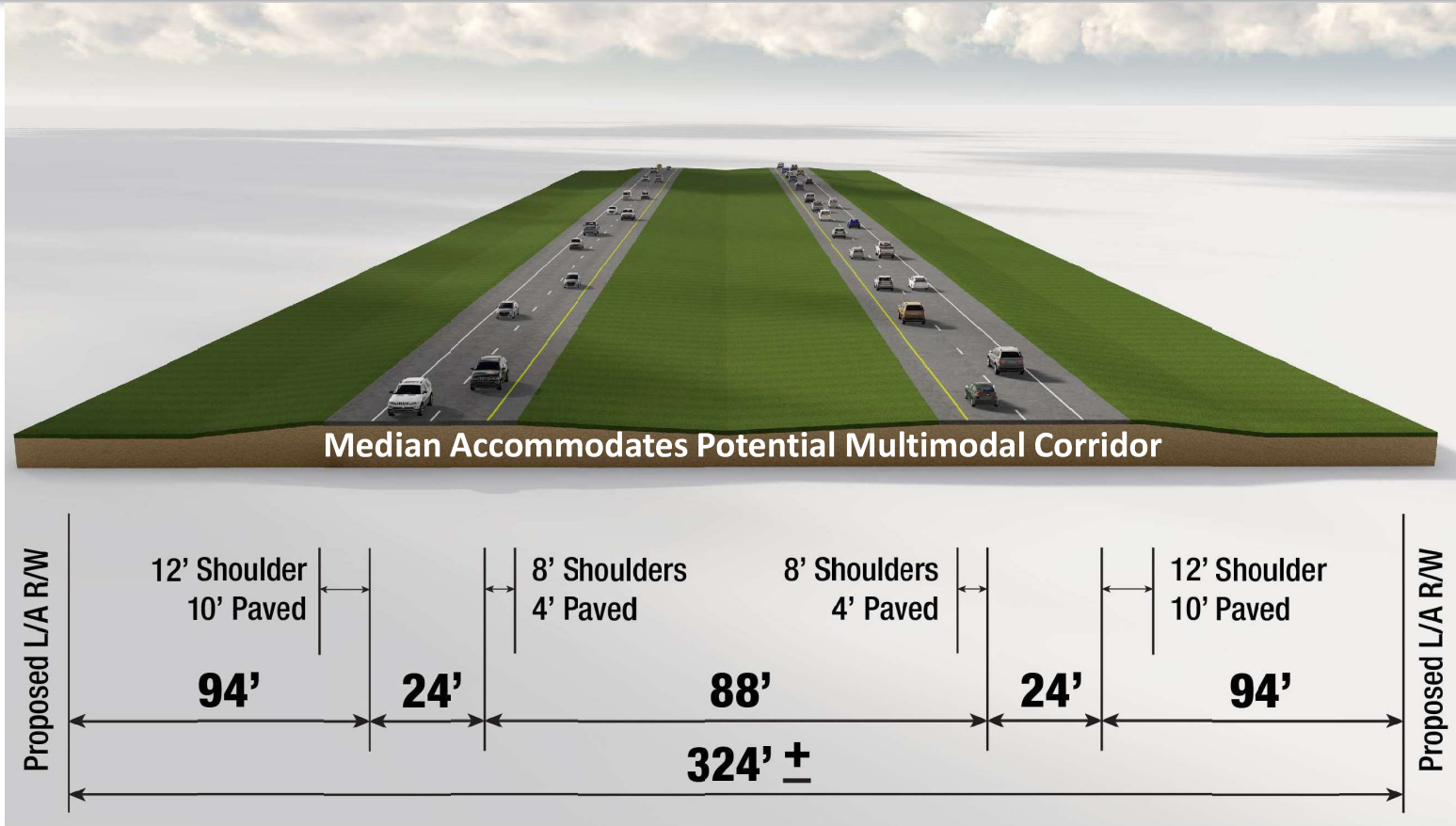
### Impacts Summary

Wetlands:	355	Acres
Conservation Areas:	150	Acres
Right-of-Way:	1,758	Acres
Existing Res.:	3	Parcels
Proposed Res.:	0	Parcels
Est. 2045 Traffic:	13,900	Vehicles
Est. Project Cost:	\$1.41	Billion





# Propose Typical Section



# Northeast Connector Expressway Viability of Alternatives

Expressway Alternative	Total Project Costs (\$ Millions)	30-Year Projected Revenue (\$ Millions)	Viability Range (highest revenue)
Florida's Turnpike to Osceola Parkway Extension	\$1,200 to \$1,410	\$57 to \$212	15% to 18%

# Recommended Motion

Approval of the findings for the Concept, Feasibility and Mobility Study of the Northeast Connector Expressway.