



Concept, Feasibility, and Mobility Study of the Osceola Parkway Extension

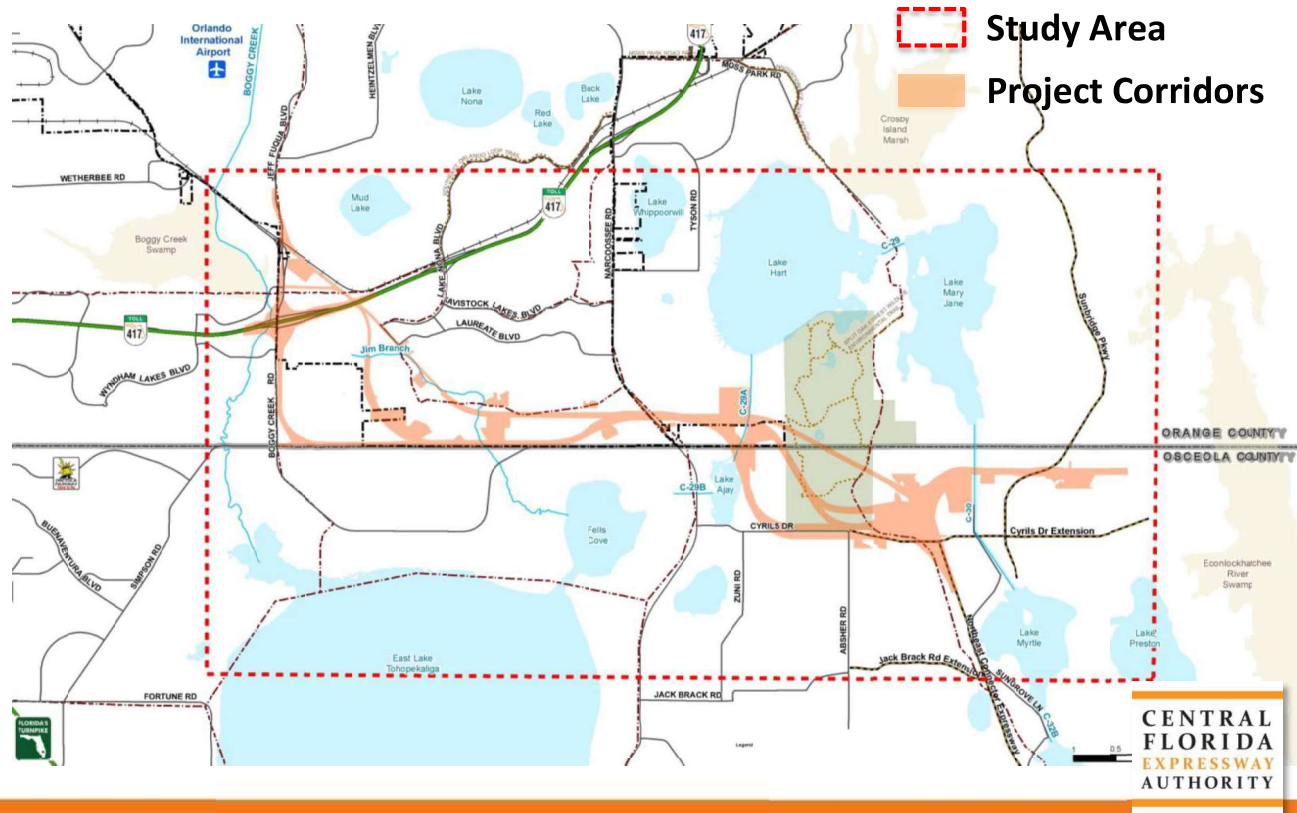
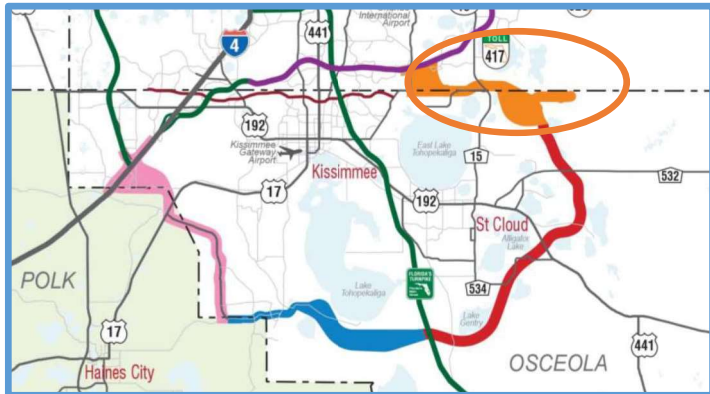
Glenn Pressimone, Director of Engineering and Matt Lamb, CH2M Hill, Inc.

— March 8, 2018 —

Osceola Parkway Extension

Alternative Corridor Alignments

Orange & Osceola Counties

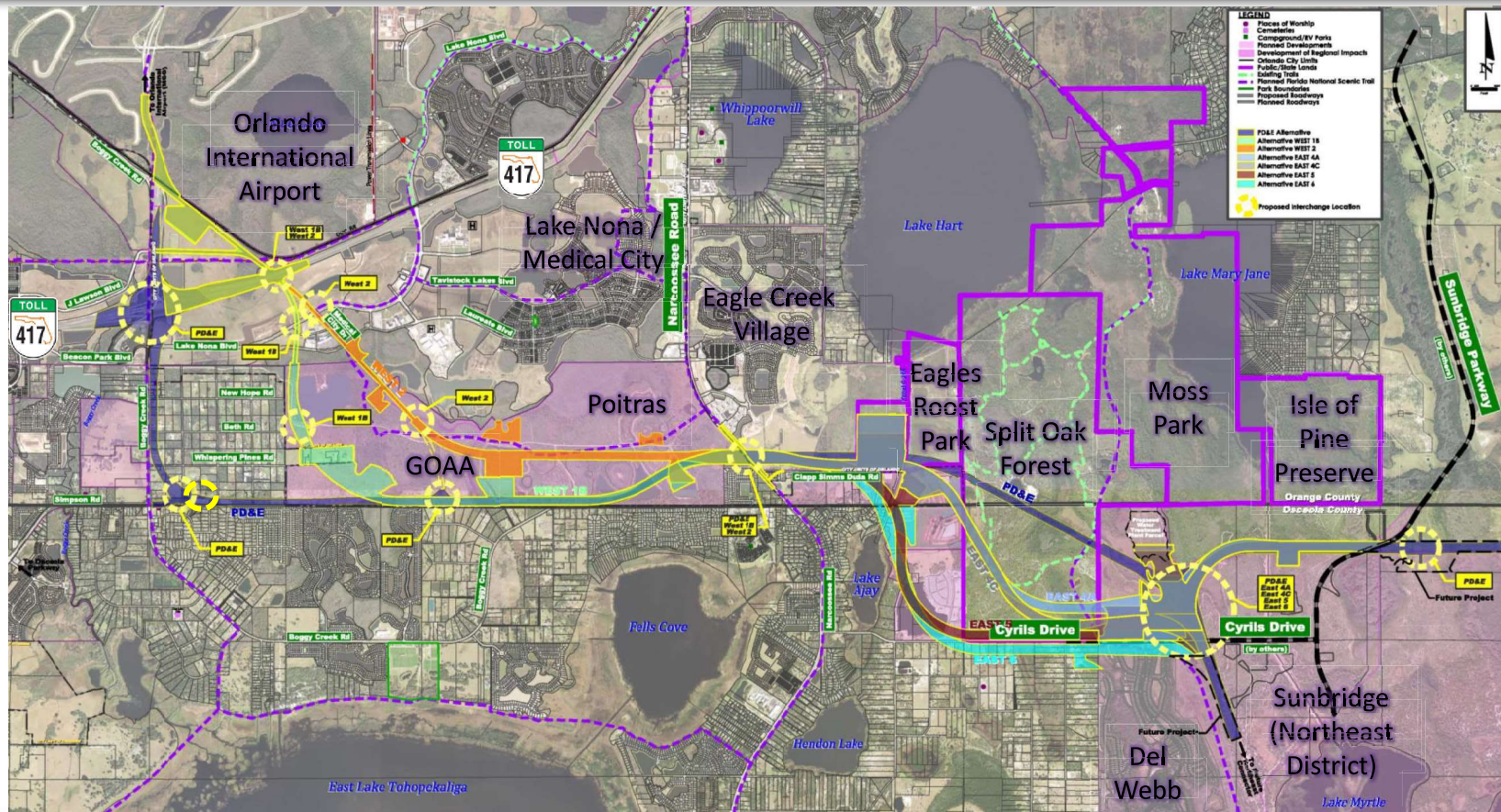


Osceola Parkway Extension

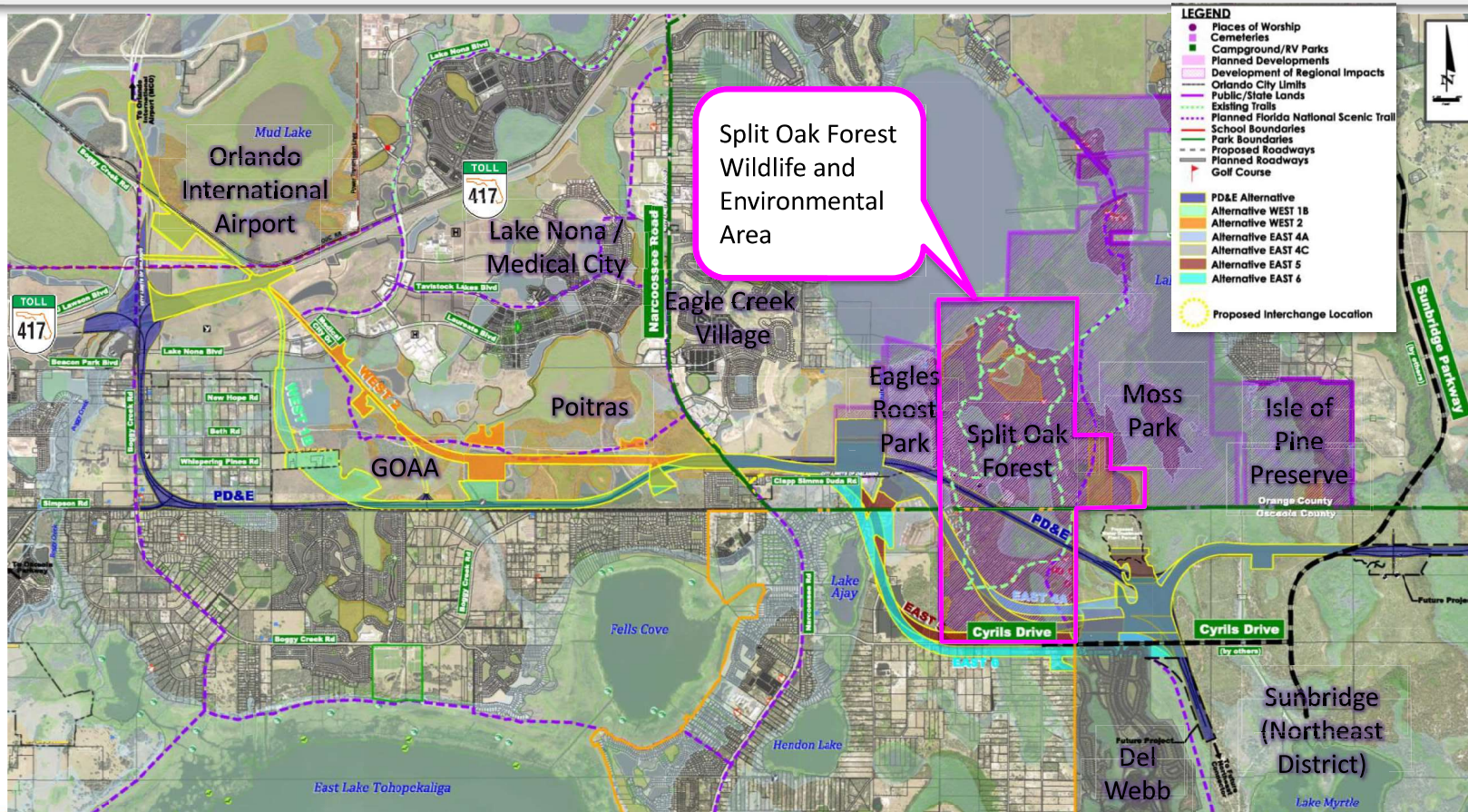
Purpose and Need

1. Respond to ongoing and planned growth in southeast Orange County and northeast Osceola County, specifically the Northeast District, Innovation Way Overlay and Narcoossee Community
2. Provide regional connectivity consistent with recommendations of the East Central Florida Corridor Task Force Final Report
3. Improve roadway connections to SR 417
4. Provide for the incorporation of future transit options

Osceola Parkway Extension Current Alternatives

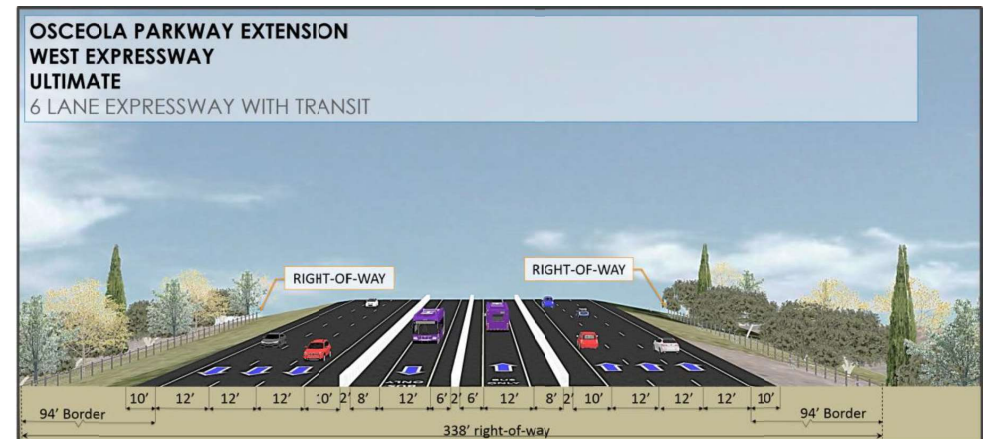
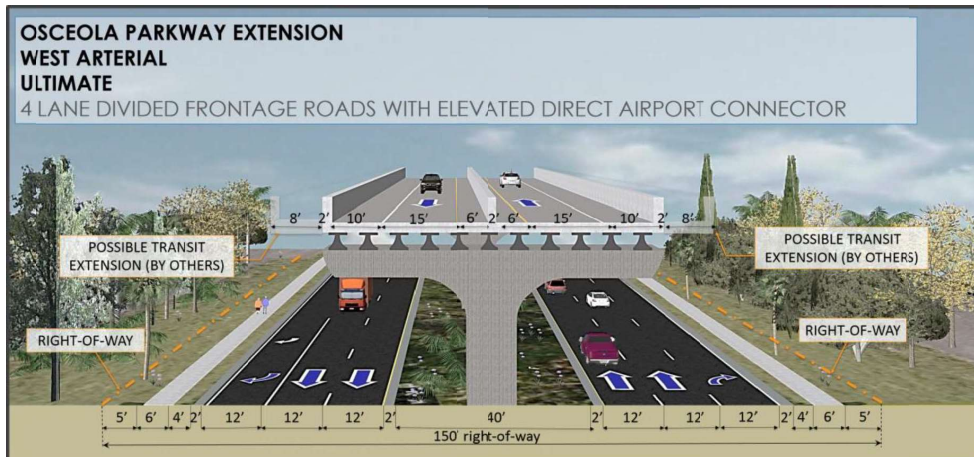


Osceola Parkway Extension Major Environmental Constraints



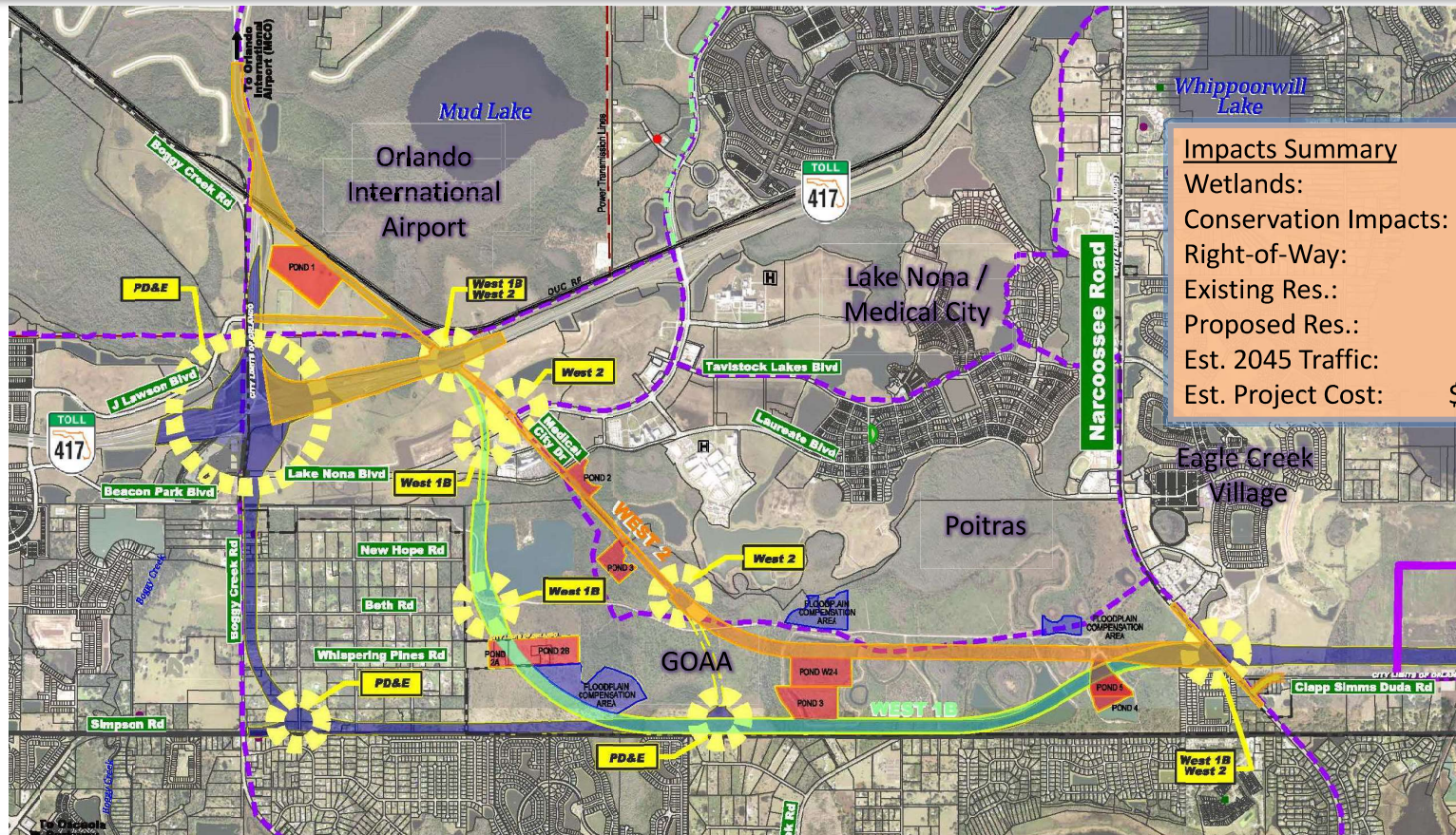
Osceola Parkway Extension West Ultimate Typical Sections

Jeff Fuqua Boulevard to
Laureate Boulevard



Laureate Boulevard to
Narcoossee Road

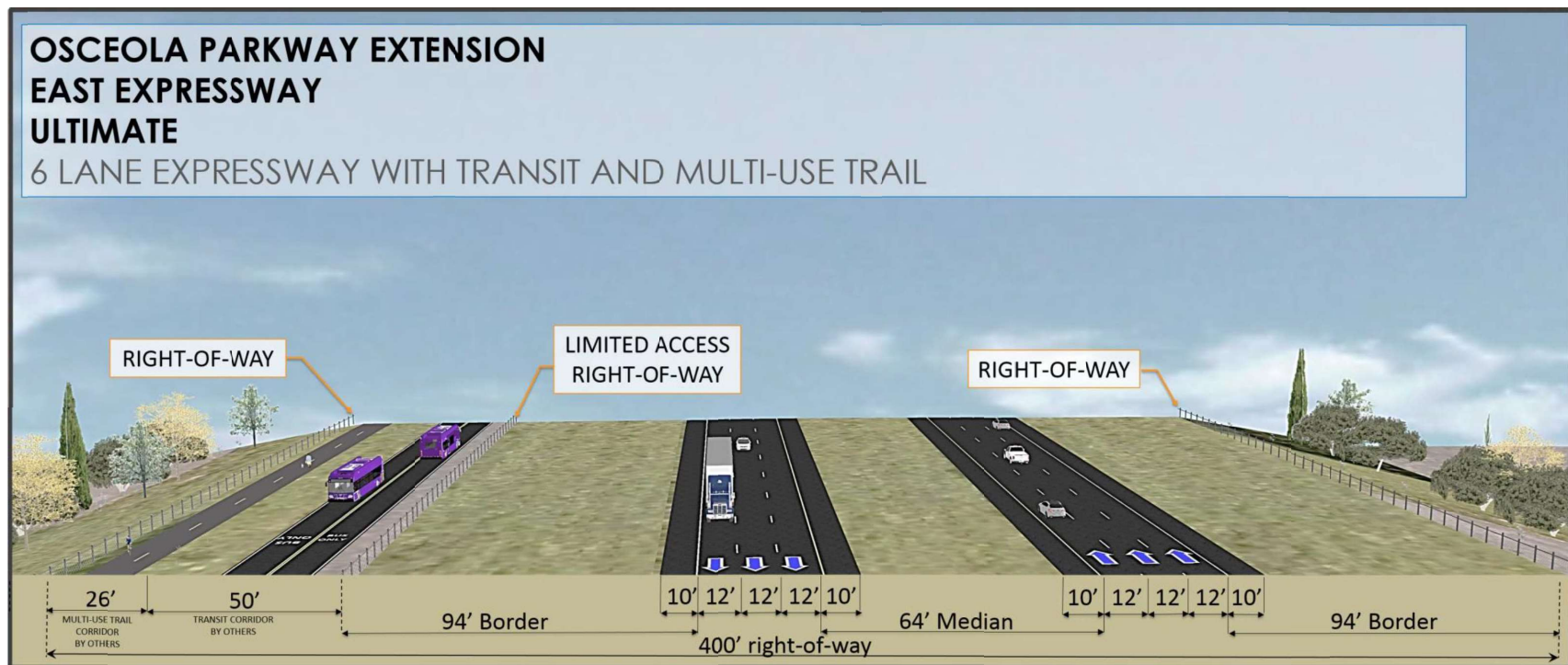
Osceola Parkway Extension Current West Alternatives



Impacts Summary

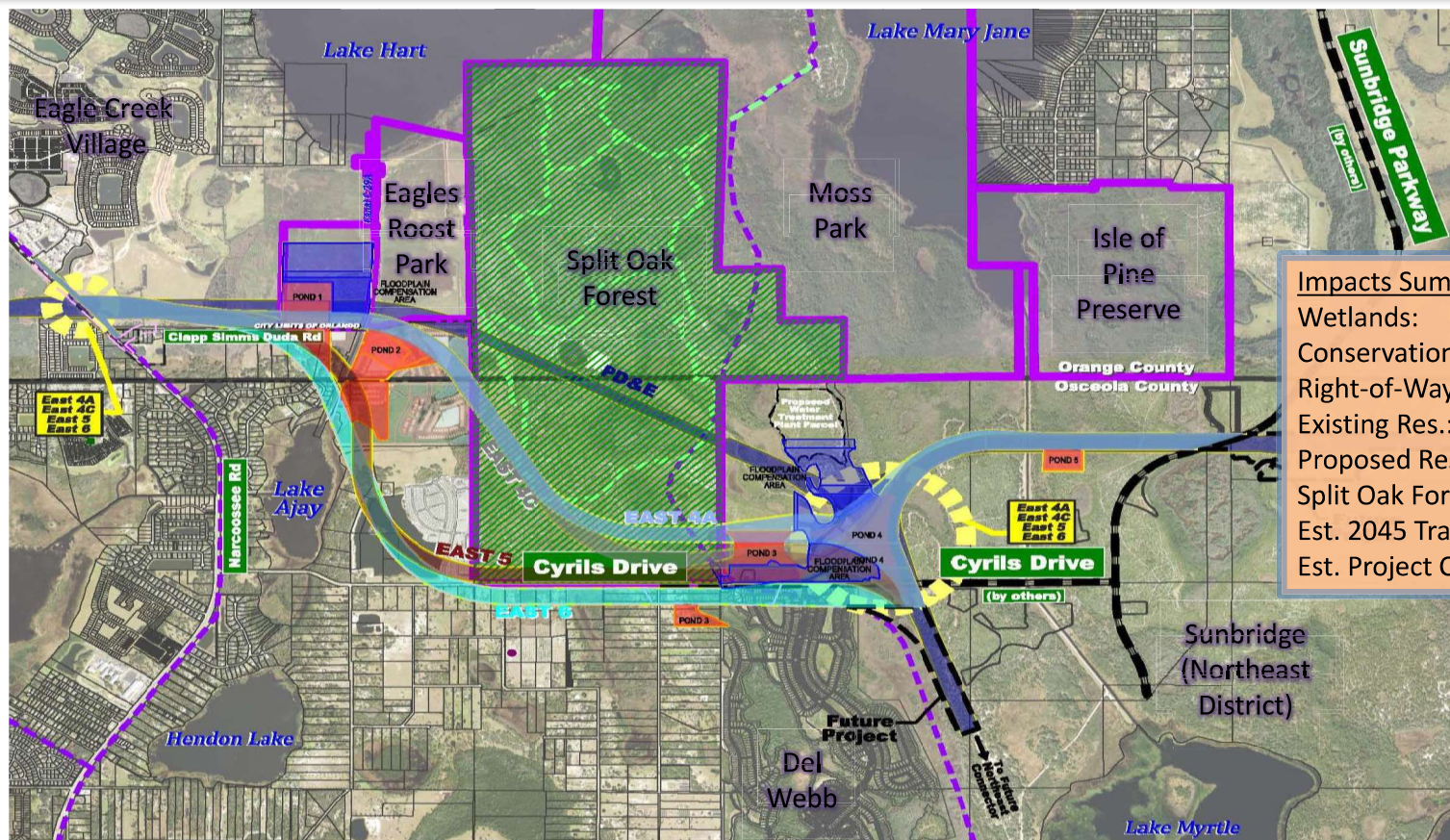
Wetlands:	61 to 93 Acres
Conservation Impacts:	351 to 353 Acres
Right-of-Way:	246 to 392 Acres
Existing Res.:	3 to 5 Parcels
Proposed Res.:	19 Parcels
Est. 2045 Traffic:	22,500 Vehicles
Est. Project Cost:	\$425 to \$478 Million

Osceola Parkway Extension East Expressway Ultimate Typical Section



Osceola Parkway Extension

Current East Alternatives

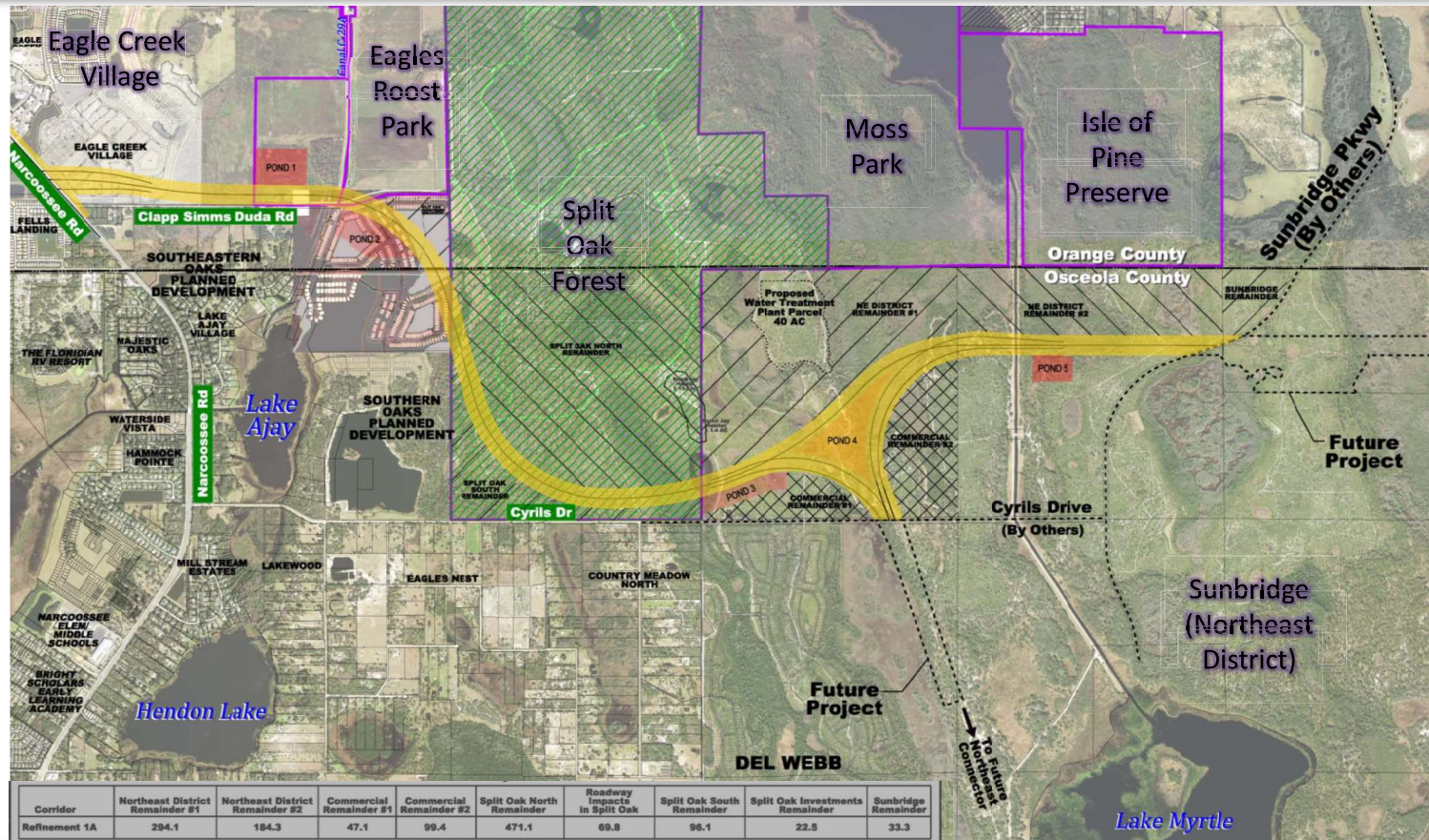


Impacts Summary

Wetlands:	307 to 340 Acres
Conservation Impacts:	253 to 639 Acres
Right-of-Way:	500 to 541 Acres
Existing Res.:	1 to 26 Parcels
Proposed Res.:	344 to 401 Parcels
Split Oak Forest:	0 to 275 Acres
Est. 2045 Traffic:	38,900 Vehicles
Est. Project Cost:	\$990 to \$1,087 Million

Osceola Parkway Extension

Split Oak Working Group Refinement 1A



Osceola Parkway Extension

Viability of Alternatives

Expressway Alternative	Total Project Costs (\$ Millions)	30-Year Projected Revenue (\$ Millions)	Viability Range (highest revenue)
Jeff Fuqua Boulevard to Sunbridge Parkway	\$990 to \$1,087	\$144 to \$297	27% to 30%
Jeff Fuqua Boulevard to Narcoossee Road (Segment)	\$425 to \$478	\$98 to \$146	31% to 34%

Assumptions:

1. Reflects \$70 million escrow contribution from FDOT, AAF and FRI

Osceola Parkway Extension

Viability of Alternatives with Partnerships

Expressway Alternative	Total Project Costs (\$ Millions)	30-Year Projected Revenue (\$ Millions)	Viability Range (highest revenue)
Jeff Fuqua Boulevard to Sunbridge Parkway	\$580 to \$885	\$144 to \$297	34% to 51%
Jeff Fuqua Boulevard to Narcoossee Road (Segment)	\$328 to \$335	\$98 to \$146	44% to 45%

Assumptions:

1. Reflects \$70 million escrow contribution from FDOT, AAF and FRI
2. Reflects full dedication of project right-of-way to CFX from Tavistock and FRI
3. Reflects partial bridge construction through Split Oak Forest (except for PD&E alternative)

Recommended Motion

Approval of the findings for the Concept, Feasibility and Mobility Study of the Osceola Parkway Extension, and authorization for staff to initiate a Project Development & Environment (PD&E) Study.