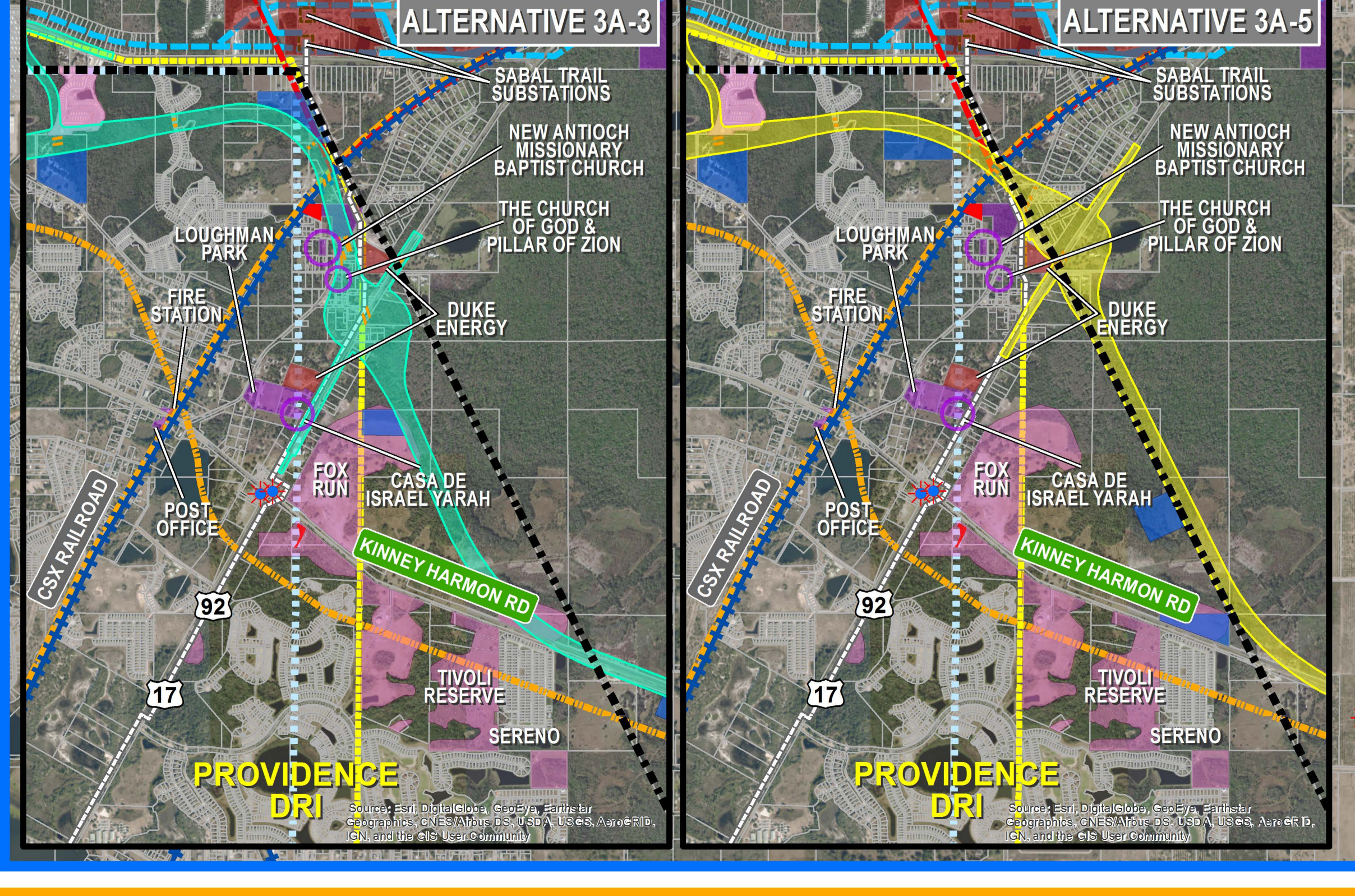
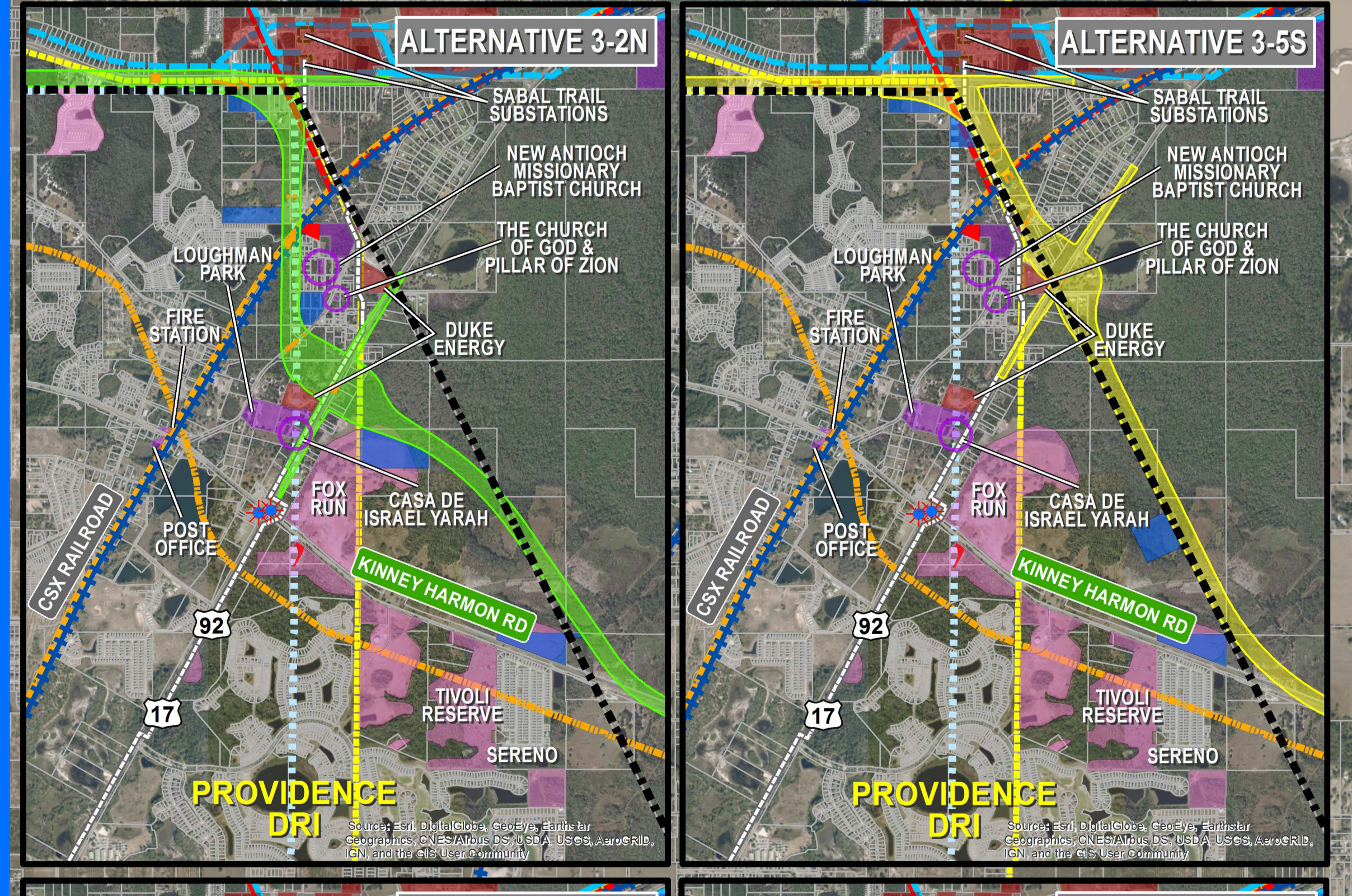
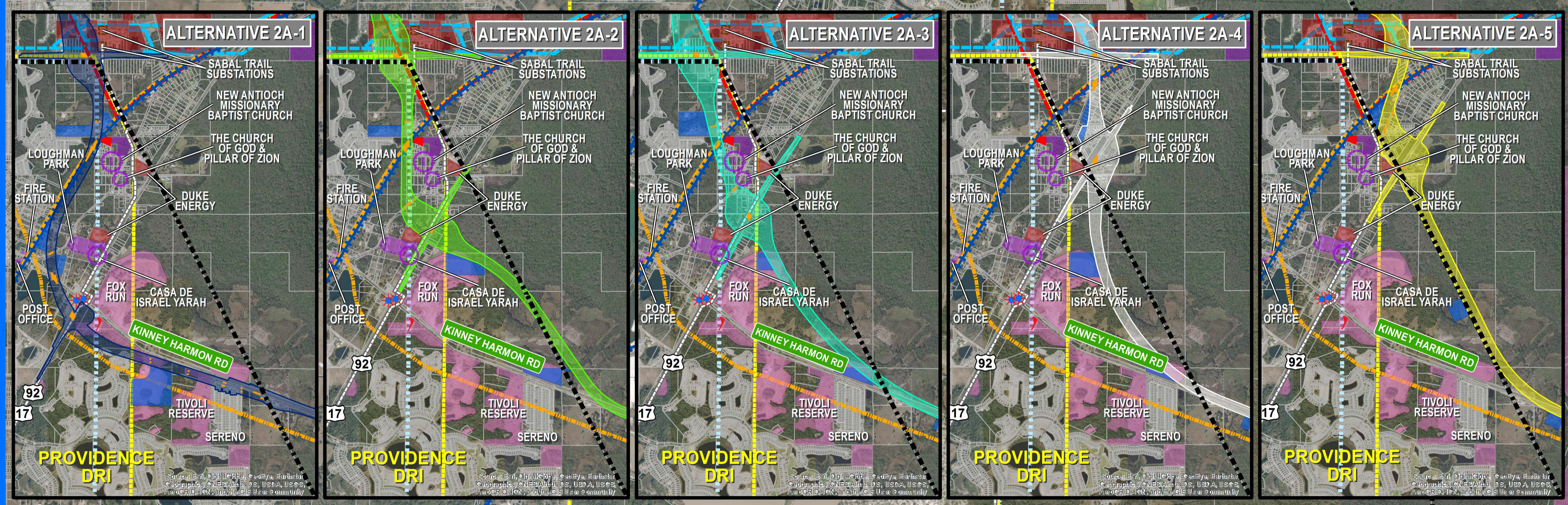
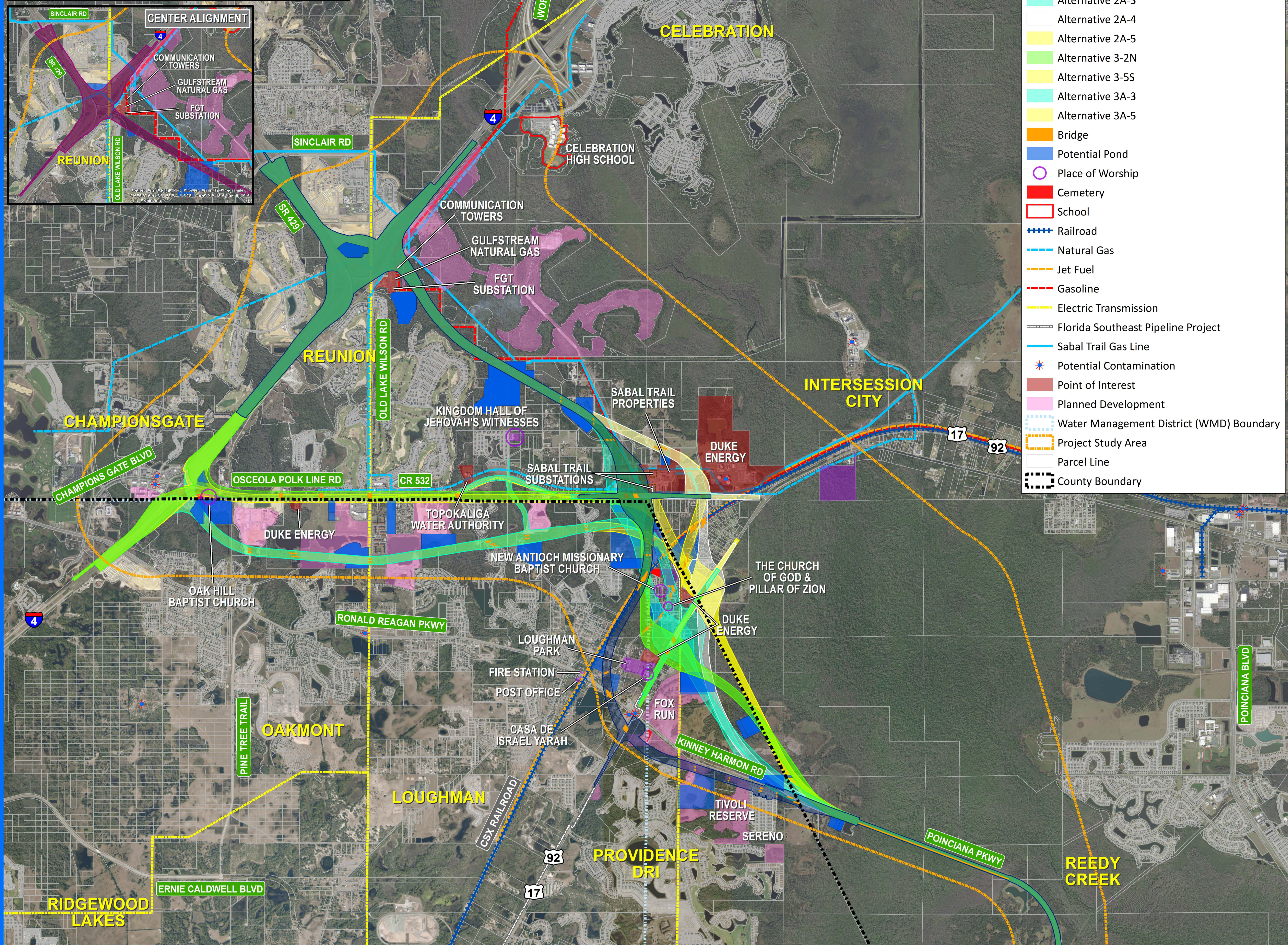


- Legend**
- Alternative 2A-1
 - Alternative 2A-2
 - Alternative 2A-3
 - Alternative 2A-4
 - Alternative 2A-5
 - Alternative 3-2N
 - Alternative 3-5S
 - Alternative 3A-3
 - Alternative 3A-5
 - Bridge
 - Potential Pond
 - Place of Worship
 - Cemetery
 - School
 - Railroad
 - Natural Gas
 - Jet Fuel
 - Gasoline
 - Electric Transmission
 - Florida Southeast Pipeline Project
 - Sabal Trail Gas Line
 - Potential Contamination
 - Point of Interest
 - Planned Development
 - Water Management District (WMD) Boundary
 - Project Study Area
 - Parcel Line
 - County Boundary



POLK COUNTY
 OSCEOLA COUNTY

