

PROJECT DESCRIPTION

The Central Florida Expressway Authority (CFX) is conducting a Project Development and Environment (PD&E) Study for the proposed Poinciana Parkway Extension. The study will look at extending the Poinciana Parkway to County Road (CR) 532 at the Osceola County/Polk County line.



PROJECT GOALS

The goals of this proposed 3-mile, limited-access facility include improving the roadway connections from CR 532 to the greater Poinciana area, enhancing mobility of the area's growing population and economy, relieving congestion on local roads and promoting regional connectivity.

UPDATES SINCE SEPTEMBER 2018 PUBLIC MEETING

More than 130 people attended a public meeting held on September 25, 2018 at Poinciana High School. Three study alternatives - Alternatives 1, 4 and 5 - were presented for public review and comments. Following the public meeting, the study team further refined these alternatives. The results of these refinements are modifications of the original alternatives - now identified as Alternatives 1A, 4A and 5A.

Alternative 1A is similar to Alternative 1; however, the alignment has been shifted to the west side of the CSX railroad tracks in an effort to reduce social impacts. The size of the proposed interchange with CR 532 has also been reduced to avoid impacts to major utilities.

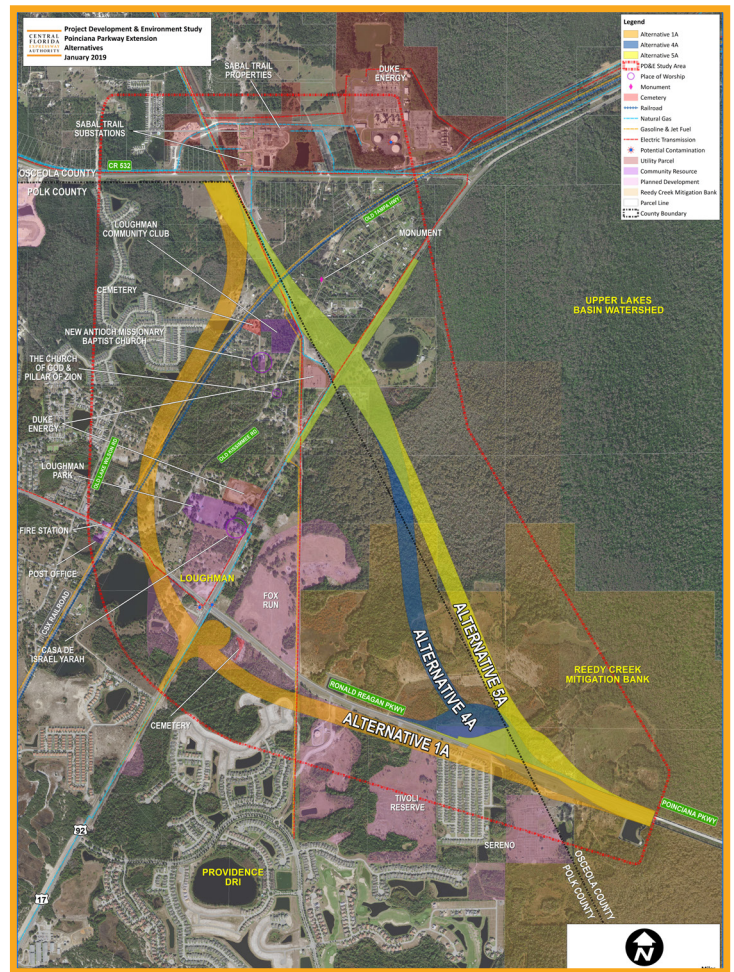
For Alternatives 4A and 5A, it was necessary for the northern portions of Alternatives 4 and 5 to be shifted to the west to allow for the expressway to pass over the CSX railroad and to provide adequate distance between the railroad bridge and the interchange with CR 532. Due to substantial utility constraints along CR 532, Alternatives 4A and 5A each have an interchange with CR 532 at the same location as Alternative 1A. However, these alternatives will still likely require the relocation of major utilities. The option to provide access ramps to and from Ronald Reagan Parkway has also been added to the evaluation of Alternatives 4A and 5A.





PUBLIC INVOLVEMENT

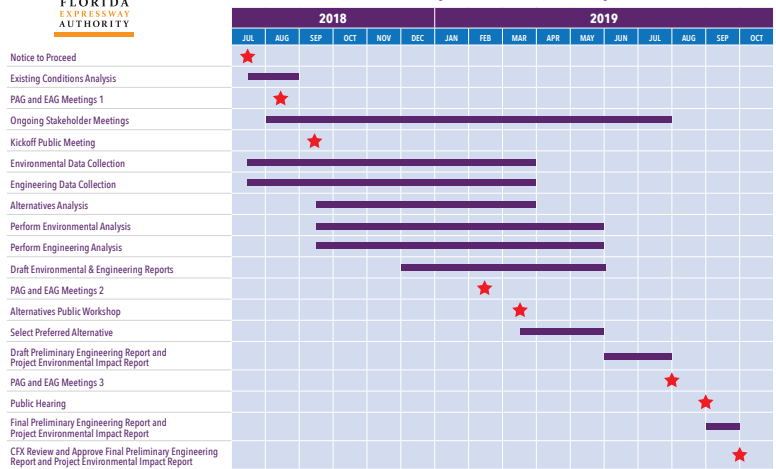
Public involvement and community engagement are a crucial component of this study. We value your input. CFX is providing multiple opportunities for participation, including a public meeting and public hearing. Community groups can request a presentation via the CFXWay.com website or by emailing Public Involvement Coordinator Mary Brooks at ProjectStudies@CFXWay.com. You're also welcome to submit your comments via the website or project email address. And follow the study on Facebook for updates.



The PD&E study began in July 2018 and is expected to last 15 months. A graphic of key study milestones is shown here.



Poinciana Parkway Extension PD&E Study Schedule



TO FIND OUT MORE ABOUT THE STUDY, CONTACT:

CENTRAL FLORIDA EXPRESSWAY AUTHORITY

Mary Brooks, Public Involvement Coordinator
 Phone: (407) 802-3210
 Email: ProjectStudies@CFXway.com

4974 ORL Tower Road
 Orlando, FL 32807
 Phone: (407) 690-5000
 Fax: (407) 690-5011
 Email: Info@CFXway.com

You may also visit the study's webpage at:

<https://bit.ly/2KECX9a>

@PoincianaPkwyExt

Public participation is solicited without regard to race, color, national origin, age, sex, religion, disability or family status. Para más información en español acerca del proyecto, por favor comuníquese con Alicia Arroyo al 407-509-0231 o por correo electrónico Alicia.Arroyo@QCAusa.com.